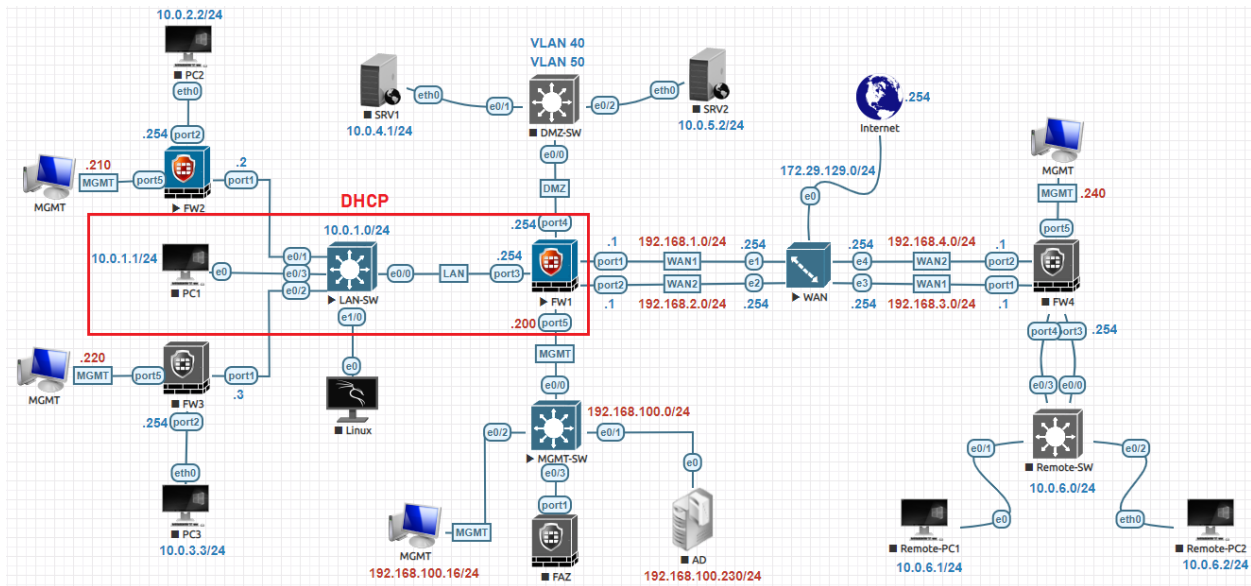


DHCP Server Lab:



To add a DHCP server, go to **Network > Interfaces**. Edit the interface **Port3** Which is LAN interface connected to LAN and select DHCP in the addressing mode. Click **OK**.

- Network**
- Interfaces
- DNS
- Packet Capture
- SD-WAN
- Static Routes
- Policy Routes
- RIP
- OSPF
- BGP
- Routing Objects
- Multicast
- Policy & Objects
- Security Profiles
- VPN
- User & Authentication
- System
- Security Fabric
- Log & Report

DHCP Server

DHCP status Enabled Disabled

Address range

Netmask

Default gateway Same as Interface IP Specify

DNS server Same as System DNS Same as Interface IP Specify

Lease time second(s)

Advanced

Mode Server Relay

Type Regular IPsec

NTP server Local Same as System NTP Specify

Wireless controllers Same as Interface IP Specify

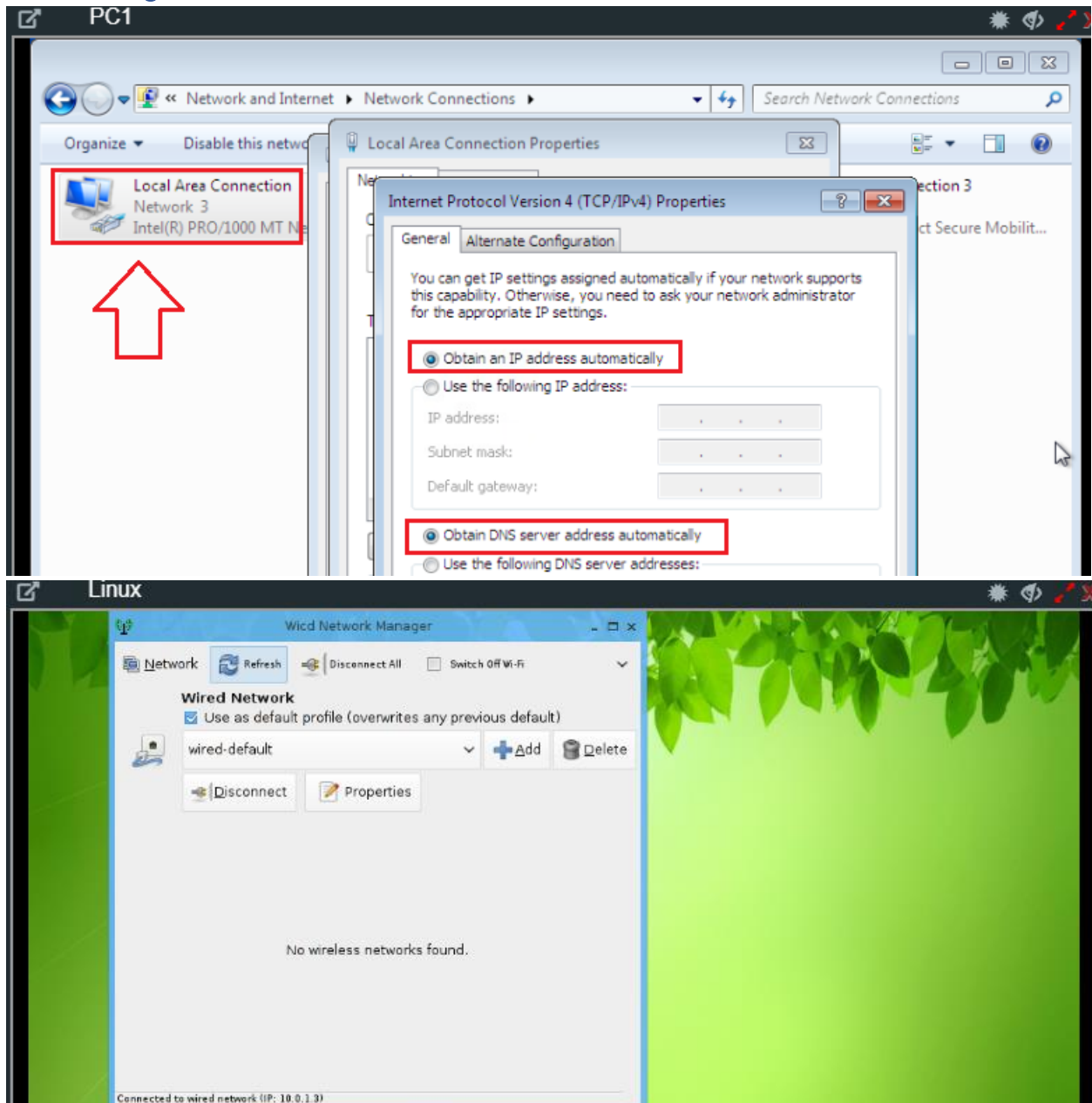
Time zone Same as System Specify

Next bootstrap server

TFTP server(s)

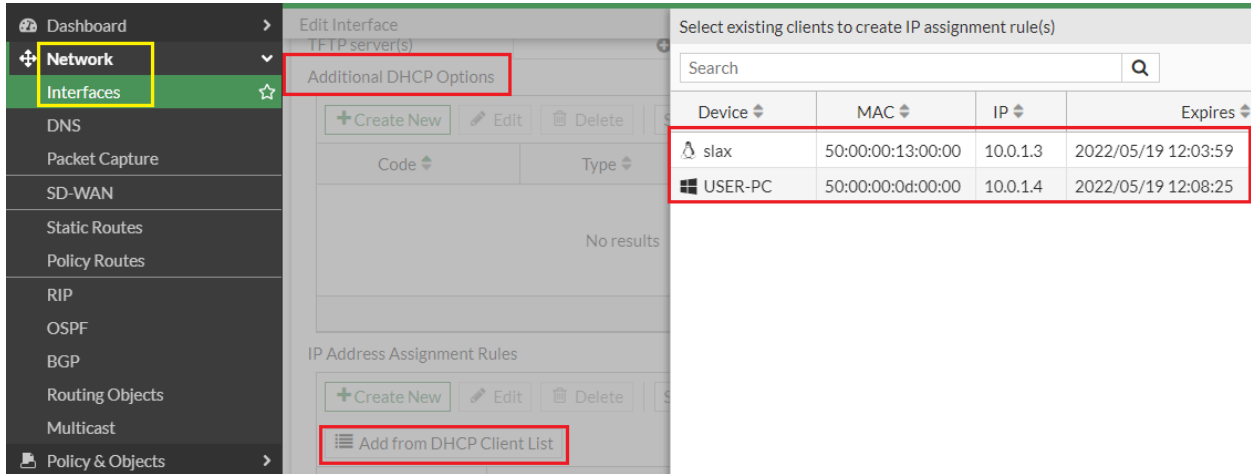
Name	Type	IP/Netmask	DHCP Clients	DHCP Ranges
802.3ad Aggregate 1				
fortilink	802.3ad Aggregate	Dedicated to FortiSwitch		10.255.1.2-10.255.1.254
Physical Interface 8				
DMZ (port4)	Physical Interface	0.0.0.0/0.0.0.0		
LAN (port3)	Physical Interface	10.0.1.254/255.255.255.0		10.0.1.2-10.0.1.253
MGMT (port5)	Physical Interface	192.168.114.200/255.255.255.0		

Client Configuration:

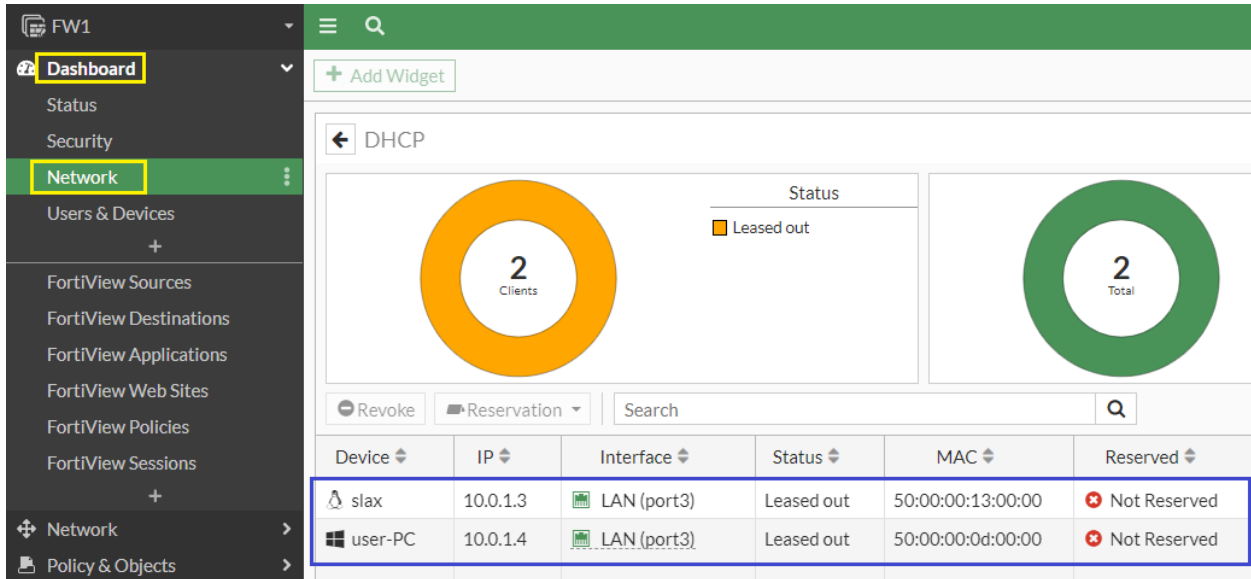


Verification:

Go to **Network > Interfaces** edit the interface click on **Advanced** go to **IP Address Assignment Rules** Click **Add from DHCP Client List**



Go to **Dashboard > Network** to verify DHCP assigned IP address and details.



Name	Type	IP/Netmask	DHCP Clients
802.3ad Aggregate 1			
fortilink	802.3ad Aggregate	Dedicated to FortiSwitch	
Physical Interface 8			
DMZ (port4)	Physical Interface	0.0.0.0/0.0.0.0	
LAN (port3)	Physical Interface	10.0.1.254/255.255.255.0	2

```

PC1
Administrator: Command Prompt
C:\Users\user>ipconfig

Windows IP Configuration

Ethernet adapter Local Area Connection:

    Connection-specific DNS Suffix  . : 
    IPv4 Address. . . . . : 10.0.1.4
    Subnet Mask . . . . . : 255.255.255.0
    Default Gateway . . . . . : 10.0.1.254
  
```

```

Linux
xterm
root@slax:~# ifconfig
ens3: flags=4163<UP,BROADCAST,RUNNING,MULTICAST> mtu 1500
    inet 10.0.1.3 netmask 255.255.255.0 broadcast 10.0.1.255
    inet6 fe80::5200:ff:fe13:0 prefixlen 64 scopeid 0x20<link>
    ether 50:00:00:13:00:00 txqueuelen 1000 (Ethernet)
    RX packets 436 bytes 40905 (39.9 KiB)
    RX errors 0 dropped 0 overruns 0 frame 0
    TX packets 750 bytes 59771 (58.3 KiB)
    TX errors 0 dropped 0 overruns 0 carrier 0 collisions 0

lo: flags=73<UP,LOOPBACK,RUNNING> mtu 65536
    inet 127.0.0.1 netmask 255.0.0.0
    inet6 ::1 prefixlen 128 scopeid 0x10<host>
    loop txqueuelen 1 (Local Loopback)
    RX packets 0 bytes 0 (0.0 B)
    RX errors 0 dropped 0 overruns 0 frame 0
    TX packets 0 bytes 0 (0.0 B)
    TX errors 0 dropped 0 overruns 0 carrier 0 collisions 0
  
```

```

FW1
FW1 # execute dhcp lease-list port3
port3
  IP            MAC-Address           Hostname           VCI            SSID
  10.0.1.3      50:00:00:13:00:00    SERVER-ID         Expiry
  10.0.1.3      50:00:00:13:00:00    2                 Thu May 19 12:03:59 2022
  10.0.1.4      50:00:00:0d:00:00    user-PC           MSFT 5.0
  10.0.1.4      50:00:00:0d:00:00    2                 Thu May 19 12:08:25 2022

FW1 #
  
```