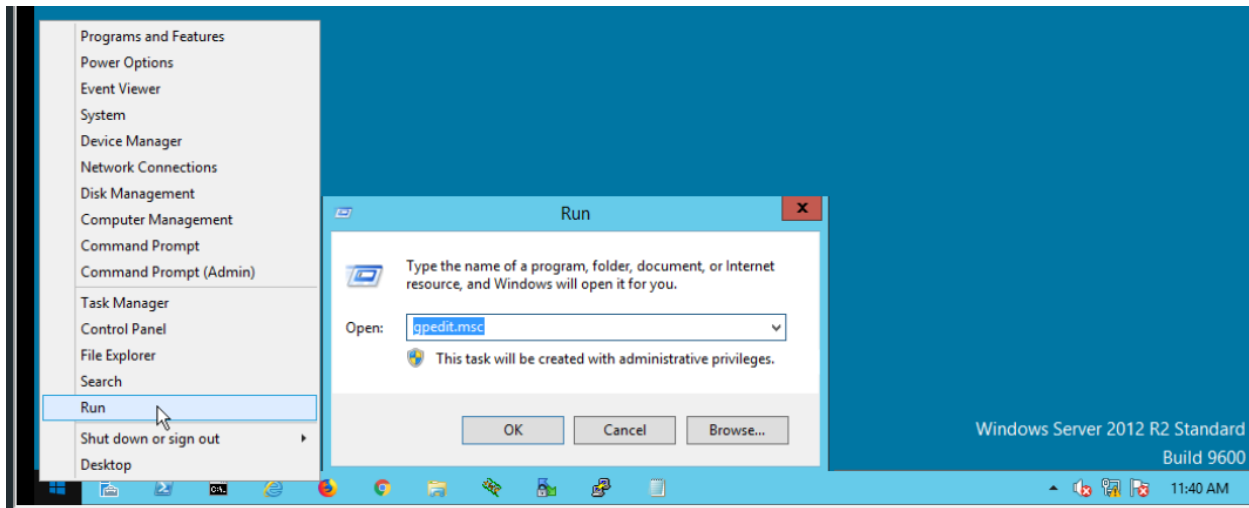
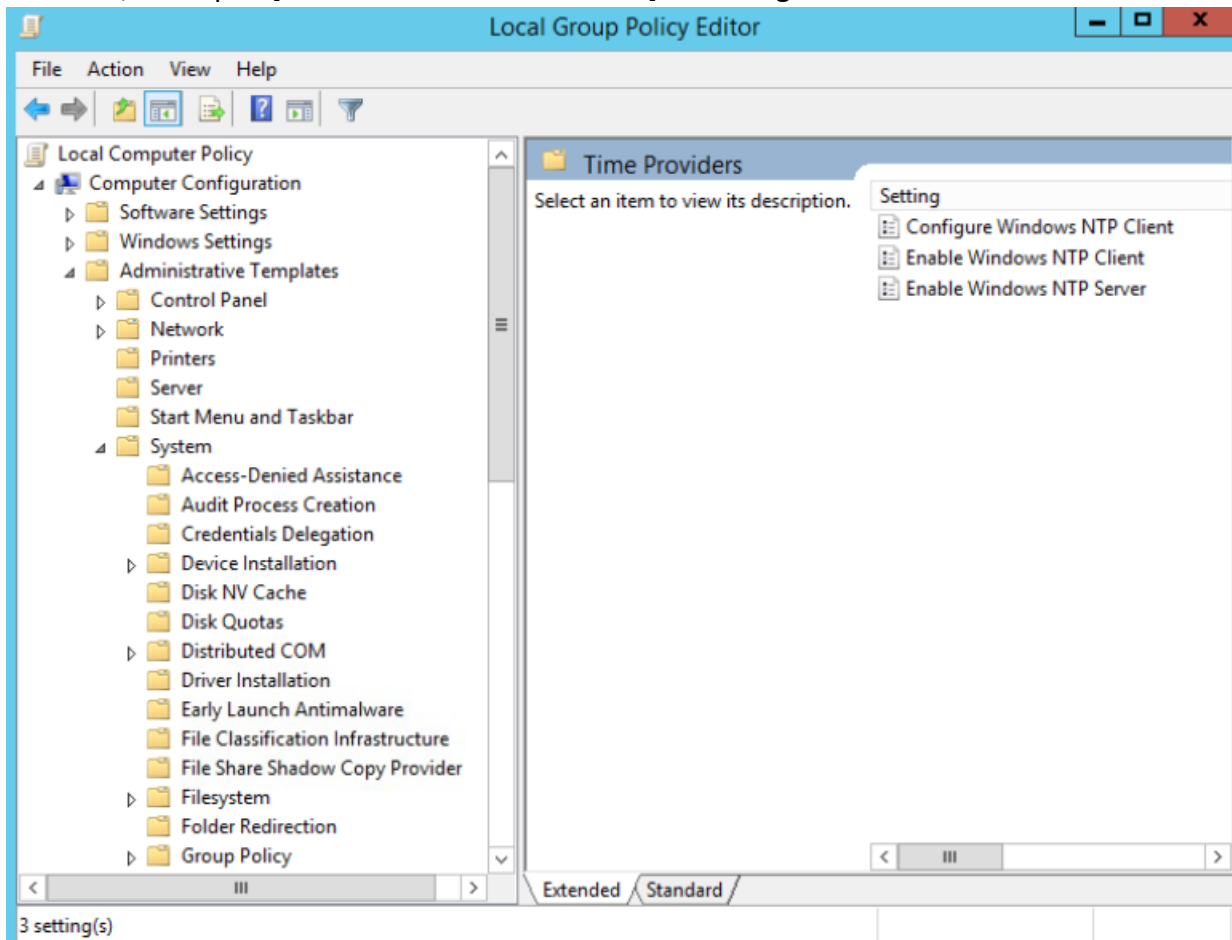


## Windows 2012 NTP Server:

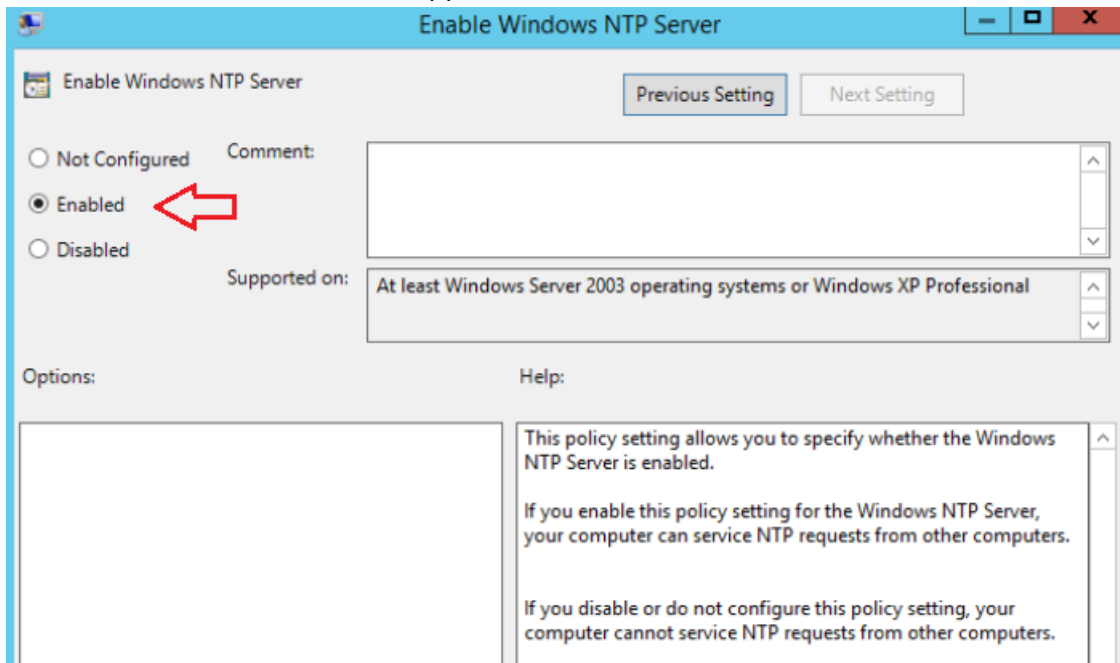
Right-click Windows icon and open [run] and input "gpedit.msc" like follows.



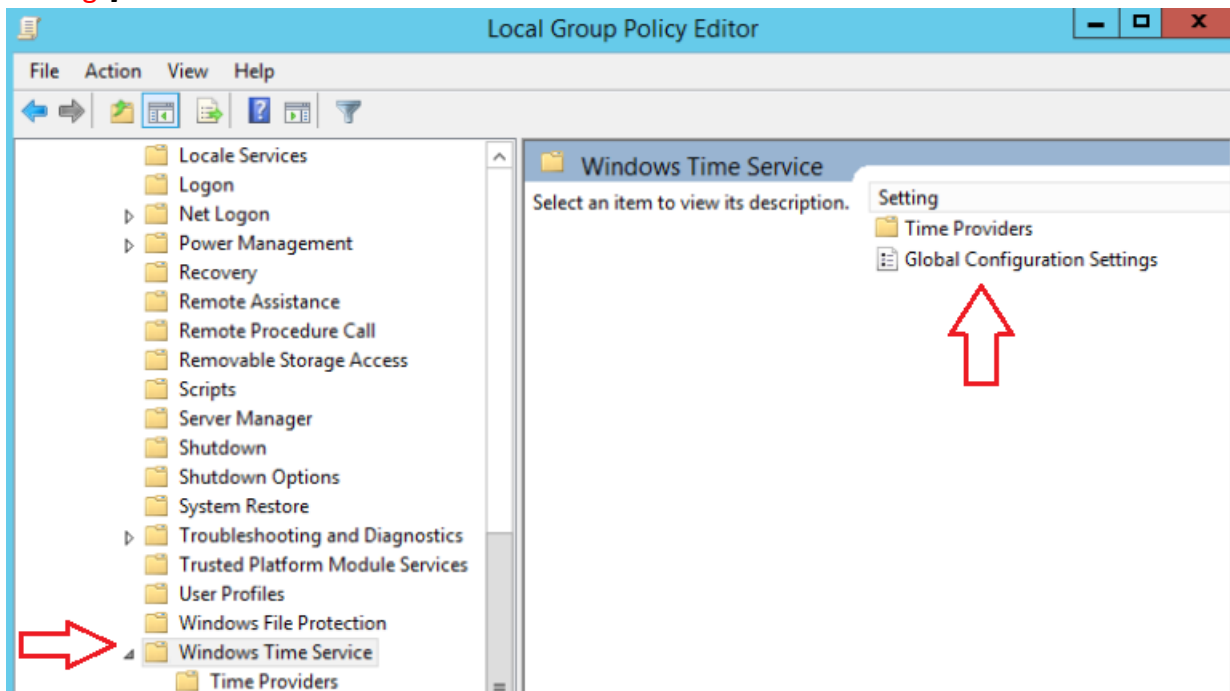
Select [Administrative template] - [System] - [Windows Time Service] [Time Providers] on the left Pane, and Open [Enable Windows NTP Server] on the right Pane.



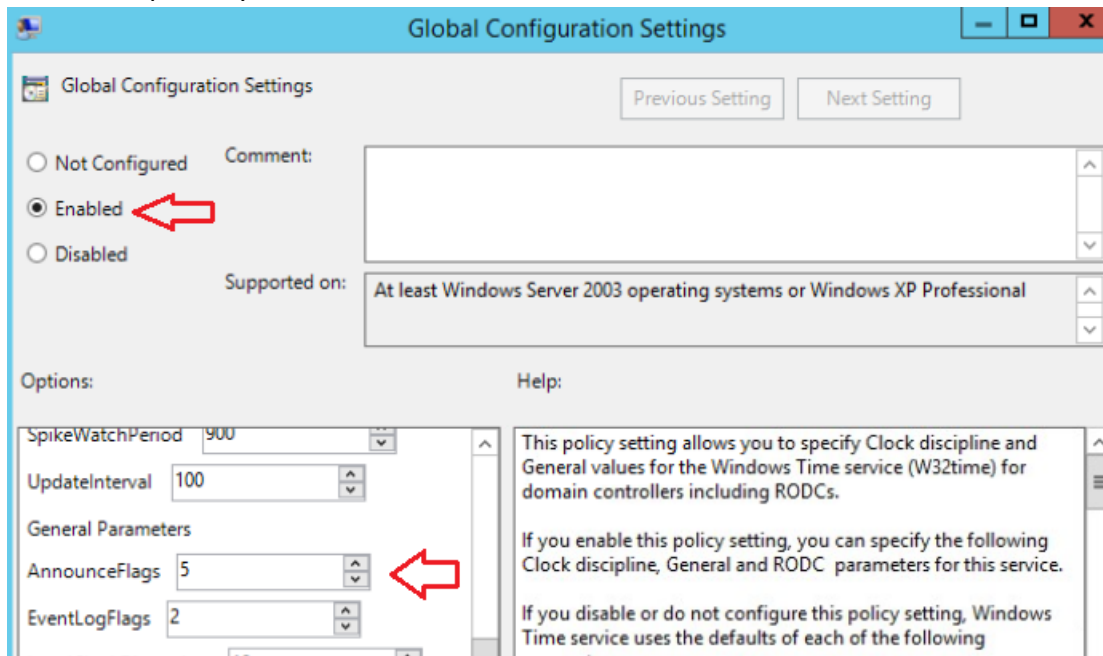
Check a box [Enabled] which is upper-left like follows.



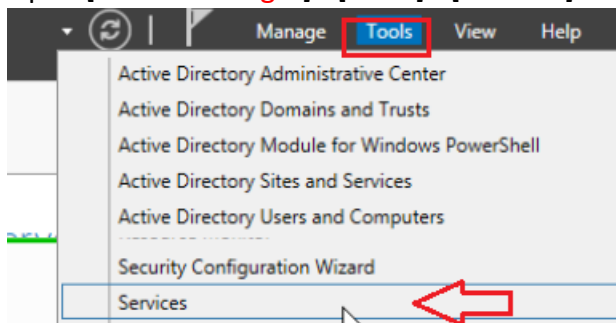
Back to [Windows Time Service] on the left Pane, and click to Open [Global Configuration Settings].



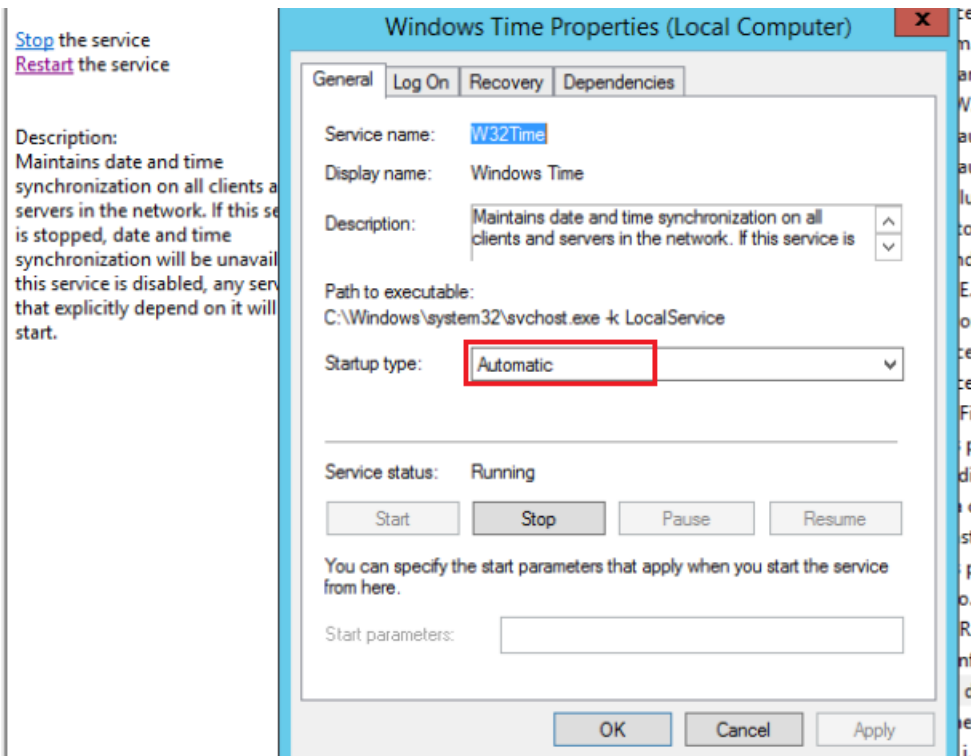
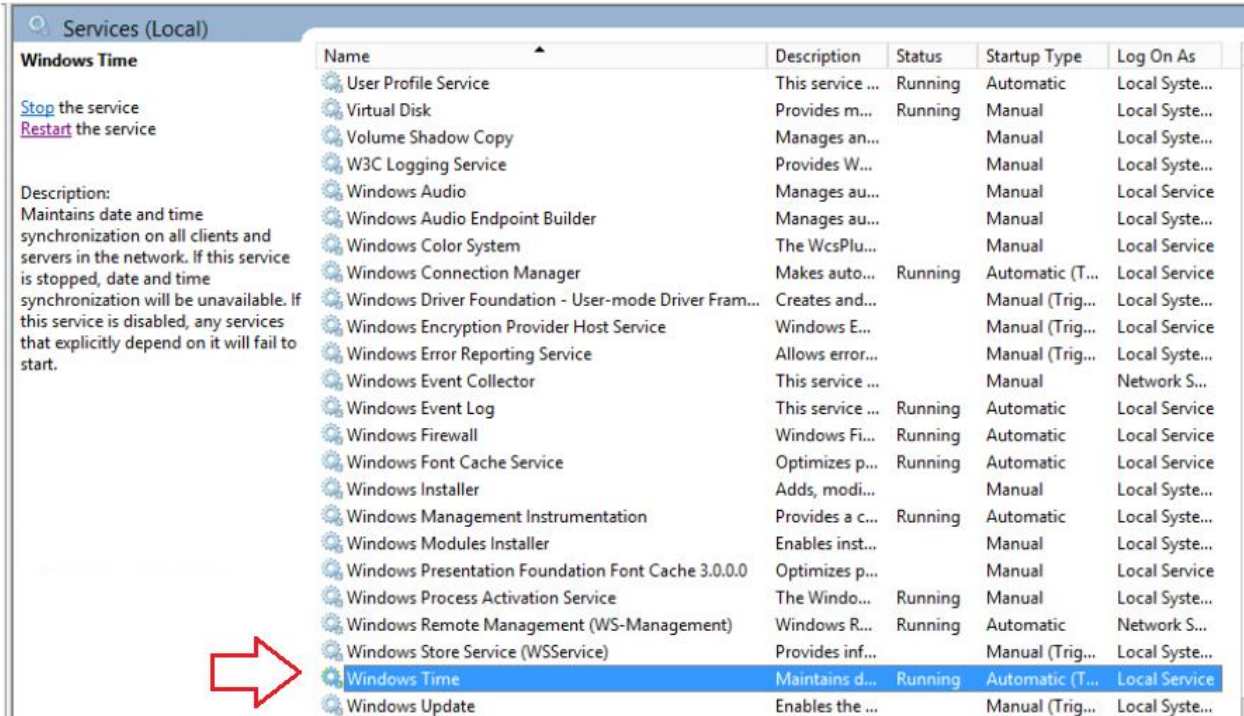
Check a box [Enabled] which is upper-left and change [AnnounceFlag] to [5] like follows. Then Close Group-Policy-Editor.



Open [Server Manager] - [Tools] - [Services].



Select [Windows Time] Service and click [Start the service] or [Restart the service]. Furthermore, Change [Startup type] to [Automatic] if it is not the value.



If Windows Firewall is enabled, allow 123/UDP.

Download **NTPTool** ([ntp-server-tool.exe](#)) to verify the status as well.

