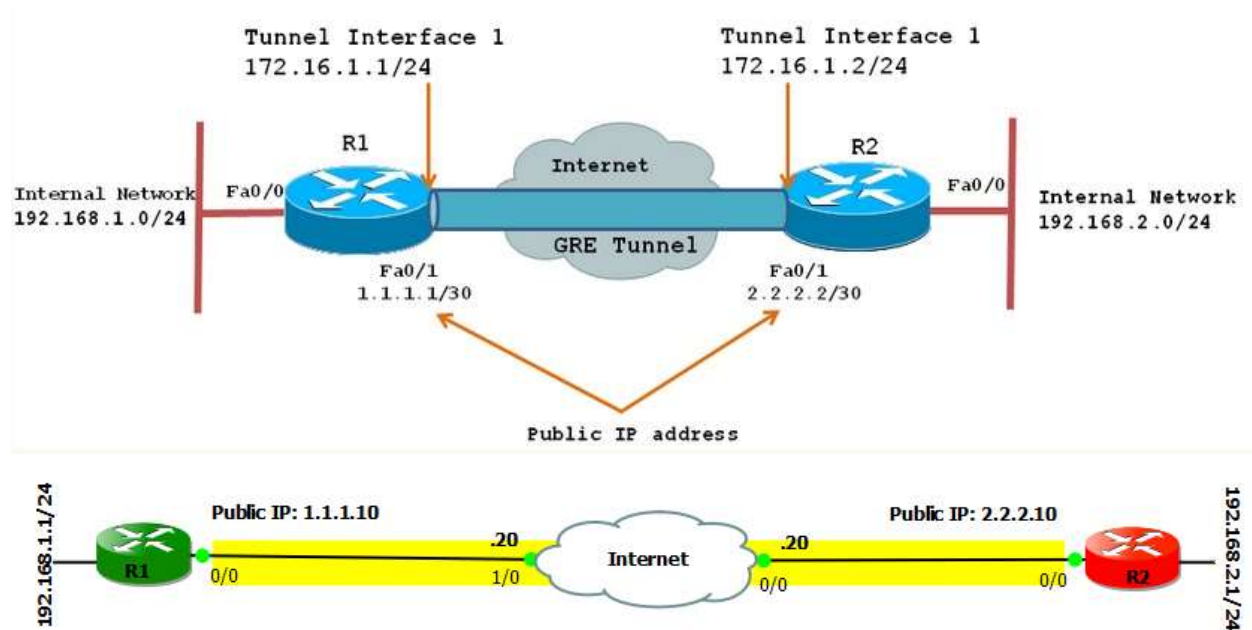


## GRE Lab:



### R1 Basic Configuration

```
R1(config)#interface FastEthernet0/0
R1(config-if)#ip address 1.1.1.10 255.0.0.0
R1(config-if)#no shutdown
R1(config-if)#interface Loopback0
R1(config-if)#ip address 192.168.1.1 255.255.255.0
```

### R2 Basic Configuration

```
R2(config)#interface FastEthernet0/0
R2(config-if)#ip address 2.2.2.10 255.0.0.0
R2(config-if)#no shutdown
R2(config-if)#interface Loopback0
R2(config-if)#ip address 192.168.2.1 255.255.255.0
```

### Internet Basic Configuration

```
Internet(config)#interface FastEthernet0/0
Internet(config-if)#ip address 2.2.2.20 255.0.0.0
Internet(config-if)#no shutdown
Internet(config-if)#interface GigabitEthernet1/0
Internet(config-if)#ip address 1.1.1.20 255.0.0.0
Internet(config-if)#no shutdown
```

### **R1 GRE Configuration**

```
R1(config-if)#ip route 2.0.0.0 255.0.0.0 1.1.1.20
```

```
R1(config)#interface Tunnel1
```

```
R1(config-if)#ip address 172.16.1.1 255.255.255.0
```

```
R1(config-if)#tunnel source 1.1.1.10
```

```
R1(config-if)#tunnel destination 2.2.2.10
```

```
R1(config)#router eigrp 11
```

```
R1(config-router)#network 192.168.1.0
```

```
R1(config-router)#network 172.16.1.0
```

### **R2 GRE Configuration**

```
R2(config-if)#ip route 1.0.0.0 255.0.0.0 2.2.2.20
```

```
R2(config)#interface Tunnel1
```

```
R2(config-if)#ip address 172.16.1.2 255.255.255.0
```

```
R2(config-if)#tunnel source 2.2.2.10
```

```
R2(config-if)#tunnel destination 1.1.1.10
```

```
R2(config)#router eigrp 11
```

```
R2(config-router)#network 192.168.1.0
```

```
R2(config-router)#network 172.16.1.0
```

### **Verification Commands**

```
R1#traceroute 192.168.2.1
```

```
R2#traceroute 192.168.1.1
```

```
R1#ping 192.168.2.1 source loopback 0
```

```
R2#ping 192.168.1.1 source loopback 0
```

```
R1#show ip eigrp neighbors
```

```
R2#show ip eigrp neighbors
```