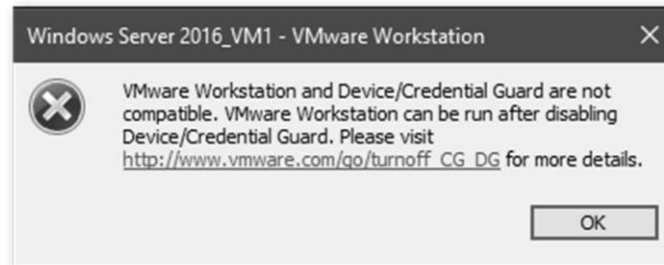


Credential Guard / VMWare Workstation Incompatibility Fix

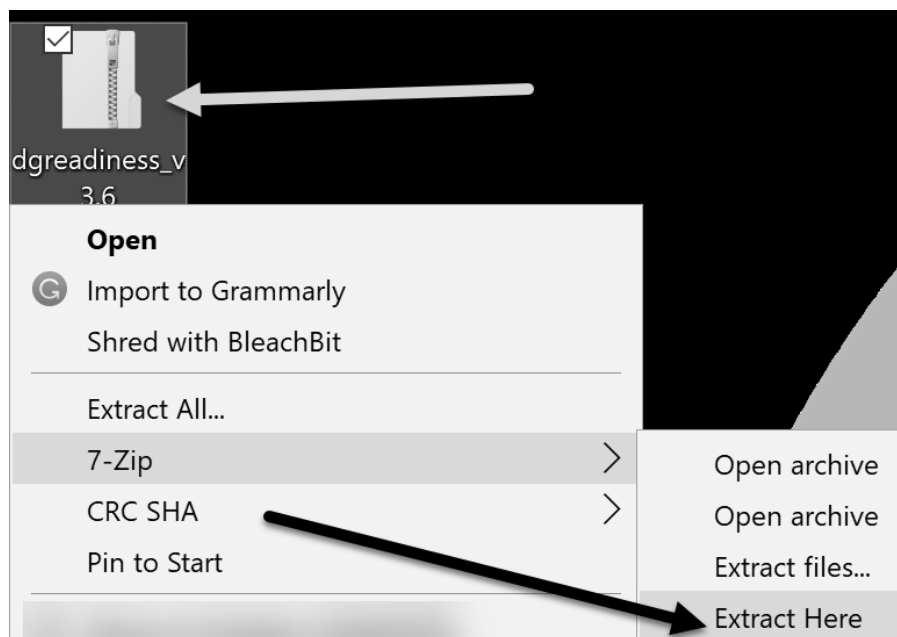
If you have Credential Guard enabled, and you attempt to run VMWare Workstation, you may see the following error:



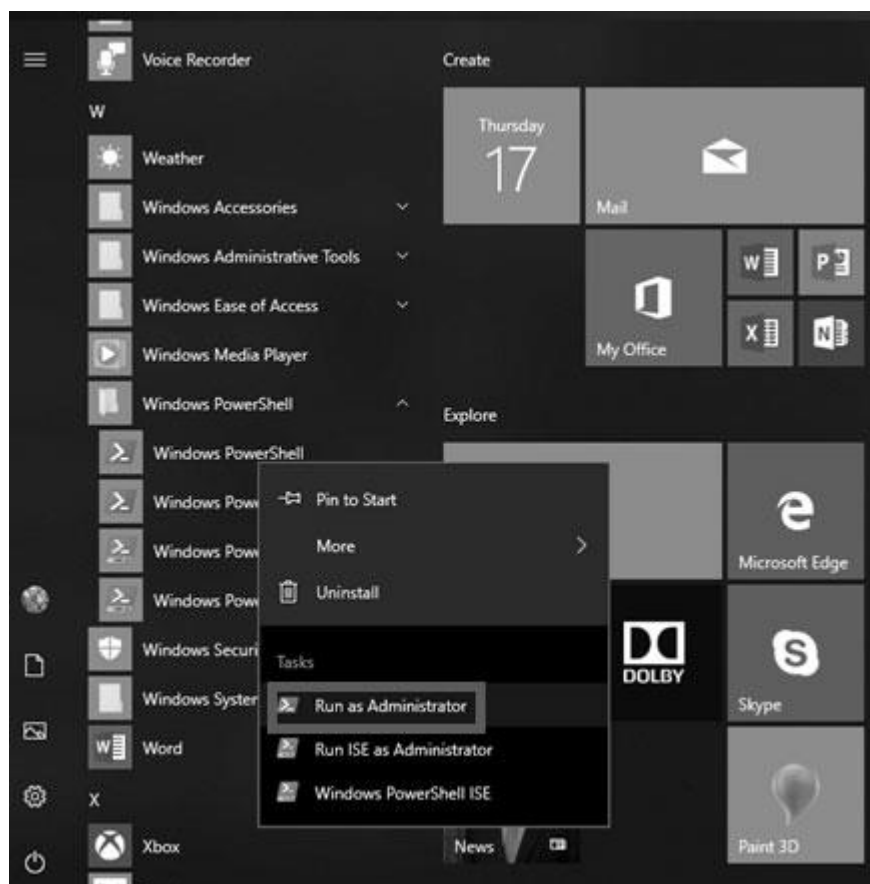
Credential Guard Removal

In order to run VMWare, download the "Device Guard and Credential Guard hardware readiness tool" from the address: <http://dfir.to/CREDGUARD>

1) Move the zip file to your Desktop. Extract the zip file to your Desktop.



2) Run PowerShell as administrator:



3) In the PowerShell window, change the directory to the folder where the script is extracted. For example, in the command below, the zip file was extracted to the Desktop folder. **Note:** *The exact version might change over time. In this example, the version is 3.6, but that might change if Microsoft updates the tool. If it does, in each command below, the folder path might change slightly based on the version number.*

The command is in bold:

```
PS C:\WINDOWS\system32> cd ~\Desktop\dgreadiness_v3.6\
```

4) Run the following commands. Again, the commands are in bold. **Note:** *In this example, the version is 3.6, but that might change if Microsoft updates the tool. If it does, the DG_Readiness script name might change slightly based on the version number.*

```
PS C:\Users\User\Desktop\dgreadiness_v3.6> Set-ExecutionPolicy Unrestricted
```

```
PS C:\Users\User\Desktop\dgreadiness_v3.6> .\DG_Readiness_Tool_v3.6.ps1 -Disable
```

You may get some errors when running the script. If you see the text "Disabling Hyper-V and IOMMU successful", the script has done its job. "This command will turn off Credential Guard. Note that turning off Credential Guard may require a reboot for changes to take effect.

Once Credential Guard has been disabled, VMWare should run without issue.

Credential Guard Restoration

At the end of your class, if you wish to re-enable Credential Guard, perform steps 2 & 3 and then run the following command (the command should be entered on one line). **Note:** *In this example, the version is 3.6, but that might change if Microsoft updates the tool. If it does, the DG_Readiness script name might change slightly based on the version number.*

```
PS C:\Users\User\Desktop\dgreadiness_v3.6>  
.\DG_Readiness_Tool_v3.6.ps1 -Enable -CG
```

Again, a reboot may be required for the change to take effect.