



<https://t.me/learningnets>



PROJECT

ENG

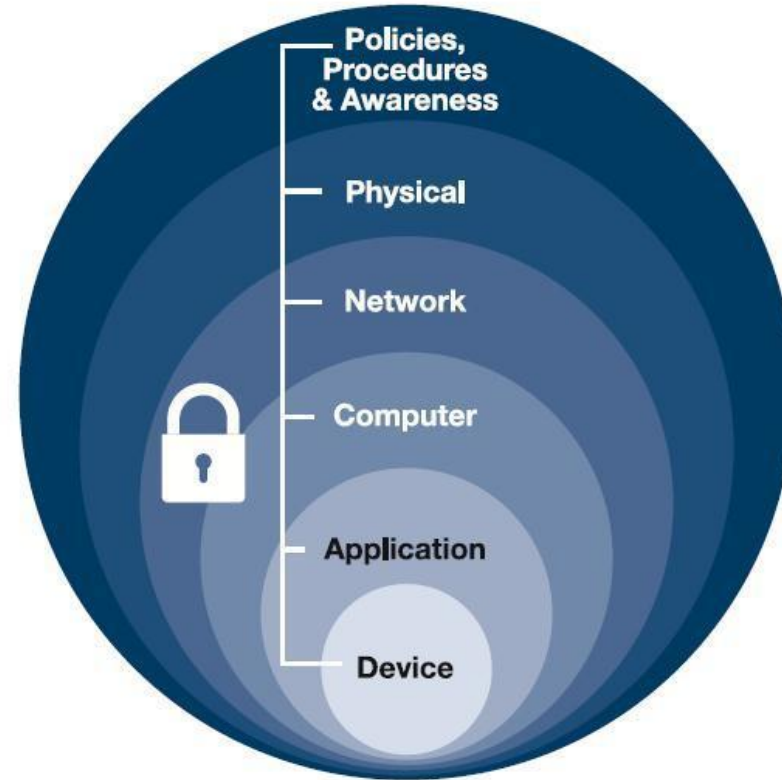
PRO

CYBER SECURITY FOR INDUSTRIAL CONTROL SYSTEMS

By Project **ENG PRO**



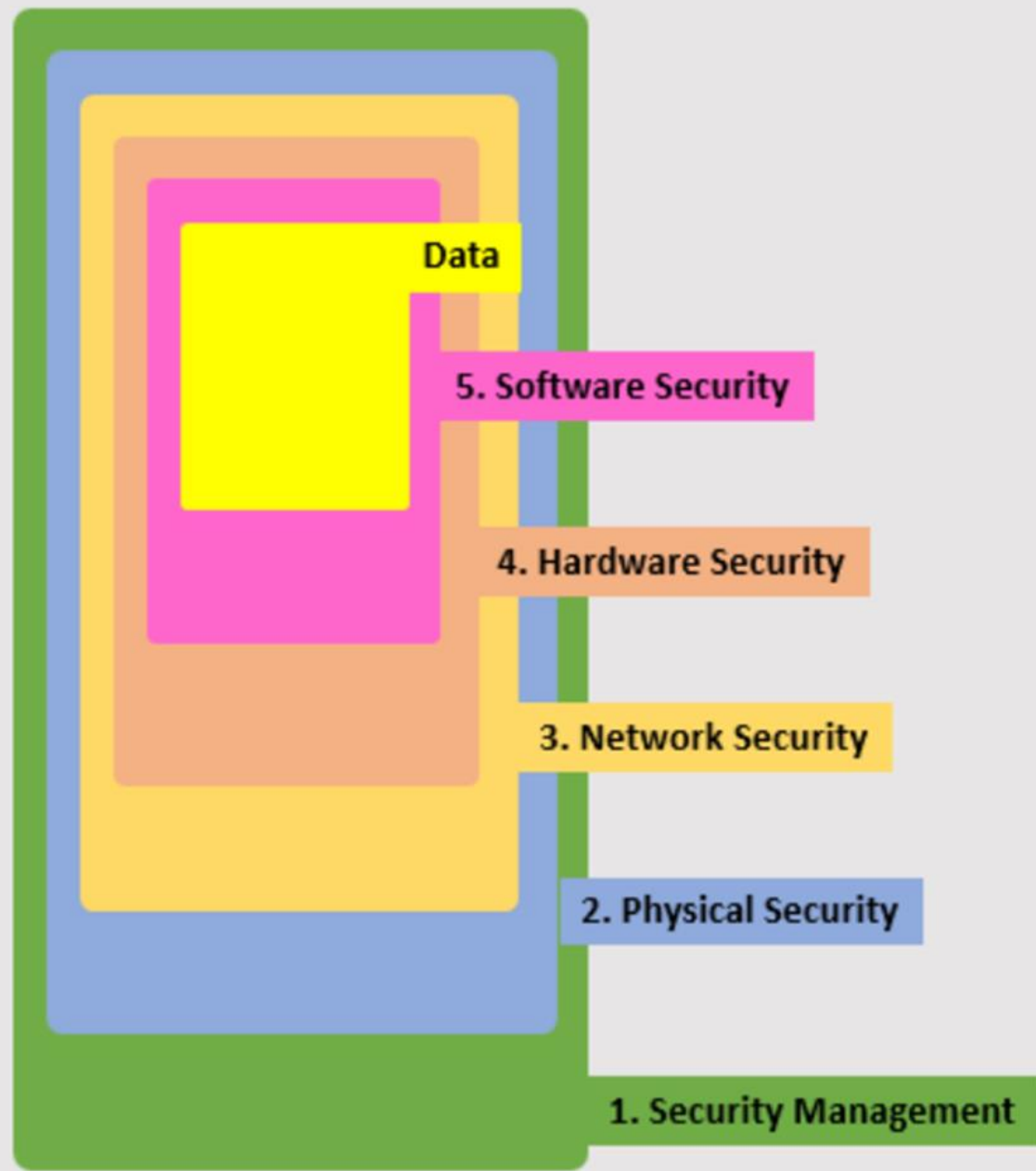
Defense in Depth

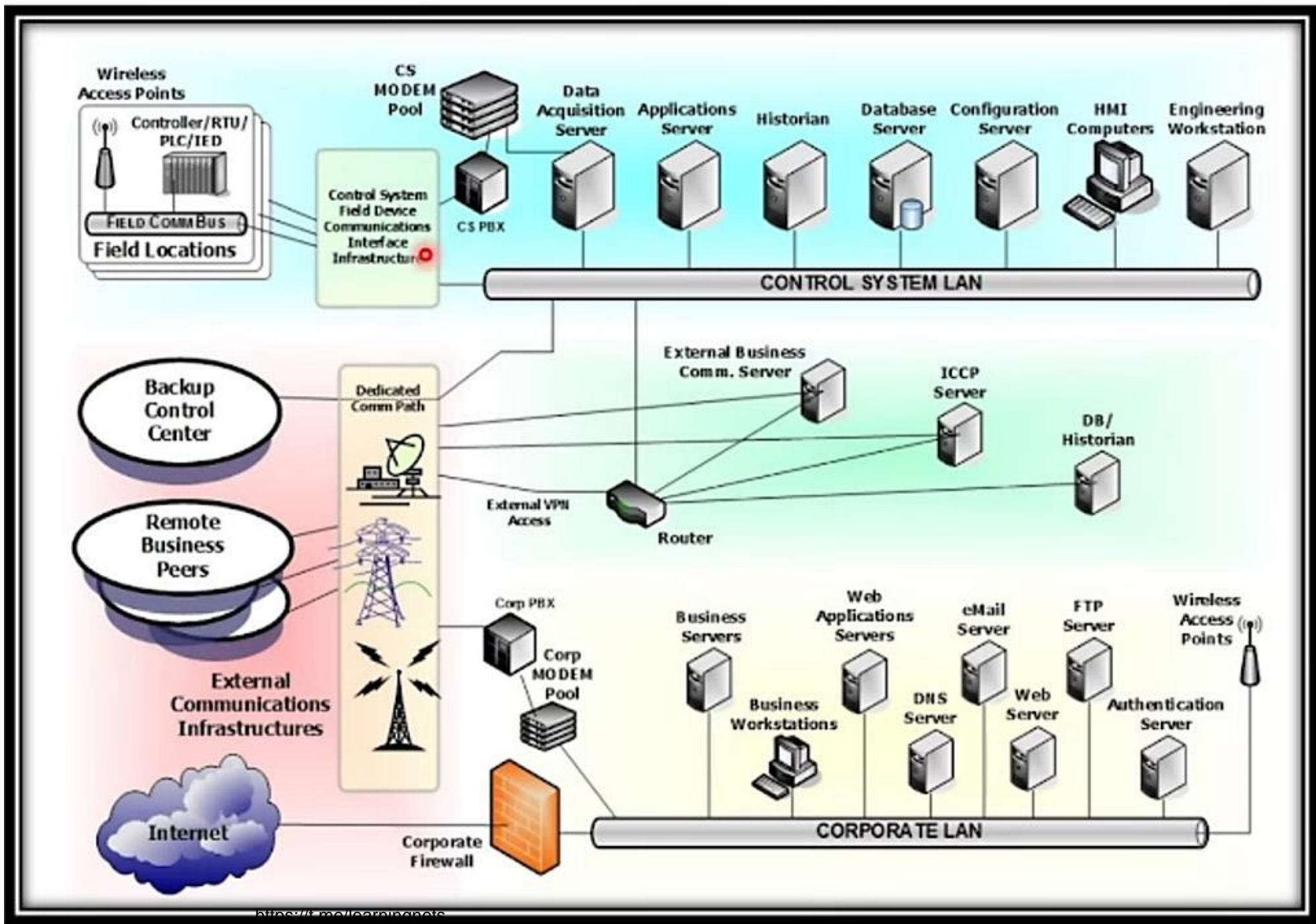


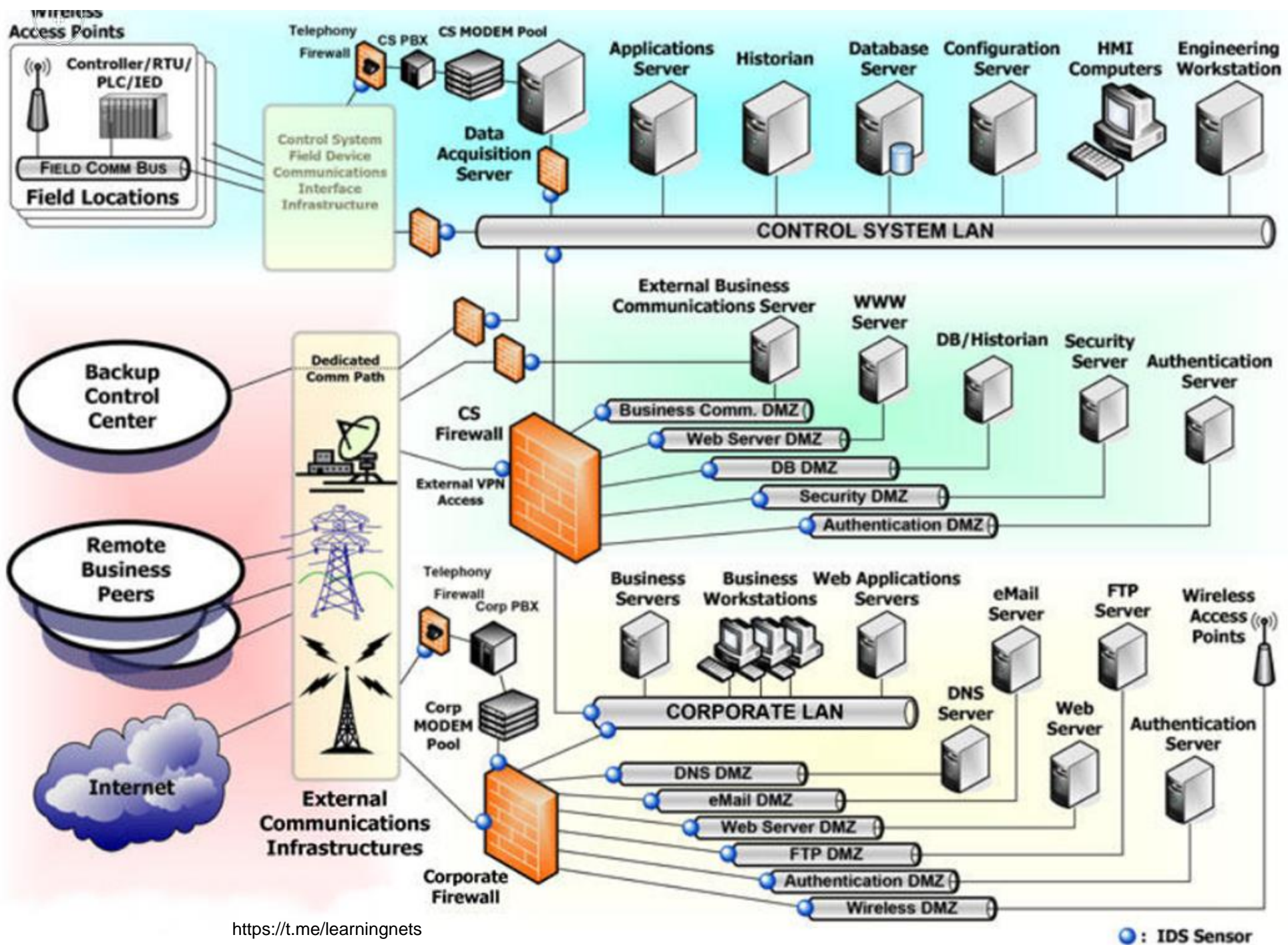
Defense in depth is a strategic approach that leverages multiple layers of security measures to protect an organization's assets.

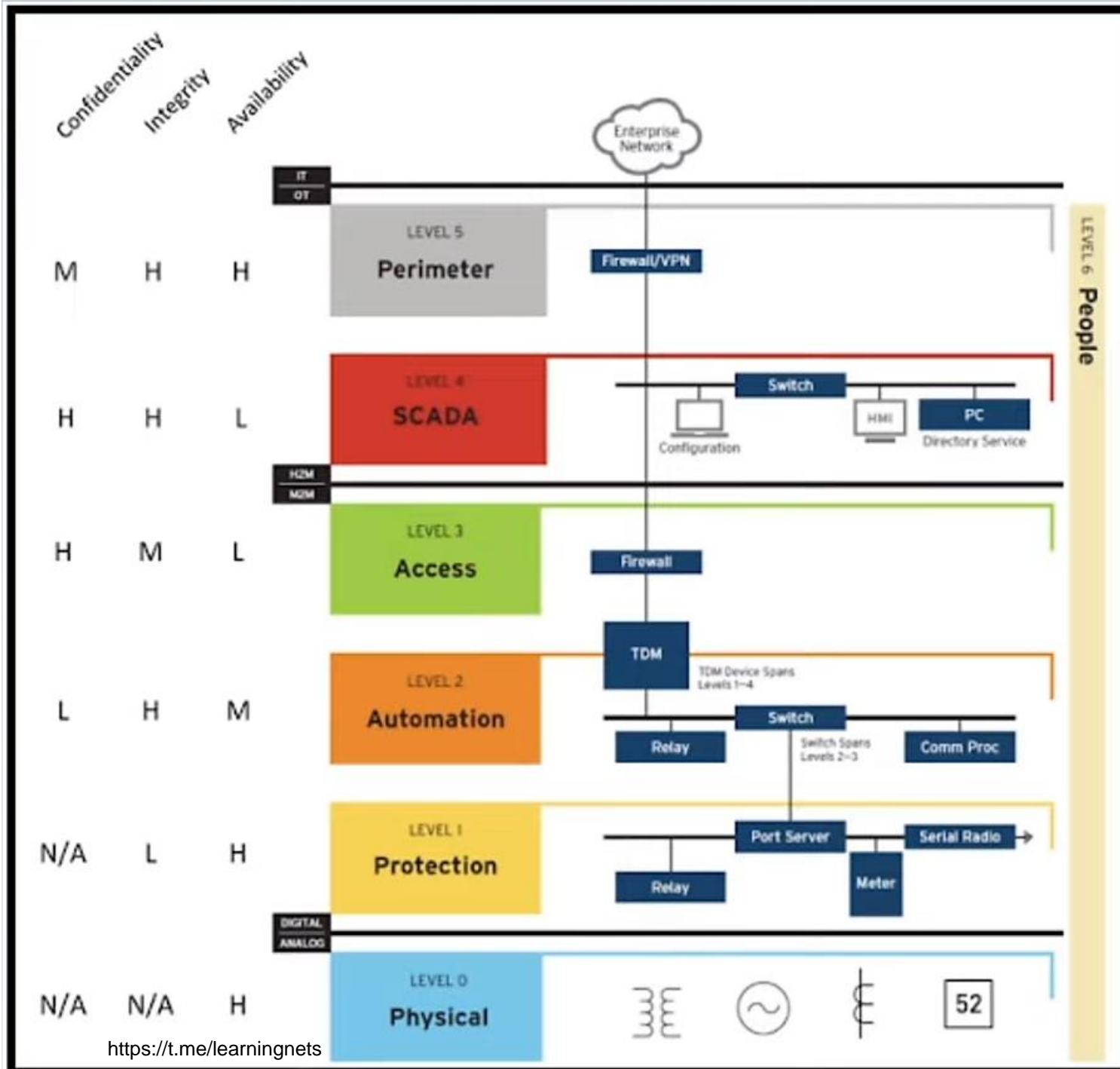
Defense in depth addresses security vulnerabilities not only inherent in hardware and software but also in the human element.

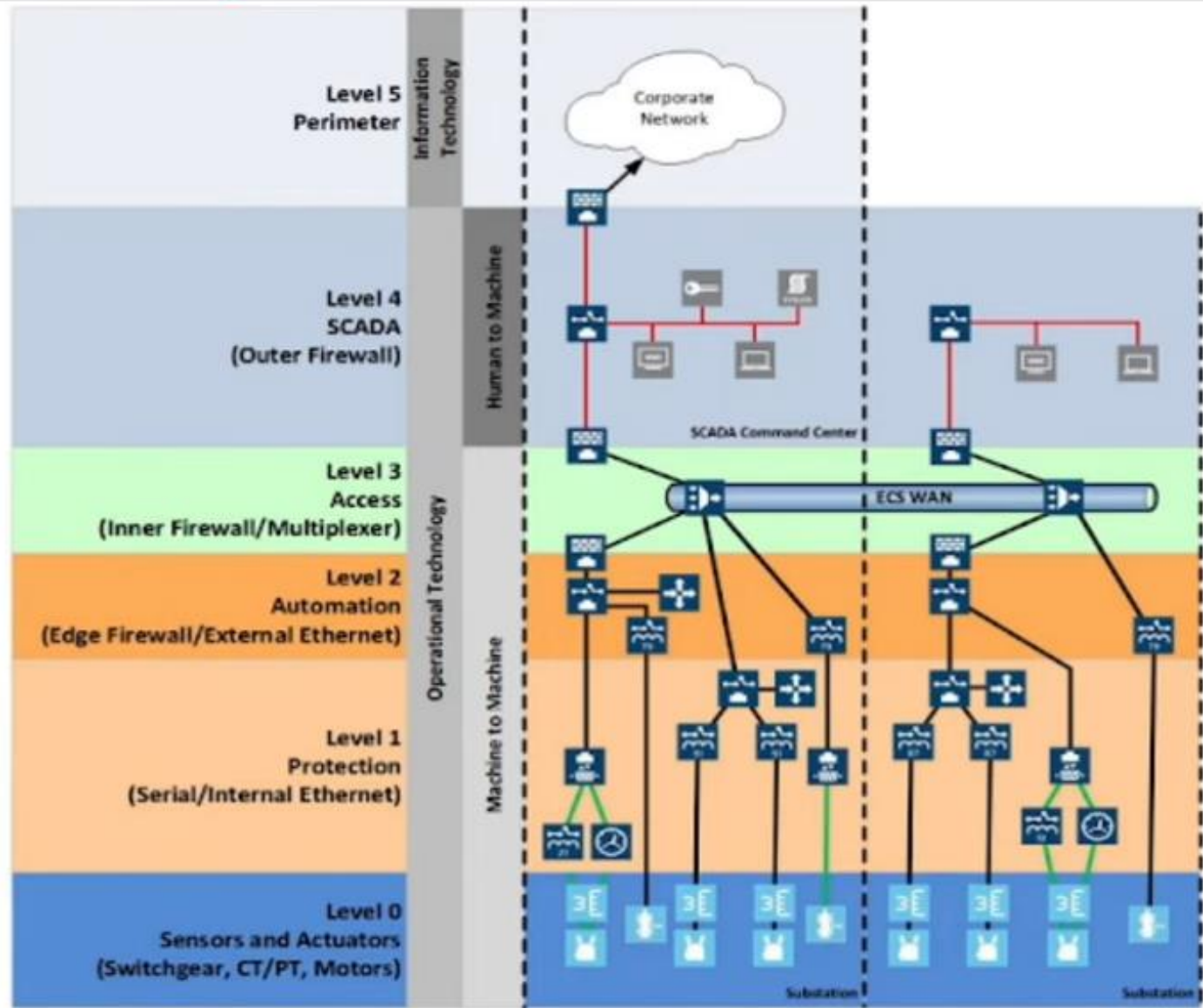






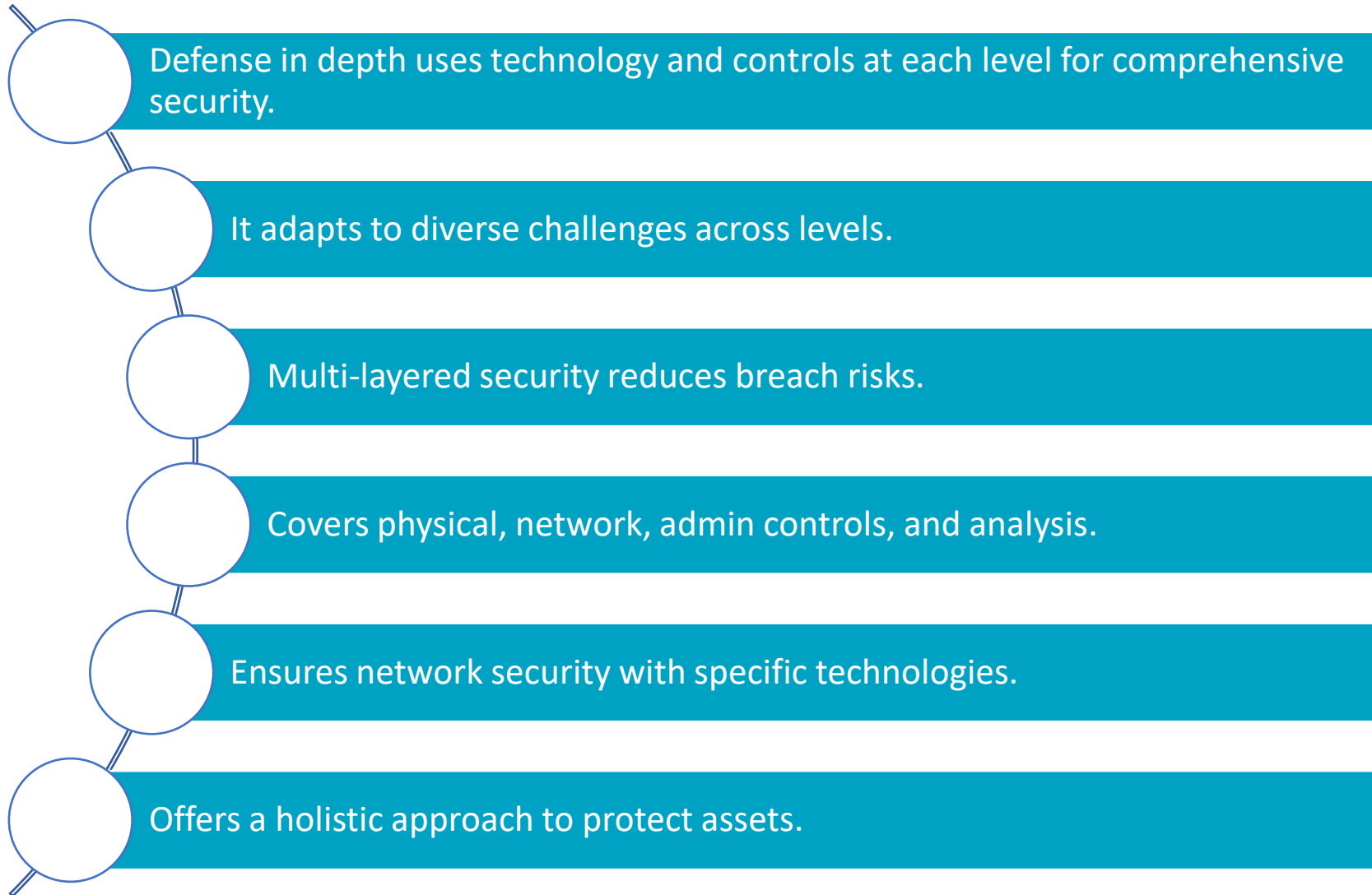






- Legend**
- | | | | |
|--|---|--|---|
| Non-Embedded OS | Embedded OS | Power System Components | Cabling |
| <ul style="list-style-type: none"> Authentication Syslog Server HMI Computer | <ul style="list-style-type: none"> Ethernet Firewall Ethernet Switch Ethernet to Serial Multiplexer | <ul style="list-style-type: none"> Distance Relay Overcurrent Relay Recloser Relay Differential Relay Meter Transformer Circuit Breaker Recloser | <ul style="list-style-type: none"> Serial Machine to Machine Ethernet Human to Machine Ethernet |

Wrap Up





<https://t.me/learningnets>