



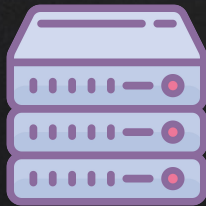
FACEBOOK WEB SERVER
195.44.2.1



HACKER WEB SERVER
44.204.13.14

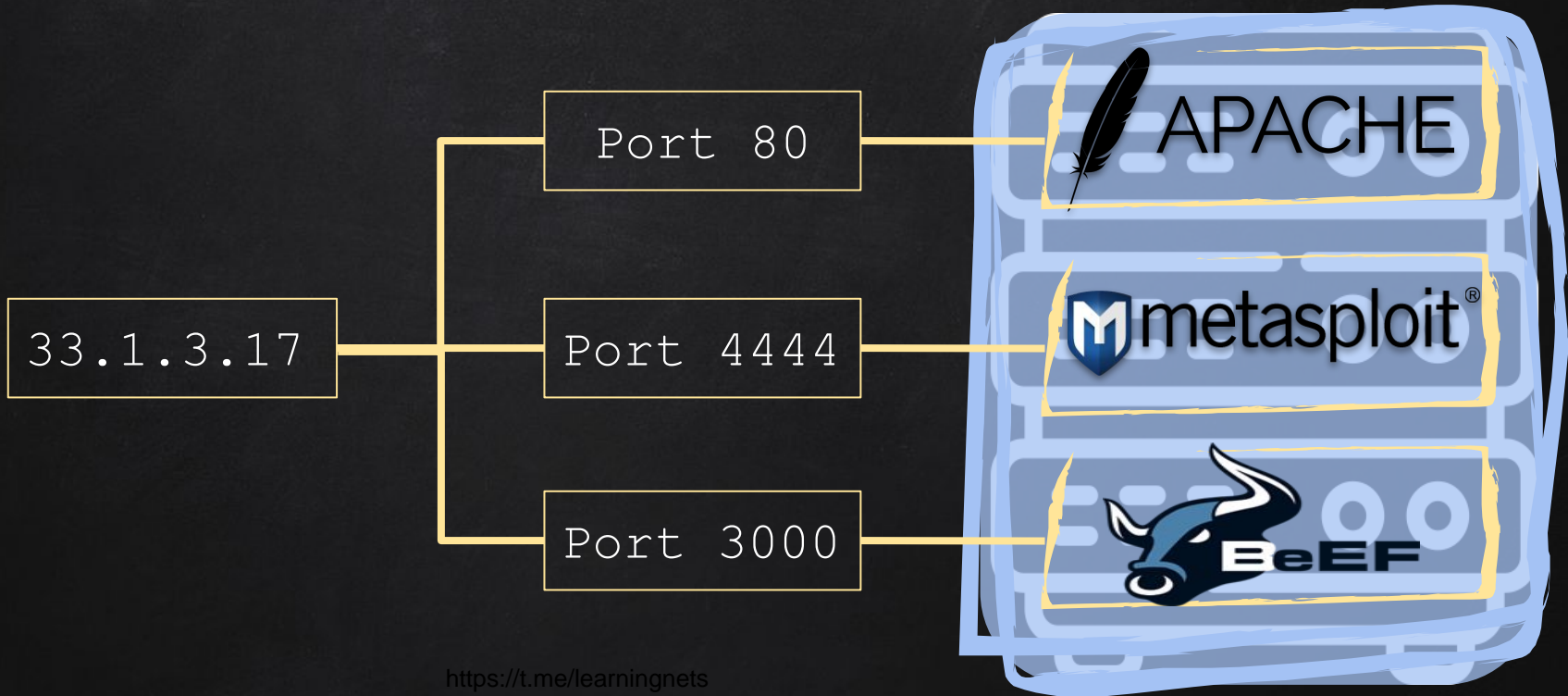
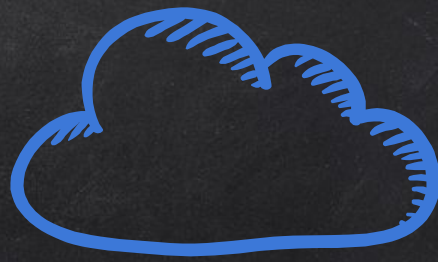


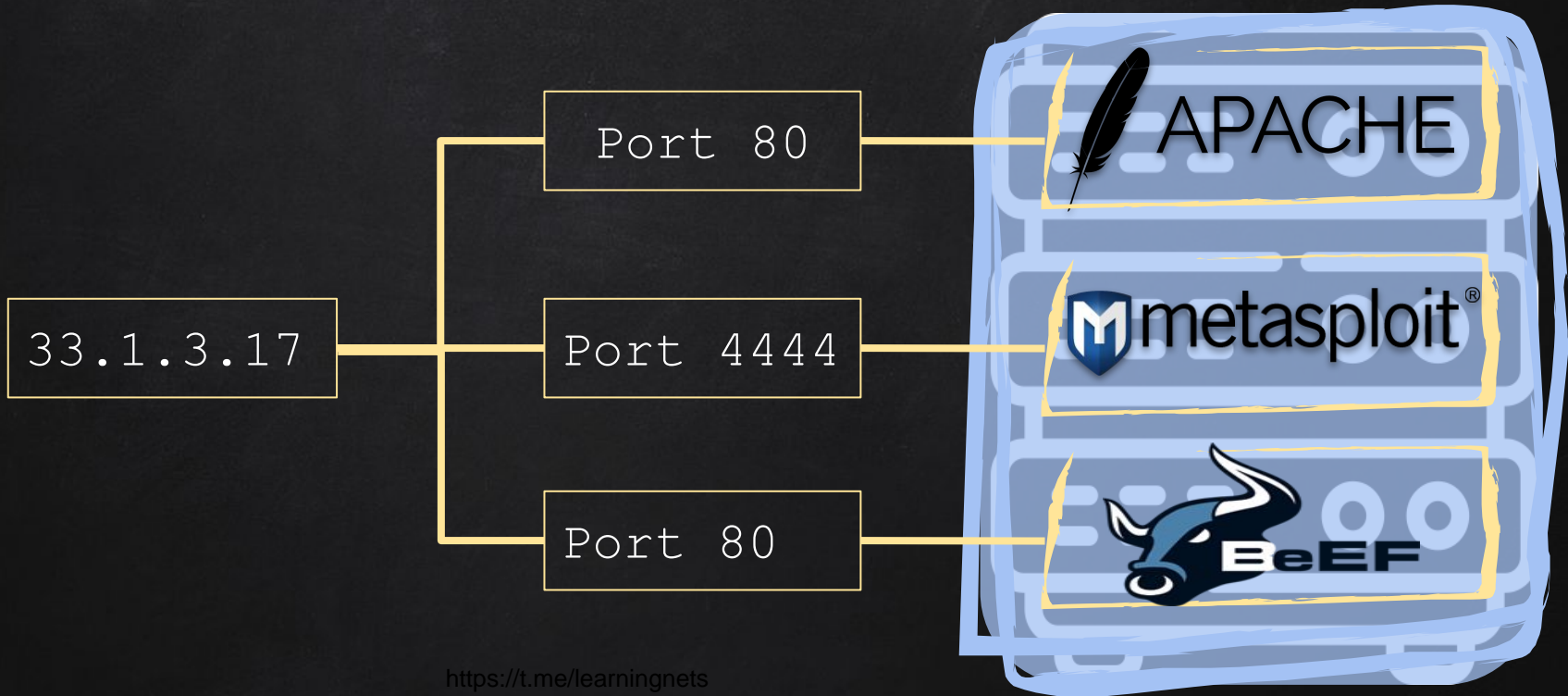
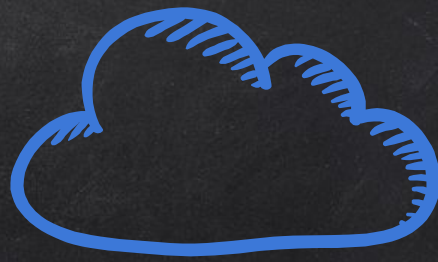
GOOGLE WEB SERVER
204.79.197.200

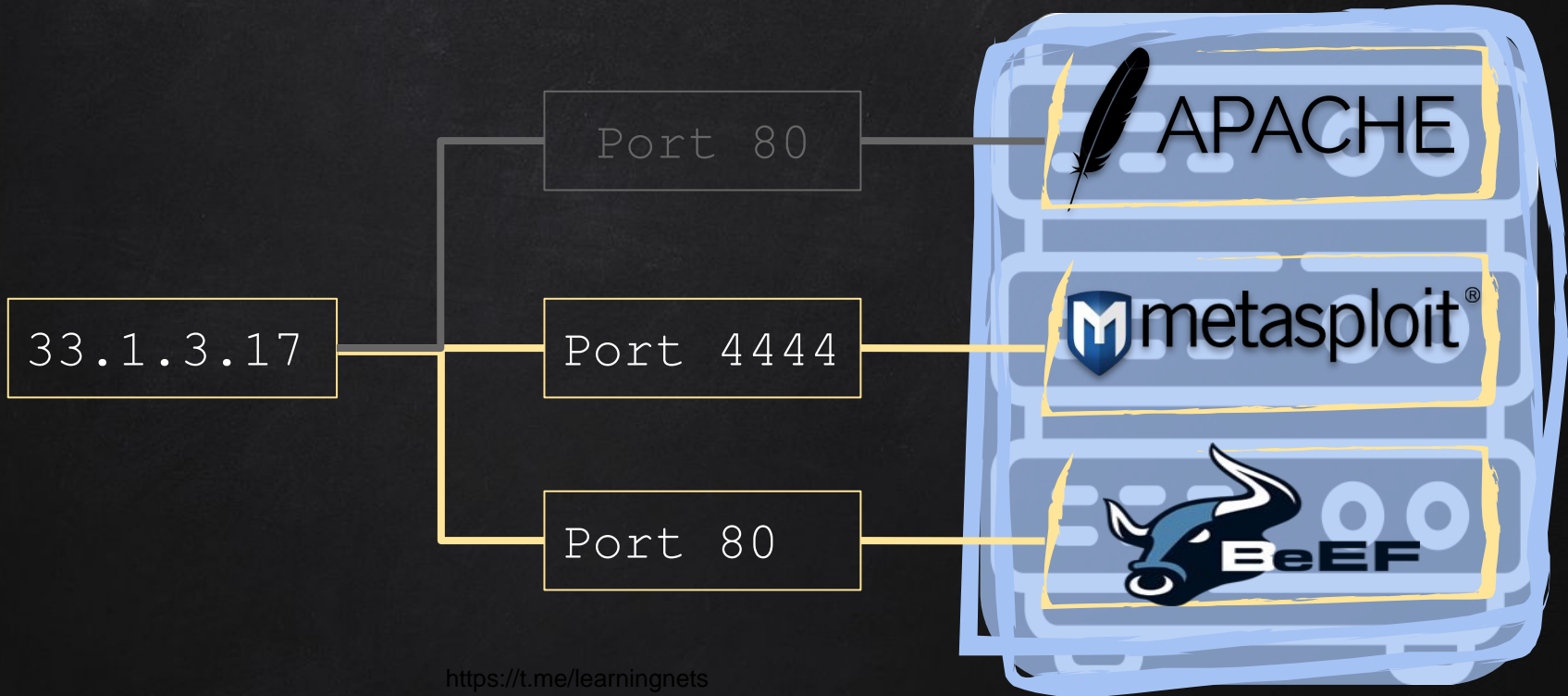
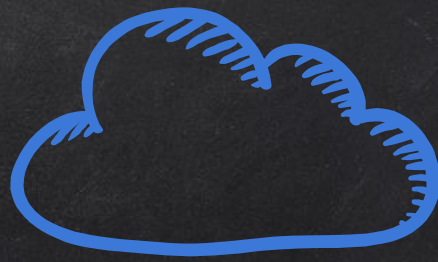


DNS SERVER

<https://t.me/learningnets>









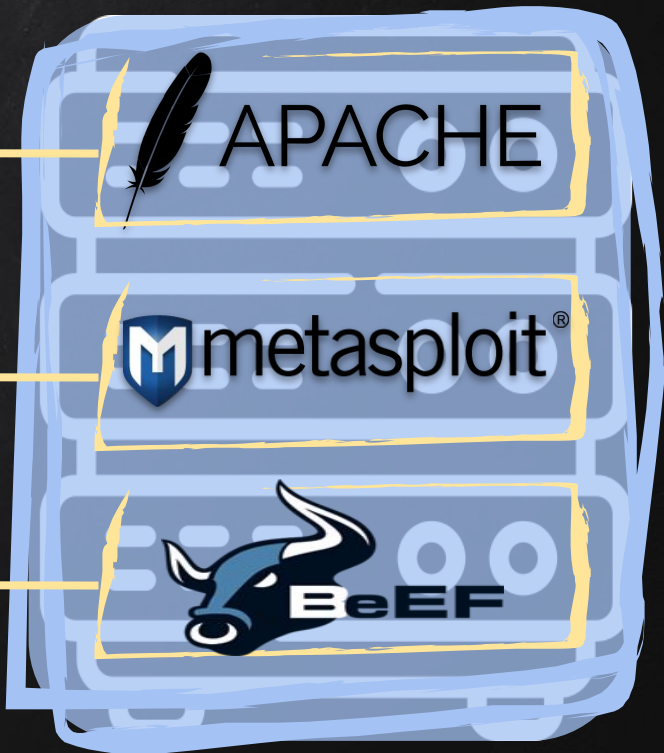
`http://33.1.3.17/`

`33.1.3.17`

Port 80

Port 4444

Port 3000

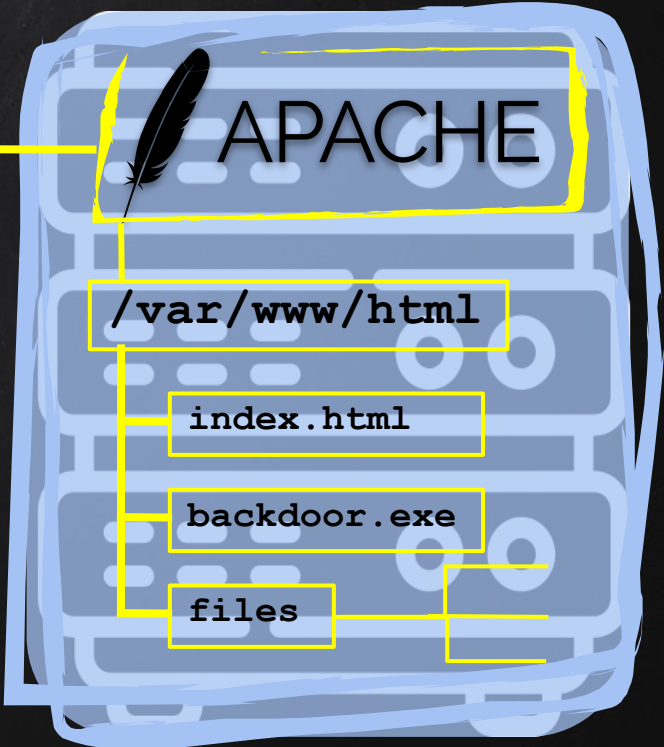


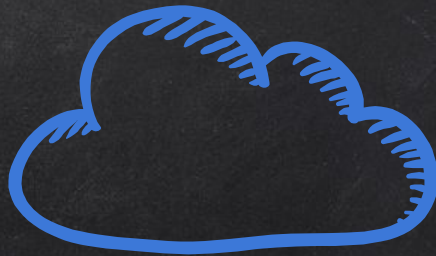


`http://33.1.3.17/`

`33.1.3.17`

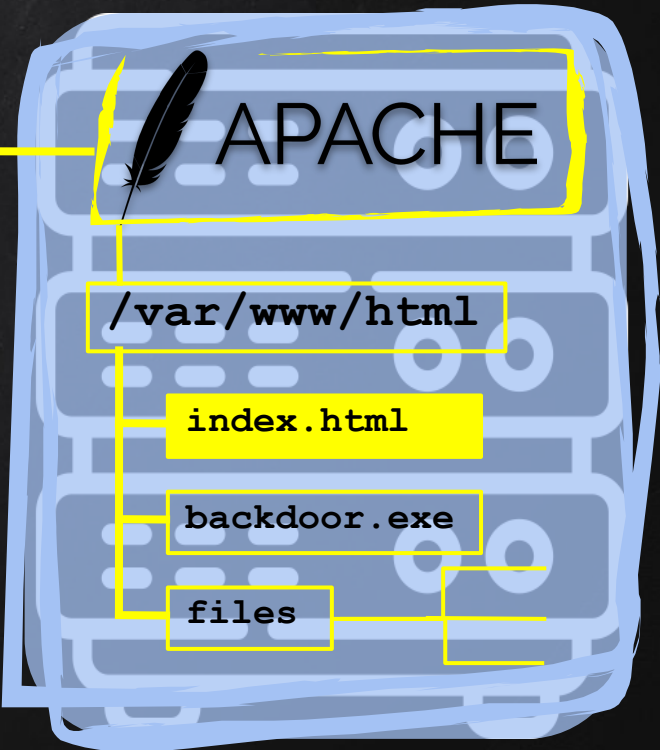
Port 80



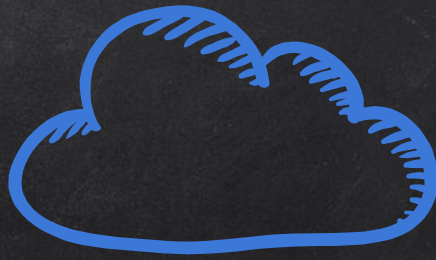


`http://33.1.3.17/`

Port 80



`33.1.3.17`



`http://33.1.3.17/files/1.jpg`

Port 80

`33.1.3.17`

APACHE

`/var/www/html`

`index.html`

`backdoor.exe`

`files`

`1.jpg`

`2.jpg`



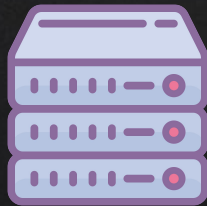
FACEBOOK WEB SERVER
195.44.2.1



HACKER WEB SERVER
44.204.13.14



GOOGLE WEB SERVER
204.79.197.200



DNS SERVER

<https://t.me/learningnets>

facebook.com





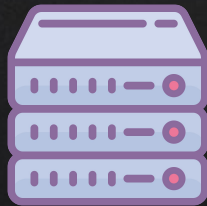
FACEBOOK WEB SERVER
195.44.2.1



HACKER WEB SERVER
44.204.13.14



GOOGLE WEB SERVER
204.79.197.200



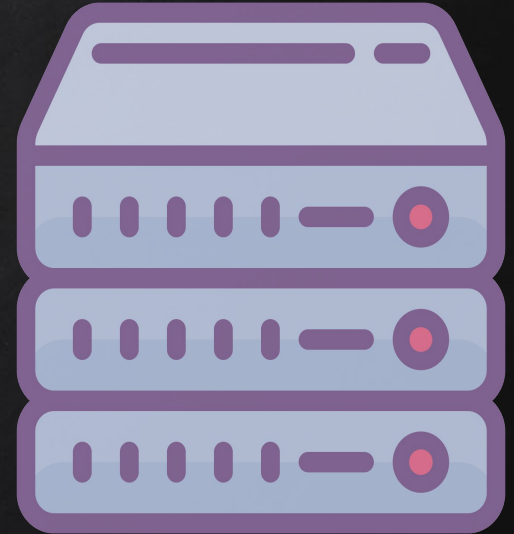
DNS SERVER

<https://t.me/learningnets>



DNS RECORDS

google.com	A	204.79.197.200
facebook.com	A	195.44.2.1
zsecurity.org	A	104.27.153.174
.....etc		





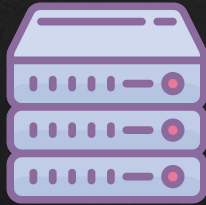
FACEBOOK WEB SERVER
195.44.2.1



HACKER WEB SERVER
44.204.13.14



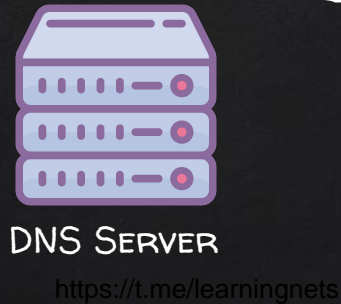
GOOGLE WEB SERVER
204.79.197.200



DNS SERVER

<https://t.me/learningnets>



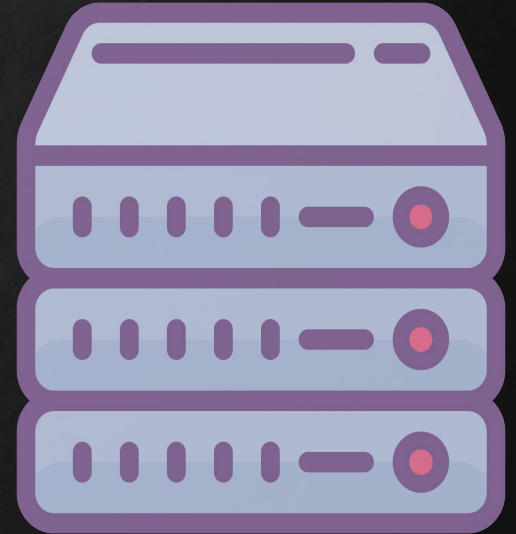


195.44.2.1



DNS RECORDS

google.com	A	204.79.197.200
facebook.com	A	195.44.2.1
zsecurity.org	A	104.27.153.174
loginpage.com	A	44.204.13.14





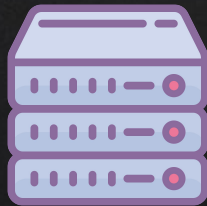
FACEBOOK WEB SERVER
195.44.2.1



HACKER WEB SERVER
44.204.13.14



GOOGLE WEB SERVER
204.79.197.200



DNS SERVER

<https://t.me/learningnets>

loginpage.com





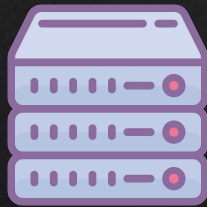
FACEBOOK WEB SERVER
195.44.2.1



HACKER WEB SERVER
44.204.13.14



GOOGLE WEB SERVER
204.79.197.200



DNS SERVER

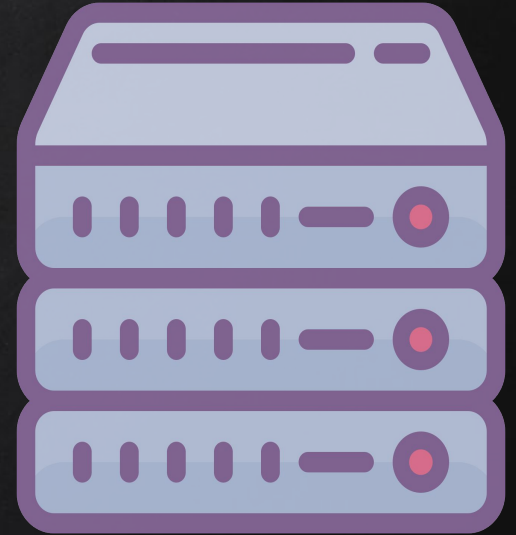
<https://t.me/learningnets>

LOGINPAGE.COM



DNS RECORDS

google.com	A	204.79.197.200
facebook.com	A	195.44.2.1
zsecurity.org	A	104.27.153.174
loginform.com	A	44.204.13.14





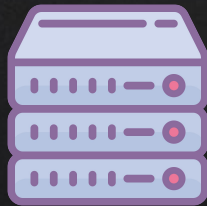
FACEBOOK WEB SERVER
195.44.2.1



HACKER WEB SERVER
44.204.13.14



GOOGLE WEB SERVER
204.79.197.200



DNS SERVER

<https://t.me/learningnets>





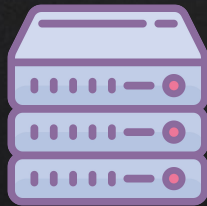
FACEBOOK WEB SERVER
195.44.2.1



HACKER WEB SERVER
44.204.13.14



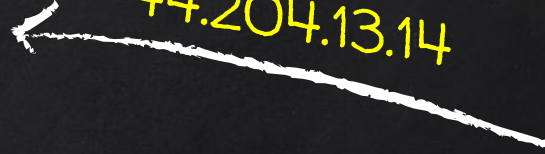
GOOGLE WEB SERVER
204.79.197.200



DNS SERVER

<https://t.me/learningnets>

44.204.13.14





HACKER WEB SERVER
44.204.13.14



CLOUDFLARE



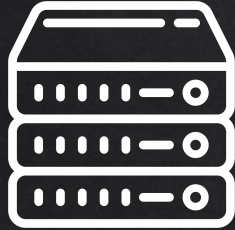
HTTPS

HTTP(S)

SECURE
SSL / TLS



HTTP



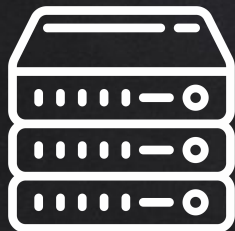
GOOGLE.COM

Password





HTTP

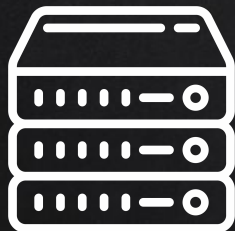


GOOGLE.COM

Password



HTTPS



GOOGLE.COM

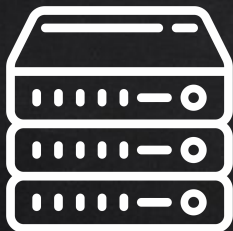




PRIVATE KEY



PUBLIC KEY



GOOGLE.COM

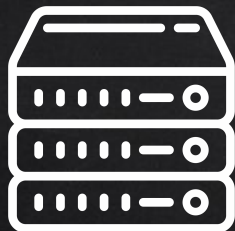




PRIVATE KEY



TLS CERTIFICATE



GOOGLE.COM

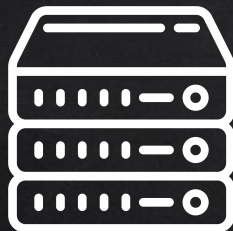




PRIVATE KEY



TLS
CERTIFICATE



GOOGLE.COM



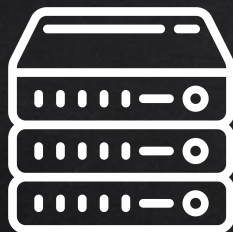
TLS
CERTIFICATE



PRIVATE KEY



TLS
CERTIFICATE



GOOGLE.COM



TLS
CERTIFICATE

WHAT IS A LET'S ENCRYPT?

- Certificate authority.
- Non-profit organisation.



→ Can be used to generate **free** TLS certificates.