

Installing EVE-NG on VMWare Workstation:

Download the Community Edition of EVE-NG. Use the MEGA/Google links Full ISO.

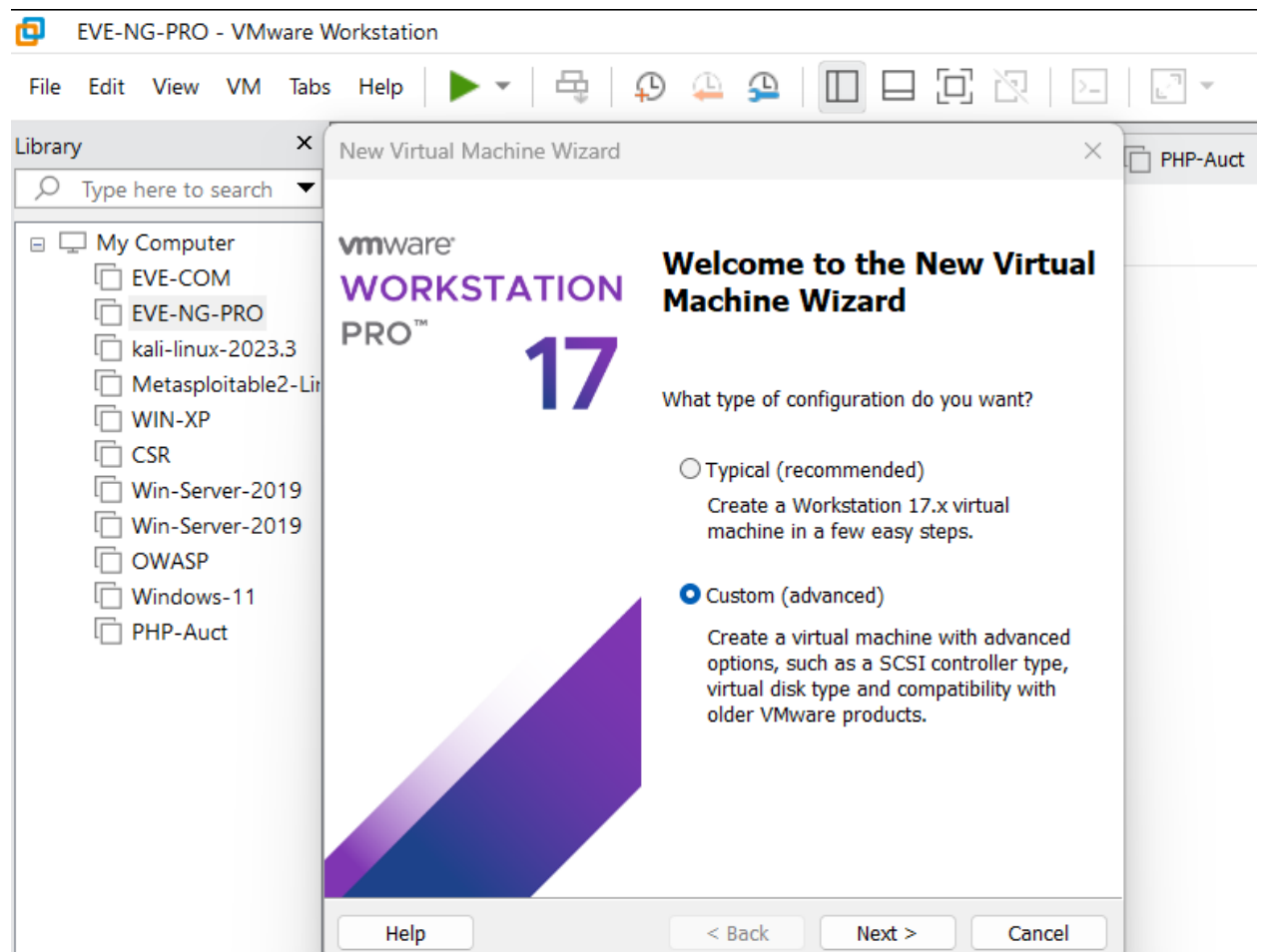
Free EVE Community Edition Version 6.2.0-4

EVE-NG Community Full ISO: 3.2 Gb_

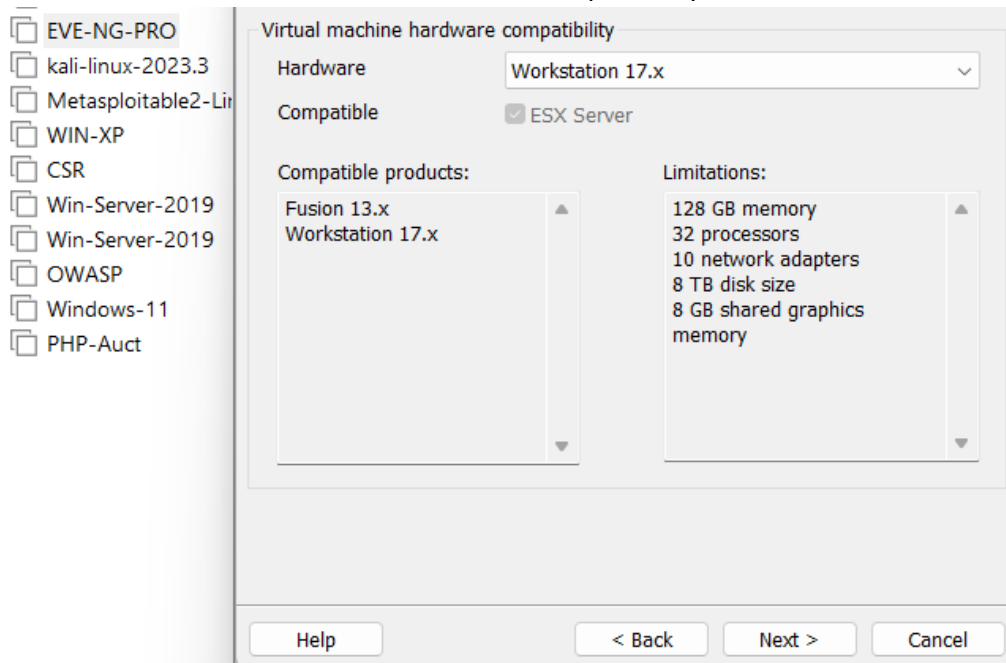
- [EVE-NG-PRO Full ISOS – MEGA Mirror](#)
- [EVE-NG CE Full ISO – direct link](#)

ISO	Algorithm	Checksum
	SHA1	32b189ab6570aed6fa61f202e090c3a4cf962077
	SHA256	a1c035135d618ea86975c9e8d03df549889999adbaecf

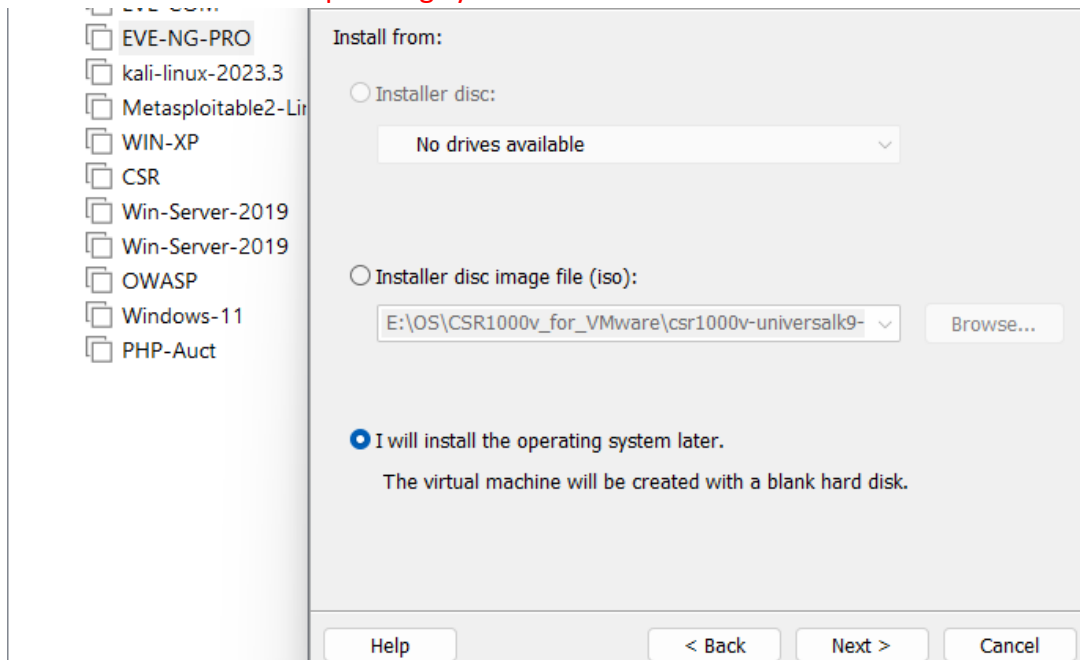
Create a New Virtual machine, click on **File > New Virtual Machine** choose **Custom (Advanced)** click **Next**.



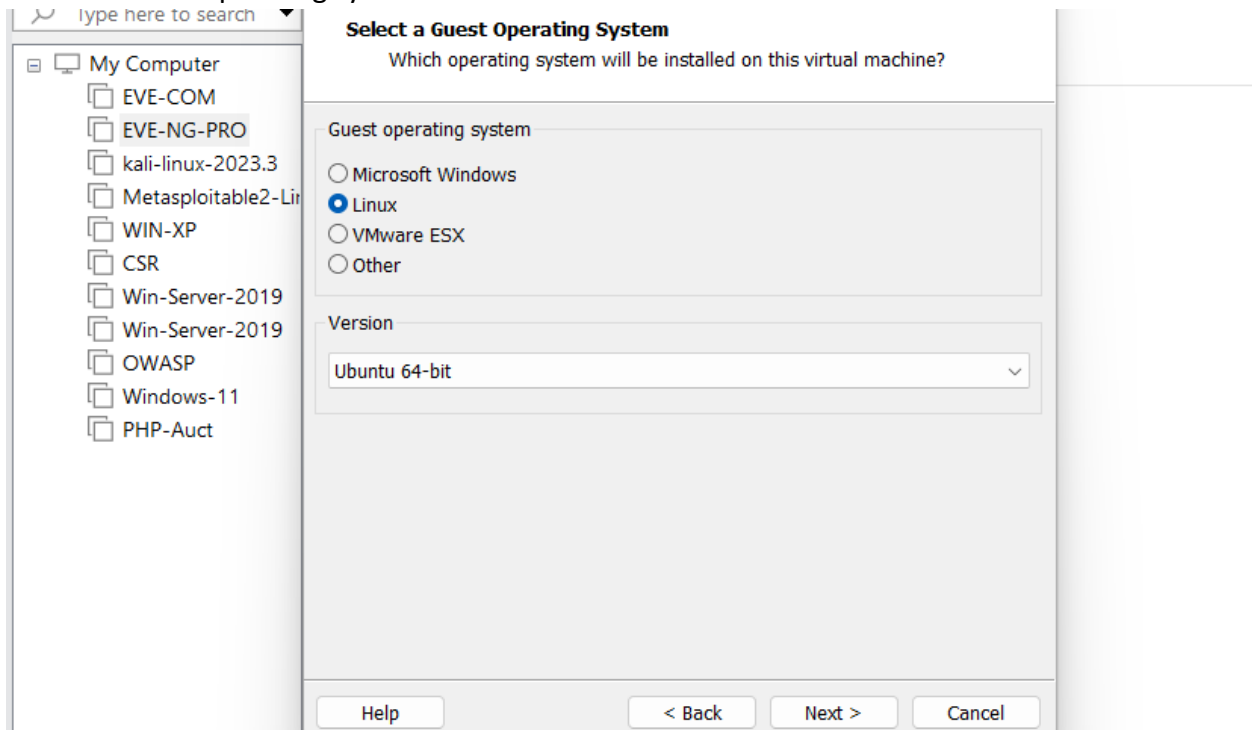
Choose the default Virtual machine hardware compatibility and click **Next**.



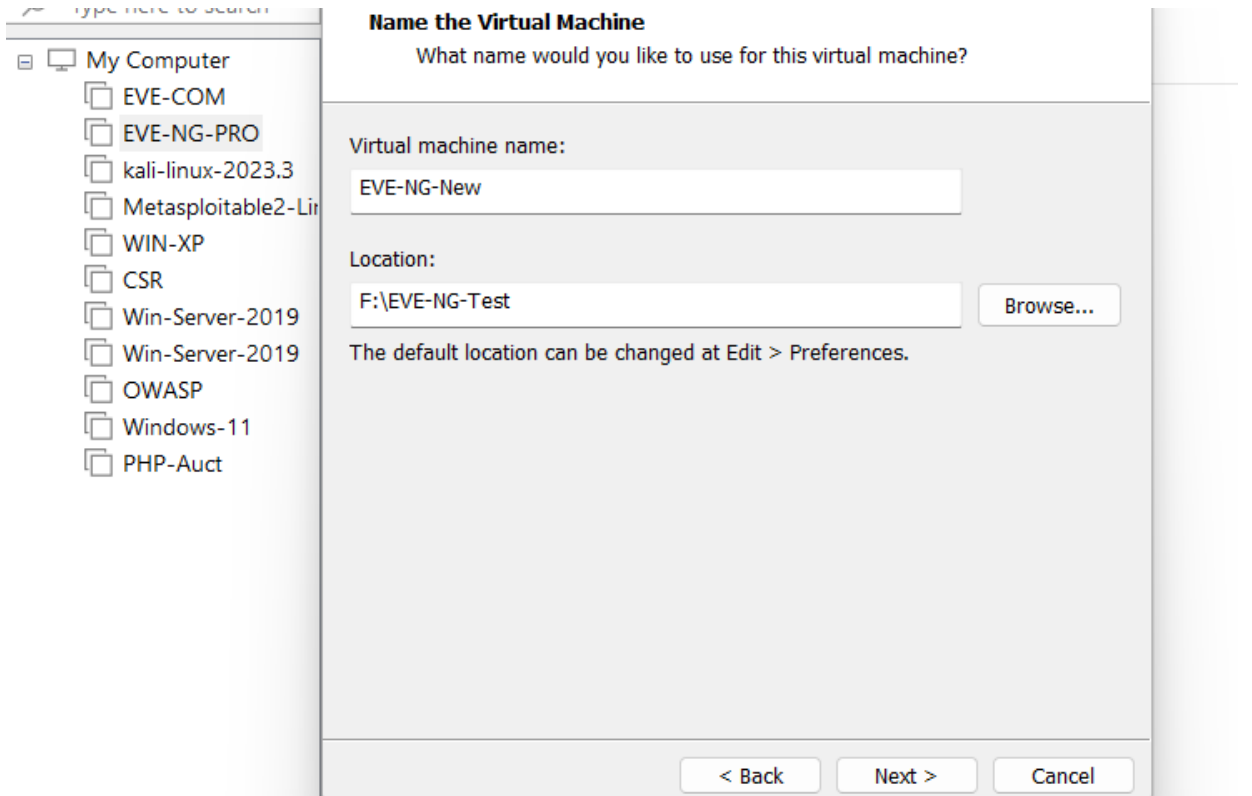
Select **"I will install the operating system later"** and click **Next**.



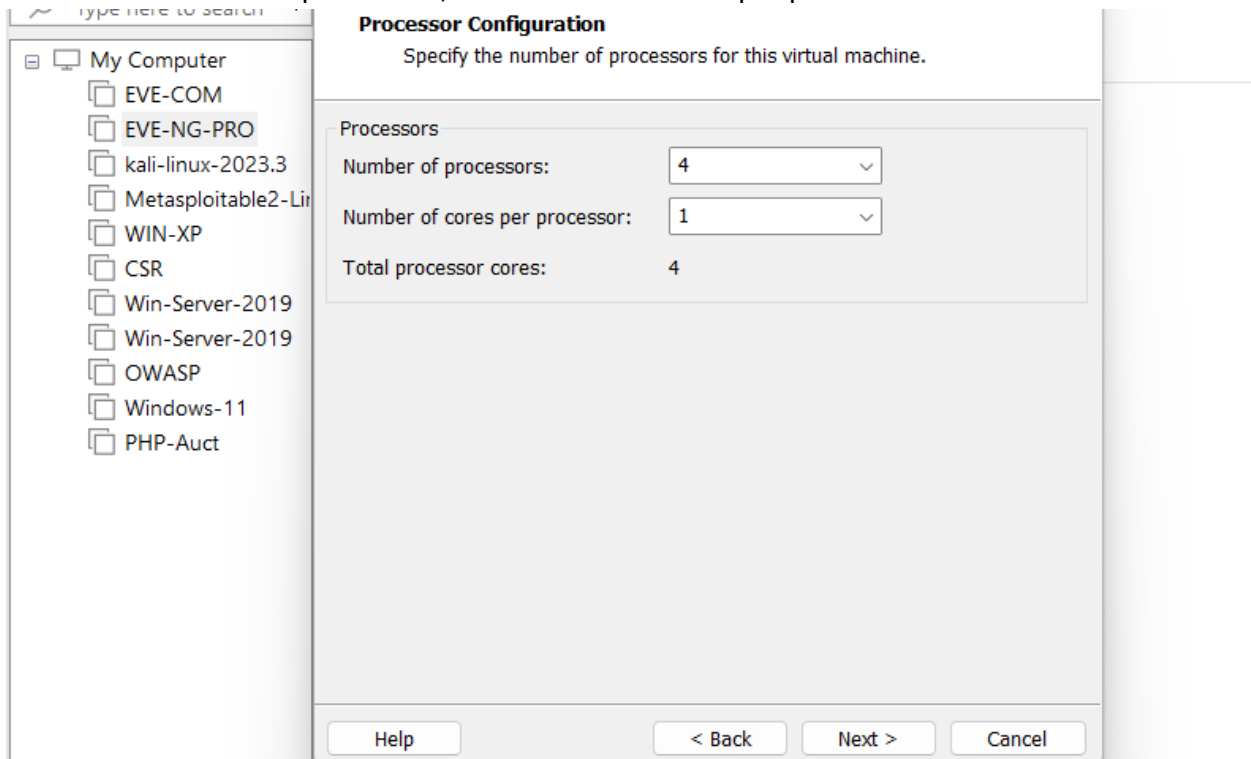
Select a Guest Operating system: **Linux** and select the version: **Ubuntu 64-bit**



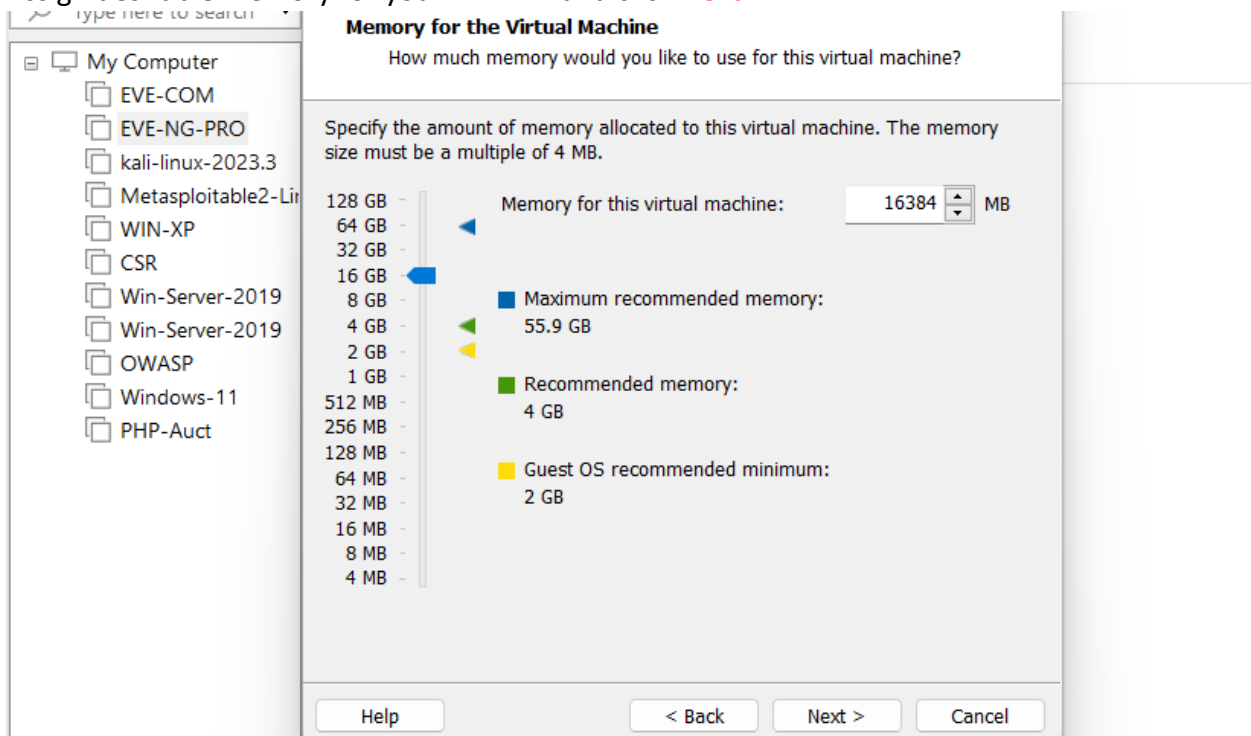
Enter the name for your EVE-COMM VM and select Location where your EVE VM will be stored on the host PC and click **Next**.



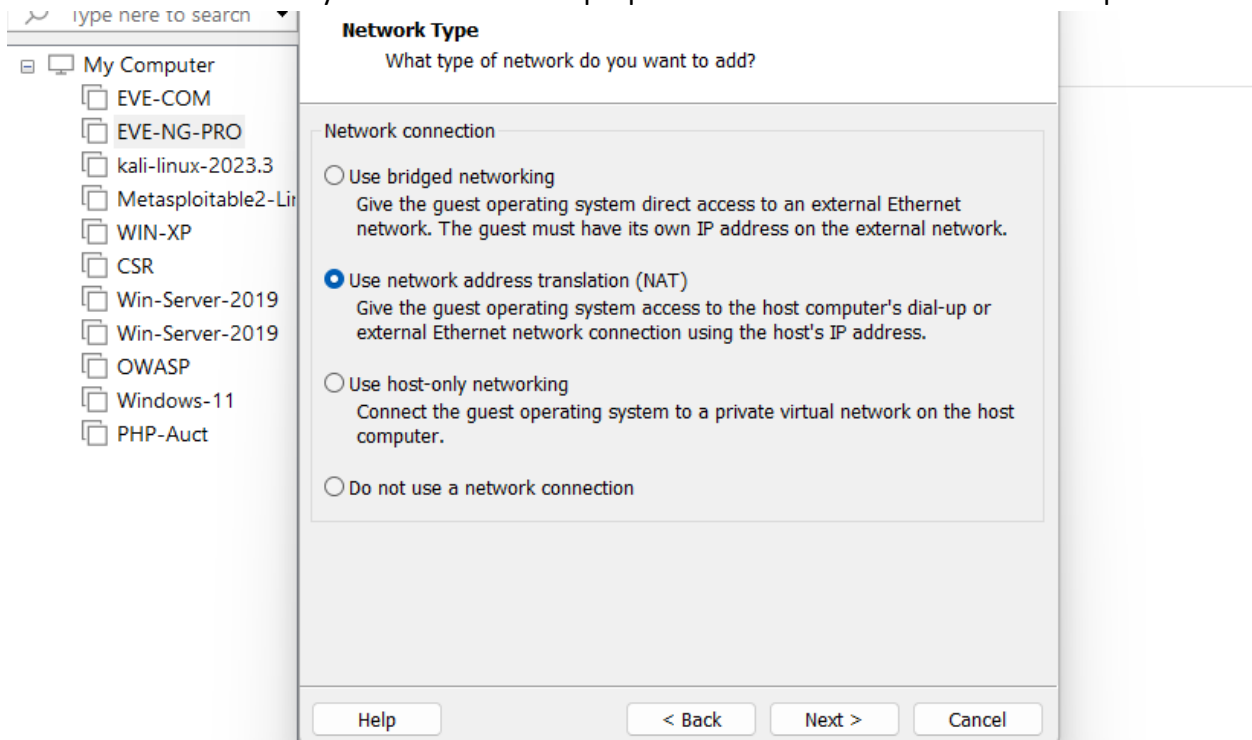
Select max Number of processors, and Number of cores per processor =1



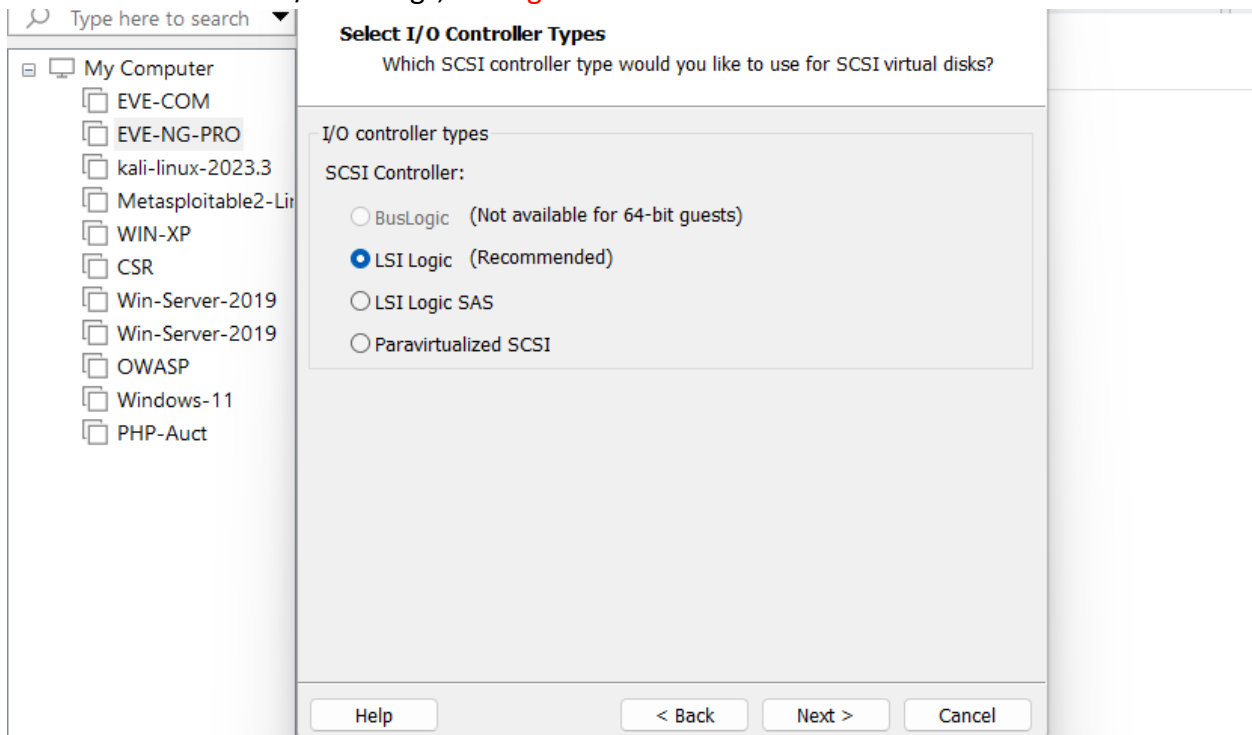
Assign desirable memory for your EVE VM and click **Next**.



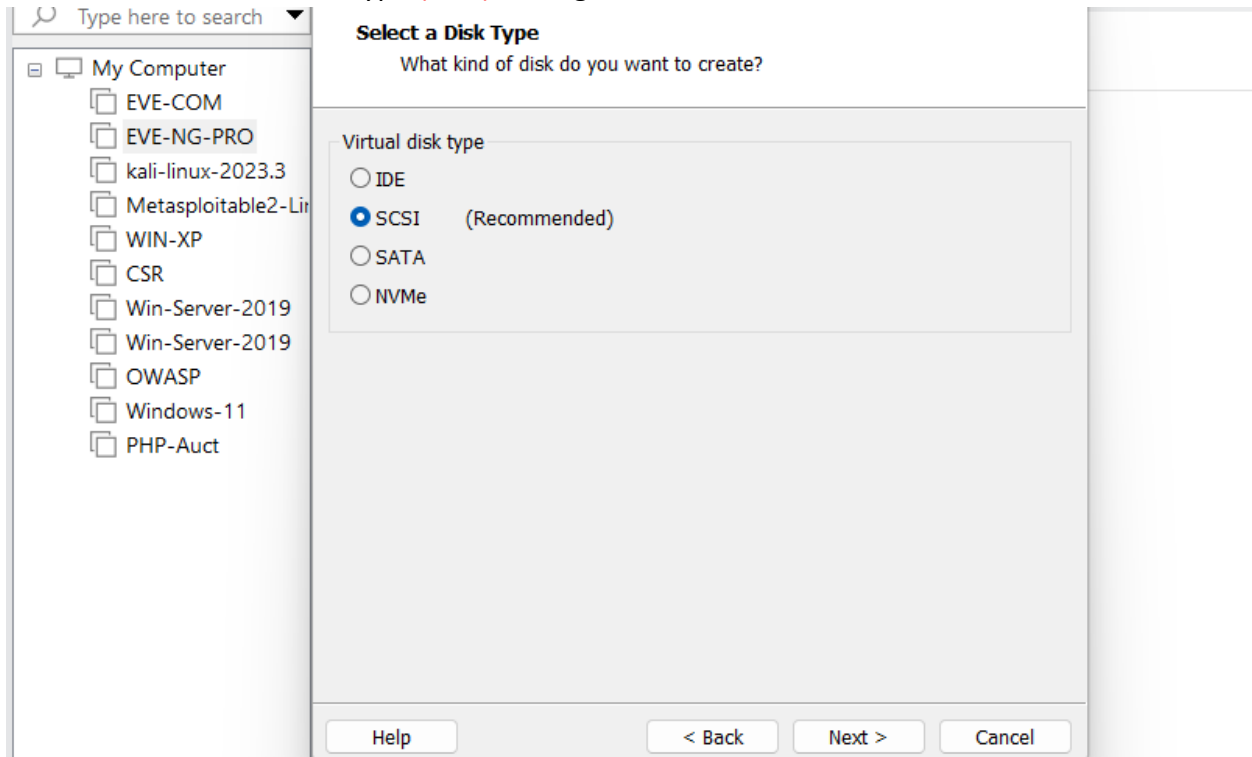
Select then network for your EVE VM. For Laptop it is recommended to use **NAT** Adaptor



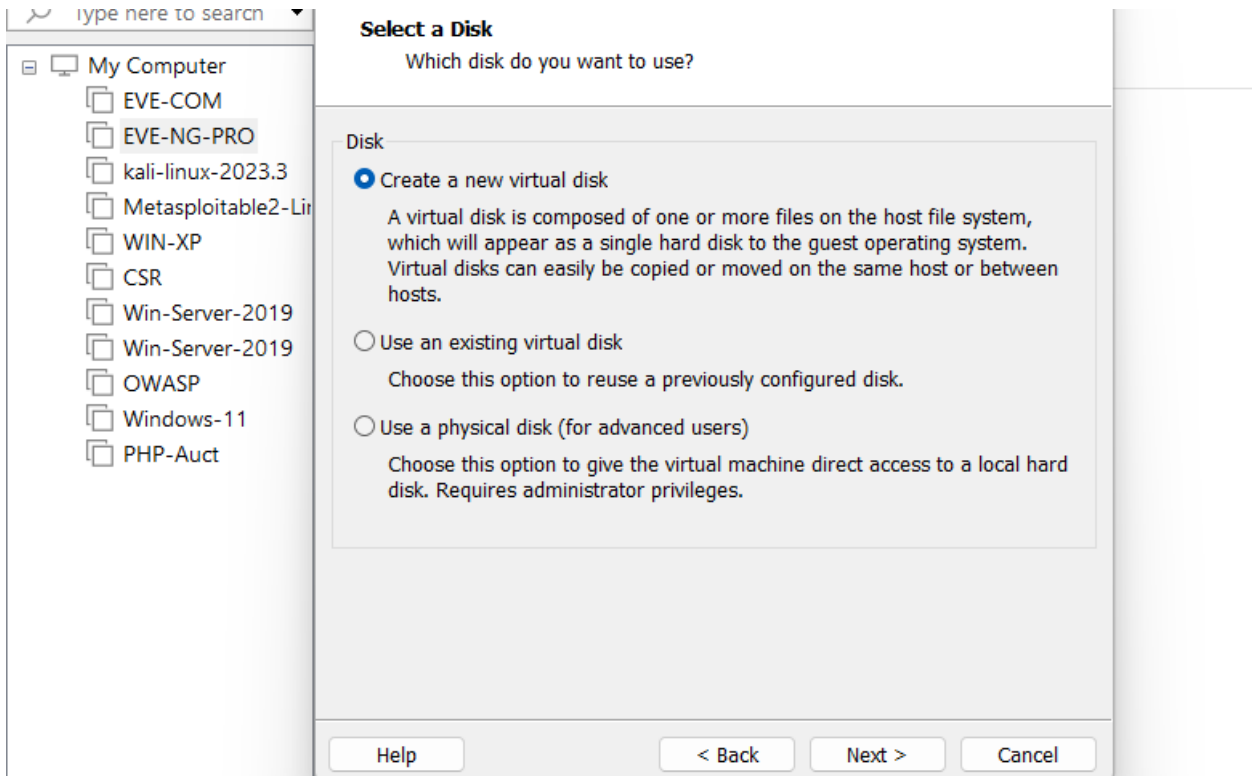
Leave recommended I/O settings, **LSI Logic** and click **Next**.



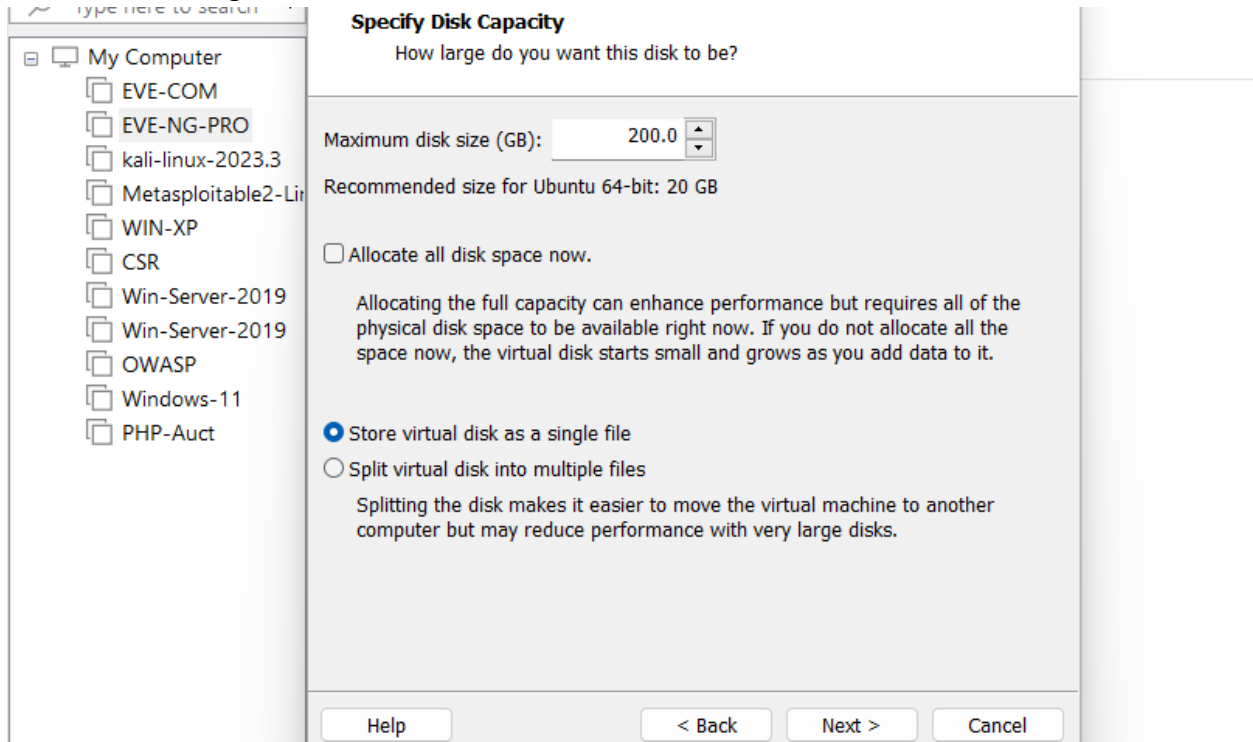
Leave recommended Disk Type (SCSI) settings and click Next.



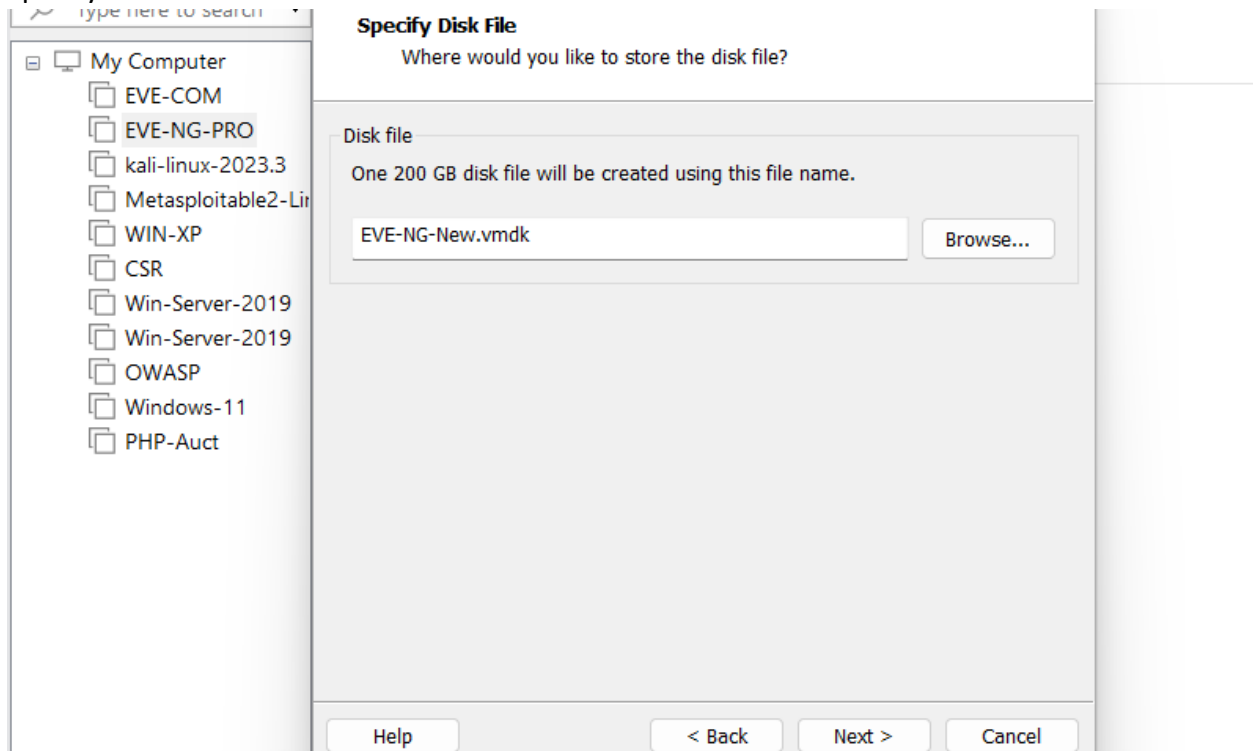
Select Create a new virtual disk and click Next.



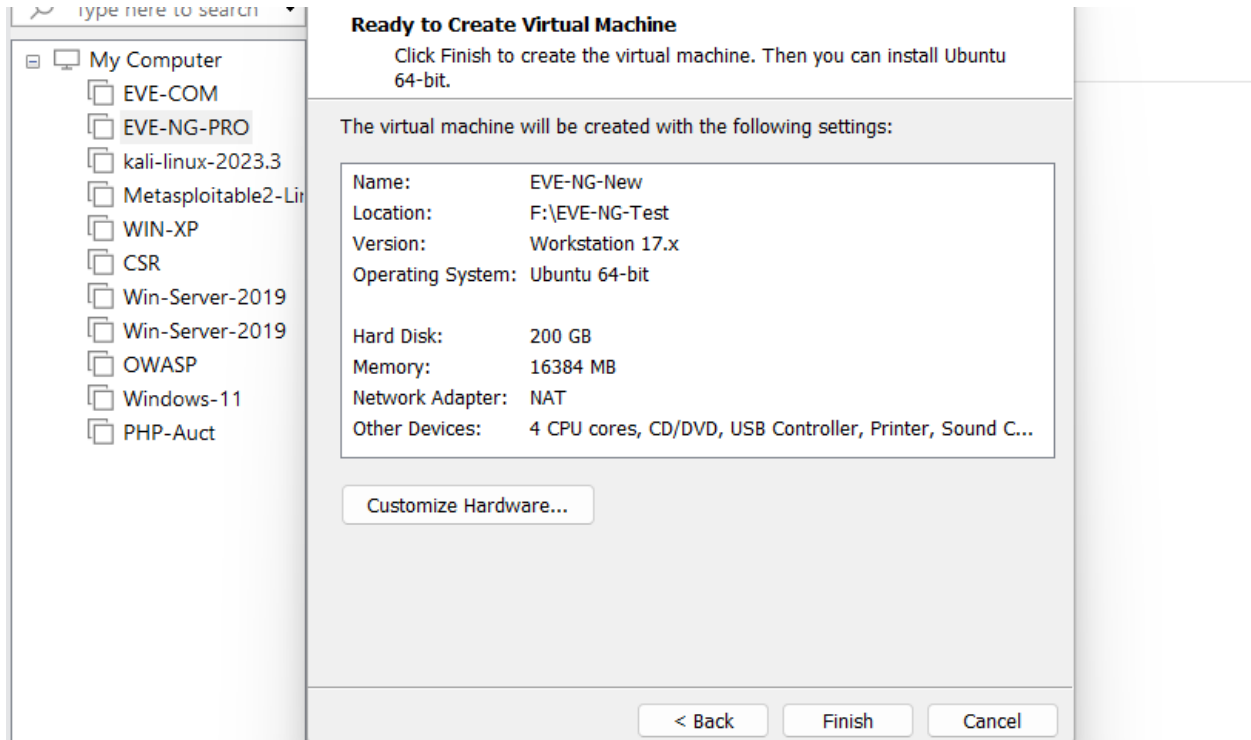
Select your desirable HDD size. It is recommended to set minimum **200GB** or more. Select Store virtual disk as single file and click **Next**.



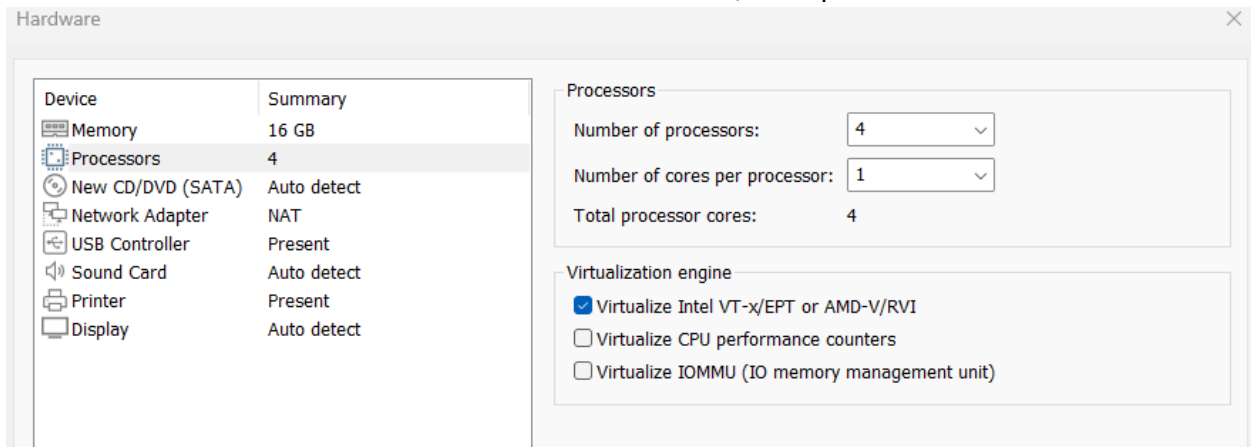
Specify Disk File location click **Next**.



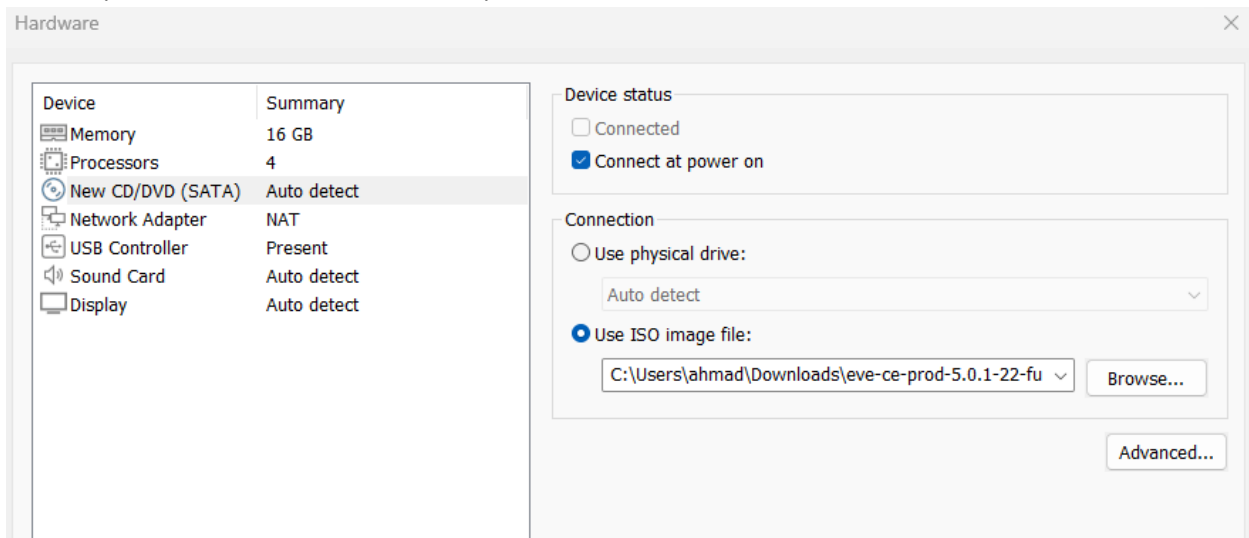
Select **Customize Hardware**



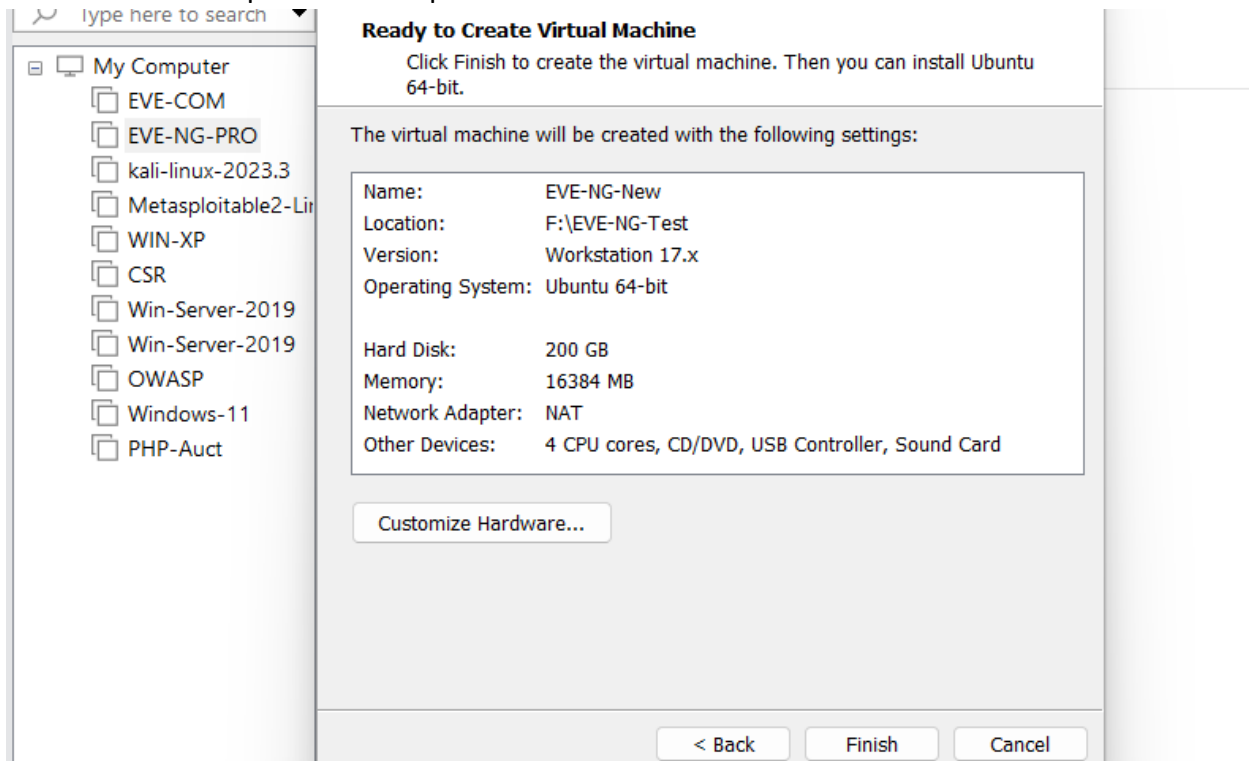
IMPORTANT! Select CPU and Enable **Virtualize Intel VT-x/EPT** option



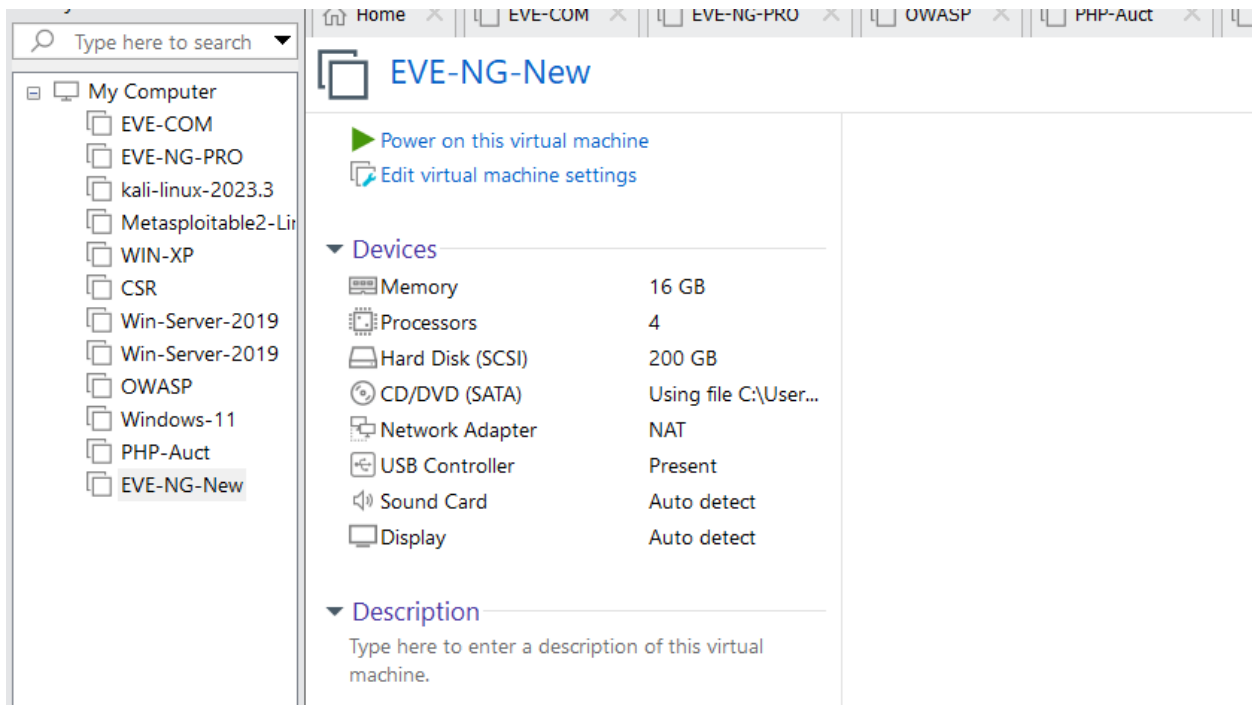
Select **CD/DVD Option**: “use ISO image file.” Browse to your downloaded **eve-ce-prod-5.0.1-22-full.iso** (actual name can be different) file.



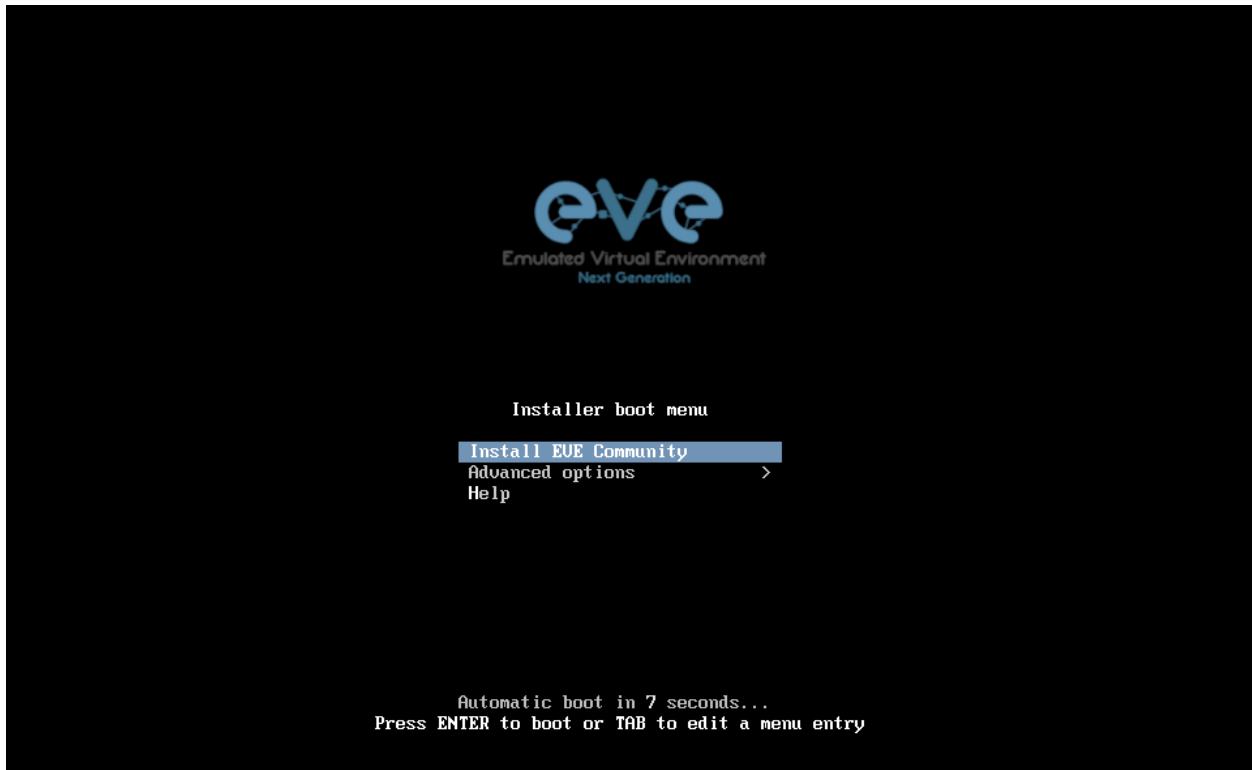
Click **Finish** to complete VM setup



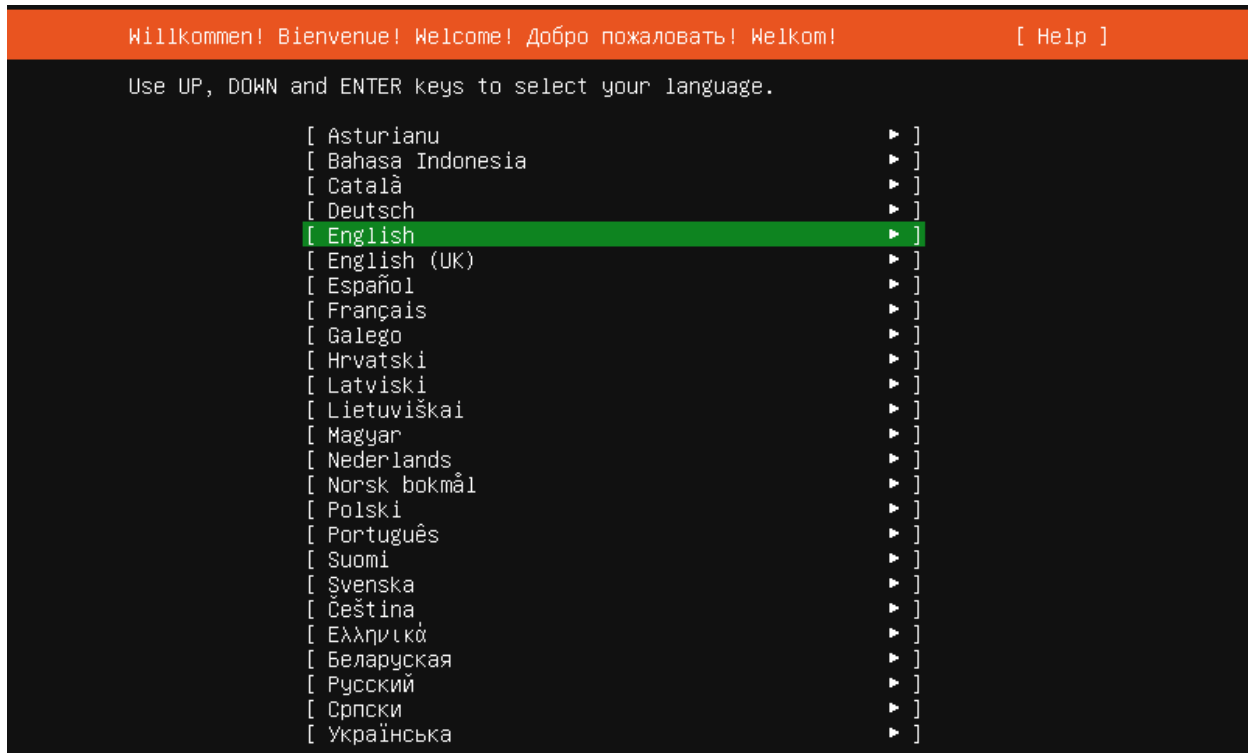
Power ON EVE VM.



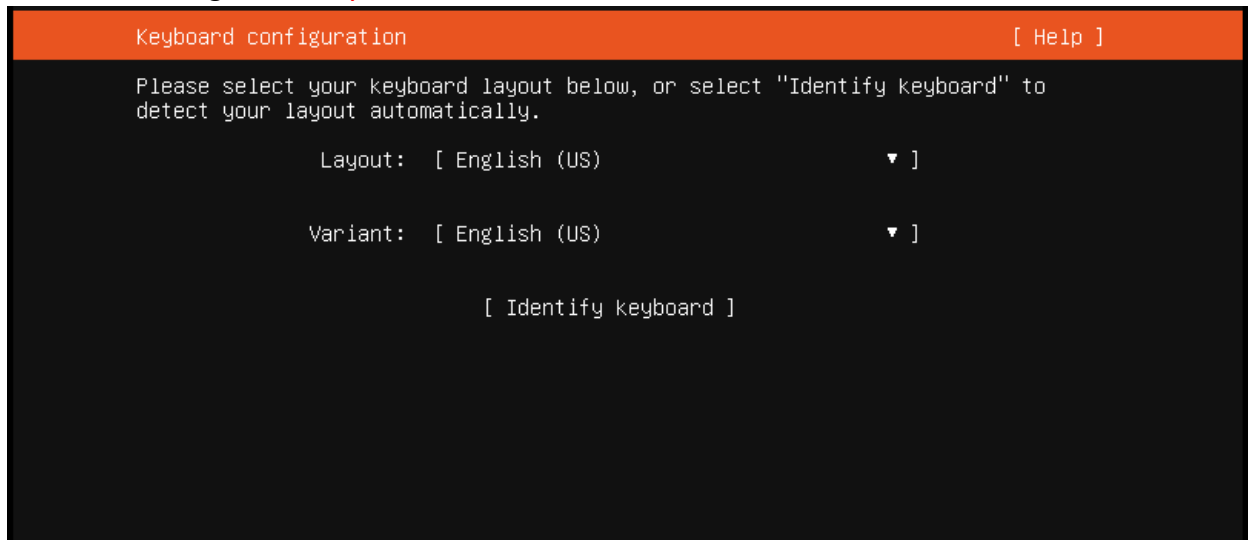
Chose **Install EVE-NG Community** Server and confirm with Enter.



Select **English** language. Confirm with Enter.



Make sure if English **US keyboard** is selected and confirm with Enter



If your DHCP IP settings are correct, select **Done** and confirm with Enter.

```
Network connections [ Help ]

Configure at least one interface this server can use to talk to other machines,
and which preferably provides sufficient access for updates.

NAME    TYPE  NOTES
[ ens33 eth -          ▶ ]
DHCPv4  192.168.114.170/24
00:0c:29:03:1f:ad / Intel Corporation / 82545EM Gigabit Ethernet Controller
(Copper) (PRO/1000 MT Single Port Adapter)

[ Create bond ▶ ]
```

If you have proxy in use for your internet, assign your network proxy settings. If no proxy in use, with Tab key select **Continue** and confirm with Enter.

```
Configure proxy [ Help ]

If this system requires a proxy to connect to the internet, enter its details
here.

Proxy address: 
If you need to use a HTTP proxy to access the outside world,
enter the proxy information here. Otherwise, leave this blank.

The proxy information should be given in the standard form of
"http://[[user] [:pass]@]host[:port]/".
```

Select **“Continue”** and confirm with Enter.

```
Installing system [ Help ]

subiquity/Updates/load_autoinstall_data
subiquity/Late/load_autoinstall_data
subiquity/Shutdown/load_autoinstall_data
subiquity/Early/apply_autoinstall_config
subiquity/Reporting/apply_autoinstall_config
subiquity/Error/apply_autoinstall_config
subiquity/Userdata/apply_autoinstall_config
subiquity/Package/apply_autoinstall_config

Confirm destructive action

Selecting Continue below will begin the installation process and
result in the loss of data on the disks selected to be formatted.

You will not be able to return to this or a previous screen once the
installation has started.

Are you sure you want to continue?

[ No ]
[ Continue ]

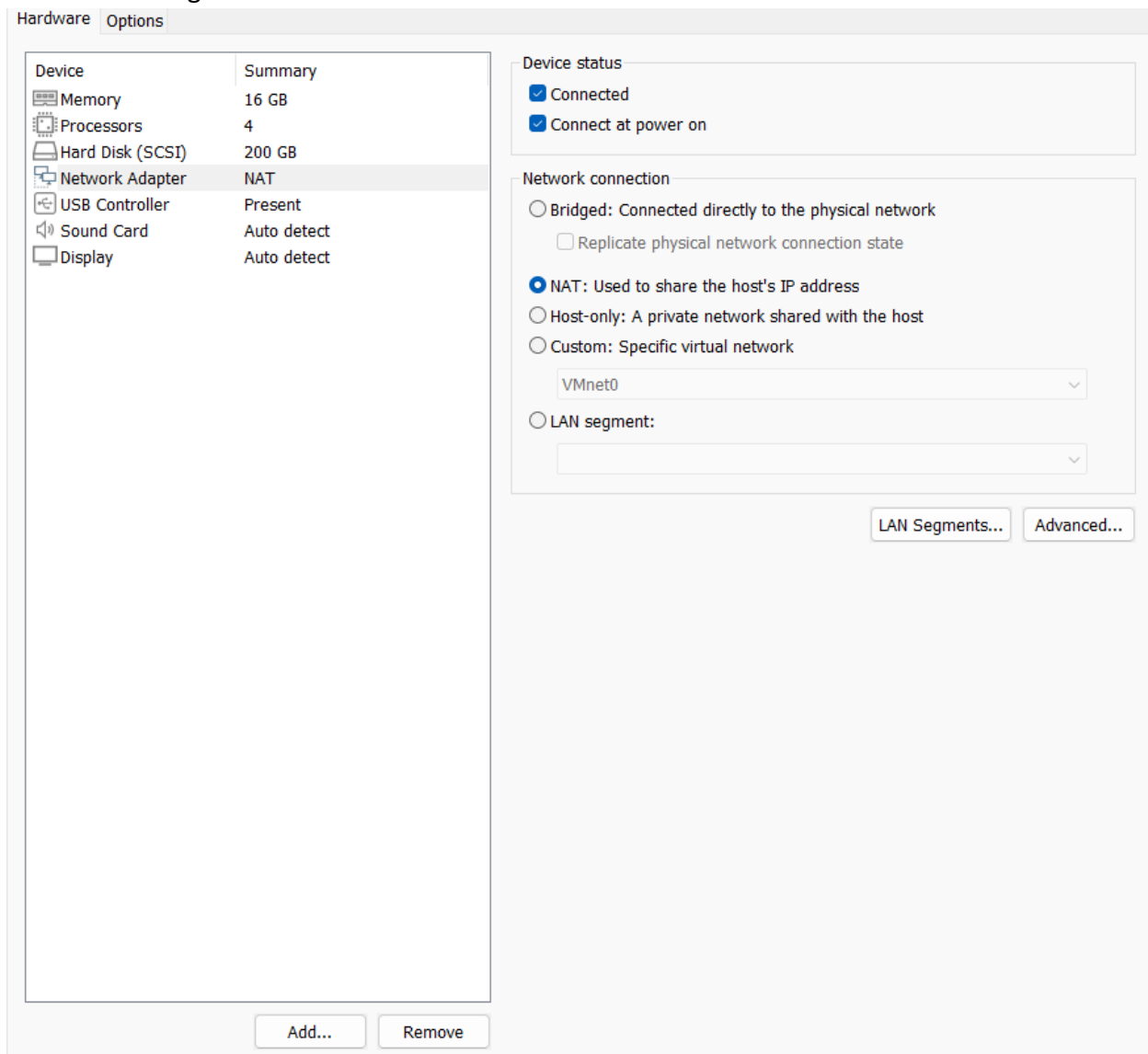
subiquity/SnapList/apply_autoinstall_config
subiquity/Drivers/apply_autoinstall_config
subiquity/TimeZone/apply_autoinstall_config
subiquity/Updates/apply_autoinstall_config
subiquity/Late/apply_autoinstall_config
subiquity/Mirror/cmd-apt-config: curtin command apt-config
```

After the Ubuntu **“Install Complete”** select **“Reboot Now”** and hit Enter to continue.

```
configuring apt configuring apt
installing missing packages
configuring iscsi service
configuring raid (mdadm) service
installing kernel
setting up swap
apply networking config
writing etc/fstab
configuring multipath
updating packages on target system
configuring pollinate user-agent on target
updating initramfs configuration
configuring target system bootloader
installing grub to target devices
finalizing installation
  running 'curtin hook'
  curtin command hook
  executing late commands
final system configuration
  configuring cloud-init
  calculating extra packages to install
  installing openssh-server
  curtin command system-install
  downloading and installing security updates
  curtin command in-target /

[ View full log ]
[ Cancel update and reboot ]
```

Without powering off the EVE VM, open the EVE VM settings and **remove** CD/DVD ISO Device. Save VM Settings.



Return back to EVE console screen and confirm Continue with **Enter**, EVE VM will reboot and continue installation

```
[FAILED] Failed unmounting /cdrom.  
Please remove the installation medium, then press ENTER:  
[FAILED] Failed unmounting /cdrom.  
[FAILED] Failed unmounting /cdrom.  
[FAILED] Failed unmounting /cdrom.  
[FAILED] Failed unmounting /cdrom.
```

Depending on your internet speed EVE installation will take some time. After installation EVE VM will auto reboot and EVE login screen will appear, login in CLI with **root/eve**

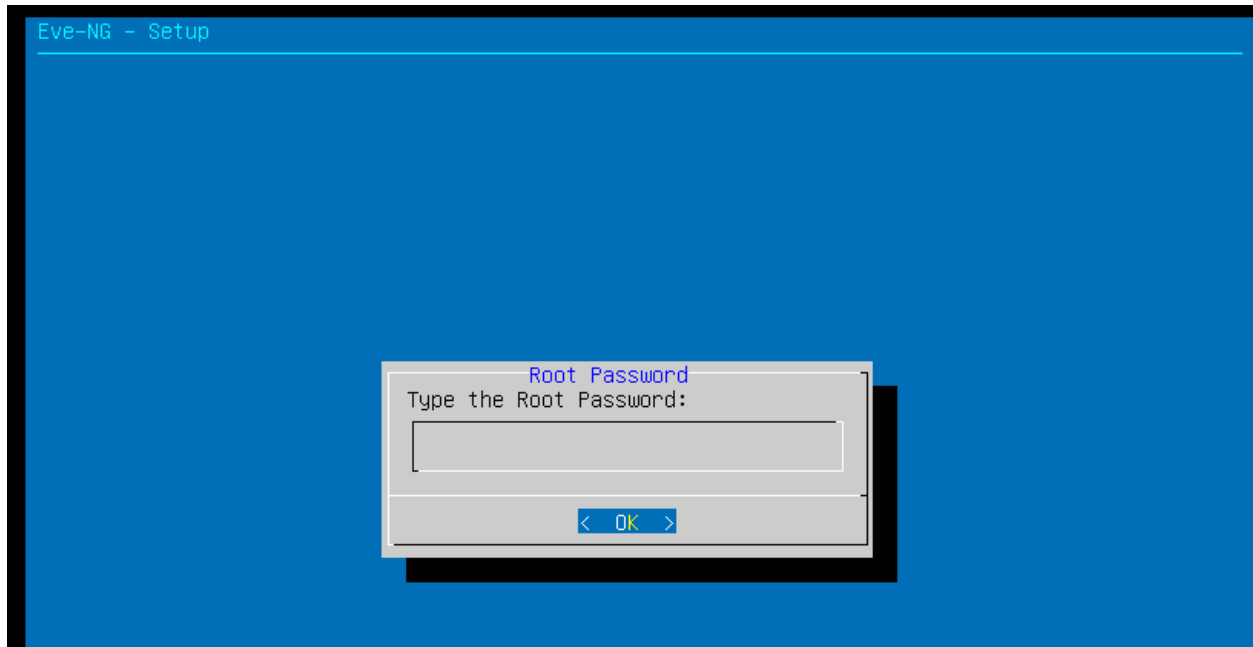
```
[ 38.591054] cloud-init[1675]: Selecting previously unselected package default-jdk.
[ 38.595107] cloud-init[1675]: Preparing to unpack .../171-default-jdk_2%3a1.11-72_amd64.deb ...
[ 38.596658] cloud-init[1675]: Unpacking default-jdk (2:1.11-72) ...
[ 38.610415] cloud-init[1675]: Selecting previously unselected package libeclipse-jdt-core-java.
[ 38.614576] cloud-init[1675]: Preparing to unpack .../172-libeclipse-jdt-core-java_3.18.0+eclipse4.12-1_all.deb ...
[ 38.616372] cloud-init[1675]: Unpacking libeclipse-jdt-core-java (3.18.0+eclipse4.12-1) ...
[ 38.985832] cloud-init[1675]: Selecting previously unselected package libtomcat9-java.
[ 38.989911] cloud-init[1675]: Preparing to unpack .../173-libtomcat9-java_9.0.31-1ubuntu0.4_all.deb ...
[ 38.991505] cloud-init[1675]: Unpacking libtomcat9-java (9.0.31-1ubuntu0.4) ...
[ 39.359655] cloud-init[1675]: Selecting previously unselected package tomcat9-common.
[ 39.363603] cloud-init[1675]: Preparing to unpack .../174-tomcat9-common_9.0.31-1ubuntu0.4_all.deb ...
[ 39.365251] cloud-init[1675]: Unpacking tomcat9-common (9.0.31-1ubuntu0.4) ...
[ 39.388779] cloud-init[1675]: Selecting previously unselected package tomcat9.
[ 39.393089] cloud-init[1675]: Preparing to unpack .../175-tomcat9_9.0.31-1ubuntu0.4_all.deb ...
[ 39.393991] cloud-init[1675]: Unpacking tomcat9 (9.0.31-1ubuntu0.4) ...
[ 39.415077] cloud-init[1675]: Selecting previously unselected package tomcat9-admin.
[ 39.419120] cloud-init[1675]: Preparing to unpack .../176-tomcat9-admin_9.0.31-1ubuntu0.4_all.deb ...
[ 39.421646] cloud-init[1675]: Unpacking tomcat9-admin (9.0.31-1ubuntu0.4) ...
[ 39.439558] cloud-init[1675]: Selecting previously unselected package tomcat9-docs.
[ 39.443507] cloud-init[1675]: Preparing to unpack .../177-tomcat9-docs_9.0.31-1ubuntu0.4_all.deb ...
[ 39.445406] cloud-init[1675]: Unpacking tomcat9-docs (9.0.31-1ubuntu0.4) ...
[ 39.522613] cloud-init[1675]: Setting up mysql-client-core-8.0 (8.0.36-0ubuntu0.20.04.1) ...
[ 39.526207] cloud-init[1675]: Setting up mysql-client-8.0 (8.0.36-0ubuntu0.20.04.1) ...
[ 39.529125] cloud-init[1675]: Setting up libevent-core-2.1-7:amd64 (2.1.11-stable-1) ...
[ 39.531430] cloud-init[1675]: Setting up libevent-pthreads-2.1-7:amd64 (2.1.11-stable-1) ...
[ 39.533574] cloud-init[1675]: Setting up libmecab2:amd64 (0.996-10build1) ...
[ 39.536350] cloud-init[1675]: Setting up mysql-server-core-8.0 (8.0.36-0ubuntu0.20.04.1) ...
[ 39.538577] cloud-init[1675]: Setting up mysql-server-8.0 (8.0.36-0ubuntu0.20.04.1) ...
[ 39.767249] cloud-init[1675]: update-alternatives: using /etc/mysql/mysql.cnf to provide /etc/mysql/my.cnf (my.cnf) in auto mode
[ 39.782413] cloud-init[1675]: Renaming removed key_buffer and myisam-recover options (if present)
```

After your EVE is rebooted, Login to EVE **CLI**

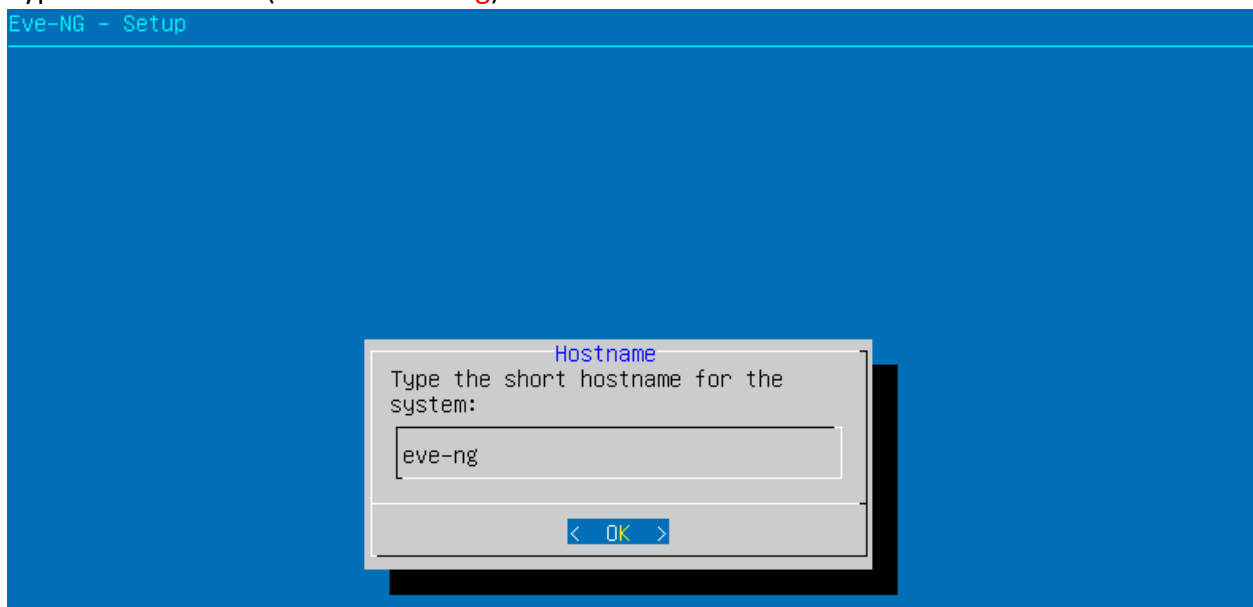
```
Eve-NG (default root password is 'eve')
Use http://192.168.114.170(DHCP4)/

eve-ng login:
```

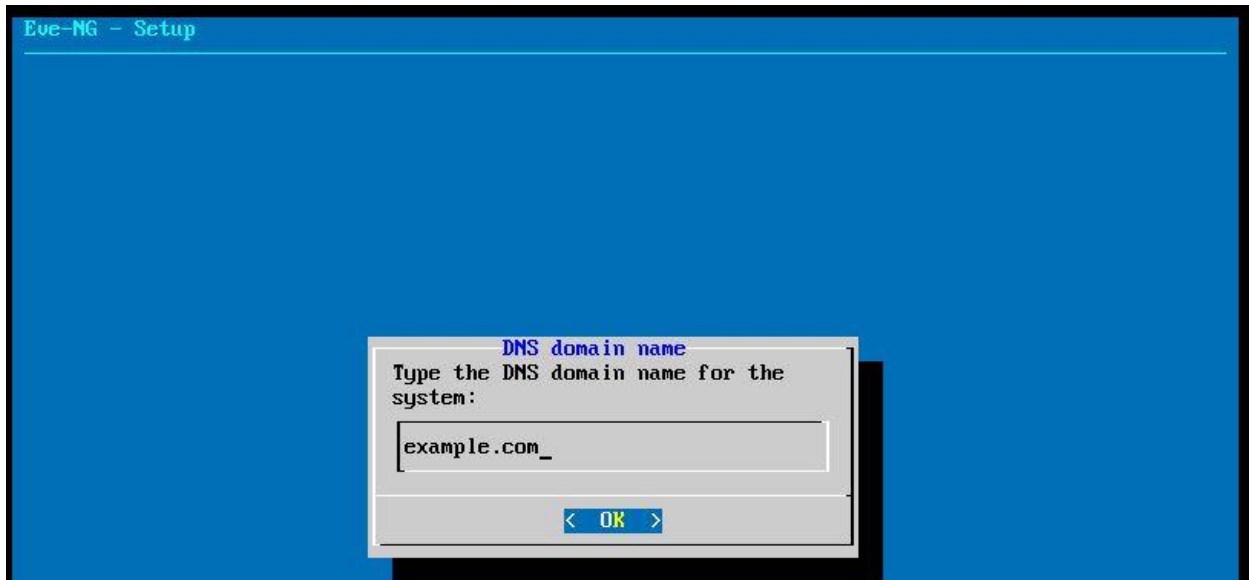
Type in a new password. For convenience, I always retain the default password 'eve'.



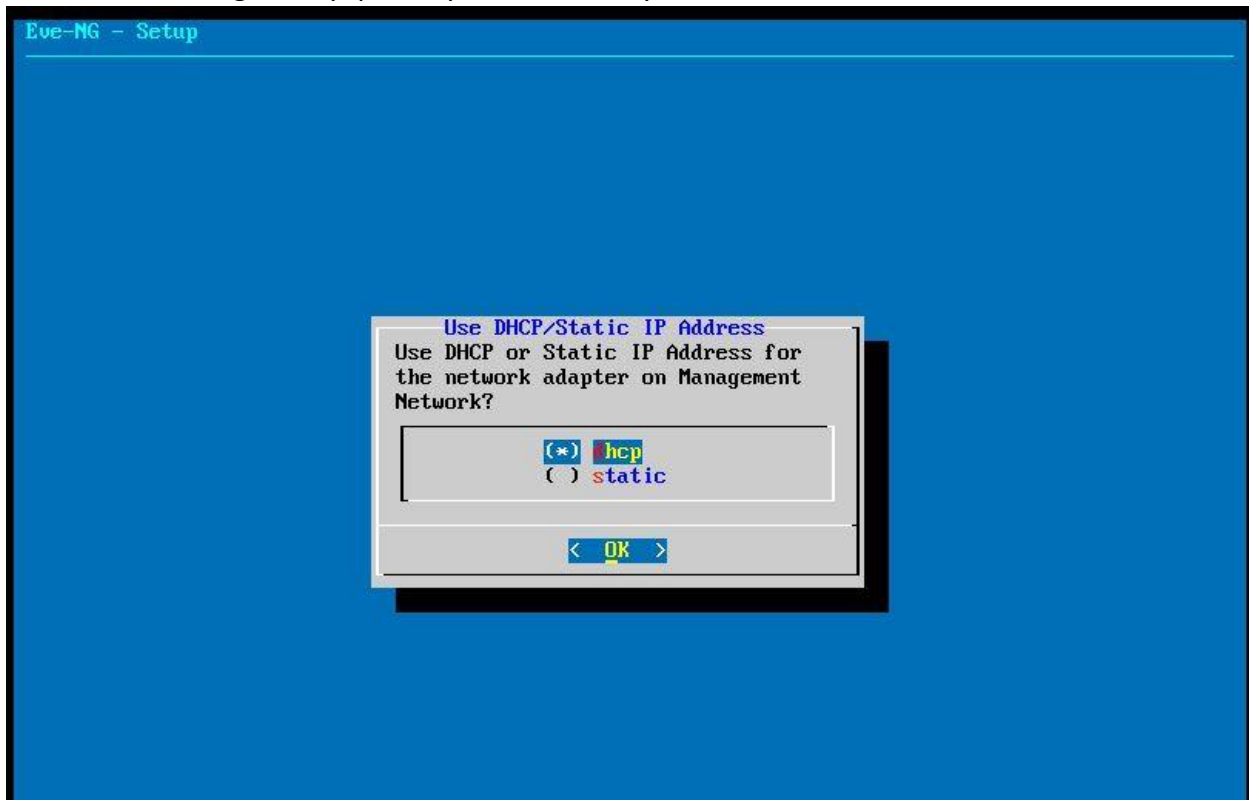
Type the hostname (default is eve-ng). Press enter to select hostname.



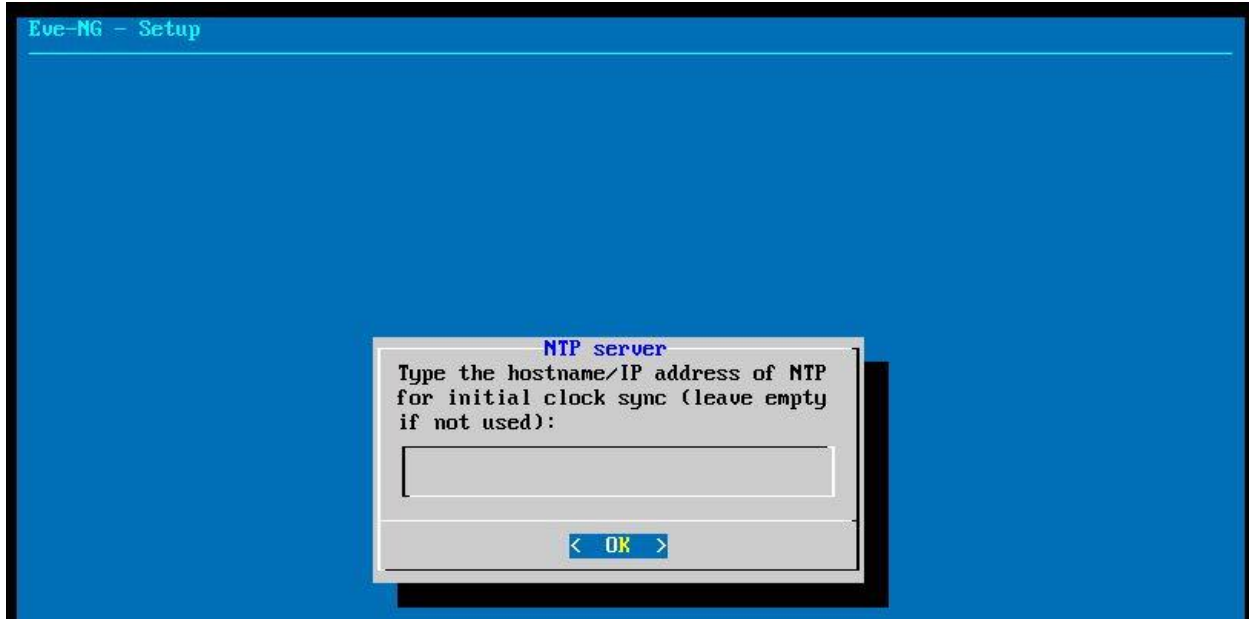
Type the domain name (default is **example.com**):



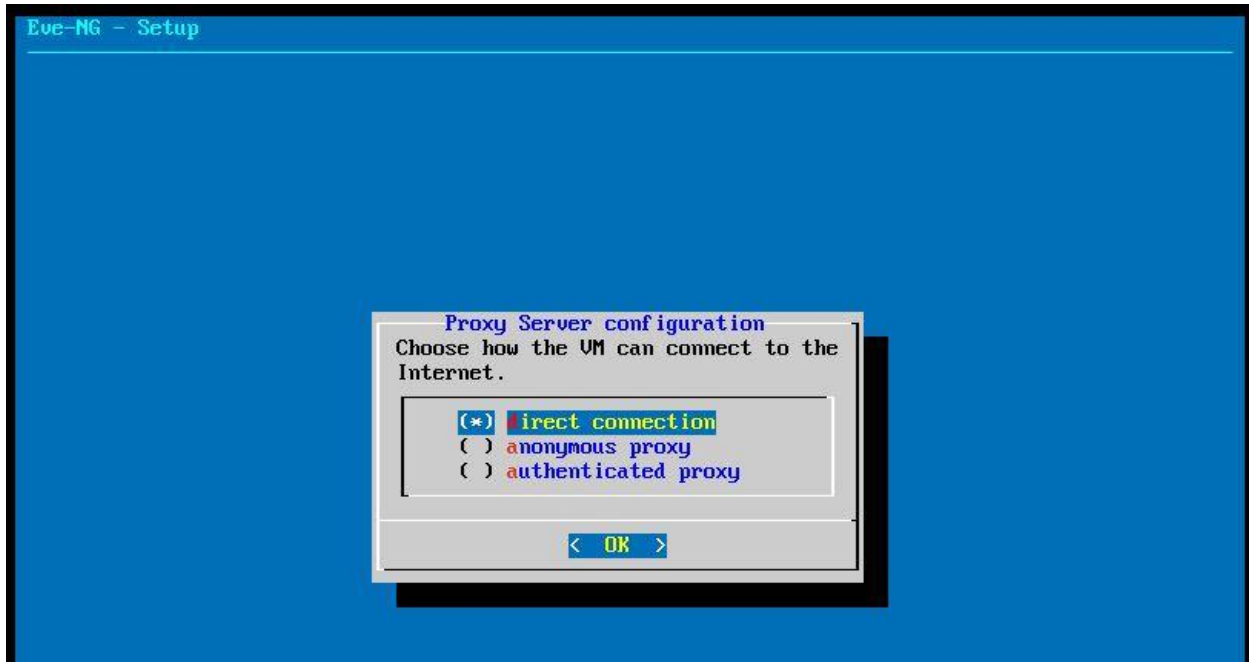
Select if management IP address should be static or configured by **DHCP** (default is DHCP, use arrow keys and space to select, then enter to confirm): Static IP address will ask for IP address, netmask, default gateway, primary and secondary DNS servers.



Type the **NTP server** or leave blank if not used (default is blank):



Configure how the EVE VM can access Internet (default is **direct connection**, use arrow keys and space to select, then enter to confirm):



After the last confirm EVE will reboot. Once you see the login prompt, the system is successfully configured.

EVE-NG is now ready. Open a browser and enter the IP address of the VM in the address bar then click go or press enter. The following page will load. The username is **admin** and password are **eve**. Which is different from CLI Console username.

