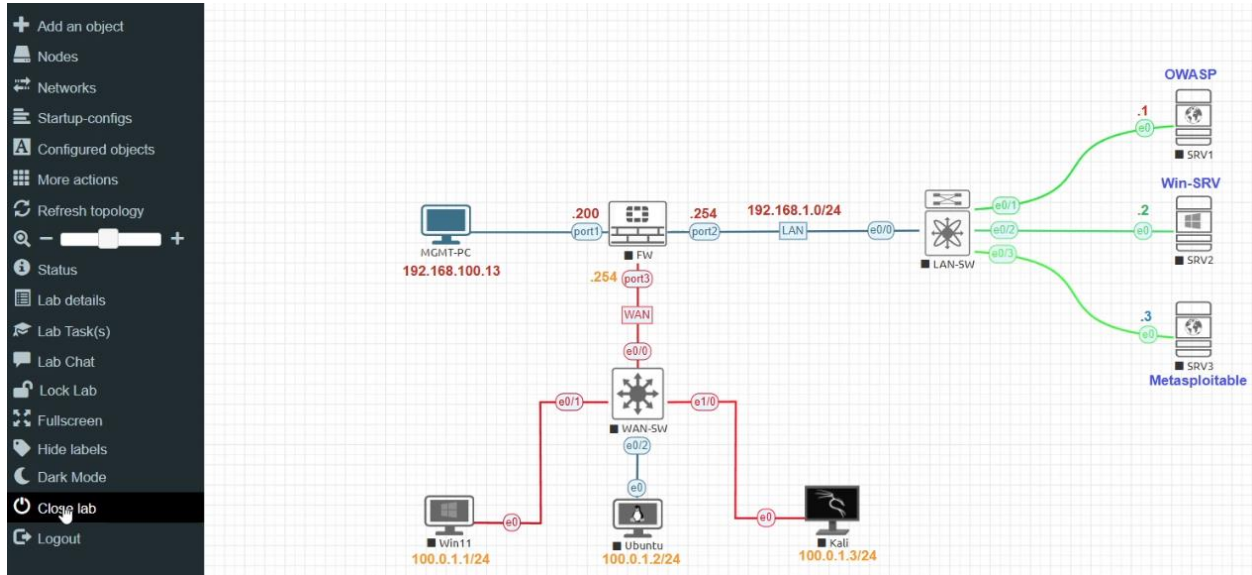


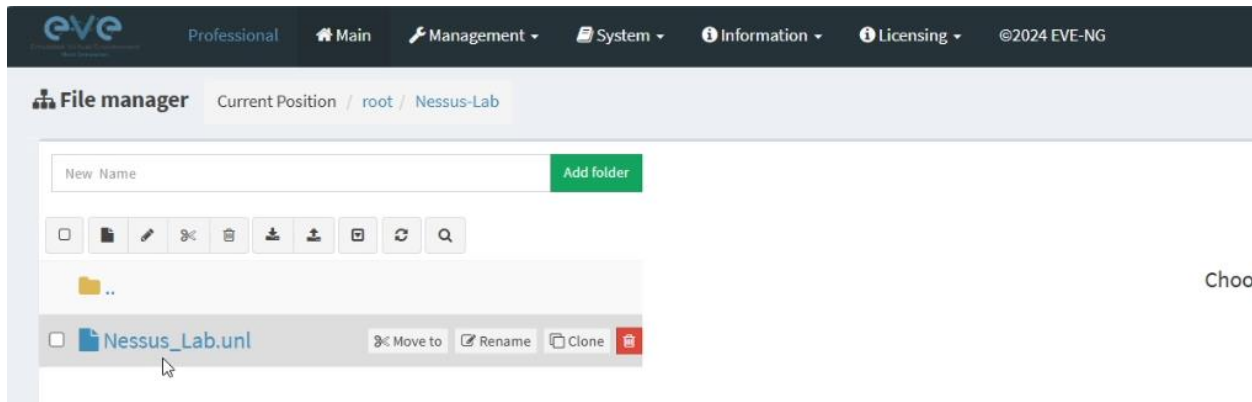
## Export and Import Labs in EVE-NG:

### Exporting EVE-NG Lab File:

You can share your EVE-NG lab files with others, exporting is also made simple as importing EVE-NG lab files. Select the EVE-NG lab you would like to export and then click on export icon as shown below: Upon export it will be save as zip, so that others or you can re-use with import. First close the open lab, navigate to left menu click on **Close lab**.

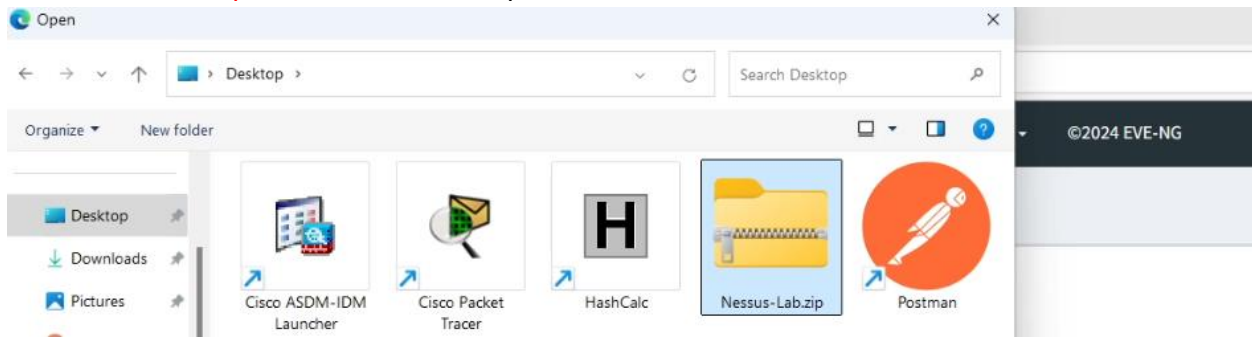


Tick the lab you want to export click on **Export** icon and save the zip lab file in your system.

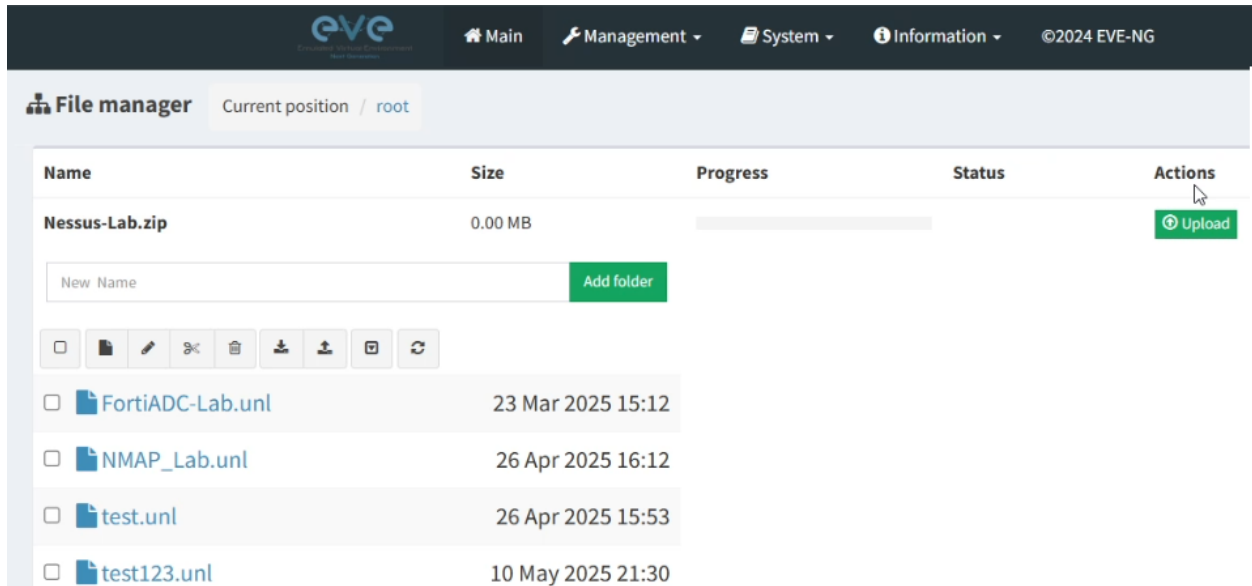




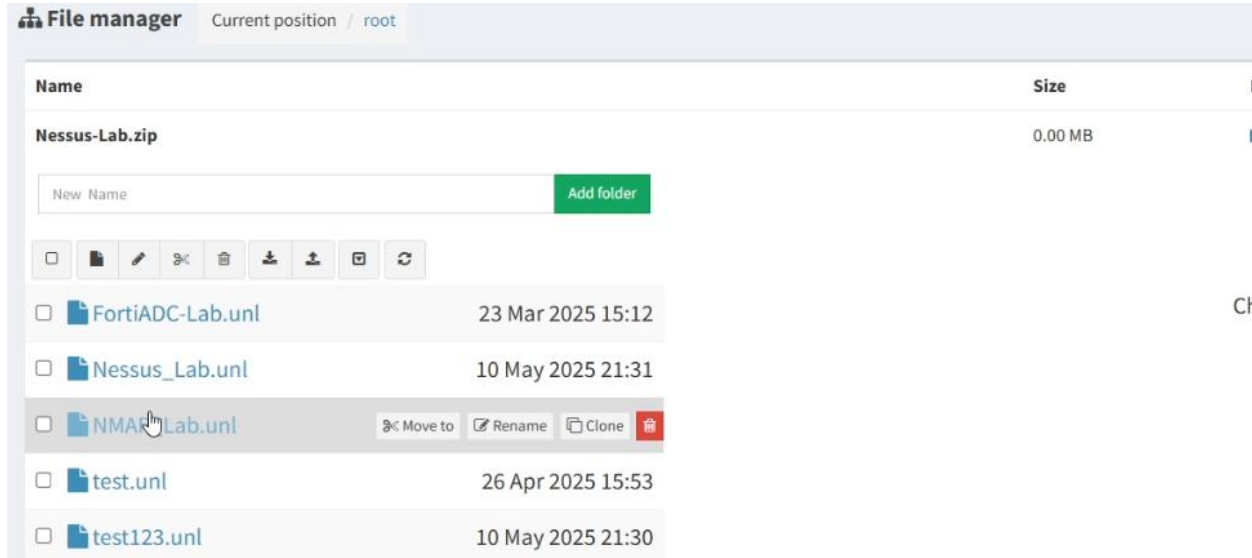
File must be in **.zip format**, do not unzip the file.



Click on the **Upload** Button.

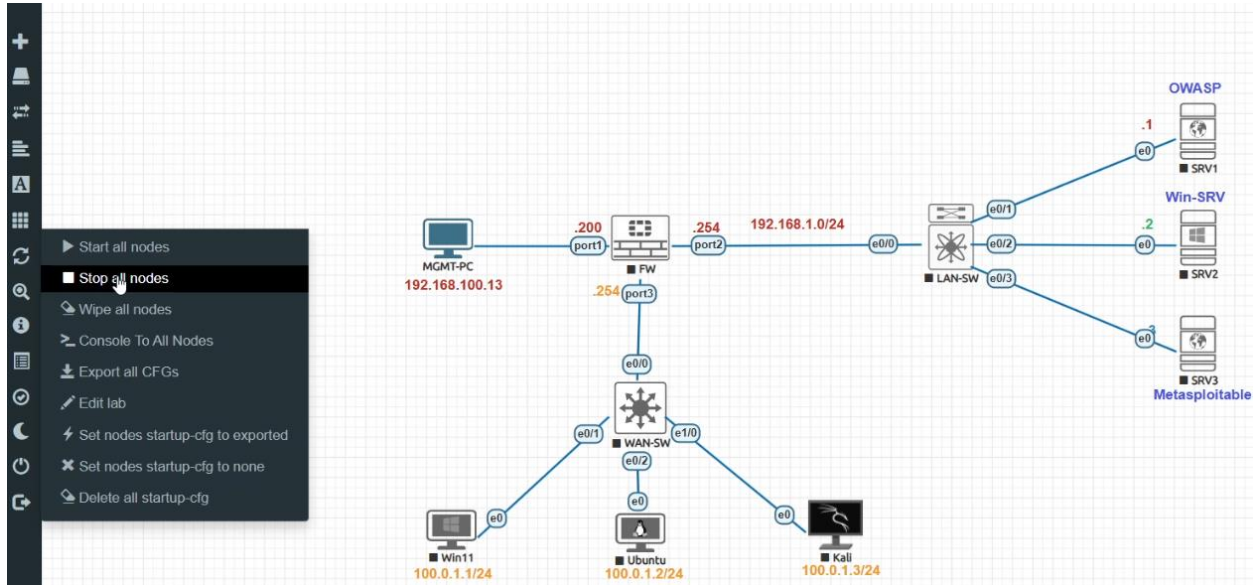


Once your lab is imported, you can close the upload session and click on topology to open.



## Reset the Lab:

Reset devices inside EVE-NG topology. Make sure you first turn off all the devices inside the EVE-NG topology. To turn off, hover your mouse on the sidebar and click on **More Actions > Stop all nodes**.



Wipe all the nodes to bring them back to the base configuration. Hover your mouse on the sidebar and click on **More Actions > Wipe all nodes**.

