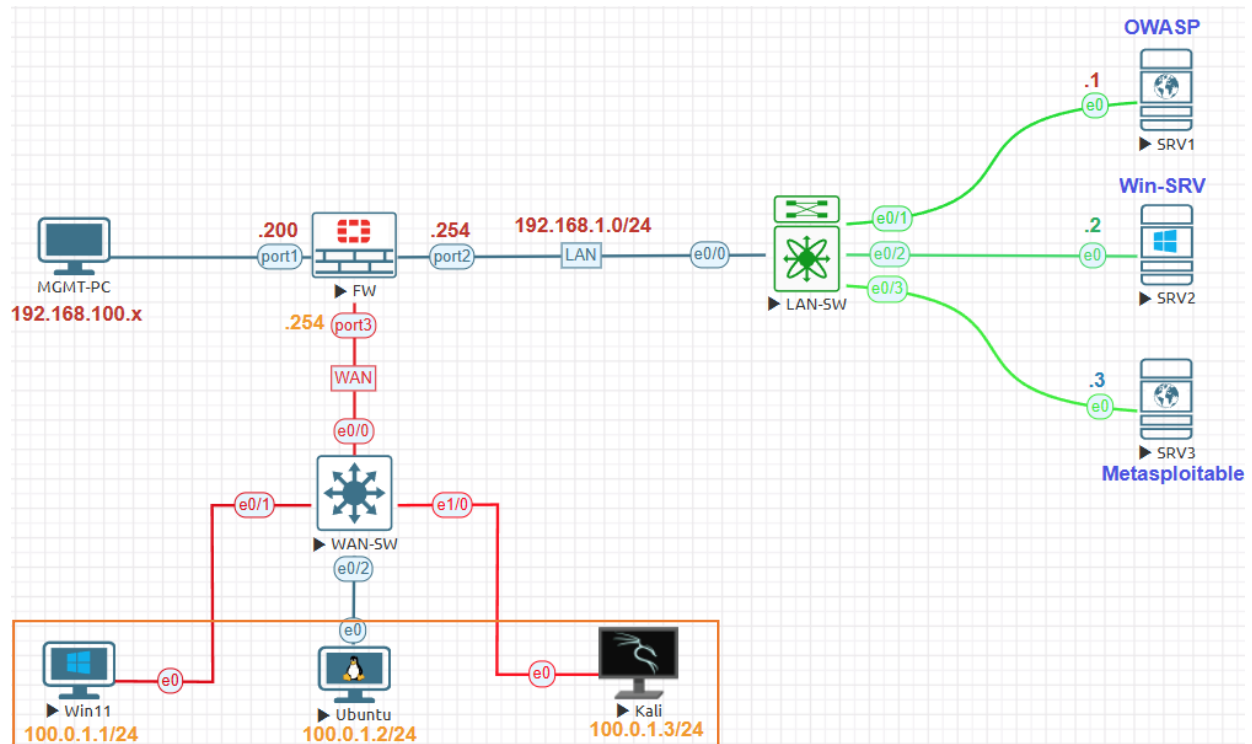


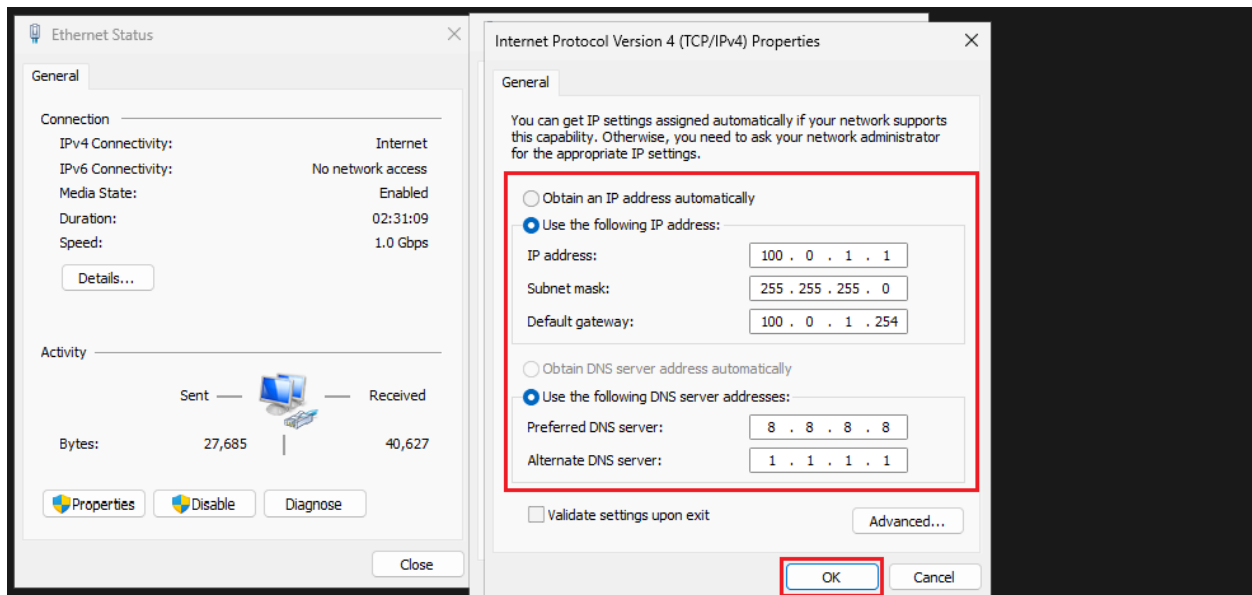
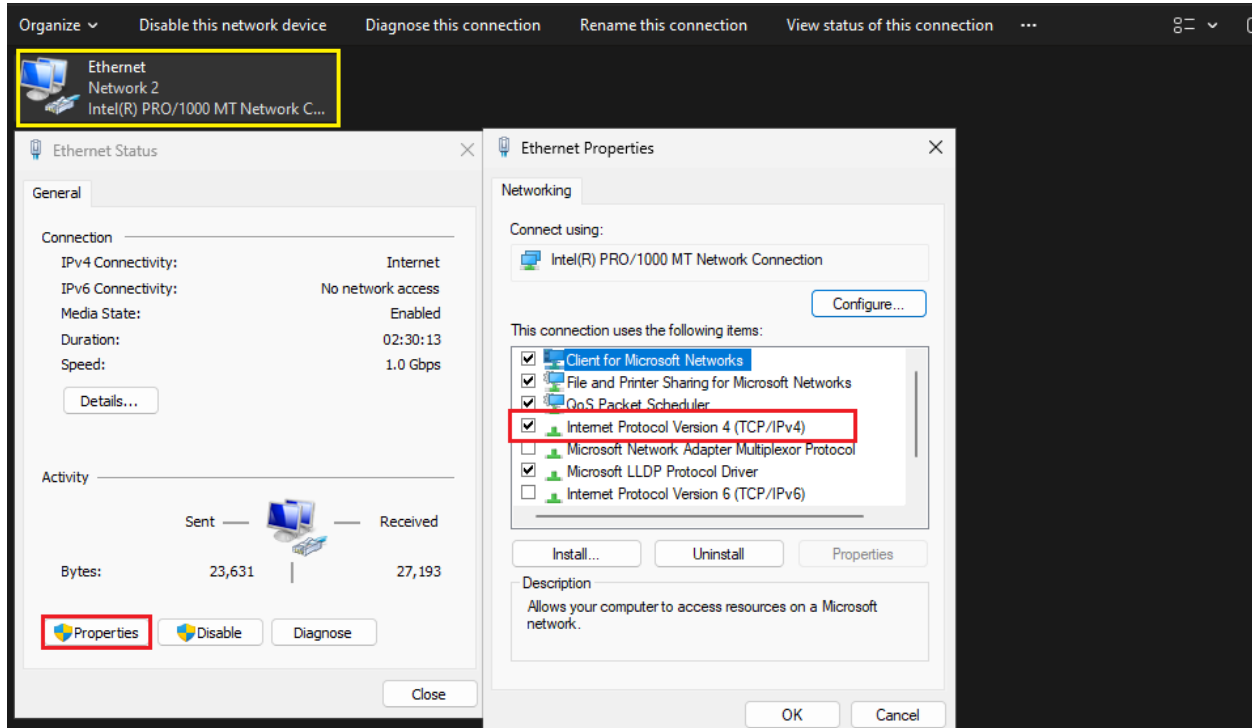
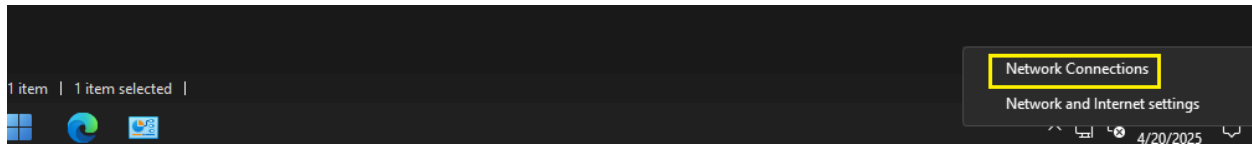
External Devices Configuration Lab:



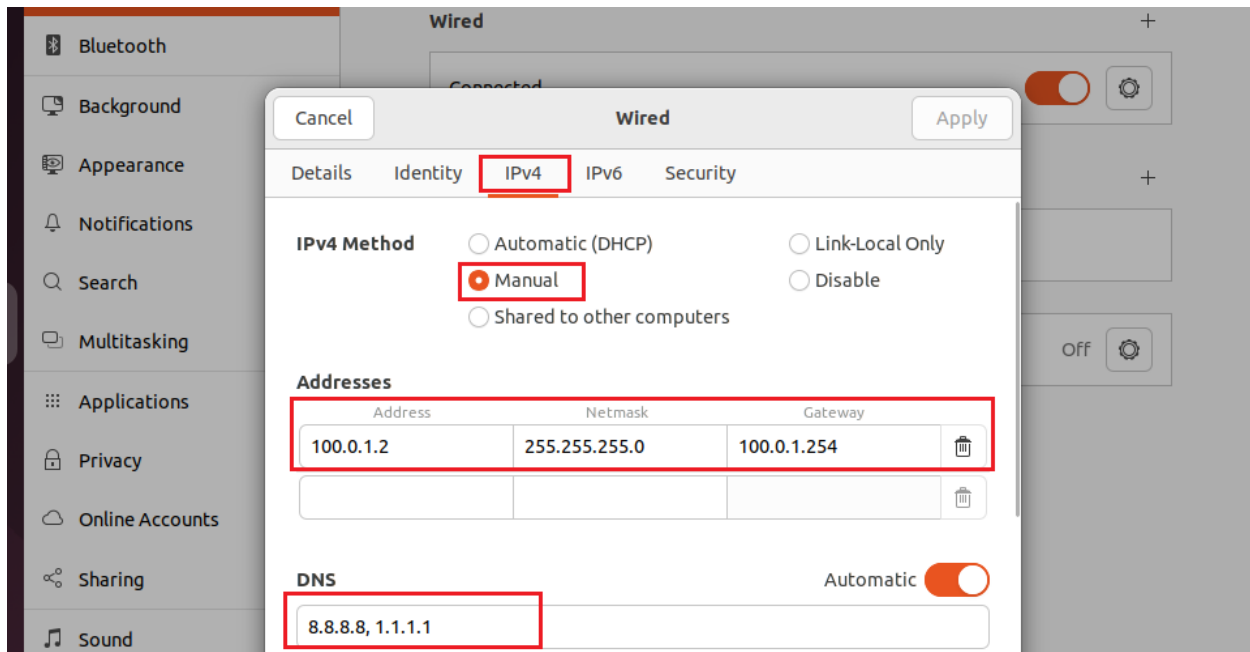
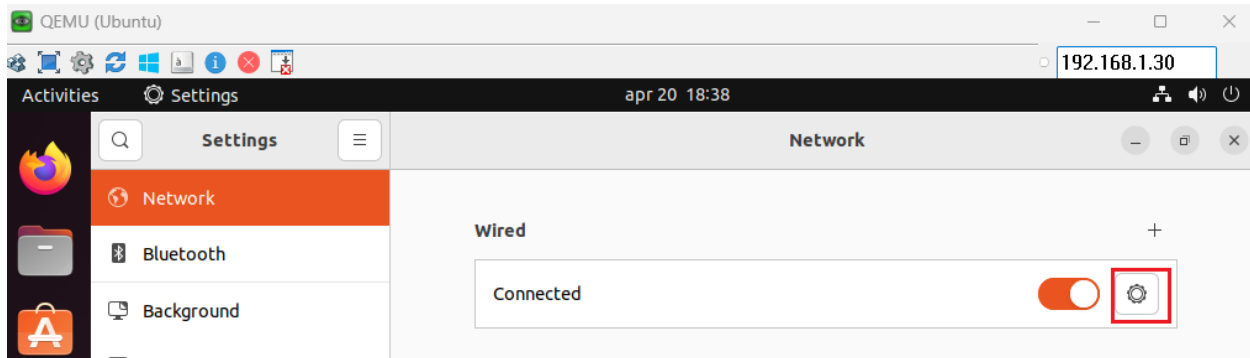
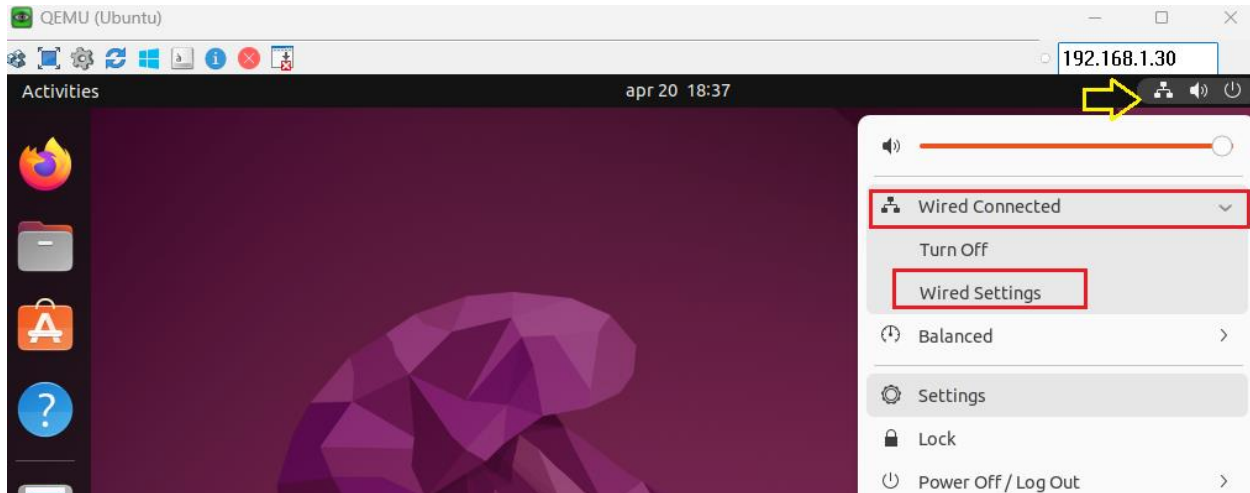
Management Subnet	192.168.100.0/24
FortiGate Management IP	192.168.100.200
Internal Servers Subnet	192.168.1.0/24
FortiGate Firewall External	100.0.1.0/24
FortiGate Firewall Internal IP	192.168.1.254
FortiGate Firewall External IP	100.0.1.254
SRV1 IP Address	192.168.1.1
SRV2 IP Address	192.168.1.2
SRV3 IP Address	192.168.1.3
External Win11 IP Address	100.0.1.1
External Ubuntu IP Address	100.0.1.2
External Kali IP Address	100.0.1.3

Devices	Username	Password
FortiGate 7.0.9	Admin	No password by default
Linux Kali 2025.1c	kali	kali
Linux Ubuntu 22.04 Desktop	user	Test123
Windows 11 x64 SE	user(Administrator)	Test123
Linux Metasploitable 2.0	msfadmin	msfadmin
Linux-OWASP	root	owaspbwa
Windows Server 2012	Administrator	Test123

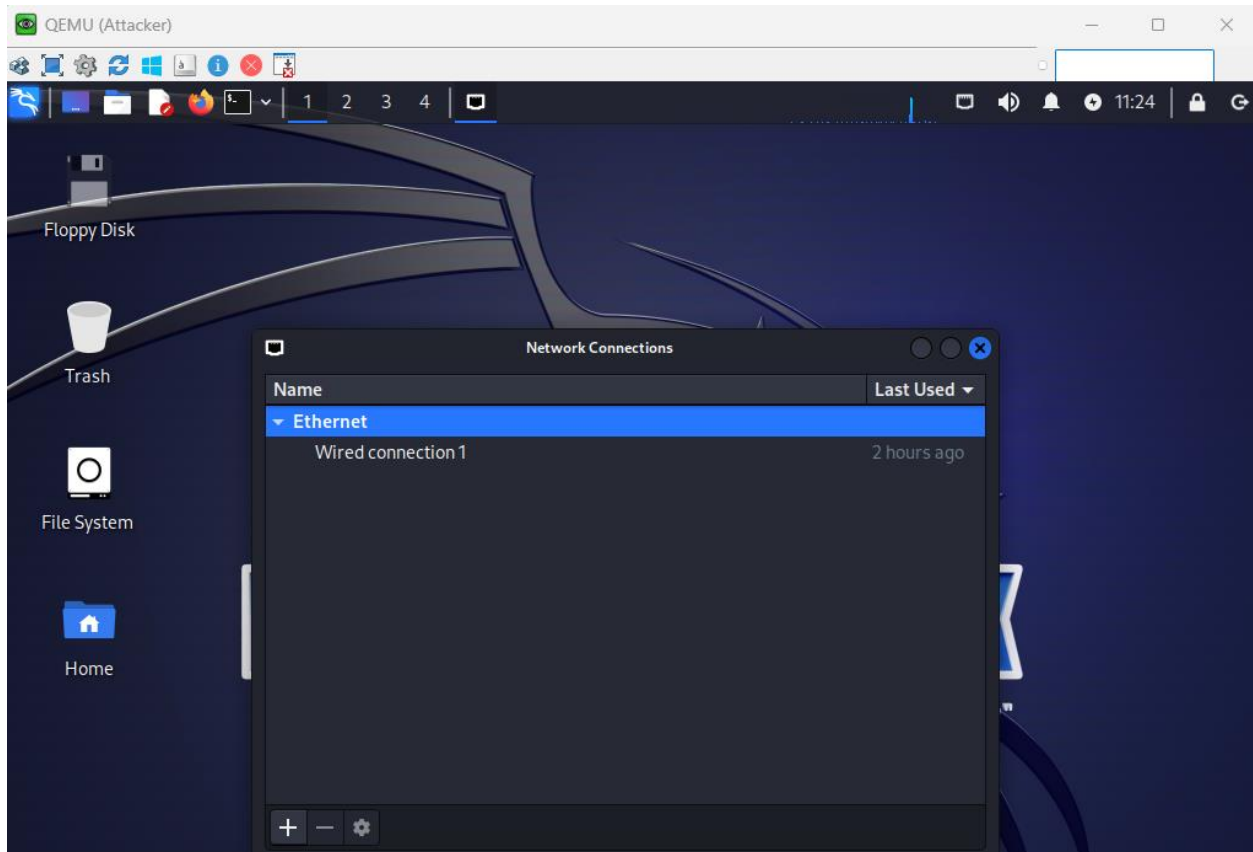
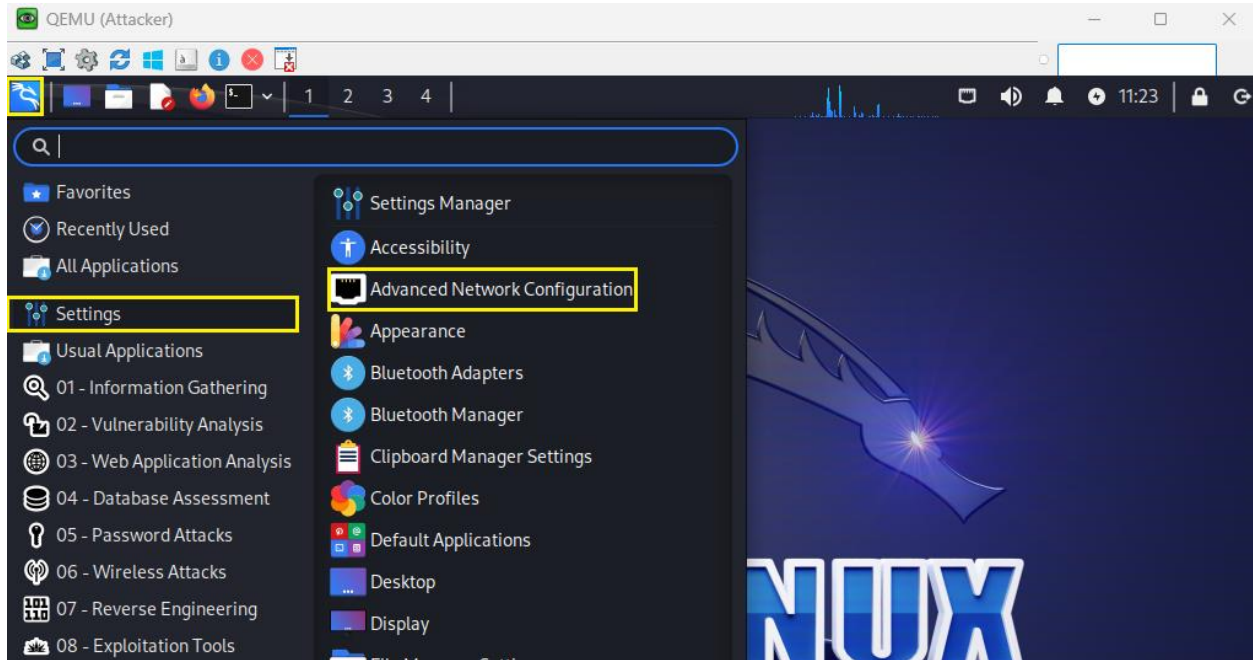
Windows 11:

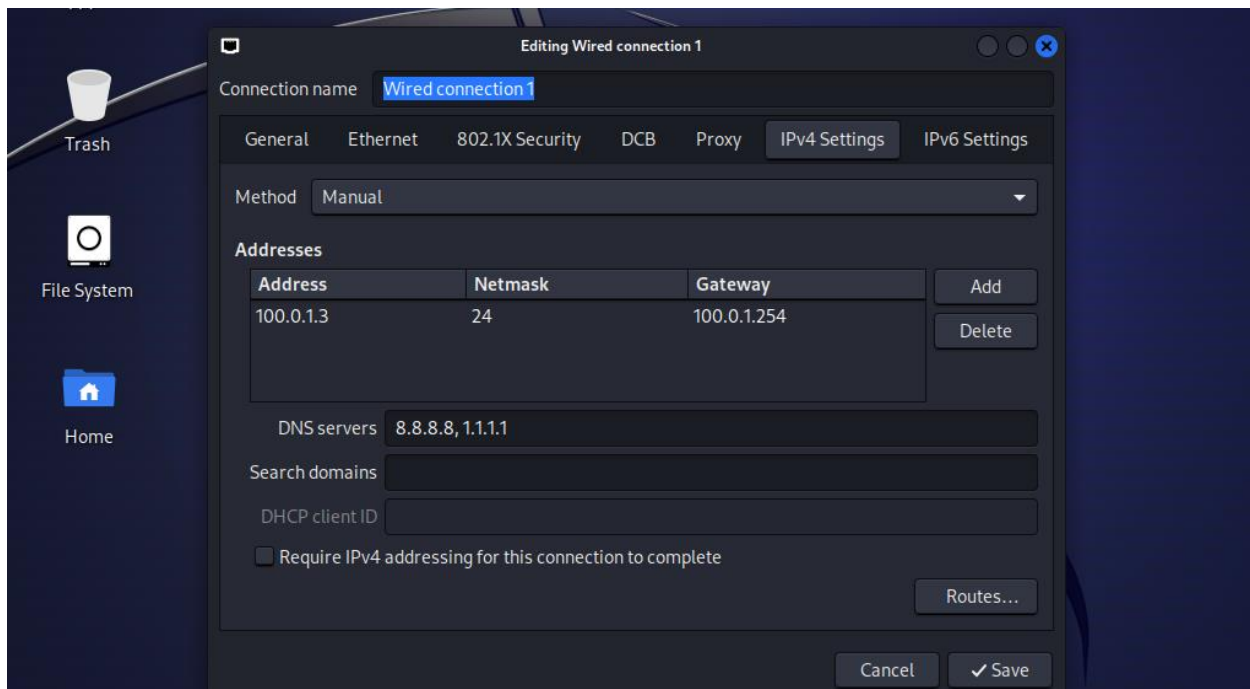


Ubuntu 22:



Kali Linux:





Open Terminal type below command to bring down the interface and bring back to get ip address which we configure manually.

`Sudo ifconfig eth0 down`

Password: kali

`Sudo ifconfig eth0 up`

`Ifconfig eth0`

