



Networkforyou

Subscribe to our
You Tube Channel



Networkforyou



**Welcome
To
Network for you
OSPF Tshoot**



Email us:
networkforyou4@gmail.com

1 of 6

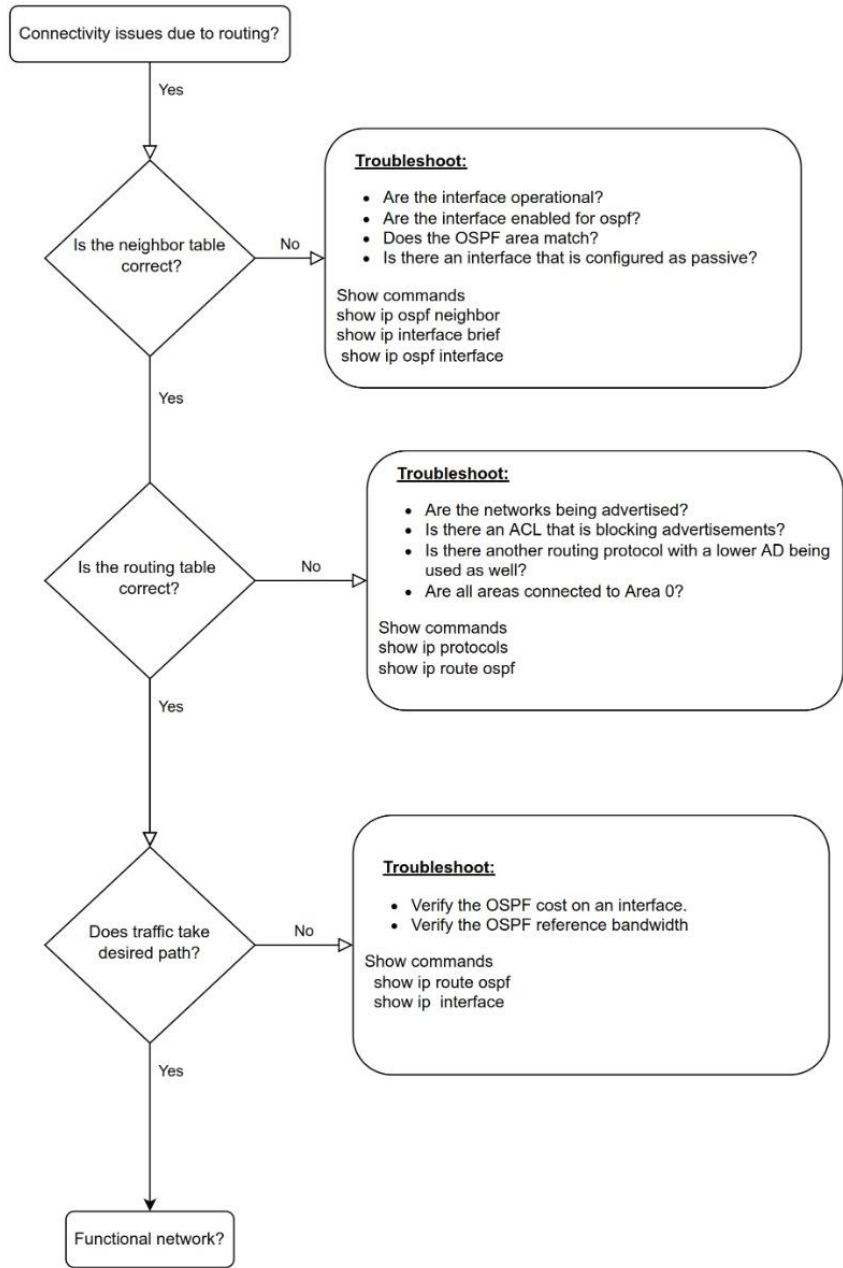
WhatsApp Us : +918143809578



OSPF Troubleshoot Steps:

The following are some of the reasons an OSPF neighbor relationship might not form:

- **Interface is Down** - The interface must be up/up.
- **Interface not Running the OSPF Process** - If the interface is not enabled for OSPF, it does not send hello packets or form adjacencies.
- **Mismatched Timers** - Hello and dead timers must match between neighbors.
- **Mismatched Area Numbers** - The two ends of a link must be in the same OSPF area.
- **Mismatched Area Type** - In addition to a normal OSPF area type, an area type could be a stub area or a not-so-stubby area (NSSA). The routers must agree on the type of area they are in.
- **Different Subnets** - Neighbors must be in the same subnet.
- **Passive Interface** - The passive interface feature suppresses the sending and receiving of hello packets while still allowing the interface's network to be advertised.
- **Mismatched authentication information** - Both OSPF interfaces must be configured for matching authentication.
- **ACLs** - An ACL may be denying packets to the OSPF multicast address 224.0.0.5.
- **MTU Mismatch** - The maximum transmission unit of neighboring interfaces must match.
- **Duplicate Router IDs** - Router IDs must be unique.
- **Mismatched Network Types** - neighbors configured with a different OSPF network type might not form an adjacency.



ryou



OSPF T-Shoot Commands:

OSPF T-shoot Commands:	Description:
Show ip protocols	We will get the following information. Route Filters, RID, Area, Routing Process, passive interface, AD, Load Balancing, Routing Info etc.
Show ip interface brief	Display All interfaces in brief
show ip route	Display all route details
show cdp neighbors	Display directly connected neighbor details
Show ip ospf	OSPF parameters, PID, RID, bandwidth, areas, and area authentication etc.
Show ip ospf interface brief	Display interfaces that are participating in OSPF
Show ip ospf interface	OSPF process, IPv4 address and mask, area ID, PID, RID, network type, cost, DR/BDR, priority, and timers etc.
Show ip ospf neighbor	Neighbor adjacency
Show ip route ospf	Display the OSPF routes
Show ip ospf database	Display the OSPF link-state database
Show ip ospf virtual-links	Status of OSPF virtual links
show access-list	Display Access list block and allowed
Debug ip ospf hello	OSPF hello, OSPF timers and OSPF area types
Debug ip ospf packet	OSPF packets in real time
Debug ip ospf adj	Formation of an OSPF adjacency.
Debug ip ospf events	OSPF events, LSAs etc.

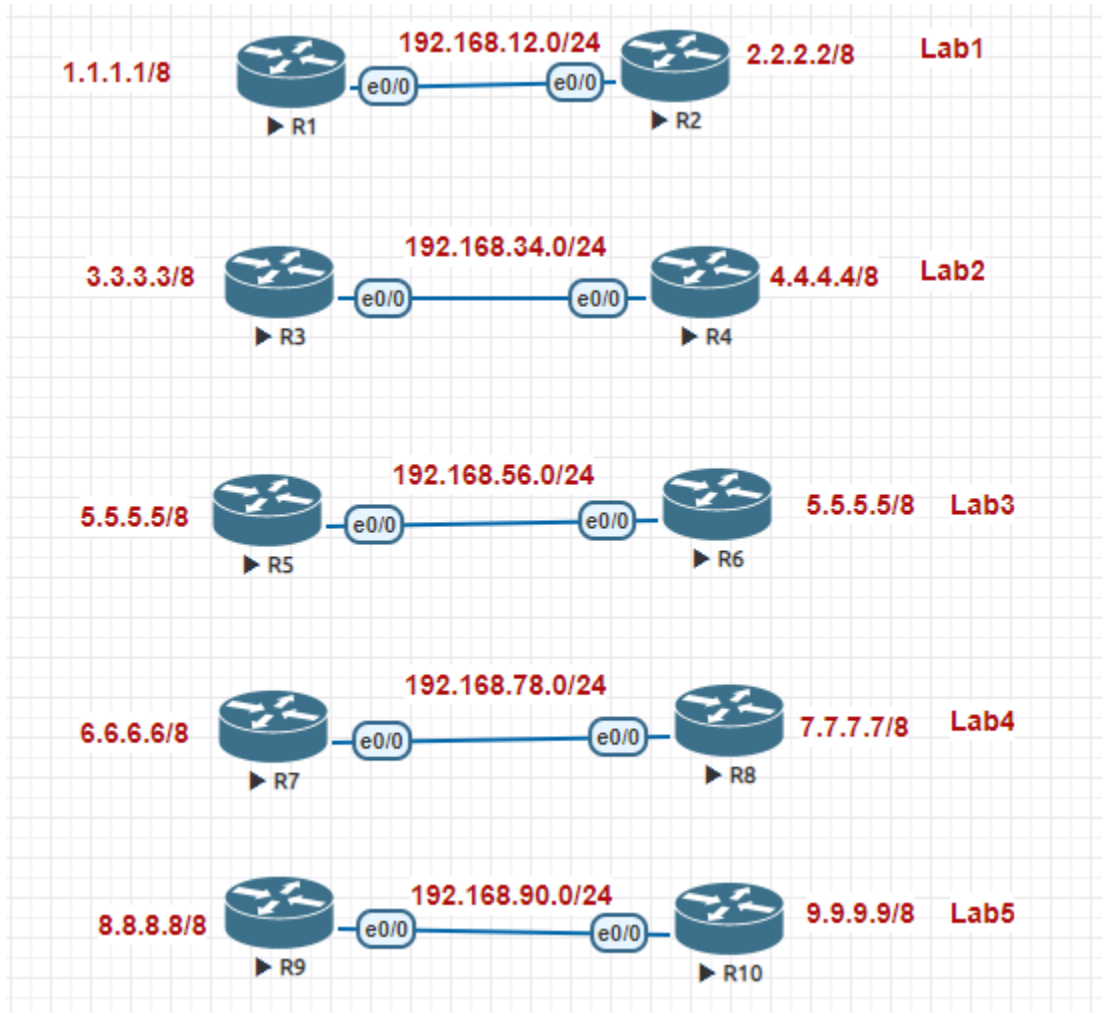
Email us:
networkforyou4@gmail.com

4 of 6

WhatsApp Us : +918143809578



OSPF T-shoot Lab:



ou

Open Shortest Path First (OSPF) Possible issues mentioned Below:

- Open Shortest Path First (OSPF) Network Command Issue.
- Open Shortest Path First (OSPF) Interface Issue.
- Open Shortest Path First (OSPF) Distribute-List and Access List.
- Open Shortest Path First (OSPF) Stub Area Issue.
- Open Shortest Path First (OSPF) Network Type Issue.
- Open Shortest Path First (OSPF) Redistribute Subnets Issue.
- Open Shortest Path First (OSPF) Summarization Issue.
- Open Shortest Path First (OSPF) Passive Interface Issue.

Email us:
networkforyou4@gmail.com

5 of 6

WhatsApp Us : +918143809578



Networkforyou

Subscribe to our
You Tube Channel

- Open Shortest Path First (OSPF) Multicast Filtering Issue.
- Open Shortest Path First (OSPF) Subnet Mask Issue.
- Open Shortest Path First (OSPF) Hello and Dead Interval Issue.
- Open Shortest Path First (OSPF) Authentication Issue.
- Open Shortest Path First (OSPF) Area Mismatch Issue.
- Open Shortest Path First (OSPF) Area Type Mismatch issue.
- Open Shortest Path First (OSPF) DR/BDR Election Issue.
- Open Shortest Path First (OSPF) Network Type Issue.

Networkforyou

Email us:
networkforyou4@gmail.com

6 of 6

WhatsApp Us : +918143809578