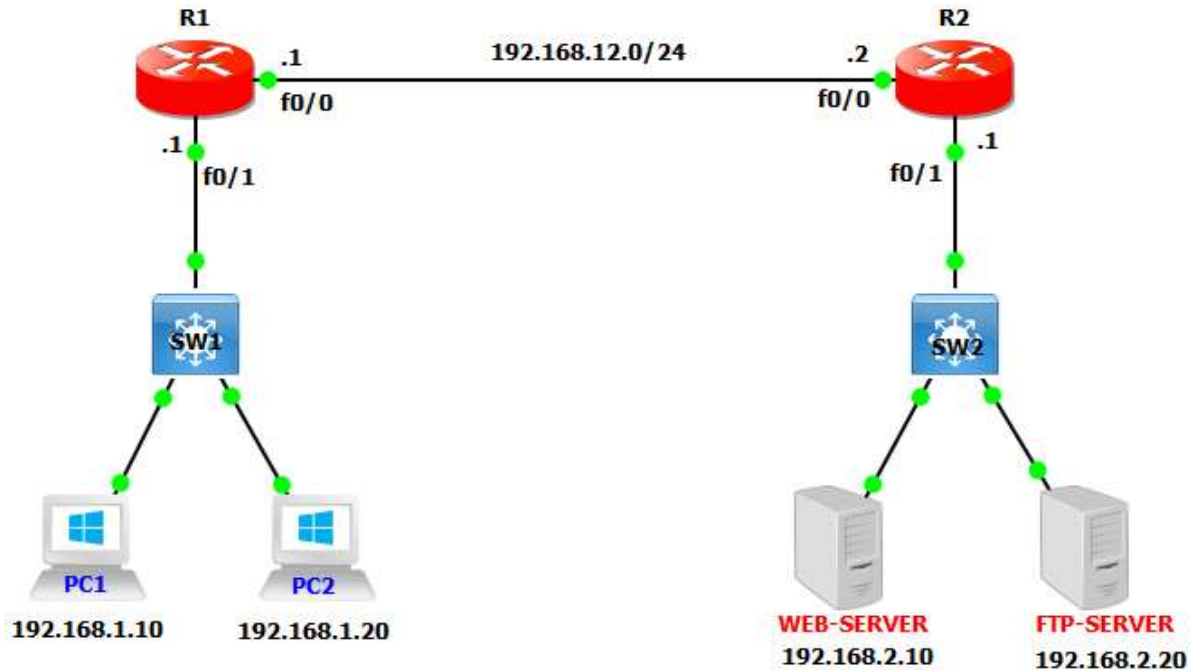


Extended ACLs:

- o Extended IP ACLs check both the source & destination, ports, & protocols.
- o Extended ACLs should be placed as close to the source devices as possible.
- o Number of Extended Access Control List (ACL) is start from 100 end 199.
- o Extended Access Control List is more powerful than standard Access List.

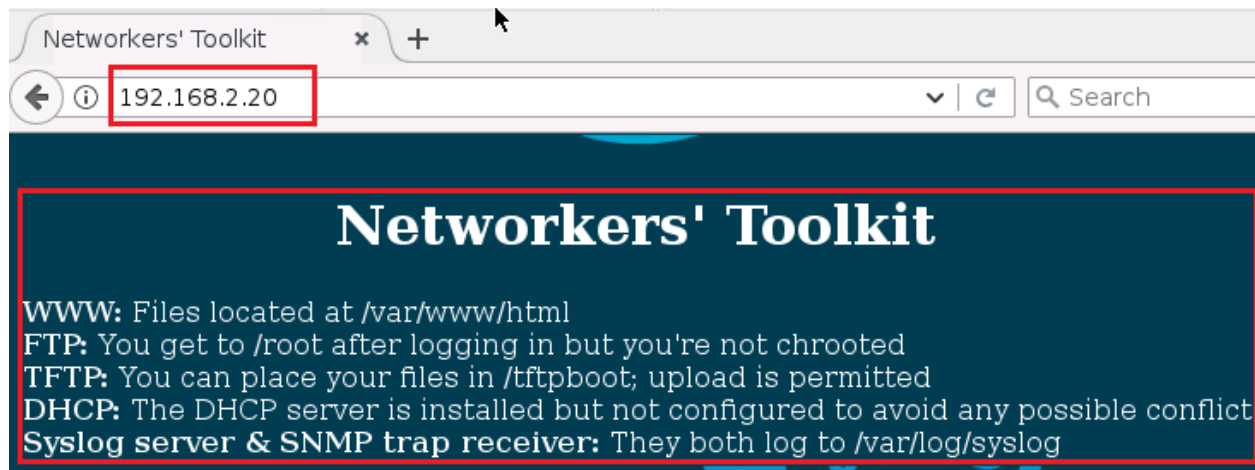
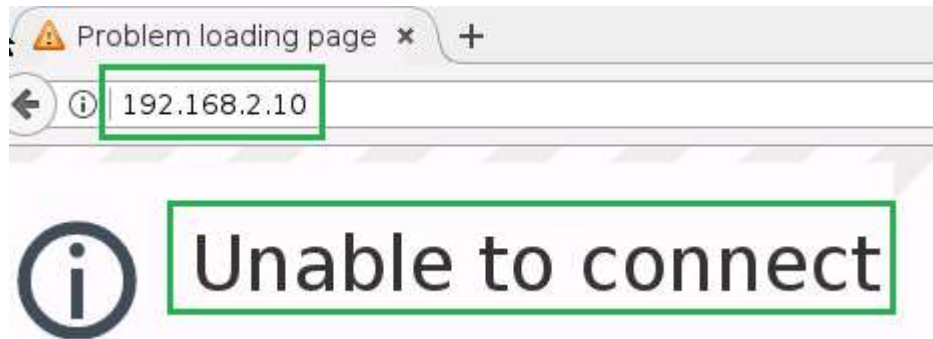


R1 Configuration	
R1(config)#interface f0/0	R1(config)#int f0/1
R1(config-if)#ip add 192.168.12.1	R1(config-if)#ip add 192.168.1.1
255.255.255.0	255.255.255.0
R1(config-if)#no shutdown	R1(config-if)#no shutdown
R1(config)#ip route 0.0.0.0 0.0.0.0 192.168.12.2	
R2 Configuration	
R2(config)#interface f0/0	R2(config)#inter f0/1
R2(config-if)#ip add 192.168.12.2	R2(config-if)#ip add 192.168.2.1
255.255.255.0	255.255.255.0
R2(config-if)#no shutdown	R2(config-if)#no shutdown
R2(config)#ip route 0.0.0.0 0.0.0.0 192.168.12.1	

Extended ACL on R1 to Deny PC1 to Web-Server only HTTP

```
R1(config)#access-list 100 deny tcp host 192.168.1.10 host 192.168.2.10 eq 80
R1(config)#access-list 100 permit ip any any
R1(config)#interface f0/1
R1(config-if)#ip access-group 100 in
```

```
R1#show access-lists
Extended IP access list 100
 10 deny tcp host 192.168.1.10 host 192.168.2.10 eq www (3 matches)
 20 permit ip any any (42 matches)
```



```
root@PC1:~# ping 192.168.1.10
PING 192.168.1.10 (192.168.1.10): 56 data bytes
64 bytes from 192.168.1.10: icmp_seq=0 ttl=64 time=0.066 ms
64 bytes from 192.168.1.10: icmp_seq=1 ttl=64 time=0.046 ms
```