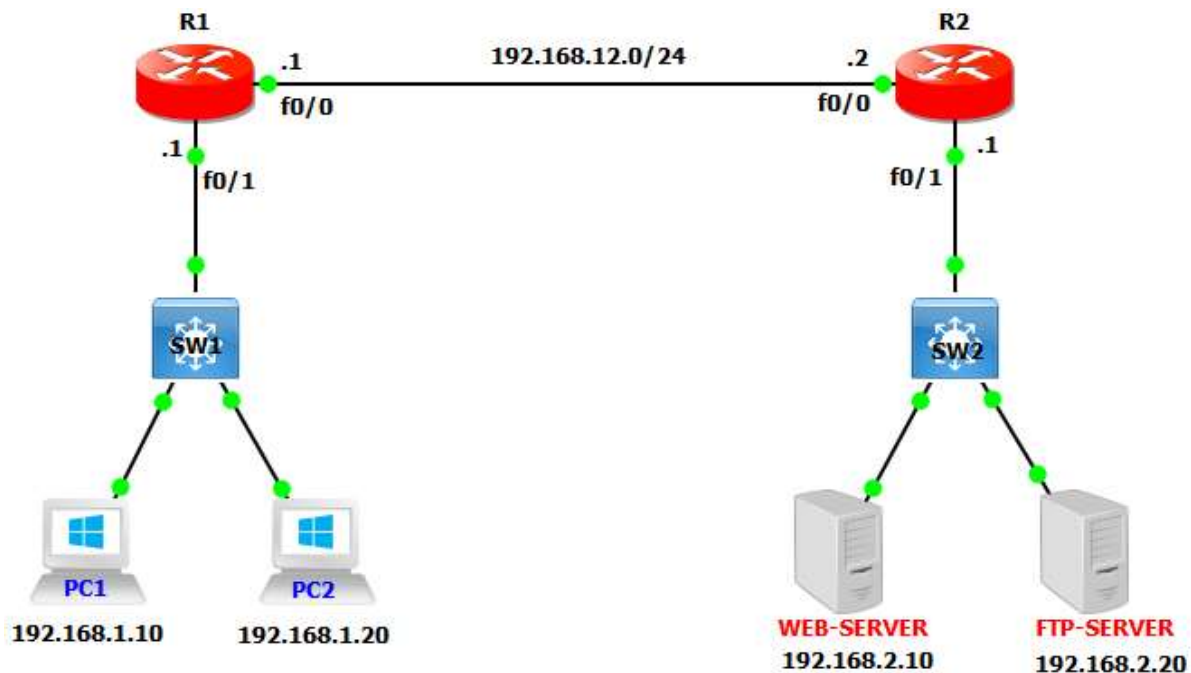


## Named ACL:

- o This allows standard and extended ACLs to be given names instead of numbers.
- o Named Access List provide more flexibility than Number Access Control List.
- o Named Access Control List ACL given names to identify Access Control Lists.
- o Benefit to add new statements to the access list & insert them wherever you like.
- o With number ACL first delete entire access list before reapplying it using updated rules.
- o There are two common types of Named Access Control Lists (Standard and Extended).
- o IP Standard Named Access Control Lists and IP extended named Access Control Lists.



R1 Configuration	
R1(config)#interface f0/0	R1(config)#int f0/1
R1(config-if)#ip add 192.168.12.1	R1(config-if)#ip add 192.168.1.1
255.255.255.0	255.255.255.0
R1(config-if)#no shutdown	R1(config-if)#no shutdown
R1(config)#ip route 0.0.0.0 0.0.0.0 192.168.12.2	
R2 Configuration	
R2(config)#interface f0/0	R2(config)#inter f0/1
R2(config-if)#ip add 192.168.12.2	R2(config-if)#ip add 192.168.2.1
255.255.255.0	255.255.255.0
R2(config-if)#no shutdown	R2(config-if)#no shutdown
R2(config)#ip route 0.0.0.0 0.0.0.0 192.168.12.1	

### Named ACL Configuration on R2

```
R2(config)# ip access-list standard test
R2(config-std-nacl)#deny host 192.168.1.10
R2(config-std-nacl)#permit any
```

```
R1(config)# interface FastEthernet 0/1
R1(config-if)#ip access-group test out
```

### Extended Named ACL on R1 to Deny PC1 to Web-Server only HTTP

```
R1(config)#ip access-list extended test
R1(config-ext-nacl)#deny tcp host 192.168.1.10 host 192.168.2.10 eq 80
R1(config-ext-nacl)#permit ip any any
```

```
R1(config)#interface f0/1
R1(config-if)#ip access-group test in
```