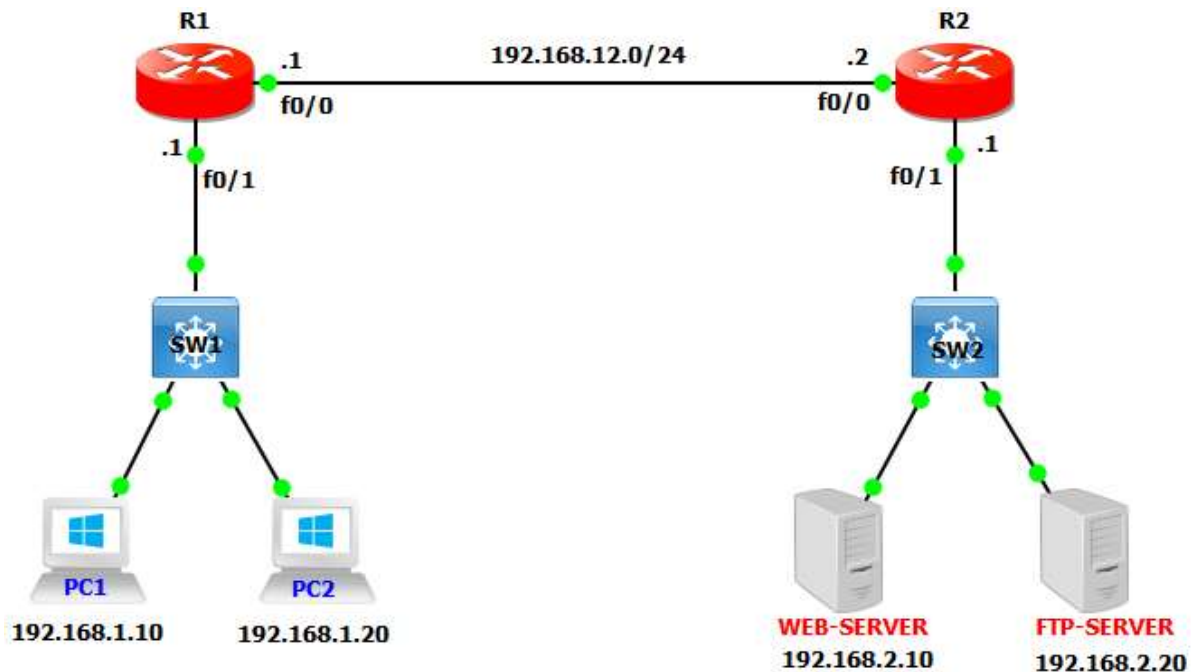


Time-Based ACL:

- o Time-based ACLs that allow for network access based on time or day.
- o Time-based ACLs are only active during a specified time range.
- o For TACL set the time range to be either periodic or absolute.
- o Configure time-based ACL, specify time range & then apply ACL.
- o To verify, run show access-lists and check if the ACL is active.
- o If it is in the time range and the ACL is filtering traffic.



R1 Configuration	
R1(config)#interface f0/0	R1(config)#int f0/1
R1(config-if)#ip add 192.168.12.1	R1(config-if)#ip add 192.168.1.1
255.255.255.0	255.255.255.0
R1(config-if)#no shutdown	R1(config-if)#no shutdown
R1(config)#ip route 0.0.0.0 0.0.0.0 192.168.12.2	
R2 Configuration	
R2(config)#interface f0/0	R2(config)#inter f0/1
R2(config-if)#ip add 192.168.12.2	R2(config-if)#ip add 192.168.2.1
255.255.255.0	255.255.255.0
R2(config-if)#no shutdown	R2(config-if)#no shutdown
R2(config)#ip route 0.0.0.0 0.0.0.0 192.168.12.1	

Time ACL Configuration on R1

```
R1(config)# time-range TEST-TIME
R1(config-time-range)# periodic weekdays 12:00 to 23:00
R1(config-time-range)# exit
R1(config)# access-list 100 permit ip 192.168.1.0 0.0.0.255 any time-range TEST-TIME
R1(config)# access-list 100 deny ip any any
R1(config)# interface FastEthernet 0/1
R1(config-if)# ip access-group 100 in
```