

CCIE Collaboration (<http://labs.ine.com/workbook/toc/ccie-collaboration>) » Unity Connection

Cisco Unity Connection Integration with HQ Cluster using Skinny

« [Cisco Unity Express CME Integration Using SIP Protocol \(/workbook/view/ccie-collaboration/task/cisco-unity-express-cme-integration-using-sip-protocol-MzA3Mw%3D%3D\)](#) | [Cisco Unity Connection Integration with Site B using SIP Protocol \(/workbook/view/ccie-collaboration/task/cisco-unity-connection-integration-with-site-b-using-sip-protocol-MzA3NQ%3D%3D\)](#) »

Last updated: November 10, 2017

CONTENTS >

Use the following values for this task:

```
Voicemail Pilot:  
Voicemail ports:  
MWI On DN:  
MWI Off DN:
```

Tasks

- Integrate HQ CUCM Cluster with HQ CUC using SCCP with the following information
- Call should be forwarded to Voicemail if HQ Phones are busy on a call.
- If the HQ Phones do not answer the call the call should be forwarded after 20 seconds
- The maximum number of calls on a line should be restricted to 4 calls.
- When Integration is completed, you should be able to call into the voicemail pilot number from both HQ Phones and from the local PSTN line by dialing 5022220

Configuration: [Click to collapse](#)

HQ - Publisher

Advanced Features > Voice Mail > Cisco Voice Mail Port Wizard

Cisco Voice Mail Device Information

Enter the device information for ports. A Device Pool selection is required. The Wizard applies these settings to all new ports.

Device Information

Description

Device Pool*

Calling Search Space

AAR Calling Search Space

Location*

Device Security Mode*

Use Trusted Relay Point*

* - indicates required item.

Cisco Voice Mail Directory Numbers

Enter the directory number settings for the new Cisco Voice Mail Server. If a Partition is selected, you must select a Calling Search Space that includes the selected Partition.

Beginning Directory Number * (each new port receives the next available directory number)

Partition

Calling Search Space

AAR Group

Internal Caller ID Display

Internal Caller ID Display (ASCII format)

External Number Mask

* - indicates required item.

Ready to Add Cisco Voice Mail Ports

The information shown below will be applied to the Cisco Voice Mail Ports being created. If this information is correct, click Finish to add the new ports. If the information shown is not correct, click the Back button to edit the information, or Cancel to quit without adding any ports.

Cisco Voice Mail Device Information (apply to all ports)

Number of Ports to Add 3 (adding ports 1 – 3)

Cisco Voice Mail Server Name CiscoUM1

Description < None >

Device Pool DP-Phones

Calling Search Space < None >

AAR Calling Search space < None >

Location Hub_None

Device Security Mode Non Secure Voice Mail Port

Use Trusted Relay Point Default

Directory Number Information

New Directory Numbers 2221 – 2223

Partition < None >

Calling Search Space < None >

AAR Group < None >

Internal Caller ID Display VoiceMail

Internal Caller ID Display (ASCII format) VoiceMail

External Number Mask < None >

Line Group CiscoUM1

Cisco Voice Mail Port Wizard Results

- Successfully create device CiscoUM1-V11
- Successfully create number plan 2221
- Successfully create devicenumplanmap for device/humplan CiscoUM1-V11/2221
- Successfully create device CiscoUM1-V12
- Successfully create number plan 2222
- Successfully create devicenumplanmap for device/humplan CiscoUM1-V12/2222
- Successfully create device CiscoUM1-V13
- Successfully create number plan 2223
- Successfully create devicenumplanmap for device/humplan CiscoUM1-V13/2223
- Successfully create linegroup CiscoUM1
- Successfully create linegroupnumplanmap for number plan(s) above and (new/existing) linegroup CiscoUM1
- Successfully create linegroupnumplanmap for number plan(s) above and (new/existing) linegroup CiscoUM1
- Successfully create linegroupnumplanmap for number plan(s) above and (new/existing) linegroup CiscoUM1
- The database has been inserted/updated/deleted successfully

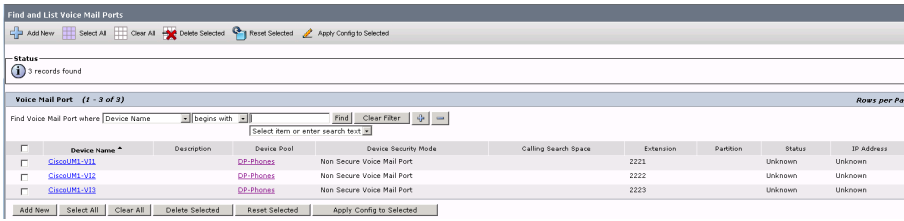
3 new Cisco Voice Mail Ports were added successfully. They are added to Line Group CiscoUM1 . To start using these voice mail ports, you need to complete the following steps.

(1) Add this Line Group to a new or existing [Hunt List](#)

(2) Assign this Hunt List to a [Hunt Pilot](#)

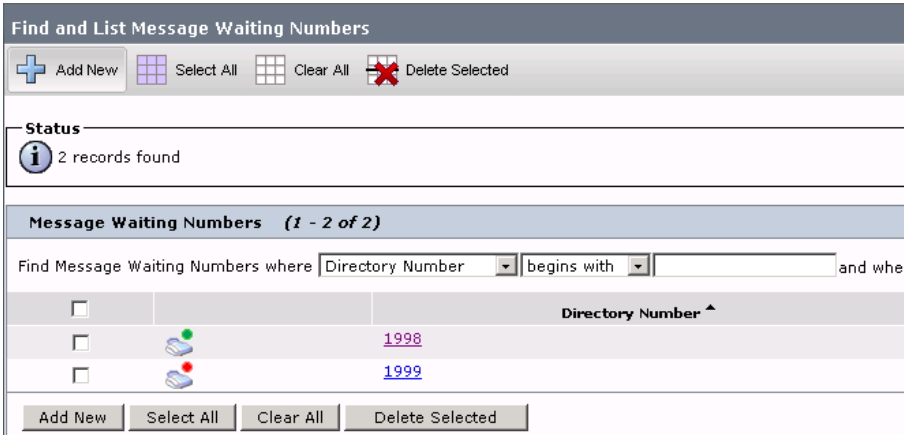
[Return to Cisco Voice Mail Port Wizard start page.](#)

[Go to Cisco Voice Mail Ports page](#)



Advanced Features > Voice Mail > Message Waiting > Add New

Advanced Features > Voice Mail > Message Waiting > Add New



Advanced Features > Voice Mail > Voice Mail Pilot > Default

Advanced Features > Voice Mail > Voice Mail Profile > Default

Call routing > Route/Hunt > Line Group > CiscoUM1 - Created by the Wizard!

Call routing > Route/Hunt > Hunt List **(Add New)**

Hunt List Configuration

Save Delete Copy Reset Apply Config Add New

Status

Update successful

Call routing > Route/Hunt > Hunt Pilot (**Add New**)

Hunt Pilot Configuration

Save

Status

Status: Ready

Pattern Definition

Hunt Pilot*	2220
Route Partition	< None >
Description	
Numbering Plan	< None >
Route Filter	< None >
MLPP Precedence*	Default
Hunt List*	HL-VM (Edit)

Device > Phone > HQ Phone 1 & 2 (Line Settings)

HQ - Cisco Unity Connection

Telephony Integrations > Phone Systeme (Add New)

Edit > Servers

Telephony Integrations > Port > Add New

➤ **Reset the port group from Unity in case it doesn't register on HQ CUCM**

CONTENTS

Verification

Press Envelope Button on HQ Phone 1/HQ Phone 2 and listen for Cisco Unity Connection.
Check the Codec being used for VoiceMail.

« [Cisco Unity Express CME Integration Using SIP Protocol \(/workbook/view/ccie-collaboration/task/cisco-unity-express-cme-integration-using-sip-protocol-MzA3Mw%3D%3D\)](/workbook/view/ccie-collaboration/task/cisco-unity-express-cme-integration-using-sip-protocol-MzA3Mw%3D%3D) | [Cisco Unity Connection Integration with Site B using SIP Protocol \(/workbook/view/ccie-collaboration/task/cisco-unity-connection-integration-with-site-b-using-sip-protocol-MzA3NQ%3D%3D\)](/workbook/view/ccie-collaboration/task/cisco-unity-connection-integration-with-site-b-using-sip-protocol-MzA3NQ%3D%3D) »