



Networkforyou

Subscribe to our
You Tube Channel



Networkforyou



**Welcome
To
Network for you
CISCO DNA Center**



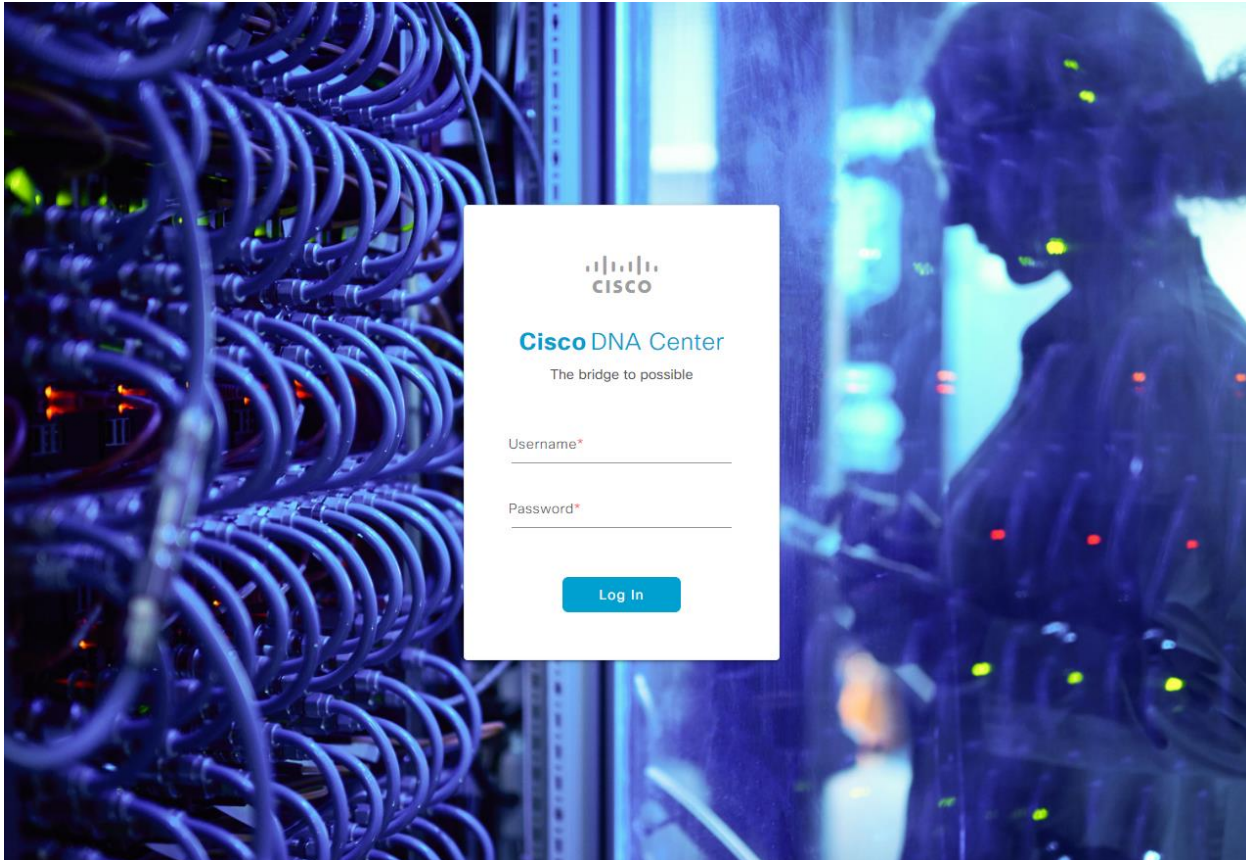
Email us:
networkforyou4@gmail.com

1 of 8

WhatsApp Us : +918143809578



CISCO DNA Center:



- CISCO DNA (Digital Network Architecture) Center can help us to bring it all together into single dashboard.
- We are going to manage our network by using a graphical and programming interface is called CISCO DNA Center.
- Cisco DNA center is an appliance that we can install in our network or there's an option for having DNA in the cloud
- CISCO DNA center is going to give us a graphical interface and a programming interface to design our network to add devices configured devices on the network monitor troubleshoot the network.
- **Cisco DNA center focuses on first up there's design** with design we can take a map of the world and we can add an area and we could say within that area we've got this building or there's another area within an area we can put a floor on a building
- we can import a floor plan and we can drag and drop devices onto that floor plan we can say what our IP address allocation is this is a way for us to design our network through this graphical interface

Email us:
networkforyou4@gmail.com

2 of 8

WhatsApp Us : +918143809578



- **DNA center can apply policy we can** assign a policy to an entire group maybe allowing or denying them access to something we could do IP based access control and quality of service we can set up a queuing profile to save what being with amounts are given to different applications
- **we can also do provisioning that** we can actually do plug and play for our devices we can have a new network device set to whatever location was going to be installed have somebody there plug it in and when the device boots up it's going to go out and get some IP address information from dhcp including some DNS server information and is going to resolve the IP address of a DNA center server and is going to go up to that server and based on its serial library it's going to be able to download a configuration file so we pretty much add zero touch on getting that thing installed we just set up the profile of that device within DNA center had somebody plug it in and installed itself.
- **Cisco DNA center is assurance** and this is where we could monitor the health of the network this is going to help us with troubleshooting if there are existing faults we can see what those are and based on experience of Cisco TAC Cisco DNA Centre is going to give us feedback about what we should do to try to resolve this issue.
- what if I tried to do a telnet session between these two devices what would happen let's say there's an access control list in the way that might be blocking that traffic it's going to give us a graphical representation of the network and show us exactly where that easy lives that's blocking our traffic.
- We can also do something called network time travel so if there were some sort of an issue that came up at 3:00 AM last night we could go back in time and see what was going on in the network at that time.
- one of the most powerful things about Cisco DNA center is its ability to act as a programming platform we have a large collection of APIs application programming interfaces that will allow us to do via programme what we can do graphically if we want to provision or set a policy or gather troubleshooting information we could do that with a Python script for example using some of these APIs And obviously Cisco DNA centre is very very robust.

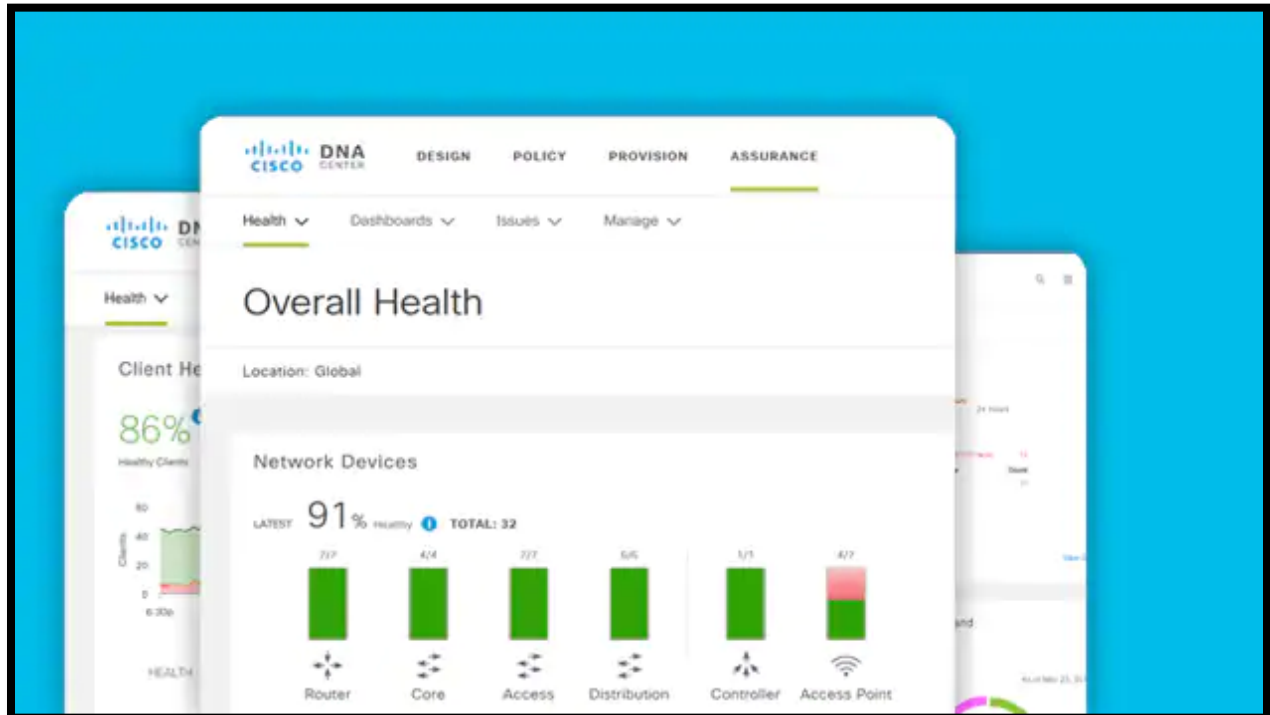


DevNet DNA Center Lab URL and Username and password

<https://sandboxdnac.cisco.com>

User: devnetuser

Password: Cisco123!

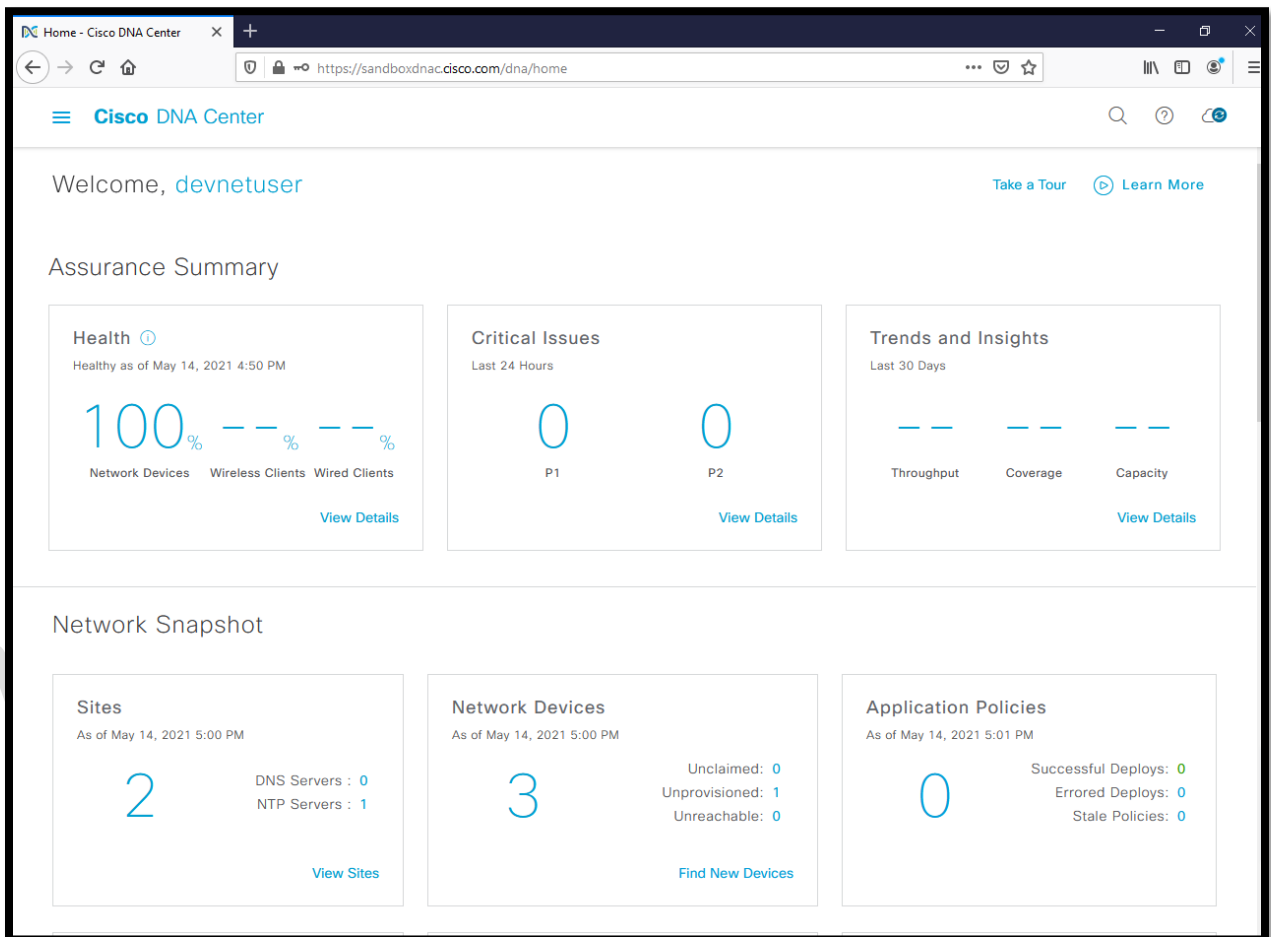


- let's go out to live interface and look through some of the menus
- let's take a look at DNA center will go ahead and get logged in and here we see those things we were talking about a moment ago design policy provision assurance platform

Email us:
networkforyou4@gmail.com

4 of 8

WhatsApp Us : +918143809578



Design:

- Design layout like select city in Map and add building and design Network layout.
- Model entire network, from sites & buildings to devices & links, both physical & virtual.

Policy:

- In policy can apply policy to that network devices and setup policy for different application.
- DNA Center platform enables creation of application policies used to reflect organizations.
- Use the policies to automate and simplify network management, reducing cost and risk.
- In Cisco DNA Center use the Policy to speeding rollout of new and enhanced the services.

Email us:
networkforyou4@gmail.com

5 of 8

WhatsApp Us : +918143809578



Provision:

- In provision can installed network devices or can add and remove network devices.
- Provide new services to users with ease, speed & security across enterprise network.
- In Cisco Digital Network Architecture in Cisco regardless of network size & complexity.

Assurance:

- This is we can do troubleshooting, can monitor the status of network & check health.
- In Assurance can check Network health and can monitor the issue and get suggestion.
- Use proactive monitoring and insights from the network, devices, and applications.
- To predict problems faster and ensure that policy and configuration changes achieve.

Network Configuration

Design

Model your entire network, from sites and buildings to devices and links, both physical and virtual, across campus, branch, WAN and cloud.

- Add site locations on the network
- Designate golden images for device families
- Create wireless profiles of SSIDs

Policy

Use policies to automate and simplify network management, reducing cost and risk while speeding rollout of new and enhanced services.

- Segment your network as Virtual Networks
- Create scalable groups to describe your critical assets
- Define segmentation policies to meet your policy goals

Provision

Provide new services to users with ease, speed and security across your enterprise network, regardless of network size and complexity.

- Onboard and manage unclaimed devices
- Add, update or delete devices managed by the controller
- Provision switches, routers, WLCs and APs in defined site
- Set up Campus Fabric across switches

Assurance

Use proactive monitoring and insights from the network, devices, and applications to predict problems faster and ensure that policy and configuration changes achieve the business intent and the user experience you want.

- Assurance Health
- Assurance Issues

Platform

Use Cisco DNA Center platform, to programmatically access your network through Intent APIs, integrate with your preferred IT systems to create end-to-end solutions and add support for multi-vendor devices.

- View the API Catalog
- Configure Cisco DNA Center - to - Third Party Integrations

Email us:
networkforyou4@gmail.com

6 of 8

WhatsApp Us : +918143809578



Cisco DNA Center Assurance can be used to troubleshoot network problems by providing visibility into the network, identifying potential issues, and providing recommendations for remediation.

Connectivity: Assurance can be used to troubleshoot connectivity problems by verifying that devices are able to reach each other. This can be done by viewing the connectivity dashboard, which provides a graphical representation of the network topology and the connectivity between devices.

Monitoring: Assurance can be used to monitor the health of devices and the network. This can be done by viewing the health dashboard, which provides a summary of the health of all devices in the network. The health dashboard also includes a list of any potential issues that have been detected.

Device health: Assurance can be used to monitor the health of devices by collecting data on a variety of metrics, such as CPU usage, memory usage, and temperature. This data can be used to identify potential problems with devices before they cause outages.

Network health: Assurance can be used to monitor the health of the network by collecting data on a variety of metrics, such as bandwidth utilization, packet loss, and latency. This data can be used to identify potential problems with the network before they impact user experience.

To troubleshoot a network problem using Cisco DNA Center Assurance, you can follow these steps:

Identify the problem. What is the symptom of the problem? Is it a connectivity problem, a performance problem, or something else?

Gather data. Use Cisco DNA Center Assurance to gather data on the network. This data can be used to identify the root cause of the problem.

Analyze the data. Use the data that you have gathered to analyze the problem. This will help you to identify the root cause of the problem.

Remediate the problem. **Once you have identified the root cause of the problem, you can remediate the problem. This may involve making changes to the network configuration, updating firmware, or replacing hardware.**

Cisco DNA Center Assurance is a powerful tool that can be used to troubleshoot network problems. By following the steps above, you can use Assurance to quickly and effectively identify and resolve network problems.

Email us:
networkforyou4@gmail.com

7 of 8

WhatsApp Us : +918143809578



Networkforyou

Subscribe to our
You Tube Channel

Here are some additional tips for troubleshooting network problems with Cisco DNA Center

Assurance:

- Use the troubleshooting wizard. The troubleshooting wizard can help you to quickly identify and resolve network problems.
- Use the support portal. The Cisco support portal has a wealth of resources that can help you to troubleshoot network problems.
- Contact Cisco support. If you are unable to resolve the problem on your own, you can contact Cisco support for assistance.

Networkforyou

Email us:
networkforyou4@gmail.com

8 of 8

WhatsApp Us : +918143809578