

CCIE Lab Center

CLC CCIE Study Materials – Free

CCIE Enterprise Infrastructure Practice Lab v1.0

Download Link: <https://ccielabcenter.com/downloads/>

Contents:

1. Lab Topology
2. Lab Simulator Eve-ng (.unl)
3. Lab Device Images
4. Lab Workbook (Topology & Questions)
5. Lab Workbook (Initial Configuration, Solution & Verification) – Under Process

CCIE Enterprise Infrastructure SDWAN Practice Lab v1.0

Download Link: <https://ccielabcenter.com/product-category/sd-wan/>

Contents:

1. Lab Topology
2. Lab Emulator Eve-ng (.unl) Pro and Community Edition
3. Lab Workbook/Tutorial (Topology, Task, Solution, Verification)
4. Lab Device Images
5. Ip Address Schema
6. Devices Initial/Pre Configuration
7. License: SerialFile.viptela

CCIE Lab Center

CCIE Enterprise Infrastructure SDWAN Practice Lab v1.0 – All Section Solution Videos

CLC CCIE Enterprise Infrastructure SD-Wan Practice Lab v1.0
Complete Workbook Video Solution/Tutorial @Zero Cost

- Section 1: https://www.youtube.com/watch?v=kcvDb9gX_18
- Section 2: <https://www.youtube.com/watch?v=qhsP3gwOXM4>
- Section 3: <https://www.youtube.com/watch?v=rmy3bqbSwJI>
- Section 4: <https://www.youtube.com/watch?v=5JigOFS6wnY>
- Section 5: <https://www.youtube.com/watch?v=6okgOz9QWvo>
- Section 6: <https://www.youtube.com/watch?v=kY7hc1VFtU>
- Section 7: <https://www.youtube.com/watch?v=b2y37mElNMs>
- Section 8: https://www.youtube.com/watch?v=7buu17f_3g0
- Section 9: <https://www.youtube.com/watch?v=zyzwT4nVgr4>
- Section 10: <https://www.youtube.com/watch?v=q9liahieWgq>
- Section 11: <https://www.youtube.com/watch?v=id7cYoJsLjM>
- Section 12: <https://www.youtube.com/watch?v=LIEzLmr5dpQ>
- Section 13: https://www.youtube.com/watch?v=-cw_tCeDccg
- Section 14: <https://www.youtube.com/watch?v=3nPuTC6uQ9k>
- Section 15: <https://www.youtube.com/watch?v=SQ13j1-J01Q>
- Section 16: <https://www.youtube.com/watch?v=e4bQvBEbSKc>
- Section 17: https://www.youtube.com/watch?v=AZpsFxXK_8g

CCIE Lab Center

CCIE Enterprise Infrastructure SDWAN Practice Lab v2.0

Download Link: <https://ccielabcenter.com/product-category/sd-wan/>

Contents:

1. Lab Topology
2. Lab Emulator Eve-ng (.unl) Pro and Community Edition
3. Lab Workbook/Tutorial (Topology, Task, Solution, Verification)
4. Lab Device Images
5. Ip Address Schema
6. Devices Initial/Pre Configuration
7. License: SerialFile.viptela

CCIE Enterprise Infrastructure SDWAN Practice Lab v2.0 – All Section Solution Videos

- Section 1: <https://www.youtube.com/watch?v=BSyphjRm9f0>
- Section 2: <https://www.youtube.com/watch?v=spwBT9tFIDo>
- Section 3: <https://www.youtube.com/watch?v=Sp1KiiotUdk>
- Section 4: <https://www.youtube.com/watch?v=AIHMGPDdgyI>
- Section 5: <https://www.youtube.com/watch?v=cwXuA1x6BIU>
- Section 6: https://www.youtube.com/watch?v=omnPn_kSNgo
- Section 7: <https://www.youtube.com/watch?v=UZd80UCvBHQ>
- Section 8: <https://www.youtube.com/watch?v=qUmeUv-lpKw>
- Section 9: <https://www.youtube.com/watch?v=Etn4QcJQgxk>
- Section 10: <https://www.youtube.com/watch?v=ldFvw9SjEpl>
- Section 11: <https://www.youtube.com/watch?v=UaPtYGQoJul>
- Section 12: <https://www.youtube.com/watch?v=XVNSZ61Tcx8>
- Section 13: <https://www.youtube.com/watch?v=z9qCtIWm2sk>
- Section 14: <https://www.youtube.com/watch?v=3RBvzwjxvF8>
- Section 15: <https://www.youtube.com/watch?v=vBTgz67CIDk>

CCIE Lab Center

*** Upcoming Free CCIE Materials @Zero Cost ***

1. CCIE Enterprise Infrastructure Practice Lab
2. CCIE Security Practice Lab
3. CCIE Service Provider Practice Lab
4. CCIE Data Center Practice Lab

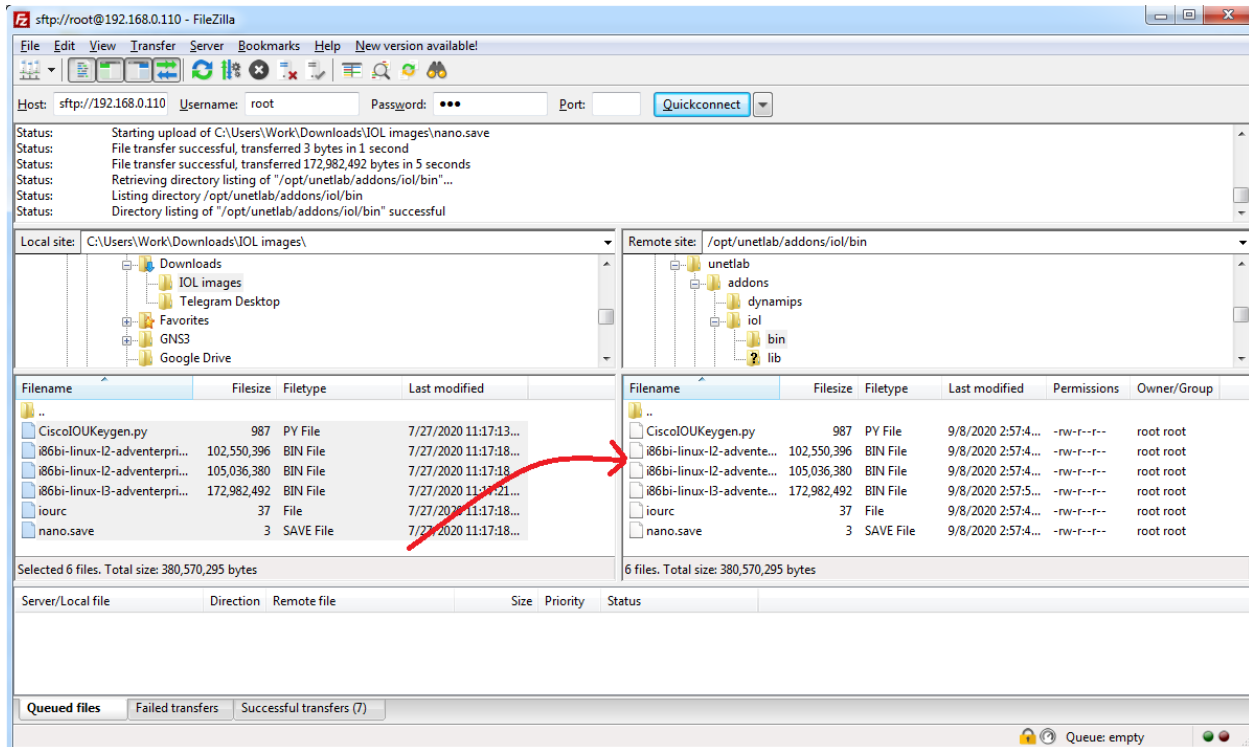


<https://ccielabcenter.com>

<https://t.me/cciestudygroup>

CCIE Lab Center

4. Upload IOL files in Eve-ng as shown below



5. Go to Eve-ng VM/Instance : Login

6. Run Command through CLI

✓ `cd /opt/unetlab/addons/iol/bin/`

```
root@eve-ng:~# cd /opt/unetlab/addons/iol/bin
root@eve-ng:/opt/unetlab/addons/iol/bin#
```

✓ `ls`

```
root@eve-ng:/opt/unetlab/addons/iol/bin# ls
CiscoIOUKeygen.py          i86bi-linux-12-adventerprisek9-15.2d.bin  iourc
i86bi-linux-12-adventerprisek9-15.2b.bin  i86bi-linux-13-adventerprisek9-15.2T.bin  nano.save
root@eve-ng:/opt/unetlab/addons/iol/bin# _
```

CCIE Lab Center

✓ python2 CiscoIOUKeygen.py

```
root@eve-ng:/opt/unetlab/addons/iol/bin# python2 CiscoIOUKeygen.py
*****
Cisco IOU License Generator - Kal 2011, python port of 2006 C version
hostid=007f0101, hostname=eve-ng, ioukey=7f0343

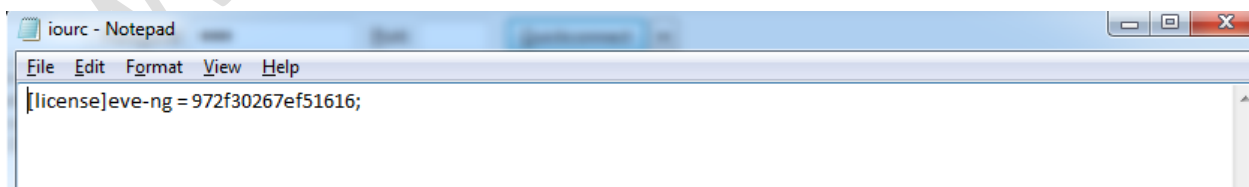
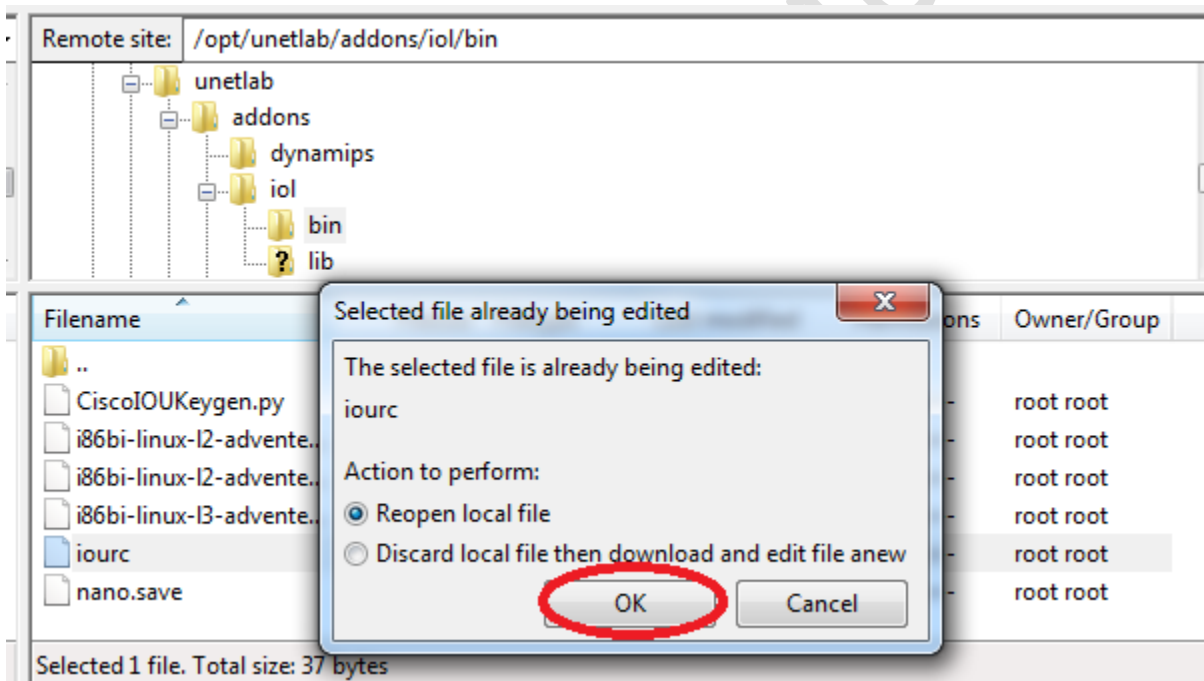
Add the following text to ~/.iourc:
[license]
eve-ng = 972f30267ef51616;

You can disable the phone home feature with something like:
echo '127.0.0.127 xml.cisco.com' >> /etc/hosts

root@eve-ng:/opt/unetlab/addons/iol/bin# _
```

7. Go to FileZilla again

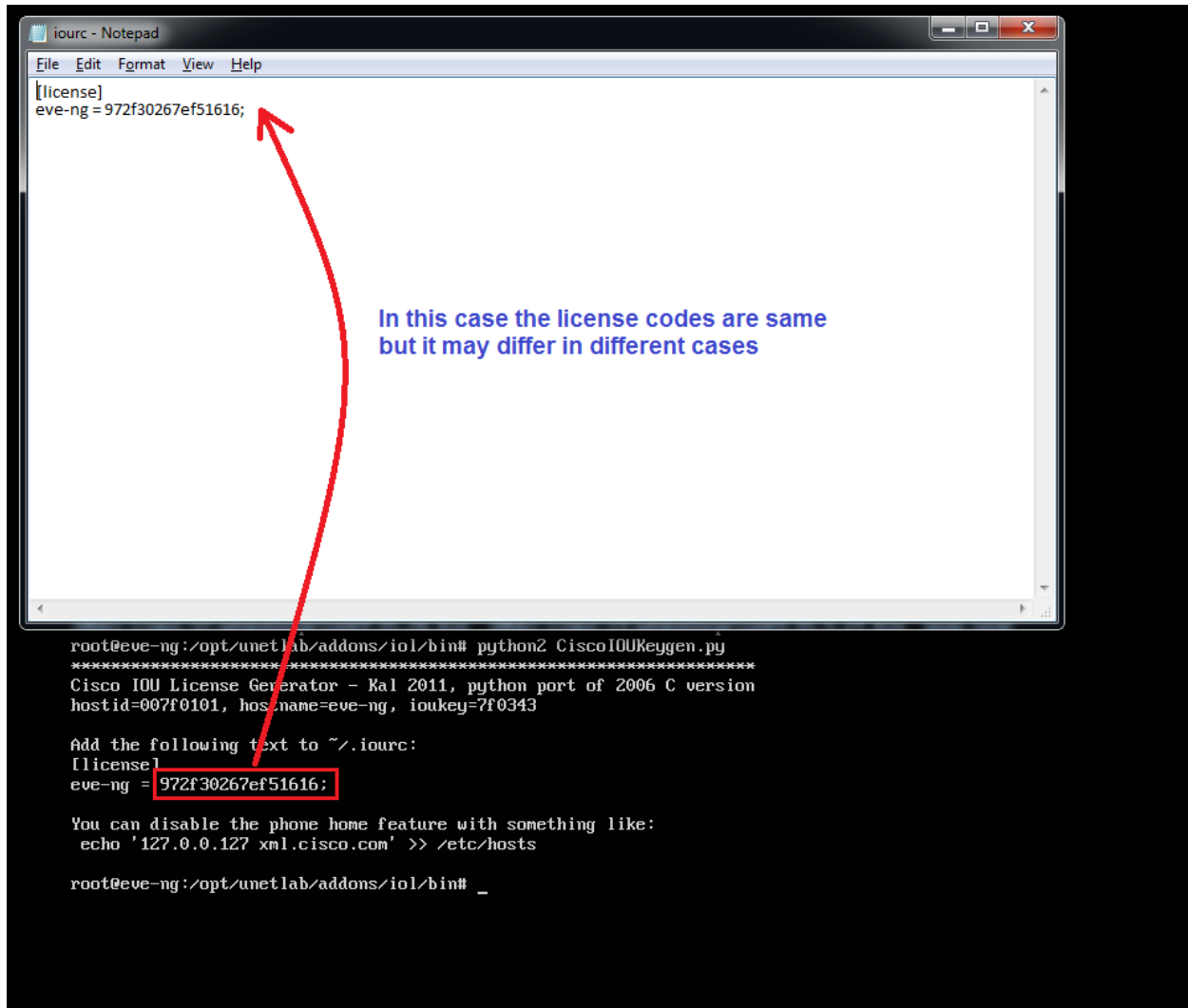
- Right Click on IOURC file at /opt/unetlab/addons/iol/bin/ and select view/edit option



CCIE Lab Center

8. Now edit the license

- Copy license code generated from eve-ng and paste it into this iourc file



```
root@eve-ng:/opt/unetlab/addons/iol/bin# python2 CiscoIOUKeygen.py
*****
Cisco IOU License Generator - Ral 2011, python port of 2006 C version
hostid=007f0101, host.name=eve-ng, ioukey=7f0343

Add the following text to ~/.iourc:
[[license]
eve-ng = 972f30267ef51616;

You can disable the phone home feature with something like:
echo '127.0.0.127 xml.cisco.com' >> /etc/hosts

root@eve-ng:/opt/unetlab/addons/iol/bin# _
```

In this case the license codes are same but it may differ in different cases

- Save & Exit

9. Run CLI Command

- ✓ /opt/unetlab/wrappers/unl_wrapper -a fixpermissions

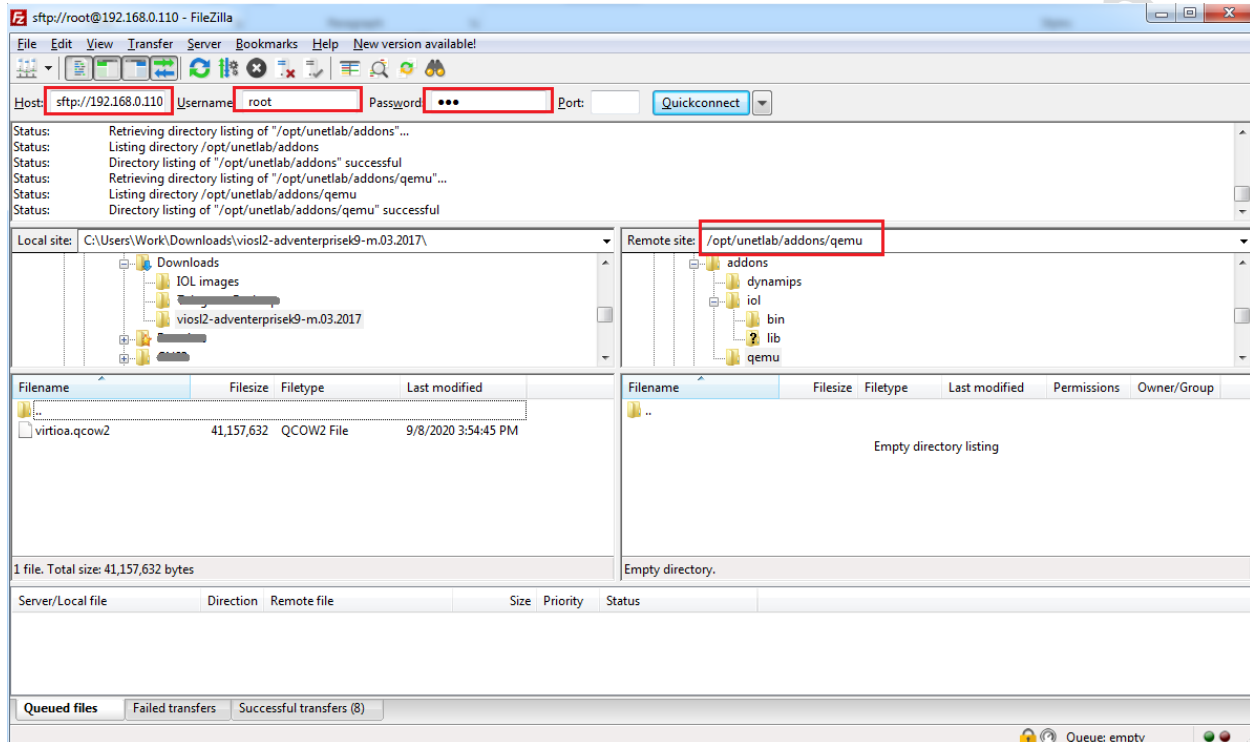
For More Information

<https://www.eve-ng.net/index.php/documentation/howtos/howto-add-cisco-iol-ios-on-linux/>

CCIE Lab Center

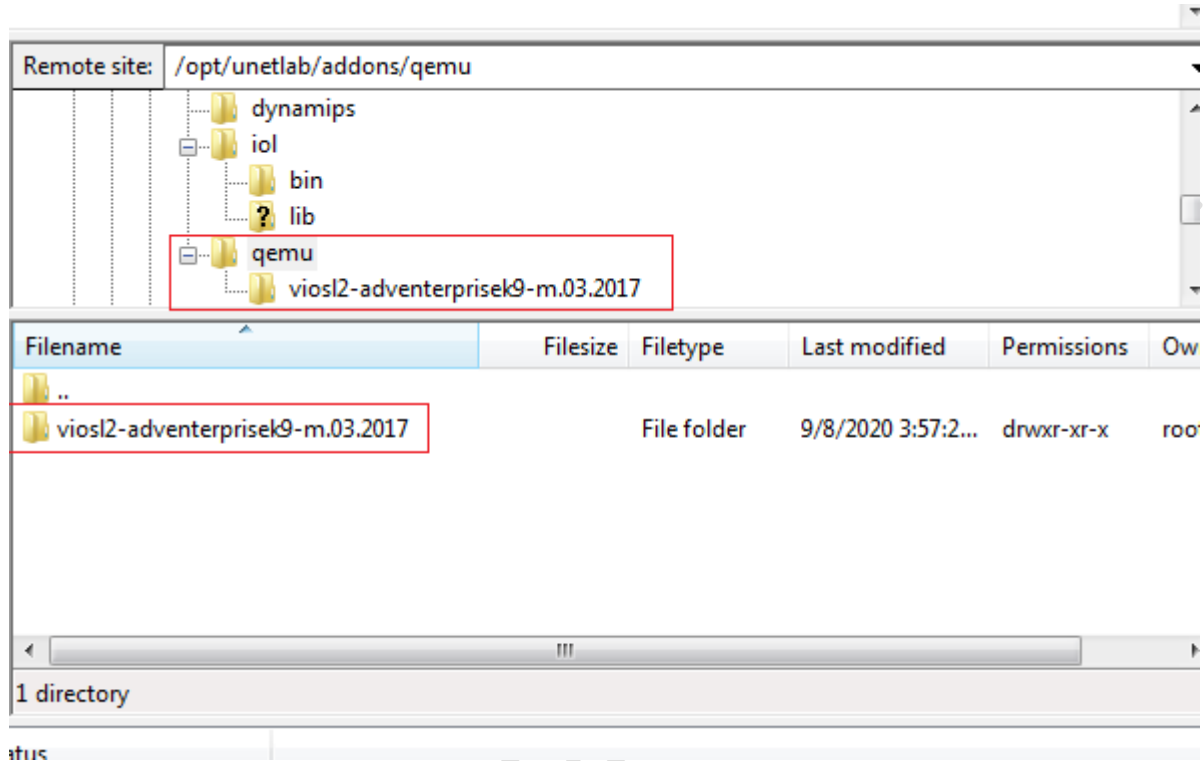
Steps to install vIOS Images

1. Power on Eve-ng VM/Instance
2. Open FileZilla/WinSCP.
3. Login using ip address from Eve-ng screen, Username: root & Password: eve

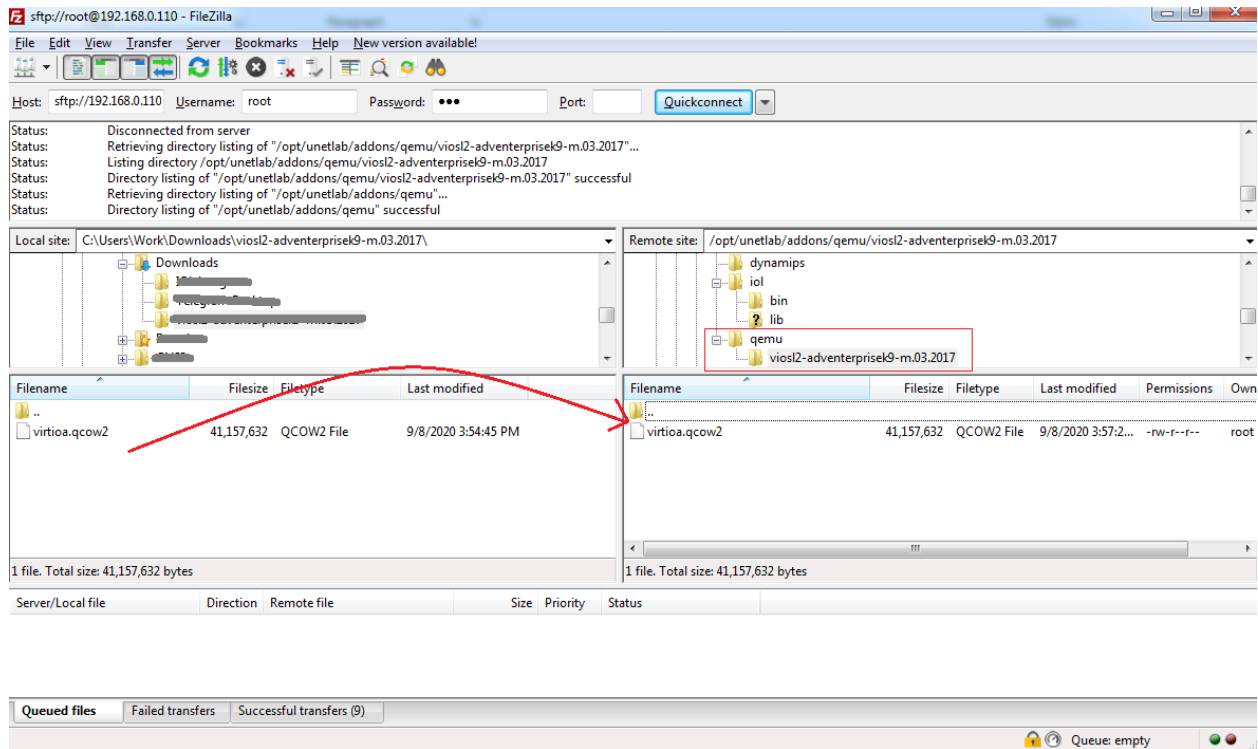


CCIE Lab Center

4. Create a new directory / new folder and name it
✓ vios12-adventerprisek9-m.03.2017



5. Upload vIOS file (virtioa.qcow2) in Eve-ng as shown below



6. Run CLI Command

- ✓ /opt/unetlab/wrappers/unl_wrapper -a fixpermissions

Steps to install Windows Images

<https://www.eve-ng.net/index.php/documentation/howtos/howto-create-own-windows-host-on-the-eve/>

Steps to configure Virtual PC (vPC)

- ✓ VPCS> ip 172.16.10.254/24 172.16.10.1

CCIE Lab Center

Steps to enable NAT cloud (Internet) in Eve-ng Community Version

<https://d-herrmann.de/2018/04/nat-cloud-in-eve-ng-community-edition/>

Steps to enable NAT cloud (Internet) in Eve-ng Pro Version

<https://www.eve-ng.net/images/EVE-COOK-BOOK-1.0.pdf>

Images used in CCIE Lab Center Enterprise & SD-Wan Practice Labs

- Viptela 18.4.4: vManager, vBond, vSmart, vEdge
- MPLS Router: i86bi-linuxl3-adventerprisek9-15.5.2T.bin
- Internet Router: i86bi-linuxl3-adventerprisek9-15.5.2T.bin
- L2 Switches: viosl2-adventerprisek9-m.03.2017 & i86bi-linuxl2-adventerprisek9-15.2d.bin
- Host system: Virtual PC (Community Version)
- Host system: Docker server—eve-gui-server.latest (Pro Version)
- CA Server: Windows 7/10 (Community Version)
- CA Server: Docker- eve-gui-server.latest (Pro Version)

Download Lab Images

1. SD-Wan Images
 - vManager:
<https://mega.nz/folder/x7RAgaiT#OlabI8QD41N5jYNI5NyYWw/file/AmwRzYoS>
 - vSmart:
<https://mega.nz/folder/x7RAgaiT#OlabI8QD41N5jYNI5NyYWw/file/cqB3AAzK>
 - vBond & vEdge:
<https://mega.nz/folder/x7RAgaiT#OlabI8QD41N5jYNI5NyYWw/file/gnQFDSTS>
2. IOL Images
 - L2 & L3:
https://mega.nz/file/tvoBVYQT#o8NnjIYsAcoi896WRO_7bUkPUL1q1I9aIAN0OKfi-A
3. vIOS Images
 - L2:
https://mega.nz/file/YvIQxS4T#O3hI36EdpWSxnsoNqDX9Pb5ExENayWDZzNTM_UON_a4
4. Windows
 - Windows7:
https://drive.google.com/file/d/1AR1jnso6-lGipnKr3JxdGk09e7vvhm_z/view?usp=sharing

Note:

- The lab workbook is made on Eve-ng Pro version
- Users using Pro version & Community version must use Lab file (.unl) & Topology(.png) as per their requirements respectfully.
- When using Eve-ng Community version, while doing task for initial configuration, change interface of devices in notepad file wherever required and paste the configurations accordingly

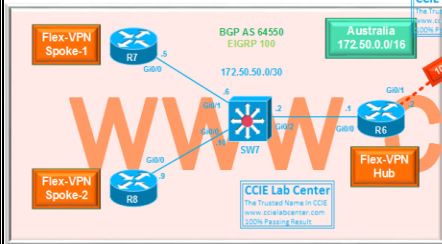
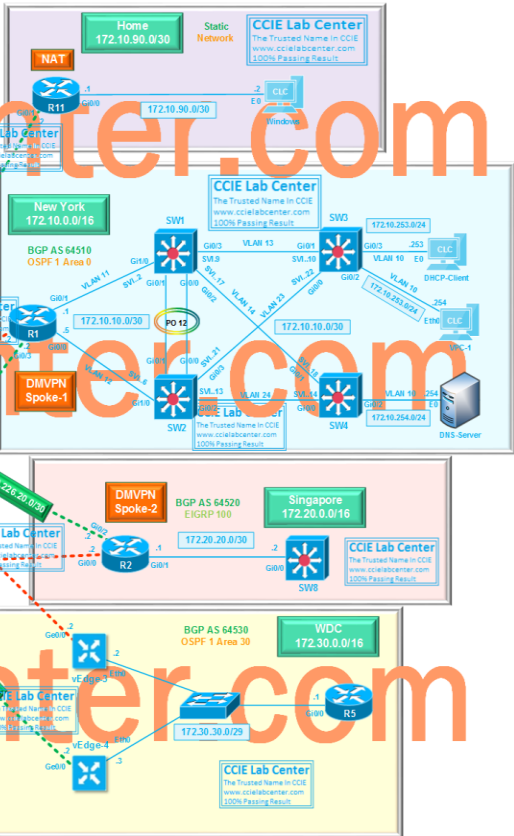
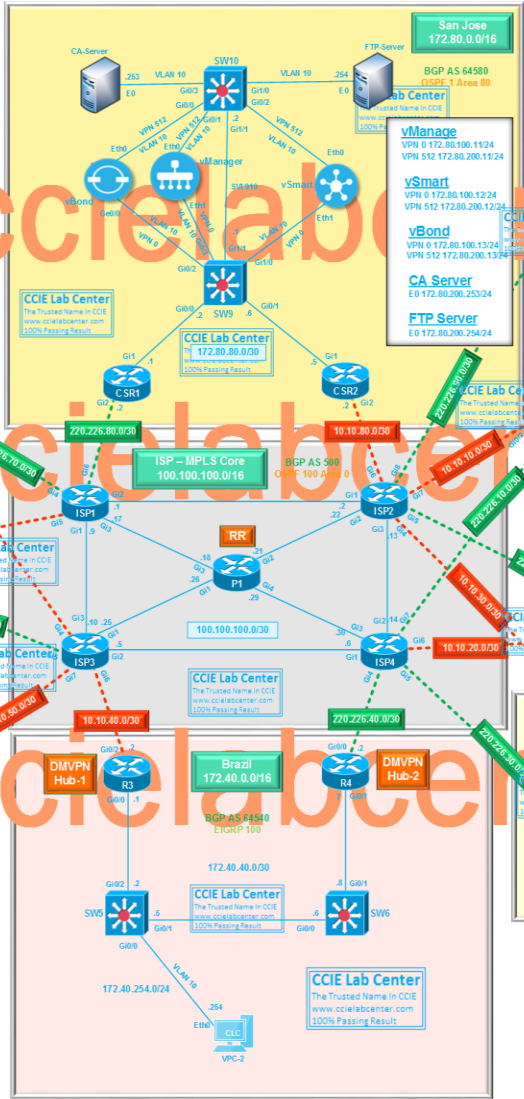
CCIE Lab Center

**CCIE Lab Center**
The Trusted Name in CCIE

CCIE Lab Center (CLC) Network

- MPLS Link
- Internet Link
- GigE/Gig
- E/Eth
- Giga Link
- Ethernet Link

CCIE Lab Center
Web - <https://ccielabcenter.com>
Mail - care@ccielabcenter.com



CCIE Lab Center



CCIE Lab Center

Web - <https://ccielabcenter.com>
 Mail - care@ccielabcenter.com

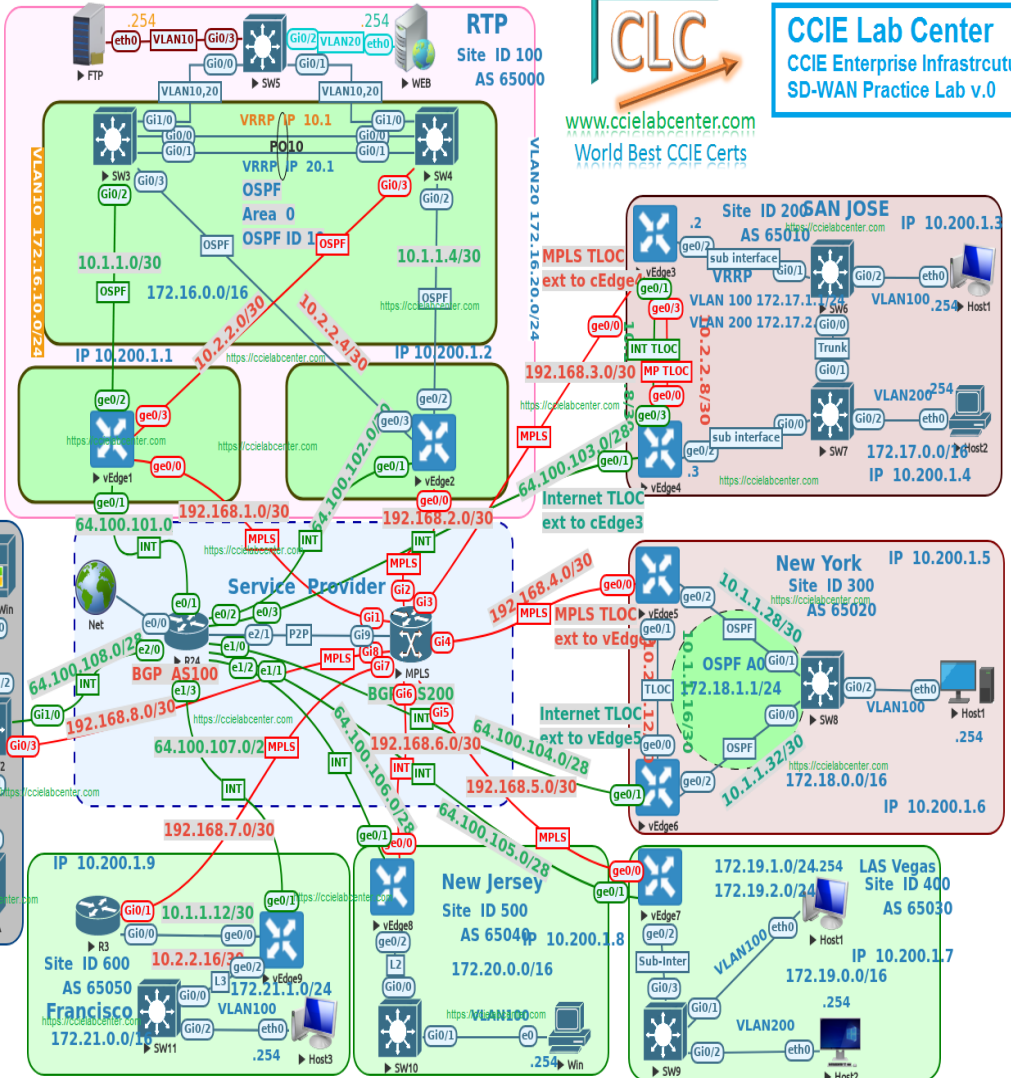
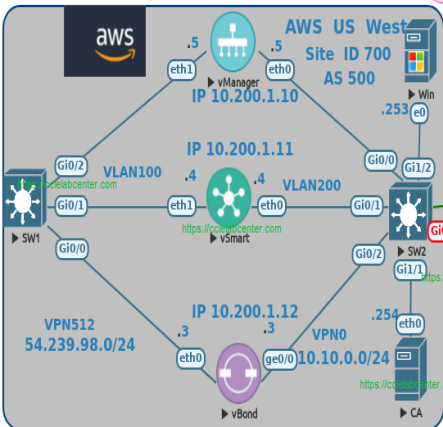
CCIE Enterprise Infrastructure
 Practice Labs / Real Labs
 Online Lab Training
 Rack-Rental

Services Available 24*7*365



CCIE Lab Center
 CCIE Enterprise Infrastructure
 SD-WAN Practice Lab v.0

www.ccielabcenter.com
 World Best CCIE Certs



WWW.CCIE.LAB.CENTR.COM

WEBISTE - [HTTPS://CCIELABCENTER.COM](https://ccielabcenter.com)

STUDY GROUP - [HTTPS://T.ME/CCIESTUDYGROUP](https://t.me/cciestudygroup)

<https://t.me/learningnets>

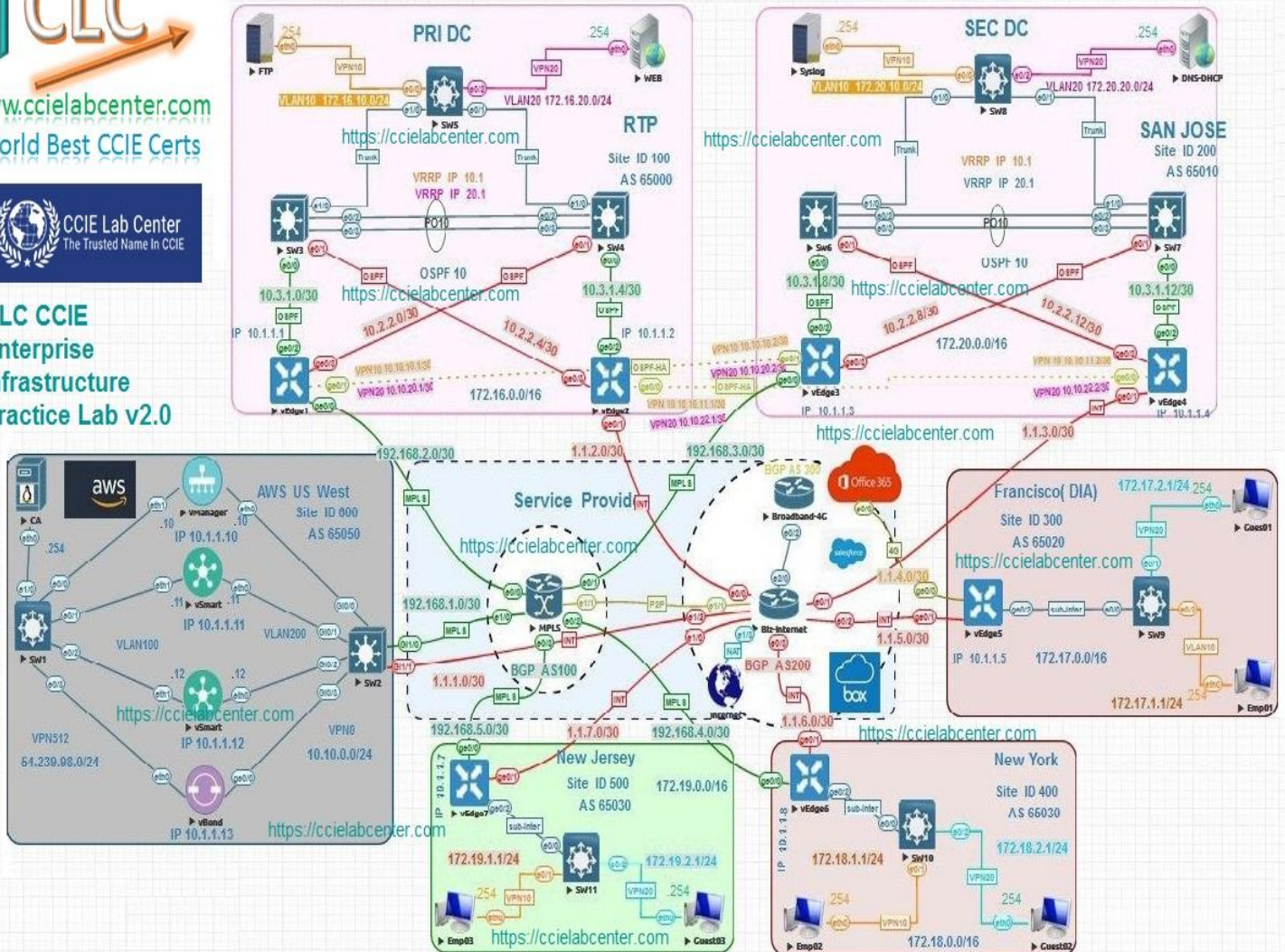
CCIE Lab Center



www.ccielabcenter.com
World Best CCIE Certs



CLC CCIE
Enterprise
Infrastructure
Practice Lab v2.0



CCIE Lab Center

100% Real | 100% Pass
Visit ccielabcenter.com