

82. When creating a port group in FusionCompute, setting the VLAN ID to 10 represents which of the following statements? (Multiple choices)
- A. Forward packets after passing the label with VLAN 10 in this port group (Right Answers)
 - B. After VLAN 10 packets are tagged on packets that have not been tagged with VLAN tags through this port group (Right Answers)
 - C. Drop packets with non-VLAN 10 tags passing through this port group (Right Answers)
 - D. After the packet with the non-VLAN 10 tag passed through this port group is changed to VLAN 10 and forwarded

Answer: ABC

81. The following tools used for information collection and health check in FusionSphere are as follows:

- A. FusionSphere SOI
- B. FusionCare (Right Answers)
- C. UpdateTool
- D. FusionManager
- E. FusionCompute

Answer: B

80. In FusionCompute, hosts can be added in batches. All host information needs to be set in the template and imported at one time.

- A. True (Right Answers)
- B. False

Answer: A

79. When a fault is encountered in FusionSphere, which of the following processing order is correct?

- A. Information Collection - Fault Diagnosis - Fault Location - Troubleshooting (Right Answers)
- B. Fault Diagnosis - Information Collection - Fault Location - Troubleshooting
- C. Fault Diagnosis - Fault Location - Information Collection - Troubleshooting
- D. Information Collection - Fault Location - Fault Diagnosis - Troubleshooting

Answer: A

78. In FusionCompute, if multiple virtual machines use the same shared disk, data may be lost if data is written at the same time. If you use a shared disk, you need to ensure that the application software controls access to the disk.

- A. True (Right Answers)
- B. False

Answer: A

77. In FusionCompute, what is the correct order to use IP SAN type storage?

1. Add storage resources
 2. Add a storage interface on the host
 3. Add data storage
 4. Create a disk
- A. 1-2-3-4
 - B. 1-3-4-2
 - C. 2-1-3-4 (Right Answers)
 - D. 4-2-1-3

Answer: C

76. Which of the following are features of FusionSphere? (Multiple choices)

- A. Apply on-demand resources (Right Answers)
- B. Widely compatible with various hardware and software (Right Answers)
- C. Automatic scheduling (Right Answers)
- D. Rich Operations Management (Right Answers)

Answer: ABCD

75. In FusionSphere, what type of network device can the gateway address of the virtual machine be set on?

- A. Layer 3 switch (Right Answers)
- B. Layer 2 switch
- C. Virtual Switch
- D. One layer of physical equipment

Answer: A

74. In Huawei FusionSphere, the resources of the cluster are mainly composed of hosts that are included, and the storage and network resources associated with the hosts also belong to the cluster.

- A. True (Right Answers)
- B. False

Answer: A

73. The memory swap in FusionCompute refers to the virtual storage of external memory to a virtual machine, and the temporarily unused data on the virtual machine is stored on the external storage. When the system needs to use this data, it is exchanged with the data reserved in memory.

- A. True
- B. False (Right Answers)

Answer: B

72. When VMs are hot migrated in FusionCompute, what conditions must be met by VMs and hosts?

- A. The running status of the virtual machine is "stopped"
- B. The source host and target host network are connected (Right Answers)
- C. The running status of the virtual machine is "running" (Right Answers)
- D. The source and target hosts use the same shared storage (Right Answers)

Answer: BCD

71. What network capabilities can VPC provide? (Multiple choices)

- A. Elastic IP (Right Answers)
- B. Security group (Right Answers)
- C. VLB (Right Answers)
- D. Virtual Routing Function (Right Answers)

Answer: ABCD

70. In FusionCompute, what is the incorrect way to create a template?

- A. The virtual machine is converted to a template
- B. Snapshots to Templates (Right Answers)
- C. Cloning a virtual machine as a template
- D. Template cloning as a template

Answer: B

69. In FusionCompute, under the "VLAN Pool" menu, which of the following operations can be implemented?
- A. In the same DVS, add 10 VLAN pools, and each VLAN pool has the same VLAN ID
 - B. Add 1 VLAN pool under DVS, and the starting VLAN ID of the VLAN pool is set to 100 (Right Answers)
 - C. Add 1 VLAN pool under DVS, and the starting VLAN ID of the VLAN pool is set to 0
 - D. Add 1 VLAN Pool under DVS, and the End VLAN ID of VLAN Pool is set to 4096

Answer: B

68. What are the ways in which administrators log in to virtual machines in Huawei FusionSphere?
- A. If the operating system of the VM is windows, the administrator can log in to the VM through Remote Desktop. (Right Answers)
 - B. If the operating system of the VM is Linux, the administrator can log in to the VM through Remote Desktop. (Right Answers)
 - C. Administrators can log in through the VUC to install a virtual machine that is running an operating system (Right Answers)
 - D. The virtual machine does not have an IP address, and the administrator can also log in via VNC. Therefore, VNC is not reliant on the network.

Answer: ABC

67. In FusionCompute, Tools is the driver for the VM. After the bare VM is created and the operating system is installed, tools provided by Huawei must be installed on the VM to improve the I/O processing performance of the VM and implement the VM. Hardware monitoring and other advanced features. Tools are independent of the operating system type and version used by the virtual machine.
- A. True
 - B. False (Right Answers)

Answer: B

66. In FusionSphere, which of the following is a description of VM hot migration?
- A. Different source CPUs from different vendors do not affect hot migration (Right Answers)
 - B. Memory compression transmission technology used to improve migration efficiency
 - C. During the VM migration, user services will not be interrupted
 - D. Migrate virtual machines within and between clusters

Answer: A

65. Which of the following concepts belong to the FusionSphere Virtualization Network? (Multiple choices)
- A. vNIC (Right Answers)
 - B. DVS (Right Answers)
 - C. Uplink (Right Answers)
 - D. Port group (Right Answers)

Answer: ABCD

64. In the cloud computing, what is the so-called east-west traffic of the data center? (Multiple choices)
- A. Interactive traffic between multiple data centers (Right Answers)
 - B. Data center-to-user traffic
 - C. Data Center internal interactive traffic (Right Answers)
 - D. Data Center External Traffic

Answer: AC

63. In FusionCompute, configure the IMC model can ensure that the host within a cluster to the virtual machine to provide the same CPU function set, even if the host of the actual CPU model is different, also won't because the CPU is not compatible with the virtual machine failure caused by migration.
- A. True (Right Answers)
 - B. False

Answer: A

62. In FusionCompute for virtual machine cloning, which conditions must be cloned for the virtual machine? (Multiple choice)
- A. The virtual machine ID for the cloned virtual machine has been obtained
 - B. When cloning virtual machine online, only one virtual machine can be cloned at one time. Batch cloning is not supported.
 - C. The virtual machine has tools and the tools are running normally (Right Answers)
 - D. The disk of the virtual machine must be created on the virtualized data storage or FusionStorage, and the shared disk cannot be mounted (Right Answers)

Answer: CD

61. The following statements about VNC, which are correct? (Multiple choices)
- A. VNC needs to support Linux operating system
 - B. VNC is a lightweight remote control computer software (Right Answers)
 - C. The controlled computer needs to install the corresponding software as VNC server (Right Answers)
 - D. Hosts that initiate control requests need to install the corresponding software as VNC server

Answer: BC

60. Which of the following are not the default roles in FusionManager system?
- A. administrator
 - B. operator
 - C. super_administrator (Right Answers)
 - D. user
 - E. auditor

Answer: C

59. In Huawei FusionSphere, when add shared storage for multiple hosts, which of the following operations are correct? (Multiple choices)
- A. When the shared storage type is IP SAN, ensure that the host storage network and the storage service interface are connected. (Right Answers)
 - B. Check the corresponding host when add data store (Right Answers)
 - C. Check all hosts when associating storage devices
 - D. Check all hosts when initializing storage resources

Answer: AB

58. The description of HA in Huawei FusionSphere, which is wrong?
- A. This function support automatic restart after virtual machine failure.
 - B. If the virtual machine data is stored in shared storage, unsaved data will not be lost if failure occurs. (Right Answers)
 - C. The system periodically detects the status of the virtual machine. When the failure of the physical server causes the failure of the virtual machine, the system will migrate the virtual machine to another physical server and restart it to ensure that the virtual machine can recover quickly.
 - D. The current system can detect the cause of virtual machine failures, including physical hardware failures and operating system failures.

Answer: B

57. Virtualization is a kind of resource management technology. It abstracts and converts various physical resources, such as servers, networks, memory and storage. It breaks the uncuttable barriers between the physical structures and it allows users to apply these resources better than the original configuration.
- A. True (Right Answers)
 - B. False

Answer: A

56. The CPU source reservation in the FusionCompute refers to the highest computing capacity that the virtual machine can obtain. The CPU source limit refers to the minimum computing capacity that the virtual machine can obtain.
- A. True
 - B. False (Right Answers)

Answer: B

55. In FusionCompute, set the host failure control policy to "intra-virtual machine cluster recovery". After a host in the cluster fails, the virtual machine on this host will automatically migrate to other hosts in the cluster.
- A. True
 - B. False (Right Answers)

Answer: B

54. FusionSphere installation includes tool installation and manual installation.
- A. True (Right Answers)
 - B. False

Answer: A

53. Create a virtual machine in FusionSphere. Which is correct statement about the network card of virtual machine?

- A. There is a fundamental difference between virtual network card and physical network. A virtual network card does not require MAC address.
- B. In the virtualized network, the MAC address and IP address of the virtual network card can be manually specified. **(Right Answers)**
- C. In the virtualized network, the MAC address and IP address of the virtual network card are automatically assigned by the VRM.
- D. In the virtualized network, the IP address of the virtual network card needs to be manually specified

Answer: B

52. In FusionCompute, which is the correct about IO ring?

- A. The main purpose of turning on I/O ring is maximize the performance of the storage device. **(Right Answers)**
- B. In the same cluster, administrators can turn on I/O ring function for some hosts according to their needs.
- C. In the same cluster, administrators can turn on I/O rings for some virtual machine according to their needs.
- D. Immediately after the I/O ring function is enabled in the same cluster

Answer: A

51. The function of the operation log in FusionSphere is to supervise the operation of the administrator in real time to ensure the security of the system.

- A. True
- B. False **(Right Answers)**

Answer: B

50. When add storage resource to Huawei FusionCompute, select the resource "Advanced SAN", you must set the storage multipath type to "Huawei".

- A. True **(Right Answers)**
- B. False

Answer: A

49. In FusionCompute, which functions can be enabled by the user to improve the I/O performance of large, multi-queue of IO-intensive services?

- A. Cluster I/O ring adaptation **(Right Answers)**
- B. Cluster HANA optimization
- C. Cluster GuestNUMA policy
- D. Cluster IMC strategy

Answer: A

48. Which does not support data storage of disk expansion in FusionCompute?

- A. Local hard disk **(Right Answers)**
- B. Virtualized SAN storage
- C. NAS storage
- D. FusionStorage

Answer: A

47. Use the existing template in the FusionCompute to create virtual machine that is consistent with the template specifications to implement the rapid deployment of virtual machines.

- A. True **(Right Answers)**
- B. False

Answer: A

46. Which of the following functions is provided by CNA in FusionCompute? (Multiple choices)

- A. Manage the dynamic adjustment of resources within the cluster.
- B. Provide virtual computing capabilities **(Right Answers)**
- C. Manage the virtual machines on the compute nodes. **(Right Answers)**
- D. Manage computing, storage and network resources on the compute nodes. **(Right Answers)**

Answer: BCD

45. The QoS function of FusionCompute does not support the traffic limitation between virtual machines in the same host.

- A. True
- B. False (Right Answers)

Answer: B

44. Huawei FusionCompute CPU QoS features, which parameters can be configured? (Multiple choices)

- A. Shares (Right Answers)
- B. Percentage
- C. Reserve (Right Answers)
- D. Limitations (Right Answers)

Answer: ACD

43. What are the ways to implement memory reuse in Huawei FusionSphere?

- A. Memory replacement (Right Answers)
- B. Memory increased
- C. Memory sharing (Right Answers)
- D. Memory bubbles (Right Answers)

Answer: ACD

42. Which is the correct relationship between the physical switch port mode and the port group type in the FusionCompute?

- A. Common access port group for physical switches (Right Answers)
- B. Common trunk corresponding to the port group for physical switches
- C. access of the physical switch to the port group
- D. trunk of the physical switch trunk corresponding to the port group (Right Answers)

Answer: AD

41. What is the typical procedure for an administrator add storage to host in FusionCompute?

- A. Add Host Storage Interface -> Associate Storage Resource -> Scan Storage Device -> Add Data Storage (Right Answers)
- B. Associating Storage Resources -> Add Host Storage Interface -> Scan Storage Device -> Add Data Storage
- C. Add Data Storage -> Add Host Storage Interface -> Associate Storage Resource -> Scan Storage Device
- D. Add Host Storage Interface -> Associate Storage Resources -> Add Data Storage -> Scan Storage Devices

Answer: A

40. In Huawei FusionSphere, the disk size is not automatically reduced after data is deleted inside the virtual machine. The next time the user rewrites the data, it will use these internally released spaces.

- A. True (Right Answers)
- B. False

Answer: A

39. The description of the production template in FusionCompute. Which is wrong?

- A. "Virtual machine to template" converts the virtual machine directly to template. All parameters are currently configured use this virtual machine. The virtual machine will no longer exist after conversion
- B. The "virtual machine cloning to template" is copy the virtual machine as template and support adjustment of some parameter configurations, which may be slightly different from the original virtual machine. The virtual machine can still be used normally after cloning is completed
- C. "Template cloning to template" is copy the template as a new template and support adjustment of some parameter configuration. It can be slightly different from the original template. The original template still exists after cloning is complete.
- D. When use virtual machine to create a template, the status of the virtual machine can be "running" (Right Answers)

Answer: D

38. Which of the following statements about Huawei virtual switch are correct?

- A. Huawei Virtual Machine Switch is Open Source Open vSwitch
- B. Huawei Distributed Switch has multiple virtual ports. Each port has its own attribute (Right Answers)
- C. Huawei virtual switches are divided into standard virtual switches and distributed virtual switches
- D. The virtual switch function of the intelligent network card is also provided by the Huawei virtual switch.

Answer: B

37. In FusionSphere, which is correct about the communication between virtual machines?

- A. The two virtual machine that belong to the same port group on the network card communicate with each other without going through the physical network.
- B. Two virtual machines running on the same host communicate with each other without going through the physical network
- C. The two virtual machines running on the same host and the network card belong to the same port group do not need to pass through the physical network (Right Answers)
- D. Two virtual machines running on the same host and the network card do not belong to the same port group communicate with each other without going through the physical network

Answer: C

36. The snapshot feature of the FusionCompute, which is correct? (Multiple choices)

- A. A virtual machine can create up to 8 snapshots. The created snapshots can only be manually deleted.
- B. The storage type of the virtual machine disk is advanced SAN storage, FusionStorage, virtualized local hard disk, virtualized SAN storage or when the NAS is stored, the virtual machine supports the snapshot function. (Right Answers)
- C. If virtual machine is set to Slave, the snapshot is not taken when the snapshot is created
- D. Can't operate virtual machine during online incremental snapshot creation (Right Answers)

Answer: BD

35. When use template to deploy virtual machine in FusionCompute, you need to implement the following requirements: When you create snapshot for virtual machine, the data of the disk is not taken snapshot. When you use the snapshot to restore virtual machine, the data on the disk is not restored. At the same time, you want all Virtual machine data is permanently written to disk. Which disk mode should you choose?

- A. Dependent
- B. Independence
- C. Independence - Durable (Right Answers)
- D. Independent - Non-durable

Answer: C

34. Which are the limitations of storage device raw device mapping in FusionCompute? (Multiple choice)

- A. Does not support linked cloning (Right Answers)
- B. Does not support storage thin provisioning (Right Answers)
- C. Does not support storing incremental snapshots (Right Answers)
- D. Can't be used as a shared disk

Answer: ABC

33. Which device in the traditional network corresponds to DVS in Huawei FusionSphere?

- A. Splitter
- B. Layer 3 switch
- C. Layer 2 switch (Right Answers)
- D. Hub

Answer: C

32. After FusionCompute is deployed, a user virtual machine on host computer can log in VNC window but can't operate properly and is stuck (can't click to open file, etc.). The host has three network ports, which connect management, service and storage these three different network planes. Which is the most likely cause of the failure?

- A. Management link interruption
- B. Service link interruption
- C. Storage link interruption (Right Answers)
- D. The virtual machine is damaged

Answer: C

31. In the FusionSphere server virtualization solution, if the server has a small number of physical network adapters, consider merging multiple planes and logically isolate the planes through VLANs. For example, the service plane and the management plane share the same physical network card but use different VLANs for isolation.

- A. True (Right Answers)
- B. False

Answer: A

30. After the VRMs are deployed by host and backup, FusionCompute can be accessed through the floating IP address. If the network is normal, the floating IP address is always inaccessible. Which of the following is the most likely point of failure?

- A. VRM master node fails
- B. VRM standby node fails
- C. There is a problem with one of the VRM master nodes or standby nodes
- D. Both the host and backup VRM nodes are faulty (Right Answers)

Answer: D

29. In FusionCompute, when the administrator checks the disk status, the administrator finds that the actual capacity is smaller than the capacity. What causes this phenomenon?

- A. The disk type is "shared"
- B. The disk mode is "simplification" (Right Answers)
- C. The disk status is "unavailable"
- D. The disk mode is "slave"

Answer: B

28. In Huawei FusionSphere, the thin provisioning of virtualized storage is completely independent of the operating system and hardware. Therefore, as long as the virtual mirroring management system is used, the virtual storage thin provisioning function can be provided.

- A. True (Right Answers)
- B. False

Answer: A

27. In Huawei FusionSphere, what is wrong about the description of raw device mapping?

- A. Disk performance is good using raw device mapping
- B. A data store that uses raw device mapping can only correspond to one disk
- C. The operating system is recommended to be installed on a disk that uses raw device mapping (Right Answers)
- D. A data store that uses raw device mapping can only correspond to a LUN on the SAN storage

Answer: C

26. Through FusionSphere's memory reuse technology, the total memory used by all virtual machines on the entire physical server can exceed the total physical memory of the server.

- A. True (Right Answers)
- B. False

Answer: A

25. What is service model of cloud computing for the basic resources such as rental processing capacity, storage space, and network capacity?

- A. Infrastructure as a Service (IaaS) (Right Answers)
- B. Platform as a Service (PaaS)
- C. Software as a Service (SaaS)
- D. Data as a Service (DaaS)

Answer: A

24. In FusionCompute, you need to modify a disk of a VM. Which of the following operations can be implemented?

- A. Change the disk configuration mode from simplification to normal
- B. Change the mode of the disk from slave to standalone - persistent (Right Answers)
- C. Change the capacity of the disk from 80G to 8G
- D. Modify the status of the disk from available to unavailable

Answer: B

23. Which of the following does not belong to the VM thermal migration limitations in FusionCompute?

- A. Does not support the migration of mounted disks of "shared" type and the disk of linked clone virtual machines
- B. Does not support non-persistent disks and the migration of VM disks enabled iCache function
- C. Does not support the thermal migration of virtual machines with a status of "faulty"
- D. Does not support the thermal migration of virtual machines with a status of "running" (Right Answers)

Answer: D

22. About the descriptions of the storage-related concepts in Huawei FusionSphere, which is wrong?

- A. A physical storage device can be used as a storage resource
- B. The storage device corresponds to a logical unit in the physical storage, such as a LUN
- C. The capacity of data storage cannot be increased or decreased (Right Answers)
- D. VHD is a virtual machine disk file format

Answer: C

21. In Huawei cloud computing, which of the following technology does the VPC's network security isolation function not rely on?

- A. Hardware firewall
- B. Software firewall
- C. Switch
- D. Elastic IP (Right Answers)

Answer: D

20. What are the ways to deploy virtual machines on the FusionCompute?

- A. Copy
- B. Template conversion (Right Answers)
- C. Create directly (Right Answers)
- D. Cloning (Right Answers)

Answer: BCD

19. A snapshot in FusionSphere is a record of the data and status of a VM disk at a certain time. Which of the following scenarios applies to the snapshot? (Multiple Choices)

- A. Create a snapshot for the VM before patching the VM operating system (Right Answers)
- B. Create a snapshot of the virtual machine where the application resides before upgrading the application (Right Answers)
- C. Create a snapshot of the virtual machine before deleting the virtual machine
- D. Create a snapshot of the virtual machine before shutting it down

Answer: AB

18. What are the correct descriptions of port groups in FusionSphere? (Multiple Choices)

- A. Port group is a kind of policy mechanism. These policies are used to manage the network connected to the port group. (Right Answers)
- B. A port group is a distributed virtual switch
- C. The virtual port contained in the port group has the same attributes (Right Answers)
- D. There are two types of ports in the port group, they are normal and relay. (Right Answers)

Answer: ACD

17. In FusionCompute, you can view which port of the DVS is connected to the VM.

- A. True (Right Answers)
- B. False

Answer: A

16. In FusionSphere, the type of a disk is "shared". What are the correct statements about this disk? (Multiple Choices)

- A. This disk can only be bound to one virtual machine
- B. This disk can be bound to multiple virtual machines (Right Answers)
- C. The virtual machine on which this disk is mounted does not support full thermal migration (Right Answers)
- D. The virtual machine on which this disk is mounted does not support Snapshot function

Answer: BC

15. FusionCompute can perceive the use of global physical resources during the running of a virtual machine and use intelligent scheduling algorithms to calculate the optimal host for virtual machine operation and run the virtual machine on the best host through hot migration and other means. This improves the overall business experience.

- A. True (Right Answers)
- B. False

Answer: A

14. In the Huawei server virtualization solution, the virtual network interface card of each virtual machine is connected to the port of the virtual switch. To facilitate the configuration and management of multiple ports at the same time, ports with the same network attributes are distributed to the same port group.

- A. True (Right Answers)
- B. False

Answer: A

13. Create a new disk in FusionCompute. Which of the following is incorrect?

- A. Set the disk type as "normal" and set the disk mode as "standalone - non-persistent"
- B. Set the disk mode as "standalone - non-persistent" and change the raw device mapping to "support" (Right Answers)
- C. Set the configuration mode of disk as "simplification" and set the disk mode as "standalone - persistent"
- D. Set the configuration mode of disk ad "simplification" and set the disk mode as "standalone - non-persistent"

Answer: B

12. It can use the physical host optical drive to install the operating system for VM in Huawei FusionSphere.

- A. True (Right Answers)
- B. False

Answer: A

11. Which of the following are the virtual exchange modes provided by Huawei virtual switches in FusionSphere?

- A. Normal Mode (Right Answers)
- B. Through Mode (Right Answers)
- C. SR-IOV through Mode (Right Answers)
- D. VF-TRUNK

Answer: ABC

10. Cloud computing is defined as a model, not just as a technology. This model can be either a business model or a service model.

- A. True (Right Answers)
- B. False

Answer: A

9. In FusionCompute, clonal VMs and cloned VMs have the same configuration at the time of cloning, but they do not have the same data.

- A. True
- B. False (Right Answers)

Answer: B

8. It can set the MTU value as 10000 in FusionCompute networking pool.

- A. True
- B. False (Right Answers)

Answer: B

7. Where can be the DRS function enable on the FusionCompute?

- A. Cluster (Right Answers)
- B. Host
- C. Virtual Machine
- D. Operating System

Answer: A

6. When creating a port group in FusionCompute, which of the following operation is wrong?

- A. Set the name of the port group as "ceshi"
- B. Set the port type as "Normal"
- C. Set VLAN ID as "5000" (Right Answers)
- D. Add "This is a test port" in the description

Answer: C

5. In FusionSphere, each VM can have multiple virtual network interface cards.

- A. True (Right Answers)
- B. False

Answer: A

4. In Huawei FusionSphere, what kind of storage resource is added to a host, then one disk of a VM corresponds to one LUN in the storage? (Multiple Choices)

- A. FusionStorage (Right Answers)
- B. Advanced SAN (Right Answers)
- C. FC-SAN
- D. IP-SAN

Answer: AB

3. When installing FusionCompute, which of the following is the proper order of installation?

- A. First install the VRM on a physical server, and then add the host through VRM. After the host is added successfully, it is the CNA host.
- B. Install the CNA host first, then install the Installer on the CNA host and install the VRM through the Installer
- C. Install the Installer on the PC first, then install the CNA host and VRM through the Installer (Right Answers)
- D. Use mirroring to install the server as a CNA host, and then use commands to create a VRM virtual machine on the host.

Answer: C

2. The administrator adds a storage interface to the host in FusionCompute to achieve the docking of host and storage device. Which of the following storage types do not need to add a storage interface? (Multiple Choices)

- A. FC-SAN storage (Right Answers)
- B. IP-SAN storage
- C. Local hard disk (Right Answers)
- D. Local memory disk (Right Answers)

Answer: ACD

1. In Huawei FusionSphere, a new snapshot is created for the VM. This snapshot can save information about all disks of the VM.

- A. True
- B. False (Right Answers)

Answer: B

109. In Huawei FusionSphere, which of the following statements about the hot migration of VM storage is incorrect?

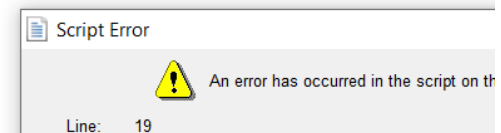
- A. Storage hot migration can be performed between different data stores
- B. Storage hot migration can be performed between different storage resources
- C. Storage hot migration can be performed between different storage devices
- D. Storage hot migration is limited to different storage resources (Right Answers)

Answer: D

374. Which of the following licensing mode does FusionAccess desktop cloud solution include? (Multiple Choice)

- A. Number of users (Right Answers)
- B. Number of concurrent users (Right Answers)
- C. Number of virtual desktops
- D. Number of physical servers

Answer: AB



373. Huawei cloud computing software can be pre-deployed on specific hardware, and the software and hardware are combined to form an all-in-one machine and sold to customers. Which of the following Huawei servers support the all-in-one deployment mode? (Multiple Choice)

- A. E9000 (Right Answers)
- B. RH5885
- C. RH2288H (Right Answers)
- D. X8000

Answer: AC

372. What are the main functions of FusionAccess? (Multiple Choice)

- A. Asset management, managing the relationship between users and virtual machines (Right Answers)
- B. User access, users can view and operate their own virtual machine (Right Answers)
- C. Desktop transfer, using virtual machine through desktop link protocol (Right Answers)
- D. Resource scheduling, management scheduling, cloud platform computing, storage resources

Answer: ABC

371 . What are the key features of cloud computing? (Multiple Choice)

- A. On-demand self-service (Right Answers)
- B. Location-independent resource pool (Right Answers)
- C. Pay by usage (Right Answers)
- D. Rapid flexibility (Right Answers)

Answer: ABCD

370 . What are the implementation method of storage virtualization? (Multiple Choice)

- A. bare device + logical volume
- B. Storage device virtualization
- C. Host Storage Virtualization + File System
- D. Host storage

369 . Which of the following types of networks can be used in a VPC? (Multiple Choice)

- A. Direct network (Right Answers)
- B. Routing network (Right Answers)
- C. Internal network (Right Answers)
- D. Closed network

Answer: ABC

368 . Which of the following modules belong to the component of controller enclosure of the OceanStor 5800 v3 storage device? (Multiple Choice)

- A. Power module (Right Answers)
- B. Management module (Right Answers)
- C. Disk module
- D. Interface module (Right Answers)

Answer: ABD

367 . Which of the following descriptions are correct about the affinity adjustment of FusionCompute based on NUMA architecture? (Multiple Choice)

- A. When the virtual machine resources are allocated, the hardware NUMA architecture is perceived, and the resources in the same Node are preferentially selected. (Right Answers)
- B. When the resources required by a virtual machine cannot be provided by one Node, the virtual machine resource allocation fails.
- C. Resource allocation dynamic adjustment, not static setting (Right Answers)
- D. Allocate Node resources with close distance according to the principle of proximity

Answer: AC

366 . What are the factors that contribute to the generation of cloud computing? (Multiple Choice)

- A. Demand push (Right Answers)
- B. Technological progress (Right Answers)
- C. Business model shift (Right Answers)
- D. Industry change

Answer: ABC

365 . What aspects of virtualization does computing virtualization technology include? (Multiple Choice)

- A. CPU virtualization **(Right Answers)**
- B. Memory virtualization **(Right Answers)**
- C. Hard disk virtualization
- D. IO virtualization **(Right Answers)**

Answer: ABD

364 . Which of the following descriptions of Huawei S series box switch stacks are correct? (Multiple Choice)

- A. Only switches of the same model can be stacked **(Right Answers)**
- B. Different sub-series switches implement different stacking methods. **(Right Answers)**
- C. Some switches do not support stacking. **(Right Answers)**
- D. All series of switches support stacking

Answer: ABC

363 . In the cloud data center, what are the virtual hardware of the business host? (Multiple Choice)

- A. CPU **(Right Answers)**
- B. Memory **(Right Answers)**
- C. Hard disk **(Right Answers)**
- D. Network card **(Right Answers)**

Answer: ABCD

362 . What are the reliability of the FusionInsight system? (Multiple Choice)

- A. No single point of failure in the business **(Right Answers)**
- B. Management node HA **(Right Answers)**
- C. Cross-DC disaster recovery/backup **(Right Answers)**
- D. Third-party backup system integration **(Right Answers)**

Answer: ABCD

361 . What are the virtual hardware involved in creating a virtual machine? (Multiple Choice)

- A. CPU **(Right Answers)**
- B. Memory **(Right Answers)**
- C. Hard disk **(Right Answers)**
- D. Network card **(Right Answers)**

Answer: ABCD

360 . What devices and systems can Huawei manage with unified management technology? (Multiple Choice)

- A. Network security equipment **(Right Answers)**
- B. Storage and server **(Right Answers)**
- C. Virtualization resources **(Right Answers)**
- D. Application software

Answer: ABC

359 . What are the business models of cloud computing? (Multiple Choice)

- A. IaaS **(Right Answers)**
- B. PaaS **(Right Answers)**
- C. SaaS **(Right Answers)**
- D. DaaS

Answer: ABC

358 . Which of the following descriptions are correct about the functions of the FusionManager core components? (Multiple Choice)

- A. UHM is a unified hardware management component responsible for heterogeneous hardware monitoring **(Right Answers)**
- B. IRM is an integrated resource management component responsible for heterogeneous virtualized resource management **(Right Answers)**
- C. Fault Service provides alarm query management **(Right Answers)**
- D. AME is an application management engine component responsible for application automation management **(Right Answers)**

Answer: ABCD

357 . What are the main features of the E9000 server? (Multiple Choice)

- A. Flexible networking **(Right Answers)**
- B. High computational density **(Right Answers)**
- C. High storage density **(Right Answers)**
- D. Computing, storage and network convergence **(Right Answers)**

Answer: ABCD

356 . Which of the following parameters can be selected and set when using FusionAccess to issue a virtual machine? (Multiple Choice)

- A. Virtual machine specifications **(Right Answers)**
- B. Virtual machine network **(Right Answers)**
- C. Virtual machine disk **(Right Answers)**
- D. Virtual machine naming rules **(Right Answers)**

Answer: ABCD

355 . What is Huawei desktop cloud solution consist of? ((Multiple Choice)

- A. FusionAccess **(Right Answers)**
- B. FusionSphere **(Right Answers)**
- C. FusionInsight
- D. TC terminal **(Right Answers)**

Answer: ABD

- 354 . To monitor the server on the FusionManager, you need to use SNMP or SSH. Therefore, what basic information should you collect before accessing the server? (Multiple Choice)
- A. Server IP address (Right Answers)
 - B. Server's SNMP port number (Right Answers)
 - C. Server SSH username and password (Right Answers)
 - D. SNMP version number (Right Answers)

Answer: ABCD

- 353 . FusionCompute uses storage thin provisioning to improve storage utilization and reduce storage costs. If 120GB of physical storage is configured with 4 virtual machines, which of the following virtual machine disk capacity allocation schemes are feasible? (Unit GB, temporarily do not consider the actual storage situation) (Multiple Choice)
- A. 10:20:30:40 (Right Answers)
 - B. 10:100:20:200 (Right Answers)
 - C. 120:120:120:120 (Right Answers)
 - D. 30:30:30:30 (Right Answers)

Answer: ABCD

- 352 . What are the restrictions on raw device mapping of storage resources in FusionCompute? (Multiple Choice)
- A. Linked clones are not supported (Right Answers)
 - B. does not support storage thin provisioning (Right Answers)
 - C. Storage incremental snapshots are not supported (Right Answers)
 - D. Storage hot migration is not supported (Right Answers)

Answer: ABCD

- 351 . Huawei can provide cloud computing solution from end-to-end and from software to hardware. Which of the following hardware components are optional in Huawei cloud computing solution? (Multiple Choice)
- A. Server
 - B. Load balancing device (Right Answers)
 - C. Firewall (Right Answers)
 - D. TC thin terminal (Right Answers)

Answer: BCD

- 350 . Which resources can FusionCompute perform QoS control on? (Multiple Choice)
- A. CPU (Right Answers)
 - B. Memory (Right Answers)
 - C. Network (Right Answers)
 - D. Storage (Right Answers)

Answer: ABCD

- 349 . The OceanStor 5800 v3 storage device adopts full redundancy design. Which modules are mainly redundant? (Multiple Choice)
- A. Controller (Right Answers)
 - B. Fan (Right Answers)
 - C. Power supply (Right Answers)
 - D. BBU (Right Answers)

Answer: ABCD

- 348 . What are the main features of the FusionAccess virtual application component SBC? (Multiple Choice)
- A. A solution for publishing applications that makes application virtualization (Right Answers)
 - B. Support centralized control and management in the data center, can be published as a service anywhere, without requiring users to install the application locally (Right Answers)
 - C. The application eventually runs on the backend server, which borrows the Windows Server terminal service mechanism to create a session for each access user. (Right Answers)
 - D. The application displays the published application through the web interface, and the user can directly click and use (Right Answers)

Answer: ABCD

- 347 . In the cloud data center, what types of virtual switching technologies do virtual machines include? (Multiple Choice)
- A. Software-based virtual switch (Right Answers)
 - B. Virtual switch based on intelligent network card (Right Answers)
 - C. Virtual switch based on physical switch (Right Answers)
 - D. Virtual switch based on InfiniBand network card

Answer: ABC

346 . When deploying Huawei cloud computing solutions, what aspects of the previous planning and design are generally involved? (Multiple Choice)

- A. Architecture design (Right Answers)
- B. Component design (Right Answers)
- C. Network design (Right Answers)
- D. Storage design (Right Answers)

Answer: ABCD

345 . Which of the following descriptions are correct about the virtual memory of the virtual machine? (Multiple Choice)

- A. VMM needs to save the mapping relationship between physical memory address and virtual memory address.
- B. The use of virtual memory is the same as the use of physical memory, you can use it without conversion. (Right Answers)
- C. Physical memory can be divided into multiple memory blocks, and each virtual machine is allocated only one virtual memory block. (Right Answers)
- D. The virtual memory address and the physical memory address are one-to-one correspondence. After using the memory multiplexing technology, the amount of available virtual memory is less than or equal to the amount of physical memory. (Right Answers)

Answer: BCD

344 . Which of the following components are open source components used by FusionInsight? (Multiple Choice)

- A. HDFS (Right Answers)
- B. Manager
- C. HBase (Right Answers)
- D. Hive (Right Answers)

Answer: ACD

343 . What are the reliability of FusionInsight data? (Multiple Choice)

- A. Cross-data center data backup (Right Answers)
- B. Third-party backup system integration (Right Answers)
- C. Fast fault detection (Right Answers)
- D. Online disk replacement online (Right Answers)

Answer: ABCD

342 . Which of the following descriptions is wrong about Huawei FusionCube?

- A. FusionCube integrates computing, storage, network, virtual platform, database and application software to achieve one-stop solution
- B. The core of the FusionCube Fusion is distributed computing software (FusionCompute + FusionManager + FusionStorage).
- C. FusionCube is a Huawei-developed solution from the underlying hardware to the upper-layer distributed cloud computing software, providing end-to-end thin management deployment.
- D. FusionCube virtualizes multiple external SAN storages to provide distributed high-performance storage pools to solve IO performance bottlenecks (Right Answers)

Answer: D

341 . What are the deployment models for cloud computing? (Multiple Choice)

- A. Public cloud **(Right Answers)**
- B. Private cloud **(Right Answers)**
- C. Government Cloud
- D. Hybrid cloud **(Right Answers)**

Answer: ABD

340 . What are the display interfaces supported by the TC thin terminal devices used in Huawei cloud computing solutions? (Multiple Choice)

- A. DVI **(Right Answers)**
- B. HDMI
- C. VGA **(Right Answers)**
- D. PCI-E

Answer: AC

339 . In the Huawei cloud computing solution, which of the following components can be deployed on a physical machine or on a virtual machine? (Multiple Choice)

- A. CAN
- B. VRM **(Right Answers)**
- C. FusionManager **(Right Answers)**
- D. VSAM

Answer: BC

338 . What are the types of mainstream virtualization architectures in the industry? (Multiple Choice)

- A. Hosting virtualization **(Right Answers)**
- B. Bare metal virtualization **(Right Answers)**
- C. Full virtualization
- D. Operating system virtualization **(Right Answers)**

Answer: ABD

337 . Which of the following description is wrong about VxLAN? (Multiple Choice)

- A. Realize decoupled configuration of virtual network and physical switch
- B. Does not support network equipment utilization **(Right Answers)**
- C. Maximum support 4K virtual network identifiers VNI **(Right Answers)**
- D. Realize virtual machine migration across physical Layer 3 networks

Answer: BC

336 . What are the participants in the cloud computing industry? (Multiple Choice)

- A. Cloud service provider **(Right Answers)**
- B. Cloud device provider **(Right Answers)**
- C. Cloud users **(Right Answers)**
- D. Cloud Service Developer

Answer: ABC

335 . Huawei cloud computing solutions use a variety of different network virtualization technologies. Which of the following descriptions are correct? (Multiple Choice)

- A. Ordinary virtual network card must be handled by Domain0 network I / O activities **(Right Answers)**
- B. VMDq supports lossless thermal migration **(Right Answers)**
- C. VMDq NIC throughput is better than SR-IOV
- D. In SR-IOV technology scenario, support hot migration, snapshot

Answer: AB

334 . Which types of networking isolation can FusionInsight achieve? (Multiple Choice)

- A. Work node isolation
- B. Cluster business plane **(Right Answers)**
- C. Cluster management plane **(Right Answers)**
- D. Out-of-cluster maintenance network **(Right Answers)**

Answer: BCD

333 . Which of the following technologies belong to the cloud computing technology system? (Multiple Choice)

- A. Virtualization technology **(Right Answers)**
- B. Storage technology **(Right Answers)**
- C. Network technology **(Right Answers)**
- D. Distributed technology **(Right Answers)**

Answer: ABCD

332 . The cloud computing environment concentrates data in the cloud data center, bringing all-round security to customers. What are the main aspects? (Multiple Choice)

- A. Network transmission encryption **(Right Answers)**
- B. Data encryption storage **(Right Answers)**
- C. Virtual machine antivirus **(Right Answers)**
- D. Terminal access authentication **(Right Answers)**

Answer: ABCD

331 . What are the steps in the basic installation of FusionCompute? (Multiple Choice)

- A. Install the host **(Right Answers)**
- B. Install VRM **(Right Answers)**
- C. Install VSAM
- D. Install PVM

Answer: AB

330 . Which of the following descriptions are correct about the VDC and VPC in FusionManager? (Multiple Choice)

- A. VDC is the virtual resource boundary allocated to the user, which is the resource boundary that the tenant can use. (Right Answers)
- B. VPC is a virtual private cloud, which is a private network isolation area created in the VDC. (Right Answers)
- C. Multiple VPCs can be included in one VDC (Right Answers)
- D. The network in VPC is specified by the administrator, and the tenant can only use the network created by the administrator. (Right Answers)

Answer: ABCD

329 . During the installation process of FusionAccess, you need to configure the Windows OS infrastructure host. Which of the following components are installed on the Windows OS infrastructure host? (Multiple Choice)

- A. GaussDB
- B. ITA (Right Answers)
- C. HDC
- D. Logger (Right Answers)

Answer: BD

328 . What are the HA mechanism used in FusionCompute? (Multiple Choice)

- A. Centralized control HA mechanism (Right Answers)
- B. Brain splitting mechanism
- C. Differential Control HA Mechanism
- D. Cluster autonomous HA mechanism (Right Answers)

Answer: AD

327 . What are the nature of virtualization? (Multiple Choice)

- A. Partition (Right Answers)
- B. Isolation (Right Answers)
- C. Package (Right Answers)
- D. Hardware independence (Right Answers)

Answer: ABCD

326 . What information can be obtained through the northbound interface of the FusionManager? (Multiple Choice)

- A. Cluster information (Right Answers)
- B. Virtual machine information (Right Answers)
- C. Virtual network information (Right Answers)
- D. Topology information (Right Answers)

Answer: ABCD

325 . What are the two factors in the FusionAccess USBKEY authentication feature? (Multiple Choice)

- A. USBKEY hardware itself (Right Answers)
- B. Domain account
- C. User fingerprint
- D. PIN code (Right Answers)

Answer: AD

318 . Which of the following eras has the infrastructure experienced? (Multiple choice)

- A. Distributed computing
- B. Mainframe computing (Right Answers)
- C. PC era (Right Answers)
- D. The era of cloud computing (Right Answers)

Answer: BCD

317 . A company provides a variety of resources for customers to use, which of the following forms belong to IaaS? (Multiple choice)

- A. Network storage service (Right Answers)
- B. Application system
- C. Development platform
- D. bare virtual machine (Right Answers)

Answer: AD

316 . Which of the following virtual switching technologies can be implemented on the server? (Multiple choice)

- A. VxLan (Right Answers)
- B. VMDQ (Right Answers)
- C. SR-IOV (Right Answers)
- D. TRILL

Answer: ABC

315 . Which of the following categories does hardware-assisted virtualization include? (Multiple choice)

- A. Processor-assisted virtualization (Right Answers)
- B. IO-assisted virtualization (Right Answers)
- C. Network-assisted virtualization (Right Answers)
- D. Trusted Execution Technology (Right Answers)

Answer: ABCD

314 . Which of the following are the connection topologies of Huawei switch stacks? (Multiple choice)

- A. Chain connection (Right Answers)
- B. Ring connection (Right Answers)
- C. Tree connection
- D. Fully interconnection

Answer: AB

313 . What are the current products of FusionInsight? (Multiple choice)

- A.FusionInsight HD **(Right Answers)**
- B.FusionInsight Farmer **(Right Answers)**
- C.FusionInsight Miner **(Right Answers)**
- D.FusionInsight MPPDB **(Right Answers)**

Answer: ABCD

312 . Which of the following description of SPARK is correct? (Multiple Choice)

- A. High performance memory iterative computing framework **(Right Answers)**
- B. One-stop solution for memory computing **(Right Answers)**
- C. Support multi-language rapid development application **(Right Answers)**
- D. Poor performance

Answer: ABC

311 . Which CPU virtualization technology is the future development trend?

- A. Full virtualization
- B. Paravirtualization
- C. Hosting virtualization
- D. Hardware-assisted virtualization **(Right Answers)**

Answer: D

310 . Cloud computing is an Internet-based computing approach in which shared hardware and software resource pools and information can be provided to computers or other devices as needed.

- A. True **(Right Answers)**
- B. False

Answer: A

309 . Which of the following is the main data for telecom operations?

- A. Structured data (Right Answers)
- B. Unstructured data
- C. Semi-structured data
- D. Virtual structured data

Answer: A

308 . What are the main function does the FusionAccess component LoadBalance implement?

- A. Provide the end user's access interface entry
- B. Desktop access login load balancing (Right Answers)
- C. Protocol gateway for desktop access, internal and external network isolation, transmission encryption
- D. Installed in each user's virtual desktop to provide connectivity between the terminal and the virtual desktop

Answer: B

307 . The four fans of the RH2288H server support hot swap.

- A. True (Right Answers)
- B. False

Answer: A

306 . From a business perspective, which of the following is the cloud computing similar to?

- A. Gas station
- B. Water pipe
- C. Information Power Plant (Right Answers)
- D. Reservoir

Answer: C

305 . The cloud service provider installs the operating system, middleware and application software on the virtual machine, and then provides the overall resource to the user, this cloud computing business model is SaaS.

- A. True (Right Answers)
- B. False

Answer: A

304 . Which of the following descriptions of the requirements for the CPU configuration of the Huawei cloud computing solution host is wrong?

- A. Intel or AMD X86 architecture 32-bit, 64-bit CPU (Right Answers)
- B. CPU supports hardware virtualization technology
- C. Turn on virtualization in the BIOS
- D. The CPU numbers of the compute nodes in the same cluster are inconsistent.

Answer: A

303 . FusionInsight does not support user rights management.

- A. True
- B. False **(Right Answers)**

Answer: B

302 . When deploying a VRM using the FusionCompute installation wizard, you can configure the management VLAN and set the VLAN ID. If not checked, which is the default management VLAN used by VRM?

- A. the VLAN which Host management network card belongs to
- B. VLAN 0 **(Right Answers)**
- C. VLAN 1
- D. Randomly select VLAN

Answer: B

301 . Which of the following descriptions of VPC is wrong?

- A. VPC provides isolated network environment
- B. VPN can be used in VPC
- C. Security groups can be used in VPC
- D. VPC does not provide NAT service **(Right Answers)**

Answer: D

300 . FusionCube uses an innovative architecture to solve I/O performance bottlenecks. What is the architecture?

- A. Computing, network and storage integration architecture
- B. Linear expansion architecture
- C. Software and hardware integration architecture
- D. Distributed Server SAN Architecture **(Right Answers)**

Answer: D

299 . Which of the following is not part of the FusionInsight architecture?

- A.DataFarm
- B.VRM (Right Answers)
- C.Hadoop
- D.Manager

Answer: B

298 . When deploying the FusionCompute, it is recommended to deploy the active and standby VRMs directly on the physical host to improve the performance of the management node.

- A. True
- B. False (Right Answers)

Answer: B

297 . A company's cloud computing environment is built by itself, and the resources are combined into virtual desktops for the company employees to use. The usage model belongs to PaaS.

- A. True
- B. False (Right Answers)

Answer: B

296 . The desktop connection protocol HDP used by FusionAccess has more peripheral support and better multimedia performance than the RDP protocol, but its occupied bandwidth is larger than the RDP protocol.

- A. True
- B. False (Right Answers)

Answer: B

295 . A company builds an IT system and uses a virtualization platform to abstractly combine physical servers into multiple virtual servers to improve resource utilization and reduce enterprise investment costs. Which genre does the company use for cloud computing?

- A. big divide into small (Right Answers)
- B. gather more with less
- C. One virtual multiple
- D. All in one

Answer: A

294 . An enterprise is a traditional Internet data center service provider with a self-built data center. When the company is considering transitioning to the cloud computing industry, which of the following cloud computing business models are most likely to be selected?

- A. IaaS (Right Answers)
- B. PaaS
- C. SaaS
- D. DaaS

Answer: A

293 . Which of the following is not a problem faced by traditional data processing systems?

- A. High storage costs
- B. Insufficient network bandwidth (Right Answers)
- C. Single data source
- D. Insufficient data processing performance under large data volume

Answer: B

292 . A company builds a cloud computing service platform to provide users with virtual machine resources to purchase. Which cloud computing deployment model does the company belong to?

- A. Public cloud (Right Answers)
- B. Private cloud
- C. Government Cloud
- D. Hybrid cloud

Answer: A

291 . Which of the following is not a component of VRM in FusionCompute?

- A. BRM
- B. PMS
- C. LOG
- D. VNA (Right Answers)

Answer: D

290 . GPU virtualization refers to the creation of multiple vGPUs on a physical GPU. Each virtual machine directly accesses some physical resources of the physical GPU by binding to the vGPU, thereby realizing the virtual machine sharing GPU capability, and can be applied to any type of graphics card.

- A. True
- B. False (Right Answers)

Answer: B

289 . Which way does FusionManager use to interact with FusionCompute?

- A. FusionCompute Driver (Right Answers)
- B. FusionCompute SDK
- C. FusionCompute API
- D. FusionCompute SOAP

Answer: A

288 . An enterprise has a VMware vCenter environment and is ready to introduce Huawei FusionSphere solutions. Which of the following functions of the FusionSphere components is most suitable for the enterprise to manage the two environments in a unified manner?

- A. FusionManager heterogeneous virtualization management function (Right Answers)
- B. FusionCompute server virtualization function
- C. FusionManager multi-tenancy function
- D. FusionCompute multi-site function

Answer: A

287 . Internet company data is generally structured data.

- A. True
- B. False (Right Answers)

Answer: B

286 . From a technical perspective, cloud computing includes cloud devices and cloud services, has the same components which required to virtualize data centers.

- A. True (Right Answers)
- B. False

Answer: A

285 . Which of the following does the FusionAccess Linked Clone Desktop feature not include?

- A. Map the parent and differential volume combinations to a linked clone volume for the virtual machine to use
- B. Linked-clone desktop pool provides desktop maintenance functions such as unified software updates and unified system restore
- C. Linked clones have the advantages of fast virtual machine creation and small disk storage footprint.
- D. Linked clone desktops have higher computational processing power than ordinary virtual machines (Right Answers)

Answer: D

- 284 . When the VRM is deployed in active/standby mode, you need to configure an quorum IP address. What happens when the arbitration IP is completely invalid?
- A. The VRM master/slave switchover occurs, and the VRM does not affect the system management after the switchover.
 - B. The standby node of the VRM is dropped, and does not affect the master node.
 - C. Both VRM nodes will be standby nodes, which will prevent VRM from managing the system. (Right Answers)
 - D. Two VRM nodes are cyclically performing the active/standby switchover, which will prevent VRM from managing the system.

Answer: C

- 283 . In FusionCompute, which option of the cluster must be set before the virtual machine can be migrated between hosts of different CPU types?
- A. Open the cluster's DRS
 - B. Turn on cluster DPM
 - C. Open the IMC mode of the cluster (Right Answers)
 - D. Turn on the HA function of the cluster.

Answer: C

- 282 . Which of the following is not a key technology for FusionInsight's reliable operation and maintenance?
- A. Fault detection
 - B. Power failure protection
 - C. Data encryption (Right Answers)
 - D. Online disk change

Answer: C

- 281 . The FusionManager supports hardware device management and monitoring. For the device alarm information, which method is generally used to collect?
- A. IPMI
 - B. SSH
 - C. SDK
 - D. SNMP (Right Answers)

Answer: D

- 280 . When the number of hosts that need to install CNA is small, which method is recommended to install?
- A. Batch deployment tools
 - B. ISO image file (Right Answers)
 - C. Installation Wizard Tool
 - D. USB boot installation

Answer: B

- 279 . Storage virtualization is the deployment of a logical layer on top of a discovery device to control storage resources through a logical layer.
- A. True (Right Answers)
 - B. False

Answer: A

- 278 . When the desktop cloud is deployed on the E9000 server, the virtual machine can directly access the GPU of the E9000 blade, that is, a GPU can only be used by one virtual machine.
- A. True (Right Answers)
 - B. False

Answer: A

- 277 . In the FusionManager, there are mainly two types of users. Which of the following functions belongs to the tenant's scope of responsibility?
- A. Access to the virtualized environment
 - B. Create a VDC
 - C. Create a VPC (Right Answers)
 - D. Create a virtual machine template

Answer: C

276 . When deploying a Huawei cloud computing solution, generally deploy the server BMC network, and which of the following network planes are deployed together?

- A. Storage network plane
- B. Business network plane
- C. Management network plane (Right Answers)
- D. Disaster recovery network plane

Answer: C

275 . Network virtualization is mainly to solve the problem of virtual machine communication after computing virtualization.

- A. True (Right Answers)
- B. False

Answer: A

274 . Which of the following options does not belong to 4 V features of the big data?

- A. Volume
- B. Variety
- C. Value
- D. Valid (Right Answers)

Answer: D

273 . The OceanStor 5600 v3 storage device supports AC and DC power failure protection.

- A. True (Right Answers)
- B. False

Answer: A

272 . The FusionManager supports different deployment modes. Which one is responsible for resource access, configuration, monitoring, and maintenance when the Top-Level deployment is adopted?

- A. Top FusionManager
- B. Local FusionManager (Right Answers)
- C. All-in-one FusionManager
- D. FusionManager

Answer: B

271 . Which of the following descriptions of FusionCompute is wrong?

- A. FusionCompute is the virtualization component of FusionSphere.
- B. FusionCompute realizes virtualization of x86 servers, storage, and networks to form an IT elastic resource pool.
- C. FusionCompute enables the scheduling and distribution of IT services and automatic deployment (Right Answers)
- D. FusionCompute is the cornerstone of the FusionSphere solution.

Answer: C

270 . Which of the following descriptions about the storage used by FusionCompute is wrong?

- A. When the storage device is NAS storage, you need to configure the shared directory (that is, data storage) and the list of hosts allowed to access as planned.
- B. When using the data storage provided by the shared storage, the data storage should be added to all hosts in the same cluster at the same time to ensure that the migration of the virtual machine within the cluster is not affected by the data storage.
- C. Management node virtual machine supports the use of virtualized data storage. It is recommended to use the virtualized data provided by the local hard disk or SAN storage. (Right Answers)
- D. When the storage type is local storage, only the remaining space of the disk where the host operating system is located, and other unpartitioned bare disks can be used as data storage.

Answer: C

269 . Which of the following scenarios is not the least suitable for Spark?

- A. Nearline or near real time
- B. Data mining
- C. Off-line analysis of large amounts of data (Right Answers)
- D. Machine learning

Answer: C

268 . HBase is a distributed database, so it does not need to rely on HDFS to run.

- A. True
- B. False (Right Answers)

Answer: B

267 . The index of the Hive table is built in the HBase table, which can greatly improve the query.

- A. True (Right Answers)
- B. False

Answer: A

266 . The VRM component is the management hub of FusionCompute. It is responsible for the scheduling, distribution, and automatic deployment of IT services, and can be cascaded.

- A. True
- B. False (Right Answers)

Answer: B

265 . Which of the following is suitable for HDFS?

- A. Store a large number of small files
- B. Real-time reading
- C. Need to modify the data frequently
- D. Streaming reading (Right Answers)

Answer: D

264 . FusionCompute creates a cluster by default. What is the name of the cluster?

- A. DefaultCluster
- B. FimtCluster
- C. ManagementCluster (Right Answers)
- D. Administrator

Answer: C

263 . Which of the following descriptions of the user's login to the virtual desktop is wrong?

- A. Users can view their own virtual desktops through the browser.
- B. Users can start, log in, and restart the virtual desktop assigned to them.
- C. FusionAccess manages the status of all virtual desktops
- D. Users can delete the virtual desktop assigned to themselves on the WI login page. **(Right Answers)**

Answer: D

262 . The storage advanced functionality provided by the "storage device virtualization" approach relies on the capabilities of the storage device.

- A. True **(Right Answers)**
- B. False

Answer: A

261 . FusionAccess consists of multiple components, all of which can be deployed in virtual machines. General components are recommended to be deployed as primary and backup nodes. Which component is recommended for single point deployment?

- A. HDC
- B. WI
- C. ITA
- D. Loggetter **(Right Answers)**

Answer: D

260 . The FusionAccess component HDA is supported on Windows and Linux user virtual machines.

- A. True
- B. False **(Right Answers)**

Answer: B

259 . FusionStorage is a distributed storage system developed by Huawei. What is the distributed feature?

- A. Aggregate huge disks to provide large-capacity storage
- B. Provide a large number of snapshot copies
- C. Integrate multiple general-purpose server disks to provide SERVER SAN **(Right Answers)**
- D. Provide efficient array self-healing ability

Answer: C

258 . FusionAccess has a complete service disaster recovery capability. When the GSLB is not deployed, what measures can be taken to ensure that the user's desktop service operation and maintenance after the disaster continues?

- A. Virtual machine backup and restore technology
- B. Storage backup and restore technology
- C. TC active detection, desktop switching technology **(Right Answers)**
- D. Virtual site disaster recovery technology

Answer: C

257 . In the following description of the E9000 server management module, which is wrong?

- A. One chassis can be configured with two MM910s to run in primary and backup mode.
- B. MM910 needs to be inserted and removed offline. **(Right Answers)**
- C. MM910 management module follows the IPMI v2.0 specification.
- D. MM910 provides remote on/off function

Answer: B

256 . Which of the descriptions of network virtual switching technology is wrong?

- A. The physical switch-based virtual switch migration is flexible, and the virtual machine migration does not affect the virtual machine's snapshot technology application. (Right Answers)
- B. Software-based virtual switching technology does not rely on advanced hardware features, migration is more flexible
- C. Intelligent network card-based switching can reduce server CPU consumption
- D. Data exchange between virtual machines can be realized by physical switches

Answer: A

255 . Which of the following is not a benefit of virtualization?

- A. Improve hardware utilization
- B. Reduce energy consumption
- C. Improve server performance (Right Answers)
- D. Operating system and hardware decoupling

Answer: C

254 . The main function of the FusionAccess component AccessGateway implementation?

- A. When the user accesses, interacts with the WI, provides access information for it, and supports the entire access process of the user.
- B. Interact with the HDA in the WM to collect the virtual machine status and access status reported by the HDA.
- C. Protocol gateway, internal and external network isolation, transmission encryption for desktop access. (Right Answers)
- D. Record the relationship between the user and the desktop and synchronize the usage status and connection status of the virtual desktop in real time.

Answer: C

253 . The branch office desktop cloud can realize the access of the virtual desktop branch to ensure the access network quality. At the same time, the branch virtual desktop is locally managed by the branch structure and has no relationship with the headquarters management.

- A. True
- B. False (Right Answers)

Answer: B

252 . Which one does the application management in FusionManager not include?

- A. Application Archive (Right Answers)
- B. Application online
- C. Application deployment
- D. Application modeling

Answer: A

251 . E-commerce website platform, the business traffic is relatively balanced, the data processing is in the cloud environment built by the company itself, when the traffic coming from the holiday increases, the same resource is processed from which cloud service provider?

- A. Public cloud
- B. Private cloud
- C. Government Cloud
- D. Hybrid cloud (Right Answers)

Answer: D

250 . Which of the following options was not specified when the FusionCompute cluster was created?

- A. Cluster HA strategy
- B. Memory reuse strategy
- C. Memory resource control strategy (Right Answers)
- D. GuestNUMA strategy

Answer: C

249 . Which of the following scenarios does not apply to Storm?

- A. Real-time analysis
- B. Continuous calculation
- C. Online machine learning
- D. Large amount of data offline analysis (Right Answers)

Answer: D

248 . The Huawei desktop cloud terminal user can customize the power management policy of the virtual desktop on the Web Interface login page. Which of the following is not the virtual desktop power management policy provided by Huawei Cloud Desktop?

- A. Disable automatic shutdown/restart/sleep
- B. Prohibit shutdown (Right Answers)
- C. Allow automatic shutdown/restart
- D. Allow automatic sleep

Answer: B

247 . Where is the logical location of FusionAccess in FusionCloud, the overall cloud computing solution of Huawei?

- A. Between the physical device and FusionSphere
- B. On the FusionCompute (Right Answers)
- C. Parallel to FusionStorage
- D. On the FusionManager

Answer: B

246 . During the installation of CNA using the batch deployment tool, if there are both hard disks and USB flash drives on the host, where will the tool automatically install the host operating system?

- A. The first hard drive
- B. The first partition of the first hard disk
- C. USB disk (Right Answers)
- D. Randomly choose the installation location

Answer: C

245 . Which of the following is true about the FusionCompute cascading management architecture?

- A. Any VRM node can be set as a cascade domain controller
- B. There is only one cascade domain controller in a cascaded domain center (Right Answers)
- C. Sites set up as cascading domain controllers must be manually joined to the cascading domain
- D. The VRM node virtual machine of the cascaded site needs to be created on the virtualized SAN storage.

Answer: B

244 . An enterprise uses eight RH2288H servers and one OceanStor S5800 V3 to deploy Huawei's desktop cloud. The service network plane adopts 10GE networking. If you are the enterprise IT administrator, for the cost-effective consideration, which of the following switches is recommended to carry the management network plane traffic of the desktop cloud solution?

- A. S5700-28C-EI-24S (Right Answers)
- B. S5700-52C-PWR-EI
- C. S6700-24-EI
- D. S6700-48-EI

Answer: A

243 . A data center in a company deploys both FusionCompute and VMware vCenter. For this scenario, it is recommended to deploy which of the following software to uniformly manage the virtualization resources of the data center?

- A. Top-Manager
- B. All-in-One FusionManager (Right Answers)
- C. FusionCompute
- D. FusionManager

Answer: B

242 . Building a green cloud data center requires not only software platforms, servers, storage and network equipment, but also the overall security design, the underlying green energy-efficient design and the integrated delivery capabilities of E2E.

- A. True (Right Answers)
- B. False

Answer: A

241 . Host storage virtualization layer + file system mode, where is the virtual machine template placed on the storage model?

- A. File system (Right Answers)
- B. Common block layer
- C. device driver layer
- D. Physical layer

Answer: A

240 . An enterprise is a large-scale professional video production company. Based on data security considerations, it is now ready to deploy what Huawei desktop cloud solutions?

- A. GPU sharing
- B. GPU hardware virtualization
- C. GPU passthrough (Right Answers)
- D. GPU mapping

Answer: C

239 . FusionCompute uses a variety of memory multiplexing technologies. Memory sharing technology refers to multiple virtual machines that can read and write to the same physical memory space of the host.

- A. True
- B. False (Right Answers)

Answer: B

238 . The VDC in the FusionManager has very powerful functions. Which of the following descriptions of the VDC is wrong?

- A. VDC is the virtual resource boundary assigned to the tenant
- B. VDC can specify the resource quota used by the tenant to limit the tenant's calculation, network and storage usage.
- C. VDC provides secure tenant network isolation environment (Right Answers)
- D. VDC is a software-defined data center and multi-tenant can use virtualized resources independently.

Answer: C

237 . The same data storage space is recommended to be added to different FusionCompute sites to improve storage space utilization.

- A. True
- B. False (Right Answers)

Answer: B

236 . When deploying Huawei desktop cloud, end users must use thin terminal access.

- A. True
- B. False (Right Answers)

Answer: B

235 . Which of the following does not belong to the main function of the thin terminal management system TCM?

- A. TC version upgrade
- B. TC anti-virus management (Right Answers)
- C. Information monitoring
- D. Log management

Answer: B

- 234 . In Huawei's cloud computing solution, what is the main function of FusionStorage in the desktop cloud integrated machine deployment?
- A. Provide infrastructure virtualization capabilities. Focusing on computing, storage, and network virtualization, heterogeneous hardware resources are aggregated into resource pools, and various resource scheduling and service guarantee capabilities are provided in resource pools.
 - B. Provide cloud management functions. Provide external infrastructure distribution, cross-cluster resource scheduling, application distribution and application scaling
 - C. Provide high performance distributed storage capabilities. High concurrency of IO access by pooling server disk resources and multi-node redundant storage of data (Right Answers)
 - D. Provide unified discovery, automatic configuration and fault monitoring capabilities for hardware devices

Answer: C

- 233 . After the FusionManager is installed, you need to initialize the FusionManager. If an error occurs during the configuration process, which command should be run first to stop the process and then reconfigure?
- A. fmconfig
 - B. stopALL (Right Answers)
 - C. fminit
 - D. restartALL

Answer: B

232 . What kind of technical solution does Huawei use for the scenario in FusionInsight?

- A. Office Cloudization
- B. IT infrastructure cloudization
- C. Enterprise Big Data Processing Platform (Right Answers)
- D. Enterprise application cloudization

Answer: C

- 231 . The core concept of MapReduce is to decompose a large computing task into each node of the cluster, make full use of cluster resources and shorten the running time.
- A. True (Right Answers)
 - B. False

Answer: A

- 230 . If you need to install the FusionCompute on Huawei server, you need to know the IP address of the BMC system and the IP address of the host management network port. The following description of the two, which is correct?
- A. Both are the same IP address
 - B. The BMC system IP address is used to add CNA node host to the FusionCompute.
 - C. The host management network port IP address is used to remotely install the operating system to the physical host.
 - D. The IP address of the BMC system can be added to the FusionCompute to facilitate the host to automatically power on and off. (Right Answers)

Answer: D

229 . A desktop virtual machine may not belong to any virtual machine or desktop group.

- A. True
- B. False (Right Answers)

Answer: B

- 228 . A user rents a virtual machine from cloud service provider for daily use, and returns the virtual machine to the cloud service provider when traveling, which reflects the key characteristics of cloud computing?
- A. On-demand self-service
 - B. Location-independent resource pool
 - C. Pay by usage (Right Answers)
 - D. Rapid flexibility

Answer: C

- 227 . An enterprise has a data center in multiple cities. Huawei FusionCompute virtualization environment is deployed in each data center. Which method is recommended?
- A. Deploy a local-FusionManager in each data center to manage a single data center resource, and then deploy a set of top-FusionManager in a data center to manage the resources of the multi-data center. (Right Answers)
 - B. Deploy a set of top-FusionManager management data center resources in each data center
 - C. Deploy a set of local-FusionManager management data center resources in each data center
 - D. Deploy a set of All-in-one FusionManager management data center resources in each data center

Answer: A

226 . When installing CNA nodes in batches, it is recommended to set the host's BIOS to which option to boot from?

- A. Hard disk
- B. Network (Right Answers)
- C. Optical drive
- D. USB

Answer: B

225 . "Raw device + logical volume", the most direct way to store virtualization, simple management and support for storage advanced features.

- A. True
- B. False (Right Answers)

Answer: B

224 . FusionInsight Hive supports encryption and the encryption algorithm can be customized.

- A. True (Right Answers)
- B. False

Answer: A

223 . Which of the following is not a function provided by FusionManager?

- A. Heterogeneous virtualization management
- B. Heterogeneous hardware device monitoring
- C. Unified management of multiple data centers
- D. Virtualization server (Right Answers)

Answer: D

222 . HyperDP is the backup management software of Huawei FusionSphere. Which level of backup is it mainly used for?

- A. Storage level
- B. Host level
- C. Virtual machine level (Right Answers)
- D. OS system level

Answer: C

221 . When configuring a physical network device, which method is generally used to isolate different network planes in Huawei cloud computing solutions?

- A. Port
- B. IP address
- C. MAC
- D. VLAN (Right Answers)

Answer: D

220 . During the installation of the CNNA component of FusionCompute, if the host has 4 network cards, how do I configure the Network parameters?

- A. Configure an IP address for eth0 and bind it to eth1 right away.
- B. Configure an IP address for each network port.
- C. Configure an IP address for eth0, others are not configured. (Right Answers)
- D. Use DHCP to automatically obtain the host IP address.

Answer: C

219 . Which of the following is the description of FusionAccess asset management, which is wrong?

- A. Asset management through ITA management PORTAL
- B. The operation of binding the user to the virtual desktop relationship becomes "attach"
- C. Identify the virtual desktop with a domain account (Right Answers)
- D. FusionAccess can create virtual desktops and assign them to users.

Answer: C

218 . Huawei's storage device's 4U 3.5-inch high-density hard disk supports online replacement of hard disks.

- A. True (Right Answers)
- B. False

Answer: A

217 . What is the main function of the FusionAccess component Web Interface implementation?

- A. Provide the end user's access interface entry (Right Answers)
- B. Desktop access login load balancing
- C. Protocol gateway for desktop access, internal and external network isolation, transmission encryption
- D. Interact with the HDA in the VM to collect the VM status and access status reported by the HDA.

Answer: A

216 . A virtual machine disk does not support increasing disk capacity online. Which of the following data storage types might the virtual machine use?

- A. Virtualize local disk
- B. FusionStorage
- C. Virtualized SAN storage
- D. NAS storage (Right Answers)

Answer: D

215 . The operating system running on top of the virtual machine is called the guest operating system, which is the Guest OS.

- A. True (Right Answers)
- B. False

Answer: A

214 . The 4U 3.5-inch high-density disk enclosure of the Huawei storage device is connected to the controller enclosure through which interface to achieve capacity expansion?

- A. GE interface
- B. FC interface
- C. SAS interface
- D. MINI SAS HD interface (Right Answers)

Answer: D

213 . VPC network security isolation function does not depend on which of the following technologies is implemented?

- A. Hardware firewall
- B. Software firewall
- C. Switch
- D. Elastic IP (Right Answers)

Answer: D

212 . FusionAccess consists of multiple components. Which of the following is not a required component?

- A. TSM (Right Answers)
- B. HDC
- C. ITA
- D. WI

Answer: A

211 . Which of the following is correct of the FT technology and HA mechanism in FusionCompute?

- A. From the length of business interruption, FT is longer than HA
- B. HA refers to the redundant configuration of the primary and standby dual machine. When the primary virtual machine fails, the standby virtual machine quickly takes over the primary virtual machine.
- C. HA migration virtual machine can ensure uninterrupted business
- D. FT technology requires real-time data synchronization between primary and standby dual virtual machines (Right Answers)

Answer: D

210 . The FusionSphere solution consists of several components. From the positioning point of view, where is the logical location of FusionCompute?

- A. Above FusionManager
- B. Between FusionManager and physical devices (Right Answers)
- C. Above FusionAccess
- D. FusionCompute contains two components, FusionManager and FusionAccess.

Answer: B

209 . FusionInsight does not support single sign-on.

- A. True
- B. False (Right Answers)

Answer: B

208 . When the user VM OS is Windows Server 2008 R2, which resources of the VM cannot be adjusted online?

- A. vRAM
- B. vCPU
- C. vMainboard (Right Answers)
- D. vNIC

Answer: C

207 . What is the main function can the Huawei Desktop Controller of FusionAccess component achieve?

- A. Used for desktop access gateway proxy, isolated internal and external networks
- B. Used for WEB access load balancing
- C. Protocol gateway for desktop access, internal and external network isolation, transmission encryption
- D. Record the relationship between the user and the desktop and synchronize the usage status and connection status of the virtual desktop in real time. (Right Answers)

Answer: D

206 . Which of the switch modules of the E9000 server can support 10GE and FC networks at the same time?

- A. CX310
- B. CX311 (Right Answers)
- C. CX611
- D. CX710

Answer: B

205 . The virtual machine runs on the host and can read the disc data in the physical optical drive of the host.

- A. True (Right Answers)
- B. False

Answer: A

204 . The configuration management function of FusionAccess includes the configuration of the FusionAccess management system, such as the connection with the FusionCompute, time synchronization, domain information, audit rules, and ITA component database port configuration.

- A. True (Right Answers)
- B. False

Answer: A

203 . The virtual machine quick release process in the desktop cloud refers to the virtual machine allocation (binding) process, not including the virtual machine creation process.

- A. True
- B. False (Right Answers)

Answer: B

202 . Which of the following components does not belong to the Hadoop layer of the FusionInsight architecture?

- A. HDFS
- B. HBase
- C. Miner (Right Answers)
- D. Hive

Answer: C

201 . Four virtual machines in the FusionCompute share the same parent image through link clones. After the parent image is upgraded, the four virtual machines cannot sense the upgrade changes and still use the pre-upgrade image.

- A. True
- B. False (Right Answers)

Answer: B

200 . When it comes to system scalability, Scale Up and Scale Out are two typical extension modes. Scale Up uses a scale-out mode. When the scale is expanded, the resources such as computing, storage, and network are balanced and extended, which is more conducive to deploying a large-scale cloud computing environment.

- A. True
- B. False (Right Answers)

Answer: B

199 . Which virtual machine needs to be deployed when using FusionManager to provide virtual firewall, load balancing and DHCP functions?

- A. VRM
- B. FusionManager
- C. VSAM (Right Answers)
- D. PVM

Answer: C

198 . After a company uses cloud computing technology to build a virtualized data center, IT support personnel are greatly reduced. Which value of cloud computing is reflected?

- A. Data security
- B. Improve resource utilization
- C. Saving maintenance costs (Right Answers)
- D. Unified management

Answer: C

197 . FusionAccess has two types of desktop distribution methods: standard distribution and fast release. Which step is the difference between the two approaches?

- A. Create a business resource (Right Answers)
- B. Make a template
- C. Create a virtual machine user
- D. Create network resources

Answer: A

196 . In the cloud data center, the cloud system automatically adjusts according to the pressure of the server and transfers some services from the stressful server to the less stressful server to maintain the average pressure distribution. Which technology of cloud computing is embodied in this adjustment process?

- A. Memory reuse
- B. Linked clone
- C. Dynamic resource adjustment
- D. Load balancing (Right Answers)

Answer: D

195 . When deploying a FusionCompute, if a host has more than 4 Ethernet ports, it is recommended to set the eth0 and eth1 as management plane network ports at the same time, and bind after the FusionCompute is installed. What kind of method is generally used to bind the management plane network port?

- A. Load grouping based on source and destination MAC
- B. Active and standby (Right Answers)
- C. Load grouping based on polling
- D. Load grouping based on source destination port

Answer: B

194 . What is the main value of DPM in FusionCompute?

- A. Improve computing performance
- B. Energy saving and environmental protection (Right Answers)
- C. Improve machine usage
- D. Eliminate performance bottlenecks

Answer: B

193 . What is the overall name of Huawei Cloud Computing Solution?

- A. FusionCloud (Right Answers)
- B. FusionSphere
- C. FusionCube
- D. FusionAccess

Answer: A

192 . In order to ensure data security, an enterprise desktop cloud administrator wants to prohibit desktop users from using USB storage devices. Which of the following measures is most appropriate?

- A. Physically disable the TC device USB port
- B. Set the desktop cloud policy to prohibit the use of USB storage devices (Right Answers)
- C. Develop a corporate system that prohibit the use of USB storage devices
- D. Administrator regularly supervises

Answer: B

191 . The FusionManager is positioned to solve the problem of resources unified management of which level?

- A. Host level
- B. Cluster level
- C. Site level
- D. Data Center Level (Right Answers)

Answer: D

190 . The E9000 server supports a variety of different compute node blades. When an enterprise running application only requires general computing performance, but requires big data storage, which of the following compute nodes is the most appropriate?

- A.CH121
- B.CH222 (Right Answers)
- C.CH240
- D.CH242

Answer: B

189 . Which of the following descriptions of the functions of each component of FusionAccess is wrong?

- A. Web Interface provides end user access interface entry
- B. HDA is deployed in Windows and Linux user VMs to implement HDP access and report status and connection information to the HDC. (Right Answers)
- C. TC is the terminal used to access the desktop
- D. WI controls the startup and restart of the virtual machine through WIA

Answer: B

188 . FusionManager supports multiple interfaces. Which of the following interfaces is not designed for integrated management by third-party operating platforms?

- A. REST interface
- B. SOAP interface
- C. SNMP interface
- D. HTTPS interface (Right Answers)

Answer: D

187 . After the DRS is enabled in the cluster, FusionCompute can measure resources based on various factors to achieve resource scheduling. Which of the following is not a measure?

- A. CPU
- B. Disk (Right Answers)
- C. Memory
- D. CPU and memory

Answer: B

186 . When deploying VRM, what kind of storage is generally recommended to VRM deployed on?

- A. Local disk (Right Answers)
- B. FC SAN
- C. IP SAN
- D. NAS

Answer: A

185 . In the process of installing the FusionCompute CNA component using the ISO image file, which parameter cannot use the default value, must be manually configured?

- A. Hard Drive
- B. Network
- C. Hostname
- D. Password (Right Answers)

Answer: D

184 . When configuring FusionCompute, which function configuration does the modifying host storage multipath belong to?

- A. Host and cluster management (Right Answers)
- B. Storage Management
- C. Network Management
- D. System Management

Answer: A

183 . In the FusionAccess branch deployment scenario, if the branch office and the headquarters network are interrupted, users in the branch office cannot access the desktop cloud system.

- A. True
- B. False (Right Answers)

Answer: B

182 . An enterprise is ready to deploy the Huawei desktop cloud solution. The number of terminal users is about 800. Please recommend a deployment mode suitable for the enterprise.

- A. Standard desktop cloud, the network configuration is E9000+IP SAN 10GE
- B. Desktop cloud machine, the network configuration is RH2288H+FusionStorage 10GE (Right Answers)
- C. Desktop cloud machine, the network configuration is E9000+FusionStorage 10GE
- D. FusionSphere virtualization, the network configuration is RH2288H+IP SAN 10GE

Answer: B

181 . In order to solve the early problems of poor virtual desktop experience, poor compatibility, and difficult management, which of the following protocol does have independently developed by Huawei?

- A. RDP
- B. ICA
- C. HDX
- D. HDP (Right Answers)

Answer: D

180 . Which of the following descriptions of VRM is wrong?

- A. The scope of management of a VRM is the management scope of a site.
- B. Multiple VRMs can be cascaded to provide unified Portal to manage multiple site resources.
- C. It is recommended to bind the VRM node VM to the host where it is located.
- D. The active and standby VRM nodes can be deployed to the same host on the management cluster. (Right Answers)

Answer: D

179 . FusionManager can uniformly manage heterogeneous virtualization products, such as VMware vCenter and Huawei FusionCompute and so on.

- A. True (Right Answers)
- B. False

Answer: A

178 . The TC device in Huawei's cloud computing solution supports multiple operating systems. Which operating system does the CT3100 support?

- A. Linux (Right Answers)
- B. WES7
- C. Windows
- D. FreeBSD

Answer: A

177 . In the process of installing FusionCompute, you need to set the IP address of the host management network port and the IP address of the VRM management. What is the correct description of the two?

- A. Use the host management network port IP to cascade multiple sites
- B. Add multiple hosts to the cluster using the VRM management IP address.
- C. Use the VRM management IP address to access the FusionCompute web portal page. (Right Answers)
- D. The host management network port IP address is the VRM management IP address.

Answer: C

176 . The virtual desktop list that the FusionAccess end user sees on the Web Interface page is actually stored in which component?

- A. WI
- B. HDC
- C. AD
- D. Database (Right Answers)

Answer: D

175 . Which of the following are the components of FusionCompute? (Multiple Choice)

- A. Ultra VR component
- B. VRM component (Right Answers)
- C. FusionCompute component
- D. CNA component (Right Answers)

Answer: BD

174 . One task in FusionAccess is an operation on the system. All tasks are managed by the FusionAccess task center and support the scheduled operation management of the task.

- A. True (Right Answers)
- B. False

Answer: A

173 . You can install the FusionManager in multiple ways. When the FusionManager is deployed in a VMware virtualization environment, which method do you need to install?

- A. ISO image (Right Answers)
- B. Template file
- C. PXE automatic installation
- D. Both ISO image and template file can be

Answer: A

172 . In Huawei's fusionsphere solution, if you want the virtual machine to automatically perform HA after the host is down, switch to another host. Which of the following conditions is not necessary?

- A. The host belongs to the same cluster
- B. The cluster which the host belongs to is enabled HA.
- C. The host connects to the same shared data store
- D. All virtual machines requiring HA on the host use the same network segment IP (Right Answers)

Answer: D

171 . On the same host as Fusioncompute, the smart network card and the common network card cannot be mixed.

- A. True (Right Answers)
- B. False

Answer: A

170. In the mode of the host storage virtualization layer + file system, after the storage device is mounted on the host, the file system is created on the mounted LUN.

- A. True (Right Answers)
- B. False

Answer: A

169 . Which of the following descriptions of VPC is wrong?

- A, VPC provides isolated network environment
- B. VPN can be used in VPC
- C. Security groups can be used in VPC
- D, VPC does not provide NAT service

Answer: D

168 . What solutions does the Huawei cloud computing FusionCloud brand include? (Multiple Choice)

- A. FusionSphere Infrastructure Virtualization (Right Answers)
- B. FusionServer Huawei server
- C. FusionAccess cloud access management (Right Answers)
- D. FusionInsight big data processing (Right Answers)

Answer: ACD

167. Cloud computing virtualization technology can improve resource utilization, which of the following are included? (Multiple Choice)

- A. Virtual machine resource adjustment (Right Answers)
- B. Memory reuse (Right Answers)
- C. Improve server utilization (Right Answers)
- D. Application automatic deployment

Answer: ABC

166. In the operation and maintenance management tool of FusionSphere. the objects that can be monitored by the Alarm function do not include:

- A. server
- B. storage
- C. switch
- D. virtualization platform
- E. TC (Right Answers)

Answer: E

165. After the FusionManager monitors the server configuration, you can perform some maintenance actions on the hardware. Which of the following actions cannot be performed on hardware through FusionManager?

- A. power on and off
- B. safely re-start
- C. safely power off
- D. PXE loading (Right Answers)

Answer: D

164. Hypervisor is a middleware software layer running between the underlying physical server and the operating system, allowing multiple operating systems and applications to share hardware, and VMM is used to manage the Hypervisor.

- A. True
- B. False (Right Answers)

Answer: B

163. When it comes to system scalability. Scale Up and Scale Out are two typical extension modes. Which of the following statements about the two extension modes are wrong? (Multiple Choice)

- A. When Scale Up expand, focus on improving the performance of a single node, the entire system is easy to achieve performance bottlenecks
- B. Cloud computing generally uses Scale Up mode to expand. (Right Answers)
- C. When Scale Out expand, the number of nodes is increased, and the system performance is improved overall.
- D. The traditional telecommunications industry generally uses the Scale Out mode for expansion. (Right Answers)

Answer: BD

162. Cloud computing is a model, not just a technology, it can be either a business model or a service model.

- A. True (Right Answers)
- B. False

Answer: A

161 . The FusionSphere solution virtualizes hardware resources by deploying virtualization software on the server, so that multiple physical server resources can be consolidated into one high-performance virtual machine to work.

- A. True
- B. False (Right Answers)

Answer: B

160 . Which of the following descriptions about VPC is wrong?

- A. VPC provides an isolated network environment
- B. VPN can be used in VPC
- C. Security groups can be used in VPC
- D. VPC does not provide NAT service **(Right Answers)**

Answer: D

159. After the VRM is deployed on the active and standby devices, you can access the FusionCompute through a floating IP address. The network is normal, the floating IP address can't access all the time, which of the following is the most likely point of failure?

- A. The VRM master node is faulty
- B. The VRM standby node is faulty.
- C. One of the VRM master nodes or standby nodes has a problem
- D. Both the active and standby VRM nodes are faulty. **(Right Answers)**

Answer: D

158. Where is the DRS feature turned on in FusionSphere?

- A. Cluster **(Right Answers)**
- B. Host
- C. Virtual machine
- D. Operating system

Answer: A

157. In Huawei FusionSphere, which of the following types of storage can be added as storage resources and associated to the host? (Multiple Choice)

- A. FC-SAN storage **(Right Answers)**
- B. IP-SAN storage **(Right Answers)**
- C. Local hard drive **(Right Answers)**
- D. Local memory disk **(Right Answers)**

Answer: ABCD

156 . In the Huawei FusionSphere solution, when the compute node is powered off, the system can pull the virtual machine with the HA attribute on the compute node to other compute nodes. Which of the following options is not necessary to implement the function?

- A. The virtual machine with the HA attribute on the node uses the same network segment IP. **(Right Answers)**
- B. The virtual machine is not bound to the machine.
- C. The cluster which the node belongs to is enabled HA.
- D. Nodes connect to the same shared data store.

Answer: A

155. To monitor the server on the FusionManager needs to use the SNMP protocol or SSH protocol. Therefore, what basic information should be collected before accessing the server? (Multiple Choice)

- A. Server IP address **(Right Answers)**
- B. Server SNMP port number **(Right Answers)**
- C. Server SSH username and password **(Right Answers)**
- D. SNMP version number **(Right Answers)**

Answer: ABCD

154. Which of the following functions are supported by the FusionManager?

- A. Unified management of heterogeneous virtualization platforms **(Right Answers)**
- B. Unified monitoring of heterogeneous hardware **(Right Answers)**
- C. Secure network isolation capabilities **(Right Answers)**
- D. Multi-tenant management capabilities **(Right Answers)**

Answer: ABCD

153. FusionSphere warning level from high to low arrangement, which is correct?

- A. Important - Urgent - Secondary - Prompt
- B. Urgent - Important - Prompt - Secondary
- C. Prompt - Secondary - Important - Urgent
- D. Urgent - Important - Secondary - Prompt **(Right Answers)**

Answer: D

152. After installing FusionCompute using the tool, the system will automatically create a cluster. What operation can the administrator do to the cluster? (Multiple Choice)

- A. Modify the name **(Right Answers)**
- B. Delete **(Right Answers)**
- C. Copy
- D. Add host **(Right Answers)**

Answer: ABD

151. Which of the following does not belong to the category of data center?

- A. Server
- B. Currency **(Right Answers)**
- C. Network
- D. Storage

Answer: B

150. Which description is correct about the hypervisor?

- A. Hypervisor is Virtualization
- B. Hypervisor is essentially an operating system
- C. Hypervisor is the key to virtualizing physical hardware **(Right Answers)**
- D. Hypervisor carries a lot of drivers, so Hypervisor does not need to install drivers and patches

Answer: C

149. Which statement is correct about the installation of VRM in FusionCompute?

- A. VRM is recommended to be installed in different clusters
- B. VRM can use tools unified installation, can also manually install **(Right Answers)**
- C. VRM needs to be installed with CAN
- D. VRM is recommended to be installed on virtualized shared storage so that if the host fails, it can be migrated to other hosts

Answer: B

148. Administrators in FusionManager can be assigned two main roles: ServiceAdmin and OperationAdmin. Which statement is correct about these two roles? (Multiple Choice)

- A. OperationAdmin focuses on business operations
- B. ServiceAdmin focuses on resource pool construction, management, and maintenance
- C. ServiceAdmin focuses on business operations **(Right Answers)**
- D. OperationAdmin focuses on resource pool construction, management, and maintenance **(Right Answers)**

Answer: CD

147. Which of the following does not belong to the operation log level in the FusionSphere system?

- A. High risk
- B. Danger
- C. Important (Right Answers)
- D. General
- E. prompt

Answer: C

146. Which of the following statements is wrong about cloud computing architectures and traditional IT architectures?

- A. Traditional IT relies on hardware reliability to achieve high system availability by eliminating single points of failure through the infrastructure.
- B. Compared with traditional IT architecture, cloud computing architecture does not require high reliability of hardware.
- C. Traditional IT adopts Scale-up, which expands or increases the number of servers per device module.
- D. The traditional IT architecture uses server clusters, while the cloud computing architecture uses data marts. (Right Answers)

Answer: D

145. Which of the following elements cannot be included in the application template in FusionManager?

- A. Virtual Machine
- B. Network
- C. Virtual Load Balancer
- D. Virtual Router (Right Answers)

Answer: D

144. What kind of virtualization can be divided into in the implementation way? (Multiple choice)

- A. Full virtualization (Right Answers)
- B. Paravirtualization (Right Answers)
- C. Hardware virtualization
- D. Hybrid virtualization

Answer: AB

143. In Huawei FusionSphere, decentralized domain-based management means that in the administrator view, resource clusters can be divided into domains, such as clusters. By adding different users to the domain, configure different permissions for users, so that different users can have different permissions for different resource clusters, such as viewing and modifying permissions.

- A. TRUE (Right Answers)
- B. FALSE

Answer: T

142. What technologies are used in Layer 2 security isolation of VPCs in Huawei cloud computing?

- A. VLAN (Right Answers)
- B. Security group
- C. ACL
- D. VPN

Answer: A

141. In Huawei FusionCompute, which statement is correct about management roles?

- A. A "role" can have one or more different "operation rights" (Right Answers)
- B. A "user" can only have one "role"
- C. If a "user" has multiple "role", the "operational authority" it has will depend on the priority of the best "role"
- D. "Operating rights" of "Role" cannot be modified

Answer: A

140. The desktop cloud is also known as the "PC in the cloud." What is the underlying core technology?

- A. Distributed Management Technology
- B. Desktop Protocol Technology
- C. Virtualization Technology (Right Answers)
- D. Mobile terminal technology

Answer: C

139. A company has set up a desktop cloud environment for employees to use only. Which cloud computing deployment mode does it belong to?

- A. Public cloud
- B. Private cloud (Right Answers)
- C. Government Cloud
- D. Hybrid Cloud

Answer: B

138. In Huawei cloud computing, when a snapshot is created, the current disk is set to read-only. The system automatically creates a delta disk in the data storage where the disk resides. Subsequent editing of the disk data is saved on the delta disk, that is, the delta disk. Indicates the difference between the current status of the disk and the status of the last time the snapshot was taken. When you create another snapshot of this disk, the current delta disk is set to read-only, and the system creates another delta disk in the datastore.

- A. TRUE
- B. FALSE (Right Answers)

Answer: F

137. Business administrators in FusionManager can create virtual machine templates.

- A. TRUE
- B. FALSE (Right Answers)

Answer: F

136. In Huawei FusionSphere, which of the following components mainly provides resource virtualization and virtualized resource pool management functions?

- A. Fusionmanager
- B. FusionCube
- C. FusionCompute (Right Answers)
- D. Fusionstorage

Answer: C

135. Which statement is incorrect about clusters, hosts, and virtual machines in FusionSphere?

- A. The same host can belong to different clusters
- B. Virtual machines can be migrated across clusters
- C. The basis for judging whether several hosts belong to the same cluster is to see if these hosts use the same shared storage (Right Answers)
- D. The cluster consists of multiple hosts and their associated storage and network resources

Answer: C

134. In FusionCompute, the administrator binds the two NICs of the CNA host through active/standby mode. The data transmission rate is equal to the sum of the transmission rates of the two network ports.

- A. TRUE
- B. FALSE (Right Answers)

Answer: F

133. What types of storage resources can be supported in FusionCompute? (Multiple Choice)

- A. FC SAN (Right Answers)
- B. IP SAN (Right Answers)
- C. NAS (Right Answers)
- D. Advanced SAN (Right Answers)
- E. FusionStorage (Right Answers)

Answer: ABCDE

132. Which of the following does not belong to the cloud computing service mode?

- A. Software as a Service
- B. Platform as a Service
- C. Infrastructure as a Service
- D. Measurable service (Right Answers)

Answer: D

131. Before installing tools on the virtual machine in FusionCompute, which of the following precondition is incorrect?

- A. The virtual machine has been installed the operating system
- B. The virtual machine does not have other versions of Tools installed
- C. The remaining space of the virtual machine system disk must be greater than 32MB
- D. If the operating system of the virtual machine is Windows 2008 and Windows 7, you need to use the Administrator user to install Tools
- E. The status of the virtual machine is "stopped" (Right Answers)

Answer: E

130. In FusionSphere, the definition of major accidents, which option does not include?

- A. Suddenly happened
- B. A wide range of influence
- C. The scope is large
- D. Long recovery time (Right Answers)
- E. Serious consequences for the safe operation and service quality of the network

Answer: D

129. Which of the following is the cornerstone of Huawei FusionCloud cloud computing solution?

- A. FusionAccess
- B. FusionSphere (Right Answers)
- C. FusionInsight
- D. FusionCube

Answer: B

128. Which of the following statement is wrong about the FusionCompute maintenance mode?

- A. After the host enters maintenance mode, it cannot perform operations such as power off or restart on the host. (Right Answers)
- B. Before the host enters maintenance mode, it is recommended to shut down or remove the virtual machine on the host before performing maintenance on the host.
- C. It is not possible to create, start, or move to a virtual machine on the host in maintenance mode.
- D. After the host enters maintenance mode, the VM on the host does not participate in the computing resource scheduling policy of the cluster to which it belongs.

Answer: A

127. In FusionCompute, administrators can move hosts. Which of the following options are the moving path? (Multiple Choice)

- A. Moving from site to cluster (Right Answers)
- B. Moving from a cluster to another cluster (Right Answers)
- C. Moving from site to site
- D. Moving from a cluster to a site (Right Answers)

Answer: ABD

126. Which of the following description is wrong about the basic concepts of FusionManager?

- A. Region is a region, such as Asia Pacific
- B. DC is a data center concept, such as Beijing, Hong Kong, and Tokyo data centers
- C. Zone is an independent Layer 2 network area in the data center
- D. Cluster is the data center virtualization network isolation boundary (Right Answers)

Answer: D

125. When collecting the FusionSphere running logs, what are the components that do not need to be collected?

- A. UHM
- B. VRM
- C. CNA
- D. VM (Right Answers)

Answer: D

124. In FusionCompute, if a virtual machine is bound to a host, which of the following functions will be affected? (Multiple choice)

- A. Snapshot
- B. DRS (Right Answers)
- C. Hot migration (Right Answers)
- D. Memory hot add

Answer: BC

123. If VM template creation has been completed in FusionCompute, the password of the VM deployed using this template is the password of the template.

- A. True
- B. False (Right Answers)

Answer: B

122. When a virtual machine is cloned in FusionCompute, the status of the virtual machine can be "in progress".

- A. True (Right Answers)
- B. False

Answer: A

121. In the cloud computing, how can protect the customer's information security?
- A. Using advanced security technologies (Right Answers)
 - B. Physically isolate each customer's resources or applications in the data center
 - C. Create a small data center for each customer individually
 - D. Do not allow customers to share any resources

Answer: A

120. In Huawei FusionSphere, which of the following options are correct for adding a storage interface to a host? (Multiple choice)
- A. Select one of the hosts and add a storage interface on the configuration page (Right Answers)
 - B. You can add storage interfaces for hosts in batches
 - C. When adding a storage interface to a host, the VLAN ID can be omitted
 - D. Storage interfaces cannot be added when using FC-SAN (Right Answers)

Answer: AD

119. In Huawei FusionSphere, all hosts at the same site belong to at least one cluster.
- A. True
 - B. False (Right Answers)

Answer: B

118. When the cloud computing service provider provides various services, the customer only needs to put forward the demand, and the service provider will immediately provide the resources or applications required by the customer, and when the customer needs to expand or reduce the capacity, they can make corresponding changes on the basis of the original service. Which of the characteristics of cloud computing can the above content reflect?
- A. Pan-network access
 - B. Resource pooling
 - C. Measurable services
 - D. Rapid elastic expansion (Right Answers)

Answer: D

117. The clone of a virtual machine in the FusionCompute refers to creating a new virtual machine based on its own virtual machine. The specification of the virtual machine is not supported during creation.
- A. True
 - B. False (Right Answers)

Answer: B

116. In FusionCompute, which of the following operation can be done on the FusionCompute management interface without installing Tools on the virtual machine?
- A. Create a snapshot
 - B. Migration
 - C. Close (Right Answers)
 - D. Sleep

Answer: C

115. In Huawei FusionSphere, the memory and CPU resources used by a virtual machine can only be provided by the same cluster. Therefore, the maximum amount of computing resources which virtual machines can actually use cannot exceed the sum of the resources available to all hosts in the cluster.
- A. True
 - B. False (Right Answers)

Answer: B

114. Which of the following options is not included in FusionSphere's hardware infrastructure layer?
- A. Server
 - B. Storage
 - C. Network
 - D. Security
 - E. Power supply (Right Answers)

Answer: E

113. In FusionCompute, each virtual machine can bind multiple USB devices. Which of the following features will be affected when a virtual machine is bound to a USB device? (Multiple choice)
- A. Virtual Machine Restart
 - B. Hot migration of virtual machines (Right Answers)
 - C. Cluster scheduling policy (Right Answers)
 - D. Capacity Expansion of Virtual Machines

Answer: BC

112. Create virtual machines by importing virtual machines in FusionCompute. Which of the following file formats does not support the creation of virtual machines?
- A. .ova
 - B. .xml
 - C. .vmdk (Right Answers)
 - D. .ovf

Answer: C

111. In cloud computing, customers need to access the resources or applications they need through the network.
- A. True (Right Answers)
 - B. False

Answer: A

110. What are the optional modules in the overall architecture of Huawei FusionSphere products? (Multiple choice)

- A. FusionCompute (Right Answers)
- B. FusionStorage (Right Answers)
- C. FusionNetwork
- D. FusionCloud

Answer: AB

108. What is incorrect about the description of the CPU QoS technology in the FusionCompute?
- A. Control the use of CPU resources of the virtual machine by adjusting "reserve", "share", and "limitation"
 - B. The role of "share" is to guarantee the lower limit of the computing power of the virtual machine, that is, how much resources can be used at least (Right Answers)
 - C. The role of "share" is to balance and adjust resources according to the relative CPU share of multiple virtual machines when computing resources are insufficient.
 - D. The role of "Restrictions" are the maximum resources that a virtual machine can use

Answer: B

107. Storage virtualization technology can improve storage utilization and provide storage resources for multiple virtual machines.
- A. True (Right Answers)
 - B. False

Answer: A

106. What does a virtual switch connect to a physical network through in FusionSphere?

- A. Uplink (Right Answers)
- B. Port group
- C. Virtual Network Card
- D. iNIC

Answer: A

105. In the following FusionCompute maintenance items, which of the following is not necessary to check every day?

- A. Alarms on the FusionCompute
- B. Health inspection report
- C. Indicator status of servers, switches, and storage devices
- D. Air quality (Right Answers)

Answer: D

104. Which of the following description about snapshot feature of the FusionCompute is correct? (Multiple choice)

- A. A virtual machine can create up to 8 snapshots. The created snapshots can only be manually deleted.
- B. The virtual machine supports the snapshot function only when the storage type of the virtual machine disk is Advanced SAN storage, FusionStorage, virtualized local hard disk, virtualized SAN storage, or NAS storage. (Right Answers)
- C. If the VM disk is set to "Slave", the snapshot is not taken when the snapshot is created
- D. Cannot Operate Virtual Machine during Online Incremental Snapshot Creation (Right Answers)

Answer: BD

103. In the cloud computing, which of the following is referred to the so-called data center north-south traffic?

- A. Interactive traffic between multiple data centers
- B. Data center-to-user traffic (Right Answers)
- C. Data Center internal interactive traffic
- D. Data Center External Traffic

Answer: B

102. FusionManager supports backing up the data of each management node. If the file is required to be stored in a non-local environment, which component must be configured?

- A. Log server
- B. Backup server
- C. Backup software
- D. FTP server (Right Answers)

Answer: D

101. When deploying a VRM, what type of storage is generally recommended for deploying VRM?

- A. Local disk (Right Answers)
- B. FC SAN
- C. IP SAN
- D. NAS

Answer: A

100. When creating a port group in FusionCompute, which of the following statements represent setting the VLAN ID to 0?

- A. Set the VLAN tag of packets passing this port group to 0
- B. Only packets with VLAN 0 tags are allowed to pass through this port group
- C. Allow 0 packets with VLAN-tagged to pass through this port group
- D. Do not make any changes to the packets passing through this port group (Right Answers)

Answer: D

99. In FusionSphere, virtual machines can communicate with other virtual machines only after they have established contact with the physical network.

- A. True
- B. False (Right Answers)

Answer: B

98. What is the format of the virtual disk file in FusionCompute?

- A. OVF
- B. VMDK
- C. VHD (Right Answers)
- D. DHT

Answer: C

97. When a virtual machine in FusionCompute mounts a local mirror file and installs an operating system, you can close the VNC window at any time without affecting mirror reading.

- A. True
- B. False (Right Answers)

Answer: B

96. In FusionCompute, do the following operations on the hardware of the virtual machine. What can be effective immediately?

- A. Delete the network card (Right Answers)
- B. Increase CPU
- C. Reduce CPU
- D. Increase memory

Answer: A

95. In Huawei FusionSphere, which of the following types of storage can be added as storage resources and associated with hosts? (Multiple choice)

- A. SAN storage (Right Answers)
- B. NAS storage (Right Answers)
- C. Local disk
- D. Local memory disk

Answer: AB

94. In Huawei FusionSphere, which of the following functions can be implemented for disk thin provisioning? (Multiple choice)

- A. The virtual storage thin provisioning is completely independent of the operating system and hardware. Therefore, as long as the virtual image management system is used, virtual storage thin provisioning can be provided. (Right Answers)
- B. Providing early warning of data storage capacity. You can set a threshold. When the storage capacity exceeds the threshold, an alarm is generated. (Right Answers)
- C. Provides virtual disk space monitoring and recovery (Right Answers)
- D. Currently does not support virtual machine disk recovery in NTFS format

Answer: ABC

93. When deploying a VRM using the FusionCompute Installation Wizard tool, which form is used to deploy a VRM virtual machine?

- A. ISO file auto answer installation
- B. Importing Template Files into Virtual Machines (Right Answers)
- C. PXE automatic installation
- D. Automatically create a virtual machine, automatically mount the ISO file installation

Answer: B

92. When users install the following OS on the VM, can the disk be formatted as NTFS?

- A. Linux
- B. UVP
- C. Windows (Right Answers)
- D. Unix

Answer: C

91. In FusionCompute, the QoS parameters that can be set for the VM do not include:

- A. Memory
- B. CPU
- C. GPU (Right Answers)
- D. Disk IOPS
- E. Network

Answer: C

90. In FusionCompute, what functions can be set to enable virtual machines to migrate between hosts of different CPU types?

- A. Cluster I/O ring adaptation
- B. Cluster HANA optimization
- C. Cluster GuestNUMA policy
- D. Cluster IMC strategy (Right Answers)

Answer: D

89. Which of the following technologies belong to the cloud computing technology system? (Multiple choices)

- A. Virtualization Technology (Right Answers)
- B. Storage Technology (Right Answers)
- C. Network Technology (Right Answers)
- D. Distributed Technology (Right Answers)

Answer: ABCD

88. In FusionCompute, what are the following functions provided by VRM? (Multiple choices)

- A. Manage the block storage resources in the cluster. (Right Answers)
- B. Manage the network resources (IP/VLAN/DHCP) in the cluster and assign IP addresses to the virtual machines. (Right Answers)
- C. Through the unified management of virtual resources and user data, external services such as elastic computing, storage, and IP are provided. (Right Answers)
- D. Manage computing resources on the compute nodes.

Answer: ABC

87. FusionCompute uses virtual machine QoS technology to ensure virtual machine resource allocation, isolates the interaction between virtual machines due to different services, and meets the requirements of different services for virtual machine performance which could maximizes resource reuse and reduces costs.

- A. True (Right Answers)
- B. False

Answer: A

86. In the following project scenario, the customer purchases servers, switches, storage, and TCs. It requires the company's existing office desktops to be completely migrated from the PC to the cloud. Which are the required in the following of the employees can use the account passwords to log in to the cloud office desktop through the TC or SC? (Multiple choices)

- A. Fusion Compute (Right Answers)
- B. Fusion Storage
- C. Fusion Manager
- D. Fusion Access (Right Answers)
- E. Fusion Network

Answer: AD

85. Virtualization technology can be used to virtualize a physical server into multiple virtual machines, which improves the physical server's hardware performance.

- A. True
- B. False (Right Answers)

Answer: B

83. In Huawei FusionSphere, the computing resources on the host are virtualized to form a computing resource pool. The computing resources of all hosts in the same cluster form a computing resource pool.

- A. True (Right Answers)
- B. False

Answer: A