

H12-211.premium.exam.413q

Number: H12-211
Passing Score: 800
Time Limit: 120 min
File Version: 12.0

H12-211

HCIA-Routing & Switching

Version 12.0

Exam A

QUESTION 1

An administrator currently manages AR2200 devices in the network through a single password, however the company wishes to introduce another two administrators and provide unique user credentials and privilege levels for telnet access to the network devices.

What action can be taken? (Choose three)

- A. Configure three users under the AAA-view, and assign each a different password.
- B. The authentication mode must be changed to AAA.
- C. Each administrator must be assigned a privilege level.
- D. A public IP address must be assigned to each user for telnet access

Correct Answer: ABC

Section: (none)

Explanation

Explanation/Reference:

QUESTION 2

Which of the following authentication methods are supported for Telnet users? (Choose three)

- A. Password authentication
- B. AAA local authentication
- C. MD5 authentication
- D. No authentication

Correct Answer: ABD

Section: (none)

Explanation

Explanation/Reference:

QUESTION 3

On Huawei AR G3 Series routers, which authentication modes does AAA support? (Choose all that apply.)

- A. None
- B. Local
- C. Radius
- D. 802.1X

Correct Answer: ABC

Section: (none)

Explanation

Explanation/Reference:

QUESTION 4

```
[RTA]aaa
[RTA-aaa]domain huawei
[RTA-aaa-domain-huawei]authentication-scheme au1
[RTA-aaa-domain-huawei]authentication-scheme au2
```

Refer to the configuration output. RTA has been configured using AAA as shown, and associated with the "huawei" domain. For users in the huawei domain, which authentication-scheme will be used?

- A. au1
- B. au2
- C. au1 will be used. When au1 is deleted, users will use au2
- D. au2 will be used. When au2 is deleted, users will use au1

Correct Answer: B

Section: (none)

Explanation

Explanation/Reference:

QUESTION 5

A user accesses a server supporting AAA, for which the authorization mode on the AAA server has been configured using the command "authorization-mode hwtacacs if-authenticated".

Which of the following statements regarding this command are true? (Choose three).

- A. If the hwtacacs server fails to respond, the user will be authenticated using local authentication.
- B. If the hwtacacs server fails to respond, the user will be authenticated using remote authentication.
- C. If the hwtacacs server fails to respond, the user will bypass authentication.
- D. The hwtacacs server will authorize the user.

Correct Answer: ABD

Section: (none)

Explanation

Explanation/Reference:

QUESTION 6

Which of the following descriptions regarding eSight is not correct?

- A. eSight is used to monitor and manage enterprise networks.
- B. eSight supports only Huawei devices.
- C. eSight supports WLAN management and monitoring of hotspot coverage.
- D. eSight supports the backup of configuration files and network traffic analysis.

Correct Answer: B

Section: (none)

Explanation

Explanation/Reference:

QUESTION 7

What of the following statements is correct regarding access control list types and ranges?

- A. A basic ACL value ranges from 1000-2999
- B. An advanced ACL value ranges from 3000-4000
- C. A layer 2 ACL value ranges from 4000-4999
- D. An interface ACL value ranges 1000-2000

Correct Answer: C

Section: (none)

Explanation

Explanation/Reference:

QUESTION 8

Which of the following parameters is not used by Advanced ACL?

- A. Source interface
- B. Destination port number
- C. Protocol number
- D. Time-range

Correct Answer: A

Section: (none)

Explanation

Explanation/Reference:

QUESTION 9

```
[RTA]acl 2001
[RTA-acl-basic-2001]rule permit source 10.0.1.0 0.0.0.255
[RTA-acl-basic-2001]rule deny source 10.0.1.0 0.0.0.255
```

Refer to the configuration output. Which of the following statements regarding ACL 2001 is correct?

- A. Packets from network 10.0.1.0/24 network will be denied.
- B. Packets from network 10.0.1.0/24 network will be permitted.
- C. Packets destined for network 10.0.1.0/24 will be denied.
- D. Packets destined for network 10.0.1.0/24 will be permitted.

Correct Answer: B

Section: (none)

Explanation

Explanation/Reference:

QUESTION 10

```
[RTA]acl 2002
[RTA-acl-basic-2002]rule permit source 20.1.1.1 0
[RTA-acl-basic-2002]rule permit source 30.1.1.1 0
```

Refer to the configuration output. A network administrator configured the ACL on router RTA, as shown.

Which of the following statements regarding the rule order are correct? (Choose two).

- A. The rule-number of the first rule is 1
- B. The rule-number of the first rule is 5
- C. The rule-number of the second rule is 2
- D. The rule-number of the second rule is 10

Correct Answer: BD

Section: (none)

Explanation

Explanation/Reference:

QUESTION 11

Following a failure of services in the network, an administrator discovered that the configuration in one of the enterprise routers had been changed.

What actions can be taken by the administrator to prevent further changes? (Choose three)

- A. The administrator should limit access by setting the login privilege of users to 0.
- B. The administrator should configure AAA to manage user authorization on the router.
- C. The administrator should configure an ACL to allow only the administrator to manage the router.
- D. The administrator should configure port-security on the router.

Correct Answer: ABC

Section: (none)

Explanation

Explanation/Reference:

QUESTION 12

```
[RTA]acl 2001
```

```
[RTA-acl-basic-2001]rule 20 permit source 20.1.1.0 0.0.0.255
```

```
[RTA-acl-basic-2001]rule 10 deny source 20.1.1.0 0.0.0.255
```

Refer to the configuration output. Which of the following statements is correct regarding the configuration of the ACL on RTA?

- A. Packets from network 20.1.1.0/24 network will be denied.
- B. Packets from network 20.1.1.0/24 network will be permitted.
- C. Packets destined for network 20.1.1.0/24 will be denied.
- D. Packets destined for network 20.1.1.0/24 will be permitted.

Correct Answer: A

Section: (none)

Explanation

Explanation/Reference:

QUESTION 13

```
[RTA]acl 2001
[RTA-acl-basic-2001]rule deny source 172.16.1.1 0.0.0.0
[RTA-acl-basic-2001]rule deny source 172.16.0.0 0.255.0.0
```

Refer to the configuration output. Which of the following statements are correct regarding the configuration of the ACL on RTA? (Choose two).

- A. Packets from network 172.16.1.1/32 will be denied.
- B. Packets from network 172.16.1.0/24 will be denied.
- C. Packets from network 172.17.1.0/24 will be denied.
- D. Packets from network 172.18.0.0/16 will be denied.

Correct Answer: AD

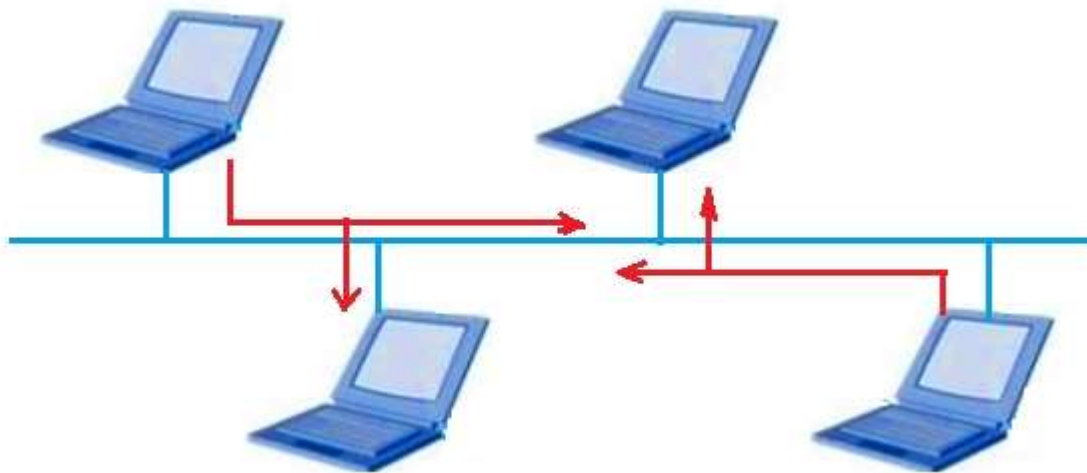
Section: (none)

Explanation

Explanation/Reference:

QUESTION 14

The network administrator wants to improve the performance of network transmission, what steps can the administrator take? (Choose two)



- A. Change the work mode to full duplex of each end station.
- B. Link the end stations together using a switch.
- C. Change the work mode to half duplex of each end station.
- D. Link the end stations together using a hub.

Correct Answer: AB

Section: (none)

Explanation

Explanation/Reference:

QUESTION 15

On Huawei switch, which of the following commands can be used to set port duplex mode as "auto"

negotiation"? (Choose two)

- A. duplex negotiation auto
- B. duplex auto-negotiation
- C. duplex auto
- D. undo duplex

Correct Answer: CD

Section: (none)

Explanation

Explanation/Reference:

QUESTION 16

The network administrator wishes to transmit data between two end stations. The network interface cards of both devices operates at 100Mbps however one supports half duplex while the other uses full duplex mode.

What will occur as a result?

- A. The end stations cannot communicate.
- B. The end stations can communicate, but data may be lost during transmission of large amounts of traffic.
- C. The end stations will operate normally
- D. The end stations can communicate, but speed is different during transmission of large amounts of traffic.

Correct Answer: B

Section: (none)

Explanation

Explanation/Reference:

QUESTION 17

An Ethernet port can work one of three duplex modes, whereas an Optical Ethernet port only supports one single mode.

Which of the following represents this mode?

- A. Full-duplex
- B. Half-duplex
- C. Auto-negotiation
- D. Simplex

Correct Answer: A

Section: (none)

Explanation

Explanation/Reference:

QUESTION 18

While inspecting packets in the network, a network administrator discovers a frame with the destination MAC address of 01-00-5E-A0-B1-C3.

What can the administrator determine from this?

- A. The MAC address is a unicast address.
- B. The MAC address is a broadcast address
- C. The MAC address is a multicast address.
- D. The MAC address is incorrect.

Correct Answer: C

Section: (none)

Explanation

Explanation/Reference:

QUESTION 19

According to OSI reference model, which layer is responsible for end to end error checking and flow control?

- A. Physical layer
- B. Data link layer
- C. Network layer
- D. Transport layer

Correct Answer: D

Section: (none)

Explanation

Explanation/Reference:

QUESTION 20

Which of the following mechanisms are used for flow control? (Choose three)

- A. Acknowledgement
- B. Buffering
- C. Source quench messages
- D. Windowing

Correct Answer: BCD

Section: (none)

Explanation

Explanation/Reference:

QUESTION 21

Source Destination Protocol Info

```
10.0.12.1 10.0.12.2 TCP 50190 > telnet [SYN] Seq=0 Win=8192 Len=0 MSS=1460
```

```
10.0.12.2 10.0.12.1 TCP telnet> 50190 [SYN, ACK] Seq=0 Ack=1 Win=8192 Len=0  
MSS=1460
```

```
10.0.12.1 10.0.12.2 TCP 50190 > telnet [ACK] Seq=1 Ack=1 Win=8192 Len=0
```

Refer to the capture output. The administrator has captured three packets in the network. Which statement regarding the captured packets is incorrect?

- A. This packets represent a TCP three-way handshake process.
- B. 10.0.12.1 is the telnet server, while 10.0.12.2 is the telnet client.

- C. The three packets contain no application data.
- D. 10.0.12.1 uses port 50190 to build the telnet connection.

Correct Answer: B

Section: (none)

Explanation

Explanation/Reference:

QUESTION 22

An Ethernet frame is captured by Wireshark and the value of Type/Length field is 0x0800.

Which of the following statements about the frame are correct? (Choose two)

- A. The frame format is Ethernet II
- B. The frame format is IEEE802.3
- C. Its upper layer protocol is IP
- D. Its upper layer protocol is IPX

Correct Answer: AC

Section: (none)

Explanation

Explanation/Reference:

QUESTION 23

Which of the following descriptions regarding the TTL field of the IP packet is correct?

- A. The TTL defines how many packets the source can send.
- B. The TTL defines the duration during which the source can send packets.
- C. The TTL value will decrement by 1 each time the packet is routed.
- D. The TTL value will increment by 1 each time the packet is routed.

Correct Answer: C

Section: (none)

Explanation

Explanation/Reference:

QUESTION 24

Which of the following statements are correct about TTL field in IP packet? (Choose two)

- A. The maximum value of TTL is 65535.
- B. Normally, it's impossible for a router to receive a packet whose TTL is zero.
- C. The main purpose of TTL is to prevent IP packets from circulating endlessly in a network which can consume a lot of bandwidth.
- D. TTL value will be decremented as a packet is passed through the network devices such as hub, LAN switch and router.

Correct Answer: BC

Section: (none)

Explanation

Explanation/Reference:

QUESTION 25

In the case of Huawei router, what is the "-i" parameter in a Ping command issued on a VRP operating system used to set?

- A. Interface for sending an Echo Request packet
- B. Source IP address for sending an Echo Request packet
- C. Interface for receiving an Echo Reply packet
- D. Destination IP address for receiving an Echo Reply packet

Correct Answer: A

Section: (none)

Explanation

Explanation/Reference:

QUESTION 26

To provide the information about the IP addresses that a user packet traverses along the path to the destination, which of the following does Tracert record in each expired ICMP TTL packet?

- A. Destination port
- B. Source port
- C. Destination IP address
- D. Source IP address

Correct Answer: D

Section: (none)

Explanation

Explanation/Reference:

QUESTION 27

Which of the following statements regarding the verification of IP connectivity are false? (Choose three)

- A. The ping 127.0.0.1 command can be used to check whether the network cable is correctly inserted into the host's Ethernet port.
- B. The ping command with the host IP address as the destination can be used to verify that the TCP/IP protocol suite is functioning correctly.
- C. The ping command can be used to verify connectivity between the host and the local gateway.
- D. The command "ipconfig /release" can be used to check connectivity problems between the host and the local gateway.

Correct Answer: ABD

Section: (none)

Explanation

Explanation/Reference:

QUESTION 28

A network administrator uses the ping command to check for points of failure in the network.

Which protocols will be used during this process? (Choose two)

- A. ICMP
- B. TCP
- C. ARP
- D. UDP

Correct Answer: AC

Section: (none)

Explanation

Explanation/Reference:

QUESTION 29

A network administrator recently used tracert to trace the path to the destination IP address of an external website, however the trace path displayed only a timeout result.

Which of the following statements correctly explains the reason for this? (Choose two)

- A. The source router had shutdown the ICMP function.
- B. This destination IP address does not exist.
- C. The gateway cannot find a route to the destination.
- D. This is a normal phenomenon.

Correct Answer: BC

Section: (none)

Explanation

Explanation/Reference:

QUESTION 30

```
Ping 10.0.0.2: 56 data bytes, press CTRL_C to break
Reply from 10.0.0.2: bytes=800 Sequence=1 ttl=255 time=2 ms
Reply from 10.0.0.2: bytes=800 Sequence=2 ttl=255 time=10 ms
--- 10.0.0.2 ping statistics ---
 2 packet(s) transmitted
 2 packet(s) received
 0.00% packet loss
 round-trip min/avg/max = 2/6/10 ms
```

A network administrator uses the ping command to test connectivity to the destination 10.0.0.2 on a Huawei AR series router.

Which statement regarding the output is correct?

- A. The network administrator used the command ping -c 2 -s 800 10.0.0.2
- B. The network administrator used the command ping -a 2 -v 800 10.0.0.2
- C. The path between the source and destination is not OK.
- D. The network administrator changed the default TTL value.

Correct Answer: A

Section: (none)
Explanation

Explanation/Reference:

QUESTION 31

Which of the following statements explains the behavior of the ICMP redirect function? (Choose two)

- A. When a router receives data on the interface via which the same data needs to be forwarded, and the source is on the same segment as the next hop, an ICMP redirect message will be sent by the router to the source.
- B. When a router receives data on an interface, and the router's IP address matches the destination IP of the data, an ICMP redirect message will be sent by the router to the source.
- C. When a router receives data on the interface via which the same data needs to be forwarded, and the source is on the same segment as the next hop, an ICMP Redirect message will be sent by the source to the router.
- D. When a router receives data on the interface via which the same data needs to be forwarded, and the source is on a different segment from the next hop, an ICMP redirect message will be sent by the router to the source

Correct Answer: AD

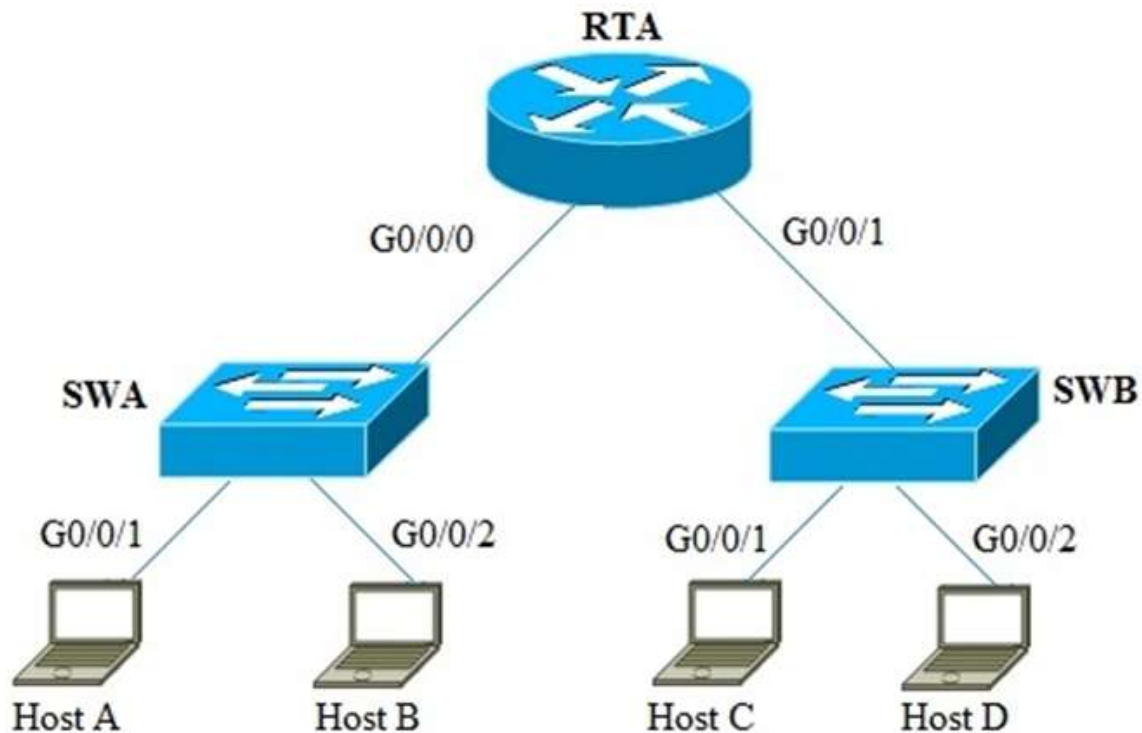
Section: (none)

Explanation

Explanation/Reference:

QUESTION 32

Host A wishes to send data to host C, and generates an ARP request to obtain the destination MAC address.



Which statement is true?

- A. The destination IP address of the ARP request is Host C.
- B. The destination MAC address of this ARP request is Host C.
- C. The destination IP address for the ARP request is a broadcast IP address.
- D. The destination MAC address of this frame is the MAC address of G0/0/0 on RTA.

Correct Answer: A

Section: (none)

Explanation

Explanation/Reference:

QUESTION 33

An ARP request is sent by host A to obtain the destination MAC address of host D.

Which statement is true about regarding the ARP reply?

- A. The destination MAC address of this frame is the MAC address of Switch A.
- B. The destination IP address of this packet is the VLANIF1 IP address of Switch A.
- C. The destination MAC address of this frame is the MAC address of Host A.
- D. The destination IP address of this packet is a broadcast IP address.

Correct Answer: C

Section: (none)

Explanation

Explanation/Reference:

QUESTION 34

Which of the following applications can be used to detect the path along which the data packets are transmitted from the source to the destination?

- A. Route
- B. Netstat
- C. Tracert
- D. Send

Correct Answer: C

Section: (none)

Explanation

Explanation/Reference:

QUESTION 35

How many probe packets are sent for each TTL value by default when "tracert" is used to detect the path along which packet is sent from source to destination?

- A. 3
- B. 4
- C. 6
- D. 8

Correct Answer: A
Section: (none)
Explanation

Explanation/Reference:

QUESTION 36

Which of the following types can ICMP packets be classified into? (Choose two)

- A. ICMP transport packet
- B. ICMP error reporting packet
- C. ICMP query packet
- D. ICMP application packet

Correct Answer: BC
Section: (none)
Explanation

Explanation/Reference:

QUESTION 37

On VRRP platform, which of the following parameters can be used together with the "ping" command to specify the source address of an echo request message?

- A. -a
- B. -s
- C. -d
- D. -n

Correct Answer: A
Section: (none)
Explanation

Explanation/Reference:

QUESTION 38

A router functioning as a Proxy receives an ARP request packet, but finds that the destination address in the packet is not intended for itself. In this case, what will the router do? (Choose two)

- A. Discard the packet.
- B. Check for a route that matches the destination address.
- C. Forward its MAC address to the ARP request sender after finding that a route to the destination address is available.
- D. Broadcast the ARP request packet.

Correct Answer: BC
Section: (none)
Explanation

Explanation/Reference:

QUESTION 39

Two end stations in a point-to-point network perform address resolution.

Which of the following statements is correct?

- A. The destination address of an ARP request from each station will be a unicast MAC address.
- B. The destination address of an ARP request from each station will be a broadcast IP address.
- C. The destination address of an ARP reply from each station will be a unicast MAC address.
- D. The destination address of an ARP reply from each station will be a broadcast MAC address.

Correct Answer: C

Section: (none)

Explanation

Explanation/Reference:

QUESTION 40

What will the destination MAC address be at the moment a frame is transmitted by the host, when the router is the IP destination?

- A. The MAC address of the switch.
- B. The MAC address of the router interface G0/0/0.
- C. The MAC address of the host.
- D. The destination MAC address will be a broadcast MAC address.

Correct Answer: D

Section: (none)

Explanation

Explanation/Reference:

QUESTION 41

Which of the following statements about gratuitous ARP packets are true? (Choose two)

- A. A system can determine whether conflicting IP addresses are used by sending a gratuitous ARP packet
- B. A gratuitous ARP packet uses the same format as an ARP request packet.
- C. A gratuitous ARP packet can help to update an IP address.
- D. A gratuitous ARP packet uses the same format as an ARP reply packet.

Correct Answer: AB

Section: (none)

Explanation

Explanation/Reference:

QUESTION 42

UDP is connectionless oriented, which of the following must be used in order to ensure reliability?

- A. Internet Protocol
- B. Application Layer Protocol
- C. Network Layer Protocol
- D. Transmission Control Protocol

Correct Answer: B
Section: (none)
Explanation

Explanation/Reference:

QUESTION 43

Refer to the graphic.



The administrator has configured an IP address for Host A and Host B, but had forgotten to configure a default gateway.

What effect will this have on the hosts?

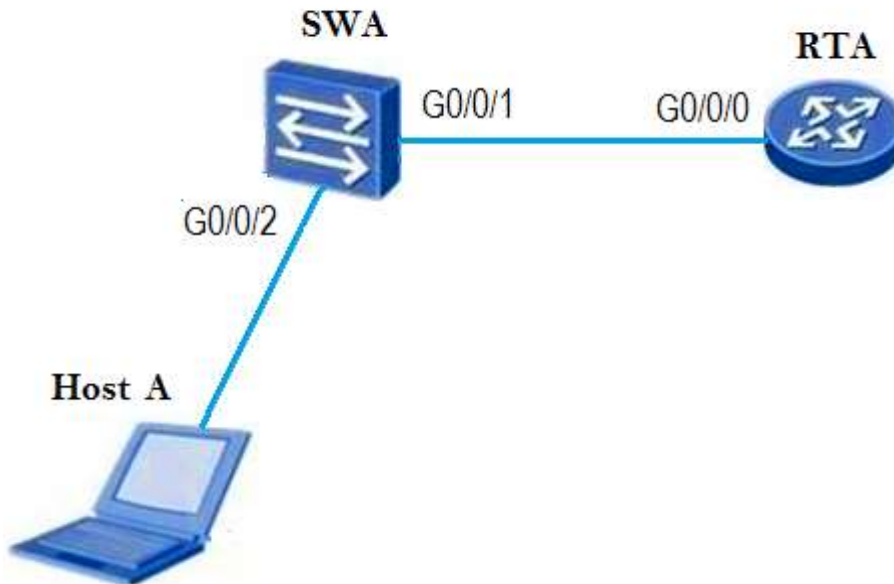
- A. Neither host will be affected, and therefore will be able to communicate with the peer.
- B. Host A will be unable to connect to the router's G0/0/0 interface.
- C. Hosts will be unable to communicate unless arp-proxy is enabled on the router.
- D. The host will be unable to reach neither the local nor remote network destinations.

Correct Answer: C
Section: (none)
Explanation

Explanation/Reference:

QUESTION 44

Refer to the graphic.



A host has established a telnet connection with the router attached to interface G0/0/0.

Which of the following statements are correct? (Choose all that apply.)

- A. The destination MAC address of a frame sent by the host will be the MAC address of the router interface G0/0/0.
- B. The destination MAC address of a frame sent by the host will be the MAC address of the switch.
- C. The destination port number in a segment header will have a value of 80.
- D. The destination IP address of a packet will be the IP address of the Router interface G0/0/0.

Correct Answer: AD

Section: (none)

Explanation

Explanation/Reference:

QUESTION 45

The administrator uses the ping command on the host to test connectivity to the website www.huawei.com.

The command line shows a request time out. The administrator displays the ARP entries for the host.

Which entry will be found in the ARP cache table of the host?

- A. The MAC address of the destination www.huawei.com will exist in the ARP cache.
- B. The MAC address of the switch will exist in the ARP cache.
- C. The IP address of the destination www.huawei.com will exist in the ARP cache.
- D. The MAC address of router interface G0/0/0, will exist in the ARP cache.

Correct Answer: D

Section: (none)

Explanation

Explanation/Reference:

QUESTION 46

When R2 forwards data to R3 from R1, which of the following items will change? (Choose two)

- A. The source MAC address
- B. The destination MAC address
- C. The source IP address
- D. The destination IP address

Correct Answer: AB

Section: (none)

Explanation

Explanation/Reference:

QUESTION 47

If Host B also configured the IP address as "192.168.1.1/24", an IP address conflict will occur. What will happen as a result?

- A. Host B will send an ICMP request to the destination with the configured IP address. If a reply is received, the host will notify of an address conflict.
- B. Host A will send a gratuitous ARP request to resolve the MAC address of the destination 192.168.1.1, for which Host B will reply.
- C. Host B will send a gratuitous ARP request to resolve the MAC address of the destination 192.168.1.1, for which Host A will reply.
- D. Host A will ignore any received ARP request intended for destination 192.168.1.1.

Correct Answer: C

Section: (none)

Explanation

Explanation/Reference:

QUESTION 48

```
<Quidway>display mac-address
```

```
-----  
MAC Address VLAN/VSI Learned-From Type
```

```
-----  
5489-98ec-f018 1/- GE0/0/13 dynamic
```

```
-----  
Total items displayed = 1
```

Refer to the graphic. A switch attempts to forward a frame to the MAC destination 5489-98ec-f011. What operation will occur on the switch?

- A. The switch will send a request to obtain the MAC address of 5489-98ec-f011.
- B. The switch will report that the destination is unreachable and report this to the source.
- C. The switch will flood the frame via all ports, with exception of the port on which the frame was received.
- D. The switch will drop the frame because it does not have an entry in its MAC address table.

Correct Answer: C

Section: (none)

Explanation

Explanation/Reference:

QUESTION 49

Host A has been connected to a four port switch A on port G0/0/1 and configured with an IP address.

When Host A initially forwards a frame, what action will be taken by Switch A?

- A. Switch A will drop this frame.
- B. Switch A will attempt to flood the frame to all ports except for the G0/0/1 interface.
- C. Switch A will forward the frame via ports G0/0/1, G0/0/2 and G0/0/3.
- D. Switch will receive this frame before returning the frame to G0/0/1.

Correct Answer: B

Section: (none)

Explanation

Explanation/Reference:

QUESTION 50

A server is linked to port interface G0/0/1 of a switch. The administrator wishes to allow only this server to be linked to this interface on the switch.

Which method can be used to achieve this?

- A. Configure a static ARP entry using the server's IP address and MAC address in the switch.
- B. Configure a static MAC address binding entry of the server's MAC address and the interface in the switch.
- C. Configure the default gateway of the switch to be the same as the server's IP address.
- D. It is not possible to enable a single device to be associated with an interface.

Correct Answer: B

Section: (none)

Explanation

Explanation/Reference:

QUESTION 51

An administrator connects two switches together in a local enterprise network. The ports of one switch support Fast Ethernet, while the ports of the other switch support Gigabit Ethernet. Hosts connected to one switch are able to communicate, however communication between the two switches fails.

What is the possible reason for this?

- A. The ports have disabled auto-negotiation.
- B. One port is supporting auto-negotiation, while auto-negotiation is disabled on the port of the other switch.
- C. The port of one switch is operating using half duplex mode, while the port of the other switch is using full duplex mode.
- D. A Fast Ethernet port cannot communicate directly with a Gigabit Ethernet port.

Correct Answer: A

Section: (none)

Explanation

Explanation/Reference:

QUESTION 52

A layer 2 LAN switch generates CAM table entries according to the () of the received frame.

- A. Source MAC address
- B. Destination MAC address
- C. Source IP address
- D. Destination IP address

Correct Answer: A

Section: (none)

Explanation

Explanation/Reference:

QUESTION 53

Which of the following statements about collision domains and broadcast domains are correct? (Choose three)

- A. Devices connected to the same hub form a collision domain
- B. Devices connected to the same hub form a broadcast domain
- C. Devices connected to the same bridge form a collision domain
- D. Devices connected to the same bridge form a broadcast domain
- E. Devices connected to the same router form a broadcast domain

Correct Answer: ABD

Section: (none)

Explanation

Explanation/Reference:

QUESTION 54

Which of the following statements regarding layer-2 switch is incorrect?

- A. The switch learns MAC addresses automatically.
- B. The layer-3 header is modified before the received packet is transmitted.
- C. The layer-2 header is modified before the received packet is transmitted.
- D. The layer-2 LAN switch operates at data link layer.

Correct Answer: B

Section: (none)

Explanation

Explanation/Reference:

QUESTION 55

```
[R1]display interface GigabitEthernet0/0/0
GigabitEthernet0/0/0 current state : Administratively DOWN
Line protocol current state : DOWN
```

Refer to the display output. What can be determined based on the output of the display command?

- A. Interface Gigabit Ethernet 0/0/0 is connected to a wrong cable
- B. Interface Gigabit Ethernet 0/0/0 is not associated with an IP address
- C. Interface Gigabit Ethernet 0/0/0 is not associated with a dynamically defined route.
- D. Interface Gigabit Ethernet 0/0/0 has been manually shut down by an administrator.

Correct Answer: D

Section: (none)

Explanation

Explanation/Reference:

QUESTION 56

Which of the following statements regarding static and dynamic routing is incorrect?

- A. The static route can be easily configured and managed on the enterprise network.
- B. The use of dynamic routing is more convenient for the administrator to manage the network following network convergence.
- C. The static route can automatically recover when a link failure is encountered.
- D. Dynamic routing will use more resources than static routes.

Correct Answer: C

Section: (none)

Explanation

Explanation/Reference:

QUESTION 57

Which of the following are routed protocols? (Choose all that apply.)

- A. IP
- B. OSPF
- C. BGP
- D. IPX

Correct Answer: AD

Section: (none)

Explanation

Explanation/Reference:

QUESTION 58

Which of the following statements regarding the routing table are correct? (Choose all that apply.)

- A. The next hop in the routing table is redundant because the outgoing interface can be used for packet forwarding.

- B. The routes from generated by different protocols have different preferences.
- C. The metrics of different routing protocols are comparable.
- D. The metrics of different routing protocols are not comparable

Correct Answer: BD

Section: (none)

Explanation

Explanation/Reference:

QUESTION 59

Which of the following commands can be used to display the routing table on a Quidway router?

- A. display ip path
- B. display ip routing-table
- C. display interface
- D. display current-configuration

Correct Answer: B

Section: (none)

Explanation

Explanation/Reference:

QUESTION 60

Which of the following entries is not included in the routing table?

- A. source address
- B. next hop
- C. destination address
- D. cost

Correct Answer: A

Section: (none)

Explanation

Explanation/Reference:

QUESTION 61

Which of the following problems are caused by routing loops? (Choose three)

- A. Slow convergence
- B. Packets circulate between routers
- C. Router restarting
- D. Inconsistency of routing information

Correct Answer: ABD

Section: (none)

Explanation

Explanation/Reference:

QUESTION 62

An administrator wishes to manage the router in the remote branch office, which method can be used?

- A. Telnet
- B. FTP
- C. Console Connection
- D. DHCP

Correct Answer: A

Section: (none)

Explanation

Explanation/Reference:

QUESTION 63

The administrator cannot use telnet to manage the AR2200. The administrator is able to verify connectivity to the router and has been informed that other administrators have no difficulties using telnet.

Which statements describe the possible reasons for this problem? (Choose all that apply.)

- A. The user's status has been blocked
- B. The user's privilege level has been changed to 0.
- C. The user has been deleted.
- D. The telnet service in the AR2200 router has been disabled.

Correct Answer: AC

Section: (none)

Explanation

Explanation/Reference:

QUESTION 64

A user logged into a VRP supported device through telnet, but when attempting to configure the device, found that he is unable to use the system-view command to enter the system-view.

What are the possible reasons for this? (Choose two)

- A. The device's VTY interface only provides permission for some telnet users to run the system-view command.
- B. The user's telnet software restricts use of this command.
- C. The user's privilege level is lower than the level associated with the system-view command.
- D. The system-view command privilege level is lower than the level associated with the user.

Correct Answer: AC

Section: (none)

Explanation

Explanation/Reference:

QUESTION 65

The users who log on the router through Telnet are not permitted to configure IP address.

What is the possible reason?

- A. Communication failures occur between the user and the router.
- B. The authentication mode of Telnet is set incorrectly.
- C. Privilege level of Telnet is set incorrectly.
- D. SNMP parameters are set incorrectly.

Correct Answer: C

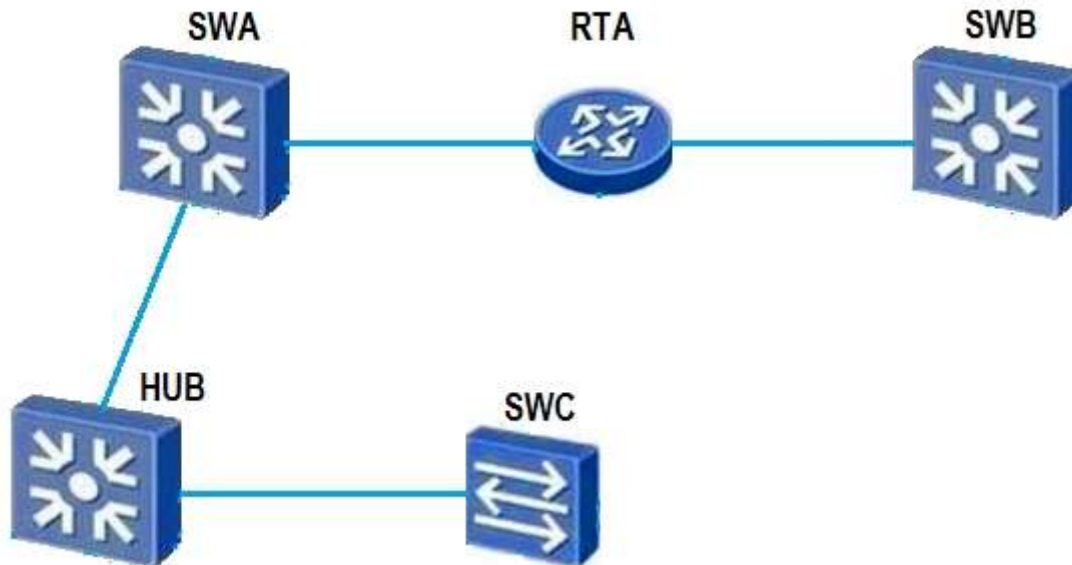
Section: (none)

Explanation

Explanation/Reference:

QUESTION 66

Which of the following statements are correct? (Choose two)



- A. A single collision domain exists between RTA and SWC.
- B. A single broadcast domain exists between SWA and SWB.
- C. A single collision domain exists between SWA and SWC.
- D. A single broadcast domain exists between SWA and SWC.

Correct Answer: CD

Section: (none)

Explanation

Explanation/Reference:

QUESTION 67

On the interface serial 1/0/1 of RTA, the command “ip address unnumbered interface loopback 0” has been configured.



Which following statements are correct? (Choose two).

- A. The IP address of interface serial 1/0/1 is 10.1.1.1/24
- B. The IP address of interface serial 1/0/1 is 10.1.1.1/32
- C. The route entry 10.1.1.0/24 exists in RTA's routing-table
- D. The route entry 10.1.1.0/24 does not exist in RTA's routing-table

Correct Answer: BD

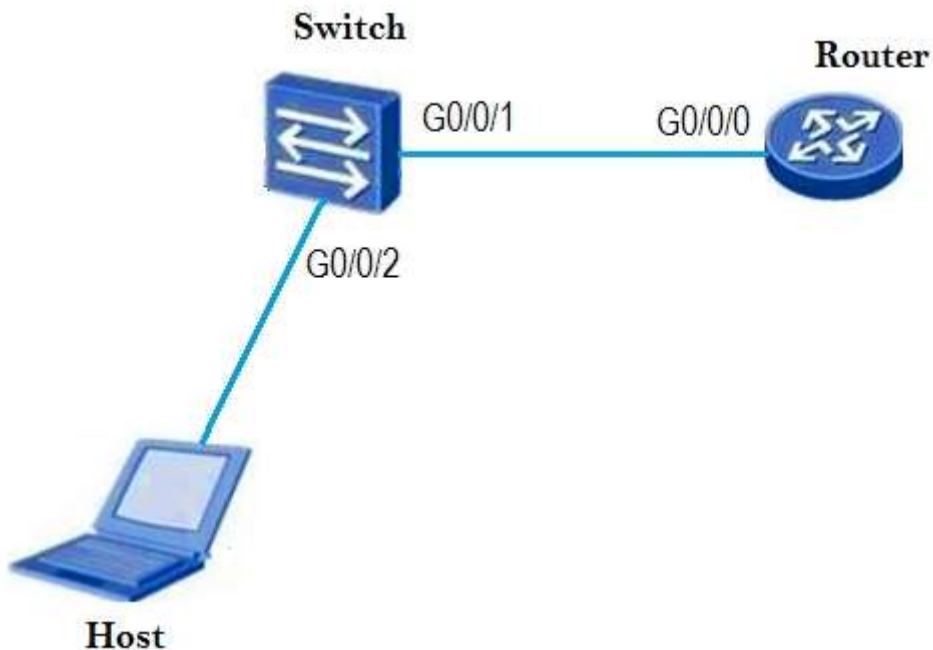
Section: (none)

Explanation

Explanation/Reference:

QUESTION 68

Refer to the graphic.



The host has a problem establishing a telnet connection with the router attached to interface G0/0/0. Which of the following steps can be used to help the administrator identify the problem? (Choose two)

- A. Check whether the host has configured the gateway IP address.
- B. Check whether the switch has configured the gateway IP address.

- C. Use the ping tool to check connectivity between host and router.
- D. Check the telnet server configuration is right on the router.

Correct Answer: CD

Section: (none)

Explanation

Explanation/Reference:

QUESTION 69

Which of the following methods are supported by VRP platform to configure the router? (Choose three)

- A. Through the Console port
- B. Through Telnet
- C. Through the AUX port
- D. Through FTP

Correct Answer: ABC

Section: (none)

Explanation

Explanation/Reference:

QUESTION 70

The administrator wishes to update the configuration file of an AR2200 router using a USB cable.

How can this be achieved? (Choose all that apply.)

- A. The administrator should connect the USB cable between the terminal and the mini USB port of the AR2200 router.
- B. The administrator should connect the USB cable between the terminal and the USB port of the AR2200 router.
- C. The AR2200 router cannot support configuration updates through a USB cable.
- D. The administrator should install the mini USB drivers on the terminal after connecting the USB.

Correct Answer: AD

Section: (none)

Explanation

Explanation/Reference:

QUESTION 71

The administrator wishes to manage a network through telnet from a user's terminal to a router.

How can this be achieved?

- A. A connection should be established between the ethernet port of the terminal and the console port of the router.
- B. A connection should be established between the ethernet port of the terminal and the ethernet port of the router.
- C. A connection should be established between the console port of the terminal and the ethernet port of the router. use console cable connect pc's ethernet port and router's console port.
- D. A connection should be established between the COM port of the terminal and the console port of the

router.

Correct Answer: B

Section: (none)

Explanation

Explanation/Reference:

QUESTION 72

Whilst configuring a device, an administrator experiences trouble remembering certain commands.

Which of the following will help support the administrator? (Choose two)

- A. TAB
- B. question mark
- C. ctrl+b
- D. ctrl+c

Correct Answer: AB

Section: (none)

Explanation

Explanation/Reference:

QUESTION 73

```
<Huawei> system-view
[Huawei] user-interface console 0
[Huawei-ui-console0] user privilege level 15
[Huawei-ui-console0] authentication-mode password
[Huawei-ui-console0] set authentication password cipher huawei2012
[Huawei-ui-console0] quit
```

Refer to the configuration output. The administrator configured the device using the commands in the configuration output. Regarding these commands, which statement is false?

- A. The administrator wishes to enable management through the console interface.
- B. Following configuration, the administrator cannot manage the device remotely.
- C. A user that logs-in through the console interface is assigned the highest privilege level.
- D. The password of a user logged in through console is 'cipher huawei2012'.

Correct Answer: D

Section: (none)

Explanation

Explanation/Reference:

QUESTION 74

Which of the following is abbreviation of VRP?

- A. Versatile Routine Platform
- B. Virtual Routing Platform

- C. Virtual Routing Plane
- D. Versatile Routing Platform

Correct Answer: D

Section: (none)

Explanation

Explanation/Reference:

QUESTION 75

Which of the following must be used to establish the configuration environment when a router is powered on for the first time?

- A. SSL
- B. SSH
- C. Console port
- D. Telnet

Correct Answer: C

Section: (none)

Explanation

Explanation/Reference:

QUESTION 76

Which of the following parameter settings for terminal emulation are correct when configuring a Huawei router through the Console port?

- A. 4800bps, 8 data bits, 1 stop bits, odd parity check, and no flow control
- B. 9600bps, 8 data bits, 1 stop bits, no parity check, and no flow control
- C. 9600bps, 8 data bits, 1 stop bits, even parity check, and hardware flow control
- D. 19200bps, 8 data bits, 1 stop bits, no parity check, and no flow control

Correct Answer: B

Section: (none)

Explanation

Explanation/Reference:

QUESTION 77

Which of the following commands is used to enter the system-view from the user view on a Huawei router?

- A. system-view
- B. enable
- C. configure terminal
- D. interface system

Correct Answer: A

Section: (none)

Explanation

Explanation/Reference:

QUESTION 78

On VRP platform, the command lines are classified into four levels in increasing priority: Visit level, Monitoring level, Configuration level, and Management level. At which level, the operator is permitted to configure service but is not permitted to operate the file system?

- A. Visit level
- B. Monitoring level
- C. Configuration level
- D. Management level

Correct Answer: C

Section: (none)

Explanation

Explanation/Reference:

QUESTION 79

On Huawei VRP platform, which of the following can be used to invoke the history command saved by the command line interface? (Choose two)

- A. Up cursor key < >
- B. Left cursor key < >
- C. Ctrl+P
- D. Ctrl+U

Correct Answer: AC

Section: (none)

Explanation

Explanation/Reference:

QUESTION 80

Which of the following commands can be used to view the current configurations on a Huawei router?

- A. display current-configuration
- B. display saved-configuration
- C. view saved-configuration
- D. show startup-configuration

Correct Answer: A

Section: (none)

Explanation

Explanation/Reference:

QUESTION 81

The administrator wishes to change name of the router. Under which view should the administrator be in order to achieve this?

- A. User-view
- B. System-view

- C. Interface-view
- D. Protocol-view

Correct Answer: B

Section: (none)

Explanation

Explanation/Reference:

QUESTION 82

<Huawei> system-view

[Huawei]command-privilege level 3 view user save

Refer to the command output. What is the result of the shown command?

- A. The command adjusts the save command of a user to privilege level 3.
- B. The command adjusts the save command in the user view to privilege level 3.
- C. The command adjusts the user view command privilege level to 3, and saves the configuration.
- D. The command adjusts the privilege level of a user to 3, and saves the configuration.

Correct Answer: B

Section: (none)

Explanation

Explanation/Reference:

QUESTION 83

<Huawei>system-view

[Huawei]history-command max-size 20

Refer to the command output. Which statements regarding the shown command are true? (Choose two)

- A. The command is used to adjust the size of the history command buffer.
- B. The default value of the history command buffer is 5.
- C. The command should be configured in the user-interface view.
- D. Once configured, commands totaling up to 20 bytes can be saved in the buffer.

Correct Answer: AC

Section: (none)

Explanation

Explanation/Reference:

QUESTION 84

An AR2200 router is required to be reconfigured from scratch. Which steps are needed to achieve this? (Choose all that apply.)

- A. Reset the saved configuration.
- B. Clear the current configuration.
- C. Reboot the AR2200.
- D. Assign the configuration file to be used at next startup.

Correct Answer: AC

Section: (none)

Explanation

Explanation/Reference:

QUESTION 85

An administrator has been requested to replace the configuration file of a router in the network. The administrator has been instructed that after logging into the router, he must first permanently erase the current configuration file config.zip from the system.

Which command should he use to achieve this?

- A. delete /force config.zip
- B. delete /unreserved config.zip
- C. reset config.zip
- D. clear config.zip

Correct Answer: B

Section: (none)

Explanation

Explanation/Reference:

QUESTION 86

Which of the following commands can switch a view from the system view to the user view?

- A. System-view
- B. Router
- C. Quit
- D. User-view

Correct Answer: C

Section: (none)

Explanation

Explanation/Reference:

QUESTION 87

Which of the following storage devices are supported by Huawei router? (Select four)

- A. SDRAM
- B. NVRAM
- C. Flash
- D. Hard Disk
- E. CF Card

Correct Answer: ABCE

Section: (none)

Explanation

Explanation/Reference:

QUESTION 88

Which of the following storage devices is used to store the startup configuration files in a router?

- A. SDRAM
- B. NVRAM
- C. Flash
- D. BootROM

Correct Answer: B

Section: (none)

Explanation

Explanation/Reference:

QUESTION 89

<Huawei>reset saved-configuration

Warning: The action will delete the saved configuration in the device.

The configuration will be erased to reconfigure. Continue? [Y/N]:

Refer to the configuration output. Which of the following statements are true? (Select two answers)

- A. A user should enter 'Y' when wishing to clear the saved configuration file.
- B. The saved-configuration file that the device starts with can be erased.
- C. The saved-configuration will be deleted after typing N
- D. The saved-configuration file will be replaced with the current-configuration.

Correct Answer: AB

Section: (none)

Explanation

Explanation/Reference:

QUESTION 90

When a router is powered on, the router reads the configuration file saved in the default save directory to get itself initialized. If the configuration file does not exist in the default save directory, what does the router use to initialize itself?

- A. New configuration file
- B. Initial configuration file
- C. Default parameters
- D. Current configuration file

Correct Answer: C

Section: (none)

Explanation

Explanation/Reference:

QUESTION 91

```
<Huawei>display startup
MainBoard:
Startup system software: sd1:/ar2220-v200r003c00spc200.cc
Next startup system software: sd1:/ar2220-v200r003c00spc200.cc
Backup system software for next startup: null
Startup saved-configuration file: null
Next startup saved-configuration file: null
Startup license file: null
Next startup license file: null
Startup patch package: null
Next startup patch package: null
Startup voice-files: null
Next startup voice-files: null
```

Refer to the display output. Which statement is false?

- A. The current configuration file has not been saved.
- B. The current startup system software is ar2220-v200r003c00spc200.cc
- C. The next startup system software cannot be changed.
- D. The next startup system software can be changed by using the "startup system software <startup-softwarename>.cc" command.

Correct Answer: C

Section: (none)

Explanation

Explanation/Reference:

QUESTION 92

```
<Huawei>
```

Warning: Auto-Config is working. Before configuring the device, stop Auto-Config. If you perform configurations when Auto-Config is running, the DHCP, routing, DNS, and VTY configurations will be lost. Do you want to stop Auto-Config? [y/n]:

When an administrator first initializes the router, a warning is displayed. Which statement regarding this warning is correct?

- A. If Auto-Config is required, the administrator should select 'y'.
- B. If Auto-Config is not required, the administrator should select 'n', for which subsequent configuration of the DHCP server, routing, DNS server and VTY user configuration is lost.
- C. When a device is started for the first time, the Auto-Config function is active.
- D. When a device is started for the first time, the Auto-Config function is inactive.

Correct Answer: C

Section: (none)

Explanation

Explanation/Reference:

QUESTION 93

An AR2200 router in the company network cannot boot. In order to resolve this, the administrator wishes to update the VRP software.

What should he/she do?

- A. The administrator should use a console cable to connect the router and host, and directly upgrade the device.
- B. The administrator should use FTP to transfer the VRP software, by configuring the AR2200 router as an FTP client.
- C. The administrator should use DHCP to boot the AR2200, and then use the AR2200 router as a TFTP client to download the VRP software from the server.
- D. The administrator should use the telnet command on the client to remote access the device, and upgrade the VRP software.

Correct Answer: B

Section: (none)

Explanation

Explanation/Reference:

QUESTION 94

<Huawei>

Warning: Auto-Config is working. Before configuring the device, stop Auto-Config. If you perform configurations when Auto-Config is running, the DHCP, routing, DNS, and VTY configurations will be lost. Do you want to stop Auto-Config? [y/n]:

Refer to the output. When the administrator first starts the router, a system notice is displayed, however after rebooting this router, the notice disappeared. What is the reason for this? (Choose all that apply.)

- A. This notice only appears during the very first device startup.
- B. The administrator has configured the device and saved the configuration, causing the notice to disappear.
- C. The administrator selected 'n' and did not save the configuration.
- D. The administrator selected 'y' and saved the configuration.

Correct Answer: BD

Section: (none)

Explanation

Explanation/Reference:

QUESTION 95

An end system is unable to communicate with a DHCP server following the startup process.

Which IP address may be used by the client?

- A. 0.0.0.0
- B. 127.0.0.1
- C. 169.254.2.33
- D. 255.255.255.255

Correct Answer: C

Section: (none)

Explanation

Explanation/Reference:

QUESTION 96

```
[Huawei]ip pool pool1
```

Info: It's successful to create an IP address pool.

```
[Huawei-ip-pool-pool1]network 10.10.10.0 mask 255.255.255.0
```

```
[Huawei-ip-pool-pool1]gateway-list 10.10.10.1
```

Refer to the configuration output. The administrator wishes to configure the DHCP server pool in order to assign an IP address to the customer's terminal device.

Which command should be included in the configuration to provide the minimal lease period for IP addresses?

- A. dhcp select relay
- B. lease day 1
- C. lease 24
- D. lease 0

Correct Answer: B

Section: (none)

Explanation

Explanation/Reference:

QUESTION 97

A DHCP server has been established in the enterprise network. After the client has obtained an IP address from the DHCP server, the user decided to modify the IP address manually.

In what way may this affect the enterprise network? (Choose two).

- A. The client may experience an IP address conflict.
- B. The client may access the network normally.
- C. The client's interface connection will shutdown.
- D. The client will associate with another DHCP server.

Correct Answer: AB

Section: (none)

Explanation

Explanation/Reference:

QUESTION 98

A DHCP server in the enterprise network is being used to allocate IP addresses to hosts. An administrator discovers however that some hosts are obtaining IP addresses outside of the scope of the DHCP server's address pool.

What are the possible reasons for this? (Choose three).

- A. Another DHCP server exists in the network and is allocating IP addresses to hosts that happen to be within a closer proximity than the authorized DHCP server.
- B. The hosts were unable to discover a DHCP server and therefore generated their own address in the 169.254.0.0 address range.
- C. The hosts were unable to discover a DHCP server and therefore generated their own address in the

127.254.0.0 address range.

D. All addresses from the DHCP pool have been assigned.

Correct Answer: ABD

Section: (none)

Explanation

Explanation/Reference:

QUESTION 99

```
Router] ip pool pool1
[Router-ip-pool-pool1] network 10.10.10.0 mask 255.255.255.0
[Router-ip-pool-pool1] gateway-list 10.10.10.1
[Router-ip-pool-pool1] quit
[Router] ip pool pool2
[Router-ip-pool-pool2] network 10.20.20.0 mask 255.255.255.0
[Router-ip-pool-pool2] gateway-list 10.20.20.1
[Router-ip-pool-pool2] quit
[Router] interface GigabitEthernet 0/0/1
[Router-GigabitEthernet0/0/1] ip address 10.10.10.1 24
[Router-GigabitEthernet0/0/1] dhcp select global
```

Refer to the configuration output. Following configuration, a host is connected to the interface Gigabit Ethernet 0/0/1 of the router. Which IP address will the client obtain?

- A. An IP address from network 10.10.10.0/24 will be assigned.
- B. An IP address from network 10.20.20.0/24 will be assigned.
- C. The host will be unable to obtain an IP address.
- D. An IP address may be assigned from either 10.10.10.0/24 or 10.20.20.0/24.

Correct Answer: A

Section: (none)

Explanation

Explanation/Reference:

QUESTION 100

The IP addresses of clients in the network are deployed via a DHCP server. When a host reboots, which message will the host first send to the DHCP server?

- A. DHCP DISCOVER
- B. DHCP REQUEST
- C. DHCP OFFER
- D. DHCP ACK

Correct Answer: B

Section: (none)

Explanation

Explanation/Reference:

QUESTION 101

A DHCP Unique Identifier (DUID) in DHCPv6 can be configured in VRRP using which formats? (Choose two).

- A. DUID-LL
- B. DUID-LLT
- C. DUID-EN
- D. DUID-LLC

Correct Answer: AB

Section: (none)

Explanation

Explanation/Reference:

QUESTION 102

Which of the following statements about the information contained in a Database Description packet are true? (Choose three)

- A. A Database Description packet contains all information about each LSA.
- B. A Database Description packet contains only the header of an LSA.
- C. The header of an LSA is the unique identifier of the LSA.
- D. The header of an LSA is only a small portion of all the data of the LSA.

Correct Answer: BCD

Section: (none)

Explanation

Explanation/Reference:

QUESTION 103

What is the default authentication mode for the default_admin domain?

- A. None
- B. Local
- C. Radius
- D. 802.1X

Correct Answer: B

Section: (none)

Explanation

Explanation/Reference:

QUESTION 104

How many domains can be configured on a Huawei router?

- A. 30
- B. 31
- C. 32
- D. 33

Correct Answer: A

Section: (none)

Explanation

Explanation/Reference:

QUESTION 105

An authenticator router has been configured with two domains named "Area1" and "Area2", following which a user is created with the username "huawei" and the password "hello" for authentication. Which domain does this user belong to?

- A. Area1 domain
- B. Area2 domain
- C. default domain
- D. default_admin domain

Correct Answer: C

Section: (none)

Explanation

Explanation/Reference:

QUESTION 106

In order to check if the interface serial 1/0/0 is working in either DCE or DTE mode, command () is used.

- A. display mode serial 1/0/0
- B. display controller
- C. display interface serial 1/0/0
- D. display current-config

Correct Answer: C

Section: (none)

Explanation

Explanation/Reference:

QUESTION 107

How is mapping performed on a DTE device in a Frame Relay network?

- A. The local DLCI number is mapped to a remote IP address.
- B. The local IP address is mapped to a remote DLCI number.
- C. The local DLCI number is mapped to a local IP address.
- D. The remote DLCI number is mapped to a remote IP address.

Correct Answer: A

Section: (none)

Explanation

Explanation/Reference:

QUESTION 108

If Frame Relay implements dynamic address mapping for the PVC, which protocol will be used?

- A. LMI protocol
- B. ARP protocol
- C. RARP protocol
- D. InARP protocol

Correct Answer: D

Section: (none)

Explanation

Explanation/Reference:

QUESTION 109

Which command should be used to check the mapping between protocol addresses and frame relay addresses?

- A. display fr interface
- B. display fr map-info
- C. display fr inarp-info
- D. display interface brief

Correct Answer: B

Section: (none)

Explanation

Explanation/Reference:

QUESTION 110

Which of the following protocols is used in Frame Relay to map the address to DLCI dynamically?

- A. ARP protocol
- B. RARP protocol
- C. InARP protocol
- D. Map protocol

Correct Answer: C

Section: (none)

Explanation

Explanation/Reference:

QUESTION 111

Which of the following parameters must be specified when configuring static mapping for Frame Relay network? (Choose two)

- A. Local DLCI
- B. Remote DLCI
- C. Local network layer protocol address
- D. Remote network layer protocol address

Correct Answer: AD

Section: (none)

Explanation

Explanation/Reference:

QUESTION 112

Which of the following regarding Frame Relay DLCI are correct? (Choose three)

- A. DLCI is locally significant
- B. DLCI is allocated by DTE
- C. The range of DLCI value that can be used is from 16-1007
- D. The same DLCI can be configured on different physical interfaces

Correct Answer: ACD

Section: (none)

Explanation

Explanation/Reference:

QUESTION 113

Which of the following commands is used to enable dynamic address mapping protocol in the interface encapsulated with Frame Relay?

- A. fr inarp
- B. fr reverse-arp
- C. inverse-arp
- D. reverse-arp

Correct Answer: A

Section: (none)

Explanation

Explanation/Reference:

QUESTION 114

What is the meaning of 200 in the command "fr map ip 10.1.1.2 200"?

- A. remote logical channel ID
- B. local DLCI
- C. remote interface ID
- D. remote node ID

Correct Answer: B

Section: (none)

Explanation

Explanation/Reference:

QUESTION 115

Which of the following commands can be used to display mapping relationship between network address and DLCI?

- A. display fr interface

- B. display fr
- C. display fr map-info
- D. display fr brief

Correct Answer: C

Section: (none)

Explanation

Explanation/Reference:

QUESTION 116

Which of following may be the reasons that cause Frame Relay PVC to work abnormally? (Choose three)

- A. Same DLCI number is configured on the same router
- B. LMI type mismatch
- C. Frame Relay encapsulation type mismatch
- D. Incorrect configuration of the DLCI number

Correct Answer: BCD

Section: (none)

Explanation

Explanation/Reference:

QUESTION 117

An administrator wishes to update the VRP software of company's AR2200 router. How can this be achieved? (Choose three)

- A. The administrator can use FTP to transfer the VRP software, with the AR2200 router as the FTP client.
- B. The administrator can use FTP to transfer the VRP software, with the AR2200 router as the FTP server.
- C. The administrator can use TFTP to transfer the VRP software, with the AR2200 router as the TFTP server.
- D. The administrator can use TFTP to transfer the VRP software, with the AR2200 router as the TFTP client.

Correct Answer: ABD

Section: (none)

Explanation

Explanation/Reference:

QUESTION 118

An administrator wishes to implement new features in the network, but the VRP version of one AR2200 router is out of date. The administrator needs to upgrade the VRP software.

Which of the following options regarding file transfer is false?

- A. The AR2200 router can function as a TFTP client to support the upgrade.
- B. The AR2200 router can function as the TFTP server to support the upgrade.
- C. The AR2200 router can function as the FTP server to support the upgrade.
- D. The AR2200 router can function as an FTP client to support the upgrade.

Correct Answer: B

Section: (none)

Explanation

Explanation/Reference:

QUESTION 119

FTP and TFTP can be used to update the system file on Huawei routers. Which of the following statements are correct? (Choose three)

- A. Huawei router can be configured as FTP Client
- B. Huawei router can be configured as FTP Server
- C. Huawei router can be configured as TFTP Client
- D. Huawei router can be configured as TFTP Server

Correct Answer: ABC

Section: (none)

Explanation

Explanation/Reference:

QUESTION 120

An administrator discovered he/she was unable to use TFTP to transfer files to the router.

Which of the following describes the likely reason for this?

- A. The TFTP service had been disabled on the router.
- B. TCP port 69 of the server had been blocked.
- C. UDP port 69 of the server had been blocked.
- D. The username and password had been modified.

Correct Answer: C

Section: (none)

Explanation

Explanation/Reference:

QUESTION 121

FTP may be used to upgrade a router's VRP image.

Which of the following transmission modes should be used to achieve this?

- A. binary mode
- B. ASCII mode
- C. byte mode
- D. letter mode

Correct Answer: A

Section: (none)

Explanation

Explanation/Reference:

QUESTION 122

A client failed to transfer a file to the FTP server, but found the IP connectivity was without problem. The client assumed that the problem was with the port configuration.

The blocking of which ports would likely cause this problem? (Choose two)

- A. 21
- B. 80
- C. 20
- D. 50649

Correct Answer: AC

Section: (none)

Explanation

Explanation/Reference:

QUESTION 123

When using VRRP, which of the following commands is used to configure the data link layer encapsulation type of a serial interface as HDLC?

- A. encapsulation hdlc
- B. link-protocol hdlc
- C. hdlc enable
- D. link-protocol ppp

Correct Answer: B

Section: (none)

Explanation

Explanation/Reference:

QUESTION 124

If AH and ESP are both required to protect data streams between IPsec peers, how many Security Associations (SA) are required in total?

- A. 1
- B. 2
- C. 3
- D. 4

Correct Answer: D

Section: (none)

Explanation

Explanation/Reference:

QUESTION 125

Two routers establish an IPsec tunnel, which of the following does not need to be the same on both peering devices?

- A. Encapsulation mode
- B. Transform mode

- C. Proposal name
- D. authentication algorithm

Correct Answer: C

Section: (none)

Explanation

Explanation/Reference:

QUESTION 126

Which of the following formats represent an accurate condensing of the IPv6 address 2031:0000:720C:0000:09E0:839A:130B? (Choose two).

- A. 2031:0:720C:0:0:9E0:839A:130B
- B. 2031:0:720C:0:0:9E:839A:130B
- C. 2031::720C::9E0:839A:130B
- D. 2031:0:720C::9E0:839A:130B

Correct Answer: AD

Section: (none)

Explanation

Explanation/Reference:

QUESTION 127

Which of the following IPv6 addresses can be configured on a router's interface? (Choose two).

- A. fe80:13dc::1/64
- B. ff00:8a3c::9b/64
- C. ::1/128
- D. 2001:12e3:1b02::21/64

Correct Answer: AD

Section: (none)

Explanation

Explanation/Reference:

QUESTION 128

The IPv6 address architecture does not include which of the following address types?

- A. unicast
- B. multicast
- C. broadcast
- D. anycast

Correct Answer: C

Section: (none)

Explanation

Explanation/Reference:

QUESTION 129

Which of the following descriptions regarding IPv6 addresses are correct? (Choose two)

- A. IPv6 addresses are 64 bits in length.
- B. IPv6 addresses are 128 bits in length.
- C. IPv6 extension headers are processed in order.
- D. IPv6 extension headers are processed randomly.

Correct Answer: BC

Section: (none)

Explanation

Explanation/Reference:

QUESTION 130

Interface G0/0/1 on RTA contains a MAC address of 00e0-fc03-aa73 and is configured with the IPv6 address 2001::2E0:FCFF:FE03:AA73. Which method is most likely to have been used to configure the interface IPv6 address?

- A. DHCPv6
- B. Auto-link
- C. ARP
- D. EUI-64

Correct Answer: D

Section: (none)

Explanation

Explanation/Reference:

QUESTION 131

In a small network supporting IPv6, a network administrator wishes implement RIPng.

Which of the following commands should be used to enable this protocol?

- A. [RTA-GigabitEthernet0/0/0]ripng 1 enable
- B. [RTA]ripng 1 enable
- C. <RTA>ripng 1 enable
- D. [RTA-ripng-1]ripng 1 enable

Correct Answer: A

Section: (none)

Explanation

Explanation/Reference:

QUESTION 132

In a network supporting IPv6, OSPF no longer supports which feature?

- A. multiple areas
- B. Router-ID

- C. authentication
- D. multicast updates

Correct Answer: C

Section: (none)

Explanation

Explanation/Reference:

QUESTION 133

The network administrator has decided to configure link aggregation in the enterprise network.

Which of the following represent advantages of link aggregation? (Choose three)

- A. Load balancing.
- B. Improved bandwidth.
- C. Enhanced reliability.
- D. Improved security.

Correct Answer: ABC

Section: (none)

Explanation

Explanation/Reference:

QUESTION 134

In port aggregation, "multiple" ports are aggregated to form a port aggregation group so that all the member ports in the group share the outgoing/incoming load.

At which layer is port aggregation implemented?

- A. Physical Layer
- B. Data Link Layer
- C. Network Layer
- D. Transport Layer

Correct Answer: B

Section: (none)

Explanation

Explanation/Reference:

QUESTION 135

What benefits does port aggregation yield? (Choose three)

- A. Improves link bandwidth
- B. Implements load sharing
- C. Improves network reliability
- D. Facilitates data copy for analysis

Correct Answer: ABC

Section: (none)

Explanation

Explanation/Reference:

QUESTION 136

What is the maximum number of member interfaces supported by a single Eth-Trunk?

- A. 6
- B. 8
- C. 10
- D. 12

Correct Answer: B

Section: (none)

Explanation

Explanation/Reference:

QUESTION 137

The Eth-Trunk frame forwarding mechanism used to prevent changes in the data sequence forwards frames based on which of the following parameters?

- A. The same source or destination IP address.
- B. The same source or destination MAC address.
- C. The same protocol type.
- D. The same source or destination port number.

Correct Answer: AB

Section: (none)

Explanation

Explanation/Reference:

QUESTION 138

In Layer 2 mode, the transmission rate of an Eth-Trunk interface is determined by which of the following? (Choose all that apply.)

- A. Maximum number of Up member links
- B. Minimum number of Up member links
- C. Number of Up member interfaces
- D. Number of interfaces.

Correct Answer: AC

Section: (none)

Explanation

Explanation/Reference:

QUESTION 139

The network administrator wishes to forward data over an Eth-trunk, however associated member interfaces operate at different rates. In terms of the resulting behavior, which of the following is true?

- A. The two switches will not be able to communicate.
- B. The higher rate member interfaces may incur packet loss.
- C. The Eth-Trunk will work normally.
- D. The lower rate member interfaces may incur packet loss.

Correct Answer: D

Section: (none)

Explanation

Explanation/Reference:

QUESTION 140

The network administrator attempts to add interface G0/0/1 on Switch A to Eth-trunk 1, however the command fails.

Which of the following may cause this?

- A. The interface is operating in half-duplex mode.
- B. The interface has been shutdown.
- C. The interface is already associated with another Eth-trunk.
- D. The interface is an access port.

Correct Answer: CD

Section: (none)

Explanation

Explanation/Reference:

QUESTION 141

A network requires a solution to allow 50 private IP addresses to be translated, however only a single public address is available for use.

Which translation method can be used to support this requirement?

- A. Static NAT
- B. Dynamic NAT
- C. Easy-IP
- D. NAT

Correct Answer: C

Section: (none)

Explanation

Explanation/Reference:

QUESTION 142

NAPT allows for multiple internal addresses to be mapped to a single public address.

How does NAT distinguish between the different private addresses when mapping to the same public address?

- A. The source MAC address is used.
- B. The destination MAC address is used.

- C. The source port number is used.
- D. The destination port number is used.

Correct Answer: C

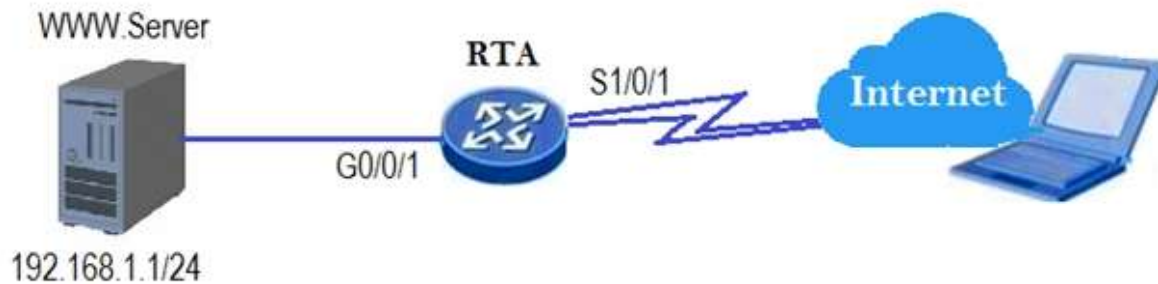
Section: (none)

Explanation

Explanation/Reference:

QUESTION 143

A web server in a private network is required to provide HTTP services to public users. The network administrator is required to configure NAT on RTA.



Which configuration should be used?

- A. [RTA-Serial1/0/1]nat server protocol tcp global 202.10.10.1 www inside 192.168.1.1 8080
- B. [RTA-Serial0/0/1]nat server protocol tcp global 192.168.1.1 www inside 202.10.10.1 8080
- C. [RTA-Gigabitethernet0/0/1]nat server protocol tcp global 202.10.10.1 www inside 192.168.1.1 8080
- D. [RTA- Gigabitethernet0/0/1]nat server protocol tcp global 192.168.1.1 www inside 202.10.10.1 8080

Correct Answer: A

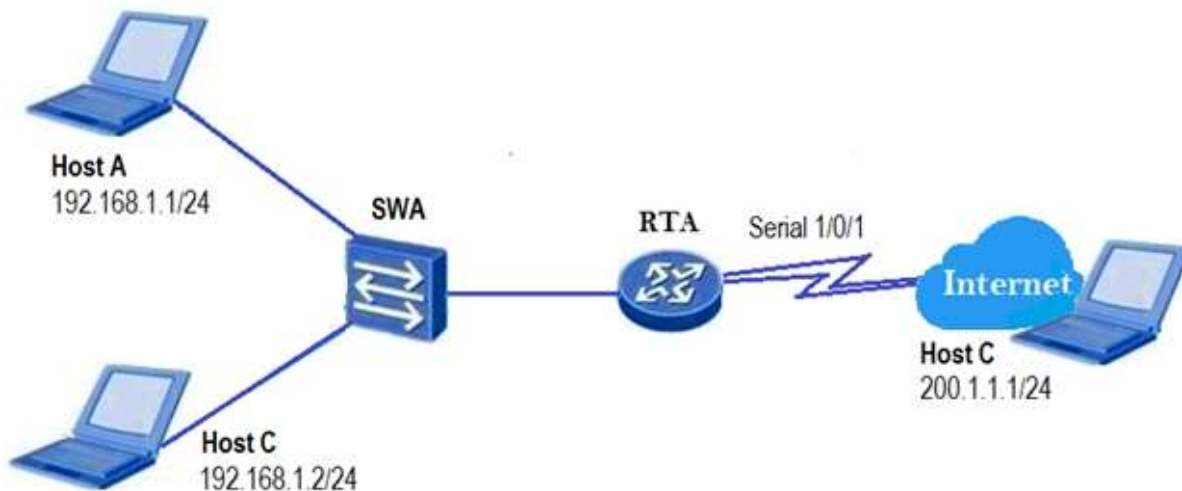
Section: (none)

Explanation

Explanation/Reference:

QUESTION 144

The network administrator needs to configure static NAT on RTA, in order to allow Host A to communicate with Host C.



Which command is correct?

- A. [RTA-Serial1/0/1]nat outbound 200.1.1.10
- B. [RTA-Serial1/0/1]nat static global 200.1.1.10 inside 192.168.1.0
- C. [RTA-Serial1/0/1]nat static global 192.168.1.1 inside 200.1.1.10
- D. [RTA-Serial1/0/1]nat static global 200.1.1.10 inside 192.168.1.1

Correct Answer: D

Section: (none)

Explanation

Explanation/Reference:

QUESTION 145

[RTA-GigabitEthernet0/0/0]nat outbound 2000 address-group 1

Refer to the configuration output. What does the value “2000” refer to?

- A. It represents the ACL number.
- B. It represents the NAT number.
- C. It represents the translated port number.
- D. It represents the number of bytes that can be translated before the address is returned to the public address pool.

Correct Answer: A

Section: (none)

Explanation

Explanation/Reference:

QUESTION 146

NAPT uses the same public address but different port numbers to translate private addresses.

Which statement regarding the port number is correct?

- A. It is necessary to configure port number mapping manually.

- B. It is only necessary to configure the port number range.
- C. It is not necessary to configure port numbers.
- D. An access control list is needed to assign port numbers.

Correct Answer: C

Section: (none)

Explanation

Explanation/Reference:

QUESTION 147

A configured internal host of a private network wishes to access the internet. What must be configured on the enterprise network egress router in order to achieve this? (Choose all that apply.)

- A. NAT Easy IP
- B. DHCP
- C. BGP
- D. Default route

Correct Answer: AD

Section: (none)

Explanation

Explanation/Reference:

QUESTION 148

Which of the following statements are correct about NAT? (Choose three)

- A. NAT is the abbreviation for "Network Address Translation".
- B. NAT is used for translation between private and public network addresses.
- C. When hosts inside a private network access the outside network, NAT is not required.
- D. NAT provides an effective way to solve the problem of insufficient IP addresses.

Correct Answer: ABD

Section: (none)

Explanation

Explanation/Reference:

QUESTION 149

Which of the following technologies can allow a host with IP address 10.0.0.1 to access the internet?

- A. Static route
- B. Dynamic route
- C. Route import
- D. NAT

Correct Answer: D

Section: (none)

Explanation

Explanation/Reference:

QUESTION 150

Which of the following items can be translated by NATP?

- A. MAC address + port number
- B. IP address + port number
- C. Only MAC address
- D. Only IP address

Correct Answer: B

Section: (none)

Explanation

Explanation/Reference:

QUESTION 151

Which of the following statements about a designated port working in RIPv2 multicast mode are true? (Choose three)

- A. The port receives only RIPv2 multicast packets.
- B. The port does not receive RIPv1 broadcast packets.
- C. The port does not receive RIPv2 broadcast packets.
- D. The port receives only RIPv1 multicast packets.

Correct Answer: ABC

Section: (none)

Explanation

Explanation/Reference:

QUESTION 152

Which of the following statements regarding the router ID in OSPF are incorrect? (Choose three)

- A. The router IDs of OSPF routers in the same area must be the same, but can be different in different areas.
- B. The router ID must be the IP address of an OSPF router interface.
- C. The router ID must be configured manually.
- D. A router running OSPF must have a router ID for it to operate properly.

Correct Answer: ABC

Section: (none)

Explanation

Explanation/Reference:

QUESTION 153

Which of the following statements regarding Designated Routers in OSPF are correct? (Choose three)

- A. DR is elected by all the routers in the same network segment.
- B. If the priorities of two routers are different, the router with the lower priority will be elected as DR.
- C. If the priorities of two routers are equal, the router with the higher Router ID will be elected as DR.
- D. DR and BDR must be adjacent.

Correct Answer: ACD

Section: (none)

Explanation

Explanation/Reference:

QUESTION 154

On the VRP platform, which of the following commands is used to configure the Router ID of a router as 1.1.1.1?

- A. <Huawei>router id 1.1.1.1
- B. [Huawei]router id 1.1.1.1
- C. [Huawei]router-id 1.1.1.1
- D. [Huawei]router id 1.1.1.1 255.255.255.255

Correct Answer: B

Section: (none)

Explanation

Explanation/Reference:

QUESTION 155

Which of the following OSPF versions is specific to IPv6?

- A. OSPFv1
- B. OSPFv2
- C. OSPFv3
- D. OSPFv4

Correct Answer: C

Section: (none)

Explanation

Explanation/Reference:

QUESTION 156

The administrator wishes to configure OSPF on a router in the network however the router has no loopback interface.

Which value will be used as the router ID?

- A. The lowest IP address of the router's active interfaces.
- B. The highest IP address of the router's active interfaces.
- C. The IP address of the management interface.
- D. The priority value of the router.

Correct Answer: B

Section: (none)

Explanation

Explanation/Reference:

QUESTION 157

An administrator of a company supporting a large enterprise network wishes to implement OSPF on the network as opposed to RIP. Which of the following points should the administrator use to support his reasoning for this change? (Choose three)

- A. OSPF has no hop count limitation.
- B. OSPF has a lower routing update overhead.
- C. OSPF has a simpler configuration.
- D. OSPF supports faster convergence.

Correct Answer: ABD

Section: (none)

Explanation

Explanation/Reference:

QUESTION 158

Which of the following statements regarding single area OSPF are correct? (Choose three)

- A. An IP address needs to be configured on a loopback interface of each router before configuring an OSPF area.
- B. The value of an area can be from 0.0.0.0 to 255.255.255.255.
- C. A single area can be configured using any supported area number.
- D. All of the links of the network need to be advertised in Area 0.

Correct Answer: BCD

Section: (none)

Explanation

Explanation/Reference:

QUESTION 159

10.0.1.0/24 O_ASE 150 2 D 10.0.23.3 Serial2/0/0

Refer to the display output. Which of the following statements regarding route shown are true? (Choose two)

- A. The address 10.0.23.3 has been configured on the peer's serial 2/0/0 interface.
- B. The route preference has been changed by the administrator.
- C. The metric for the route 10.0.1.0 indicates that two hops are needed.
- D. The route has been learned via the OSPF protocol.

Correct Answer: AD

Section: (none)

Explanation

Explanation/Reference:

QUESTION 160

Which of the following statements regarding link-state database and routing-table of a "single" OSPF area are correct? (Choose two)

- A. The link-state databases that all routers build are identical.

- B. The link-state databases that all routers build are different.
- C. The routing-tables that all routers calculate are different.
- D. The routing-tables that all routers calculate are identical.

Correct Answer: AC

Section: (none)

Explanation

Explanation/Reference:

QUESTION 161

Which of the following steps are necessary to configure OSPF on a Huawei router? (Choose three)

- A. Configuration of a router ID
- B. Enabling of an OSPF process
- C. Specifying an OSPF area
- D. Configuration of the network segments within each area

Correct Answer: BCD

Section: (none)

Explanation

Explanation/Reference:

QUESTION 162

Which of the following statements regarding the DR in an OSPF network are correct? (Choose two)

- A. There must be at least one DR in an OSPF area.
- B. A DR must be elected among the routers through the negotiations that are defined by OSPF protocol.
- C. Only the router with highest priority will be elected as DR.
- D. Only NBMA or Broadcast networks need to elect DR.

Correct Answer: BD

Section: (none)

Explanation

Explanation/Reference:

QUESTION 163

Which of the following VRP commands can be used to enter area 0 view? (Choose two)

- A. [Huawei]ospf area 0
- B. [Huawei-ospf-1]area 0
- C. [Huawei-ospf-1]area 0.0.0.0
- D. [Huawei-ospf-1]area 0 enable

Correct Answer: BC

Section: (none)

Explanation

Explanation/Reference:

QUESTION 164

Which of the following commands is used to display the OSPF neighbor relationship establishment?

- A. display ospf neighbor
- B. display ospf brief
- C. display ospf peer
- D. display ospf interface

Correct Answer: C

Section: (none)

Explanation

Explanation/Reference:

QUESTION 165

With what kind of routers does a DRother router exchange link state information and route information?
(Choose two)

- A. DR
- B. BDR
- C. DRother
- D. All OSPF neighbors

Correct Answer: AB

Section: (none)

Explanation

Explanation/Reference:

QUESTION 166

An OSPF area is a collection of a group of routers and networks. OSPF defines that routers that have the same () belong to the same OSPF area.

- A. neighbors
- B. LSDB
- C. LSA
- D. adjacency

Correct Answer: B

Section: (none)

Explanation

Explanation/Reference:

QUESTION 167

Which of the following statements about router IDs are true? (Choose two)

- A. The routers contained in the same LSDB have the same router ID.
- B. Each router in an OSPF network must have a unique router ID.
- C. Two routers in different OSPF areas can have the same router ID.
- D. A router ID is expressed in a 32-bit dotted decimal format.

Correct Answer: BD
Section: (none)
Explanation

Explanation/Reference:

QUESTION 168

OSPF allows for “multiple” processes. By default, OSPF selects a process whose number is ().

- A. 0
- B. 1
- C. 10
- D. 100

Correct Answer: B
Section: (none)
Explanation

Explanation/Reference:

QUESTION 169

In a network supporting IPv6, OSPF no longer supports which feature?

- A. multiple areas
- B. Router-ID
- C. authentication
- D. multicast updates

Correct Answer: C
Section: (none)
Explanation

Explanation/Reference:

QUESTION 170

Two routers are configured with OSPFv3. OSPFv3 is enabled on all interfaces of each router.

Which of the following is true in the event that the network administrator does not configure a Router-ID?

- A. The IP address of the loopback 0 interface will be used as the router ID.
- B. The IP address of the loopback 1 interface will be used as the router ID.
- C. The IP address of interface G0/0/0 will be used as the router ID.
- D. No router ID will be assigned to the router.

Correct Answer: D
Section: (none)
Explanation

Explanation/Reference:

QUESTION 171

Destination/Mask protocol pre Cost Nexthop Interface

9.0.0.0/8 OSPF 10 50 1.1.1.1 Serial 1/0/0

9.1.0.0/16 RIP 100 5 2.2.2.2 Ethernet 0/0/1

Refer to the graphic. Which of the following statements is correct when this router forwards the packet to the destination host 9.1.4.5?

- A. The router selects the first entry to match the destination address of the packet because the preference of OSPF is higher than the preference of RIP.
- B. The router selects the second entry to match the destination address of the packet because the cost of RIP is lower than that of OSPF.
- C. The router selects the second entry to match the destination address of the packet because the outgoing interface is an Ethernet interface. The forwarding speed of an Ethernet interface is faster than the forwarding speed of a serial interface.
- D. The router selects the second entry to match the destination address of the packet because the router will match the most specific address.

Correct Answer: D

Section: (none)

Explanation

Explanation/Reference:

QUESTION 172

According to the default value of route preference on the VRP platform, which of the following represent the correct sequence for direct route, static route, RIP and OSPF if they are listed from high preference to low preference?

- A. Direct, Static, RIP, OSPF
- B. Direct, OSPF, Static, RIP
- C. Direct, OSPF, RIP, Static
- D. Direct, RIP, Static, OSPF

Correct Answer: B

Section: (none)

Explanation

Explanation/Reference:

QUESTION 173

A router has learned two routes for the same network with the same prefix. One route has been learned via OSPF with a metric of 4882, while the other route has been learned via RIPv2 with a metric of 4.

Which route (s) will be found in the routing table?

- A. The RIPv2 route.
- B. The OSPF and RIPv2 routes.
- C. The OSPF route.
- D. Neither of these routes will be found in the routing table.

Correct Answer: C

Section: (none)

Explanation

Explanation/Reference:

QUESTION 174

Assume that the router has learnt the best route to the same destination by using RIP, OSPF and Static Route respectively. By default, the Huawei router will select the route learnt via () as the best route.

- A. RIP
- B. OSPF
- C. RIPv2
- D. Static route

Correct Answer: B

Section: (none)

Explanation

Explanation/Reference:

QUESTION 175

After checking the OSPF neighbor state, the administrator discovers that the router has established a TWOWAY state with the peering router.

What can be understood from this information? (Choose two)

- A. The routers are configured using the same process ID
- B. The routers are configured using the same area ID
- C. The routers are configured using wrong router ID
- D. The routers are considered DROthers in a broadcast network

Correct Answer: CD

Section: (none)

Explanation

Explanation/Reference:

QUESTION 176

What functions does a Hello packet of OSPF implement? (Choose two)

- A. Neighbor discovery
- B. Deletion of unreachable neighbors
- C. Maintaining of neighbor relationships
- D. Negotiation of parameters among adjacent ports

Correct Answer: AC

Section: (none)

Explanation

Explanation/Reference:

QUESTION 177

Two routers are connected through serial interfaces and support PPP encapsulation.

Which parameters must be negotiated to establish the PPP connection? (Choose three).

- A. MRU
- B. Authentication password
- C. Magic-Number
- D. IP address

Correct Answer: ACD

Section: (none)

Explanation

Explanation/Reference:

QUESTION 178

What are the three protocol components defined by PPP? (Choose three).

- A. Data encapsulation.
- B. LCP
- C. NCP
- D. IPCP

Correct Answer: ABC

Section: (none)

Explanation

Explanation/Reference:

QUESTION 179

Two routers are connected via serial interfaces, for which the link-protocol is PPP. The network administrator wishes to configure PPP authentication to improve security on this link.

Which PPP authentication method provides a more secure solution?

- A. CHAP
- B. PAP
- C. MD5
- D. SSH

Correct Answer: A

Section: (none)

Explanation

Explanation/Reference:

QUESTION 180

If PPP authentication fails, which type of packet will be sent to the authenticated peer by the authenticator?

- A. Authenticate-Ack
- B. Authenticate-Nak
- C. Authenticate-Reject

D. Authenticate-Reply

Correct Answer: B

Section: (none)

Explanation

Explanation/Reference:

QUESTION 181

Two routers are connected via serial interfaces and the link-protocol is PPP, but the MRU of two serial interfaces are different, in PPP LCP negotiated stage, what will happen?

- A. LCP negotiation will fail
- B. Negotiation will use the smaller value
- C. Negotiation will use the larger value
- D. Negotiation will use 1500

Correct Answer: B

Section: (none)

Explanation

Explanation/Reference:

QUESTION 182

PPP is more secure than HDLC because PPP supports authentication protocols such as (). (Choose two)

- A. PAP
- B. MD5
- C. CHAP
- D. SSH

Correct Answer: AC

Section: (none)

Explanation

Explanation/Reference:

QUESTION 183

When both ends running PPP protocol detect that the physical link is active, the link state will transit from dead to establish.

Which of the following protocols is used to negotiate the link parameters during this phase?

- A. IP
- B. DHCP
- C. LCP
- D. NCP

Correct Answer: C

Section: (none)

Explanation

Explanation/Reference:

QUESTION 184

A serial interface of a Huawei router currently using HDLC needs to assign PPP as the encapsulation protocol.

Which of the following commands is required to be configured at the serial interface view?

- A. link-protocol ppp
- B. encapsulation ppp
- C. enable ppp
- D. address ppp

Correct Answer: A

Section: (none)

Explanation

Explanation/Reference:

QUESTION 185

When using VRP, which of the following commands is used to configure the PPP authentication method as PAP?

- A. ppp pap
- B. ppp authentication-pap
- C. ppp authentication-mode pap
- D. ppp pap-authentication

Correct Answer: C

Section: (none)

Explanation

Explanation/Reference:

QUESTION 186

When configuring the PPP authentication method as PAP, which of the following operations are necessary? (Choose three)

- A. Add the user name and password of the authenticated party to the local user list.
- B. Configure the encapsulation type of the interface connected to the peer as PPP.
- C. Configure PPP authentication method as CHAP.
- D. On the authenticated party end, configure the user name and password that are sent to authenticator.

Correct Answer: ABD

Section: (none)

Explanation

Explanation/Reference:

QUESTION 187

In the PPP protocol, which of the following encryption algorithms is used by CHAP?

- A. DES
- B. MD5

- C. AES
- D. None

Correct Answer: B

Section: (none)

Explanation

Explanation/Reference:

QUESTION 188

What is the function of the "ip address ppp-negotiate" command?

- A. Enables the function of requesting for an IP address from the peer device.
- B. Enables the function of accepting the request for an IP address from the remote device.
- C. Enables the function of statically allocating IP addresses to the peer.
- D. None of the above.

Correct Answer: A

Section: (none)

Explanation

Explanation/Reference:

QUESTION 189

Two routers have established a point-to-point network using PPP. The administrator has configured the routers to run OSPF in the same area with the same router ID, what behavior will occur as a result of the configuration?

- A. The routers will build a neighbor relationship even though both routers are using the same router ID.
- B. VRRP will notify of a router ID conflict between the two routers.
- C. The routers will build an adjacency even though both routers are using the same router ID.
- D. The routers will not send hello packets to each other because they are using the same router ID.

Correct Answer: B

Section: (none)

Explanation

Explanation/Reference:

QUESTION 190

The PPPoE session establishment process can be divided into which stages? (Choose all that apply.)

- A. Discovery stage
- B. DHCP stage
- C. PPPoE Session stage
- D. PPP connecting stage.

Correct Answer: AC

Section: (none)

Explanation

Explanation/Reference:

QUESTION 191

To establish multiple PPP point-to-point connections in the Ethernet network, a PPPoE server establishes connections with multiple PPPoE clients on one Ethernet port.

How does PPPoE differentiate between each connection?

- A. MAC address.
- B. IP address and MAC address
- C. MAC address and ppp-id
- D. MAC address and session-id

Correct Answer: D

Section: (none)

Explanation

Explanation/Reference:

QUESTION 192

When configuring a router as a PPPoE client, which configuration is not necessary?

- A. Configuration of the dialer-rule
- B. Configuration of the dialer interface
- C. Configuration of an IP address on the dialer interface
- D. Configuration of a password on the dialer interface

Correct Answer: C

Section: (none)

Explanation

Explanation/Reference:

QUESTION 193

In the PPPoE discovery stage, the PPPoE server assigns a session-id to the PPPoE client in which packet?

- A. PADI
- B. PADO
- C. PADR
- D. PADS

Correct Answer: D

Section: (none)

Explanation

Explanation/Reference:

QUESTION 194

Which command can be used to check the PPPoE client session status?

- A. display ip interface brief
- B. display current-configuration
- C. display pppoe-client session packet

D. display pppoe-client session summary

Correct Answer: D

Section: (none)

Explanation

Explanation/Reference:

QUESTION 195

[Huawei]rip 1

[Huawei-rip-1]version 2

Refer to the command output. An administrator wishes to configure RIP. Which other command needs to be configured for RIP routes to be advertised?

- A. import-route GigabitEthernet 0/0/1
- B. network 192.168.1.0 0.0.0.255
- C. network GigabitEthernet 0/0/1
- D. network 192.168.1.0

Correct Answer: D

Section: (none)

Explanation

Explanation/Reference:

QUESTION 196

A RIP router receives the routing update information from its neighbor.

Which of the following statements regarding routing update are correct? (Choose three)

- A. The received route that is not in the routing table will be added only when its hop count value is less than 16.
- B. The received route that already exists in the routing table will be updated only when the next hop is the router's neighbor and the cost value is smaller.
- C. The received route that already exists in the routing table will be updated only when the next hop is not the router's neighbor and the cost value is smaller.
- D. The received route that already exists in the routing table will be updated only when the next hop is the router's neighbor and the cost value has been changed.

Correct Answer: ACD

Section: (none)

Explanation

Explanation/Reference:

QUESTION 197

Which of the following commands is used to display the current running state and configuration of RIP?

- A. display protocol rip
- B. show rip
- C. display rip
- D. display this rip

Correct Answer: C
Section: (none)
Explanation

Explanation/Reference:

QUESTION 198

A user can view the information for the RIP protocol on a router. What does “Age time” in the returned result of the command mean?

- A. The interval of updating an RIP packet
- B. The aging time of an RIP route
- C. The suppression time of an RIP route
- D. The time spent on switching between RIP routes

Correct Answer: B
Section: (none)
Explanation

Explanation/Reference:

QUESTION 199

After a command for displaying RIP route information is entered on a router, peer 192.168.1.2 on Serial1/0/0 is displayed in the returned result.

What does 192.168.1.2 stand for?

- A. Address of a RIP neighbor
- B. Address of the port with the RIP protocol enabled
- C. Next hop address of the RIP route
- D. Transmission address of the RIP protocol

Correct Answer: A
Section: (none)
Explanation

Explanation/Reference:

QUESTION 200

```
<R2>debugging rip 1
```

```
Sep 13 2013 11:07:20.974.1-05:13 R2 RIP/7/DBG: 6: 13414: RIP 1: Receiving v1 response on  
GigabitEthernet0/0/0 from 10.0.12.1 with 1 RTE
```

```
Sep 13 2013 11:07:20.974.2-05:13 R2 RIP/7/DBG: 6: 13465: RIP 1: Receive response from  
10.0.12.1 on
```

```
GigabitEthernet0/0/0
```

```
Sep 13 2013 11:07:20.974.3-05:13 R2 RIP/7/DBG: 6: 13476: Packet: Version 1, Cmd response,  
Length 24
```

```
Sep 13 2013 11:07:20.974.4-05:13 R2 RIP/7/DBG: 6: 13527: Dest 1.0.0.0, Cost 1
```

```
Sep 13 2013 11:07:20.974.5-05:13 R2 RIP/7/DBG: 6: 2688: RIP 1: Ignoring packet. This version  
is not configured.
```

Refer to the debug output. Following configuration of R2, the administrator discovers that the behavior is not as expected and performs debugging. Based on the output from the debug, what is the source of the problem?

- A. R2 has configured an ACL to block the route to network 1.0.0.0
- B. R2 has enabled split horizon.
- C. R1 is using authentication, however R2 is not.
- D. R2 is operating using RIPv2, while R1 is using RIPv1.

Correct Answer: D

Section: (none)

Explanation

Explanation/Reference:

QUESTION 201

Which of the following statements about a designated port working in RIPv2 multicast mode are true? (Choose three)

- A. The port receives only RIPv2 multicast packets.
- B. The port does not receive RIPv1 broadcast packets.
- C. The port does not receive RIPv2 broadcast packets.
- D. The port receives only RIPv1 multicast packets.

Correct Answer: ABC

Section: (none)

Explanation

Explanation/Reference:

QUESTION 202

When a network administrator configures STP in the network, BPDU begin to be sent by switch. Which of the following statements regarding the BPDU frame are correct?

- A. A BPDU uses the IEEE 802.3 standard frame type
- B. A BPDU uses the Ethernet II standard frame type
- C. The BPDU frame's control field is 3
- D. The destination MAC address field of a BPDU frame is a broadcast address

Correct Answer: A

Section: (none)

Explanation

Explanation/Reference:

QUESTION 203

In the case of Huawei router, the Tracert command uses UDP to encapsulate probe packets.

- A. True
- B. False

Correct Answer: A

Section: (none)

Explanation

Explanation/Reference:

QUESTION 204

The broadcast address of the subnet 192.168.1.0/25 is 192.168.1.128.

- A. True
- B. False

Correct Answer: B

Section: (none)

Explanation

Explanation/Reference:

QUESTION 205

A network administrator wishes to assign an IP address to a router interface G0/0/0. Which of the following IP addresses can be assigned?

- A. 192.168.10.112/30
- B. 237.6.1.2/24
- C. 145.4.2.55/26
- D. 127.3.1.4/28

Correct Answer: C

Section: (none)

Explanation

Explanation/Reference:

QUESTION 206

If a network's address is 192.168.1.0, the broadcast address of the network is 192.168.1.255.

- A. True
- B. False

Correct Answer: A

Section: (none)

Explanation

Explanation/Reference:

QUESTION 207

In the VRP system, what are the functions of Ctrl+Z?

- A. Return from the system view to the user view
- B. Exit from the current view
- C. Exit from the interface view
- D. Exit from the console interface view
- E. Return to the user view

Correct Answer: A

Section: (none)

Explanation

Explanation/Reference:

QUESTION 208

In standard STP mode, which of the following ports on non-root switches forward the BPDUs with TC bits set generated by the root switch?

- A. Root port
- B. Backup port
- C. Designated port
- D. Alternate port

Correct Answer: A

Section: (none)

Explanation

Explanation/Reference:

QUESTION 209

Assuming all STP enabled switches have the same bridge priority. The MAC address of switch A is 00-e0-fc-00-00-40, the MAC address of switch B is 00-e0-fc-00-00-10, the MAC address of switch C is 00-e0-fc-00-00-20, and the MAC address of switch D is 00-e0-fc-00-00-80.

Which switch will be elected as the root switch?

- A. Switch A
- B. Switch B
- C. Switch C
- D. Switch D

Correct Answer: B

Section: (none)

Explanation

Explanation/Reference:

QUESTION 210

As specified by the RSTP protocol, when a root port fails, which type of port will function as a new root port and enters the forwarding state without any delay?

- A. Forwarding Port
- B. Alternate Port
- C. Backup Port
- D. Edge Port

Correct Answer: B

Section: (none)

Explanation

Explanation/Reference:

QUESTION 211

In STP, the priority of the STP root switch ranges from 0 to 65536.

- A. True
- B. False

Correct Answer: A

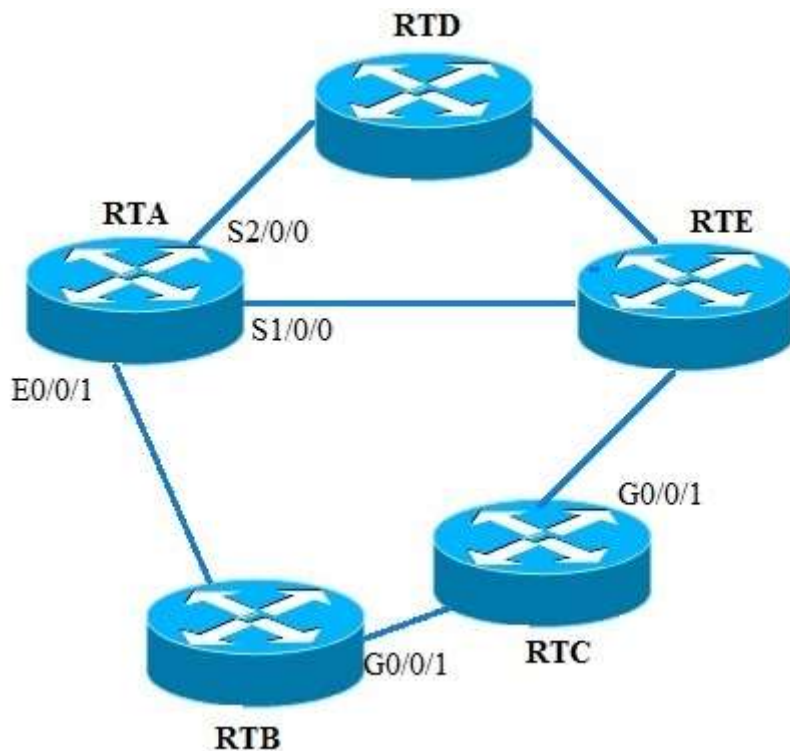
Section: (none)

Explanation

Explanation/Reference:

QUESTION 212

Refer to the graphic. Which statements correctly explains the forwarding behavior between RTA and RTE?
(Choose all that apply)



- A. When the network uses OSPF, data will be forwarded along the path via S1/0/0
- B. When the network uses RIPv2, data will be forwarded along the path via S1/0/0
- C. When the network uses OSPF, data will be forwarded along the path from via E0/0/1
- D. When the network uses RIPv2, data will be forwarded along the path via S2/0/0

Correct Answer: BC

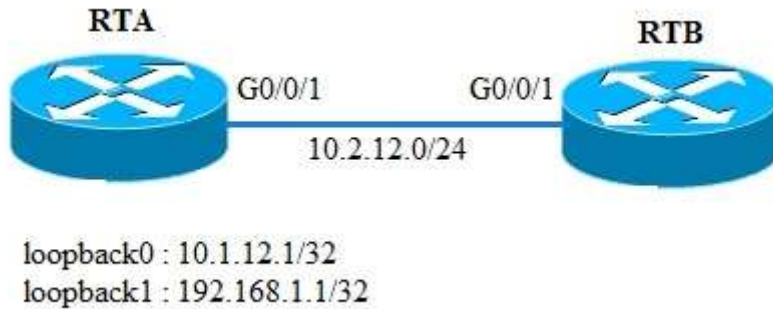
Section: (none)

Explanation

Explanation/Reference:

QUESTION 213

Refer to the graphic. RTA and RTB are running RIPv1. RTA has advertised 10.0.0.0 and 192.168.1.0 to the RIP network. Which routes will exist in the IP routing table of RTB? (Choose all that apply)



- A. 10.0.0.0/8
- B. 192.168.1.1/32
- C. 10.1.12.1/32
- D. 192.168.1.0/24

Correct Answer: AD

Section: (none)

Explanation

Explanation/Reference:

QUESTION 214

Which of the following configurations regarding static route are correct? (Choose all that apply)

- A. ip route-static 129.1.0.0 16 serial 0
- B. ip route-static 10.0.0.2 16 129.1.0.0
- C. ip route-static 129.1.0.0 16 10.0.0.2
- D. ip route-static 129.1.0.0.255.255.0.0 10.0.0.2

Correct Answer: ACD

Section: (none)

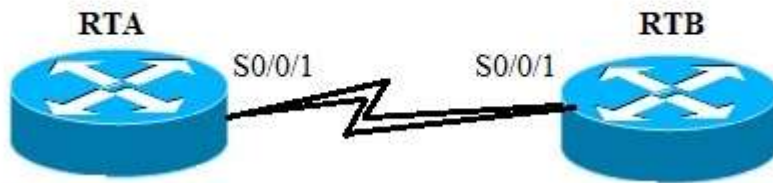
Explanation

Explanation/Reference:

QUESTION 215

Refer to the graphic. An administrator has configured RIPv2 in the two routers. What will happen after configuring the following commands: (Choose all that apply)

[RTA-Serial0/0/1] rip output
[RTA-rip-1]silent-interface s0/0/1



- A. RTA will have the route learned from the RTB
- B. RTB will have the route learned from the RTA
- C. RTA will have no neighbor relationship with RTB
- D. RTB will have no neighbor relationship with RTA

Correct Answer: AD

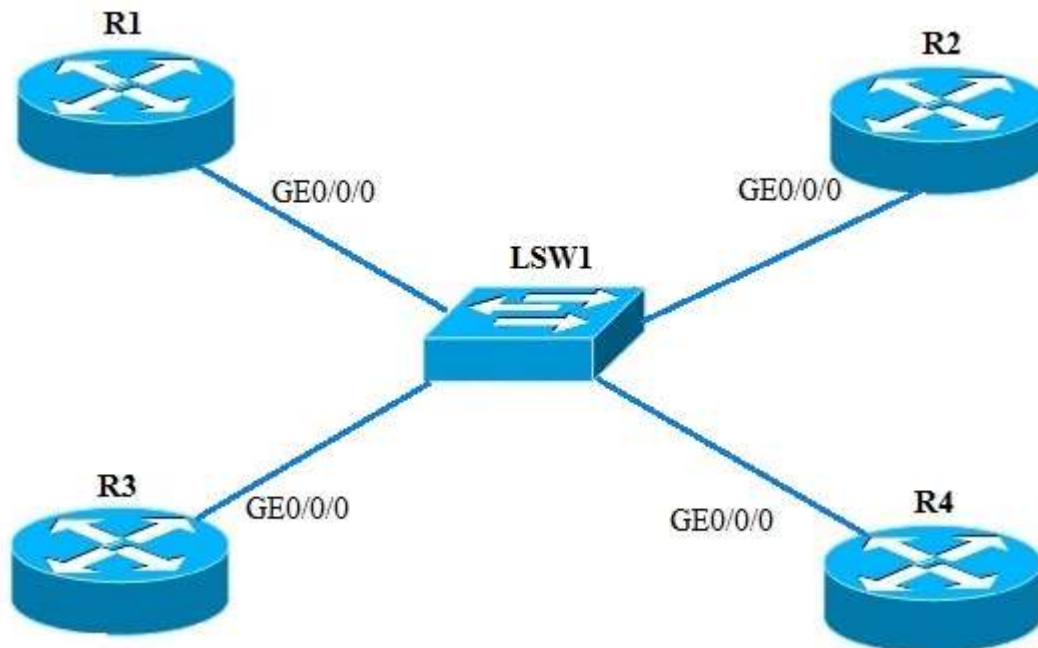
Section: (none)

Explanation

Explanation/Reference:

QUESTION 216

Refer to the graphic. OSPF is used on four routers that are in the same area and on the same network segment. In this scenario, OSPF selects one DR and multiple BDRs to ensure backup.



- A. True
- B. False

Correct Answer: B

Section: (none)

Explanation

Explanation/Reference:

QUESTION 217

On Huawei devices, you can use the undo summary command to prohibit automatic route summarization of RIPv2.

- A. True
- B. False

Correct Answer: A

Section: (none)

Explanation

Explanation/Reference:

QUESTION 218

Which of the following configurations regarding default route configuration is correct?

- A. [Quidway] ip route-static 0.0.0.0 0.0.0.0 172.16.2.1
- B. [Quidway] ip route-static 0.0.0.0 255.255.255.255 172.16.2.1
- C. [Quidway-GigabitEthernet0/0/1] ip route-static 0.0.0.0 0.0.0.0 172.16.2.1
- D. [Quidway] ip route static 0.0.0.0 0.0.0.0 172.16.2.1

Correct Answer: A

Section: (none)

Explanation

Explanation/Reference:

QUESTION 219

Which of the following WLAN standards support operation in the 5GHz range? (Choose all that apply)

- A. 802.11a
- B. 802.11b
- C. 802.11g
- D. 802.11n

Correct Answer: AD

Section: (none)

Explanation

Explanation/Reference:

QUESTION 220

On Huawei switches, you can run the vlan batch command to create multiple VLANs in batches.

- A. True
- B. False

Correct Answer: A

Section: (none)
Explanation

Explanation/Reference:

QUESTION 221

According to the topology and configuration of interconnected interfaces of switches shown in the figure, the data frame tagged with VLAN 10 can be forwarded correctly between the two switches.



```
[LSW1]interface GigabitEthernet0/0/1
[LSW1-GigabitEthernet0/0/1]Port link-type trunk
[LSW1-GigabitEthernet0/0/1]Port trunk pvid vlan 20
[LSW1-GigabitEthernet0/0/1]Port trunk allow-pass vlan 10
#
[LSW2]interface GigabitEthernet0/0/1
[LSW2-GigabitEthernet0/0/1]Port link-type trunk
[LSW2-GigabitEthernet0/0/1]Port trunk pvid vlan 20
[LSW2-GigabitEthernet0/0/1]Port trunk allow-pass vlan 10
```

- A. True
- B. False

Correct Answer: A
Section: (none)
Explanation

Explanation/Reference:

QUESTION 222

The network administrator creates VLAN 10 and assigns an IP address to VLANIF10. When using the command "display ip interface brief", the administrator finds that VLANIF10 is down. What should be done to enable VLANIF10?

- A. Use the command “undo shutdown” under the interface view for VLANIF10
- B. Assign a physical interface that has either an active or inactive physical state to VLAN 10
- C. Assign only a physical interface that has an active physical state to VLAN 10
- D. Add an interface that has an active physical state and a trunk port associated with VLAN 10

Correct Answer: C

Section: (none)

Explanation

Explanation/Reference:

QUESTION 223

A network administrator wishes to implement VLAN 10 to isolate certain users. It is common however for these users to often change their physical location. Which of the following VLAN implementations should be used?

- A. Port based VLAN assignment
- B. Protocol based VLAN assignment
- C. MAC based VLAN assignment
- D. IP subnet based VLAN assignment

Correct Answer: C

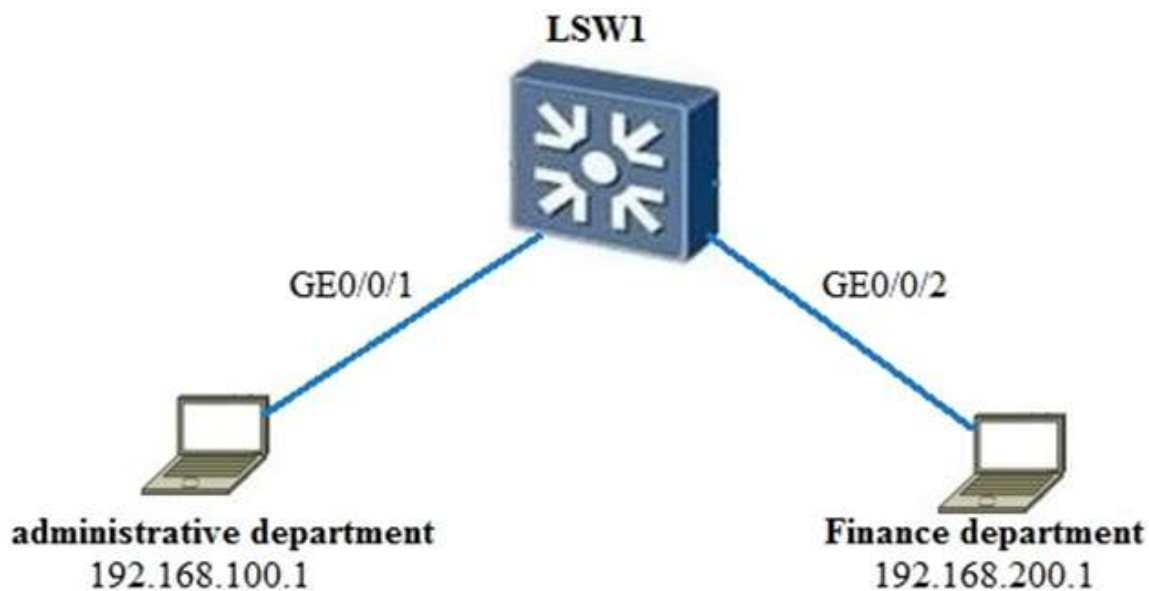
Section: (none)

Explanation

Explanation/Reference:

QUESTION 224

Refer to the graphic. GE0/0/1 and GE0/0/2 on the switch are configured as hybrid interfaces. Which of the following statements are true? (Choose all that apply)



```
[LSW1]interface GigabitEthernet0/0/1
[LSW1 – GigabitEthernet0/0/1]port hybrid untagged vlan 10 20
[LSW1 – GigabitEthernet0/0/1]port hybrid pvid vlan 10
[LSW1]interface GigabitEthernet0/0/2
[LSW1 - GigabitEthernet0/0/2]port hybrid untagged vlan 10 20
[LSW1 – GigabitEthernet0/0/2]port hybrid pvid vlan 20
```

- A. The administrative department and the finance department cannot communicate with each other because the VLANs of the two departments are different.
- B. The data frames sent by the administrative department carry tagged VLAN 20 on the switch.
- C. On the switch, the data frames sent by the finance department carry tagged VLAN 20.
- D. The switch can be a Layer 2 or Layer 3 switch because communications do not need to be transmitted through a Layer 3 gateway.
- E. If GE0/0/1 and GE0/0/2 on the switch are changed to trunk ports, the administrative department and finance department can communicate with each other.

Correct Answer: BC

Section: (none)

Explanation

Explanation/Reference:

QUESTION 225

On the VRP, what is the function of the “interface vlanif <vlan-id>” command?

- A. It is used to create a VLANIF interface
- B. It is used to create a VLANIF interface and enter the VLANIF interface view
- C. It is used to configure a VLAN for a VLANIF interface
- D. There is no such command

Correct Answer: B

Section: (none)

Explanation

Explanation/Reference:

QUESTION 226

InARP resolves the protocol address of the remote device on each virtual circuit, including IP addresses and IPX addresses.

- A. True
- B. False

Correct Answer: A

Section: (none)

Explanation

Explanation/Reference:

QUESTION 227

On an FR network, the DLCI identifies a virtual circuit on an interface. The DLCI must be unique during planning and deployment.

- A. True
- B. False

Correct Answer: B

Section: (none)

Explanation

Explanation/Reference:

QUESTION 228

If AAA authentication is used on Huawei devices and the remote server does not respond, the authentication can be performed on network devices.

- A. True
- B. False

Correct Answer: A

Section: (none)

Explanation

Explanation/Reference:

QUESTION 229

An ACL does not filter traffic generated by the Huawei device towards other devices, but only filters forwarded traffic, including traffic generated by other devices to access the Huawei device.

- A. True
- B. False

Correct Answer: A

Section: (none)

Explanation

Explanation/Reference:

QUESTION 230

Which of the following statements are true about ACL deployment on Huawei devices? (Choose all that apply)

- A. ACL can only be used in the outbound direction of an interface
- B. The same ACL can be used on multiple interfaces
- C. The ACL rules can only be configured in the following sequence: 10, 20, 30...
- D. ACLs cannot be used to filter OSPF traffic because OSPF does not use UDP to encapsulate packets
- E. ACLs can be used to match with the TCP/UDP port IDs of packets and to designate the port ID range

Correct Answer: BE

Section: (none)

Explanation

Explanation/Reference:

QUESTION 231

SNMP packets are encapsulated in TCP packets.

- A. True
- B. False

Correct Answer: B

Section: (none)

Explanation

Explanation/Reference:

QUESTION 232

In OSPFv3, router IDs can be used automatically generated by the system.

- A. True
- B. False

Correct Answer: A

Section: (none)

Explanation

Explanation/Reference:

QUESTION 233

VLSM can expand any IP network segment, including Class D addresses.

- A. TRUE
- B. FALSE

Correct Answer: B

Section: (none)

Explanation

Explanation/Reference:

QUESTION 234

Refer to the graphic, 00e0-fc99-9999 is a specific host MAC address learned by a switch through ARP and the host changes the IP address three times.

```
<Huawei>display arp dynamic
```

IP ADDRESS	MAC ADDRESS	EXPIRE(M)	TYPE	INTERFACE	VPN-INSTANCE	VLAN/CEVLAN	PVC
10.137.217.210	00e0-fc01-0203		-	Ethernet1/0/0			
10.2.2.1	00e0-fc99-9999		-	Eth-Trunk0			
192.168.20.1	00e0-fc99-9999		-	Vlanif100			
10.0.0.1	00e0-fc99-9999		-	Vlanif200			
Total:7	Dynamic:2	Static:0		Interface:5			

- A. TRUE
- B. FALSE

Correct Answer: A

Section: (none)

Explanation

Explanation/Reference:

QUESTION 235

There are two routers (RTA and RTB) between the source device and destination device. The Tracert command is used to detect the path between the two devices. During detection of the first hop (RTA), the source device sends a UDP packet with a TTL of 1 to an interface with a large interface number on the destination device. The TTL turns to 0 when the packet arrives at RTB, upon which RTA sends an ICMP _____ message to the source device.

- A. Time Exceeded.
- B. Echo Request.
- C. Echo Reply.
- D. Port Unreachable.

Correct Answer: A

Section: (none)

Explanation

Explanation/Reference:

QUESTION 236

Which of the following statements are true about ICMP messages? (Multiple Choice)

- A. ICMP messages can record time, including the original time, packet receiving time, and packet sending time.
- B. ICMP messages are encapsulated in IP packets but not at the transport layer.
- C. ICMP messages include error messages, control messages, request/response messages, and update messages.
- D. ICMP does not support redirection.
- E. ICMP messages cannot be used to detect a path's MTU.

Correct Answer: BC

Section: (none)

Explanation

Explanation/Reference:

QUESTION 237

If a network's broadcast address is 172.16.1.255, which of the following addresses can be the network address?

- A. 172.16.2.0
- B. 172.16.1.253
- C. 172.16.1.128

D. 172.16.1.1

Correct Answer: C

Section: (none)

Explanation

Explanation/Reference:

QUESTION 238

On the command line interface of Huawei AR routers, the role of the Save command is to Save the current system time.

A. TRUE

B. FALSE

Correct Answer: B

Section: (none)

Explanation

Explanation/Reference:

QUESTION 239

Which of the following technologies is used to bind MAC addresses to interfaces on a switch?

A. SEP.

B. Port security.

C. ACL.

D. NAT.

Correct Answer: B

Section: (none)

Explanation

Explanation/Reference:

QUESTION 240

In RSTP, a backup port can replace a faulty root port.

A. TRUE

B. FALSE

Correct Answer: A

Section: (none)

Explanation

Explanation/Reference:

QUESTION 241

During STP calculation, the port cost is associated with port bandwidth. Which of the following statements about the relation between port cost and port bandwidth is true?

A. Port cost decreases when port bandwidth increases.

- B. Port cost increases when port bandwidth increases.
- C. Port cost is consistent with port bandwidth.
- D. Port cost varies randomly according to port bandwidth.

Correct Answer: A

Section: (none)

Explanation

Explanation/Reference:

QUESTION 242

Which of the following descriptions about STP are incorrect? (Multiple Choice)

- A. A layer-2 switching network can have only one designated switch.
- B. All the ports of the root switch are root ports.
- C. All the ports of the root switch are designated ports.
- D. The switch with the smallest priority value is elected as non-root switch.

Correct Answer: BD

Section: (none)

Explanation

Explanation/Reference:

QUESTION 243

Which of the following statements about static route preference on Huawei devices is false?

- A. Static route preference ranges from 0 to 255.
- B. Default static route preference is 60.
- C. Static route preference is either internal or external. Administrators can modify external preferences.
- D. If static route preference is 255, the route cannot be used.

Correct Answer: A

Section: (none)

Explanation

Explanation/Reference:

QUESTION 244

Refer to the graphic, which of the following statements is true about OSPF topology and configuration?



```

[R1]interface GigabitEthernet0/0/0
[R1-GigabitEthernet0/0/0]ip address 100.1.1.1 255.255.255.0
[R1-GigabitEthernet0/0/0]ospf network-type p2p
[R1-GigabitEthernet0/0/0]ospf dr-priority 100
[R1-GigabitEthernet0/0/0]ospf timer hello 20
[R1]ospf 1
[R1-ospf-1]area 0.0.0.0
[R1-ospf-1-area-0.0.0.0]network 100.1.1.1 0.0.0.0
#
[R2]interface GigabitEthernet0/0/0
[R2-GigabitEthernet0/0/0]ip address 100.1.1.2 255.255.255.0
[R2]ospf 1
[R2-ospf-1] area 0.0.0.0
[R2-ospf-1-area-0.0.0.0]network 100.1.1.2 0.0.0.0

```

- A. A stable OSPF neighbor relationship can be set up between R1 and R2.
- B. After the default network type of the interface on R1 is restored to broadcast, a stable OSPF neighbor relationship can be set up between R1 and R2.
- C. After the default network type of the interface on R1 is restored to broadcast and the hello packet sending interval is changed to 10s, a stable OSPF neighbor relationship can be set up between R1 and R2.
- D. Compared with R1, R2 is more likely to become the DR because the DR priority of the interface on R2 is lower than that of R1.

Correct Answer: C

Section: (none)

Explanation

Explanation/Reference:

QUESTION 245

Refer to the graphic. An administrator has configured OSPF on the two routers, following which he then implements the command `silent-interface s0/0/1` on RTA. What effect will this command have on the network? (Multiple Choice)



- A. The link information advertised by RTB will be maintained in the Link State Database of RTA.

- B. The OSPF neighbor relationship will fail between two routers.
- C. The configuration will not affect the OSPF neighbor relationship between the two routers.
- D. The link information advertised by RTB will no longer be maintained in the Link State Database of RTA.

Correct Answer: B

Section: (none)

Explanation

Explanation/Reference:

QUESTION 246

In an RIP process on a Huawei device, which of the following configurations are correct for advertising network 10.1.1.1/30? (Multiple Choice)

- A. network 10.1.1.0
- B. undo summary
network 10.1.1.0
- C. version 2
undo summary
network 10.0.0.0
- D. undo summary
network 10.1.0.0
- E. network 10.0.0.0

Correct Answer: B

Section: (none)

Explanation

Explanation/Reference:

QUESTION 247

The following configuration commands implement route backup on RTA for a route to the same destination 10.1.1.0.

```
[RTA]ip route-static 10.1.1.0 24 12.1.1.1 permanent  
[RTA]ip route-static 10.1.1.0 24 13.1.1.1
```

- A. TRUE
- B. FALSE

Correct Answer: B

Section: (none)

Explanation

Explanation/Reference:

QUESTION 248

Refer to the command output. Which statement is true regarding this command?

```
ip route-static 10.0.12.0 255.255.255.0 192.168.1.1
```

- A. The configuration represents a static route to the 192.168.1.1 network

- B. The configuration represents a static route to the 10.0.12.0 network.
- C. The preference value of this configured route is 100.
- D. If the router has learned the same destination network via a dynamic routing protocol, the static route will always take precedence.

Correct Answer: B

Section: (none)

Explanation

Explanation/Reference:

QUESTION 249

Which of the following network types does OSPF support? (Multiple Choice)

- A. Point-to-Point.
- B. Broadcast.
- C. Non-Broadcast Multi-Access.
- D. Point-to-Multipoint.

Correct Answer: ABC

Section: (none)

Explanation

Explanation/Reference:

QUESTION 250

A DHCP Offer packet can carry only one DNS server address.

- A. TRUE
- B. FALSE

Correct Answer: B

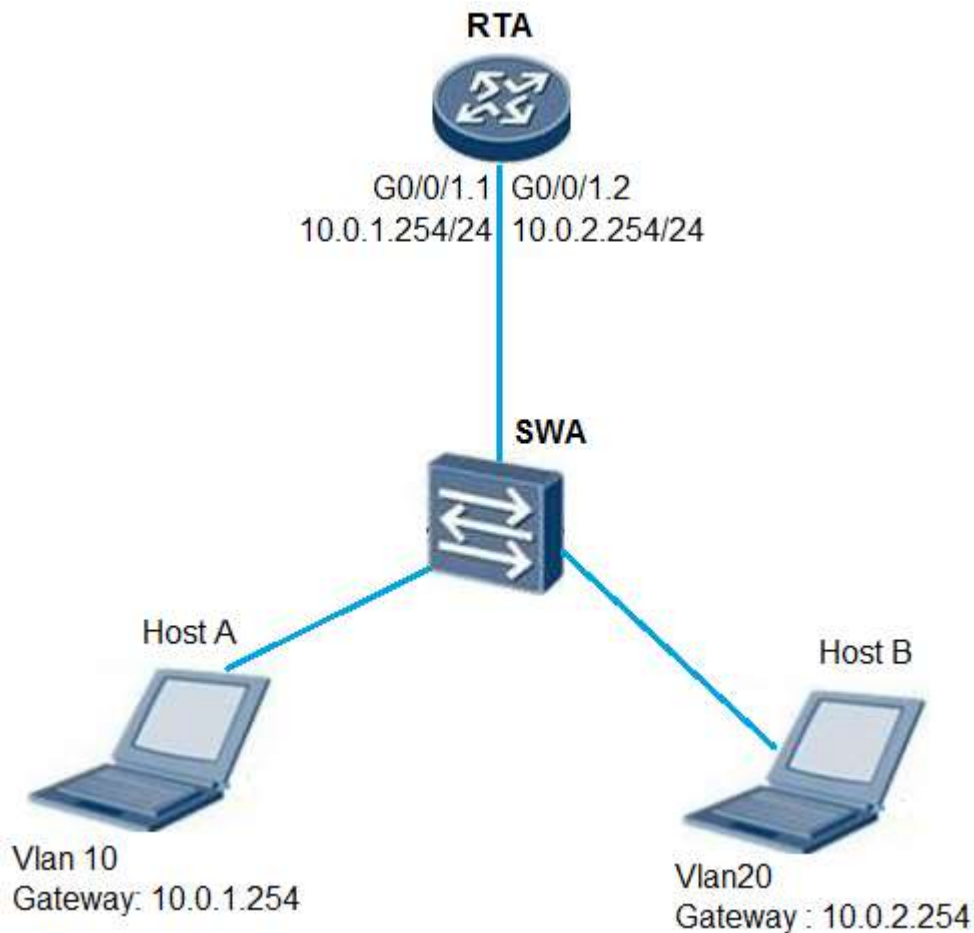
Section: (none)

Explanation

Explanation/Reference:

QUESTION 251

Refer to the graphic. Host A and Host B use VLAN routing to facilitate communication. What must be configured on interface G0/0/1.1 of RTA to achieve this?



- A. dot1q termination vid 1.
- B. dot1q termination vid 10.
- C. dot1q termination vid 20.
- D. dot1q termination vid 30.

Correct Answer: B

Section: (none)

Explanation

Explanation/Reference:

QUESTION 252

Refer to the configuration output. Which following statements are correct? (Multiple choice)

```
[Huawei]interface GigabitEthernet0/0/1
[Huawei-GigabitEthernet0/0/1]port link-type trunk
[Huawei-GigabitEthernet0/0/1]port trunk allow-pass vlan 2 to 4094
```

- A. VLAN 1 cannot pass over interface Gigabit Ethernet 0/0/1.
- B. VLAN 1 can pass over interface Gigabit Ethernet 0/0/1.
- C. Prior to changing the link-type to access, the command “undo port trunk allow-pass vlan all” must be used to renew the default configurations.

D. Prior to changing the link-type to access, the command “undo port trunk allow-pass vlan 2 to 4096” must be used to renew the default configurations.

Correct Answer: AD

Section: (none)

Explanation

Explanation/Reference:

QUESTION 253

Link aggregation is a common technique in enterprise network. Which of the following description is the advantages of link aggregation? (Multiple Choice)

- A. Improves link bandwidth.
- B. Implements load sharing.
- C. Improves network reliability.
- D. Facilitates data copy for analysis.

Correct Answer: ABC

Section: (none)

Explanation

Explanation/Reference:

QUESTION 254

On Huawei switches, VLAN 4095 cannot be created and VLAN 1 cannot be deleted.

- A. TRUE
- B. FALSE

Correct Answer: A

Section: (none)

Explanation

Explanation/Reference:

QUESTION 255

Refer to the graphic, after the ping 10.1.1.2 command is executed on R1, LSW1 receives a tagged data frame from VLAN 10 on LSW2.



```
[R2]interface GigabitEthernet0/0/0
[R1-GigabitEthernet0/0/0]ip address 10.1.1.1 255.255.255.0
#
[LSW1]interface GigabitEthernet0/0/1
[LSW1-GigabitEthernet0/0/1] port hybrid untagged vlan 10 20
[LSW1-GigabitEthernet0/0/1] port hybrid pvid vlan 10
[LSW1]interface GigabitEthernet0/0/2
[LSW1-GigabitEthernet0/0/2]port link-type trunk
[LSW1-GigabitEthernet0/0/2]port trunk allow-pass vlan 10 20
#
[LSW2]interface GigabitEthernet0/0/2
[LSW2-GigabitEthernet0/0/2]port link-type trunk
[LSW2-GigabitEthernet0/0/2]port trunk allow-pass vlan 10 20
[LSW2]interface vlanif 10
[LSW2-Vlanif10]ip address 10.1.1.2 255.255.255.0
```

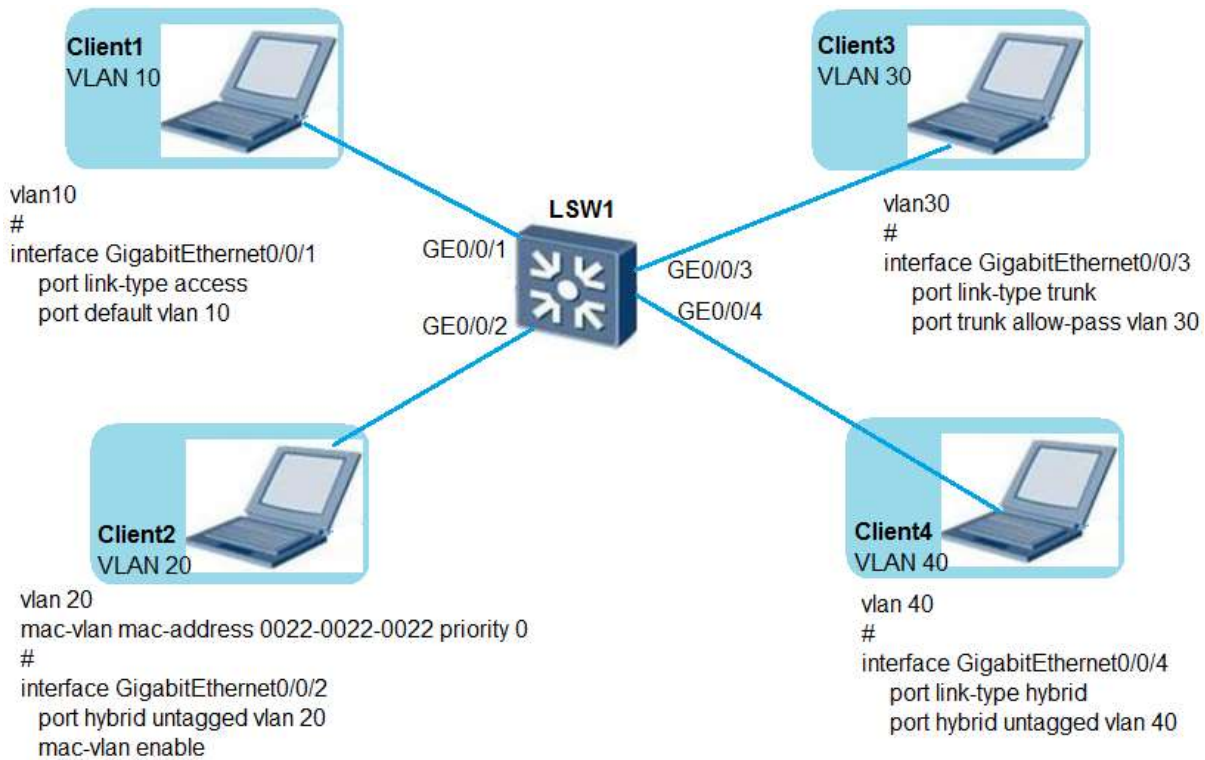
- A. TRUE
- B. FALSE

Correct Answer: B
Section: (none)
Explanation

Explanation/Reference:

QUESTION 256

Refer to the graphic, which of the following statements are true about VLAN configuration on Huawei switches?
(Multiple Choice)



- A. Client1 belongs to VLAN 10 and the VLAN assignment command on LSW1 is correct.
- B. Client2 belongs to VLAN 20, and the MAC address-based VLAN assignment command on LSW1 is correct.
- C. Client3 is in VLAN 30, and the VLAN assignment command on LSW1 is correct.
- D. Client4 belongs to VLAN 40, and the VLAN assignment command on LSW1 is correct.
- E. Client4 does not belong to VLAN 40, and the VLAN assignment command on LSW1 is incorrect.

Correct Answer: ACD

Section: (none)

Explanation

Explanation/Reference:

QUESTION 257

Which of the following statements is true about the PPP configuration and deployment?

- A. PPP cannot be used to deliver IP addresses.
- B. PPP supports both CHAP and PAP authentication.
- C. PPP cannot change the keepalive time.
- D. PPP does not support bidirectional authentication.

Correct Answer: B

Section: (none)

Explanation

Explanation/Reference:

QUESTION 258

According to the following topology and configuration, R1 and R2 are connected through low-speed serial

cables and PPP is used to encapsulate data link layer packets. When the Holdtime values of R1 and R2 are different, PPP negotiation and communication fail.



```
[R1]interface Serial0/0/0
[R1-Serial0/0/0] ip address 202.10.1.1 255.255.255.0
[R1-Serial0/0/0] timer hold 2
#
[R2]interface Serial0/0/0
[R2-Serial0/0/0] ip address 202.10.1.2 255.255.255.0
```

- A. TRUE
- B. FALSE

Correct Answer: A
Section: (none)
Explanation

Explanation/Reference:

QUESTION 259

Refer to the graphic. IPsec VPN uses ESP to encrypt which fields?



- A. TCP, Data and ESP Trailer.
- B. ESP, TCP and Data.
- C. ESP, TCP, Data and ESP Trailer.
- D. ESP, TCP, Data, ESP Trailer and ESP Auth.

Correct Answer: A
Section: (none)
Explanation

Explanation/Reference:

QUESTION 260

The authentication, authorization and accounting schemes and HWTACACS or RADIUS server templates created on AR routers take effect only after being applied to a domain.

- A. TRUE
- B. FALSE

Correct Answer: A
Section: (none)

Explanation

Explanation/Reference:

QUESTION 261

Which SNMP version focuses on two main aspects, namely security and administration. The security aspect is addressed by offering both strong authentication and data encryption for privacy. The administration aspect is focused on two parts, namely notification originators and proxy forwarders.

- A. SNMPv1
- B. SNMPv2
- C. SNMPv2c
- D. SNMPv3

Correct Answer: D

Section: (none)

Explanation

Explanation/Reference:

QUESTION 262

Which of the following route entries can be aggregated into 10.0.0.24/29? (Choose all that apply.)

- A. 10.0.0.25/30
- B. 10.0.0.23/30
- C. 10.0.0.26/30
- D. 10.0.0.22/30

Correct Answer: AC

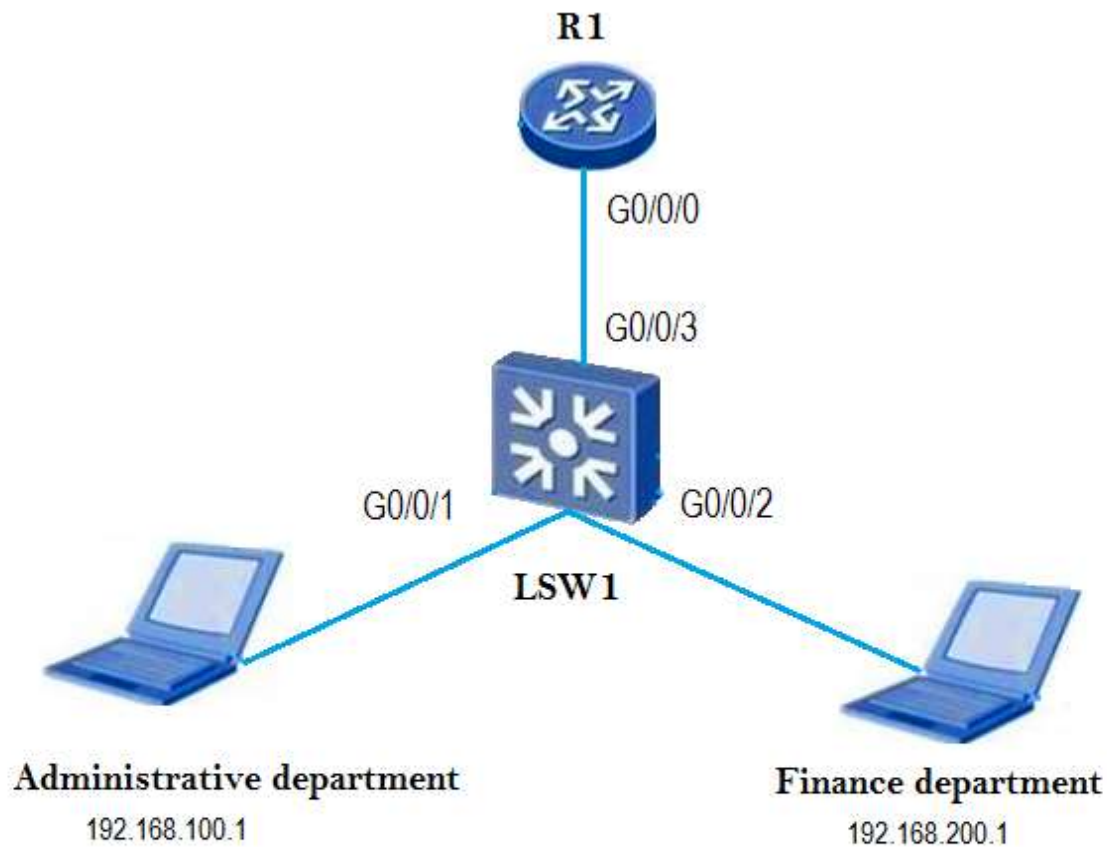
Section: (none)

Explanation

Explanation/Reference:

QUESTION 263

According to the configuration of single-armed routing in the following figure, the administrative department and finance department can communicate with each other even the proxy ARP is disabled on the subinterface on R1.



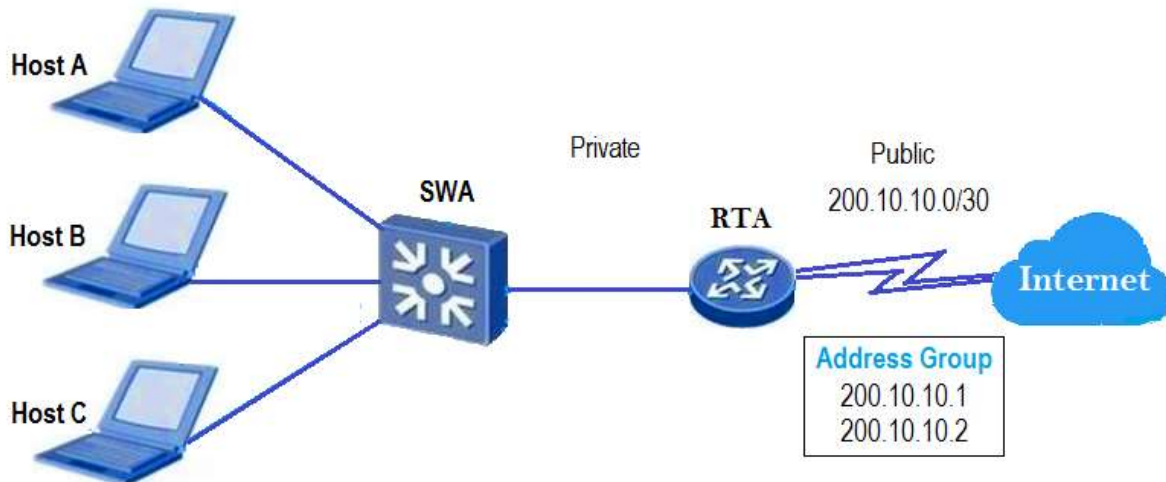
```
[R1] interface GigabitEthernet0/0/0.1
[R1-GigabitEthernet0/0/0.1]dot1q termination vid 10
[R1-GigabitEthernet0/0/0.1] ip address 192.168.100.254.255.255.255.0
[R1] interface GigabitEthernet0/0/0.2
[R1-GigabitEthernet0/0/0.2]dot1q termination vid 20
[R1-GigabitEthernet0/0/0.2] ip address 192.168.100.254.255.255.255.0
```

- A. True
- B. False

Correct Answer: B
Section: (none)
Explanation

Explanation/Reference:

QUESTION 264
Refer to the graphic.



In the private network, RTA dynamically assigns a public address from the address pool to hosts without port translation. Host C wishes to access the public network while addresses are assigned to Host A and Host B. What will occur as a result?

- A. The first public address will be allocated to Host C, and Host A will be forced offline.
- B. The last public address will be allocated to Host C, and Host B will be forced offline.
- C. Host C will be unable to forward traffic over the public network.
- D. All hosts will have access to the public network through pool address swapping.

Correct Answer: C

Section: (none)

Explanation

Explanation/Reference:

QUESTION 265

After the keepalive function is enabled for a GRE tunnel, the local end of the GRE tunnel sends a keepalive packet to the remote end every 10s.

- A. True
- B. False

Correct Answer: B

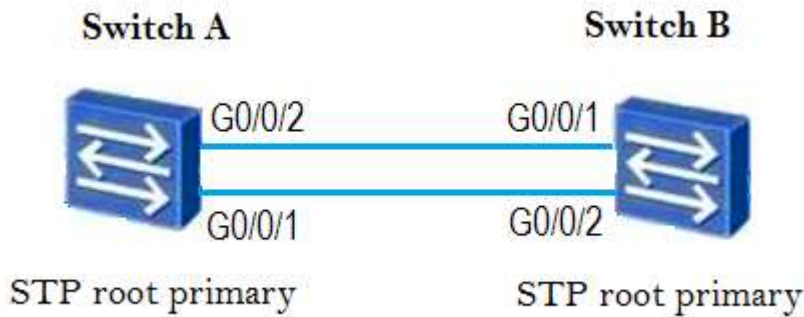
Section: (none)

Explanation

Explanation/Reference:

QUESTION 266

Refer to the graphic.



Both switches are operating using STP. With exception to those shown, all other default parameters have been maintained. Which port will be blocked?

- A. Port G0/0/1 of switch A.
- B. Port G0/0/2 of switch B.
- C. Port G0/0/1 of switch B.
- D. Port G0/0/2 of switch A.

Correct Answer: C

Section: (none)

Explanation

Explanation/Reference:

QUESTION 267

Layer 2 switches are data link layer devices that identify MAC addresses of Layer 2 data frames and forward Layer 2 data frames based on MAC addresses. In addition, they record mappings between MAC addresses and interfaces in the MAC address table.

- A. True
- B. False

Correct Answer: A

Section: (none)

Explanation

Explanation/Reference:

QUESTION 268

In RSTP mode, both alternate and backup ports cannot forward user traffic but can receive, process, and send BPDU.

- A. True
- B. False

Correct Answer: A

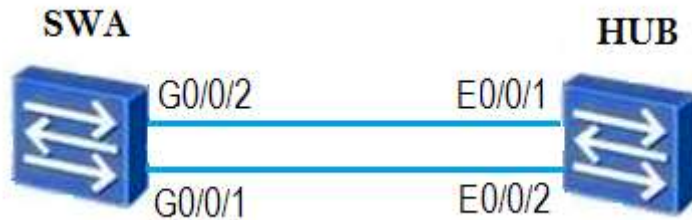
Section: (none)

Explanation

Explanation/Reference:

QUESTION 269

Refer to the graphic.



The switch is operating using STP. All default parameters have been maintained. Which port will be assigned a designated port role?

- A. G0/0/1 of switch A.
- B. G0/0/2 of switch A.
- C. E0/0/1 of the hub.
- D. E0/0/2 of the hub.

Correct Answer: A

Section: (none)

Explanation

Explanation/Reference:

QUESTION 270

How can the default route be generated? (Choose all that apply.)

- A. Manually configured.
- B. Automatically generated by the router.
- C. Generated by dynamic routing protocols.
- D. Generated by link layer protocols.

Correct Answer: AC

Section: (none)

Explanation

Explanation/Reference:

QUESTION 271

The following figure shows a routing table. When this router receives a packet with a destination IP address of 9.1.1.1, the router forwards the packet based on the route 9.1.0.0/16 because the matched bit number in this route is the largest.

[Huawei] display ip routing-table
Route Flags: R - relay, D - download to fib

Destination/Mask	Proto	Pre	Cost	Flags	NextHop	Interface
0.0.0.0/0	Static	60	0	D	120.0.0.2	Serial1/0/0
8.0.0.0/8	RIP	100	3	D	120.0.0.2	Serial1/0/0
9.0.0.0/8	OSPF	10	50	D	20.0.0.2	Ethernet2/0/0
9.1.0.0/16	RIP	100	4	D	120.0.0.2	Serial1/0/0
11.0.0.0/8	Static	60	0	D	120.0.0.2	Serial1/0/0
20.0.0.0/8	Direct	0	0	D	20.0.0.1	Ethernet2/0/0
20.0.0.1/32	Direct	0	0	D	127.0.0.1	Loopback0

- A. True
- B. False

Correct Answer: A

Section: (none)

Explanation

Explanation/Reference:

QUESTION 272

Refer to the graphic.

[Huawei] display ip routing-table
Route Flags: R - relay, D - download to fib

Destination/Mask	Proto	Pre	Cost	Flags	NextHop	Interface
1.1.1.1/32	Static	60	0	D	100.1.1.1	GigabitEthernet0/0/0
100.1.1.0/24	Direct	0	0	D	100.1.1.1	GigabitEthernet0/0/0
100.1.1.1/32	Direct	0	0	D	127.0.0.1	GigabitEthernet0/0/0
103.0.0.0/26	Direct	0	0	D	103.0.0.1	GigabitEthernet0/0/2
103.0.0.1/32	Direct	0	0	D	127.0.0.1	GigabitEthernet0/0/2
127.0.0.0/8	Direct	0	0	D	127.0.0.1	InLoopback0
127.0.0.1/32	Direct	0	0	D	127.0.0.1	InLoopback0
200.1.1.0/24	Direct	0	0	D	200.1.1.1	GigabitEthernet0/0/1
200.1.1.0/32	Direct	0	0	D	127.0.0.1	GigabitEthernet0/0/1

The routing table includes direct routes and static routes and the preference of the direct routes cannot be changed.

- A. True
- B. False

Correct Answer: A

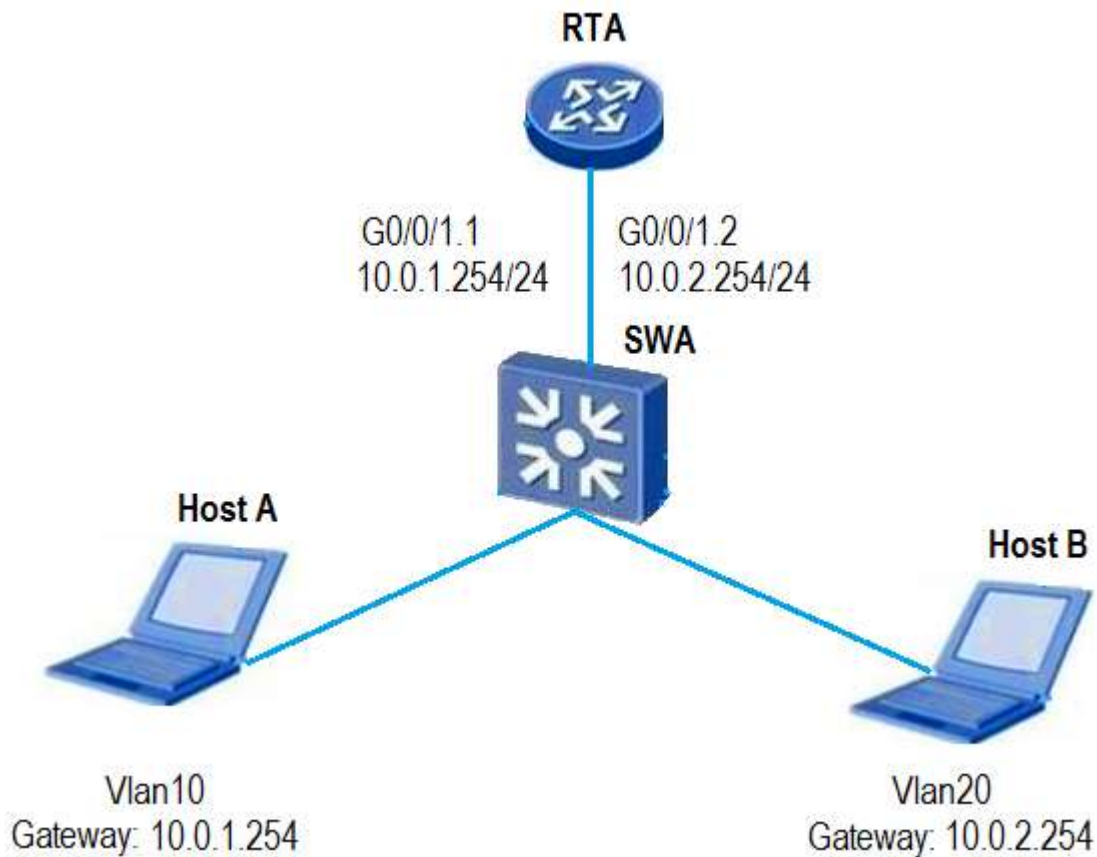
Section: (none)

Explanation

Explanation/Reference:

QUESTION 273

Refer to the graphic.



Host A and Host B use VLAN routing to facilitate communication. When interface G0/0/1.2 of RTA receives a frame from Host B, what will RTA do?

- A. RTA will immediately forward the frame via interface G0/0/1.1.
- B. RTA remove the VLAN tag before forwarding the frame.
- C. RTA will remove the VLAN tag and add a new tag for VLAN10 before forwarding the frame.
- D. RTA will discard the frame.

Correct Answer: B

Section: (none)

Explanation

Explanation/Reference:

QUESTION 274

Refer to the configuration output.

```
[Huawei-GigabitEthernet0/0/0.1] port link-type access
[Huawei-GigabitEthernet0/0/0.1] port default vlan 10
[Huawei-GigabitEthernet0/0/0.2] port link-type trunk
[Huawei-GigabitEthernet0/0/0.2] port trunk-allow pass vlan 10
```

Which of the following statements regarding the configuration output are correct? (Choose all that apply.)

- A. The PVID on interface GigabitEthernet0/0/1 is 10.
- B. The PVID on interface GigabitEthernet0/0/1 is 1.
- C. The PVID on interface GigabitEthernet0/0/2 is 10.
- D. The PVID on interface GigabitEthernet0/0/2 is 1.

Correct Answer: AD

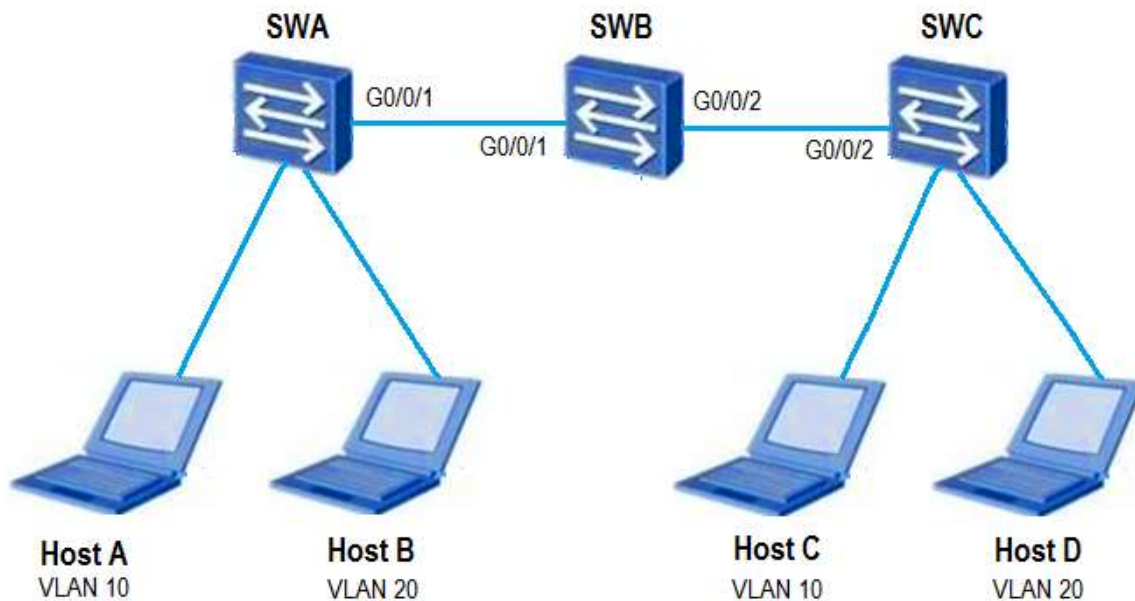
Section: (none)

Explanation

Explanation/Reference:

QUESTION 275

Refer to the graphic.



VLANs 10 and 20 have been created on both SWA and SWC. VLAN 10 has been manually created on SWB. SWB has learned VLAN 20 from SWA via GVRP, allowing the hosts to belong to different VLANs as shown. If port Interface G0/0/1 on SWB is changed to fixed mode, what will happen?

- A. Host A will still be able to communicate with Host C.
- B. Host B will still be able to communicate with Host D.
- C. Hosts that belong to the same VLAN will still be able to communicate.
- D. All hosts will be unable to communicate with any other host.

Correct Answer: A

Section: (none)

Explanation

Explanation/Reference:

QUESTION 276

On Sx7 series switches, which of the following VLANs can be removed by using command “undo”? (Choose all that apply.)

- A. vlan 1.
- B. vlan 2.
- C. vlan 1024.
- D. vlan 4094.

Correct Answer: BCD

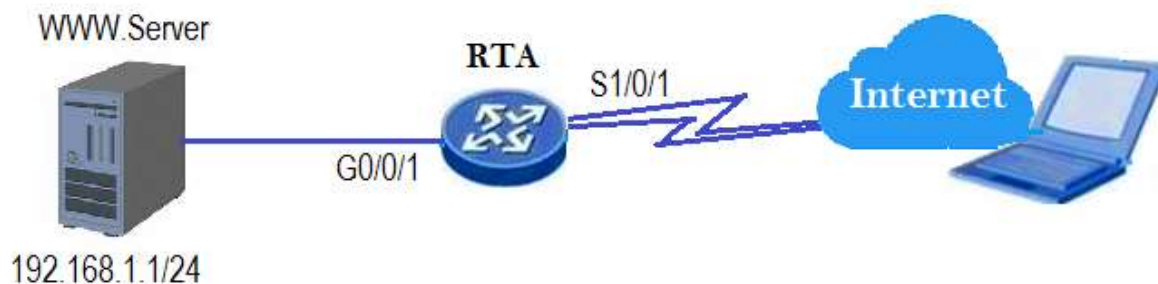
Section: (none)

Explanation

Explanation/Reference:

QUESTION 277

Refer to the graphic.



A web server in a private network is required to provide HTTP services to public users. The network administrator is required to configure NAT on RTA. Which configuration should be used?

- A. [RTA-Serial1/0/1]nat server protocol tcp global 202.10.10.1 www.inside 192.168.1.1 8080
- B. [RTA-Serial0/0/1]nat server protocol tcp global 192.168.1.1 www.inside 202.10.10.1 8080
- C. [RTA-Gigabitethernet0/0/1]nat server protocol tcp global 202.10.10.1 www.inside 192.168.1.1 8080
- D. [RTA-Gigabitethernet0/0/1]nat server protocol tcp global 192.168.1.1 www.inside 202.10.10.1 8080

Correct Answer: A

Section: (none)

Explanation

Explanation/Reference:

QUESTION 278

On an FR network, when the fr inarp command is executed, the interface where static address mapping entries have been configured sends an Inverse ARP Request packet to the remote device to replace the static address mapping entries.

- A. True

B. False

Correct Answer: B

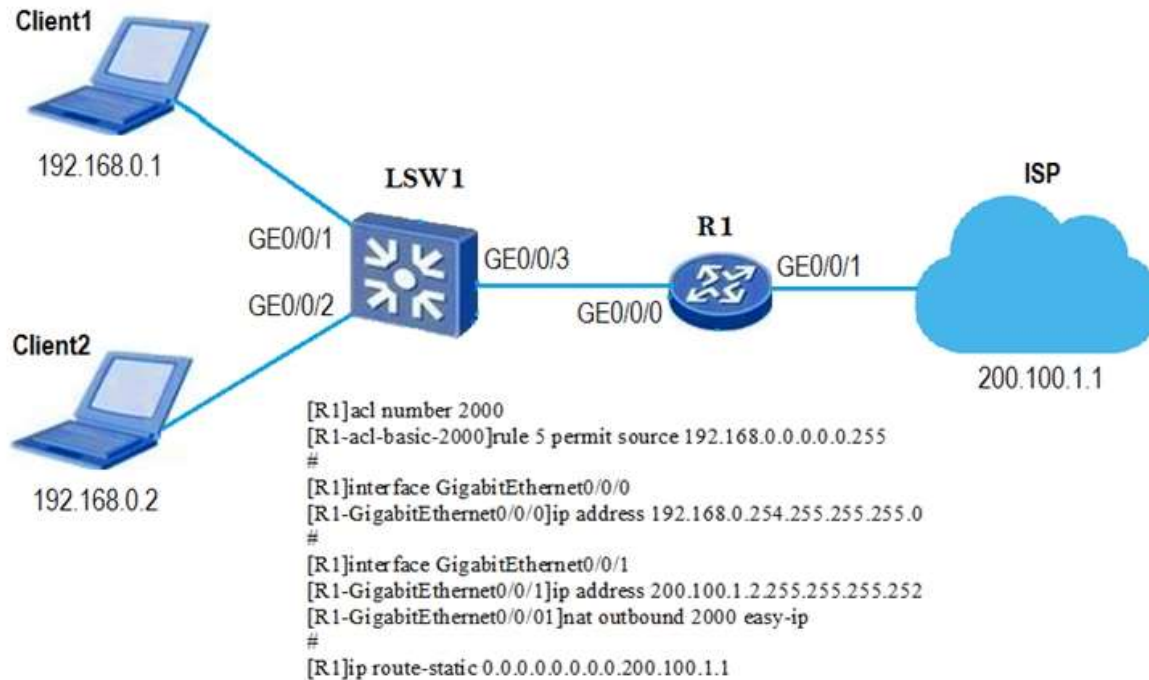
Section: (none)

Explanation

Explanation/Reference:

QUESTION 279

According to the configuration on R1 shown in the following figure, the two PCs can correctly access the ISP network.



A. True

B. False

Correct Answer: A

Section: (none)

Explanation

Explanation/Reference:

QUESTION 280

Which of the following fields are contained in an ARP packet?

A. Source Hardware Address

B. Hardware Type

C. Source Protocol Address

D. Operation Code

Correct Answer: B

Section: (none)

Explanation

Explanation/Reference:

QUESTION 281

Which of the following can be displayed on the Versatile Routing Platform (VRP) to indicate that GE port 2 on subcard 0 in slot 3 of a router?

- A. interface GigabitEthernet 3/2/0
- B. interface GigabitEthernet 3/0/2
- C. interface Ethernet 3/0/2
- D. interface XGigabitEthernet 3/0/2

Correct Answer: B

Section: (none)

Explanation

Explanation/Reference:

QUESTION 282

You can run the "startup saved-configuration backup.cfg" command on the user interface of the Versatile Routing Platform (VRP) to specify the "backup.cfg" file as the configuration file for next startup.

- A. True
- B. False

Correct Answer: A

Section: (none)

Explanation

Explanation/Reference:

QUESTION 283

When a network engineer enters a command, the following information is displayed:

Error: Unrecognized command found at '^' position. Which of the following statements is true about such information?

- A. The parameter type is incorrect.
- B. The entered command is incomplete.
- C. The entered parameter is not specified.
- D. No keyword is found.

Correct Answer: D

Section: (none)

Explanation

Explanation/Reference:

QUESTION 284

In RSTP mode, interfaces in the Discarding state discard received data frames but maintain the MAC address table based on received data frames.

- A. True
- B. False

Correct Answer: B
Section: (none)
Explanation

Explanation/Reference:

QUESTION 285

Which of the following statements is true about the MAC address table of a switch?

```
<Huawei>dis mac-address
MAC address table of slot 0:
```

MAC Address	VLAN/ VSI/SI	PEVLAN	CEVLAN	Port	Type	LSP/LSR-ID
					MAC-Tunnel	
5489-9811-0b49	1	-	-	Eth0/0/3	static	-

Total matching items on slot 0 displayed = 1

```
MAC address table of slot 0:
```

MAC Address	VLAN/ VSI/SI	PEVLAN	CEVLAN	Port	Type	LSP/LSR-ID
					MAC-Tunnel	
5489-989d-1d30	1	-	-	Eth0/0/1	dynamic	0/-
5489-9885-18a8	1	-	-	Eth0/0/2	dynamic	0/-

Total matching items on slot 0 displayed = 2

- A. The MAC address 5489-9811-0b49 is manually configured by the administrator.
- B. The MAC address 5489-989d-1d30 is manually configured by the administrator.
- C. The MAC address 5489-9885-18a8 is manually configured by the administrator.
- D. After the switch restarts, all the MAC addresses need to be learned again.

Correct Answer: A
Section: (none)
Explanation

Explanation/Reference:

QUESTION 286

The MAC address table of a switch is as follows. If the switch receives a data frame whose destination MAC address is 5489-9885-18a8 from Eth0/0/2, which of the following statements is true?

<Huawei>display mac-address
MAC address table of slot 0:

MAC Address	VLAN/ VSI/SI	PEVLAN	CEVLAN	Port	Type	LSP/LSR-ID
5489-9885-18a8	1	-	-	Eth0/0/2	dynamic	0/-
5489-989d-1d30	1	-	-	Eth0/0/1	dynamic	0/-

Total matching items on slot 0 displayed = 2

- A. The data frame is forwarded through Eth0/0/2.
- B. The data frame is flooded.
- C. The data frame is forwarded through Eth0/0/1.
- D. The data frame is discarded.

Correct Answer: D

Section: (none)

Explanation

Explanation/Reference:

QUESTION 287

Which of the following descriptions about STP designated ports is correct?

- A. Designated ports forward frames destined for the root switch.
- B. Designated ports represent the path leading to the root switch.
- C. Each bridge can have only one designated port.
- D. Designated ports are responsible for sending BPDU to connected network segments.

Correct Answer: D

Section: (none)

Explanation

Explanation/Reference:

QUESTION 288

What is the total length of the port ID in STP?

- A. 4 bits
- B. 8 bits
- C. 2 bits
- D. 16 bits

Correct Answer: D

Section: (none)

Explanation

Explanation/Reference:

QUESTION 289

Which of the following statements are true about STP BPDUs?

- A. During initialization, each switch enabled with STP proactively sends configuration BPDUs.
- B. BPDUs are encapsulated in Ethernet frames and the destination MAC address is a multicast MAC address.
- C. After STP is enabled on a port, the switch periodically sends TCN BPDUs through the designated port.
- D. STP has two types of packets: configuration BPDU and TCN BPDU.

Correct Answer: D

Section: (none)

Explanation

Explanation/Reference:

QUESTION 290

ICMP packets do not contain port numbers. Therefore, NAT cannot be used.

- A. True
- B. False

Correct Answer: B

Section: (none)

Explanation

Explanation/Reference:

QUESTION 291

Which of the following protocols can be used on a Layer 2 network with redundant links to prevent loops?

- A. UDP
- B. VRRP
- C. STP
- D. ARP

Correct Answer: C

Section: (none)

Explanation

Explanation/Reference:

QUESTION 292

You can configure a static route on a broadcast interface by specifying the next-hop IP address or outbound interface.

- A. True
- B. False

Correct Answer: A

Section: (none)

Explanation

Explanation/Reference:

QUESTION 293

What are the advantages of OSPF?

- A. OSPF supports packet authentication.
- B. OSPF can load balance traffic among equal-cost routes.
- C. OSPF supports Classless Inter-Domain Routing (CIDR).
- D. OSPF supports area partition.

Correct Answer: BCD

Section: (none)

Explanation

Explanation/Reference:

QUESTION 294

Which of the following statements are true about the default route?

- A. In a routing table, the route to 0.0.0.0 (with the mask being 0.0.0.0) is the default route.
- B. If the destination address of a packet does not match any entry in the routing table, the packet is forwarded through the default route.
- C. The default route can only be manually configured by the administrator.
- D. The routing table of any router must contain the default route.

Correct Answer: AB

Section: (none)

Explanation

Explanation/Reference:

QUESTION 295

Which of the following OSPF packets can ensure LSA update reliability?

- A. DD
- B. LSR
- C. LSU
- D. LSACK

Correct Answer: C

Section: (none)

Explanation

Explanation/Reference:

QUESTION 296

Which layer of the OSI reference model does a router work at?

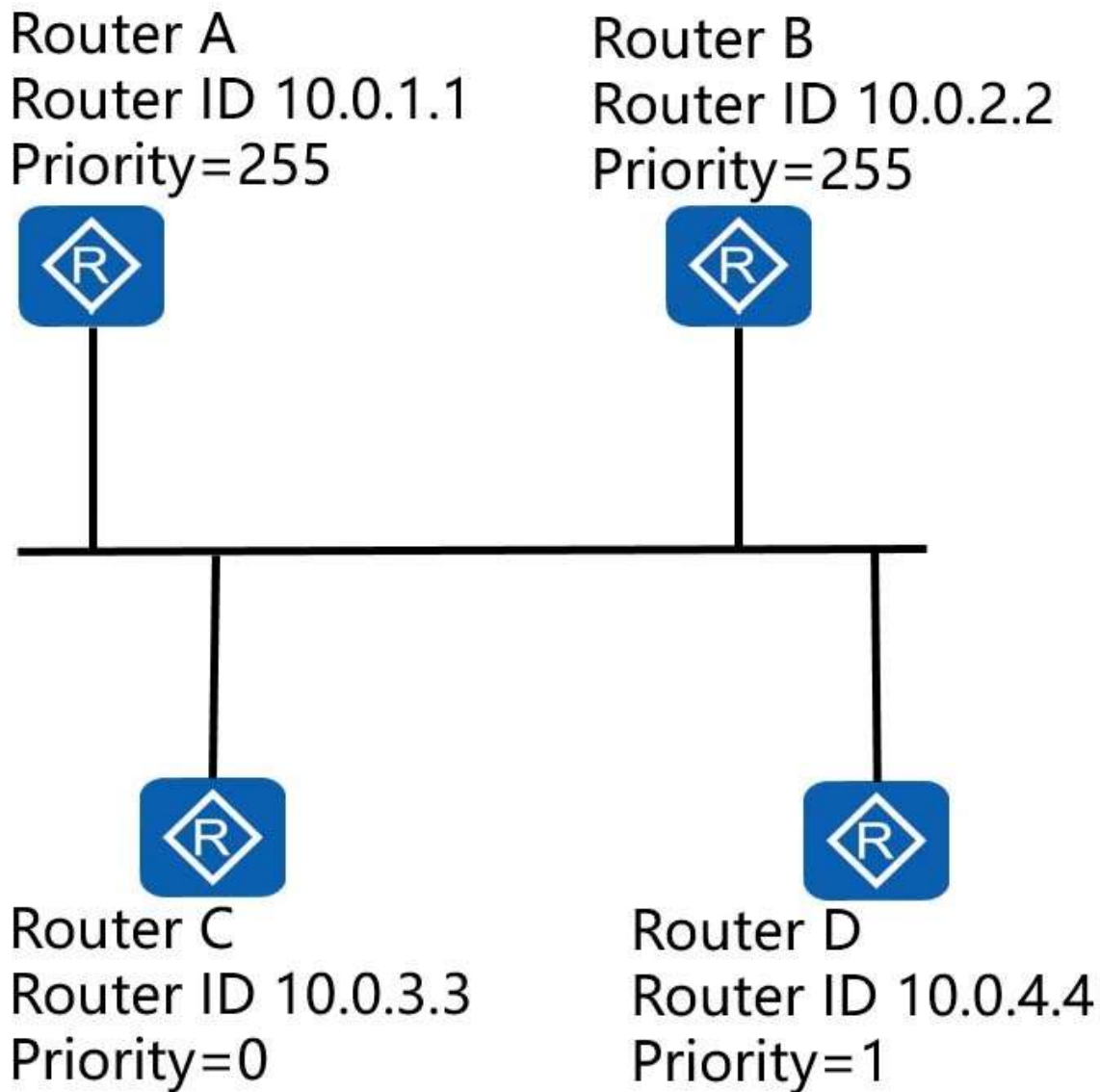
- A. Application layer
- B. Data link layer
- C. Network layer
- D. Transport layer

Correct Answer: C
Section: (none)
Explanation

Explanation/Reference:

QUESTION 297

On the network shown in the figure, if all routers run OSPF, which router is elected as the BDR?



- A. Router B
- B. Router A
- C. Router D
- D. Router C

Correct Answer: B

Section: (none)
Explanation

Explanation/Reference:

QUESTION 298

The output of the following command on router R1 is as follows.

```
<R1>display ip routing-table
```

```
Route Flags: R - relay, D - download to fib
```

```
-----  
Routing Tables: Public
```

```
Destinations : 13      Routes : 13
```

Destination/Mask	Proto	Pre	Cost	Flags	NextHop	Interface
0.0.0.0/0	Static	60	0	RD	10.0.14.4	GigabitEthernet0/0/0
10.0.0.0/8	Static	60	0	RD	10.0.12.2	Ethernet0/0/0
10.0.2.0/24	Static	60	0	RD	10.0.13.3	Ethernet0/0/2
10.0.2.2/32	OSPF	10	50	RD	10.0.21.2	Ethernet0/0/1

Which of the following statements are true?

- A. The router discards the packets destined for 11.0.0.0/8.
- B. The packets destined for 12.0.0.0/8 are forwarded through Ethernet0/0/0 on the router.
- C. The router forwards the packets destined for 12.0.0.0/8.
- D. The packets destined for 11.0.0.0/8 are forwarded through GigabitEthernet0/0/0 on the router.

Correct Answer: CD

Section: (none)

Explanation

Explanation/Reference:

QUESTION 299

Which of the following statements about the "ip route-static 10.0.2.2 255.255.255.255 10.0.12.2 preference 20" command is true?

- A. The destination network address of the route is 10.0.12.2/32.
- B. The mask length of the destination network address of the route is 32 bits.
- C. The preference of the route is 100.
- D. The route must exist in the routing table.

Correct Answer: B

Section: (none)

Explanation

Explanation/Reference:

QUESTION 300

Which of the following data packets are the OSPF protocol packets encapsulated into?

- A. HTTP packet
- B. TCP packet
- C. IP packet
- D. UDP packet

Correct Answer: C

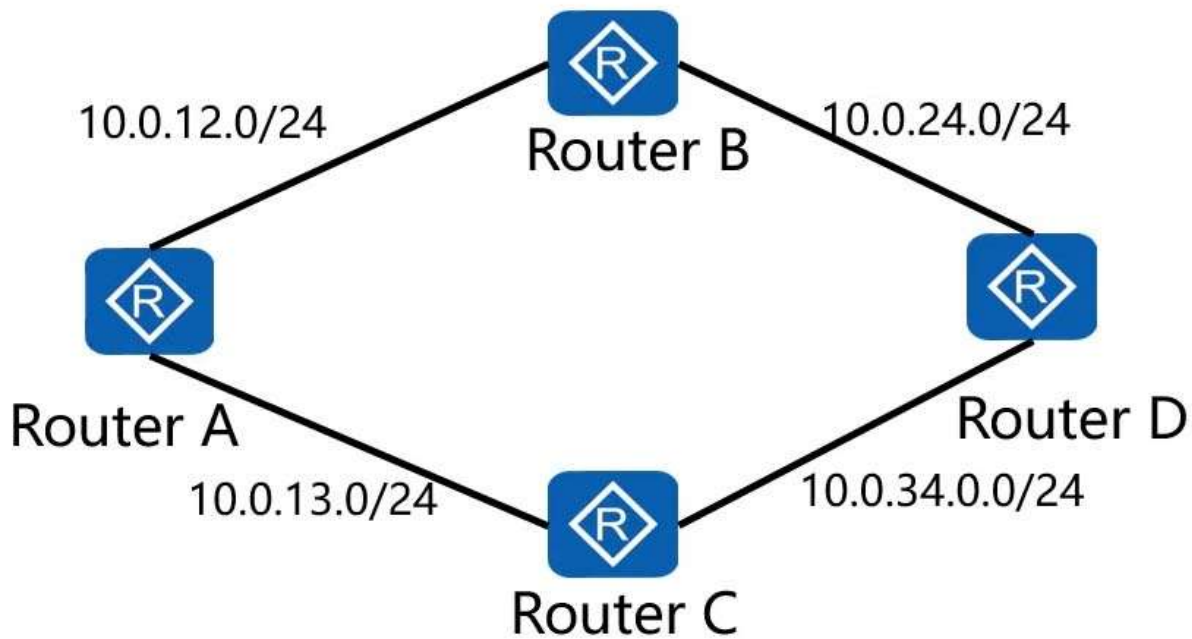
Section: (none)

Explanation

Explanation/Reference:

QUESTION 301

On the network shown in the figure, if all links are Ethernet links and all routers run OSPF, how many DRs will be elected on the entire network?



- A. 2
- B. 4
- C. 3
- D. 1

Correct Answer: B

Section: (none)

Explanation

Explanation/Reference:

QUESTION 302

```
[Huawei]user-interface vty 0 14
[Huawei-ui-vty0-14]acl 2000 inbound
[Huawei-ui-vty0-14]user privilege level 3
[Huawei-ui-vty0-14]authentication-mode password
Please configure the login password (maximum length 16):huawei
```

As shown in the preceding VTY configuration, the user privilege level is set to 3.

- A. True
- B. False

Correct Answer: A

Section: (none)

Explanation

Explanation/Reference:

QUESTION 303

What is the main function of DHCP Discover packets?

- A. The client sends DHCP Discover packets for requesting to confirm the configuration or renew the lease time of the IP address.
- B. The DHCP server sends DHCP Discover packets to respond DHCP Request packets.
- C. The DHCP Discover packet carries various configuration information.
- D. The client sends DHCP Discover packets to search for the DHCP server.

Correct Answer: D

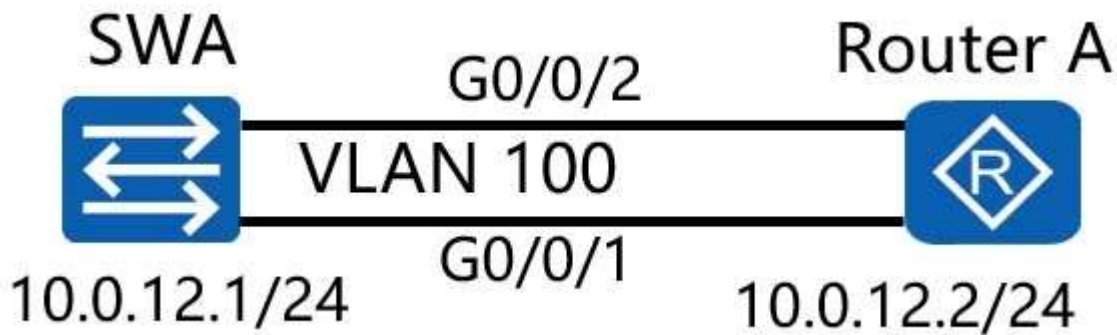
Section: (none)

Explanation

Explanation/Reference:

QUESTION 304

As shown in the following figure, switch A and router A are connected through two links. The two links are aggregated in manual load balancing mode. The aggregation port number is 1. The aggregated link needs to carry VLAN tag 100. Switch A uses the trunk link.



Which of the following configurations need to be performed on switch A?

- A.

```
interface Eth-Trunk1
ip address 10.0.12.1 255.255.255.0
#
```
- B.

```
interface Eth-Trunk1
mode lacp-static
port link-type trunk
port trunk allow-pass vlan 100
#
interface GigabitEthernet0/0/1
eth-trunk 1
#
interface GigabitEthernet0/0/2
eth-trunk 1
#
```
- C.

```
interface Eth-Trunk1
port link-type trunk
port trunk allow-pass vlan 100
#
interface GigabitEthernet0/0/1
eth-trunk 1
#
interface GigabitEthernet0/0/2
eth-trunk 1
#
```
- D.

```
interface Vlanif100
ip address 10.0.12.1 255.255.255.0
#
```

Correct Answer: B
Section: (none)
Explanation

Explanation/Reference:

QUESTION 305

What is the total length of the VLAN frame defined by IEEE 802.1Q?

- A. 4
- B. 3
- C. 2
- D. 1

Correct Answer: A

Section: (none)

Explanation

Explanation/Reference:

QUESTION 306

Which of the following is the feature of port-based VLAN assignment?

- A. VLAN IDs are allocated based on the protocol type and encapsulation format of data frames.
- B. The VLAN does not need to be configured again when hosts move.
- C. The VLAN tag is added to data frames based on the IP address carried in the frames.
- D. The VLAN needs to be configured again when hosts move.

Correct Answer: D

Section: (none)

Explanation

Explanation/Reference:

QUESTION 307

If an Ethernet data frame carries Length/Type = 0x8100, which of the following cannot be the payload of the data frame?

- A. RSTP data frame
- B. OSPF packet
- C. ARP response packet
- D. STP data frame

Correct Answer: AD

Section: (none)

Explanation

Explanation/Reference:

QUESTION 308

Which of the following statements about a port on a switch is false?

```
interface GigabitEthernet0/0/1
port link-type trunk
port trunk pvid vlan 200
port trunk allow-pass vlan 100
#
```

- A. If the port receives data frames without VLAN tags, the switch needs to add VLAN tag 200.
- B. If the VLAN tag carried in a data frame is 100, the switch removes the VLAN tag and sends the frame.
- C. The link type of the port is trunk.
- D. The port cannot send data frames carrying VLAN tag 200.

Correct Answer: C

Section: (none)

Explanation

Explanation/Reference:

QUESTION 309

According to the following topology and configuration, R1 and R2 are connected through low-speed serial cables and PPP is used to encapsulate data link layer packets. When the Holdtime values of R1 and R2 are different, PPP negotiation and communication fail.



```
[R1]interface serial0/0/0
[R1-serial0/0/0]ip address 202.10.1.1 255.255.255.0
[R1-serial0/0/0]timer hold 2
#
[R2]interface serial0/0/0
[R2-serial0/0/0]ip address 202.10.1.2 255.255.255.0
```

- A. True
- B. False

Correct Answer: B

Section: (none)

Explanation

Explanation/Reference:

QUESTION 310

Which of the following is not included in AAA?

- A. Audit
- B. Authentication
- C. Authorization
- D. Accounting

Correct Answer: A

Section: (none)

Explanation

Explanation/Reference:

QUESTION 311

Which of the following encapsulation modes are supported by IPsec VPN? (Choose two.)

- A. Routing mode
- B. Tunnel mode
- C. Transport mode
- D. Switching mode

Correct Answer: BC

Section: (none)

Explanation

Explanation/Reference:

QUESTION 312

The IKE protocol is used to set up an SA for IPsec automatic negotiation. Identity authentication can be performed when the IP address of the initiator changes dynamically.

- A. True
- B. False

Correct Answer: A

Section: (none)

Explanation

Explanation/Reference:

QUESTION 313

Which of the following SNMP packets is sent by the agent on the managed device to the NMS?

- A. Get-Request
- B. Response
- C. Get-Next-Request
- D. Set-Request

Correct Answer: B

Section: (none)

Explanation

Explanation/Reference:

QUESTION 314

The RADIUS information of the router is configured as follows.

```
radius-server template huawei
radius-server shared-key cipher huawei
radius-server authentication 200.0.12.1 1812
radius-server accounting 200.0.12.1 1813
radius-attribute nas-ip 200.0.12.2
#
```

Which of the following statements are correct? (Choose three.)

- A. The IP address of the authentication server is 200.0.12.1.
- B. The IP address of the authorization server is 200.0.12.1.
- C. The source IP address of the RADIUS packets sent by the router is 200.0.12.2.
- D. The IP address of the accounting server is 200.0.12.1.

Correct Answer: ACD

Section: (none)

Explanation

Explanation/Reference:

QUESTION 315

Which of the following information must be configured for a DHCPv6 relay agent?

- A. DHCPv6 address pool
- B. DNS server address
- C. IPv6 address of the DHCPv6 server
- D. DHCPv6 DUID

Correct Answer: C

Section: (none)

Explanation

Explanation/Reference:

QUESTION 316

Which of the following statements are true according to the following command output?

```
[Router A]display ospfv3 peer verbose
OSPFv3 Process (1)
```

```
Neighbor 10.0.2.2 is Full, interface address FE80::2E0:FCFF:FEBB:6CF9
  In the area 0.0.0.0 via interface GE0/0/0
  DR Priority is 1 DR is 10.0.2.2 BDR is 10.0.1.1
  Options is 0x000013 (-|R|-|-|E|V6)
  Dead timer due in 00:00:35
  Neighbour is up for 00:12:10
  Database Summary Packets List 0
  Link State Request List 0
  Link State Retransmission List 0
  Neighbour Event: 6
  Neighbour If Id : 0x3
```

- A. The OSPFv3 area ID is 0.
- B. The OSPFv3 process ID is 1.
- C. The DR priority of the local router is 1.
- D. The router ID of the neighbor is 10.0.1.1.

Correct Answer: ABC

Section: (none)

Explanation

Explanation/Reference:

QUESTION 317

According to the following configuration of Router C, how many global unicast address prefixes are advertised by Router C?

```
<Router C>display ospfv3 interface
GigabitEthernet0/0/0 is up, line protocol is up
Interface ID 0x3
Interface MTU 1500
IPv6 Prefixes
  FE80::2E0:FCFF:FE48:4EC8 (Link-Local Address)
  2003::1/64
  2005::1/64
  2009::1/64
OSPFv3 Process (1), Area 0.0.0.0, Instance ID 0
Router ID 10.0.3.3, Network Type BROADCAST, Cost: 1
Transmit Delay is 1 sec, State DROther, Priority 1
Designated Router (ID) 10.0.2.2
Interface Address FE80::2E0:FCFF:FEBB:6CF9
Backup Designated Router (ID) 10.0.1.1
Interface Address FE80::2E0:FCFF:FEC6:4A10
Timer interval configured, Hello 10, Dead 40, Wait 40, Retransmit 5
  Hello due in 00:00:08
Neighbor Count is 3, Adjacent neighbor count is 2
Interface Event 2, Lsa Count 4, Lsa Checksum 0x173fe
Interface Physical BandwidthHigh 0, BandwidthLow 1000000000
```

- A. 1
- B. 4
- C. 2
- D. 3

Correct Answer: D

Section: (none)

Explanation

Explanation/Reference:

QUESTION 318

If the MAC address of an interface is 0EE0-FFFE-0FEC, the corresponding EUI-64 address is ().

- A. 0CE0-FFFF-FEFE-0FEC
- B. 0EE0-FFFF-FEFE-0FEC
- C. 0EE0-FFFE-FFFE-0FEC
- D. 0CE0-FFFE-FFFE-0FEC

Correct Answer: D

Section: (none)

Explanation

Explanation/Reference:

QUESTION 319

Which of the following address types are of IPv6 addresses?

- A. Unicast address
- B. Anycast address
- C. Multicast address
- D. Broadcast address

Correct Answer: ABC

Section: (none)

Explanation

Explanation/Reference:

QUESTION 320

Segment routing-traffic engineering (SR-TE) is a new TE tunneling technology that uses SR as a control protocol. All nodes of an SR-TE tunnel, including the ingress and transit nodes, must be aware of the tunnel and complete label distribution and forwarding.

- A. True
- B. False

Correct Answer: A

Section: (none)

Explanation

Explanation/Reference:

QUESTION 321

In the MPLS domain, the full name of LER is label egress router.

- A. True
- B. False

Correct Answer: B

Section: (none)

Explanation

Explanation/Reference:

QUESTION 322

Which area ID is used by OSPFv3 to identify the backbone area?

- A. 0
- B. 3
- C. 2
- D. 1

Correct Answer: A

Section: (none)

Explanation

Explanation/Reference:

QUESTION 323

The output of the “display vlan” command on a switch is as follows.

```
[SWA]display vlan
The total number of vlans is : 5
-----
U: Up;      D: Down;    TG: Tagged;    UT: Untagged;
MP: Vlan-mapping;    ST: Vlan-stacking;
#: ProtocolTransparent-vlan;  *: Management-vlan;
-----

VID Type  Ports
-----
1  common UT:GE0/0/3(D)  GE0/0/4(D)  GE0/0/5(D)  GE0/0/6(D)
      GE0/0/7(D)  GE0/0/8(D)  GE0/0/9(D)  GE0/0/10(D)
      GE0/0/11(D)  GE0/0/12(D)  GE0/0/13(D)  GE0/0/14(D)
      GE0/0/15(D)  GE0/0/16(D)  GE0/0/17(D)  GE0/0/18(D)
      GE0/0/19(D)  GE0/0/20(D)  GE0/0/21(D)  GE0/0/22(D)
      GE0/0/23(D)  GE0/0/24(D)
      TG:GE0/0/1(U)

10 common UT:GE0/0/1(U)  GE0/0/2(U)
20 common TG:GE0/0/1(U)

30 common TG:GE0/0/1(U)

40 common TG:GE0/0/1(U)
```

Which of the following statements are true?

- A. When GE0/0/1 of the switch forwards data frames from VLAN 20, the frames are untagged.
- B. When GE0/0/1 of the switch forwards data frames from VLAN 10, the frames are untagged.
- C. When GE0/0/2 of the switch forwards data frames from VLAN 20, the frames are tagged.
- D. Four VLANs are manually created.

Correct Answer: BD

Section: (none)

Explanation

Explanation/Reference:

QUESTION 324

Which of the following authentication method is more secure for PPP?

- A. CHAP.
- B. MD5.

- C. SSH.
- D. PAP.

Correct Answer: A

Section: (none)

Explanation

Explanation/Reference:

QUESTION 325

Which of the following cannot be the length of an IPv4 packet header?

- A. 64B
- B. 60B
- C. 20B
- D. 32B

Correct Answer: A

Section: (none)

Explanation

Explanation/Reference:

QUESTION 326

The following shows a command output on a device. Which of the following statements are true? (Choose three.)

```
<Huawei>display interface GigabitEthernet 0/0/0
GigabitEthernet0/0/0 current state : UP
Line protocol current state : UP
Route Port, The Maximum Transmit Unit is 1000
Internet Address is 10.0.12.2/24
IP Sending Frames' Format is PKTFMT_ETHNT_2, Hardware address is 00e0-fc22-4fff
Port Mode: FORCE COPPER
Speed : 100, Loopback: NONE
Duplex: FULL, Negotiation: DISABLE
Mdi : AUTO
Last 300 seconds input rate 24 bits/sec, 0 packets/sec
Last 300 seconds output rate 24 bits/sec, 0 packets/sec
```

- A. The IP address of the interface is 10.0.12.2/24.
- B. The MTU value of the interface is 1000.
- C. The working rate of the interface is 1 Gbit/s.
- D. The MAC address of the interface is 00e0-fc22-4fff.

Correct Answer: ABD

Section: (none)

Explanation

Explanation/Reference:

QUESTION 327

If the "user-interface maximum-vty 0" command is run on a router, which of the following statements is true?

- A. A maximum of 5 VTY users can access the router at the same time.
- B. No user can log in to the router through Telnet or SSH.
- C. A maximum of 15 VTY users can access the router at the same time.
- D. A maximum of 4 VTY users can access the router at the same time.

Correct Answer: B

Section: (none)

Explanation

Explanation/Reference:

QUESTION 328

Which of the following methods is not used for logging in to the VRP system?

- A. SSH.
- B. Web.
- C. Netstream.
- D. Telnet.

Correct Answer: C

Section: (none)

Explanation

Explanation/Reference:

QUESTION 329

After a device is reset, an interface card is hot swapped, or an interface card is reset, the saved MAC address entries on the device or interface card are not lost.

- A. True
- B. False

Correct Answer: B

Section: (none)

Explanation

Explanation/Reference:

QUESTION 330

Which of the following MAC addresses are not aged out? (Choose two.)

- A. Static MAC address
- B. Dynamic MAC address
- C. Blackhole MAC address
- D. Port MAC address

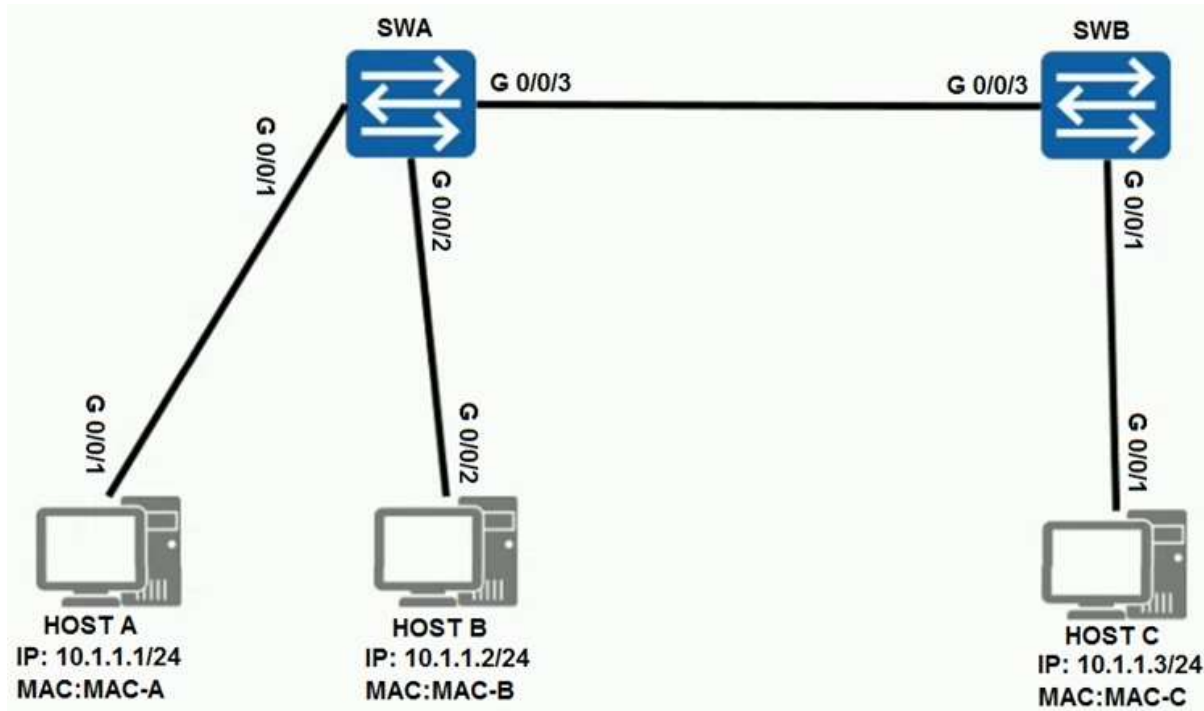
Correct Answer: AC

Section: (none)
Explanation

Explanation/Reference:

QUESTION 331

As shown in the figure, all hosts can communicate with each other. Which of the following is true about the mapping relationships between MAC addresses and ports on SWB?



- A. MAC-A G0/0/2
MAC-B G0/0/2
MAC-C G0/0/3
- B. MAC-A G0/0/3
MAC-B G0/0/3
MAC-C G0/0/1
- C. MAC-A G0/0/1
MAC-B G0/0/1
MAC-C G0/0/3
- D. MAC-A G0/0/1
MAC-B G0/0/2
MAC-C G0/0/3

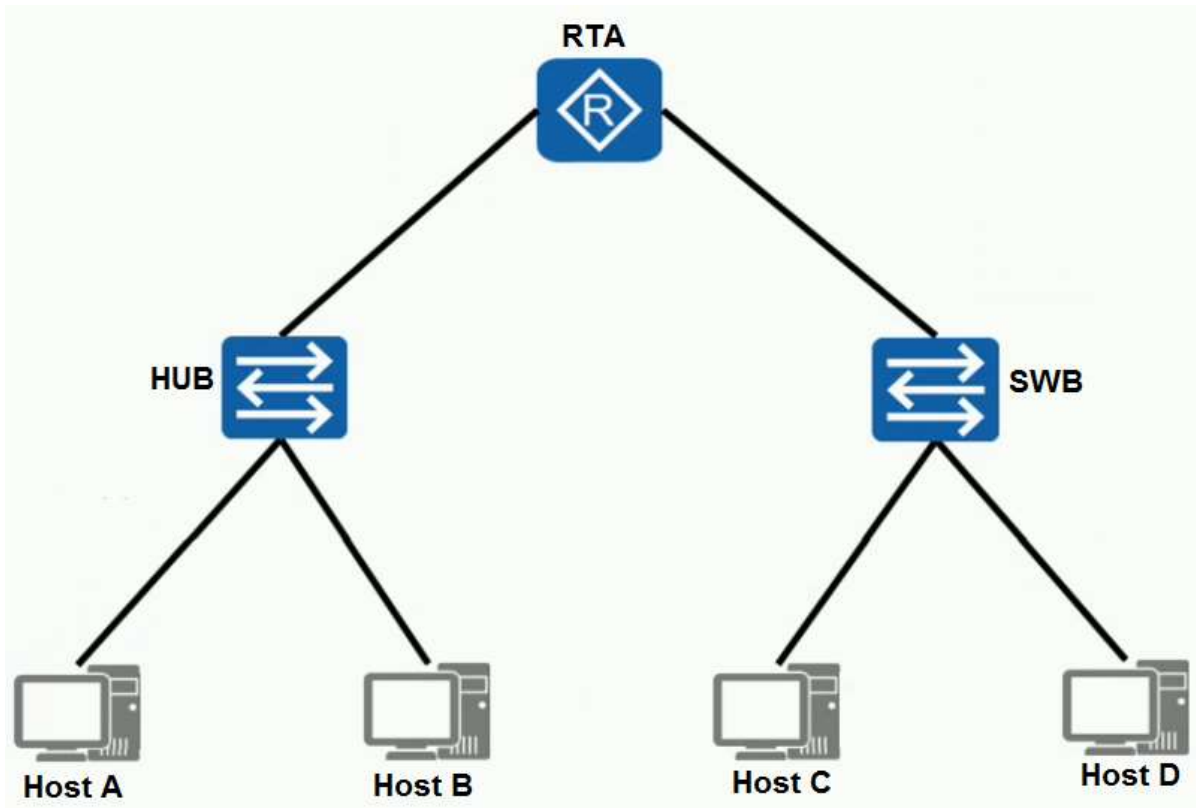
Correct Answer: B

Section: (none)
Explanation

Explanation/Reference:

QUESTION 332

Refer to the graphic. Which of the following statement describes the network shown?



- A. There are 4 collision domains in the network.
- B. There are 2 broadcast domains in the network.
- C. There are 6 broadcast domains in the network.
- D. There are 6 collision domains in the network.

Correct Answer: B

Section: (none)

Explanation

Explanation/Reference:

QUESTION 333

Which of the following statements is true about the Forward Delay timer of STP?

- A. Reduce the interval for sending BPDUs.
- B. Improve the configuration BPDU lifetime, ensuring that the configuration BPDUs can be forwarded to more switches.
- C. Improve the STP convergence speed.
- D. Prevent temporary loops.
- E. Delay is required when a port transitions between Blocking and Disabled.

Correct Answer: D

Section: (none)

Explanation

Explanation/Reference:

QUESTION 334

Which of the following statements is true about the MAC address table of a switch?

```
[Huawei]dis mac-address
```

```
MAC address table of slot 0:
```

```
-----  
MAC Address      VLAN/          PEVLAN CEVLAN Port  Type  LSP/LSR-ID  
                VSI/SI                               MAC-Tunnel
```

```
-----  
5489-9885-18a8 1  - - -      blackhole -  
5489-9811-0b49 1  - - Eth0/0/3  static -
```

```
-----  
Total matching items on slot 0 displayed = 2
```

```
MAC address table of slot 0:
```

```
-----  
MAC Address      VLAN/          PEVLAN CEVLAN Port  Type  LSP/LSR-ID  
                VSI/SI                               MAC-Tunnel
```

```
-----  
5489-989d-1d30 1  - -  Eth0/0/1  dynamic 0/-  
-----  
- -
```

```
-----  
Total matching items on slot 0 displayed = 1
```

- A. The switch discards the data frame whose source MAC address is 5489-9811-0b49.
- B. The switch discards the data frame whose destination MAC address is 5489-9885-18a8.
- C. The switch discards the data frame whose destination MAC address is 5489-9811-0b49.
- D. The switch discards the data frame whose destination MAC address is 5489-989d-1d30.

Correct Answer: B

Section: (none)

Explanation

Explanation/Reference:

QUESTION 335

Which of the following parameters is not contained in STP configuration BPDUs?

- A. Root ID
- B. VLAN ID
- C. Bridge ID
- D. Port ID

Correct Answer: B

Section: (none)
Explanation

Explanation/Reference:

QUESTION 336

Which layer of the OSI reference model does a router work at?

- A. Physical layer
- B. Data link layer
- C. Network layer
- D. Transport layer

Correct Answer: C

Section: (none)
Explanation

Explanation/Reference:

QUESTION 337

Which of the following entries is not included in the routing table?

- A. MAC
- B. Next-hop address
- C. Destination/Mask
- D. Cost

Correct Answer: A

Section: (none)
Explanation

Explanation/Reference:

QUESTION 338

According to the figure, which of the following statements is true?



- A. Host A and Host B can communicate with each other only when the IP addresses of host A and host B have the same masks.
- B. Host A can successfully ping host B.
- C. The IP address mask of Host A is different from that of Host B. Therefore, Host A and Host B cannot communicate with each other.
- D. The broadcast addresses of Host A and Host B are the same.

Correct Answer: B
Section: (none)
Explanation

Explanation/Reference:

QUESTION 339

Which of the following packets is used by OSPF to discover and maintain neighbor relationships?

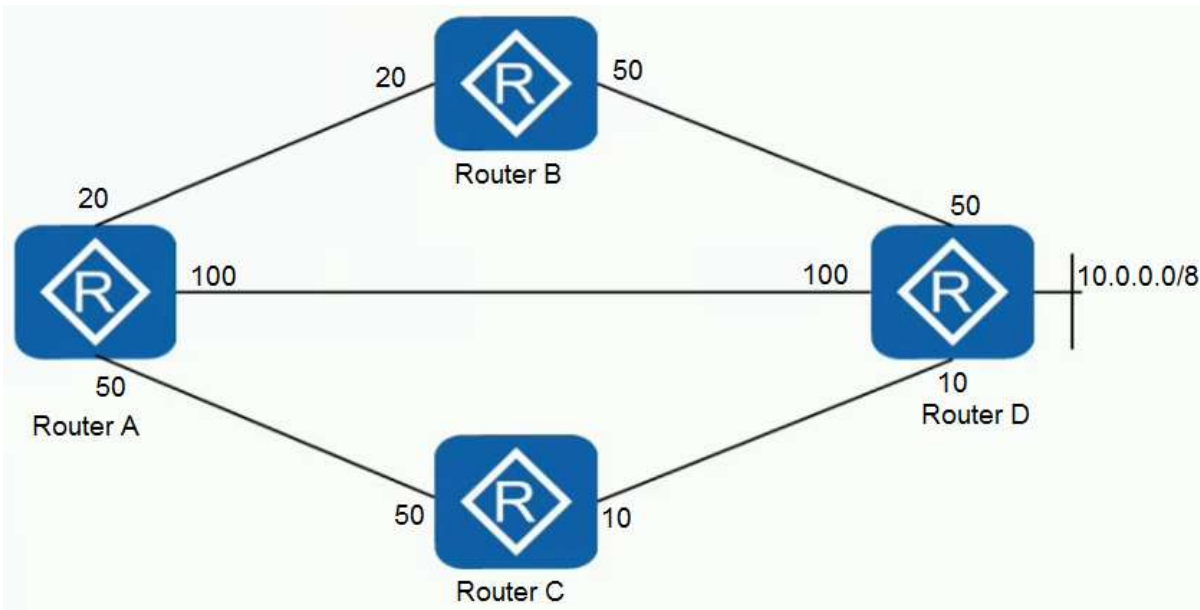
- A. HELLO
- B. LSU
- C. LSR
- D. DD

Correct Answer: A
Section: (none)
Explanation

Explanation/Reference:

QUESTION 340

On the network shown in the figure, all routers run OSPF and the cost value is above the link. Which of the following is the path for Router A to send packets to 10.0.0.0/8?



- A. A-B-D
- B. A-C-D
- C. RA fails to reach 10.0.0.0/8.
- D. A-D

Correct Answer: B
Section: (none)
Explanation

Explanation/Reference:

QUESTION 341

An administrator wishes to configure a floating static route. In order to successfully achieve this, which operation should be performed?

- A. The administrator is required to configure a different preference values for the primary static route and floating static route.
- B. The administrator is required to configure a different costs metric for the primary static route and floating static route.
- C. The administrator is required to configure different route tags for the primary static route and floating static route.
- D. The administrator is only required to configure two static routes.

Correct Answer: A

Section: (none)

Explanation

Explanation/Reference:

QUESTION 342

If a route destined for the same network has multiple next hops, what is the route?

- A. Sub-optimal route
- B. Multi-path route
- C. Default route
- D. Equal-cost route

Correct Answer: D

Section: (none)

Explanation

Explanation/Reference:

QUESTION 343

When searching the routing table, a router follows the longest matching rule.

Which of the following parameters does the length is the longest matching rule indicate?

- A. Next-hop IP address length
- B. Cost
- C. Mask length
- D. Preference value of the routing protocol

Correct Answer: C

Section: (none)

Explanation

Explanation/Reference:

QUESTION 344

What is the default priority of static routes on a Huawei AR router?

- A. 120
- B. 60
- C. 0
- D. 100

Correct Answer: B

Section: (none)

Explanation

Explanation/Reference:

QUESTION 345

To enable Router A to communicate with loopback 0 on Router B on the network shown in the figure, which of the following commands needs to be run on Router A?



- A. ip route-static 10.2.2 32 GigabitEthernet 0/0/0
- B. ip route-static 10.2.2 0 GigabitEthernet 0/0/0
- C. ip route-static 10.0.2.2 255.255.255.255 10.0.12.2
- D. ip route-static 10.0.2.2 255.255.255.255 10.0.12.1

Correct Answer: C

Section: (none)

Explanation

Explanation/Reference:

QUESTION 346

Segment routing (SR) defines destination address prefixes/nodes and adjacencies on the network as segments and allocates segment IDs (SIDs) to these segments. Adjacency and prefix/node SIDs are non-sequentially arranged in a segment list to form a forwarding path.

- A. True
- B. False

Correct Answer: B

Section: (none)

Explanation

Explanation/Reference:

QUESTION 347

Which of the following OSPF packets can be used to confirm the received Link State Update (LSU) packets?

- A. LSR

- B. LSA
- C. LSU
- D. LSACK

Correct Answer: D

Section: (none)

Explanation

Explanation/Reference:

QUESTION 348

Which of the following statements about the “ip route-static 10.0.2.2 255.255.255.255 10.0.12.2 preference 20” command is true?

- A. The next-hop IP address of the route is 10.0.12.2
- B. The route can guide forwarding of the data packets with the destination IP address 10.0.2.2.
- C. The preference of the route is 20.
- D. The route can guide forwarding of the data packets with the destination IP address 10.0.12.2.

Correct Answer: ABC

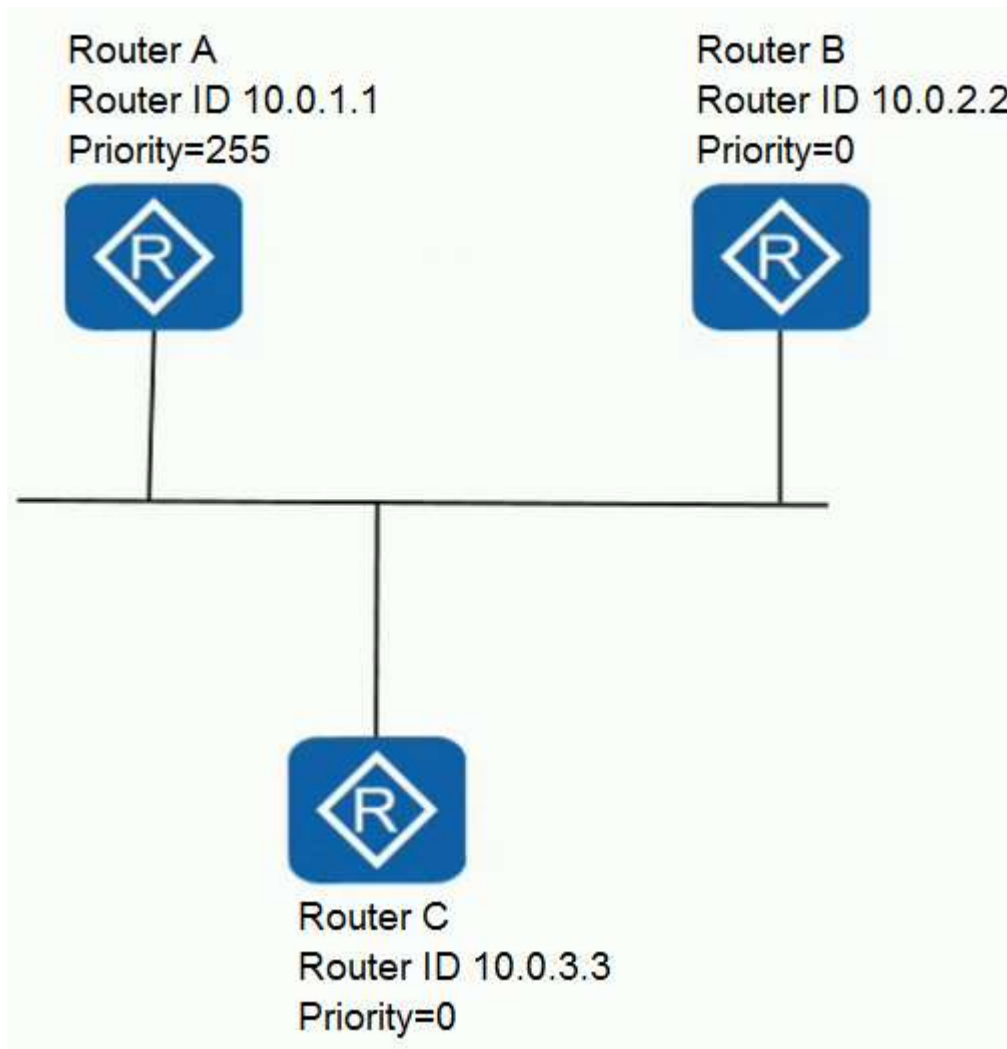
Section: (none)

Explanation

Explanation/Reference:

QUESTION 349

On the network shown in the figure, after the OSPF protocol state is stable, what is the neighbor status between Router A and Router B?



- A. Attempt
- B. Full
- C. 2-way
- D. Down

Correct Answer: C

Section: (none)

Explanation

Explanation/Reference:

QUESTION 350

Which of the following statements is true?

- A. Switches work at the physical layer.
- B. Switches work at the network layer.
- C. Routers work at the network layer.
- D. Routers work at the physical layer.

Correct Answer: C

Section: (none)

Explanation

Explanation/Reference:

QUESTION 351

What is the destination IP address of DHCP Discover packets?

- A. 127.0.0.1
- B. 224.0.0.1
- C. 224.0.0.2
- D. 255.255.255.255

Correct Answer: D

Section: (none)

Explanation

Explanation/Reference:

QUESTION 352

The following shows the DHCP address pool configuration of a router. Which of the following statements are true? (Choose three.)

```
#  
ip pool test  
network 192.168.1.0 mask 255.255.255.0  
excluded-ip-address 192.168.1.200 192.168.1.254  
lease day 0 hour 12 minute 0  
#
```

- A. The lease time of the IP address is 12 hours.
- B. The DHCP client may obtain the IP address 192.168.1.2.
- C. The address pool has 199 available IP addresses.
- D. The address pool has 55 available IP addresses.

Correct Answer: ABC

Section: (none)

Explanation

Explanation/Reference:

QUESTION 353

The following shows the Eth-Trunk information on a switch. Which of the following commands can be used to delete Eth-Trunk 1?

```

<SW1> display interface Eth-Trunk 1
Eth-Trunk1 current state : UP
Line protocol current state : UP
Description:
Switch Port, PVID : 1, Hash arithmetic : According to SIP-XOR-DIP, Maximal BW:
2G, Current BW: 2G, The Maximum Frame Length is 9216
IP Sending Frames' Format is PKTFMT_ETHNT_2, Hardware address is 4c1f-ccb0-73d7
Current system time: 2019-02-28 10:28:09-08:00
                Input bandwidth utilization : 0%
                Output bandwidth utilization : 0%

```

PortName	Status	Weight
GigabitEthernet0/0/1	UP	1
GigabitEthernet0/0/2	UP	1

```

The Number of Ports in Trunk : 2
The Number of UP Ports in Trunk : 2

```

- A. undo interface Eth-Trunk 1
- B. inte GigabitEthernet 0/0/1
undo eth-trunk
quit
inte GigabitEthernet 0/0/2
undo eth-trunk
quit
undo interface Eth-Trunk 1
- C. inte GigabitEthernet 0/0/1
undo eth-trunk
quit
undo interface Eth-Trunk 1
- D. inte GigabitEthernet 0/0/2
undo eth-trunk
quit
undo interface Eth-Trunk 1

Correct Answer: B

Section: (none)

Explanation

Explanation/Reference:

QUESTION 354

Which of the following statements about VLANIF interfaces is correct?

- A. Different VLANIF interfaces can use the same IP address.
- B. A VLANIF interface does not have a MAC address.
- C. VLANIF interfaces do not need to learn MAC addresses.
- D. A VLANIF interface is a Layer 3 interface.

Correct Answer: D

Section: (none)

Explanation

Explanation/Reference:

QUESTION 355

According to the VLAN frame format defined in IEEE 802.1Q, how many bits does a VLAN ID contain?

- A. 6
- B. 8
- C. 10
- D. 12

Correct Answer: D

Section: (none)

Explanation

Explanation/Reference:

QUESTION 356

What is the value of the Flag field in the PPP frame format?

- A. 0x7E
- B. 0xFF
- C. 0x8E
- D. 0xEF

Correct Answer: A

Section: (none)

Explanation

Explanation/Reference:

QUESTION 357

Two routers are connected through serial interfaces and support PPP encapsulation.

Which parameters must be negotiated to establish the PPP connection? (Choose three.)

- A. MRU
- B. Authentication password
- C. Magic-Number
- D. Authentication Protocol

Correct Answer: ACD

Section: (none)

Explanation

Explanation/Reference:

QUESTION 358

During PPP link setup, which of the following phases can be directly converted from the Dead phase?

- A. Terminate
- B. Authenticate
- C. Establish
- D. Network

Correct Answer: A

Section: (none)

Explanation

Explanation/Reference:

QUESTION 359

As shown in the following figure, which position should the AH header in IPsec transmission mode be inserted into?



- A. 2
- B. 3
- C. 4
- D. 1

Correct Answer: A

Section: (none)

Explanation

Explanation/Reference:

QUESTION 360

Which of the following ACLs can match the transport layer port number?

- A. Basic ACL
- B. Intermediate ACL
- C. Layer 2 ACL
- D. Advanced ACL

Correct Answer: D

Section: (none)

Explanation

Explanation/Reference:

QUESTION 361

SNMP packets are transmitted by UDP.

- A. True
- B. False

Correct Answer: A

Section: (none)

Explanation

Explanation/Reference:

QUESTION 362

As shown in the following figure, which of the following is the authentication scope of the AH protocol in IPsec tunnel mode?



- A. 2
- B. 3
- C. 1
- D. 4

Correct Answer: D

Section: (none)

Explanation

Explanation/Reference:

QUESTION 363

Which of the following IPv6 addresses is a multicast address?

- A. FF02::2E0:FCFF:FEEF:FEC
- B. 2000::2E0:FCFF:FEEF:FEC
- C. FE80::2E0:FCFF:FEEF:FEC
- D. FC00::2E0:FCFF:FEEF:FEC

Correct Answer: A

Section: (none)

Explanation

Explanation/Reference:

QUESTION 364

On a broadcast network with four routers, all the routers run OSPFv3, and the DR priorities of all the routers are not 0. How many adjacencies are there on the network?

- A. 4
- B. 6
- C. 5
- D. 3

Correct Answer: A

Section: (none)

Explanation

Explanation/Reference:

QUESTION 365

In the DHCPv6 stateless autoconfiguration solution, hosts do not need to send any DHCPv6 packets.

- A. True
- B. False

Correct Answer: A

Section: (none)

Explanation

Explanation/Reference:

QUESTION 366

How many DUIDs can each DHCPv6 server have?

- A. 1
- B. 4
- C. 2
- D. 3

Correct Answer: A

Section: (none)

Explanation

Explanation/Reference:

QUESTION 367

IPv6 can also be called:

- A. RIPng
- B. IP+
- C. IPng
- D. NextIP

Correct Answer: C

Section: (none)

Explanation

Explanation/Reference:

QUESTION 368

Which of the following packets is sent by a DHCPv6 client before it sends a request packet to the DHCPv6 server?

- A. RA
- B. RS
- C. NA

D. NS

Correct Answer: D

Section: (none)

Explanation

Explanation/Reference:

QUESTION 369

Which of the following fields are included in an MPLS header? (Choose three.)

- A. Label
- B. TTL
- C. EXP
- D. Tos

Correct Answer: ABC

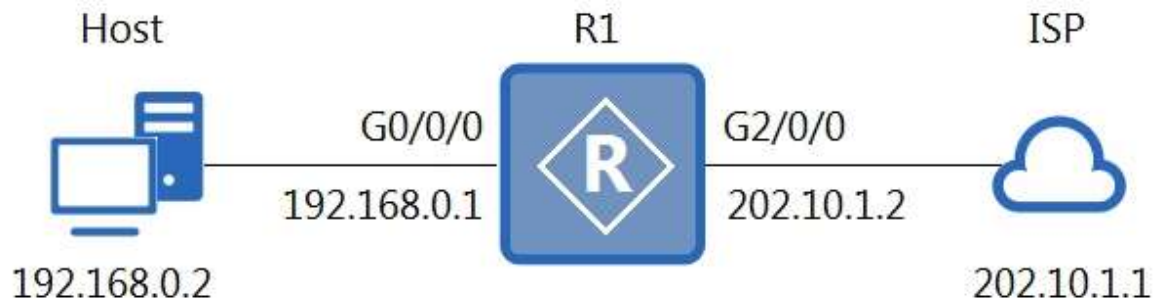
Section: (none)

Explanation

Explanation/Reference:

QUESTION 370

Refer to the graphic, the static NAT command is executed on R1. When a PC connected to R1 accesses the Internet, the destination address in the packets does not change.



```
[R1]interface GigabitEthernet1/0/0
[R1-GigabitEthernet1/0/0]ip address 192.168.0.1 255.255.255.0
#
[R1]interface GigabitEthernet2/0/0
[R1-GigabitEthernet2/0/0]ip address 202.10.1.2 255.255.255.0
[R1]nat static global 202.10.1.3 inside 192.168.0.2 netmask 255.255.255.255
[R1]ip route-static 0.0.0.0 0.0.0.0 202.10.1.1
```

- A. True
- B. False

Correct Answer: A

Section: (none)

Explanation

Explanation/Reference:

QUESTION 371

For DHCP, the priority of an interface address pool is higher than that of a global address pool.

- A. True
- B. False

Correct Answer: A

Section: (none)

Explanation

Explanation/Reference:

QUESTION 372

When the host accesses web service of the server, the value of the "Protocol" field at the network layer is 6.

- A. True
- B. False

Correct Answer: A

Section: (none)

Explanation

Explanation/Reference:

QUESTION 373

Before forwarding IPv6 packets, routers do not need to re-encapsulate the data link layer.

- A. True
- B. False

Correct Answer: B

Section: (none)

Explanation

Explanation/Reference:

QUESTION 374

In the VRP system, you cannot delete files by running the delete or unreserved vrpcfg.zip command. You must clear files in the recycle bin.

- A. True
- B. False

Correct Answer: B

Section: (none)

Explanation

Explanation/Reference:

QUESTION 375

DHCP Request packets must be sent in broadcast mode.

- A. True
- B. False

Correct Answer: B

Section: (none)

Explanation

Explanation/Reference:

QUESTION 376

::1/128 is an IPv6 loopback address.

- A. True
- B. False

Correct Answer: A

Section: (none)

Explanation

Explanation/Reference:

QUESTION 377

What is the TPID value defined by IEEE 802.1Q?

- A. 0x8100
- B. 0x8200
- C. 0x9100
- D. 0x7200

Correct Answer: A

Section: (none)

Explanation

Explanation/Reference:

QUESTION 378

What is the neighbor state when an OSPFv3 adjacency is established?

- A. Down
- B. 2-way
- C. Full
- D. Loading

Correct Answer: B

Section: (none)

Explanation

Explanation/Reference:

QUESTION 379

Which of the following values of the Length/Type field in an Ethernet data frame indicates the PPPoE discovery stage?

- A. 0x8863
- B. 0x8864
- C. 0x0806
- D. 0x0800

Correct Answer: A

Section: (none)

Explanation

Explanation/Reference:

QUESTION 380

Which of the following OSPF states can be used to indicate that an adjacency relationship has been established?

- A. Down
- B. 2-way
- C. Full
- D. Attempt

Correct Answer: C

Section: (none)

Explanation

Explanation/Reference:

QUESTION 381

Which of the following fields is not included in the OSPF Hello packet?

- A. Hello Interval
- B. Neighbor
- C. Network Mask
- D. Sysname

Correct Answer: D

Section: (none)

Explanation

Explanation/Reference:

QUESTION 382

What is the value of the Type field in RSTP configuration BPDUs?

- A. 0x00
- B. 0x01
- C. 0x02
- D. 0x03

Correct Answer: A

Section: (none)

Explanation

Explanation/Reference:

QUESTION 383

If the configuration information of a router is as follows, which user name and password are used by the peer router to perform PPP link authentication?

```
aaa
local-user test password cipher test
local-user test service-type ppp
local-user test1 password cipher test1
local-user test1 service-type telnet
local-user test2 password cipher test2
#
interface Serial1/0/0
link-protocol ppp
ppp authentication-mode pap
ip address 10.0.12.1 255.255.255.0
#
```

- A. User name: test
Password: test
- B. User name: test1
Password: test1
- C. User name: test2
Password: test2
- D. User name: test2
Password: test

Correct Answer: A

Section: (none)

Explanation

Explanation/Reference:

QUESTION 384

Users in the network discovered that the efficiency of a file transfer is low. The administrator used Wireshark to observe the network and discovered many duplicate frames.

Which statement correctly explains the reason for this?

- A. The switch doesn't know the destination and has flooded frames.
- B. This network needs upgrading to use newer and more efficient switches.
- C. The network has loops at the link layer.
- D. The network has not been segmented using VLANs.

Correct Answer: C

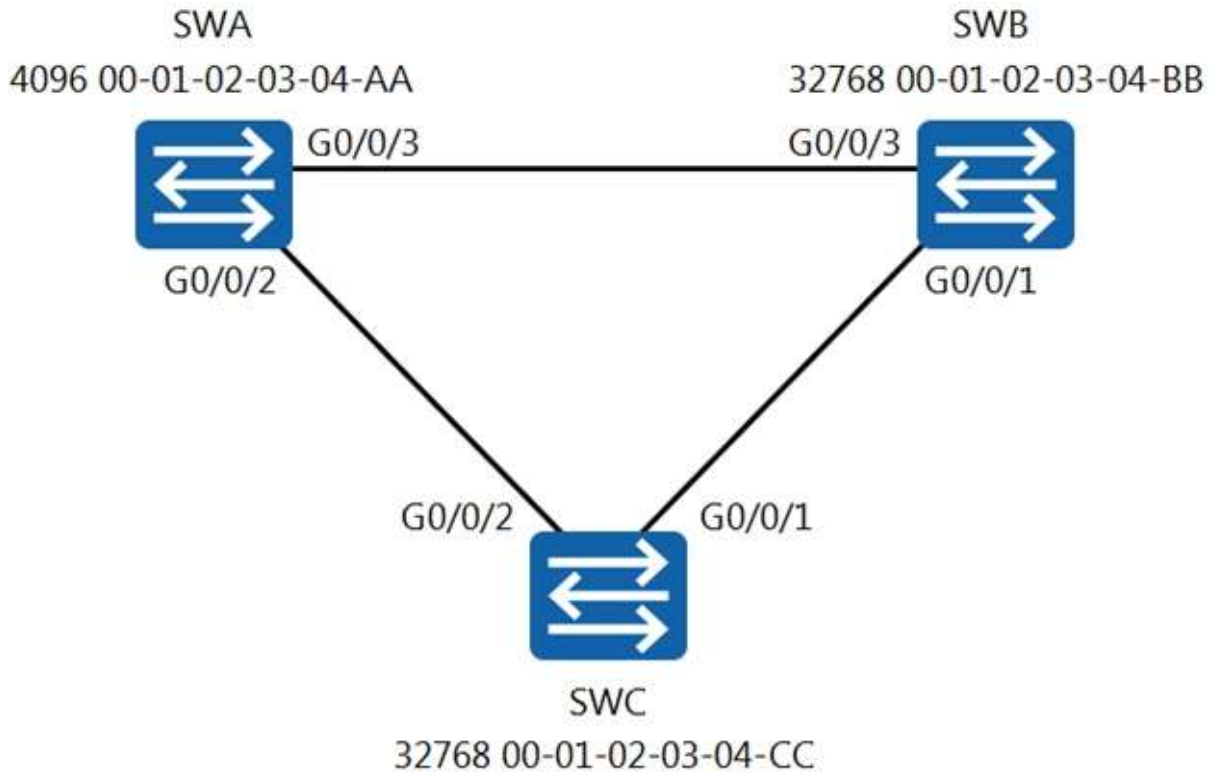
Section: (none)

Explanation

Explanation/Reference:

QUESTION 385

As shown in the figure, which of the following ports will become the designated port?



- A. G0/0/3 of SWB
- B. G0/0/1 of SWC
- C. G0/0/2 of SWC
- D. G0/0/1 of SWB

Correct Answer: D

Section: (none)

Explanation

Explanation/Reference:

QUESTION 386

Which of the following commands can be used to change the device name to huawei?

- A. sysname huawei
- B. hostname huawei
- C. rename huawei
- D. do name huawei

Correct Answer: A

Section: (none)

Explanation

Explanation/Reference:

QUESTION 387

Which of the following OSPF packets can be used to send LSAs to the peer router?

- A. LSR
- B. LSA
- C. LSU
- D. LSACK

Correct Answer: C

Section: (none)

Explanation

Explanation/Reference:

QUESTION 388

If the output information of a router is as follows, which of the following tunnel protocols is used by the interface?

```
[Router A]display interface Tunnel 0/0/0
Tunnel0/0/0 current state : UP
Line protocol current state : UP
Last line protocol up time : 2019-03-06 11:03:15 UTC-08:00
Description:HUAWEI, AR Series, Tunnel0/0/0 Interface
Route Port,The Maximum Transmit Unit is 1500
Internet Address is unnumbered, using address of LoopBack0(10.0.1.1/32)
Encapsulation is TUNNEL, loopback not set
Tunnel source 10.0.12.1 (GigabitEthernet0/0/0), destination 10.0.12.2
Tunnel protocol/transport GRE/IP, key disabled
```

- A. GRE
- B. IPsec
- C. LDP
- D. MPLS

Correct Answer: A

Section: (none)

Explanation

Explanation/Reference:

QUESTION 389

Which layer of the OSI reference model does the PPP protocol define?

- A. Presentation layer
- B. Data link layer
- C. Network layer
- D. Application layer

Correct Answer: B

Section: (none)

Explanation

Explanation/Reference:

QUESTION 390

What is the UDP port number used by the DHCPv6 server?

- A. 546
- B. 547
- C. 548
- D. 549

Correct Answer: B

Section: (none)

Explanation

Explanation/Reference:

QUESTION 391

Which of the following addresses is the solicited-node multicast address corresponding to the IPv6 address 2019::8:AB?

- A. FF02::1:FF08:AB
- B. FF02::1:FF20:19
- C. FF02::FF08:AB
- D. FF02::1:FE08:AB

Correct Answer: A

Section: (none)

Explanation

Explanation/Reference:

QUESTION 392

Which of the following statements is false about OSPF area partition?

- A. The link state databases (LSDBs) of routers are the same in the same OSPF area.
- B. OSPF area partition can reduce the LSDB size of the router.
- C. Area 0 is the backbone area, and other areas must be connected to this area.
- D. Only area border routers (ABRs) can function as the autonomous system boundary routers (ASBRs).

Correct Answer: B

Section: (none)

Explanation

Explanation/Reference:

QUESTION 393

Which type of DHCP packets does a DHCP client send when it wants to leave a network?

- A. DHCP Discover packet
- B. DHCP Release packet
- C. DHCP Request packet
- D. DHCP ACK packet

Correct Answer: B

Section: (none)

Explanation

Explanation/Reference:

QUESTION 394

Which of the following OSPF packets can be sent to request the local lacking LSAs?

- A. HELLO
- B. LSU
- C. LSR
- D. LSACK

Correct Answer: C

Section: (none)

Explanation

Explanation/Reference:

QUESTION 395

When the header length of an IPv4 data packet is 20B and the total packet length is 1500B, what is the valid payload of the packet?

- A. 1500B
- B. 1480B
- C. 1520B
- D. 20B

Correct Answer: B

Section: (none)

Explanation

Explanation/Reference:

QUESTION 396

What is the destination address of DHCPv6 request packets?

- A. FF02::1:2
- B. FF02::1
- C. FF02::2
- D. FF01::1:2

Correct Answer: A

Section: (none)

Explanation

Explanation/Reference:

QUESTION 397

What is the number range of a basic ACL?

- A. 2000-2999

- B. 3000-3999
- C. 4000-4999
- D. 6000-6031

Correct Answer: A
Section: (none)
Explanation

Explanation/Reference:

QUESTION 398

MPLS dual-label stacking packets are _____ bytes longer than original IP packets.

- A. 4
- B. 8
- C. 16
- D. 32

Correct Answer: B
Section: (none)
Explanation

Explanation/Reference:

QUESTION 399

Which of the following values if the Flag field of an IPv6 multicast address indicates that the multicast address is a permanent multicast address?

- A. 0
- B. 1
- C. 2
- D. 3

Correct Answer: A
Section: (none)
Explanation

Explanation/Reference:

QUESTION 400

According to the following DHCPv6 address pool configuration of a router, which of the following DNS server addresses can the host that uses DHCPv6 stateful autoconfiguration obtain?

```
#  
dhcpv6 pool test  
address prefix 3000::/64  
excluded-address 3000::1  
dns-server 2000::1  
dns-domain-name huawei  
dns-domain-name huawei.com  
#
```

- A. 3000::1/64

- B. 2000::1/64
- C. 3000::2/64
- D. 3000::3000/64

Correct Answer: B
Section: (none)
Explanation

Explanation/Reference:

QUESTION 401

If the IPv4 address of a host on a local area network (LAN) is 192.168.1.1/30, which of the following destination IPv4 addresses can be carried in data packets that the host can decapsulate?

- A. 192.168.1.1
- B. 192.168.1.2
- C. 192.168.1.3
- D. 255.255.255.255

Correct Answer: B
Section: (none)
Explanation

Explanation/Reference:

QUESTION 402

Which of the following statements are true about the blackhole MAC address table?

- A. Entries are manually configured and delivered to each interface card. The entries cannot be aged out.
- B. After a device is reset, an interface card is hot swapped, or an interface card is reset, the saved entries on the device or interface card are not lost.
- C. After a blackhole MAC address is configured on a device, the device discards packets whose source or destination MAC address is the blackhole MAC address.
- D. Blackhole MAC address entries can be used to filter out unauthorized users.

Correct Answer: C
Section: (none)
Explanation

Explanation/Reference:

QUESTION 403

Which of the following fields exist in both IPv6 and IPv4 packet headers?

- A. Source Address
- B. Destination Address
- C. Version
- D. Next Header

Correct Answer: ABC
Section: (none)
Explanation

Explanation/Reference:

QUESTION 404

Which of the following is/are the characteristic(s) of HDLC?

- A. HDLC supports point-to-point links.
- B. HDLC does not support IP address negotiation.
- C. HDLC does not support authentication.
- D. HDLC supports point-to-multipoint links.

Correct Answer: ABC

Section: (none)

Explanation

Explanation/Reference:

QUESTION 405

Which of the following types of routes can be used by a router to establish a routing table?

- A. Direct route
- B. Dynamic route
- C. Static route
- D. Aggregated route

Correct Answer: AC

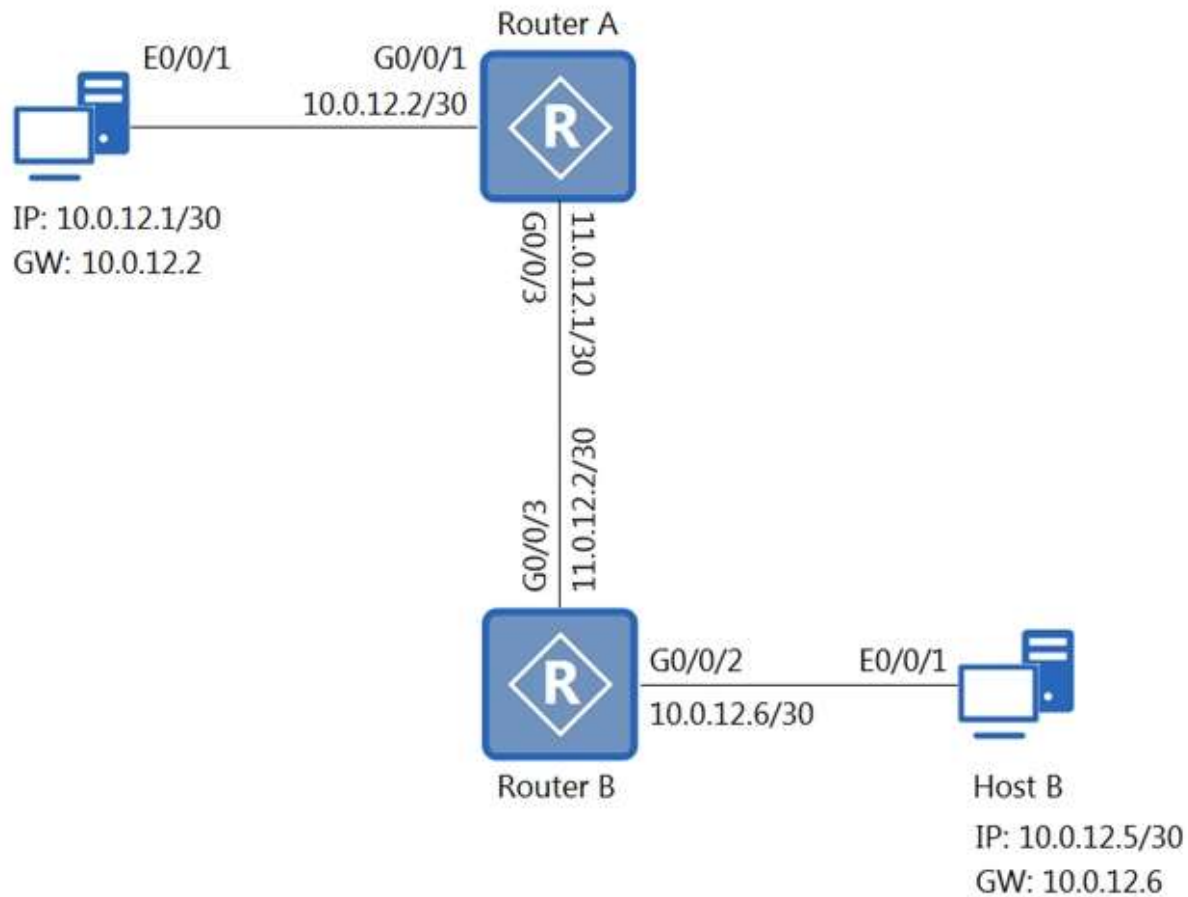
Section: (none)

Explanation

Explanation/Reference:

QUESTION 406

On the network shown in the figure, which of the following commands can be used to enable host A to successfully ping host B?



- A. Router A : ip route-static 10.0.12.5 255.255.255.252 11.0.12.2
Router B : ip route-static 10.0.12.1 255.255.255.252 11.0.12.1
- B. Router A : ip route-static 0.0.0.0 0.0.0.0 11.0.12.2
Router B : ip route-static 0.0.0.0 0.0.0.0 11.0.12.1
- C. Router A : ip route-static 0.0.0.0 0.0.0.0 11.0.12.1
Router B : ip route-static 0.0.0.0 0.0.0.0 11.0.12.2
- D. Router A : ip route-static 10.0.12.5 255.255.255.252 11.0.12.1
Router B : ip route-static 10.0.12.1 255.255.255.252 11.0.12.2

Correct Answer: AB

Section: (none)

Explanation

Explanation/Reference:

QUESTION 407

Which of the following packets are OSPF packets?

- A. HELLO
- B. LSU
- C. LSR
- D. LSA

Correct Answer: ABC

Section: (none)

Explanation

Explanation/Reference:

QUESTION 408

Which of the following port status may exist on an STP-enabled switch?

- A. Forwarding
- B. Listening
- C. Discarding
- D. Disabled

Correct Answer: AB

Section: (none)

Explanation

Explanation/Reference:

QUESTION 409

One of the reasons that segment routing (SR) is introduced is that traditional LDP has some restrictions.

Which of the following statements about LDP restrictions are true?

- A. LDP does not support automatic label allocation.
- B. LDP supports path computation only based on IGP SPF (minimum cost), not based on traffic engineering.
- C. LDP path computation depends on an IGP. If the IGP and LDP are not synchronized, black holes are generated, affecting services.
- D. LDP has 11 types of protocol packets, which greatly increases link bandwidth consumption and device CPU usage.

Correct Answer: CD

Section: (none)

Explanation

Explanation/Reference:

QUESTION 410

The following shows the command output on a router.

Which of the following statements are true?

```
display startup
MainBoard:
Startup system software: flash:/AR2220E-V200R007C00SPC600.cc
Next startup system software: flash:/AR2220E-V200R007C00SPC600.cc
Backup system software for next startup: null
Startup saved-configuration file: flash:/vrpcfg.zip
Next startup saved-configuration file: flash:/backup.zip
Startup license file: null
Next startup license file: null
Startup patch package: null
Next startup patch package: null
Startup voice-files: null
```

Next startup voice-files: null

- A. The current VRF version file is the same as the VRF file for next startup.
- B. The current VRF version file is different from the VRF file for next startup.
- C. The current configuration file is the same as the configuration file for next startup.
- D. The current configuration file is different from the configuration file for next startup.

Correct Answer: CD

Section: (none)

Explanation

Explanation/Reference:

QUESTION 411

Which of the following statements about Ethernet sub-interfaces is/are true?

- A. The sub-interface ID must be the same as the VLAN ID.
- B. A sub-interface can be bound to multiple VLANs.
- C. The sub-interface cannot be configured with an IP address.
- D. The IP addresses for sub-interfaces must not be on the same network segment.

Correct Answer: C

Section: (none)

Explanation

Explanation/Reference:

QUESTION 412

Which of the following statements are true about the static MAC address table?

- A. After a device is reset, an interface card is hot swapped, or an interface card is reset, the saved entries on the device or interface card are not lost.
- B. After an interface is statically bound to a MAC address, other interfaces discarded a packet whose source MAC address is the bound MAC address.
- C. Each static MAC address entry can be bound only to one outbound interface.
- D. You can check whether data is forwarded between two connected devices by checking the static MAC address entries.

Correct Answer: AB

Section: (none)

Explanation

Explanation/Reference:

QUESTION 413

On a network running Rapid Spanning Tree Protocol (RSTP), which of the following ports are in Discarding state when the topology is stable?

- A. Root port
- B. Designated port
- C. Alternate port
- D. Backup port

Correct Answer: CD
Section: (none)
Explanation

Explanation/Reference: