

LINUX FOR BEGINNERS



JASON CANNON

Linux for Beginners

Jason Cannon

Linux for Beginners

1. [Your Free Gift](#)
2. [Introduction](#)
3. [First Things First: Getting Access](#)
 1. [Web Based Command Line Access](#)
 2. [Web Hosting Shell Accounts](#)
 3. [Using Preinstalled Linux Images with VirtualBox](#)
 4. [Deep Dive](#)
4. [Getting Connected](#)
 1. [Choosing an SSH Client](#)
 2. [Connecting via SSH with a Password from Windows](#)
 3. [Connecting via SSH with a Password from Mac](#)
 4. [General Information on Connecting via SSH with Keys](#)
 5. [Importing SSH Keys on Windows](#)
 6. [Generating SSH Keys on Windows](#)
 7. [Generating SSH Keys on Mac](#)
 8. [Connecting via SSH with Keys from Mac](#)
 9. [Connecting via Telnet](#)
 10. [Connecting Directly](#)
 11. [Deep Dive](#)
5. [Welcome to Shell](#)
 1. [Deep Dive](#)
6. [Linux Directory Structure](#)
 1. [Common Directories](#)
 2. [Comprehensive Directory Listing](#)
 3. [Unix Specific Directories](#)
 4. [Application Directory Structures](#)
 5. [Example Top Level Directory Listings](#)
 6. [Deep Dive](#)
7. [Basic Linux Commands](#)
8. [Teach Yourself to Fish](#)
 1. [Deep Dive](#)
9. [Working with Directories](#)
 1. [Creating and Removing Directories](#)
10. [Your Free Gift](#)
11. [Listing Files and Understanding ls Output](#)
 1. [Listing All Files, Including Hidden Files](#)

2. [Listing Files by Type](#)
3. [Listing Files by Time and in Reverse Order](#)
4. [Listing Files Recursively](#)
5. [List Directories, Not Contents](#)
6. [Listing Files with Color](#)
7. [Commonly Used ls Options](#)
8. [Working with Spaces in Names](#)
9. [Deep Dive](#)
12. [File and Directory Permissions Explained](#)
 1. [Secret Decoder Ring for Permissions](#)
 2. [Changing Permissions](#)
 3. [Numeric Based Permissions](#)
 4. [Commonly Used Permissions](#)
 5. [Working with Groups](#)
 6. [Directory Permissions Revisited](#)
 7. [Default Permissions and the File Creation Mask](#)
 8. [Special Modes](#)
 9. [umask Examples](#)
 10. [Free Training Videos on Linux Permissions](#)
 11. [Deep Dive](#)
13. [Finding Files](#)
 1. [Locate - A fast find](#)
 2. [Deep Dive](#)
14. [Viewing and Editing Files](#)
 1. [Viewing Files In Real Time](#)
 2. [Editing Files](#)
 3. [Specifying a Default Editor](#)
 4. [Deep Dive](#)
15. [Comparing Files](#)
16. [Determining a File's Type](#)
17. [Searching in Files](#)
 1. [Searching for Text in ASCII Files](#)
 2. [Searching For Text in Binary Files](#)
 3. [Pipes](#)
18. [Deleting, Copying, Moving, and Renaming Files](#)
 1. [Removing Files](#)
 2. [Copying Files](#)
 3. [Moving and Renaming Files](#)
19. [Sorting Data](#)
20. [Creating a Collection of Files](#)

21. [Compressing Files To Save Space](#)
22. [Compressing Archives](#)
23. [Redirection](#)
 1. [Standard Error](#)
 2. [Null Device](#)
 3. [Deep Dive](#)
24. [Transferring and Copying Files](#)
 1. [Deep dive](#)
25. [Welcome Back to Shell](#)
 1. [Customizing the Prompt](#)
 2. [Creating Aliases](#)
 3. [Interactive vs Non-interactive Sessions](#)
 4. [Comments](#)
 5. [Shell History](#)
 6. [Tab Completion](#)
 7. [Shell Command Line Editing](#)
 8. [Dealing with Long Shell Commands](#)
 9. [Environment Variables](#)
 10. [Removing Variables from the Environment](#)
 11. [Deep Dive](#)
26. [Processes and Job Control](#)
 1. [Listing Processes and Displaying Information](#)
 2. [Running Processes in the Foreground and Background](#)
 3. [Killing Processes](#)
 4. [Deep Dive](#)
27. [Scheduling Repeated Jobs with Cron](#)
 1. [Crontab Format](#)
 2. [Using the Crontab Command](#)
 3. [Deep Dive](#)
28. [Switching Users and Running Commands as Others](#)
 1. [su](#)
 2. [Sudo - Super User Do](#)
 3. [Using Sudo](#)
 4. [Deep Dive](#)
29. [Installing Software](#)
 1. [Installing Software on CentOS, Fedora, and RedHat Distributions](#)
 2. [Installing Software on Debian and Ubuntu](#)
 3. [Free Video on Installing Linux Software](#)
 4. [Deep Dive](#)
30. [The End and the Beginning](#)

31. [About the Author](#)
 1. [Other Books by the Author](#)
32. [Additional Resources Including Exclusive Discounts for Linux for Beginners Readers](#)
 1. [Books](#)
 2. [Courses](#)
 3. [Cloud Hosting and VPS \(Virtual Private Servers\)](#)
 4. [Web Hosting with SSH and Shell Access](#)
33. [Appendices](#)
 1. [Appendix A: Abbreviations and Acronyms](#)
 2. [Appendix B: FAQ](#)
 3. [Appendix C: Trademarks](#)

Your Free Gift

As a thank you for reading *Linux for Beginners*, I would like to give you a copy of [*Linux Alternatives to Windows Applications*](#). In it, you will be introduced to over 50 of the most popular applications available for Linux today. These applications will allow you to browse the web, watch movies, listen to music, connect to your favorite social networks, create presentations, and more. This gift is a perfect complement to this book and will help you along your Linux journey. Visit <http://www.linuxtrainingacademy.com/linux-apps/> or [click here to download your free gift](#).

Introduction

Knowing where to start when learning a new skill can be a challenge, especially when the topic seems so vast. There can be so much information available that you can't even decide where to start. Or worse, you start down the path of learning and quickly discover too many concepts, commands, and nuances that aren't explained. This kind of experience is frustrating and leaves you with more questions than answers.

Linux for Beginners doesn't make any assumptions about your background or knowledge of Linux. You need no prior knowledge to benefit from this book. You will be guided step by step using a logical and systematic approach. As new concepts, commands, or jargon are encountered they are explained in plain language, making it easy for anyone to understand.

Let's get started.

First Things First: Getting Access

In order to start learning your way around and putting your newfound knowledge to the test, you're going to need access to a Linux system. If you already have an account on a Linux system, you can skip ahead to the [next chapter](#).

Web Based Command Line Access

The absolute quickest way to get access to a working Linux account is to visit SimpleShell.com in your web browser and click "Start my session." A terminal emulator that is connected to a Linux server will be displayed. You will be automatically logged in using a generic account and presented with a shell prompt.

Since you do not have a personal account your shell history and any files that you create will be destroyed at the end of your session. SimpleShell is great for trying out a few commands or working for a short period of time since sessions are limited to 15 minutes each. You can easily start another session at the end of your 15 minutes, but just be aware that you will lose any work from the previous session. If for some reason SimpleShell is not available there are alternatives such as <http://www.webminal.org> and <http://linuxzoo.net>.

Web Hosting Shell Accounts

If you use a web hosting service to host your website you may already have a Linux account that you can use. Consult your hosting company's documentation and search for "SSH" or "shell access." SSH stands for Secure Shell and it provides a way to connect to a server over a network, like the Internet. If you don't already have a web hosting provider, you can sign up for one and use it for shell access. Shared web hosting providers typically charge just a few dollars a month.

Here are some shared web hosting companies that can provide you with a shell account and SSH access.

- 1and1.com
- BlueHost.com
- DreamHost.com
- HostGator.com
- Site5.com

Using Preinstalled Linux Images with VirtualBox

[VirtualBox](#) is virtualization software that can be installed on Windows, Mac, Solaris, or Linux. It allows you to run an operating system (guest) inside your current operating system (host). It's more time consuming than the other options, but it can be worth the extra effort to have your own personal Linux system. In this scenario you will spend a few minutes installing the virtualization software, downloading a pre-installed Linux image, and importing that image.

To get started, head over to the [VirtualBox download page](#) and grab the installer for your current operating system. Click through the install screens and accept the defaults.

Next, download a virtual disk image (VDI) from <http://virtualboxes.org/> to use. I recommend that you download a [CentOS](#) or [Ubuntu](#) image unless you already know which Linux distribution you will be working with in the future. Honestly, you can't make a wrong decision. The concepts that you will be learning in this book apply to any Linux distribution.

- [CentOS Virtual Disk Images](#)
- [Ubuntu Virtual Disk Images](#)

Launch VirtualBox, create a new virtual machine, and use the virtual disk image that you just downloaded. When you are asked for a hard disk image select the "Use existing hard disk" radio button and click on the directory icon. Next, click "Add" and select the virtual disk image. When the virtual machine is powered on you can log into the server using the username and password provided with the downloaded image.

Deep Dive

- [4 Quick and Easy Ways to Get Access to a Shell Account and Start Learning Linux Today](#) - This article covers more options and goes into greater detail.
- [Create, Build, Test Drive, or Deploy Your Very Own Linux Server with Full Root Access](#) - An article with even more strategies for getting access to Linux servers.
- [How to Install VirtualBox on Mac](#) - A video that guides you through the installation of VirtualBox on Mac.
- [How to Install VirtualBox on Windows](#) - A video that guides you through the installation of VirtualBox on Windows.
- [VirtualBox Documentation](#) - Official VirtualBox documentation.
- [VirtualBox download page](#) - Where to obtain a copy of the VirtualBox software.
- [VirtualBoxes.org](#) - A good source of virtual disk images.

Getting Connected

When your account is created you will be provided with details on how to connect to the Linux server. You may be provided with some or all of the following information:

- Username. This is also known as an account, login, or ID.
- Password
- SSH key
- Server name or IP address
- Port number
- Connection protocol

The connection protocol will either be SSH (Secure Shell) or telnet. SSH and telnet provide ways to connect to a server over the Internet or a local area network. In the vast majority of cases the connection protocol will be SSH. Telnet is practically obsolete at this point, however you may run into it if you need to access a legacy system.

Choosing an SSH Client

If you were given a specific SSH client to use, use that program and follow the documentation for that product. If you are free to choose your own client or were not provided one, I suggest using PuTTY for Windows or Terminal for Mac.

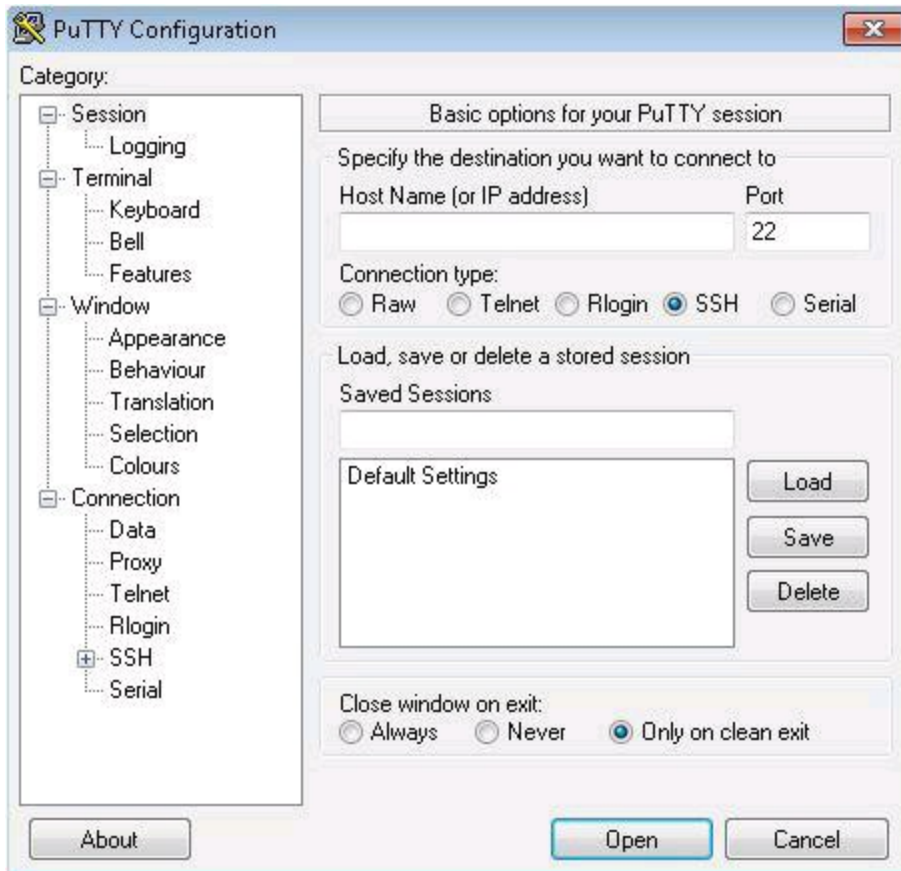
PuTTY can be downloaded from this website: <http://www.LinuxTrainingAcademy.com/putty/>. You only need putty.exe to get started. Here's the direct link to [putty.exe](http://the.earth.li/~sgtatham/putty/latest/x86/putty.exe): <http://the.earth.li/~sgtatham/putty/latest/x86/putty.exe>.

The Terminal application comes pre-installed on Macs and is located in the `/Applications/Utilities` folder.

A list of other SSH clients is provided in the [Deep Dive section](#) at the end of this chapter.

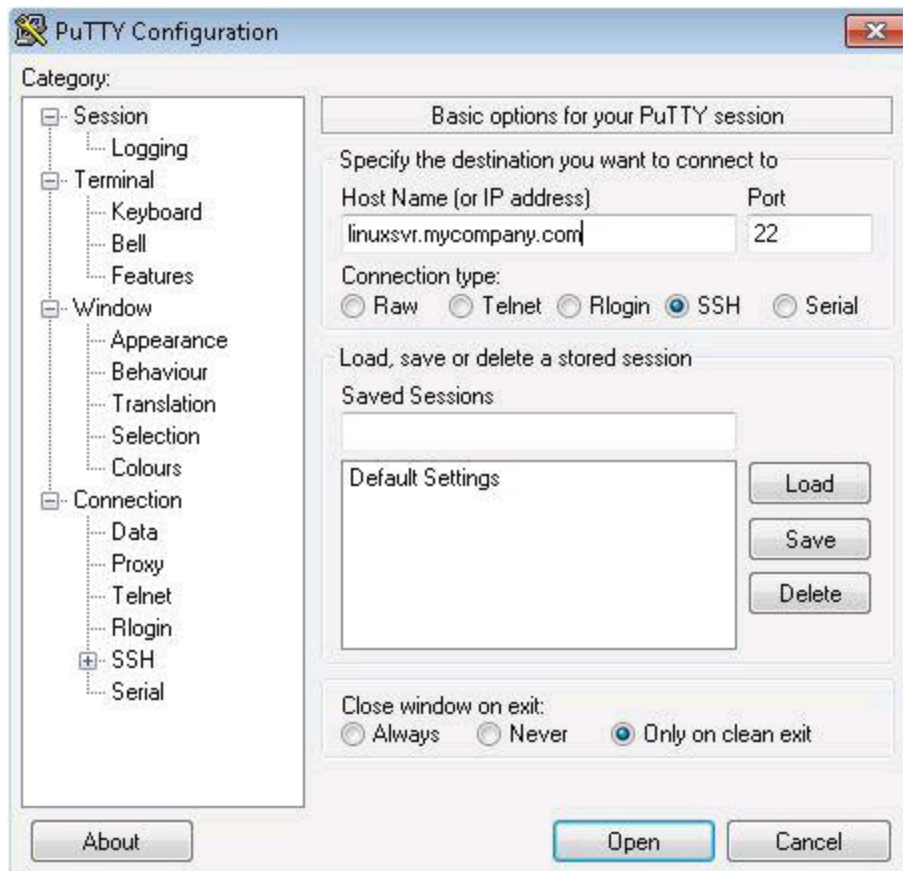
Connecting via SSH with a Password from Windows

To connect to the Linux server using the SSH connection protocol, launch PuTTY.



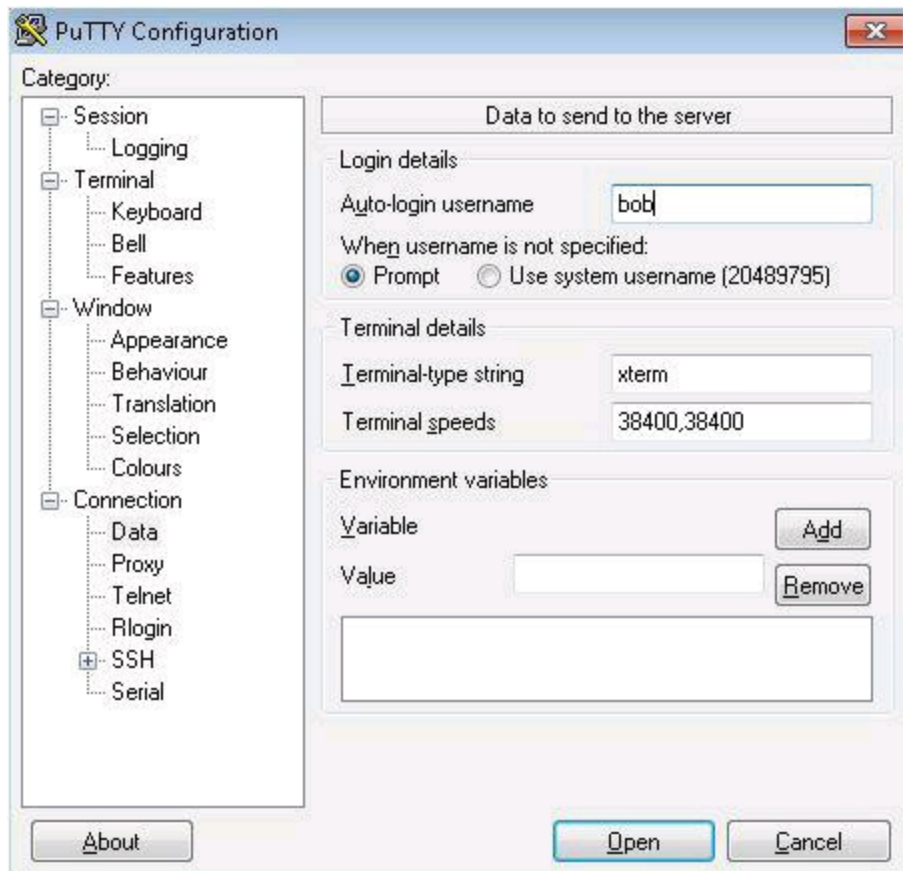
PuTTY

Type the host name or IP address you were given into the Host Name (or IP address) box. If no port was given to you, leave it at the default value of 22.



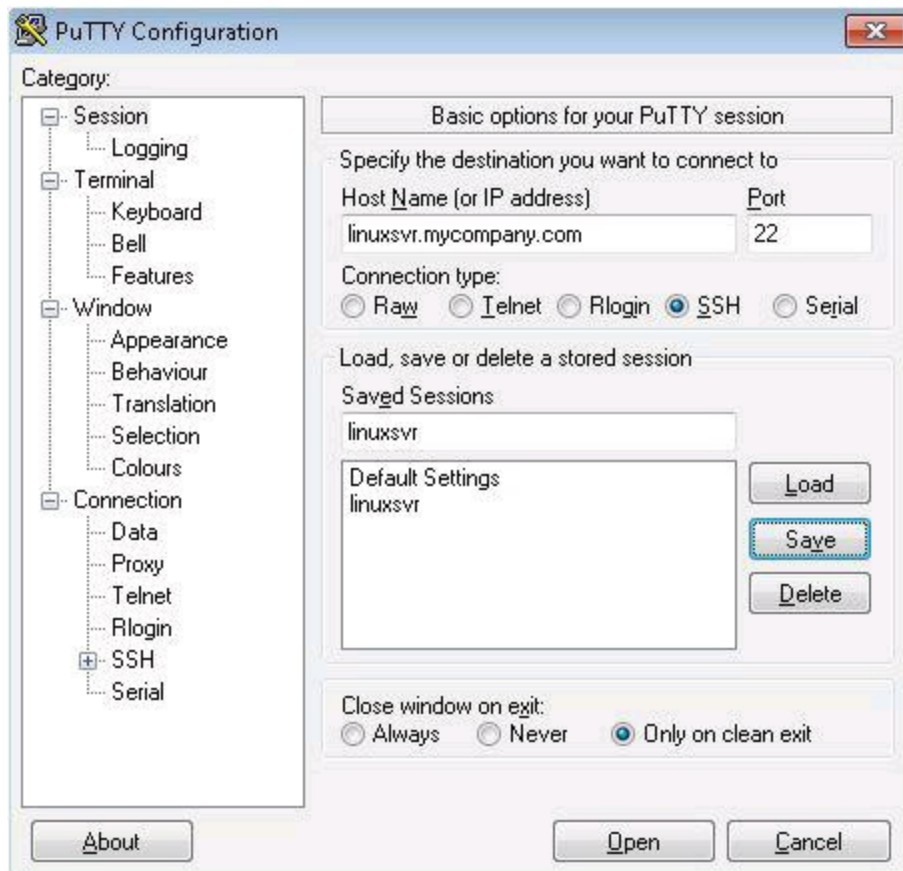
PuTTY

Enter your username by clicking on `Data` in the left pane. It is located directly below `Connection`. Type your username into the `Auto-login username` field. If you skip this step you will be prompted for your username when you connect to the server.



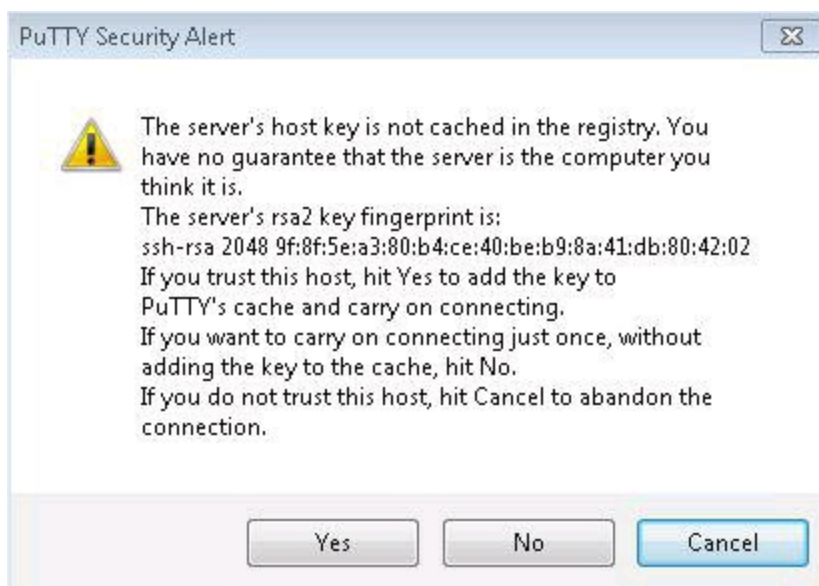
PuTTY

Save your session by typing in a name in the `Saved Sessions` box and clicking `Save`. This allows you to speed up this process by simply double clicking on your saved session to connect to the Linux server.



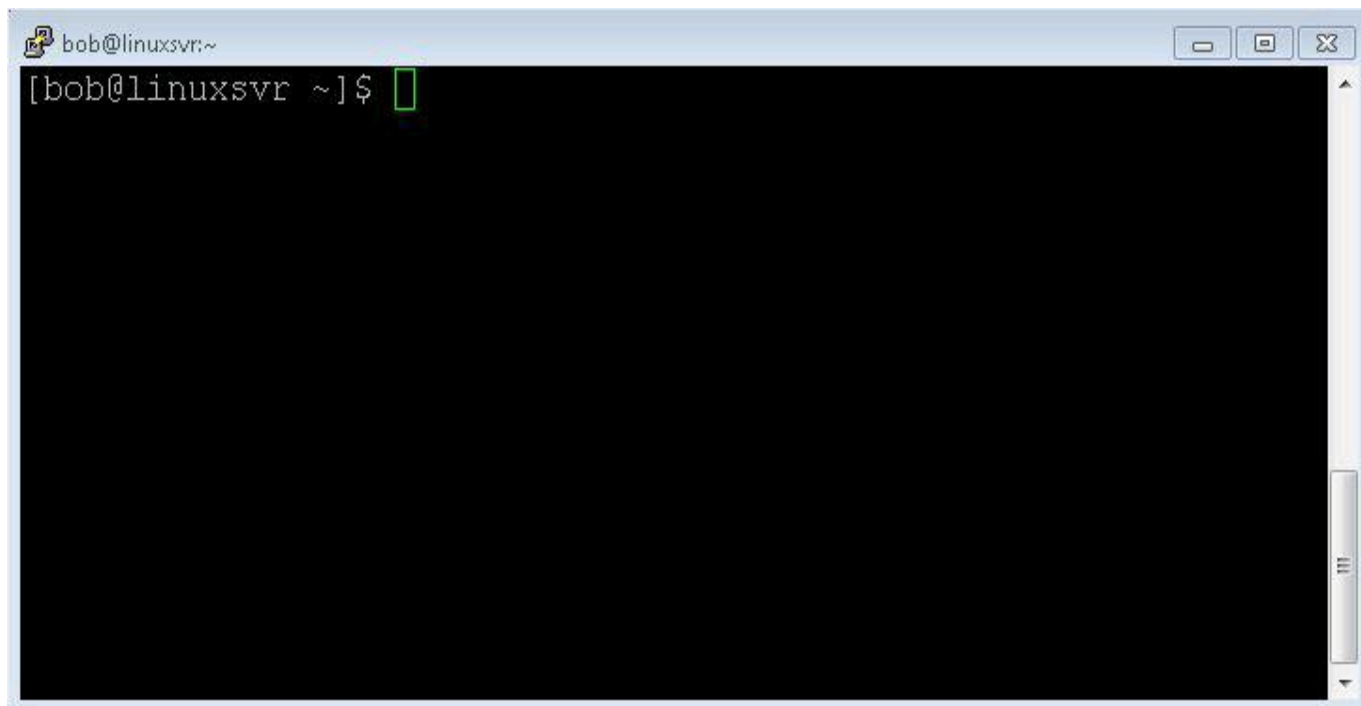
PuTTY

When you click `Open` a connection attempt will be made. The first time you connect to a particular server, PuTTY will ask to cache that server's host key. You will not be prompted again on subsequent connections. To add the server's SSH host key to PuTTY's cache, simply click `Yes` when prompted.



PuTTY

Once you are successfully logged in, you will see something similar to this:



PuTTY

Connecting via SSH with a Password from Mac

The built-in SSH client on Mac is a command line program. Command line programs can be run with the `Terminal` application that comes with the Mac operating system. It is located in the `/Applications/Utilities` folder. The format of the `ssh` command is `ssh -p port_number username@servername`. If you were not provided a port number, then the default port of 22 is assumed and you can omit `-p 22` from the `ssh` command. Similarly, the username only needs to be specified if it is different on the server than it is on your Mac workstation. For example, if your username on your Mac is `bob` and your username on `linuxsvr` is also `bob`, you can omit `bob@` and simply type `ssh linuxsvr`. Once `Terminal` is running, type in the `ssh` command. Commands are case-sensitive and the `ssh` command is lowercase. It should look like one of these three options:

```
ssh linuxsvr
ssh bob@linuxsvr
ssh -p 2222 bob@linuxsvr
```

The first time you connect to a particular server you will be asked to verify that server's host key. You will not be prompted again on subsequent connections. When you are asked `Are you sure you want to continue connecting (yes/no)?` type `yes` and press `Enter`. Once you have established a connection, you will be prompted for your password.

A screenshot of a Mac Terminal window. The title bar shows 'bob — bob@centos:~ — ssh — 80x24'. The terminal content shows the following sequence of commands and output:

```
air:~ bob$ ssh bob@linuxsvr
The authenticity of host 'linuxsvr (10.0.0.7)' can't be established.
RSA key fingerprint is cc:d8:f0:cf:c2:34:1a:69:80:7e:ad:c2:23:df:b9:4f.
Are you sure you want to continue connecting (yes/no)? yes
Warning: Permanently added 'linuxsvr,10.0.0.7' (RSA) to the list of known hosts.
bob@linuxsvr's password:
[bob@linuxsvr ~]$
```

Terminal

Like Mac, Linux also comes with a terminal program and an SSH client. Once you are connected to one Linux server you can use the `ssh` command to connect to another Linux server. You can nest multiple connections and navigate through your network of Linux servers in this fashion.

General Information on Connecting via SSH with Keys

You may have not be given a password, but rather given an SSH key or even asked to generate one. In the physical world a key unlocks a door. Similarly, an SSH key is used to unlock the access to your account on a server. If you do not have a key, you cannot unlock the door.

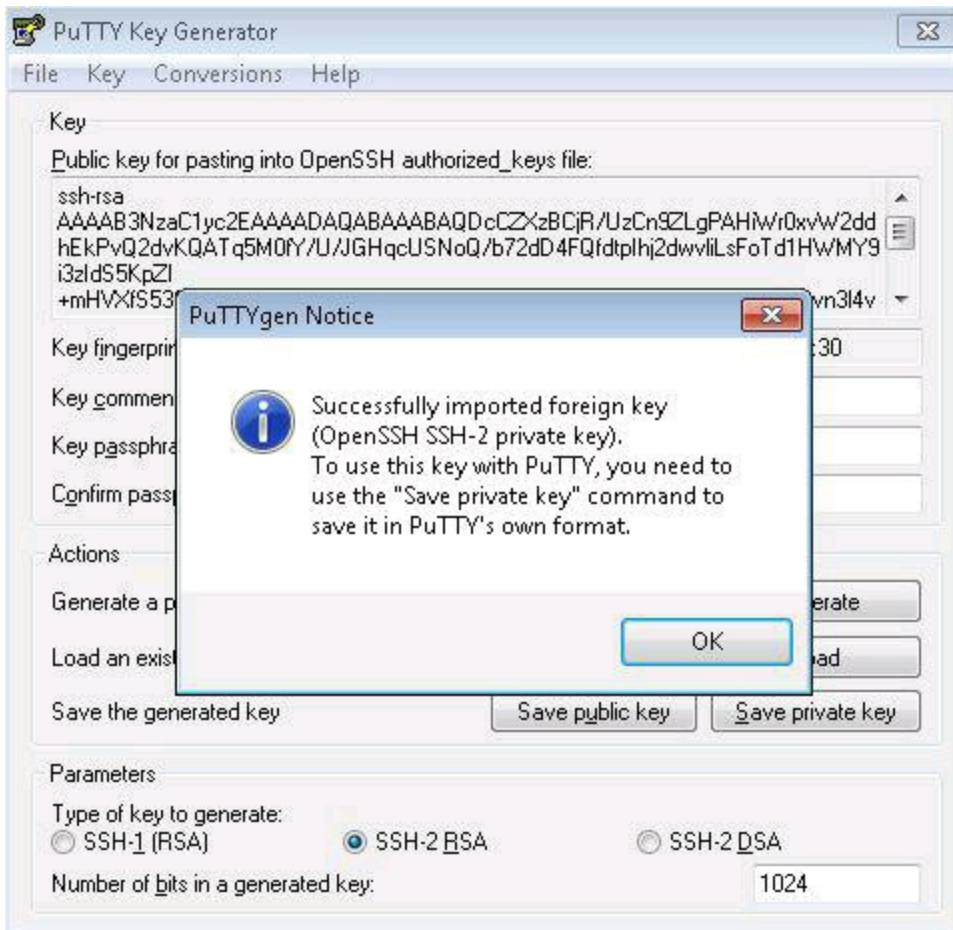
Using account passwords or a combination of account passwords and SSH keys is a common practice. With the growth of cloud computing in recent years, it is becoming more and more popular to use SSH keys exclusively. Since cloud servers are often connected to the public internet, they are prone to brute force attacks. A mischievous person could write a program that repeatedly connects to your server trying a new username and password combination each time. They can increase their odds of gaining entry by using a list of common usernames and passwords. Configuring your cloud server to not accept account passwords and to only accept SSH keys eliminates this threat.

You can further increase the security of your SSH key by giving it a passphrase. In this case it takes something you have -- the key -- and something you know -- the passphrase -- to gain access to your account. If you feel confident that your key will only be under your control, you can forgo providing a passphrase for your key. This will allow you to log into servers without typing a password at all. Having an SSH key without a passphrase can allow you to automate and schedule tasks that require logging in to remote systems.

Importing SSH Keys on Windows

If you were given an SSH key that is not already in the PuTTY format, you will need to convert it. PuTTYgen is required in order to convert an SSH key on a Windows system. Here is a direct download link to [puttygen.exe](http://the.earth.li/~sgtatham/putty/latest/x86/puttygen.exe): <http://the.earth.li/~sgtatham/putty/latest/x86/puttygen.exe>.

Run PuTTYgen, click `Load` and navigate to the private SSH key you were given. The names of the files are typically `id_rsa` or `id_dsa` for private keys, and `id_rsa.pub` or `id_dsa.pub` for public keys.



PuTTY

Now you can save the public and private keys for later use with PuTTY.

Generating SSH Keys on Windows

In order to create an SSH key on a Windows system, you will need PuTTYgen. Here is a direct download link to [puttygen.exe](http://the.earth.li/~sgtatham/putty/latest/x86/puttygen.exe): <http://the.earth.li/~sgtatham/putty/latest/x86/puttygen.exe>.



PuTTYgen

When you run PuTTYgen you will be asked to move the mouse around to create some random data that will be used in the generation of the key.



PuTTYgen

You have the option to use a passphrase for your key. You can also change the comment to something more meaningful like `Bob's key`.



PuTTYgen

Now, save the public and private keys by pressing `Save public key` and then `Save private key`. Give the public key to the system administrator so they can associate it with your account. The private key is for your eyes only. Do not share your private key!

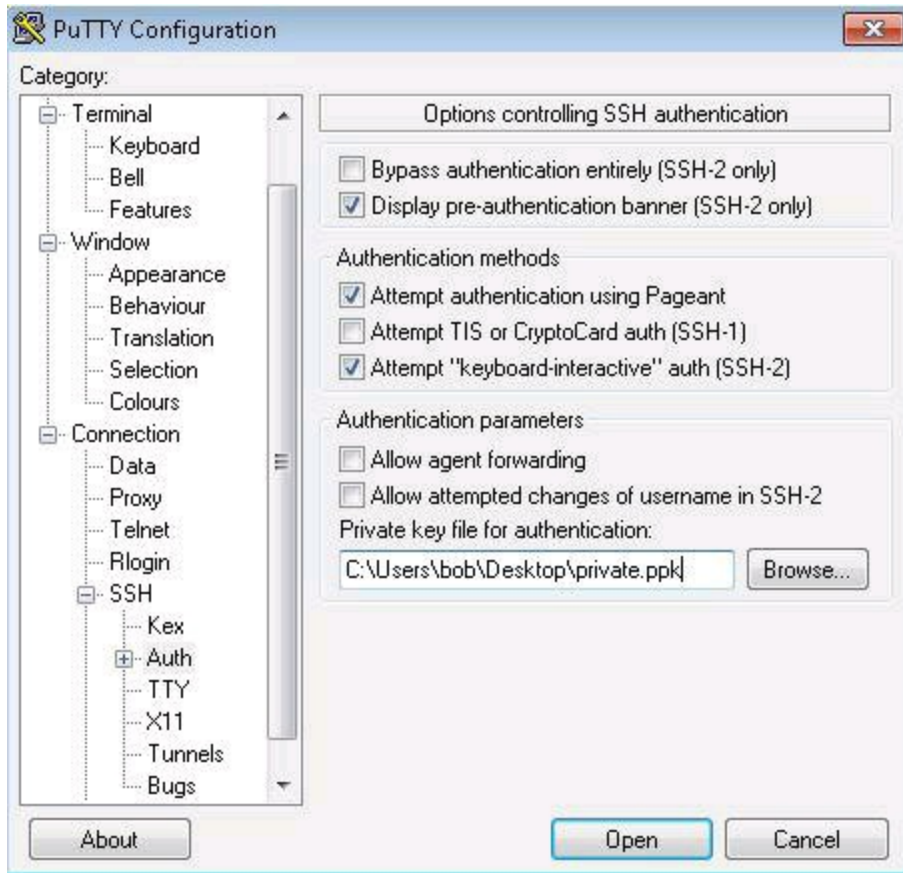
Next, export the key as an OpenSSH key by clicking on `Conversions` and then `Export OpenSSH Key`. This OpenSSH key can later be used on Unix or Linux systems.



PuTTYgen

Connecting via SSH from Windows

Follow the "[Connecting via SSH with a Password from Windows](#)" instructions, but this time add one additional step to specify your SSH private key file. You can do this by clicking on the plug sign (+) next to SSH in the left pane to reveal more options. Next click on Auth. In the right pane select Browse under the Private key file for authentication field and locate your private SSH key.



PuTTY

Generating SSH Keys on Mac

If you are asked to generate an SSH key, launch the Terminal application and use the command line utility named `ssh-keygen`. You will be asked a series of questions. Accept all the defaults by pressing `Enter`. Optionally enter a passphrase for your SSH key.

```
mac:~ bob$ ssh-keygen
Generating public/private rsa key pair.
Enter file in which to save the key (/Users/bob/.ssh/id_rsa):
Enter passphrase (empty for no passphrase):
Enter same passphrase again:
Your identification has been saved in /Users/bob/.ssh/id_rsa.
Your public key has been saved in /Users/bob/.ssh/id_rsa.pub.
The key fingerprint is:
0b:14:c5:85:5f:55:77:35:5f:9e:15:a9:b4:b0:54:05 bob@mac
The key's randomart image is:
+--[ RSA 2048]-----+
|      .o.o. .E+=@|
|      .o  o.. oO|
|      .  ...+ o.o|
|      .  ..  o  |
|      . S      |
|      . .      |
|      .        |
|                |
+-----+

```

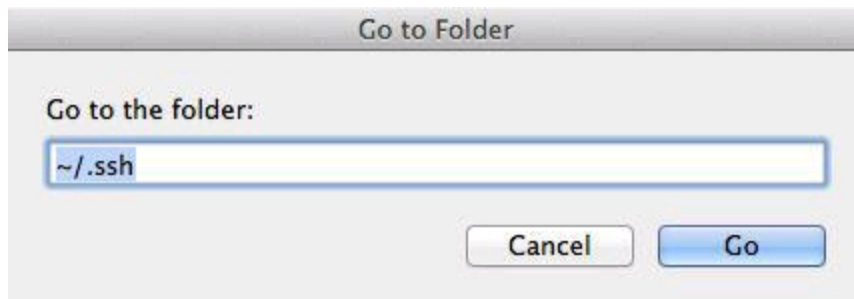
Connecting via SSH with Keys from Mac

If you generated your keys, this part is already done for you. If you were given an SSH key, you need to place it in a directory named `.ssh` underneath your home directory. Open the Terminal application and type in the following commands. Press the `Enter` key at the end of each line.

```
mkdir ~/.ssh
chmod 700 ~/.ssh
```

You will gain a full understanding of what these commands do as you progress through this book. In order to expedite the process of getting connected, the details will be saved for later.

Switch to the Finder to copy your keys into the `.ssh` folder. In the Finder menu click `Go` and then `Go to Folder...` and type `~/.ssh` when prompted. When you click `Go`, the `.ssh` folder will be displayed. Now you can drag your keys into place.



Go

Back in the Terminal window, set the proper permissions on your key files. (Again, these commands will be covered later.)

```
cd ~/.ssh
chmod 600 *
```

I highly recommend naming the keys in the following format: `id_rsa` and `id_rsa.pub` or `id_dsa` and `id_dsa.pub`. Otherwise, you will have to specify the location of your key when you use the `ssh` command or perform some additional configuration to tell SSH that your keys are not named in the standard way.

As a general rule it makes your life much easier if you follow the standard conventions and common practices. I will point them out along the way. One of the things I love most about Linux is the freedom and power it gives you to do things in a myriad of ways. There are cases where not following the standard conventions will be the right thing to do.

If you still wish to name your key something else, you can tell SSH where to find it by adding `-i key_location` to the `ssh` command. Remember, the format of the `ssh`

command we used above is `ssh -p port_number username@servername`. It can be expanded to `ssh -i key_location -p port_number username@servername`. Here's an example:

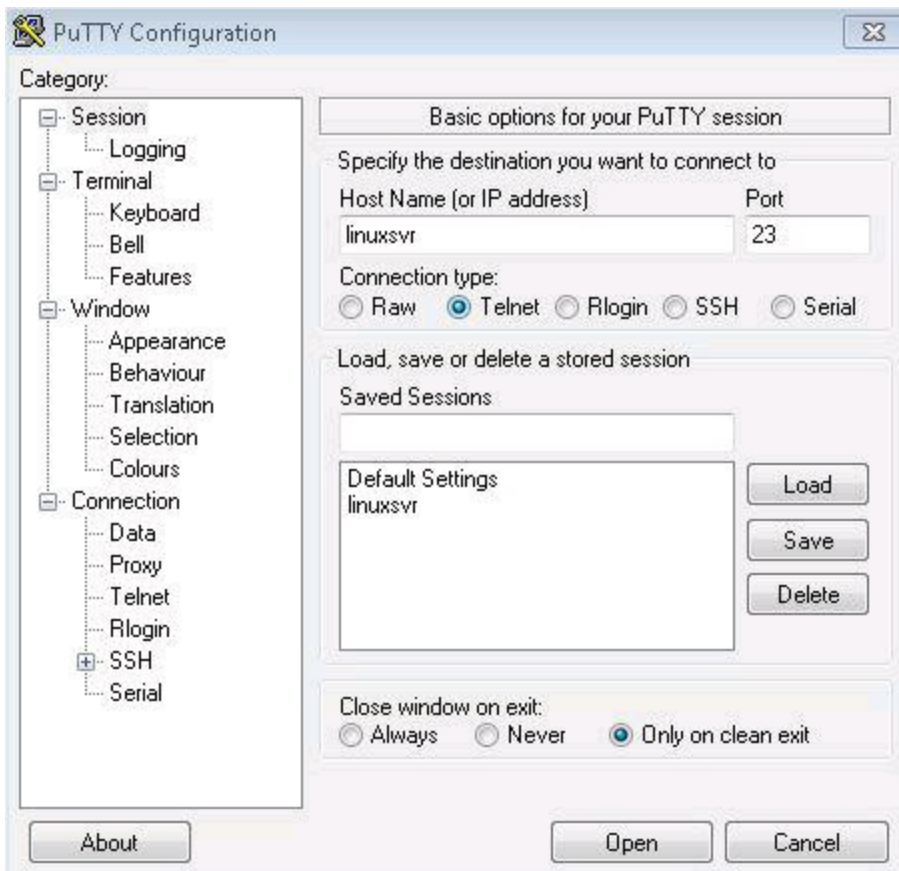
```
ssh -i /Users/bob/.ssh/bobs_key bob@linuxsvr
```

Connecting via Telnet

Telnet used to be the de facto way to connect to a Unix or Linux server. Over the years telnet has been replaced with Secure Shell, abbreviated SSH. SSH is, as its name implies, more secure than telnet. Telnet sends your login credentials over the network in plain text. SSH encrypts the communications between the client and the server, thus greatly improving security. If someone were to be packet snooping or eavesdropping on your connection, they would see garbled text and random characters. If you do have a need to telnet to a system you can use the SSH instructions from above, but with a couple of minor changes.

Connecting via Telnet from Windows

Run PuTTY and select the `Telnet` radio button. If no port was given to you, leave it at the default value of 23. You will be prompted for your username and password when you connect to the server.



PuTTY

Connecting via Telnet from Mac

The built-in telnet client on Mac is a command line program. Command line programs can be run with the `Terminal` application that comes with the Mac operating system. It

is located in the `/Applications/Utilities` folder. The format of the telnet command is `telnet servername port_number`. You only need to include a port number if it is different than the default value of 23. You will be prompted for your username and password when you connect to the server.

```
mac:~ bob$ telnet linuxsvr
Trying 10.0.0.7...
Connected to 10.0.0.7.
Escape character is '^]'.
Ubuntu 12.04.3 LTS
linuxsvr login: bob
Password:
Last login: Thu Nov  7 01:26:37 UTC 2013
Welcome to Ubuntu 12.04.3 LTS
```

```
* Documentation:  https://help.ubuntu.com/
```

```
System info as of Nov 7 01:26:52 UTC 2013
```

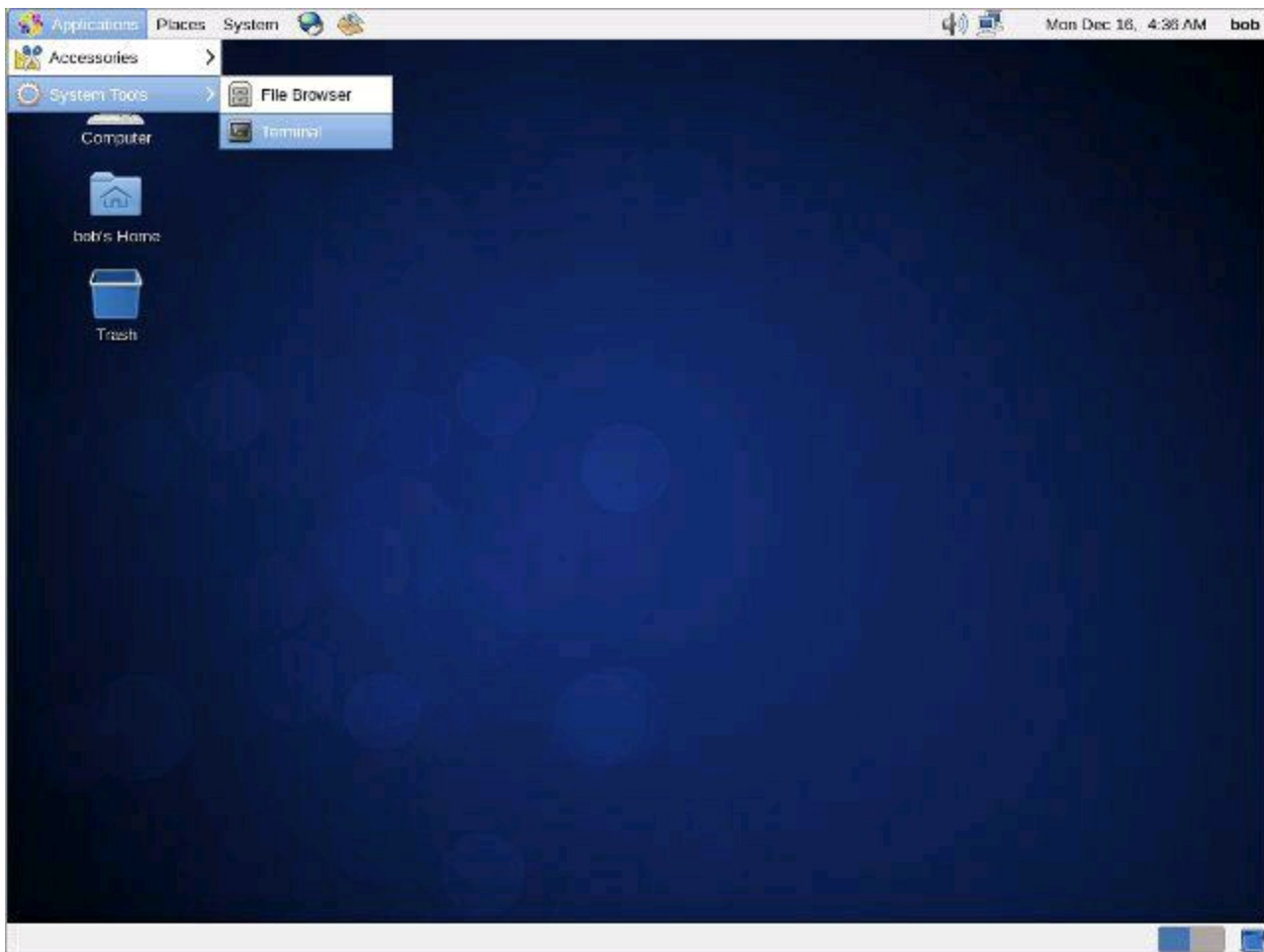
```
System load:  0.42
Usage of /:   3.1% of 40GB
Memory usage: 32%
Swap usage:   0%
Processes:           89
Users logged in:     0
IP address for eth0: 10.0.0.7
```

```
bob@linuxsvr:~$
```

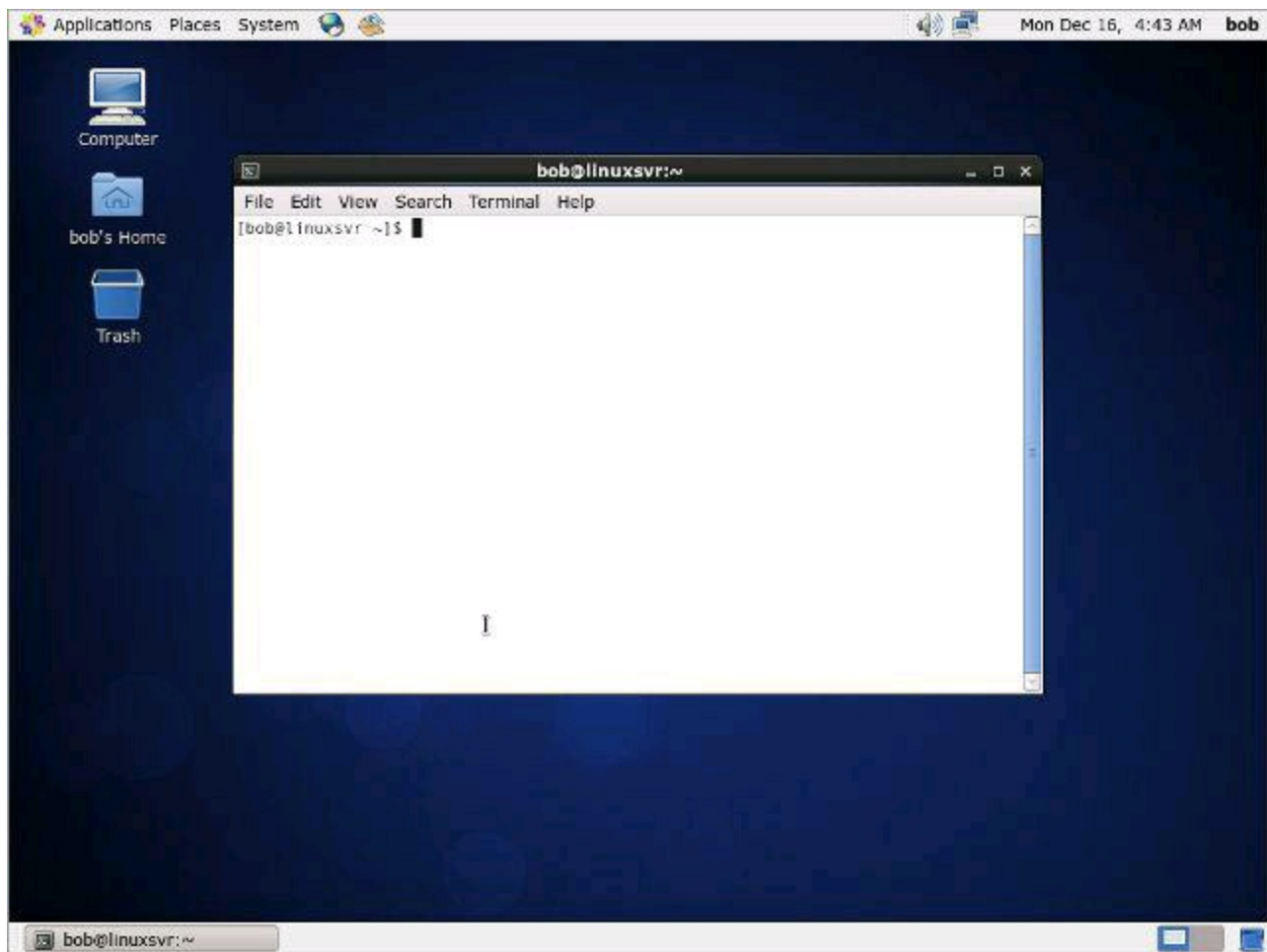
Connecting Directly

If you are running Linux in VirtualBox as described in the [previous chapter](#) or you have dedicated hardware with Linux installed on it, you can simply log in directly to the server. You will be presented with a prompt requesting your username and password. If it is a graphical environment, you will need to find a terminal application to use after you have logged in. In most cases it will literally be "terminal", but you might see some slight variations like "gnome terminal", "konsole", or "xterm."

Here is what opening the terminal application looks like in CentOS. You will find it in one of the menus.

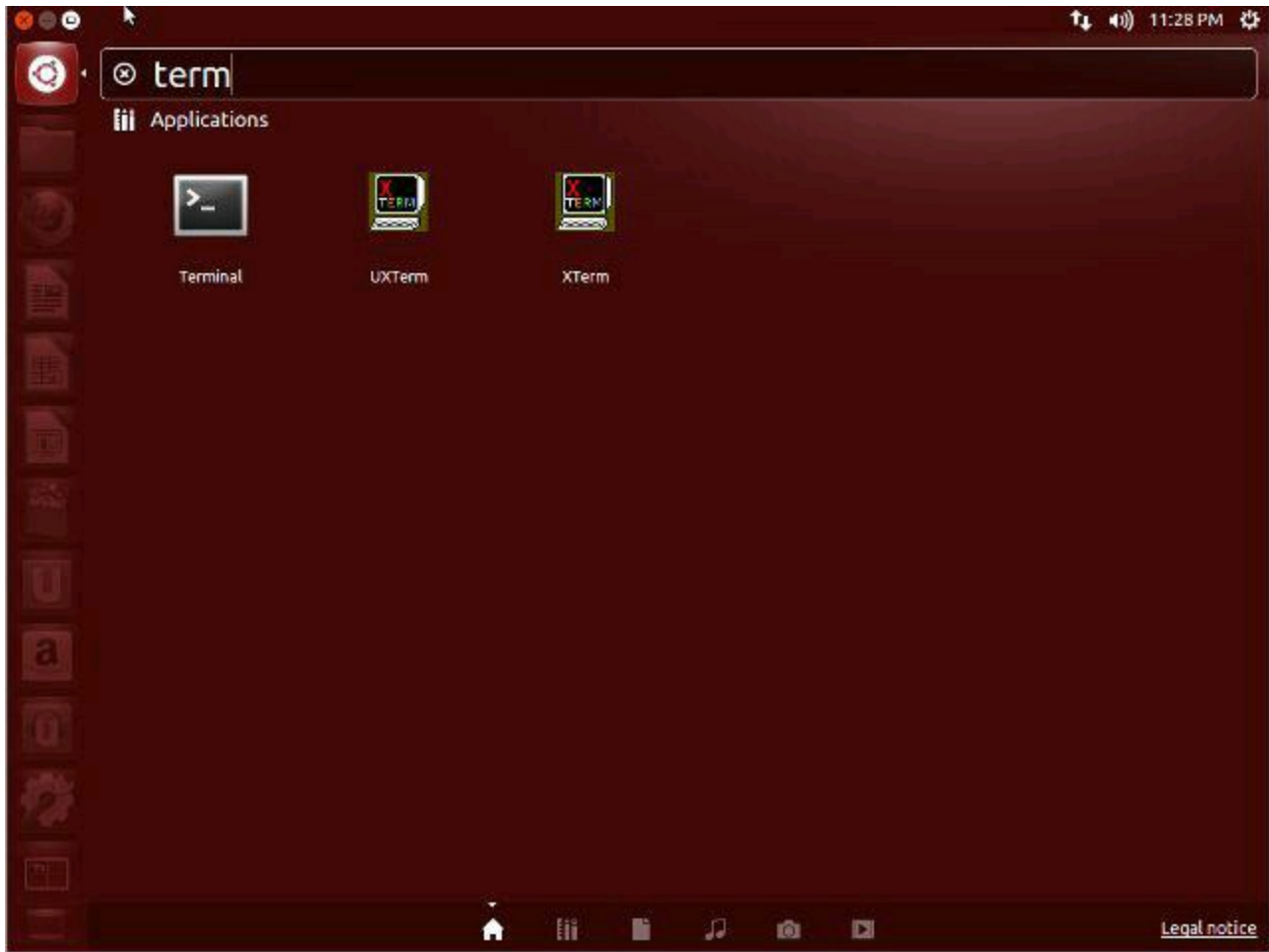


CentOS

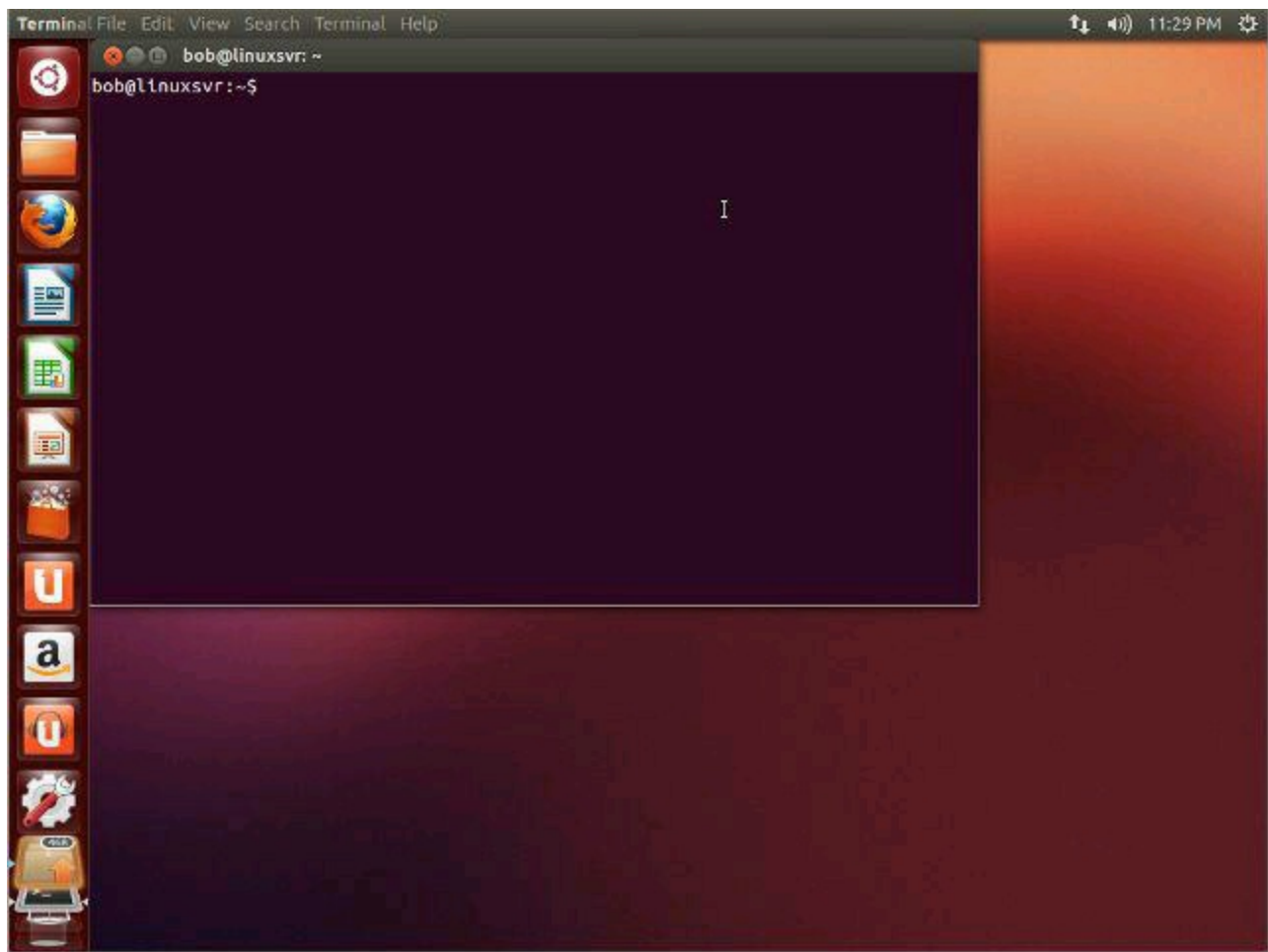


CentOS

In some Linux graphical environments there may not be a traditional menuing system. In these cases you will want to search for the terminal application. In this Ubuntu example, click the button in the top left of the screen to bring up the dashboard. You can now start typing to find applications that are installed on the system.



Ubuntu



Ubuntu

Deep Dive

- [21 Windows SSH Clients You Can Use to Connect to Your Linux Server](#) - An article that lists 21 of the most popular Windows SSH clients.
- [List of Mac SSH clients](#)
- [List of SSH clients, all platforms](#)
- [List of Terminal Emulators](#) - Includes terminals for Windows, Mac, and Linux.
- [List of Telnet Clients](#)
- [List of Windows SSH clients](#)
- [OpenSSH.org](#) - The official website for OpenSSH.
- [PuTTY](#)
 - [PuTTY Documentation](#)
 - [putty.exe](#)
 - [puttygen.exe](#)
 - [putty.zip](#) - A zip file containing all of the PuTTY program files.
- Watch Star Wars over a telnet connection.
 - `telnet towel.blinkenlights.nl`
 - To disconnect, hold down the `Ctrl` key and press the right bracket (`]`). At the `telnet >` prompt type `quit` and press `Enter`.
- [Using SSH Public Key Authentication](#)

Welcome to Shell

When you log into a server over the network the shell program is started and acts as your default interface to the system. The shell is nothing more than a program that accepts your commands and executes those commands. Said another way, the shell is a command line interpreter.

Let's look at the shell prompt you'll be working with. The prompt just sits and stares at you waiting for you do something interesting like give it a command to execute. Here is Bob's shell prompt.

```
bob@linuxsvr $
```

Bob's prompt is in a common format of `username@servername $`. In this example, the prompt is displaying the username, the server name, and if that user is using the system as a normal user (`$`) or a superuser (`#`).

The superuser on a Linux system is also called root. Anything that can be done on a server can be done by root. However, normal users can only do a subset of the things root can do. Root access is typically restricted to system administrators, but if you happen to support an application on a Linux server you may need root privileges to install, start, or stop it. There are ways to grant specific users root privileges for specific cases. This is often accomplished with the `sudo -- SuperUser Do --` program. That will be covered [later](#). For now, just know that most of your day to day activities will be performed using a normal user account.

Your prompt might not look like Bob's. Common items that appear in prompts include the username, server name, present working directory, and the current time. Here are a few more prompt examples.

```
[bob@linuxsvr /tmp]$  
linuxsvr:/home/bob>  
bob@linuxsvr:~>  
[16:45:51 linuxsvr ~]$  
$  
%  
>
```

In two of the prompt examples you will notice a tilde (`~`). The tilde is a shorthand way of representing your home directory. In this example the tilde (`~`) is equivalent to `/home/bob`, which is Bob's home directory. This is called tilde expansion. A username can be specified after the tilde and it will be expanded to the given user's home directory. For example, `~mail` would expand to the home directory of the mail user which is `/var/spool/mail`. Another example is `~pat` expanding to `/home/pat`.

Prompts do not have to be contained on a single line. They can span multiple lines as

in the following examples.

```
linuxsvr: [/home/bob]  
$
```

```
(bob@linuxsvr) - (06:22pm--11/18) - ] -  
(~)
```

```
[Mon 13/11/18 18:22 EST] [pts/0] [x86_64]  
<bob@linuxsvr:~>  
zsh 14 %
```

```
linuxsvr Mon Nov 18 06:22pm  
~/
```

For the remainder of this book the prompt will be shortened to the dollar sign (\$) unless displaying the full prompt provides additional clarity. Also, the default prompt may vary from system to system, but you can customize it to your liking. That, along with other shell related topics, is covered in a [later chapter](#).

Deep Dive

- [Tilde Expansion](#)
- [Welcome Back to Shell](#)

Linux Directory Structure

Now that you are able to connect to the server and have been introduced to the interface you will be using, it's time to learn about the directory layout. Understanding the directory structure will help you in the future when you are searching for components on the system. It can help you answer questions like:

Where are programs located?

Where do configuration files live?

Where might I find the log files for this application?

Common Directories

Here are the most common top level directories that you need to be aware of and may interact with as a normal user.

Dir **Description**

- `/` The directory called "root." It is the starting point for the file system hierarchy.
Note that this is not related to the root, or superuser, account.
- `/bin` Binaries and other executable programs.
- `/etc` System configuration files.
- `/home` Home directories.
- `/opt` Optional or third party software.
- `/tmp` Temporary space, typically cleared on reboot.
- `/usr` User related programs.
- `/var` Variable data, most notably log files.

Comprehensive Directory Listing

Here is a comprehensive list of top level directories that you may find on various Linux systems. Some subdirectories are included to help clearly define the purpose of the top level directory. You may never interact with many of these directories. Some of these directories will be on every system you encounter like `/usr`. Other directories are unique to specific Linux distributions. You can safely skim over this list and refer back to it if or when you have a practical need to do so.

Dir	Description
<code>/</code>	The directory called "root." It is the starting point for the file system hierarchy. Note that this is not related to the root, or superuser, account.
<code>/bin</code>	Binaries and other executable programs.
<code>/boot</code>	Files needed to boot the operating system.
<code>/cdrom</code>	Mount point for CD-ROMs.
<code>/cgroup</code>	Control Groups hierarchy.
<code>/dev</code>	Device files, typically controlled by the operating system and the system administrators.
<code>/etc</code>	System configuration files.
<code>/export</code>	Shared file systems. Most commonly found on Solaris systems.
<code>/home</code>	Home directories.
<code>/lib</code>	System Libraries.
<code>/lib64</code>	System Libraries, 64 bit.
<code>/lost+found</code>	Used by the file system to store recovered files after a file system check has been performed.
<code>/media</code>	Used to mount removable media like CD-ROMs.
<code>/mnt</code>	Used to mount external file systems.
<code>/opt</code>	Optional or third party software.
<code>/proc</code>	Provides information about running processes.
<code>/root</code>	The home directory for the root account.
<code>/sbin</code>	System administration binaries.
<code>/selinux</code>	Used to display information about SELinux.
<code>/srv</code>	Contains data which is served by the system.
<code>/srv/www</code>	Web server files.
<code>/srv/ftp</code>	

FTP files
Used to display and sometimes configure the devices and busses known to the Linux kernel.

/sys

/tmp Temporary space, typically cleared on reboot. This directory can be used by the OS and users alike.

/usr User related programs, libraries, and documentation. The sub-directories in /usr relate to those described above and below.

/usr/bin Binaries and other executable programs.

/usr/lib Libraries.

/usr/local Locally installed software that is not part of the base operating system.

/usr/sbin System administration binaries.

/var Variable data, most notably log files.

/var/log Log files.

Unix Specific Directories

Linux is often found in environments with other Unix variants. If you ever have a need to log into a Unix server you may see some of the following Unix specific directories.

Dir	Description
<code>/devices</code>	Device files, typically controlled by the operating system and the system administrators.
<code>/kernel</code>	Kernel and kernel modules. (Solaris)
<code>/platform</code>	Platform specific files. (Solaris)
<code>/rpool</code>	ZFS root pool directory. (Solaris)
<code>/net</code>	Used to mount external file systems. (HP-UX)
<code>/nfs4</code>	Used to mount the Federated File System domain root. (Solaris)
<code>/stand</code>	Files needed to boot HP-UX.

Note that you may encounter other top level directories that have not been listed above. However, those were most likely created by the system administrator.

Application Directory Structures

Applications can follow the same conventions employed by the operating system. Here is a sample directory structure of an application named `apache` installed in `/usr/local`.

Dir	Description
<code>/usr/local/apache/bin</code>	The application's binaries and other executable programs.
<code>/usr/local/apache/etc</code>	Configuration files for the application.
<code>/usr/local/apache/lib</code>	Application libraries.
<code>/usr/local/apache/logs</code>	Application log files.

Here is what it might look like if it was installed in `/opt`.

Dir	Description
<code>/opt/apache/bin</code>	The application's binaries and other executable programs.
<code>/opt/apache/etc</code>	Configuration files for the application.
<code>/opt/apache/lib</code>	Application libraries.
<code>/opt/apache/logs</code>	Application log files.

A common alternative to placing all the application subdirectories in `/opt/app-name` is to also use `/etc/opt/app-name` and `/var/opt/app-name`. Here is what that might look like for our example `apache` application.

Dir	Description
<code>/etc/opt/apache</code>	Configuration files for the application.
<code>/opt/apache/bin</code>	The application's binaries and other executable programs.
<code>/opt/apache/lib</code>	Application libraries.
<code>/var/opt/apache</code>	Application log files.

Sometimes applications that are not part of the standard operating system are installed in a shared manner and are not given their own subdirectory. For example, if `apache` was installed directly into `/usr/local` its binaries would live in `/usr/local/bin` and its configuration would live in `/usr/local/etc`. Apache may not be the only locally installed software so it would share that space with the other installed applications.

Another common practice is to create a directory structure based on a company, organization, or team name. For example, if you work at the Acme Corporation you may find a directory named `/opt/acme` or `/usr/local/acme`. Sometimes scripts and utilities are installed directly in that structure and other times there are segregated into their own subdirectories. Here's an example.

Dir	Description
<code>/opt/acme</code>	Company top level directory.
<code>/opt/acme/bin</code>	Binary programs created by or installed by the Acme Corporation.

Alternatively you may see something like this.

Dir	Description
<code>/opt/acme</code>	Company top level directory.
<code>/opt/acme/apache</code>	The top level directory for Acme's installation of apache.
<code>/opt/acme/apache/bin</code>	The apache binary programs.

Here are variations on the same idea, but based on a team within the company.

Dir	Description
<code>/opt/web-team</code>	The web support team's top level directory.
<code>/opt/acme/web-team</code>	The web support team's top level directory.
<code>/usr/local/acme/web-team</code>	The web support team's top level directory.

Example Top Level Directory Listings

Here is a listing of the top level directories for a few different Linux servers. Listing files and directories with the `ls` command will be covered in the [next chapter](#).

Red Hat Enterprise Linux 7 (RHEL)

```
[bob@rhel6 ~]$ ls -l /
bin
boot
cgroup
dev
etc
home
lib
lib64
lost+found
media
mnt
opt
proc
root
sbin
selinux
srv
sys
tmp
usr
var
```

SUSE Linux Enterprise Server 11 (SLES)

```
[bob@sles11 ~]$ ls -l /
bin
boot
dev
etc
home
lib
lib64
lost+found
media
mnt
opt
proc
root
sbin
selinux
srv
sys
tmp
```

usr

Ubuntu 14.04 LTS

```
[bob@ubuntu12 ~]$ ls -l /  
bin  
boot  
dev  
etc  
home  
lib  
lib64  
lost+found  
media  
mnt  
opt  
proc  
root  
run  
sbin  
selinux  
srv  
sys  
tmp  
usr  
var
```

Deep Dive

- [Filesystem Hierarchy Standard](#)
- man hier
- [RedHat Enterprise Linux](#)
- [SUSE Linux Enterprise Server](#)
- [Ubuntu](#)

Basic Linux Commands

Here is a short list of basic, but essential commands. In Linux, commands are case-sensitive and more often than not they are entirely in lowercase. Items that are surrounded by brackets ([]) are optional. You will more than likely use at least some of these commands every time you log into a Linux system. Become familiar with these commands because they can get you pretty far in a short amount of time.

`ls` - Lists directory contents. You will use `ls` to display information about files and directories.

`cd [dir]` - Changes the current directory to `dir`. If you execute `cd` without specifying a directory, `cd` changes the current directory to your home directory. This is how you navigate around the system.

`pwd` - Displays the present working directory name. If you don't know what directory you are in, `pwd` will tell you.

`cat [file]` - Concatenates and displays files. This is the command you run to view the contents of a file.

`echo [argument]` - Displays arguments to the screen.

`man command` - Displays the online manual for `command`. Type `q` to quit viewing the manual page. The documentation provided by the `man` command is commonly called "man pages."

`exit`, `logout`, or `Ctrl-d` - Exits the shell or your current session.

`clear` - Clears the screen.

Here is a screen capture of Bob's session using the above commands.

```
$ ls
PerformanceReviews sales-lecture.mp3 sales.data tpsreports
$ cd tpsreports
$ pwd
/home/bob/tpsreports
$ ls -l
total 2
-rw-r--r-- 1 bob users 31 Sep 28 14:49 coversheet.doc
-rw-r--r-- 1 bob users 35 Sep 27 08:47 sales-report.txt
$ cat sales-report.txt
We sold lots of widgets this week!
$ echo $PATH
/bin:/usr/bin:/usr/sbin:/usr/local/bin
$ man ls
NAME
```

```
ls - list directory contents
```

...

More details on how you can fully exploit the power of these simple commands will be covered later. But right now, grab your fishing pole -- you're about to learn how to fish.

Teach Yourself to Fish

Knowing where executable commands live and the `man` command can take you a long way. You can teach yourself how to use Linux with this method, but it would be a long, slow process. More often than not, the `man` command will be used as a quick reference. It would be nearly impossible to memorize every option for every command and there is no need to do so when you have the `man` command at your fingertips.

To get help for the `man` command type the letter `h` while viewing a manual page. That will give you a list of commands you can use to navigate or search. Here is the concise version.

`Enter` - Move down one line.

`Space` - Move down one page.

`g` - Move to the top of the page.

`G` - Move to the bottom of the page.

`q` - Quit.

An environment variable is a storage location that has a name and a value. The one we are interested in at the moment is `PATH`. The `PATH` environment variable contains a list of directories that contain executable commands. You can determine the value of `PATH` by prepending it with a dollar sign (`$PATH`) and using the `echo` command to display its value to the screen.

```
$ echo $PATH
/bin:/usr/bin:/usr/sbin:/usr/local/bin
```

When you type in a command at the prompt and press `Enter`, that command will be searched for in the directories in your `$PATH`. In this example, `/bin` will be searched first. If the command is found it will be executed. If it is not found, then `/usr/bin` will be searched and so on. If no executable command is found that matches your request, you will be politely told that it cannot be found.

```
$ whatsupdoc
-bash: whatsupdoc: command not found
```

If you want to know exactly where a command is located you can use the `which` command. If the program `cat` is located in `/usr/bin` and in `/usr/local/bin`, the one which will get executed depends on your `$PATH`.

```
$ which cat
/bin/cat
$ which tac
/usr/bin/tac
```

Putting this all together, you can start looking at what is in each directory in your `$PATH` and use the `man` command to discover what each one of them does and how to use them. Remember, to exit the `man` command type the letter `q`.

```
$ echo $PATH
/bin:/usr/bin:/usr/sbin:/usr/local/bin
$ cd /bin
$ ls
awk diff cal cat cp date du echo grep groups less more
$ man diff
NAME
    diff - compare two files
...
$ cd /usr/bin
$ ls
clear crontab cut dos2unix find kill mv pstree pwd sed strings touch
$ man touch
```

Note that the output of the above `ls` commands was truncated. In reality there can be hundreds of commands in `/bin` and `/usr/bin`.

Many commands will provide hints for how to use them at the command line. Some commands will accept the `-h` flag, others will accept `--help`, and some will refuse to give you any help at all.

```
$ cal -h
```

Usage:

```
cal [options] [[[day] month] year]
```

Options:

```
-1, --one          show only current month (default)
-3, --three       show previous, current and next month
-s, --sunday      Sunday as first day of week
-m, --monday      Monday as first day of week
-j, --julian      output Julian dates
-y, --year        show whole current year
-V, --version     display version information and exit
-h, --help       display this help text and exit
```

```
$ diff --help
```

Usage: diff [OPTION]... FILES

Compare files line by line.

```
-i --ignore-case  Ignore case differences in file contents.
--ignore-file-name-case  Ignore case when comparing file names.
```

...

If you are not sure what command to use, you can search through the man pages with `man -k KEYWORD`. From there you can read the man page for the command or ask it for help with `-h` or `--help`.

```
$ man -k calendar
cal          (1)  - display a calendar
zshcalsys   (1)  - zsh calendar system
```

Deep Dive

- Environment Variables are covered in more depth in the "[Welcome Back to Shell](#)" chapter.
- [ExplainShell](#) - Type in a command-line to display help for each item.
- [Getting Help From Linux](#) - An article from the [Linux Journal](#) on using man pages.
- [LinuxManPages.com](#) - This website allows you to search man pages or browse a category of commands and man pages.
- [Linux Commands Documentation](#) - Linux commands broken down by category.

Working with Directories

Directories are simply containers for files and other directories. They provide a tree like structure for organizing the system. Directories can be accessed by their name and they can also be accessed using a couple of shortcuts. Linux uses the symbols `.` and `..` to represent directories. Think of `.` as "this directory" and `..` as "the parent directory."

Symbol Description

<code>.</code>	This directory.
<code>..</code>	The parent directory.
<code>/</code>	Directory separator. Directories end in a forward slash and this is often assumed.

The directory separator is optional for the last subdirectory in a path or command. For example, the following commands work identically.

```
$ cd /var/tmp
$ cd /var/tmp/
```

Using the shortcuts can make navigating easier. For example, type `cd ..` to go to the directory just above your current directory.

```
$ pwd
/home/bob
$ cd tpsreports
$ pwd
/home/bob/tpsreports
$ cd ..
$ pwd
/home/bob
$ cd ..
$ pwd
/home
$ cd .
$ pwd
/home
```

The `cd .` command did not take you anywhere. Remember that `.` is "this directory" and `..` is "the parent directory." Another shortcut for navigating directories is `cd -`. This command takes you to the previous directory. The environment variable that represents your previous working directory is `OLDPWD`. So, `cd -` and `cd $OLDPWD` are equivalent.

```
$ pwd
```

```
/home/bob
$ cd /var/tmp
$ pwd
/var/tmp
$ echo $OLDPWD
/home/bob
$ cd -
/home/bob
$
```

How would you execute a command that is in your current directory? Assume your current directory is your home directory. By default your home directory is not in your `$PATH`. Here is how to do that.

```
$ ./program
```

Why does that work? Well, `.` represents "this directory", `/` is the directory separator, and `program` is the program to execute. You can always use the full path to be explicit. Here are two ways to execute `program`.

```
$ pwd
/home/bob
$ ./program
$ /home/bob/program
```

Creating and Removing Directories

The `mkdir` command is used to create directories and the `rmdir` command removes them.

`mkdir [-p] directory` - Create a directory. Use the `-p` (parents) option to create intermediate directories.

`rmdir [-p] directory` - Remove a directory. Use the `-p` (parents) option to remove all the specified directories. `rmdir` only removes empty directories. To remove directories and their contents, use `rm`.

`rm -rf directory` - Recursively removes the directory and all files and directories in that directory structure. *Use with caution.* There is no "trash" container to quickly restore your file from when using the command line. When you delete something, it is gone.

```
$ mkdir newdir
$ mkdir newdir/product/reviews
mkdir: Failed to make directory "newdir/product/reviews"; No such fi
$ mkdir -p newdir/product/reviews
$ rmdir newdir
rmdir: directory "newdir": Directory not empty
$ rm -rf newdir
$ ls newdir
ls: newdir: No such file or directory
$ pwd
/home/bob
$ cd ..
$ pwd
/home
```

Your Free Gift

As a thank you for reading *Linux for Beginners*, I would like to give you a copy of [Linux Alternatives to Windows Applications](http://www.linuxtrainingacademy.com/linux-apps/). In it, you will be introduced to over 50 of the most popular applications available for Linux today. These applications will allow you to browse the web, watch movies, listen to music, connect to your favorite social networks, create presentations, and more. If you are curious about what Linux has to offer, get your FREE copy today by visiting <http://www.linuxtrainingacademy.com/linux-apps/>.

I also want to give you a 25% discount off of the [Linux for Beginners Video Training Course](http://www.linuxtrainingacademy.com/25off). If you want to see the concepts covered in this book come to life in video, check it out. It can really reinforce your learning. Simply visit <http://www.linuxtrainingacademy.com/25off> and the coupon code "LFB" will automatically be applied.

One more thing. If you are finding value in this book I want to invite you to go to <http://www.amazon.com/gp/product/B00HNC1AXY> and leave a five star review. Not only does that encourage me to create more resources for this book, it also helps others like you find this content.

Linux for Beginners now continues with "Listing Files and Understanding `ls` Output."

Listing Files and Understanding `ls` Output

Here is the output from an `ls` command using the `-l` option. The `-l` flag tells `ls` to display output in a long format. If you need to see what files or directories exist, use `ls`. However, if you need detailed information use `ls -l`.

```
$ ls -l
-rw-rw-r-- 1 bob users 10400 Sep 27 08:52 sales.data
```

On the far left of the `ls` output is a series of characters that represent the file permissions. The number that follows the permissions represents the number of links to the file. The next bit of information is the owner of the file followed by the group name. Next the file size is displayed followed by the date and time when the file was last modified. Finally, the name of the file or directory is displayed. Here is the information displayed by the `ls -l` command in table form.

Item	Value
Permissions	-rw-rw-r--
Number of links	1
Owner name	bob
Group name	users
Number of bytes in the file	10400
Last modification time	Sep 27 08:52
File name	sales.data

The meaning of `-rw-rw-r--` will be covered in detailed in the "[File and Directory Permissions Explained](#)" chapter.

Listing All Files, Including Hidden Files

Files or directories that begin with a period (.) are considered hidden and are not displayed by default. To show these hidden files and directories, use the `-a` option.

```
$ ls -a
.
..
.profile
.bash_history
PerformanceReviews
sales-lecture.mp3
sales.data
tpsreports
```

Up until this point when you have used options, you have preceded each option with a hyphen (-). Examples are `-l` and `-a`. Options that do not take arguments can be combined. Only one hyphen is required followed by the options. If you want to show a long `ls` listing with hidden files you could run `ls -l -a` or `ls -la`. You can even change the order of the flags, so `ls -al` works too. They are all equivalent.

```
$ ls -l
total 2525
drwxr-xr-x  3 bob users 512      Sep 28 09:20 PerformanceReviews
-rw-r--r--  1 bob sales 2562856 Sep 27 08:54 sales-lecture.mp3
-rw-r--r--  1 bob users 10400   Sep 27 08:52 sales.data
drwxr-xr-x  2 bob users 512      Sep 28 14:49 tpsreports
$ ls -l -a
total 2532
drwxr-xr-x  4 bob sales 512      Sep 28 14:56 .
drwxr-xr-x 14 root root 512      Sep 27 08:43 ..
-rw-r--r--  1 bob users 28       Sep 28 14:22 .profile
-rw-----  1 bob users 3314    Sep 28 14:56 .bash_history
drwxr-xr-x  3 bob users 512      Sep 28 09:20 PerformanceReviews
-rw-r--r--  1 bob sales 2562856 Sep 27 08:54 sales-lecture.mp3
-rw-r--r--  1 bob users 10400   Sep 27 08:52 sales.data
drwxr-xr-x  2 bob users 512      Sep 28 14:49 tpsreports
$ ls -la
total 2532
drwxr-xr-x  4 bob sales 512      Sep 28 14:56 .
drwxr-xr-x 14 root root 512      Sep 27 08:43 ..
-rw-r--r--  1 bob users 28       Sep 28 14:22 .profile
-rw-----  1 bob users 3314    Sep 28 14:56 .bash_history
drwxr-xr-x  3 bob users 512      Sep 28 09:20 PerformanceReviews
-rw-r--r--  1 bob sales 2562856 Sep 27 08:54 sales-lecture.mp3
-rw-r--r--  1 bob users 10400   Sep 27 08:52 sales.data
drwxr-xr-x  2 bob users 512      Sep 28 14:49 tpsreports
$ ls -al
total 2532
drwxr-xr-x  4 bob sales 512      Sep 28 14:56 .
```

```
drwxr-xr-x 14 root root 512 Sep 27 08:43 ..
-rw-r--r-- 1 bob users 28 Sep 28 14:22 .profile
-rw----- 1 bob users 3314 Sep 28 14:56 .bash_history
drwxr-xr-x 3 bob users 512 Sep 28 09:20 PerformanceReviews
-rw-r--r-- 1 bob sales 2562856 Sep 27 08:54 sales-lecture.mp3
-rw-r--r-- 1 bob users 10400 Sep 27 08:52 sales.data
drwxr-xr-x 2 bob users 512 Sep 28 14:49 tpsreports
$
```

Listing Files by Type

When you use the `-F` option for `ls` a character is appended to the file name that reveals what type it is.

```
$ ls
dir1 link program regFile
$ ls -F
dir1/ link@ program* regFile
$ ls -lF
total 8
drwxr-xr-x 2 bob users 117 Sep 28 15:31 dir1/
lrwxrwxrwx 1 bob users 7 Sep 28 15:32 link@ -> regFile
-rwxr-xr-x 1 bob users 10 Sep 28 15:31 program*
-rw-r--r-- 1 bob users 750 Sep 28 15:32 regFile
```

Symbol Meaning

- / Directory.
- @ Link. The file that follows the `->` symbol is the target of the link.
- * Executable program.

A link is sometimes called a symlink, short for symbolic link. A link points to the location of the actual file or directory. You can operate on the link as if it were the actual file or directory. Symbolic links can be used to create shortcuts to long directory names. Another common use is to have a symlink point to the latest version of installed software as in this example.

```
bob@linuxsvr:~$ cd /opt/apache
bob@linuxsvr:/opt/apache ~$ ls -F
2.4.5/ 2.4.7/ current@ README
bob@linuxsvr:/opt/apache$ ls -l
drwxr-xr-x 2 root root 4096 Sep 14 12:21 2.4.5
drwxr-xr-x 2 root root 4096 Nov 27 15:43 2.4.7
lrwxrwxrwx 1 root root 5 Nov 27 15:43 current -> 2.4.7
-rw-r--r-- 1 root root 1048 Sep 14 12:58 README
```

Listing Files by Time and in Reverse Order

If you would like to sort the `ls` listing by time, use the `-t` option.

```
$ ls -t
tpsreports
PerformanceReviews
sales-lecture.mp3
sales.data
$ ls -lt
total 2532
drwxr-xr-x 2 bob users 512 Sep 28 14:49 tpsreports
drwxr-xr-x 3 bob users 512 Sep 28 09:20 PerformanceReviews
-rw-r--r-- 1 bob sales 2562856 Sep 27 08:54 sales-lecture.mp3
-rw-r--r-- 1 bob users 10400 Sep 27 08:52 sales.data
```

When you have a directory that contains many files it can be convenient to sort them by time, but in reverse order. This will put the latest modified files at the end of the `ls` output. The old files will scroll off the top of your display, but the most recent files will be right above your prompt.

```
$ ls -latr
total 2532
drwxr-xr-x 14 root root 512 Sep 27 08:43 ..
-rw-r--r-- 1 bob users 10400 Sep 27 08:52 sales.data
-rw-r--r-- 1 bob sales 2562856 Sep 27 08:54 sales-lecture.mp3
drwxr-xr-x 3 bob users 512 Sep 28 09:20 PerformanceReviews
-rw-r--r-- 1 bob users 28 Sep 28 14:22 .profile
drwxr-xr-x 2 bob users 512 Sep 28 14:49 tpsreports
drwxr-xr-x 4 bob sales 512 Sep 28 14:56 .
-rw----- 1 bob users 3340 Sep 28 15:04 .bash_history
```

Listing Files Recursively

Using the `-R` option with `ls` causes files and directories to be displayed recursively.

```
$ ls -R
.:
PerformanceReviews sales-lecture.mp3 sales.data tpsreports
./PerformanceReviews:

Fred John old

./PerformanceReviews/old:
Jane.doc
$
```

You can also use the `tree` command for more visually appealing output. If you only want to see the directory structure, use `tree -d`.

`tree` - List contents of directories in a tree-like format.

`tree -d` - List directories only.

`tree -C` - Colorize output.

```
$ tree
.
├── PerformanceReviews
│   ├── Fred
│   ├── John
│   └── old
│       └── Jane.doc
├── sales.data
├── sales-lecture.mp3
└── tpsreports
```

2 directories, 6 files

```
$ tree -d
.
├── PerformanceReviews
└── old
```

2 directories

```
$
```

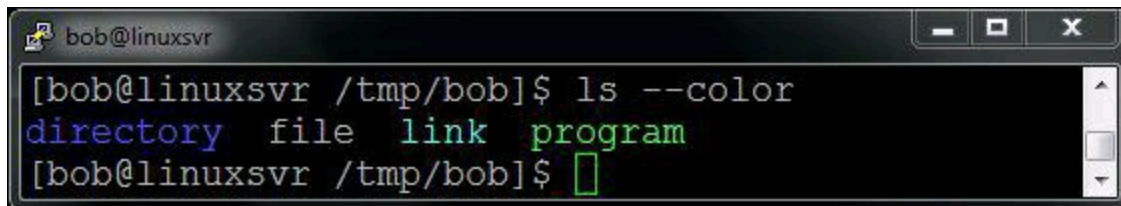
List Directories, Not Contents

Normally when you run `ls` against a directory the contents of that directory are displayed. If you want to ensure you only get the directory name, use the `-d` option.

```
$ ls -l PerformanceReviews
total 3
-rw-r--r-- 1 bob users 36 Sep 27 08:49 Fred
-rw-r--r-- 1 bob users 36 Sep 28 09:21 John
drwxr-xr-x 2 bob users 512 Sep 27 12:40 old
$ ls -ld PerformanceReviews
drwxr-xr-x 3 bob users 512 Sep 28 09:20 PerformanceReviews
$ ls -d PerformanceReviews
PerformanceReviews
```

Listing Files with Color

Earlier you used `ls -F` to help differentiate file types by adding a character to the end of their names in the `ls` output. You can also use color to distinguish file types by using `ls --color`.

A terminal window titled 'bob@linuxsvr' with standard window controls (minimize, maximize, close). The prompt is '[bob@linuxsvr /tmp/bob]\$'. The command 'ls --color' has been entered and executed. The output shows four words: 'directory' in blue, 'file' in white, 'link' in green, and 'program' in green. The prompt is now '[bob@linuxsvr /tmp/bob]\$' with a cursor in the empty space.

```
[bob@linuxsvr /tmp/bob]$ ls --color
directory file link program
[bob@linuxsvr /tmp/bob]$
```

picture alt

Commonly Used `ls` Options

Here is a recap of the `ls` options you have learned.

Option	Description
---------------	--------------------

<code>-a</code>	All files, including hidden files
<code>--color</code>	List files with colorized output
<code>-d</code>	List directory names and not their contents
<code>-l</code>	Long format
<code>-r</code>	Reverse order
<code>-R</code>	List files recursively
<code>-t</code>	Sort by time, most recently modified first

Working with Spaces in Names

If you want to make your life easier when working from the command line, do not use spaces in file and directory names. Hyphens (-) or underscores (_) can be good substitutes for spaces. CamelCase, the practice of capitalizing each word, is another good option. For example, instead of naming your latest literary attempt "the next great american novel.txt" you could use "the-next-great-american-novel.txt", "the_next_great_american_novel.txt" or even "TheNextGreatAmericanNovel.txt."

Sooner or later you will encounter a file or directory that contains a space in the name. There are two ways to deal with this. The first is to use quotation marks. Even though the file name is a file, operate on it using "a file." The second option is to escape the space. Escaping is like using quotes, but for single characters. The escape symbol is \, also known as a backslash. To escape a space, precede the space with the backslash (\) character.

```
$ ls -l
-rw-r--r-- 1 bob users 18 Oct 2 05:03 a file
$ ls -l a file
ls: a: No such file or directory
ls: file: No such file or directory
$ ls -l "a file"
-rw-r--r-- 1 bob users 18 Oct 2 05:03 a file
$ ls -l a\ file
-rw-r--r-- 1 bob users 18 Oct 2 05:03 a file
$ ls -lb a*
-rw-r--r-- 1 bob users 18 Oct 2 05:03 a\ file
$
```

The `-b` option to `ls` causes it to print escape codes. Note that quoting and escaping not only applies to spaces, but with other special characters as well including `|` `&` `'` `;` `(` `)` `<` `>` space tab.

Deep Dive

- [Escaping Special Characters in Linux and Unix: With 7 Practical Examples](#) - An article that takes a in-depth look at escaping.
- `man bash` - Look at the "QUOTING" section for handling special characters including spaces.
- `man ls` - To learn about all of the available options to `ls` refer to the man page.

File and Directory Permissions Explained

Looking back at the long listings provided by the `ls` command you see that the first bit of information displayed is the permissions for the given file or directory.

```
$ ls -l sales.data
-rw-r--r-- 1 bob users 10400 Sep 27 08:52 sales.data
```

The first character in the permissions string reveals the type. For example, `-` is a regular file, `d` is a directory, and `l` is a symbolic link. Those are the most common types you will encounter. For a full listing read the `ls` man page.

Symbol Type

- Regular file
- d Directory
- l Symbolic link

You will also notice other characters in the permissions string. They represent the three main types of permissions which are read, write, and execute. Each one is represented by a single letter, also known as a symbol. Read is represented by `r`, write by `w`, and execute by `x`.

Symbol Permission

- r Read
- w Write
- x Execute

Read, write, and execute are rather self explanatory. If you have read permissions you can see the contents of the file. If you have write permissions you can modify the file. If you have execute permissions you can run the file as a program. However, when these permissions are applied to directories they have a slightly different meaning than when they are applied to files.

Permission File Meaning

- Read Allows a file to be read.
- Write Allows a file to be modified.

Directory Meaning

- Allows file names in the directory to be read.
- Allows entries to be modified within the directory.

Execute Allows the execution of a file. Allows access to contents and metadata for entries in the directory.

There are three categories of users that these permissions can be applied to. These categories or classes are user, group, and other. Like the permission types, each set is represented by a single letter. The user who owns the file is represented by `u`, the users that are in the file's group are represented by `g`, and the other users who do not own the file or are not in the file's group are represented by `o`. The character `a` represents all, meaning user, group, and other. Even though these characters do not show up in an `ls` listing, they can be used to change permissions.

Symbol Category

`u` User
`g` Group
`o` Other
`a` All - user, group, and other.

Every user is a member of at least one group called their primary group. However, users can and often are members of many groups. Groups are used to organize users into logical sets. For example, if members of the sales team need access to some of the same files and directories they can be placed into the `sales` group.

Run the `groups` command to see what groups you are a member of. If you supply another users ID as an argument to the `groups` command you will see the list of groups to which that user belongs. You can also run `id -Gn [user]` to get the same result.

```
$ groups
users sales
$ id -Gn
users sales
$ groups pat
users projectx apache
$ groups jill
users sales manager
```

Secret Decoder Ring for Permissions

Now you have enough background information to start decoding the permissions string. The first character is the type. The next three characters represent the permissions available to the user, also known as the owner of the file. The next three characters represent the permissions available to the members of the file's group. The final three characters represent the permissions available to all others.

In this case order has meaning. Permission types will be displayed for user, followed by group, and finally for others. Also, the permission types of read, write, and execute are displayed in that order. If a particular permission is not granted a hyphen (-) will take its place.

Here is a graphical representation of the permission information displayed by `ls -l`.

```
  Type  Group
  ^     ^
  |     |
-rw-r--r-- 1 bob users 10400 Sep 27 08:52 sales.data
  |     |
  |     |
  User  Other
```

picture alt

If you happen to see an extra character at the end of the permissions string an alternative access control method has been applied. If you see a period (.), the file or directory has an SELinux (Security Enhanced Linux) security context applied to it. If you see a plus sign (+), ACLs (Access Control Lists) are in use. SELinux and ACLs are beyond the scope of this book. However, you will be pleased to know that the use of either of these is rare. If you are having troubles with permissions and notice an extra character in the permissions string, know that further investigation may be necessary.

```
$ ls -l sales.data.selinux
-rw-r--r--. 1 bob users 10400 Sep 27 08:52 sales.data.selinux
$ ls -l sales.data.acl
-rw-r--r--+ 1 bob users 10400 Sep 27 08:52 sales.data.acl
```

Changing Permissions

Permissions are also known as modes. That is why the command you use to change permissions is called `chmod`, short for "change mode." The format of the `chmod` command is `chmod mode file`. There are two ways to specify the mode. The first way is called symbolic mode. The symbolic mode format is `chmod user_category operator permission`. Here is a table view of the `chmod` command symbolic mode format.

Item Meaning

`chmod` The change mode command.

`ugoa` The user category. One or more of `u` for user, `g` for group, `o` for other, `a` for all.

`+ -=` One of `+`, `-`, or `=`. Use `+` to add permissions, `-` to subtract them, or `=` to explicitly set them.

`rwX` The permissions. One or more of `r` for read, `w` for write, and `X` for execute.

You can add, subtract, or set permissions using user category and permission pairs. For example, if you want to add the write permission for the members of a file's group, you would specify `chmod g+w file`.

```
$ ls -l sales.data
-rw-r--r-- 1 bob users 10400 Sep 27 08:52 sales.data
$ chmod g+w sales.data
$ ls -l sales.data
-rw-rw-r-- 1 bob users 10400 Sep 27 08:52 sales.data
```

Notice that after running `chmod g+w sales.data` the permissions string changed from `'-rw-r--r--'` to `'-rw-rw-r--'`. Remember that the permissions are displayed in the order of user, group, and other. The group permission set now includes the `w` symbol indicating that the write permission has been granted. Now the owner of the file (`bob`) and members of the group (`users`) can read and write to the `sales.data` file. Here is the reverse. This is how you would subtract the write permission.

```
$ ls -l sales.data
-rw-rw-r-- 1 bob users 10400 Sep 27 08:52 sales.data
$ chmod g-w sales.data
$ ls -l sales.data
-rw-r--r-- 1 bob users 10400 Sep 27 08:52 sales.data
```

You can change more than one permission at a time. This time write and execute permissions are added for the file's group.

```
$ ls -l sales.data
-rw-r--r-- 1 bob users 10400 Sep 27 08:52 sales.data
$ chmod g+wx sales.data
```

```
$ ls -l sales.data
-rw-rwxr-- 1 bob users 10400 Sep 27 08:52 sales.data
```

You can even set permissions on different user categories simultaneously. Here is how to change permissions for the user and group. Notice that before running this command that the user already has the write permissions. Using + to add permissions does not negate any existing permissions, it just adds to them.

```
$ ls -l sales.data
-rw-r--r-- 1 bob users 10400 Sep 27 08:52 sales.data
$ chmod ug+wx sales.data
$ ls -l sales.data
-rwxrwxr-- 1 bob users 10400 Sep 27 08:52 sales.data
```

If you want to set different permissions for different user categories, you can separate the specifications with a comma. You can mix and match to produce the outcome you desire. Here is how you can specify `rx` for user while adding `x` for group.

```
$ ls -l sales.data
-rw-r--r-- 1 bob users 10400 Sep 27 08:52 sales.data
$ chmod u=rwx,g+x sales.data
$ ls -l sales.data
-rwxr-xr-- 1 bob users 10400 Sep 27 08:52 sales.data
```

If you want to set the file to be just readable by everyone, run `chmod a=r file`. When you use the equal sign (=) the permission are set to exactly what you specify. If you specify just read, then only read will be available regardless of any existing permissions.

```
$ ls -l sales.data
-rw-r--r-- 1 bob users 10400 Sep 27 08:52 sales.data
$ chmod a=r sales.data
$ ls -l sales.data
-r--r--r-- 1 bob users 10400 Sep 27 08:52 sales.data
```

If you do not specify permissions following the equal sign, the permissions are removed. Here is an illustration of this behaviour

```
$ ls -l sales.data
-rw-r--r-- 1 bob users 10400 Sep 27 08:52 sales.data
$ chmod u=rwx,g=rx,o= sales.data
$ ls -l sales.data
-rwxr-x--- 1 bob users 10400 Sep 27 08:52 sales.data
```

Numeric Based Permissions

In addition to symbolic mode, octal mode can be used with `chmod` to set file and directory permissions. Understanding the concepts behind symbolic mode will help you learn octal mode. However, once you learn octal mode you may find that it is even quicker and easier to use than symbolic mode. Since there are only a few common and practical permission modes they can be readily memorized and recalled.

In octal mode permissions are based in binary. Each permission type is treated as a bit that is either set to off (0) or on (1). In permissions, order has meaning. Permissions are always in read, write, and execute order. If `r`, `w`, and `x` are all set to off, the binary representation is `000`. If they are all set to on, the binary representation is `111`. To represent read and execute permissions while omitting write permissions, the binary number is `101`.

r w x

0 0 0 Binary value for off

1 1 1 Binary value for on

r w x

0 0 0 Base 10 (decimal) value for off

4 2 1 Base 10 (decimal) value for on

To get a number that can be used with `chmod`, convert the binary representation into base 10 (decimal). The shortcut here is to remember that read equals 4, write equals 2, and execute equals 1. The permissions number is determined by adding up the values for each permission type. There are eight possible values from zero to seven, hence the name octal mode. This table demonstrates all eight of the possible permutations.

Octal Binary String Description

0	000	---	No permissions
1	001	--x	Execute only
2	010	-w-	Write only
3	011	-wx	Write and execute (2 + 1)
4	100	r--	Read only
5	101	r-x	Read and execute (4 + 1)
6	110	rw-	Read and write (4 + 2)

7 111 rwx Read, write, and execute (4 + 2 + 1)

Again, in permissions order has meaning. The user categories are always in user, group, and other order. Once you determine the octal value for each category you specify them in that order. For example, to get `-rwxr-xr--`, run `chmod 754 file`. That means the user (owner) of the file has read, write, and execute permission; the members of the file's group have read and execute permission; and others have read permissions.

	U	G	O
Symbolic	rwx	r-x	r--
Binary	111	101	100
Decimal	7	5	4

Commonly Used Permissions

Here are the most commonly used permissions. These five permissions will let you do just about anything you need to permissions wise.

Symbolic Octal Use Case / Meaning

<code>-rwx---</code> <code>---</code>	700	Ensures a file can only be read, edited, and executed by the owner. No others on the system have access.
<code>-rwxr--</code> <code>xr-x</code>	755	Allows everyone on the system to execute the file but only the owner can edit it.
<code>-rw-rw-</code> <code>r--</code>	664	Allows a group of people to modify the file and let others read it.
<code>-rw-rw-</code> <code>---</code>	660	Allows a group of people to modify the file and not let others read it.
<code>-rw-r--</code> <code>r--</code>	644	Allows everyone on the system to read the file but only the owner can edit it.

When you encounter `777` or `666` permissions, ask yourself "Is there a better way to do this?" "Does everybody on the system need write access to this?" For example, if a script or program is set to `777`, then anyone on the system can make changes to that script or program. Since the execute bit is set for everyone, that program can then be executed by anyone on system. If malicious code was inserted either on purpose or on accident it could cause unnecessary trouble. If multiple people need write access to a file consider using groups and limiting the access of others. It is good practice to avoid using `777` and `666` permission modes.

Working with Groups

If you work on the sales team and each member needs to update the `sales.report` file, you would set the group to `sales` using the `chgrp` command and then set the permissions to `664 (rw-rw-r--)`. You could even use `660 (rw-rw---)` permissions if you want to make sure only members of the sales team can read the report. Technically `774 (rwxrwxr--)` or `770 (rwxrwx---)` permissions work also, but since `sales.report` is not an executable program it makes more sense to use `664 (rw-rw-r--)` or `660 (rw-rw---)`.

When you create a file its group is set to your primary group. This behaviour can be overridden by using the `newgrp` command, but just keep in mind when you create a file it typically inherits your default group. In the following example Bob's primary group is `users`. Note that the format of the `chgrp` command is `chgrp GROUP FILE`.

```
$ nano sales.report
$ ls -l sales.report
-rw-r--r-- 1 bob users 6 Dec  4 20:41 sales.report
$ chgrp sales sales.report
$ ls -l sales.report
-rw-r--r-- 1 bob sales 6 Dec  4 20:41 sales.report
$ chmod 664 sales.report
$ ls -l sales.report
-rw-rw-r-- 1 bob sales 6 Dec  4 20:41 sales.report
```

Instead of keeping files in the home directories of various team members, it is easier to keep them in a location dedicated to the team. For example, you could ask the system administrator of the server to create a `/usr/local/sales` directory. The group should be set to `sales` and the permissions should be set to `775 (rwxrwxr-x)` or `770 (rwxrwx---)`. Use `770 (rwxrwx---)` if no one outside the sales team needs access to any files, directories, or programs located in `/usr/local/sales`.

```
$ ls -ld /usr/local/sales
drwxrwxr-x 2 root sales 4096 Dec  4 20:53 /usr/local/sales
$ mv sales.report /usr/local/sales/
$ ls -l /usr/local/sales
total 4
-rw-rw-r-- 1 bob sales 6 Dec  4 20:41 sales.report
```

Directory Permissions Revisited

This example demonstrates how permissions effect directories and their contents. A common problem is having proper permissions set on a file within a directory only to have the incorrect permissions on the directory itself. Not having the correct permissions on a directory can prevent the execution of the file, for example. If you are sure a file's permissions have been set correctly, look at the parent directory. Work your way towards the root of the directory tree by running `ls -ld .` in the current directory, moving up to the parent directory with `cd ..`, and repeating those two steps until you find the problem.

```
$ ls -dl directory/
drwxr-xr-x 2 bob users 4096 Sep 29 22:02 directory/
$ ls -l directory/
total 0
-rwxr--r-- 1 bob users 0 Sep 29 22:02 testprog
$ chmod 400 directory/
$ ls -dl directory/
dr----- 2 bob users 4096 Sep 29 22:02 directory/
$ ls -l directory/
ls: cannot access directory/testprog: Permission denied
total 0
-????????? ? ? ? ? ? ? testprog
$ directory/testprog
-su: directory/testprog: Permission denied
$ chmod 500 directory/
$ ls -dl directory/
dr-x----- 2 bob users 4096 Sep 29 22:02 directory/
$ ls -l directory/
total 0
-rwxr--r-- 1 bob users 0 Sep 29 22:02 testprog
$ directory/testprog
This program ran successfully.
$
```

Default Permissions and the File Creation Mask

The file creation mask is what determines the permissions a file will be assigned upon its creation. The mask restricts or masks permissions, thus determining the ultimate permission a file or directory will be given. If no mask were present directories would be created with 777 (rwxrwxrwx) permissions and files would be created with 666 (rw-rw-rw-) permissions. The mask can and is typically set by the system administrator, but it can be overridden on a per account basis by including a `umask` statement in your personal initialization files.

`umask [-S] [mode]` - Sets the file creation mask to mode if specified. If mode is omitted, the current mode will be displayed. Using the `-s` argument allows `umask` to display or set the mode with symbolic notation.

The mode supplied to `umask` works in the opposite way as the mode given to `chmod`. When you supply 7 to `chmod`, that is interpreted to mean all permissions on or rwx. When you supply 7 to `umask`, that is interpreted to mean all permissions off or ---. Think of `chmod` as turning on, adding, or giving permissions. Think of `umask` as turning off, subtracting, or taking away permissions.

A quick way to estimate what a `umask` mode will do to the default permissions is to subtract the octal `umask` mode from 777 in the case of directories and 666 in the case of files. Here is an example of a `umask 022` which is typically the default `umask` used by Linux distributions or set by system administrators.

	Dir	File
Base Permission	777	666
Minus Umask	-022	-022
	----	----
Creation Permission	755	644

Using a `umask` of 002 is ideal for working with members of your group. You will see that when files or directories are created the permissions allow members of the group to manipulate those files and directories.

	Dir	File
Base Permission	777	666
Minus Umask	-002	-002
	----	----
Creation Permission	775	664

Here is another possible `umask` to use for working with members of your group. Use 007 so that no permissions are granted to users outside of the group.

	Dir	File
Base Permission	777	666
Minus Umask	-007	-007

```
Creation Permission 770 660 *
```

Again, using this octal subtraction method is a good estimation. You can see that the method breaks down with the umask mode of `007`. In reality, to get an accurate result each time you need to convert the octal permissions into binary values. From there you use a bitwise NOT operation on the umask mode and then perform a bitwise AND operation against that and the base permissions.

It is fine to gloss over the subtleties here since there are only a few practical umask modes to use. They are `022`, `002`, `077`, and `007`. Save yourself the binary math homework and look at the following table containing all the resulting permissions created by each one of the eight mask permutations.

Octal Binary Dir Perms File Perms

0	000	rwX	rw-
1	001	rw-	rw-
2	010	r-x	r--
3	011	r--	r--
4	100	-wX	-w-
5	101	-w-	-w-
6	110	--X	---
7	111	---	---

Special Modes

Look at this output of `umask` when the mask is set to `022`.

```
$ umask  
0022
```

You will notice an extra leading `0`. So far you have only been dealing with three characters that represent permissions for user, group, and other. There is a class of special modes. These modes are `setuid`, `setgid`, and `sticky`. Know that these special modes are declared by prepending a character to the octal mode that you normally use with `umask` or `chmod`. The important point here is to know that `umask 0022` is the same as `umask 022`. Also, `chmod 644` is the same as `chmod 0644`.

Even though special modes will not be covered in this book, here they are for your reference. There are links at the end of this chapter so you can learn more about these modes if you are so inclined.

`setuid permission` - Allows a process to run as the owner of the file, not the user executing it.

`setgid permission` - Allows a process to run with the group of the file, not of the group of the user executing it.

`sticky bit` - Prevents a user from deleting another user's files even if they would normally have permission to do so.

umask Examples

Here are two examples of the effects umask modes have on file and directory creation.

```
$ umask
0022
$ umask -S
u=rwx,g=rx,o=rx
$ mkdir a-dir
$ touch a-file
$ ls -l
total 4
drwxr-xr-x 2 bob users 4096 Dec  5 00:03 a-dir
-rw-r--r-- 1 bob users    0 Dec  5 00:03 a-file
$ rmdir a-dir
$ rm a-file
$ umask 007
$ umask
0007
$ umask -S
u=rwx,g=rwx,o=
$ mkdir a-dir
$ touch a-file
$ ls -l
total 4
drwxrwx--- 2 bob users 4096 Dec  5 00:04 a-dir
-rw-rw---- 1 bob users    0 Dec  5 00:04 a-file
$
```

Free Training Videos on Linux Permissions

I know learning Linux permissions can be challenging. That's why I've recorded two videos that cover this subject in depth. In the videos I not only explain the concepts behind Linux permissions, but I also demonstrate them on an actual Linux server. Watching these will reinforce what you've learned in this chapter and hopefully clear up any confusion you might have. You can watch them here: <http://www.linuxtrainingacademy.com/perms/>

Deep Dive

- [Binary Number System](#) - There are only 10 kinds of people in the world: those who understand binary and those who don't.
- [Every Possible Unix/Linux Umask Mode](#) - An article that lists every possible `umask` mode.
- [Linux Permissions Explained Videos](#) - Watch these two videos that explain and demonstrate Linux file system permissions.
- [Modes](#) - Detailed permission information.
- [SELinux](#) - The official SELinux project page.
- [Special File Permissions](#) - An article describing `setuid`, `setgid`, and the sticky bit.
- [Ubuntu ACL Documentation](#) - ACL documentation that applies not only to Ubuntu, but to other Linux distributions as well.

Finding Files

If you ever need to locate a file or directory you can use the `find` command. It can be used to find files by name, size, permissions, owner, modification time, and more.

`find [path...] [expression]` - Recursively finds files in path that match expression. If no arguments are supplied it find all files in the current directory.

```
$ find
.
./profile
./bash_history
./PerformanceReviews
./PerformanceReviews/Fred
./PerformanceReviews/current
./PerformanceReviews/current/tps-report-violations.log
./PerformanceReviews/John
./sales.data
...
```

Here are some useful ways in which to use the `find` command.

`find . -name pattern` - Displays files whose name matches pattern. This is case sensitive.

`find . -iname pattern` - Same as `-name`, but ignores case.

`find . -ls` - Performs an `ls` on each of the found files or directories.

`find . -mtime num_days` - Finds files that are `num_days` old.

`find . -size num` - Finds files that are of size `num`.

`find . -newer file` - Finds files that are newer than `file`.

`find . -exec command {} \;` - Run command against all the files that are found.

Let's look at some examples. Let's say you are looking for a file or directory named "apache." You think it is in `/opt` somewhere and are not quite sure if it is "Apache" or "apache." You could provide `find` with the path of `/opt`, use `-iname` to ignore case, and look for "apache."

```
$ find /opt -iname apache
/opt/web/apache
```

To find all the files in `/usr/local` that end in "conf", you can use this command.

```
$ find /usr/local -name *conf
/usr/local/etc/dhcpd.conf
/usr/local/etc/httpd.conf
```

If you are looking for files that are more than 10 days old, but less than 13 days old in the current directory you can use this command.

```
$ find . -mtime +10 -mtime -13
./profile
./PerformanceReviews
./PerformanceReviews/John
./tpsreports
./tpsreports/coversheet.doc
```

Find files that start with an "s" and perform an `ls` on them.

```
$ find . -name "s*" -ls
52  11 -rw-r--r--  1 bob users 10400 Sep 27 08:52 ./sales.data
48   1 -rw-r--r--  1 bob users   35 Sep 27 08:47 ./tpsreports/sr.txt
53 112 -rw-r--r--  1 bob sales  2566 Sep 27 08:54 ./sales-lecture.mp3
```

The `-size` argument to `find` takes a number followed by a letter that represents the unit of space. Valid options are:

`c` for bytes

`k` for Kilobytes (units of 1024 bytes)

`M` for Megabytes (units of 1048576 bytes)

`G` for Gigabytes (units of 1073741824 bytes)

Here is an example of how to find files that are larger than 300 megabytes.

```
$ find . -size +300M
./PerformanceReviews/current/tps-report-violations.log
```

Here is how to find directories that are newer than a given file. In this case you are looking for directories that are newer than "b.txt."

```
$ find . -type d -newer b.txt
.
./PerformanceReviews
./PerformanceReviews/current
./tpsreports
```

On some occasions you may want to run a command against a list of files. You can use the `find` command with the `-exec` option to do this sort of thing. Use a pair of braces (`{}`) to act as a placeholder for the current file being processed. The command is terminated with the semicolon (`;`) character. You need to either escape or quote the semicolon like this `';`' or like this `\;`. If you want to run the command `file` `FILE_NAME` on every file in the current directory you would use the following command.

```
$ find . -exec file {} \;
.: directory
```

```
./profile: ASCII text
./bash_history: ASCII text
./PerformanceReviews: directory
./PerformanceReviews/Fred: directory
./PerformanceReviews/current: directory
./PerformanceReviews/current/tps-report-violations.log: ASCII text
./PerformanceReviews/John: empty
./sales.data: data
```

As you can see `find` is a really powerful tool and it has even more features than you have seen so far. Take a look at the man page or refer to the links at this end of this chapter.

Locate - A fast find

Every time you run the `find` command it evaluates each file and returns the appropriate response. This can be a slow process at times. For instance, if you are looking for a file on the system and cannot narrow its location down to a subdirectory you would run `find / -name something`. That command looks at each and every file on the system. If you know the file's name or at least part of its name and just want to know where it resides, the `locate` command is the right tool for that job.

`locate pattern` - List files that match pattern.

Once a day all the files on the system are indexed by a process called `updatedb`. When you run `locate` it is simply querying the index or database created by `updatedb` and not looking at each file on the system. This is really, really fast. The down side is that the data is not in real time. If you are trying to find a file you created just a few minutes ago, chances are it is not yet indexed and `locate` will not find it. Also, `locate` can potentially return a file that matches your search, but the file may have removed from the system since the index was last updated. On some servers `locate` is not installed or enabled, so your only choice may be to use `find`.

Here is what it looks like when `locate` is disabled.

```
$ locate bob
locate: /var/locatedb: No such file or directory
```

If it is enabled you will get a quick response to your queries. Notice that you do not need to know the entire file name, just a portion works.

```
$ locate tpsrep
/home/bob/tpsreports
/home/bob/tpsreports/coversheet.doc
/home/bob/tpsreports/sales-report.txt
```

Deep Dive

- [Find](#) - Ubuntu documentation on the find command.
- [Locate](#) - An article on the locate command.
- [The /etc/passwd file](#) - An article on the `/etc/passwd` file.

Viewing and Editing Files

Here are some simple commands that display the contents of files to the screen.

`cat file` - Display the entire contents of file.

`more file` - Browse through a text file. Press the `Spacebar` to advance to the next page. Press `Enter` to advance to the next line. Type `q` to quit viewing the file. Commands are based on the `vi` editor, which is covered in the next section.

`less file` - Like `more` but allows backward movement and pattern searches.

`head file` - Output the beginning (or top) portion of file.

`tail file` - Output the ending (or bottom) portion of file.

This is how you might examine a file named `file.txt` with the commands `cat`, `tail`, and `more`.

```
$ cat file.txt
This is the first line.
This is the second.
Here is some more interesting text.
Knock knock.
Who's there?
More filler text.
The quick brown fox jumps over the lazy dog.
The dog was rather impressed.
Roses are red,
Violets are blue,
All my base are belong to you.
Finally, the 12th and last line.
$ head file.txt
This is the first line.
This is the second.
Here is some more interesting text.
Knock knock.
Who's there?
More filler text.
The quick brown fox jumps over the lazy dog.
The dog was rather impressed.
Roses are red,
Violets are blue,
$ tail file.txt
Here is some more interesting text.
Knock knock.
Who's there?
More filler text.
The quick brown fox jumps over the lazy dog.
The dog was rather impressed.
```

```
Roses are red,  
Violets are blue,  
All my base are belong to you.  
Finally, the 12th and last line.  
$ more file.txt  
Here is some more interesting text.  
Knock knock.  
Who's there?  
More filler text.  
...  
$
```

By default `head` and `tail` only display ten lines. You can override this behavior and tell them to display a specified number of lines. The format is `-n` where `n` is the number of lines you want to display. If you only want to display the first line of a file use `head -1 file`. Want to display the last three lines? Then run `tail -3 file`.

```
$ head -2 file.txt  
This is the first line.  
This is the second.  
$ tail -1 file.txt  
Finally, the 12th and last line.  
$
```

Viewing Files In Real Time

Using `cat` can be a fine way to view files that have fairly static content. However, if you are trying to keep up with changes that are being made in real time to a file, `cat` is not the best choice. A good example of files that can change often and rapidly are log files. For example, you may need to start a program and look at that program's log file to see what it is doing. For this case, use the `tail -f file` command.

`tail -f file` - Follow the file. Displays data as it is being written to the file.

```
$ tail -f /opt/app/var/log.txt
Oct 10 16:41:17 app: [ID 107833 user.info] Processing request 768068
Oct 10 16:42:28 app: [ID 107833 user.err] User pat denied access to :
...
```

Editing Files

Nano

If you need to edit a file right now and do not want to spend any time learning obscure editor commands, use `nano`. `Nano` is a clone of `pico`, so if for some reason the `nano` command is not available, `pico` probably is. It's not as powerful as some other editors, but it's definitely easier to learn.

When you start `nano` you will see the file's contents and a list of commands at the bottom of the screen. To run the commands, replace the caret symbol (^) with the `Ctrl` key. For example, to exit `nano` type `Ctrl-x`.

```
GNU nano 2.0.6           File: file.txt

This is the first line.
This is the second.
Here is some more interesting text.
Knock knock.
Who's there?
More filler text.
The quick brown fox jumps over the lazy dog.
The dog was rather impressed.
Roses are red,
Violets are blue,
All my base are belong to you.
Finally, the 12th and last line.

[ Read 12 lines ]
^G Get Help  ^O WriteOut  ^R Read File  ^Y Prev Page  ^K Cut Text   ^C Cur Pos
^X Exit      ^J Justify   ^W Where Is  ^V Next Page  ^U UnCut Text ^T To Spell
```

picture alt

Editing in `nano` is quite easy. The up and down arrow keys will take you to the previous or next lines as expected. The right and left arrow keys let you navigate forwards and backwards on the same line. Simply type the desired text into the editor. To save the file, type `Ctrl-o`. If you forget to save the file before you exit, `nano` will ask you if you want to save the file. To learn more type `Ctrl-g` for help.

vi

While `nano` is great for simple edits, `vi` and `emacs` have more advanced and powerful features. There is a learning curve to using these editors as they are not exactly intuitive. It will require a bit of a time investment to become proficient. Let's start by

looking at `vi`.

`vi [file]` - Edit file.

`vim [file]` - Same as `vi`, but with more features.

`view [file]` - Starts `vim` in read-only mode. Use `view` when you want to examine a file but not make any changes.

`Vim` stands for "Vi IMproved." It is compatible with the commands found in `vi`. Some of the additional features of `vim` include syntax highlighting, the ability to edit files over the network, multi-level undo/redo, and screen splitting. On many Linux distributions when you invoke `vi`, you are actually running `vim`.

One advantage of knowing `vi` is that `vi` or a `vi` variant like `vim` is always available on the system. Another advantage is that once you learn the key mappings for `vi` you can apply them to other commands like `man`, `more`, `less`, `view`, and even your shell.

vi Modes

Command Mode

`vi` has the concept of modes. You are always working in one of three modes: command mode, insert mode, or line mode. When `vi` starts you are placed into command mode. To get back to command mode at any time hit the escape key (`ESC`). Letters typed while in command mode are not sent to the file, but are rather interpreted as commands. Command mode allows you to navigate about the file, perform searches, delete text, copy text, and paste text.

Here are some commonly used key bindings for navigation.

`k` - Up one line.

`j` - Down one line.

`h` - Left one character.

`l` - Right one character.

`w` - Right one word.

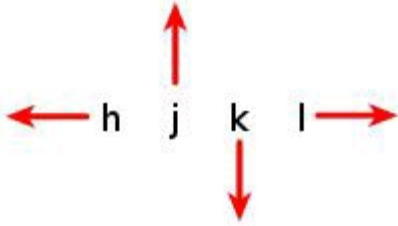
`b` - Left one word.

`^` - Go to the beginning of the line.

`§` - Go to the end of the line.

Note that commands are case sensitive. For example, if you want to move down one line type the lowercase `j`. The uppercase `J` joins lines together. The original `vi` editor did not employ the use of arrow keys, however `vim` does, so you may find that you can

use arrow keys on your system. The advantages of learning the original key bindings are 1) they always work and 2) it's faster since your hand does not have to leave the home row.



picture alt

Insert mode

To enter insert mode, press one of the following keys.

- i - Insert at the cursor position.
- I - Insert at the beginning of the line.
- a - Append after the cursor position.
- A - Append at the end of the line.

After entering into insert mode, type the desired text. When you are finished, type `ESC` to return to command mode.

Line mode

To enter line mode you must start from command mode and then type a colon (`:`) character. If you are in insert mode, type `ESC` to get back to command mode and then type a colon for line mode. Here are some of the most common line mode commands you will want to know.

- `:w` - Writes (saves) the file.
- `:w!` - Forces the file to be saved even if the write permission is not set. This only works on files you own.
- `:q` - Quit. This will only work if there have not been any modifications to the file.
- `:q!` - Quit without saving changes made to the file.
- `:wq!` - Write and quit. After modifying a file this command ensures it gets saved and closes `vi`.
- `:x` - Same as `:wq`.
- `:n` - Positions the cursor at line `n`. For example, `:5` will place the cursor on the fifth line in the file.

:`$` - Positions the cursor on the last line of the file.

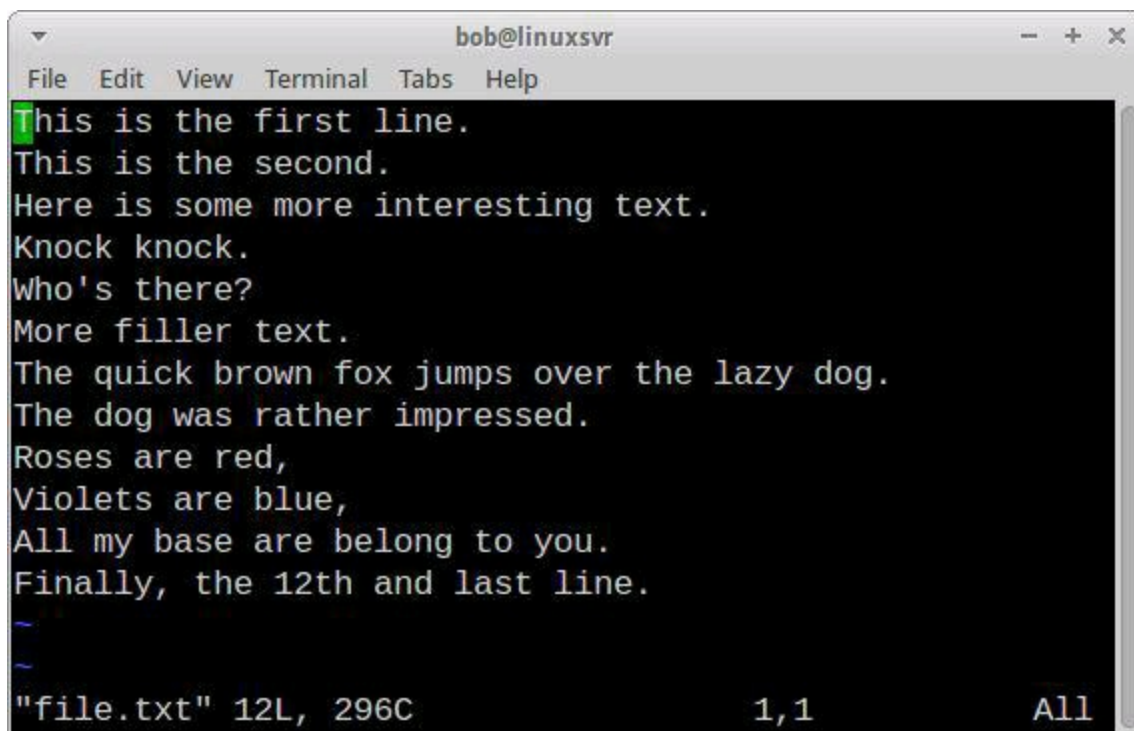
:`set nu` - Turn on line numbering.

:`set nonu` - Turn off line numbering.

:`help [subcommand]` - Get help. If you want more information on the `:w` command type `:help :w`.

Mode	Key	Description
Command	<code>Esc</code>	Used to navigate, search, and copy/paste text.
Insert	<code>i</code> <code>a</code> <code>A</code>	Also called text mode. Allows text to be inserted in the file.
Line	<code>:</code>	Also called command-line mode. Save the file, quit <code>vi</code> , replace text, and perform some navigation.

Here is a screenshot of `vim`. Tildes (`~`) represent lines beyond the end of the file.



```
bob@linuxsvr
File Edit View Terminal Tabs Help
This is the first line.
This is the second.
Here is some more interesting text.
Knock knock.
Who's there?
More filler text.
The quick brown fox jumps over the lazy dog.
The dog was rather impressed.
Roses are red,
Violets are blue,
All my base are belong to you.
Finally, the 12th and last line.
~
~
"file.txt" 12L, 296C          1,1          All
```

picture alt

Advanced Editing with `vi`

You can repeat commands in `vi` by preceding them with a number. For instance, if you would like to move the cursor up 5 lines type `5k`. If you would like to insert a piece of text 80 times, type `80i` and start entering the text. Once you hit `Esc` to return to command mode the text you typed will be repeated 80 times. If you would like to make a line of asterisks, you could type `80i*Esc`. Can you start to see how `vi` is more

powerful than an editor like `nano`?

Deleting Text

`x` - Delete a character.

`dw` - Delete a word. To delete five words, type `d5w`. The repeating concept in `vi` shows up in many places.

`dd` - Delete a line. To delete 3 lines, type `3dd`.

`D` - Delete from the current position to the end of the line.

Changing Text

`r` - Replace the current character.

`cw` - Change the current word.

`cc` - Change the current line.

`c$` - Change the text from the current position to the end of the line.

`C` - Same as `c$`.

`~` - Reverses the case of a character.

Copying and Pasting

`yy` - Yank (copy) the current line.

`y<position>` - Yank the `<position>`. For example, to yank a word type `yw`. To yank three words type `y3w`.

`p` - Paste the most recent deleted or yanked text.

Undo / Redo

`u` - Undo.

`Ctrl-r` - Redo.

Searching

`/<pattern>` - Start a forward search for `<pattern>`.

`?<pattern>` - Start a reverse search for `<pattern>`.

Emacs

`Emacs` is another powerful editor. Some people really find themselves drawn to `vi` while others thoroughly enjoy using `emacs`. It's a bit of a rivalry in the Linux world, actually. Experiment with `emacs` and `vi` to see which one works for you. You can't make a bad choice as they are both great editors.

`emacs [file]` - Edit file.

When reading `emacs` documentation know that `C-<char>` means to hold down the `Ctrl` key while pressing `<char>`. For example, `C-h` means to hold down the `Ctrl` key while pressing the `h` key. If you see `C-h t`, that means to hold down `Ctrl` key while pressing the `h` key, release the `Ctrl` key and then type the letter `t`.

When you see `M-<char>`, that means hold down the "meta" key, which is the `Alt` key, while pressing `<char>`. You can also substitute the `Esc` key for the `Alt` key. So `M-f` translates to holding down the `Alt` key and pressing `f` or pressing and releasing `Esc` followed by typing the `f` key. You may need to use `Esc` for the meta key since `Alt` may be intercepted by your terminal program, for instance. If you want to simplify things, always use `Esc` for the meta key as it will work in all situations.

Here are some helpful `emacs` commands.

`C-h` - Help.

`C-x C-c` - Exit. While holding down `Ctrl` press `x`, continue to hold down `Ctrl` and press `c`.

`C-x C-s` - Save the file.

`C-h t` - Emacs has a nice built-in tutorial.

`C-h k <key>` - Describe key. Use this to get help on a specific key command or key combination.

Navigating

`C-p` - Previous line.

`C-n` - Next line.

`C-b` - Backward one character.

`C-f` - Forward one character.

`M-f` - Forward one word.

`M-b` - Backward one word.

`C-a` - Go to the beginning of the line.

`C-e` - Go to the end of the line.

`M-<` - Go to the beginning of the file.

`M->` - Go to the end of the file.

Deleting Text

C-d - Delete a character.

M-d - Delete a word.

Copying and Pasting

C-k - Kill (cut) the rest of the current line of text. To kill the entire line, position the cursor at the beginning of the line.

C-y - Yank (or paste) from the previously killed text.

C-x u - Undo. Keep repeating for multi-level undo.

Searching

C-s - Start a forward search. Type the text you are looking for. Press C-s again to move to the next occurrence. Press Enter when you are done searching.

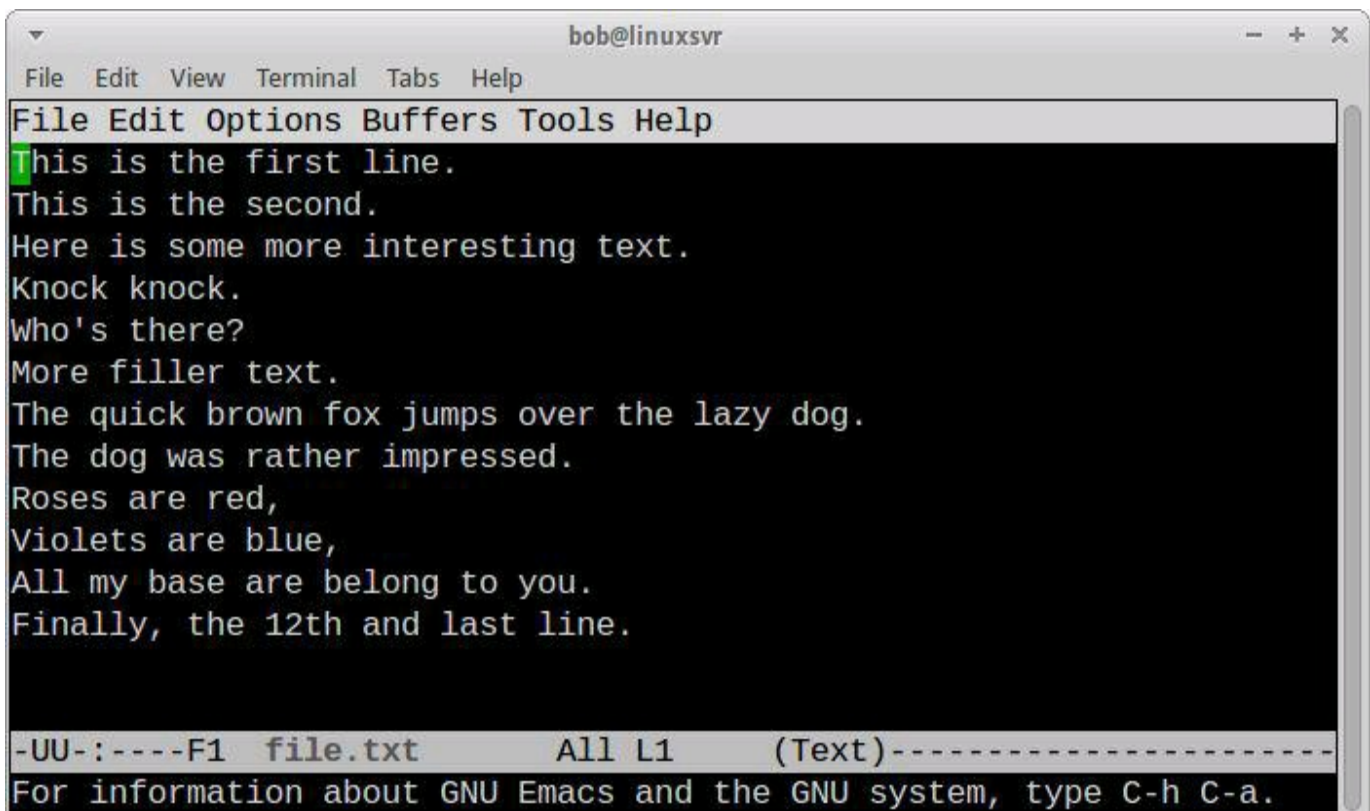
C-r - Start a reverse search.

Repeating

Like vi, emacs provides a way to repeat a command.

C-u N <command> - Repeat <command> N times.

For instance, to kill three lines of text type Ctrl-U 3 Ctrl-k.



picture alt

You have only scratched the surface with the `vi` and `emacs` editors. There is so much more to learn if you are interested. Both editors have features that include macros, global replace, and more. Entire books have been written on each of these editors.

Graphical Editors

So far you have learned about command line editors that are appropriate to use when you connect to a server via `ssh`. However, if you are running Linux as a desktop operating system you might be interested in some graphical text editors and word processors. Here are some for your consideration.

- `emacs` - Emacs has a graphical mode, too.
- `gedit` - The default text editor for the Gnome desktop environment.
- `gvim` - The graphical version of `vim`.
- `kedit` - The default text editor for the KDE desktop environment.

If you are looking for a Microsoft Word replacement, consider [AbiWord](#) or [LibreOffice](#). LibreOffice not only includes a word processor, but it is a complete office suite with a spreadsheet program, a database, and presentation software.

If you are looking for a source code editor to aid in computer programming, look at [Geany](#), [jEdit](#), or [Kate](#). [Sublime Text](#) is another option. It is a commercial product that runs on Windows, Mac, and Linux.

Specifying a Default Editor

Some commands rely on the `$EDITOR` environment variable to tell them which program to use for editing. Since `cron`'s primary purpose is to schedule jobs, it delegates the task of editing files to another program. The `crontab -e` command invokes the editor specified by the `$EDITOR` environment variable. You can set `$EDITOR` in your personal initialization files to ensure your favorite editor is used, be it `nano`, `emacs`, `vi`, or something else.

```
$ echo $EDITOR  
vi
```

Deep Dive

- [All Your Base Are Belong To Us](#) - Explains a reference made in the example file.txt file.
- [Emacs How To](#) - An emacs tutorial.
- Emacs built-in tutorial - Start `emacs` and type `Ctrl-h t`.
- [The Beginner's Guide to Nano](#)
- [Vi tutorial](#)
- `vimtutor` - Run `vimtutor` from the command line start the vim tutorial.
- [Welcome Back to Shell](#) - The commands `more` and `less` are called pagers because they allow you to page through a file. You will learn more about them in the "[Welcome Back to Shell](#)" chapter.

Comparing Files

If you want to compare two files and display the differences you can use `diff`, `sdiff`, or `vimdiff`.

`diff file1 file2` - Compare two files.

`sdiff file1 file2` - Compare two files side by side.

`vimdiff file1 file2` - Highlight the differences between two files in the vim editor.

```
$ cat secret
site: facebook.com
user: bob
pass: Abee!
$ cat secret.bak
site: facebook.com
user: bob
pass: bee
$ diff secret secret.bak
3c3
< pass: Abee!
---
> pass: bee
$ sdiff secret secret.bak
site: facebook.com      site: facebook.com
user: bob               user: bob
pass: Abee!             | pass: bee
```

In the `diff` output, the text following the less-than sign (<) belongs to the first file. The text following the greater-than sign (>) belongs to the second file. The first line of the diff output provides some additional information. The first number represents line numbers from the first file and the second number represent lines from the second file. The middle character separating the line numbers will be a `c` meaning change, a `d` meaning deletion, or an `a` meaning an addition. In this example the third line of the first file is changed from "pass: Abee!" to the text on the third line in the second file which is "pass: bee."

In the `sdiff` output the pipe (`|`) character means that the text differs in the files on that line. You will also see the less-than sign (<) meaning that line only exists in the first file. The greater-than sign (>) means that line only exists in the second file.

Here is a screenshot of `vimdiff secret secret.bak` demonstrating how the changes are highlighted using color.

```
site: facebook.com
user: bob
pass: Abee!
secret
"secret.bak" 3L, 39C

site: facebook.com
user: bob
pass: bee
secret.bak
```

picture alt

Determining a File's Type

There are clues as to what a file might contain. For instance, some files will have extensions. If a file ends in `.txt`, it is probably a text file. If a file has execute permissions, it might be a program. An easy way to determine the type of a file is to run the `file` command against it.

`file file` - Display the file type.

```
$ file /etc/passwd
/etc/passwd: ASCII text
$ file *
bin: directory
bob.tar: POSIX tar archive
test.data: data
test.txt: ASCII English text
email-reports.sh: Bourne-Again shell script, ASCII text executable
```

Searching in Files

Searching for Text in ASCII Files

If you are looking for text within a file, use the `grep` command.

`grep pattern file` - Search for pattern in file.

`grep -v pattern file` - Invert match. Return lines from file that do not match pattern.

```
$ cat secret
site: facebook.com
user: bob
pass: Abee!
$ grep user secret
user: bob
$ grep o secret
site: facebook.com
user: bob
$ grep -v o secret
pass: Abee!
```

Here are some more common options to use with `grep`.

`grep -i` - Perform a search, ignoring case.

`grep -c` - Count the number of occurrences in a file.

`grep -n` - Precede output with line numbers from the file.

```
$ grep User secret
$ grep -i User secret
user: bob
$ grep -ci User secret
1
$ grep -ni User secret
2:user: bob
```

Searching For Text in Binary Files

If you run `grep` against a binary file, it will simply display whether or not that information was found in the file, but it will not display the surrounding text. To look at textual data within a binary file use the `strings` command.

`strings file` - Display printable strings in binary files.

```
$ grep -i john BlueTrain.mp3
Binary file BlueTrain.mp3 matches
$ strings BlueTrain.mp3 | grep -i john
John Coltrane
John Coltrane
$
```

Pipes

You will notice that two commands have been chained together with a vertical bar, also known as the pipe symbol. The pipe (`|`) means take the standard output from the preceding command and pass it as the standard input to the following command. If the first command displays error messages those will not be passed to the second command. Those error messages are called "standard error" output. You will learn how to manipulate standard error output in the "[Redirection](#)" chapter.

Also notice that in the first occurrence of the `grep` command the format of `grep -i pattern file` was used. In the second, the format of `grep -i pattern` was used. In the first format the input for `grep` came from `file`. In the second format the input for `grep` came from the preceding command via the pipe.

If you run `strings BlueTrain.mp3` a lot of text will be displayed on the screen. Instead of letting that text pass you by, you can feed it to `grep -i john` using a pipe. The result, as you can see, is that 'John Coltrane' was found twice in the `strings BlueTrain.mp3` output.

Pipes aren't limited to just two commands. You can keep chaining commands together until you get the desired result you are looking for. Let's feed the output from `grep` to `head -1` to limit the output to just one line.

```
$ strings BlueTrain.mp3 | grep -i john | head -1
John Coltrane
$
```

Let's say you only want to display the second word of the above output. You can use the `cut` command to accomplish that goal.

`cut [file]` - Cut out selected portions of file. If file is omitted, use standard input.

`cut -d delimiter` - Use delimiter as the field separator.

`cut -f N` - Display the Nth field.

To extract 'Coltrane' from 'John Coltrane', use a space as the delimiter (`-d ' '`) and print the second field (`-f 2`). The space was quoted since spaces are typically ignored by the shell. Single quotes or double quotes work the same in this situation.

```
$ strings BlueTrain.mp3 | grep -i john | head -1 | cut -d ' ' -f 2
Coltrane
$
```

You will find that there are many small commands that do just one thing well. Some examples are `awk`, `cat`, `cut`, `fmt`, `join`, `less`, `more`, `nl`, `pr`, `sed`, `seq`, `sort`, `tr`, and `uniq`. Let's take an example using some of those commands and chain them together

with pipes.

The `/etc/passwd` file contains a list of accounts on the system and information about those accounts. In this example, the goal is to find all of the users named "bob" listed in the `/etc/passwd` file and print them in alphabetical order by username in a tabular format. Here is one way you could do that.

```
$ grep bob /etc/passwd
bob:x:1000:1000:Bob:/home/bob:/bin/bash
bobdjr:x:1001:1000:Robert Downey:/home/bobdjr:/bin/bash
bobh:x:1002:1000:Bob Hope:/home/bobh:/bin/bash
bobs:x:1003:1000:Bob Saget:/home/bobs:/bin/bash
bobd:x:1004:1000:Bob Dylan:/home/bobd:/bin/bash
bobb:x:1005:1000:Bob Barker:/home/bobb:/bin/bash
$ grep bob /etc/passwd | cut -f1,5 -d:
bob:Bob
bobdjr:Robert Downey
bobh:Bob Hope
bobs:Bob Saget
bobd:Bob Dylan
bobb:Bob Barker
$ grep bob /etc/passwd | cut -f1,5 -d: | sort
bob:Bob
bobb:Bob Barker
bobd:Bob Dylan
bobdjr:Robert Downey
bobh:Bob Hope
bobs:Bob Saget
$ grep bob /etc/passwd | cut -f1,5 -d: | sort | sed 's:// /'
bob Bob
bobb Bob Barker
bobd Bob Dylan
bobdjr Robert Downey
bobh Bob Hope
bobs Bob Saget
$      grep      bob      /etc/passwd      |      cut      -f1,5      -
d: | sort | sed 's:// /' | column -t
bob      Bob
bobb      Bob      Barker
bobd      Bob      Dylan
bobdjr      Robert      Downey
bobh      Bob      Hope
bobs      Bob      Saget
```

The above example shows the step-by-step thought process of how to go from one set of output and pipe it as the input to the next command. If you need to perform this action often you could save the final command for later use. As you can see, this simple concept of piping makes Linux extremely powerful.

Pipe Output to a Pager

Another common use of pipes is to control how output is displayed to your screen. If a command produces a significant amount of output it can scroll off your screen before you have the chance to examine it. To control the output use a pager utility such as `more` or `less`. You've already used those commands directly on files, but keep in mind they can take redirected input too.

```
$ grep bob /etc/passwd | less
bob:x:1000:1000:Bob:/home/bob:/bin/bash
bobdjrx:x:1001:1000:Robert Downey:/home/bobdjrx:/bin/bash
bobhx:x:1002:1000:Bob Hope:/home/bobhx:/bin/bash
bobbx:x:1005:1000:Bob Barker:/home/bobbx:/bin/bash
...
$ ls -l /usr/bin | less
total 62896
-rwxr-xr-x 1 root root 35264 Nov 19 2012 [
-rwxr-xr-x 1 root root 96 Sep 26 20:28 2to3-2.7
-rwxr-xr-x 1 root root 96 Sep 25 18:23 2to3-3.2
-rwxr-xr-x 1 root root 16224 Mar 18 2013 a2p
-rwxr-xr-x 1 root root 55336 Jul 12 2013 ab
....
$ ps -ef | more
UID  PID  PPID  C  STIME  TTY  TIME  CMD
root   1    0    0  Jan08  ?    00:00:00  /sbin/init
root   2    0    0  Jan08  ?    00:00:00  [kthreadd]
root   3    2    0  Jan08  ?    00:00:01  [ksoftirqd/0]
root   6    2    0  Jan08  ?    00:00:00  [migration/0]
root   7    2    0  Jan08  ?    00:00:04  [watchdog/0]
...
$
```

Deleting, Copying, Moving, and Renaming Files

Removing Files

Eventually you will get tired of all the old files you created just laying around, cluttering up your home directory, and taking up precious space. To delete them, use the `rm` command.

`rm file` - Remove file.

`rm -r directory` - Remove the directory and its contents recursively. If you want to remove a directory with `rm`, you have to supply the `-r` argument.

`rm -f file` - Force removal and never prompt for confirmation.

Search patterns can be used to delete multiple files at once. It's a good idea to double check what you are going to remove with `ls` before you execute `rm`.

```
$ ls s*
sales-lecture.mp3 sales.data secret secret.bak
$ rm s*
$ ls -d .*
. .. .profile .bash_history
$ rm .*
rm: cannot remove `.`: Is a directory
rm: cannot remove `..`: Is a directory
$ ls -d .*
. ..
```

Note that `rm .*` will not remove `.` (this directory) and `..` (the parent directory).

Copying Files

To copy files, use the `cp` command. If you want to create a copy of a file you can run `cp source_file destination_file`. You can also copy a file, or a series of files, to a directory by using `cp file(s) dir`.

`cp source_file destination_file` - Copy `source_file` to `destination_file`.

`cp source_file1 [source_fileN ...] destination_directory` - Copy `source_files` to `destination_directory`.

`cp -i source_file destination_file` - Run `cp` in interactive mode. If the `destination_file` exists, `cp` will prompt you before it overwrites the file.

`cp -r source_directory destination` - Copy `source_directory` recursively to `destination`. If `destination` exists, copy `source_directory` into `destination`, otherwise create `destination` with the contents of `directory`.

```
$ cp file1 file2
$ mkdir dir
$ cp file1 file2 dir/
$ ls dir
file1 file2
$ rm dir/*
$ cp file1 file2 dir
$ cp -i file1 file2
overwrite file2? (y/n [n]) n
not overwritten
$ cp -r dir dir2
$ ls dir2
file1 file2
$ cp dir dir3
cp: dir is a directory (not copied).
$ mkdir dir3
$ cp -r dir dir2 dir3
$ ls dir3
dir dir2
$ tree dir3
dir3
├── dir
│   ├── file1
│   └── file2
└── dir2
    ├── file1
    └── file2
```

Moving and Renaming Files

The way to rename files or directories in Linux is to use the `mv` command. The `mv` command moves files from one location to another. This can be used to relocate files or directories and it can be used to rename them also.

`mv source destination` - Move files or directories. If destination is a directory, source will be moved into destination. Otherwise source will be renamed to destination.

`mv -i source destination` - Run `mv` in interactive mode. If the destination exists, `mv` will prompt you before it overwrites the file.

Look at the following examples. They should make it clear how the `mv` command behaves in various situations.

```
$ ls -F
dir/  dir2/  dir3/  file1  file2
$ mv dir firstdir
$ ls -F
dir2/  dir3/  file1  file2  firstdir/
$ mv file1 file1.renamed
$ ls -F
dir2/  dir3/  file1.renamed  file2  firstdir,
$ mv file1.renamed firstdir/
$ ls -F
dir2/  dir3/  file2  firstdir/
$ ls -F firstdir/
file1  file1.renamed  file2
$ cat firstdir/file1
This text started out in file1.
$ cat firstdir/file2
This text started out in file2.
$ mv firstdir/file1 firstdir/file2
$ cat firstdir/file2
This text started out in file1.
$ ls -F firstdir/
file1.renamed  file2
$ mv -i firstdir/file1.renamed firstdir/file2
overwrite firstdir/file2? (y/n [n]) n
not overwritten
$
```

In the above example, a directory was renamed with `mv dir firstdir`. Next, a file was renamed with `mv file file1.renamed`. Next `file1.renamed` was relocated to the `firstdir` directory with the `mv file1.renamed firstdir/` command. A file was overwritten with the `mv firstdir/file1 firstdir/file2` command. If you want to be prompted before a file is overwritten use the `-i` option.

Sorting Data

You have already seen the `sort` command in use. In the simplest form it sorts lines of text alphabetically.

```
sort file - Sort text in file.
```

```
sort -k F file - Sort by key. The F following -k is the field number.
```

```
sort -r file - Sort in reverse order.
```

```
sort -u file - Sort text in file, removing duplicate lines.
```

```
$ cat more-secrets
tags: credentials
site: facebook.com
user: bob
pass: Abee!
tags: credentials
$ sort more-secrets
pass: Abee!
site: facebook.com
tags: credentials
tags: credentials
user: bob
$ sort -u more-secrets
pass: Abee!
site: facebook.com
tags: credentials
user: bob
$ sort -ru more-secrets
user: bob
tags: credentials
site: facebook.com
pass: Abee!
$ sort -u -k2 more-secrets
pass: Abee!
user: bob
tags: credentials
site: facebook.com
```

Creating a Collection of Files

If you want to bundle a group of files and/or directories together in an archive, you can use the `tar` command. You may want to create a copy or backup of a group of files. You may have several files you want to transfer at once or as a set. In these situations, `tar` can help.

```
tar [-] c|x|t f tarfile [pattern] - Create, extract or list contents of a tar archive using pattern, if supplied.
```

You will notice that `tar` does not require a hyphen (-) to precede its arguments. Traditionally the hyphen is excluded, but `tar` still works with it. If you see `tar cf file.tar` it is the same as `tar -cf file.tar`. Here is a look at some of the most commonly used `tar` options.

`c` - Create a tar archive.

`x` - Extract files from the archive.

`t` - Display the table of contents (list).

`v` - Causes `tar` to be verbose.

`f file` - The tar archive file to perform operations against.

In the following example `tar` is used to create (`tar cf tps.tar`) an archive, list the contents of the archive (`tar tf tps.tar`) and extract the contents (`tar xf tps.tar`).

```
$ tar cf tps.tar tpsreports/
$ tar tf tps.tar
tpsreports/
tpsreports/sales-report.txt
tpsreports/coversheet.doc
$ cd /tmp
$ tar xf /home/bob/tps.tar
$ ls tpsreports/
coversheet.doc sales-report.txt
$
```

If you would like to see the files that are getting placed into the archive or extracted from the archive, use `-v` to enable verbose mode.

```
$ tar cvf misc.tar sec* tpsreports
secret
secret.bak
tpsreports/
tpsreports/sales-report.txt
tpsreports/coversheet.doc
```

```
$ tar xvf /home/bob/misc.tar
secret
secret.bak
tpsreports/
tpsreports/sales-report.txt
tpsreports/coversheet.doc
```

Compressing Files To Save Space

`gzip file` - Compress file. The resulting compressed file is named `file.gz`.

`gunzip file` - Uncompress files.

`gzcat` or `zcat` - Concatenates and prints compressed files.

You can use the command `du` to display how much space is used by a file.

`du` - Estimates file usage.

`du -k` - Display sizes in Kilobytes.

`du -h` - Display sizes in human readable format. For example, 1.2M, 3.7G, etc.

Here are a couple of quick examples that demonstrate how to compress and uncompress files.

```
$ du -k data
15360 data
$ gzip data
$ du -k data.gz
26 data.gz
$ ls data*
data.gz
$ gunzip data.gz
$ ls data*
data
$ du -k misc.tar
10 misc.tar
$ gzip misc.tar
$ du -k misc.tar*
misc.tar.gz
$
```

Compressing Archives

In modern versions of the `tar` command `gzip` compression is built-in. If you want to create, extract, or list the contents of a compressed archive use the `-z` argument. As a matter of convention compressed tar files will end in either `.tar.gz` or `.tgz`. Here is how this looks.

```
$ tar zcf tps.tgz tpsreports
$ ls *.tgz
tps.tgz
$ tar ztf tps.tgz
tpsreports/
tpsreports/sales-report.txt
tpsreports/coversheet.doc
$
```

If you run across an older version of `tar` without `gzip` compression built-in, you can use pipes to create compressed archives. When a hyphen (-) is used in place of a file name that means to use standard output. Running the command `tar cf - pattern` will create an archive of "pattern" and send the output to standard output which is normally your screen. If you follow the command with a pipe that standard output will be used as the input for the next command following the pipe. To force `gunzip` to send its output to standard out, use the `-c` argument. With this in mind, here is how you can create, list, and extract a compressed archive using `tar`, `gzip`, and pipes.

```
$ tar cf - tpsreports | gzip > tps.tgz
$ ls *.tgz
tps.tgz
$ gunzip -c tps.tgz | tar tf -
tpsreports/
tpsreports/sales-report.txt
tpsreports/coversheet.doc
$ cd /tmp
$ gunzip -c /home/bob/tps.tgz | tar xf -
$ ls tpsreports/
coversheet.doc sales-report.txt
$
```

Redirection

You have already learned how to redirect output from one command and send it as input to another one by using pipes. In the previous example you saw another way to redirect output using the greater-than (>) sign. Let's take a closer look at I/O (input/output) redirection.

There are three default types of input and output. They are standard input, standard output, and standard error. By default, standard input comes from the keyboard and standard output and standard error are displayed to the screen. Each one of these I/O types is given a file descriptor. File descriptors are just numbers that represent open files. For humans it is easier for us to reference files by name, but it is easier for computers to reference them by number.

You may be thinking, "my keyboard isn't a file, nor is my screen." On one level that is true, but on another level it is not. Linux represents practically everything as a file. This abstraction allows you to do powerful things like take the standard output of one command that would normally be displayed to your screen and use it as input to another command. It's easier to run `cat file.txt | sort` than it is to type the entire contents of `file.txt` as the input to the `sort` command.

To demonstrate this concept, run `sort`, type in some text, and press `Ctrl-d` on a blank line. Here is how that looks.

```
$ sort
dddd
a
ccc
bb
<<<< Type Ctrl-d here >>>>
a
bb
ccc
dddd
$ cat file.txt
dddd
a
ccc
bb
$ cat file.txt | sort
a
bb
ccc
dddd
$
```

I/O Name Abbreviation File Descriptor Number

standard input	stdin	0
standard output	stdout	1
standard error	stderr	2

Use the greater-than sign (>) to redirect output and the less-than sign (<) to redirect input. The explicit way of using redirection is to provide a file descriptor number, however if it is omitted then file descriptor 0 is assumed for input redirection and 1 for output redirection.

> - Redirects standard output to a file, overwriting (truncating) any existing contents of the file. If no file exists, it creates one.

>> - Redirects standard output to a file and appends to any existing contents. If no file exists, it creates one.

< - Redirects input from a file to the command preceding the less-than sign.

```
$ ls -lF /opt/apache
drwxr-xr-x 2 root root 4096 Sep 14 12:21 2.4.5
drwxr-xr-x 2 root root 4096 Nov 27 15:43 2.4.7
lrwxrwxrwx 1 root root    5 Nov 27 15:43 current -> 2.4.7
-rw-r--r-- 1 root root 1048 Sep 14 12:58 README
$ ls -lF /opt/apache > files.txt
$ cat files.txt
drwxr-xr-x 2 root root 4096 Sep 14 12:21 2.4.5
drwxr-xr-x 2 root root 4096 Nov 27 15:43 2.4.7
lrwxrwxrwx 1 root root    5 Nov 27 15:43 current -> 2.4.7
-rw-r--r-- 1 root root 1048 Sep 14 12:58 README
$ ls -lF /opt/apache >> files.txt
$ cat files.txt
drwxr-xr-x 2 root root 4096 Sep 14 12:21 2.4.5
drwxr-xr-x 2 root root 4096 Nov 27 15:43 2.4.7
lrwxrwxrwx 1 root root    5 Nov 27 15:43 current -> 2.4.7
-rw-r--r-- 1 root root 1048 Sep 14 12:58 README
drwxr-xr-x 2 root root 4096 Sep 14 12:21 2.4.5
drwxr-xr-x 2 root root 4096 Nov 27 15:43 2.4.7
lrwxrwxrwx 1 root root    5 Nov 27 15:43 current -> 2.4.7
-rw-r--r-- 1 root root 1048 Sep 14 12:58 README
$ sort < files.txt
-rw-r--r-- 1 root root 1048 Sep 14 12:58 README
-rw-r--r-- 1 root root 1048 Sep 14 12:58 README
drwxr-xr-x 2 root root 4096 Nov 27 15:43 2.4.7
drwxr-xr-x 2 root root 4096 Nov 27 15:43 2.4.7
drwxr-xr-x 2 root root 4096 Sep 14 12:21 2.4.5
drwxr-xr-x 2 root root 4096 Sep 14 12:21 2.4.5
lrwxrwxrwx 1 root root    5 Nov 27 15:43 current -> 2.4.7
lrwxrwxrwx 1 root root    5 Nov 27 15:43 current -> 2.4.7
```

In the above examples `ls -lF /opt/apache > files.txt` is the same as `ls -lF /opt/apache 1> files.txt`. Also, `sort < files.txt` is the same as `sort 0< files.txt`. Do not use a space between the file descriptor number and the redirection operator. The file descriptor must immediately precede the redirection operator, otherwise it will be interpreted as another item on the command line.

```
$ ls -lF /opt/apache 1 > files.txt
ls: 1: No such file or directory
$ ls -lF /opt/apache 1> files.txt
$ sort 0 < files.txt
sort: open failed: 0: No such file or directory
$ sort 0< files.txt
-rw-r--r-- 1 root root 1048 Sep 14 12:58 README
-rw-r--r-- 1 root root 1048 Sep 14 12:58 README
drwxr-xr-x 2 root root 4096 Nov 27 15:43 2.4.7
drwxr-xr-x 2 root root 4096 Nov 27 15:43 2.4.7
drwxr-xr-x 2 root root 4096 Sep 14 12:21 2.4.5
drwxr-xr-x 2 root root 4096 Sep 14 12:21 2.4.5
lrwxrwxrwx 1 root root 5 Nov 27 15:43 current -> 2.4.7
lrwxrwxrwx 1 root root 5 Nov 27 15:43 current -> 2.4.7
$
```

Input and output redirection can be combined. This example shows `files.txt` being redirected as input for the `sort` command. The output of the `sort` command is then redirected to the `sorted_files.txt` file.

```
$ sort < files.txt > sorted_files.txt
$ cat sorted_files.txt
-rw-r--r-- 1 root root 1048 Sep 14 12:58 README
-rw-r--r-- 1 root root 1048 Sep 14 12:58 README
drwxr-xr-x 2 root root 4096 Nov 27 15:43 2.4.7
drwxr-xr-x 2 root root 4096 Nov 27 15:43 2.4.7
drwxr-xr-x 2 root root 4096 Sep 14 12:21 2.4.5
drwxr-xr-x 2 root root 4096 Sep 14 12:21 2.4.5
lrwxrwxrwx 1 root root 5 Nov 27 15:43 current -> 2.4.7
lrwxrwxrwx 1 root root 5 Nov 27 15:43 current -> 2.4.7
```

Standard Error

When a program encounters an error it reports its findings to standard error. File descriptor 1 is for standard output, 2 is for standard error. Remember that file descriptor 1 is the default file descriptor for output redirection. This can mean that not all of the output generated by a program is captured by default. Here is an example.

```
$ ls here not-here
ls: not-here: No such file or directory
here
$ ls here not-here > out
ls: not-here: No such file or directory
$ cat out
here
$ ls here not-here 2> out.err
here
$ cat out.err
ls: not-here: No such file or directory
$ ls here not-here 1> out 2> out.err
$ cat out
here
$ cat out.err
ls: not-here: No such file or directory
$
```

You will notice that when using `>` the error message was displayed to the screen and not redirected to the `out` file. To redirect the error messages you had to explicitly specify file descriptor 2 with `2>`. You can send standard output to one file while sending standard error to another file. You can use this to your advantage by having one file that contains known good output and another file that you can examine for errors.

If you want to capture both standard output and standard error, use `2>&1`. Normally with redirection a file follows the redirection operator. If you want to use a file descriptor instead of a file name, use the ampersand (`&`) symbol. So instead of redirecting standard error to a file (`2>out.err`), redirect it to standard output (`2>&1`). If you omit `&`, `1` will be treated as a file named `1`.

`&` - Used with redirection to signal that a file descriptor is being used instead of a file name.

`2>&1` - Combine standard error and standard output.

`2> file` - Redirect standard error to a file.

```
$ ls here not-here > out.both 2>&1
$ cat out.both
ls: not-here: No such file or directory
```

```
here  
$
```

The command, `ls here not-here > out.both 2>&1` means "send the standard output of `ls here not-here` to file the named `out.both` and append standard error to standard output." Since standard error is redirected to standard output and standard output is redirected to `out.both`, all output will be written to `out.both`.

Null Device

`>/dev/null` - Redirect output to nowhere.

If you want to ignore output, you can send it to the null device, `/dev/null`. The null device is a special file that throws away whatever is fed to it. You may hear people refer to it as the bit bucket. If you do not want to see errors on your screen and you do not want to save them to a file, you can redirect them to `/dev/null`.

```
$ ls here not-here 2> /dev/null
here
$ ls here not-here > /dev/null 2>&1
$
```

Deep Dive

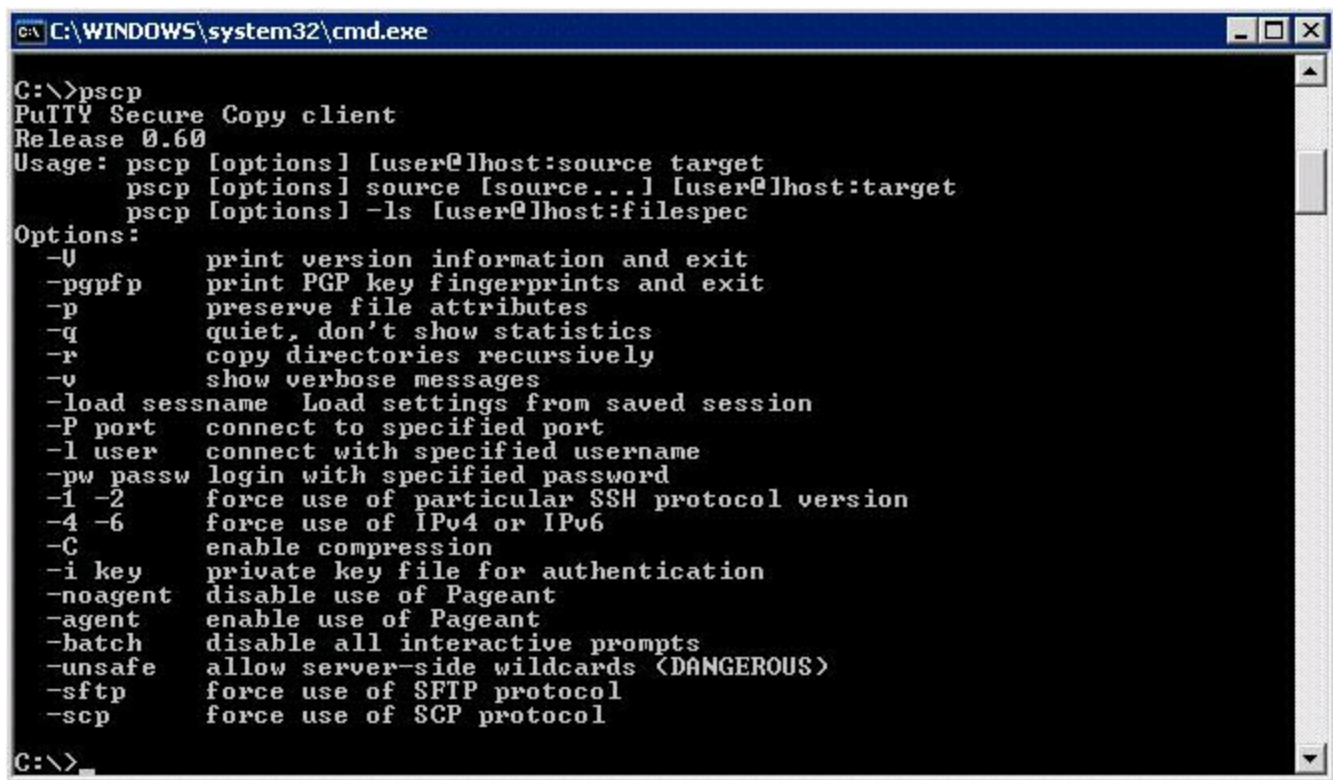
- [File Descriptors](#)
- [Here Documents](#)
- [Null Device](#)
- [Redirection](#)

Transferring and Copying Files

You already know how to copy files from one location to another on the same system using the `cp` command. But what if you want to copy files from your local workstation to a Linux server or between Linux servers? For that you can use SCP or SFTP.

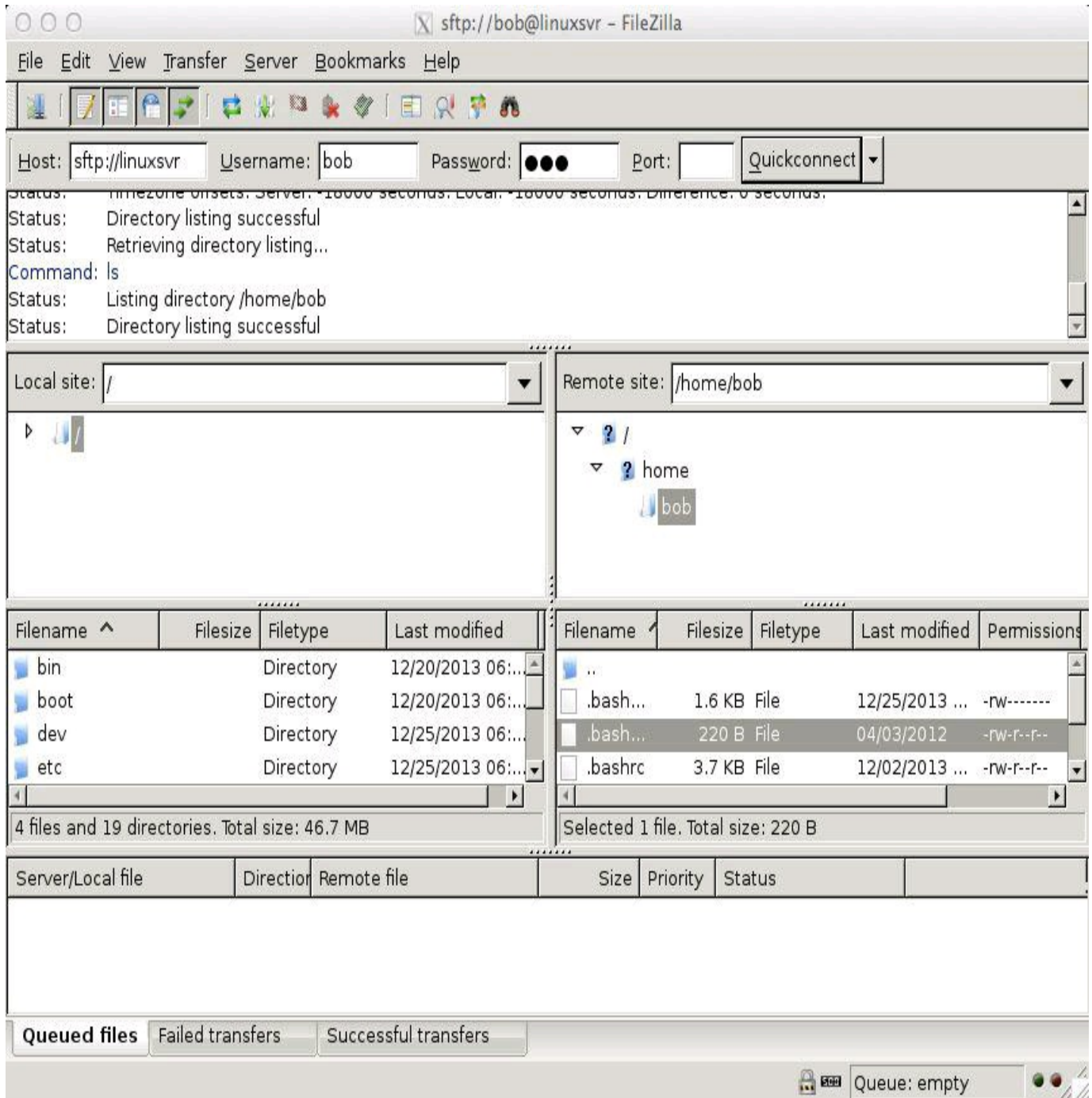
SCP is secure copy and SFTP is SSH file transfer protocol. Sometimes SFTP is referred to as secure file transfer protocol. SCP and SFTP are both extensions of the secure shell (SSH) protocol. This means that if you have SSH key authentication configured for SSH, it will also work with SCP and SFTP.

In order to use SCP or SFTP you need a client. Mac and Linux come with `scp` and `sftp` command line utilities. If you are running Windows, you can use the PuTTY Secure Copy Client (`pscp.exe`) and the PuTTY Secure File Transfer client (`psftp.exe`) programs. Command line utilities aren't your only option. There are graphical clients for each platform as well. Some run on Windows, Linux, and Mac like [FileZilla](#), while others only run on one platform like [WinSCP](#) for Windows.



```
C:\WINDOWS\system32\cmd.exe
C:\>pscp
PuTTY Secure Copy client
Release 0.60
Usage: pscp [options] [user@]host:source target
       pscp [options] source [source...] [user@]host:target
       pscp [options] -ls [user@]host:filespec
Options:
  -V          print version information and exit
  -pgpfp     print PGP key fingerprints and exit
  -p         preserve file attributes
  -q         quiet, don't show statistics
  -r         copy directories recursively
  -v         show verbose messages
  -load sessname Load settings from saved session
  -P port    connect to specified port
  -l user    connect with specified username
  -pw passw  login with specified password
  -1 -2     force use of particular SSH protocol version
  -4 -6     force use of IPv4 or IPv6
  -C         enable compression
  -i key     private key file for authentication
  -noagent   disable use of Pageant
  -agent     enable use of Pageant
  -batch     disable all interactive prompts
  -unsafe    allow server-side wildcards (DANGEROUS)
  -sftp     force use of SFTP protocol
  -scp      force use of SCP protocol
C:\>
```

picture alt



picture alt

`scp source destination` - Copy source to destination.

`sftp [username@]host` - Connect to host as username to begin a secure file transfer session.

If you are looking for a more interactive experience where you can examine the local and remote file systems, use SFTP. With SCP you need to know what files you want to transfer before using the command. Here is a sample SFTP session.

```
bobby@laptop:/tmp $ sftp bob@linuxsvr
```

```

bob@linuxsvr's password:
Connected to linuxsvr.
sftp> pwd
Remote working directory: /home/bob
sftp> ls -la
drwxr-xr-x    4 bob  bob   4096 Dec 25 19:00 .
drwxr-xr-x    4 root root  4096 Dec  2 22:01 ..
-rw-----    1 bob  bob    52 Dec 25 19:00 .Xauthority
-rw-----    1 bob  bob  1504 Dec 25 18:53 .bash_history
-rw-r--r--    1 bob  bob   220 Apr  3 2012 .bash_logout
-rw-r--r--    1 bob  bob  3655 Dec  2 22:02 .bashrc
-rw-r--r--    1 bob  bob   675 Apr  3 2012 .profile
drwx-----    2 bob  bob   4096 Dec 25 19:00 .ssh
sftp> lpwd
Local working directory: /tmp
sftp> lls
file1.txt
sftp> put file1.txt
Uploading file1.txt to /home/bob/file1.txt
file1.txt
sftp> ls
file1.txt
sftp> ls -la
drwxr-xr-x    4 bob  bob   4096 Dec 25 19:02 .
drwxr-xr-x    4 root root  4096 Dec  2 22:01 ..
-rw-----    1 bob  bob    52 Dec 25 19:00 .Xauthority
-rw-----    1 bob  bob  1504 Dec 25 18:53 .bash_history
-rw-r--r--    1 bob  bob   220 Apr  3 2012 .bash_logout
-rw-r--r--    1 bob  bob  3655 Dec  2 22:02 .bashrc
-rw-r--r--    1 bob  bob   675 Apr  3 2012 .profile
drwx-----    2 bob  bob   4096 Dec 25 19:00 .ssh
-rw-rw-r--    1 bob  bob    18 Dec 25 19:02 file1.txt
sftp> quit
bobby@laptop:/tmp $

```

Using `scp`, you can copy from your local system to a remote system, from a remote system to your local system, or from one remote system to another remote system. Here is how that looks.

```

bob@linuxsvr $ scp test.txt linuxsvr1:~/
test.txt      100%   35KB  35.3KB/s   00:00
bob@linuxsvr $ scp linuxsvr1:~/test.txt .
test.txt      100%   35KB  35.3KB/s   00:00
bob@linuxsvr $ scp linuxsvr1:~/test.txt linuxsvr2:/tmp/test-copy.txt
bob@linuxsvr $

```

SCP and SFTP aren't the only ways to transfer files to remote systems. Sometimes FTP (file transfer protocol) is enabled. In such cases you can use the built-in `ftp` command on Linux and Mac and a graphical client like WinSCP for windows. Just be aware that FTP is not using a secure transfer protocol like SCP and SFTP. This means

that your login credentials are sent in plain text over the network. Also, the files that you upload and download are not encrypted either. If given the choice between SCP/SFTP or FTP, use SCP/SFTP.

```
bobby@laptop:~$ ftp linuxsvr
Connected to linuxsvr.
220 ubuntu FTP server (Version 6.4) ready.
Name (linuxsvr:bobby): bob
331 Password required for bob.
Password:
230 User bob logged in.
Remote system type is UNIX.
Using binary mode to transfer files.
ftp> pwd
257 "/home/bob" is current directory.
ftp> quit
221 Goodbye.
```

If FTP is not enabled, you will see a "Connection refused" error message.

```
bobby@laptop:~$ ftp linuxsvr
ftp: connect: Connection refused
ftp> quit
bobby@laptop:~$
```

Deep dive

- [Connecting via SSH with Keys](#) - SSH key information covered earlier in this book.
- [Cyberduck](#) - FTP and SFTP client for Mac and Windows.
- [FileZilla](#) - FTP and SFTP client for Mac, Linux, and Windows.
- [FireFTP](#) - FTP and SFTP client Firefox that is Mac, Linux, and Windows compatible.
- [PuTTY](#)
 - [PSCP.EXE](#) - SCP client for Windows
 - [PSFTP.EXE](#) - SFTP client for Windows
- [Transmit](#) - FTP and SFTP client for Mac.
- [WinSCP](#) - FTP and SFTP client for Windows.

Welcome Back to Shell

Customizing the Prompt

As you have seen in the "[Welcome To Shell](#)" chapter, default prompts can vary from system to system. No matter what shell you are using, you can customize your prompt by setting an environment variable. For shells like `bash`, `ksh`, and `sh` the environment variable `PS1` is used to set the primary prompt string. The shells `csh`, `tcsh`, and `zsh` use the `prompt` environment variable. The format string you place in the environment variable determines the look and feel of your prompt. Each shell uses different format strings so consult the documentation for the shell that you are using.

Let's look at customizing the `bash` prompt since `bash` is the most popular default shell for user accounts on Linux systems. These are some of the commonly used formatting string options for `bash`. For a complete list refer to the man page.

`\d` - the date in "Weekday Month Date" format (e.g., "Tue May 26")

`\h` - the hostname up to the first '.'

`\H` - the hostname

`\n` - newline

`\t` - the current time in 24-hour HH:MM:SS format

`\T` - the current time in 12-hour HH:MM:SS format

`\@` - the current time in 12-hour am/pm format

`\A` - the current time in 24-hour HH:MM format

`\u` - the username of the current user

`\w` - the current working directory, with `$HOME` abbreviated with a tilde

`\W` - the basename of the current working directory, with `$HOME` abbreviated with a tilde

`\$` - if the effective UID is 0, a #, otherwise a \$

Here are some examples of changing the `bash` shell prompt by manipulating the `PS1` environment variable.

```
[bob@linuxsvr ~]$ echo $PS1
[\u@\h \w]\$
[bob@linuxsvr ~]$ PS1="\u@\h \$ "
bob@linuxsvr $ PS1="<\t \u@\h \w>\$ "
<16:42:58 bob@linuxsvr ~>$ cd /tmp
<16:43:02 bob@linuxsvr /tmp>$ PS1="\d \t \h \W>\$ "
Mon Nov 18 16:45:51 linuxsvr tmp>$ PS1="\t\n[\h \w]\$ "
16:46:47
```

```
[linuxsvr /tmp]$
```

To make your customized shell prompt persist between logins, add the PS1 value to your personal initialization files. Personal initialization files are commonly referred to as "dot files" since they begin with a dot or period.

```
$ echo 'export PS1="[\u@\h \w]\$ "' >> ~/.bash_profile
```

Creating Aliases

If you find yourself typing the same command over and over again, you can create a shortcut for it called an alias. An alias can be thought of as a text expander. Creating aliases for commands that are really long is also a common practice. For example, if you type `ls -l` frequently, you may want to abbreviate it to `ll`. As a matter of fact, this alias often comes predefined on many Linux distributions.

`alias [name[=value]]` - List or create aliases. If no arguments are provided the current list of aliases is displayed. Use `name=value` to create a new alias.

```
$ ls -l
total 4
-rw-r--r-- 1 bob bob 221 Nov 13 11:30 file.txt
$ alias ll='ls -l'
$ ll
total 4
-rw-r--r-- 1 bob bob 221 Nov 13 11:30 file.txt
$ alias
alias egrep='egrep --color=auto'
alias fgrep='fgrep --color=auto'
alias grep='grep --color=auto'
alias l='ls -CF'
alias la='ls -A'
alias ll='ls -l'
alias ls='ls --color=auto'
$
```

You can even use aliases to fix common typing errors. If you find yourself typing `grpe` when you intend to type `grep`, create an alias.

```
$ alias grpe='grep'
```

Aliases can be created to make your work environment similar to that of another platform. For instance, in Windows `cls` clears the screen, but in Linux the equivalent command is `clear`. If you are coming from an HP-UX background you are most likely familiar with the command `bdf` which displays disk usage. On Linux a very similar command is `df`. You could create these shortcuts to help you feel more at home.

```
$ alias cls='clear'
$ alias bdf='df'
```

Note that if you were to log out and log back in, your aliases would be lost. To make them persist between sessions add them to one of your personal initialization files (dot files) like `.bash_profile`.

The downside to creating several aliases is that when you are on a system that does not have your aliases you might feel lost. If you want to be able to work effectively on any system that you have access to, keep your alias usage to a minimum. Another way

to handle this situation is to copy your configuration files to each system that you work on.

Interactive vs Non-interactive Sessions

The shell behaves in slightly different ways when you log on interactively versus when you just connect to run a single command. Here is an example to better illustrate the difference between interactive and non-interactive shells.

Interactive:

```
mac:~ bob$ ssh linuxsvr
Last login: Thu Nov  7 01:26:37 UTC 2013
Welcome to Ubuntu 12.04.3 LTS

* Documentation:  https://help.ubuntu.com/

System info as of Nov 14 01:26:52 UTC 2013

System load:  0.42
Usage of /:   3.1% of 40GB
Memory usage: 32%
Swap usage:   0%
Processes:   89
Users logged in: 0
IP address for eth0: 10.0.0.7

bob@linuxsvr:~$ uptime
 11:49:16 up 97 days,  2:59,  5 users,  load average: 0.15, 0.25, 0.15

bob@linuxsvr:~$ ll
-rw-r--r-- 1 bob bob 221 Nov 13 11:30 file.txt
bob@linuxsvr:~$ exit
logout
Connection to 10.0.0.7 closed.
mac:~ bob$
```

Non interactive:

```
mac:~ bob$ ssh linuxsvr uptime
 11:49:16 up 97 days,  2:59,  5 users,  load average: 0.15, 0.25, 0.15
mac:~ bob$ ssh linuxsvr ll
bash: ll: command not found
mac:~ bob$
```

The contents of `.profile` or `.bash_profile` are only executed for interactive sessions. If you are not aware of this subtle difference it may leave you scratching your head as to why something works perfectly when you log in and type a command versus when you just ssh in to run that same command. For example, if you define an alias for `ll` in `~/.bash_profile` it will work during an interactive session but it will not be available during a non-interactive session.

You can save yourself some hassle by making your interactive and non-interactive

sessions behave the same. To do this, configure `.bash_profile` to reference `.bashrc` and put all of your configuration in `.bashrc`. You can read in the contents of another file by using the `source` command or dot operator.

`source filename` - Read and execute commands from `filename` and return. Any variables created or modified in `filename` will remain available after the script completes.

`. filename` - Same as `source filename`.

```
$ cat .bash_profile
# Put our settings in .bashrc so we have the same environment for login shells.
if [ -f ~/.bashrc ]; then
    source ~/.bashrc
fi
$ cat .bashrc
# use a vi-style line editing interface
set -o vi

# Set the prompt.
PS1="\u@\h \w]\$ "
export PS1

# Set the PATH.
PATH=$PATH:~/bin
export PATH

# Aliases
alias grpe='grep'
alias ll='ls -l'
alias utc='TZ=UTC date'
alias vi='vim'
```

Now the aliases you have defined are available during interactive and non-interactive sessions. Here is how the sessions behave after this change.

Interactive:

```
mac:~ bob$ ssh linuxsvr
Last login: Thu Nov  7 01:26:37 UTC 2013
Welcome to Ubuntu 12.04.3 LTS

* Documentation:  https://help.ubuntu.com/

System info as of Nov 14 01:26:52 UTC 2013

System load:  0.42
Usage of /:   3.1% of 40GB
Memory usage: 32%
Swap usage:   0%
```

```
Processes:          89
Users logged in:   0
IP address for eth0: 10.0.0.7
```

```
bob@linuxsvr:~$ ll
-rw-r--r-- 1 bob bob 221 Nov 13 11:30 file.txt
bob@linuxsvr:~$ exit
logout
Connection to 10.0.0.7 closed.
mac:~ bob$
```

Non interactive:

```
mac:~ bob$ ssh linuxsvr ll
-rw-r--r-- 1 bob bob 221 Nov 13 11:30 file.txt
mac:~ bob$
```

Comments

In the above examples you might have noticed the octothorpe (#) followed by some very human like text in the `~/.bash_profile` and `~/.bashrc` files. Any text that follows an octothorpe is ignored by the shell. This is a very common pattern that not only works for shells, but also for several computer programming languages. This construct allows comments and annotations to be used without effecting the execution of a program or script.

- Octothorpe. Also known as a hash, square, pound sign, or number sign. This symbol precedes comments.

```
$ # This does nothing.
$ This does something.
This: command not found
$ alias # Show my aliases.
alias egrep='egrep --color=auto'
alias fgrep='fgrep --color=auto'
alias grep='grep --color=auto'
alias l='ls -CF'
alias la='ls -A'
alias ll='ls -l'
alias ls='ls --color=auto'
$
```

Shell History

The shell keeps a record of the commands you have previously executed. Bash keeps its history in memory for the current session and in the `~/.bash_history` file so that it can be recalled during future sessions. Other shells may use `~/.history`, `~/.zsh_history`, or other similarly named files. Having access to your shell history is extremely useful because it allows you to quickly repeat commands. This can save you time, save keystrokes, prevent you from making mistakes by running a previously known good command, and generally speed up your work flow.

`history` - Display a list of commands in the shell history.

`!N` - Repeat command line number `N`.

`!!` - Repeat the previous command line.

`!string` - Repeat the most recent command starting with "string."

```
$ history
1 ls
2 diff secret secret.bak
3 history
$ !1
ls
PerformanceReviews tpsreports
$ echo $SHELL
/bin/bash
$ !!
echo $SHELL
/bin/bash
$ !d
diff secret secret.bak
3c3
< pass: Abee!
---
> pass: bee
$
```

With the exclamation mark history expansion syntax you can rerun a command by number. In the above example the first command in the history was executed with `!1`. If you want to execute the second command you would execute `!2`. Another convenient shortcut is `!-N` which means execute the `N`th previous command. If you want to execute the second to last command type `!-2`. Since `!!` repeats the most recent command, it is the same as `!-1`.

```
$ history
1 ls
2 diff secret secret.bak
3 history
```

```
$ !-2
diff secret secret.bak
3c3
< pass: Abee!
---
> pass: bee
$
```

By default bash retains 500 commands in your shell history. This is controlled by the `HISTSIZE` environment variable. If you want to increase this number add `export HISTSIZE=1000` or something similar to your personal initialization files.

`Ctrl-r` - Reverse search. Search for commands in your shell history.

You can search for commands in your history. For example, if you have the command `find /var/tmp -type f` in your shell history you could find it by typing `Ctrl-r fi` Enter. `Ctrl-r` initiates the reverse search and displays the search prompt, `fi` is the search string, and Enter executes the command that was found. You do not have to search for the start of the string. You could have very well searched for "var", "tmp", or "type."

```
$ find /var/tmp -type f
/var/tmp/file.txt
(reverse-i-search)`fi': find /var/tmp -type f
/var/tmp/file.txt
```

Tab Completion

Another way to increase your efficiency at the shell is by using tab completion. After you start typing a command you can hit the `Tab` key to invoke tab completion. `Tab` attempts to automatically complete partially typed commands. If there are multiple commands that begin with the string that precedes `Tab`, those commands will be displayed. You can continue to type and press `Tab` again. When there is only one possibility remaining, pressing the `Tab` key will complete the command.

`Tab` - Autocompletes commands and filenames.

```
$ # Typing who[Tab][Tab] results in:
$ who
who      whoami
$ # Typing whoa[Tab][Enter] results in:
$ whoami
bob
$
```

`Tab` completion not only works on commands, but it also works on files and directories. If you have files that start with a common prefix, `Tab` will expand the common component. For example, if you have two files named `file1.txt` and `file2.txt`, typing `cat f Tab` will expand the command line to `cat file`. You can then continue typing or press `Tab` twice to list the possible expansions. Typing `cat f Tab 2 Tab` will expand to `cat file2.txt`. After you experiment with tab completion it will soon become second nature.

```
$ # Typing cat f[Tab] results in:
$ cat file
$ # Typing: cat f[Tab][Tab][Tab] results in:
$ cat file
file1.txt  file2.txt
$ # Typing cat f[Tab] 2[Tab][Enter] results in:
$ cat file2.txt
This is file2!!!
$
```

Shell Command Line Editing

From time to time you will want to change something on your current command line. Maybe you noticed a spelling mistake at the front of the line or need to add an additional option to the current command. You may also find yourself wanting to recall a command from your shell history and modify it slightly to fit the current situation. Command line editing makes these types of activities possible.

Shells such as bash, ksh, tcsh, and zsh provide two command line editing modes. They are emacs, which is typically the default mode, and vi. Depending on the shell you can change editing modes by using the `set` or `bindkey` command. If you want to ensure your preferred mode is set upon login, add one of the two commands to your personal initialization files.

Shell	Emacs Mode	Vi Mode	Default mode
bash	<code>set -o emacs</code>	<code>set -o vi</code>	emacs
ksh	<code>set -o emacs</code>	<code>set -o vi</code>	none
tcsh	<code>bindkey -e</code>	<code>bindkey -v</code>	emacs
zsh	<code>bindkey -e</code>	<code>bindkey -v</code>	emacs
zsh	<code>set -o emacs</code>	<code>set -o vi</code>	emacs

Emacs Mode

As you would expect, in emacs command line editing mode you can use the key bindings found in the emacs editor. For example, to move to the beginning of the command line type `Ctrl-a`. To recall the previous command type `Ctrl-p`.

`Esc Esc` - Escape completion. Similar to tab completion.

`Ctrl-b` - Move cursor to the left (back)

`Ctrl-f` - Move cursor to the right (forward)

`Ctrl-p` - Up (Previous command line)

`Ctrl-n` - Down (Next command line)

`Ctrl-e` - Move to the end of the line

`Ctrl-a` - Move to the beginning of the line

`Ctrl-x Ctrl-e` - Edit the current command line in the editor defined by the `$EDITOR` environment variable.

See the section in this book on the [emacs editor](#) for more key bindings.

Vi Mode

When you are using vi command line editing mode you start in insert mode so you can

quickly type commands. To enter command mode, press `ESC`. To move to the previous command, for example, type `ESC k`. To resume editing enter insert mode by pressing `i`, `I`, `a`, or `A`.

`ESC` - Enter command mode.

Key bindings in command mode:

`\` - Vi style file completion. Similar to tab completion.

`h` - Move cursor left

`k` - Up (Previous command line)

`j` - Down (Next command line)

`l` - Move cursor right

`$` - Move to the end of the line

`^` - Move to the beginning of the line

`i` - Enter insert mode.

`a` - Enter insert mode, append text at current location.

`A` - Enter insert mode, append text at end of line.

`I` - Enter insert edit mode, prepend text to start of line.

`v` - Edit the current command line in the editor defined by the `$EDITOR` environment variable.

See the section in this book on the [vi editor](#) for more key bindings.

Dealing with Long Shell Commands

The backslash (\) is the line continuation character. You have learned how to use the backslash to escape special characters like spaces. However, when a backslash is placed at the end of a line it is used as a line continuation character. This allows you to create command lines that are displayed as multiple lines but are executed as a single command line by the shell. You can use line continuation to make commands more readable and easier to understand.

```
$ echo "one two three"
one two three
$ echo "one \
> two \
> three"
one two three
$ echo "onetwothree"
onetwothree
$ echo "one\
> two\
> three"
onetwothree
$
```

Notice the greater-than symbol (>) in the above example. It is the secondary prompt string and can be customized by changing the PS2 environment variable. You learned previously how to change the primary prompt string with PS1 in the [customizing the prompt](#) section of this book.

```
$ PS2="line continued: "
$ echo "one \
line continued: two \
line continued: three"
one two three
$
```

Environment Variables

You have already been introduced to environment variables and have put them to good use. To recap, an environment variable is a storage location that has a name and a value. They often effect the way programs behave. For example, you learned how to inform various programs about your preferred editor by defining the \$EDITOR environment variable.

Common Environment Variables

Variable	Description
EDITOR	The program to run to perform edits.
HOME	The Home directory of the user.
LOGNAME	The login name of the user.
MAIL	The location of the user's local inbox.
OLDPWD	The previous working directory.
PATH	A colon separated list of directories to search for commands.
PAGER	This program may be called to view a file.
PS1	The primary prompt string.
PWD	The present working directory.
USER	The username of the user.

Viewing Environment Variables

If you know the name of the environment variable that you want to examine, you can run `echo $VARIABLE_NAME` or `printenv VARIABLE_NAME`. If you want to examine all the environment variables that are set, use the `env` or `printenv` commands.

`printenv` - Print all or part of environment.

```
$ printenv HOME
/home/bob
$ echo $HOME
/home/bob
$ printenv
TERM=xterm-256color
SHELL=/bin/bash
USER=bob
PATH=/usr/local/bin:/usr/bin:/bin
MAIL=/var/mail/bob
PWD=/home/bob
LANG=en_US.UTF-8
HOME=/home/bob
```

```
LOGNAME=bob
$ env
TERM=xterm-256color
SHELL=/bin/bash
USER=bob
PATH=/usr/local/bin:/usr/bin:/bin
MAIL=/var/mail/bob
PWD=/home/bob
LANG=en_US.UTF-8
HOME=/home/bob
LOGNAME=bob
$
```

Exporting Environment Variables

When a process is started it inherits the exported environment variables of the process that spawned it. A variable that is set or changed only effects the current running process unless it is exported. The variables that are not exported are called local variables. The `export` command allows variables to be used by subsequently executed commands. Here is an example.

```
$ echo $PAGER

$ PAGER=less
$ echo $PAGER
less
$ bash
$ echo $PAGER

$ exit
exit
$ export PAGER=less
$ bash
$ echo $PAGER
less
$ exit
exit
$
```

In the above example `PAGER` was defined in the current environment. When you start a child process it inherits all the environment variables that were exported in your current environment. Since `PAGER` was not exported it was not set in the spawned bash shell. When you exported `PAGER` you saw that it was indeed available in the child process.

Removing Variables from the Environment

You can use `unset` to remove or delete an environment variable.

```
$ echo $PAGER  
less  
$ unset PAGER  
$ echo $PAGER  
  
$
```

Deep Dive

- [Bash it](#) - A framework for managing your bash configuration.
- [Command Line Completion](#) - Tab completion explained.
- [Configuration Files for Shell](#) - A list of files used to configure shell environments.
- [Dotfiles.org](#) - A place to upload, download, and share your dotfiles.
- [Dotfiles.github.io](#) - A guide to dotfiles on github.com.
- [Oh my ZSH](#) - A community-driven framework for managing your zsh configuration.
- Shells
 - [Bourne Shell](#)
 - [Bash](#)
 - [C Shell](#)
 - [Korn Shell](#)
 - [tcsh](#)
 - [Z Shell](#)
- [Using Bash History Interactively](#) - Official Bash history documentation.
- [Unix Shell](#) - An article on the shell user interface.

Processes and Job Control

Listing Processes and Displaying Information

To display the currently running processes use the `ps` command. If no options are specified, `ps` displays the processes associated with your current session. To see every process including ones that are not owned by you, use `ps -e`. To see processes running by a specific user, use `ps -u username`.

`ps` - Display process status.

Common `ps` options:

`-e` - Everything, all processes.

`-f` - Full format listing.

`-u username` - Display processes running as username.

`-p pid` - Display process information for pid. A PID is a process ID.

Common `ps` commands:

`ps -e` - Display all processes.

`ps -ef` - Display all processes.

`ps -eH` - Display a process tree.

`ps -e --forest` - Display a process tree.

`ps -u username` - Display processes running as username.

```
$ ps
  PID TTY          TIME CMD
19511 pts/2        00:00:00 bash
19554 pts/2        00:00:00 ps
$ ps -p 19511
  PID TTY          TIME CMD
19511 pts/2        00:00:00 bash
$ ps -f
UID          PID    PPID  C  STIME TTY          TIME CMD
bob          19511 19509  0   16:50 pts/2        00:00:00 -bash
bob          19556 19511  0   16:50 pts/2        00:00:00 ps -f
$ ps -e | head
  PID TTY          TIME CMD
    1 ?           00:00:02 init
    2 ?           00:00:00 kthreadd
    3 ?           00:00:19 ksoftirqd/0
    5 ?           00:00:00 kworker/0:0H
    7 ?           00:00:00 migration/0
    8 ?           00:00:00 rcu_bh
    9 ?           00:00:17 rcu_sched
   10 ?           00:00:12 watchdog/0
```

```

    11 ?          00:00:00 khelper
$ ps -ef | head
UID          PID    PPID  C  STIME TTY          TIME CMD
root         1      0   0 Dec27 ?          00:00:02 /sbin/init
root         2      0   0 Dec27 ?          00:00:00 [kthreadd]
root         3      2   0 Dec27 ?          00:00:19 [ksoftirqd/0]
root         5      2   0 Dec27 ?          00:00:00 [kworker/0:0H]
root         7      2   0 Dec27 ?          00:00:00 [migration/0]
root         8      2   0 Dec27 ?          00:00:00 [rcu_bh]
root         9      2   0 Dec27 ?          00:00:17 [rcu_sched]
root        10      2   0 Dec27 ?          00:00:12 [watchdog/0]
root        11      2   0 Dec27 ?          00:00:00 [khelper]
$ ps -fu www-data
UID          PID    PPID  C  STIME TTY          TIME CMD
www-data    941     938   0 Dec27 ?          00:00:00 /usr/sbin/apache2 -
k start
www-data    942     938   0 Dec27 ?          00:00:00 /usr/sbin/apache2 -
k start
www-data    943     938   0 Dec27 ?          00:00:00 /usr/sbin/apache2 -
k start

```

Here are other commands that allow you to view running processes.

`pstree` - Display running processes in a tree format.

`htop` - Interactive process viewer. This command is less common than `top` and may not be available on the system.

`top` - Interactive process viewer.

Running Processes in the Foreground and Background

Up until this point all the commands you have been executing have been running in the foreground. When a command, process, or program is running in the foreground the shell prompt will not be displayed until that process exits. For long running programs it can be convenient to send them to the background. Processes that are backgrounded still execute and perform their task, however they do not block you from entering further commands at the shell prompt. To background a process, place an ampersand (&) at the end of the command.

`command &` - Start command in the background.

`Ctrl-c` - Kill the foreground process.

`Ctrl-z` - Suspend the foreground process.

`bg [%num]` - Background a suspended process.

`fg [%num]` - Foreground a background process.

`kill [%num]` - Kill a process by job number or PID.

`jobs [%num]` - List jobs.

```
$ ./long-running-program &
[1] 22686
$ ps -p 22686
  PID TTY          TIME CMD
22686 pts/1    00:00:00 long-running-pr
$ jobs
[1]+  Running  ./long-running-program &
$ fg
./long-running-program
```

When a command is backgrounded two numbers are displayed. The number in brackets is the job number and can be referred by preceding it with the percent sign. The second number is the PID. Here is what it looks like to start multiple processes in the background.

```
$ ./long-running-program &
[1] 22703
$ ./long-running-program &
[2] 22705
$ ./long-running-program &
[3] 22707
$ ./long-running-program &
[4] 22709
$ jobs
[1]  Done          ./long-running-program
[2]  Done          ./long-running-program
```

```
[3]-  Running      ./long-running-program &
[4]+  Running      ./long-running-program &
```

The plus sign (+) in the `jobs` output represents the current job while the minus sign (-) represents the previous job. The current job is considered to be the last job that was stopped while it was in the foreground or the last job started in the background. The current job can be referred to by `%%` or `%+`. If no job information is supplied to the `fg` or `bg` commands, the current job is operated upon. The previous job can be referred to by `%-`.

You will notice that jobs number 1 and 2 are reported as being done. The shell does not interrupt your current command line, but will report job statuses right before a new prompt is displayed. For example, if you start a program in the background a prompt is returned. The shell will not report the status of the job until a new prompt is displayed. You can request a new prompt be displayed by simply hitting `Enter`.

To bring a job back to the foreground, type the name of the job or use the `fg` command. To foreground the current job execute `%%`, `%+`, `fg`, `fg %%`, `fg %+`, or `fg %num`. To foreground job number 3, execute `%3` or `fg %3`.

```
$ jobs
[3]-  Running      ./long-running-program &
[4]+  Running      ./long-running-program &
$ fg %3
./long-running-program
$
```

To pause or suspend a job that is running in the foreground, type `Ctrl-z`. Once a job is suspended it can be resumed in the foreground or background. To background a suspended job type the name of the job followed by an ampersand or use `bg` followed by the job name.

```
$ jobs
[1]   Running      ./long-running-program &
[2]-  Running      ./long-running-program &
[3]+  Running      ./another-program &
$ fg
./another-program
^Z
[3]+  Stopped      ./another-program
$ jobs
[1]   Running      ./long-running-program &
[2]-  Running      ./long-running-program &
[3]+  Stopped      ./another-program
$ bg %3
[3]+  ./another-program &
$ jobs
[1]   Running      ./long-running-program &
[2]-  Running      ./long-running-program &
```

```
[3]+  Running    ./another-program &  
$
```

You can stop or kill a background job using the `kill` command. For example, to kill job number 1 execute `kill %1`. To kill a job that is running in the foreground, type `Ctrl-c`.

```
$ jobs  
[1]  Running    ./long-running-program &  
[2]-  Running    ./long-running-program &  
[3]+  Running    ./another-program &  
$ kill %1  
[1]  Terminated ./long-running-program  
$ jobs  
[2]-  Running    ./long-running-program &  
[3]+  Running    ./another-program &  
$ fg %2  
./long-running-program  
^C  
$ jobs  
[3]+  Running    ./another-program &  
$
```

Killing Processes

`Ctrl-c` - Kills the foreground process.

`kill [signal] pid` - Send a signal to a process.

`kill -l` - Display a list of signals.

The default signal used by `kill` is termination. You will see this signal referred to as `SIGTERM` or `TERM` for short. Signals have numbers that correspond to their names. The default `TERM` signal is number 15. So running `kill pid`, `kill -15 pid`, and `kill -TERM pid` are all equivalent. If a process does not terminate when you send it the `TERM` signal, use the `KILL` signal which is number 9.

```
$ ps | grep hard-to-stop
27398 pts/1      00:00:00 hard-to-stop
$ kill 27398
$ ps | grep hard-to-stop
27398 pts/1      00:00:00 hard-to-stop
$ kill -9 27398
$ ps | grep hard-to-stop
$
```

Deep Dive

- [Bash Documentation on Job Control](#)

Scheduling Repeated Jobs with Cron

If you need to repeat a task on a schedule, you can use the cron service. Every minute the cron service checks to see if there are any scheduled jobs to run and if so runs them. Cron jobs are often used to automate a process or perform routine maintenance. You can schedule cron jobs by using the `crontab` command.

`cron` - A time based job scheduling service. This service is typically started when the system boots.

`crontab` - A program to create, read, update, and delete your job schedules.

A crontab (cron table) is a configuration file that specifies when commands are to be executed by cron. Each line in a crontab represents a job and contains two pieces of information: 1) when to run and 2) what to run. The time specification consists of five fields. They are minutes, hour, day of the month, month, and day of the week. After the time specification you provide the command to be executed.

Crontab Format

```
* * * * * command
| | | | |
| | | | +-- Day of the Week (0-6)
| | | +---- Month of the Year (1-12)
| | +----- Day of the Month (1-31)
| +----- Hour (0-23)
+----- Minute (0-59)
```

The command will only be executed when all of the time specification fields match the current date and time. You can specify that a command be run only once, but this is not the typical use case for cron. Typically, one or more of the time specification fields will contain an asterisk (*) which matches any time or date for that field. Here is an example crontab.

```
# Run every Monday at 07:00.
0 7 * * 1 /opt/sales/bin/weekly-report
```

Here is a graphical representation of the above crontab entry.

```
0 7 * * 1 /opt/sales/bin/weekly-report
| | | | |
| | | | +-- Day of the Week (0-6)
| | | +---- Month of the Year (1-12)
| | +----- Day of the Month (1-31)
| +----- Hour (0-23)
+----- Minute (0-59)
```

This job will run only when the minute is 0, the hour is 7, and the day of the week is 1. In the day of the week field 0 represents Sunday, 1 Monday, etc. This job will run on any day and during any month since the asterisk was used for those two fields.

If any output is generated by the command it is mailed to you. You can check your local mail with the `mail` command. If you would prefer not to get email you can redirect the output of the command as in this example.

```
# Run at 02:00 every day and send output to a log file.
0 2 * * * /opt/acme/bin/backup-db > /var/opt/acme/backup-db.log 2>&1
```

You can provide multiple values for each of the fields. If you would like to run a command every half-hour, you could do this.

```
# Run every 30 minutes.
0,30 * * * * /opt/acme/bin/half-hour-check

# Another way to do the same thing.
*/2 * * * * /opt/acme/bin/half-hour-check
```

Instead of using `0,30` for the minute field you could have used `*/2`. You can even use ranges with a dash. If you want to run a job every minute for the first four minutes of

the hour you can use this time specification: 0-4 * * * * command.

There are several implementations of the cron scheduler and some allow you to use shortcuts and keywords in your crontabs. Common keywords have been provided below, but refer to the documentation for cron on your system to ensure these will work.

Keyword	Description	Equivalent
@yearly	Run once a year at midnight in the morning of January 1	0 0 1 1 *
@annually	Same as @yearly	0 0 1 1 *
@monthly	Run once a month at midnight in the morning of the first day of the month	0 0 1 * *
@weekly	Run once a week at midnight in the morning of Sunday	0 0 * * 0
@daily	Run once a day at midnight	0 0 * * *
@midnight	Same as @daily	0 0 * * *
@hourly	Run once an hour at the beginning of the hour	0 * * * *
@reboot	Run at startup	N/A

Using the Crontab Command

Use the `crontab` command to manipulate cron jobs.

`crontab file` - Install a new crontab from file.

`crontab -l` - List your cron jobs.

`crontab -e` - Edit your cron jobs.

`crontab -r` - Remove all of your cron jobs.

```
$ crontab -l
no crontab for bob
$ cat my-cron
# Run every Monday at 07:00.
0 7 * * 1 /opt/sales/bin/weekly-report
$ crontab my-cron
$ crontab -l
# Run every Monday at 07:00.
0 7 * * 1 /opt/sales/bin/weekly-report
$ crontab -e
# $EDITOR is invoked.
$ crontab -r
$ crontab -l
no crontab for bob
$
```

Deep Dive

- [CronWTF](#) - Decodes crontab lines. Print out human readable output.
- [CronMaker](#) - A utility which helps you to build cron expressions.
- [Redirection](#) - A chapter on this book on I/O redirection.

Switching Users and Running Commands as Others

su

One way to start a session as another user on the system is to use the `su` command. If no arguments are supplied to `su`, it assumes you are trying to become the superuser. Executing `su` is the same as executing `su root`. Your current environment is passed to the new shell unless you specify a hyphen (-). In that case, `su` creates an environment like you would expect to see had you logged in as that user.

`su [username]` - Change user ID or become superuser

Common `su` options:

- - A hyphen is used to provide an environment similar to what the user would expect had the user logged in directly.

-c `command` - Specify a command to be executed. If the command is more than one word in length, it needs to be quoted.

```
bob@linuxsvr:~$ export TEST=1
bob@linuxsvr:~$ su oracle
Password:
oracle@linuxsvr:/home/bob$ echo $TEST
1
oracle@linuxsvr:/home/bob$ pwd
/home/bob
oracle@linuxsvr:/home/bob$ exit
exit
bob@linuxsvr:~$ su - oracle
Password:
oracle@linuxsvr:~$ echo $TEST

oracle@linuxsvr:~$ pwd
/home/oracle
oracle@linuxsvr:~$ exit
bob@linuxsvr:~$ su -c 'echo $ORACLE_HOME' oracle
Password:

bob@linuxsvr:~$ su -c 'echo $ORACLE_HOME' - oracle
Password:
/u01/app/oracle/product/current
bob@linuxsvr:~$
```

If you want to know what user you are working as, run the `whoami` command.

`whoami` - Displays the effective username.

```
$ whoami
bob
$ su oracle
Password:
$ whoami
```

oracle
\$

Sudo - Super User Do

Another way to switch users or execute commands as others is to use the `sudo` command. Sudo allows you to run programs with the security privileges of another user. Like `su`, if no username is specified it assumes you are trying to run commands as the superuser. This is why sudo is referred to as super user do. It is commonly used to install, start, and stop applications that require superuser privileges.

`sudo` - Execute a command as another user, typically the superuser.

One advantage of using `sudo` over the `su` command is that you do not need to know the password of the other user. This can eliminate the issues that arise from using shared passwords and generic accounts. When you execute the `sudo` command you are prompted for your password. If the sudo configuration permits access, the command is executed. The sudo configuration is typically controlled by the system administrator and requires root access to change.

Using Sudo

Here are the common ways to use the `sudo` command.

`sudo -l` - List available commands.

`sudo command` - Run command as the superuser.

`sudo -u root command` - Same as `sudo command`.

`sudo -u user command` - Run command as user.

`sudo su` - Switch to the superuser account.

`sudo su -` - Switch to the superuser account with an environment like you would expect to see had you logged in as that user.

`sudo su - username` - Switch to the username account with an environment like you would expect to see had you logged in as that user.

```
$ sudo -l
User bob may run the following commands on this host:
(root) NOPASSWD: /etc/init.d/apache2
(fred) NOPASSWD: /opt/fredApp/bin/start
(fred) NOPASSWD: /opt/fredApp/bin/stop
(root) /bin/su - oracle
$ sudo /etc/init.d/apache2 start
 * Starting web server apache2
$ sudo -u fred /opt/fredApp/bin/start
Fred's app started as user fred.
$ sudo su - oracle
[sudo] password for bob:
oracle@linuxsvr:~$ whoami
oracle
oracle@linuxsvr:~$ exit
$ whoami
bob
$
```

The output of `sudo -l` displays what commands can be executed with `sudo` and under which account. In the above example, `sudo` will not prompt for a password for the commands preceded with `NOPASSWD`. This type of configuration may be required to automate jobs via `cron` that require escalated privileges.

Deep Dive

- [The su command](#)
- [Sudo](#) - The official sudo website.
- [Ubuntu Sudo Documentation](#)

Installing Software

Typically when you install software on a Linux system you do so with a package. A package is a collection of files that make up an application. Additionally, a package contains data about the application as well as any steps required to successfully install and remove that application. The data, or metadata, that is contained within a package can include information such as the description of the application, the version of the application, and a list of other packages that it depends on. In order to install or remove a package you need to use superuser privileges.

A package manager is used to install, upgrade, and remove packages. Any additional software that is required for a package to function properly is known as a dependency. The package manager uses a package's metadata to automatically install the dependencies. Package managers keep track of what files belong to what packages, what packages are installed, and what versions of those packages are installed.

Installing Software on CentOS, Fedora, and RedHat Distributions

The `yum` command line utility is a package management program for Linux distributions that use the RPM package manager. CentOS, Fedora, Oracle Linux, RedHat Enterprise Linux, and Scientific Linux are RPM based distributions on which you can use `yum`.

`yum search search-string` - Search for search-string.

`yum install [-y] package` - Install package. Use the `-y` option to automatically answer yes to yum's questions.

`yum remove package` - Remove/uninstall package.

`yum info [package]` - Display information about package.

To search for software to install, use `yum search search-string`.

```
$ yum search inkscape
Loaded plugins: refresh-packagekit, security
===== N/S Matched: inkscape =====
inkscape-docs.i686 : Documentation for Inkscape
inkscape.i686 : Vector-based drawing program using SVG
inkscape-view.i686 : Viewing program for SVG files
```

Name and summary matches only, use "search all" for everything.
\$

To install software, use `yum install package`. Installing software requires superuser privileges. This means you need to use `sudo` or switch to the root account with the `su` command.

```
$ sudo yum install inkscape
[sudo] password for bob:
Loaded plugins: refresh-packagekit, security
Setting up Install Process
Resolving Dependencies
--> Running transaction check
---> Package inkscape.i686 0:0.47-6.el6 will be installed
--> Processing Dependency: python for package: inkscape-0.47-6.el6.i686
...
Dependencies Resolved
```

```
=====
Package      Arch      Version      Repository      Size
=====
Installing:
inkscape     i686      0.47-6.el6   base             8.6 M
```

```
Installing for dependencies:
 ImageMagick i686 6.5.4.7-7.el6_5 updates 1.7 M
...
```

Transaction Summary

=====

Install 21 Package(s)

Total download size: 21 M

Installed size: 97 M

Is this ok [y/N]: y

Downloading Packages:

(1/21): ImageMagick-6.5.4.7-7.el6_5.i686.rpm

...

Installed:

inkscape.i686 0:0.47-6.el6

Dependency Installed:

ImageMagick.i686 0:6.5.4.7-7.el6_5

...

Complete!

\$

To uninstall a package, use `yum remove`. Removing software requires superuser privileges.

\$ sudo yum remove inkscape

Loaded plugins: refresh-packagekit, security

Setting up Remove Process

Resolving Dependencies

--> Running transaction check

---> Package inkscape.i686 0:0.47-6.el6 will be erased

--> Finished Dependency Resolution

Dependencies Resolved

=====

Package	Arch	Version	Repository	Size
Removing:				
inkscape	i686	0.47-6.el6	@base	37 M

Transaction Summary

=====

Remove 1 Package(s)

Installed size: 37 M

Is this ok [y/N]: y

Downloading Packages:

Running rpm_check_debug

Running Transaction Test

Transaction Test Succeeded

```
Running Transaction
  Erasing      : inkscape-0.47-6.el6.i686    1/1
  Verifying    : inkscape-0.47-6.el6.i686    1/1
```

```
Removed:
  inkscape.i686 0:0.47-6.el6
```

```
Complete!
$
```

The rpm Command

In addition to the `yum` command, you can use the `rpm` command to interact with the package manager.

`rpm -qa` - List all the installed packages.

`rpm -qf /path/to/file` - List the package that contains file.

`rpm -ivh package.rpm` - Install a package from the file named `package.rpm`.

`rpm -ql package` - List all files that belong to package.

```
$ rpm -qa | sort | head
acl-2.2.49-6.el6.i686
acpid-1.0.10-2.1.el6.i686
aic94xx-firmware-30-2.el6.noarch
alsa-lib-1.0.22-3.el6.i686
alsa-plugins-pulseaudio-1.0.21-3.el6.i686
alsa-utils-1.0.22-5.el6.i686
anaconda-13.21.215-1.el6.centos.i686
anaconda-yum-plugins-1.0-5.1.el6.noarch
apache-tomcat-apis-0.1-1.el6.noarch
apr-1.3.9-5.el6_2.i686
$ rpm -qf /usr/bin/which
which-2.19-6.el6.i686
$ sudo rpm -ivh SpiderOak-5.0.3-1.i386.rpm
[sudo] password for bob:
Preparing...          ##### [100%]
 1:SpiderOak          ##### [100%]
$
```

Installing Software on Debian and Ubuntu

The Debian and Ubuntu distributions use a package manager called APT, the Advanced Packaging Tool. APT is comprised of a few small utilities with the two most commonly used ones being `apt-cache` and `apt-get`.

`apt-cache search search-string` - Search for search-string.

`apt-get install [-y] package` - Install package. Use the `-y` option to automatically answer yes to apt-get's questions.

`apt-get remove package` - Remove/uninstall package, leaving behind configuration files.

`apt-get purge package` - Remove/uninstall package, deleting configuration files.

`apt-cache show package` - Display information about package.

To search for software to install, use `apt-cache search search-string`.

```
$ apt-cache search inkscape
create-resources - shared resources for use by creative applications
inkscape - vector-based drawing program
python-scour - SVG scrubber and optimizer
fonts-opensin - Open DIN font
fonts-rufscript - handwriting-based font for Latin characters
ink-
generator - Inkscape extension to automatically generate files from a
lyx - document processor
robocut - Control program for Graphtec cutting plotters
sozi - inkscape extension for creating animated presentations
ttf-rufscript - handwriting-
based font for Latin characters (transitional dummy package)
$
```

To install software, use `apt-get install package`. Installing software requires superuser privileges. This means you need to use `sudo` or switch to the root account with the `su` command.

```
$ sudo apt-get install inkscape
Reading package lists... Done
Building dependency tree
Reading state information... Done
The following extra packages will be installed:
  aspell aspell-en cmap-adobe-japan1 dbus-x11
...
3 upgraded, 74 newly installed, 0 to remove and 96 not upgraded.
Need to get 62.7 MB of archives.
After this operation, 171 MB of additional disk space will be used.
Do you want to continue [Y/n]? y
...
```

```
Setting up perlmagick (8:6.6.9.7-5ubuntu3.2) ...
Processing triggers for libc-bin ...
ldconfig deferred processing now taking place
$
```

To uninstall a package, use `apt-get remove`. Removing software requires superuser privileges.

```
$ sudo apt-get remove inkscape
Reading package lists... Done
Building dependency tree
Reading state information... Done
The following packages will be REMOVED:
  inkscape
0 upgraded, 0 newly installed, 1 to remove and 96 not upgraded.
After this operation, 64.9 MB disk space will be freed.
Do you want to continue [Y/n]? y
(Reading database ... 69841 files and directories currently installed)
Removing inkscape ...
Processing triggers for man-db ...
Processing triggers for hicolor-icon-theme ...
$
```

The `dpkg` Command

In addition the `apt` utilities, you can use the `dpkg` command to interact with the package manager.

`dpkg -l` - List all the installed packages.

`dpkg -S /path/to/file` - List the package that contains file.

`dpkg -i package.deb` - Install a package from the file named `package.deb`.

`dpkg -L package` - List all files that belong to package.

```
$ dpkg -l | head
Desired=Unknown/Install/Remove/Purge/Hold
|   Status=Not/Inst/Conf-files/Unpacked/halF-conf/Half-inst/trig-
aWait/Trig-pend
|/ Err?=(none)/Reinst-required (Status,Err: uppercase=bad)
||/ Name          Version          Description
+++-+-----+-----+-----+
=====
ii          accountsservice 0.6.15-
2ubuntu9.6      query and manipulate user account information
ii          acpid            1:2.0.10-
1ubuntu3        Advanced Configuration and Power Interface event daemon
ii          adduser          3.113ubuntu2     add and remove users and
ii          apparmor         2.7.102-0ubuntu3.9 User-
space parser utility for AppArmor
ii          appport          2.0.1-
```

```
0ubuntu17.5          automatically generate crash reports for debugging
$ dpkg -S /usr/bin/which
debianutils: /usr/bin/which
$ sudo dpkg -i spideroak_5.1.3_i386.deb
[sudo] password for bob:
Selecting previously unselected package spideroak.
(Reading database ... 153942 files and directories currently installed.)
Unpacking spideroak (from spideroak_5.1.3_i386.deb) ...
Setting up spideroak (1:5.1.3) ...
Processing triggers for man-db ...
Processing triggers for desktop-file-utils ...
Processing triggers for bamfdaemon ...
Rebuilding /usr/share/applications/bamf.index...
Processing triggers for gnome-menus ...
$
```

Free Video on Installing Linux Software

If you would like to see exactly what it's like to install software on a Linux system, check out this video that I put together for you:
<http://www.linuxtrainingacademy.com/installing/>

Deep Dive

- [Managing Software with Yum](#)
- [AptGet Howto](#)
- [Ubuntu - Installing Software](#)
- [Installing Linux Software Video](#)

The End and the Beginning

Even though this is the end of this book, I sincerely hope that it is just the beginning of your Linux journey. Linux has been growing steadily in popularity since its release in 1991. You will find Linux running on phones, laptops, servers, supercomputers, industrial equipment, and even on medical devices. The possibilities for learning, exploring, and growing are endless.

About the Author

Jason Cannon started his career as a Unix and Linux System Engineer in 1999. Since that time he has utilized his Linux skills at companies such as Xerox, UPS, Hewlett-Packard, and Amazon.com. Additionally, he has acted as a technical consultant and independent contractor for small to medium businesses.

Jason has professional experience with CentOS, RedHat Enterprise Linux, SUSE Linux Enterprise Server, and Ubuntu. He has used several Linux distributions on personal projects including Debian, Slackware, CrunchBang, and others. In addition to Linux, Jason has experience supporting proprietary Unix operating systems including AIX, HP-UX, and Solaris.

He enjoys teaching others how to use and exploit the power of the Linux operating system. He blogs and teaches online video training courses at <http://www.LinuxTrainingAcademy.com>. Jason can be reached via email at jacannon@gmail.com.

Other Books by the Author

[Bash Command Line Pro Tips](http://www.linuxtrainingacademy.com/bash-pro-tips) <http://www.linuxtrainingacademy.com/bash-pro-tips>

[Command Line Kung Fu: Bash Scripting Tricks, Linux Shell Programming Tips, and Bash One-liners](http://www.linuxtrainingacademy.com/command-line-kung-fu-book) <http://www.linuxtrainingacademy.com/command-line-kung-fu-book>

[High Availability for the LAMP Stack: Eliminate Single Points of Failure and Increase Uptime for Your Linux, Apache, MySQL, and PHP Based Web Applications](#)

[The Linux Screenshot Tour Book: An Illustrated Guide to the Most Popular Linux Distributions](http://www.linuxtrainingacademy.com/screenshots) <http://www.linuxtrainingacademy.com/screenshots>

[Python Programming for Beginners](http://www.linuxtrainingacademy.com/python-programming-for-beginners) <http://www.linuxtrainingacademy.com/python-programming-for-beginners>

Additional Resources Including Exclusive Discounts for Linux for Beginners Readers

For even more resources, visit <http://www.linuxtrainingacademy.com/resources>.

Books

Linux for Beginners: <http://www.linuxtrainingacademy.com/linux> If you want to learn how to use Linux, but don't know where to start, then this is for you. Linux for Beginners doesn't make any assumptions about your background or knowledge of Linux. You need no prior knowledge to benefit from this book. You will be guided step by step using a logical and systematic approach. As new concepts, commands, or jargon are encountered they are explained in plain language, making it easy for anyone to understand.

Command Line Kung Fu: <http://www.linuxtrainingacademy.com/command-line-kung-fu-book> Do you think you have to lock yourself in a basement reading cryptic man pages for months on end in order to have ninja like command line skills? In reality, if you had someone share their most powerful command line tips, tricks, and patterns you'd save yourself a lot of time and frustration. This book does just that.

Python Programming for Beginners: <http://www.linuxtrainingacademy.com/python-programming-for-beginners> If you are interested in learning how to program, or Python specifically, this book is for you. In it you will learn how to install Python, which version to choose, how to prepare your computer for a great experience, and all the computer programming basics you'll need to know to start writing fully functional programs.

Scrum Essentials: <http://www.linuxtrainingacademy.com/scrum-book> This book will provide every team member, manager, and executive with a common understanding of Scrum, a shared vocabulary they can use in applying it, and practical knowledge for deriving maximum value from it. After reading Scrum Essentials you will know about scrum roles, sprints, scrum artifacts, and much more.

Courses

[High Availability for the LAMP Stack](#): Learn how to setup a highly available LAMP stack (Linux, Apache, MySQL, PHP). You'll learn about load balancing, clustering databases, creating distributed file systems, and more.

[Linux for Beginners](#): This is the online video training course based on this book. This course includes explanations as well as real-world examples on actual Linux systems. Visit <http://www.linuxtrainingacademy.com/lfb-udemy>.

[Learn Linux in 5 Days](#): Take just 45 minutes a day for the next 5 days and I will teach you exactly what you need to know about the Linux operating system. You'll learn the most important concepts and commands, and I'll even guide you step-by-step through several practical and real-world examples. Enroll now at <http://www.linuxtrainingacademy.com/linux-in-5-days>.

[Linux Alternatives to Windows Applications](#): If you ever wanted to try Linux, but were afraid you wouldn't be able to use your favorite software, programs, or applications, take this course. It's available at <http://www.linuxtrainingacademy.com/linux-alternatives>.

[LPI Level 1 / Exam 101 Training](#): This course provides interactive step-by-step videos that will help you prepare for the LPIC-1 101 Exam. This exam is important to help you prepare for the Linux+ and LPIC level 1 certification and this course provides all the materials you need to pass the exam. Visit <http://www.linuxtrainingacademy.com/lpi-course-1> to start on your certification now.

[LPI Level 1 / Exam 102 Training](#): This course provides interactive, step-by-step videos that will help you prepare for the LPIC-1 102 Exam. This exam is important to help you prepare for the Linux+ and LPIC level 1 certification and this course provides all the materials you need to pass the exam. Visit <http://www.linuxtrainingacademy.com/lpi-course-2> to start on your certification now.

[Python for Beginners](#): This comprehensive course covers the basics of Python as well as the more advanced aspects such as debugging and handling files. Enroll to gain access to all 13 chapters of this Python for Beginners course as well as labs and code files. Visit <http://www.linuxtrainingacademy.com/python-video-course> to level up your Python skills.

Cloud Hosting and VPS (Virtual Private Servers)

[Digital Ocean](#): Simple cloud hosting, built for developers. Deploy an SSD cloud server in just 55 seconds. Visit <http://www.linuxtrainingacademy.com/digitalocean> to get access to your own server for as little as \$5 a month.

Web Hosting with SSH and Shell Access

Bluehost: 99% of my websites are hosted on Bluehost. Why? Because it's incredibly easy to use with 1-click automatic WordPress installation and excellent customer service – via phone and via chat. I HIGHLY RECOMMEND using Bluehost for your first site. Also, you can use the same hosting account for multiple domains if you plan on creating more websites. Visit <http://www.linuxtrainingacademy.com/bluehost> to get a special discount off the regular price!

HostGator: If you want an alternative to Bluehost, check out HostGator. It comes with a 99.9% uptime guarantee and includes a free site builder. They provide customer support 24 hours a day, seven days a week and even provide a 45 day money-back guarantee. Visit <http://www.linuxtrainingacademy.com/hostgator> to learn more.

Appendices

Appendix A: Abbreviations and Acronyms

ACL - access control list

APT - advanced packaging tool (apt)

ASCII - American Standard Code for Information Interchange

CentOS - Community ENTerprise Operating System

cd - Change directory

CLI - command line interface

crontab - cron table

dir - directory

distro - Distribution, a collection of user programs, software, and the Linux kernel to create an operating environment.

FOSS - free open source software

FTP - file transfer protocol

GID - group identification

GB - gigabyte

GNU - GNU's Not UNIX. (See [GNU.org](http://www.gnu.org))

GUI - graphical user interface

HP - Hewlett-Packard

IBM - International Business Machines

KB - kilobyte

I/O - input/output

LFS - Linux from scratch. (See <http://www.linuxfromscratch.org/>)

LSB - Linux Standard Base

LUG - Linux user group

LVM - logical volume management

MB - megabyte

MBR - master boot record

NFS - network file system

NTP - network time protocol
OS - operating system
PID - process identification number
POSIX - portable operating system interface
pwd - present working directory
RHEL - RedHat Enterprise Linux
RHCE - Red Hat Certified Engineer
RPM - RedHat Package Manager
SAN - storage area network
SELinux - Security Enhanced Linux
SFTP - secure file transfer protocol or SSH file transfer protocol
SGID - set group ID
SLES - SuSE Linux Enterprise Server
SSH - secure shell
STDIN - Standard input
STDOUT - Standard output
STDERR - Standard error
su - superuser
sudo - superuser do
SUID - set user ID
symlink - symbolic link
tar - tape archive
TB - terabyte
TTY - teletype terminal
UID - user identification
VDI - virtual disk image
X - X window system
YUM - Yellowdog Updater, Modified (yum)

Appendix B: FAQ

Q: Where can I access all the links in this book?

The links covered in this book along with other supplemental material is available at <http://www.LinuxTrainingAcademy.com/lfb>.

Q: What is Linux?

Linux is an open-source operating system modelled after UNIX.

Q: What is the Linux kernel?

The Linux kernel handles the interactions between the software running on the system and the hardware. To learn more, visit the official Linux kernel website at <http://www.kernel.org>.

Q: Which Linux distribution should I use?

If your goal is to eventually become a Linux system administrator, focus on CentOS or Ubuntu. CentOS is a Red Hat Enterprise Linux (RHEL) derivative. As a general rule, CentOS and RHEL are often found in corporate environments. Ubuntu is popular with startups and smaller companies that run their operations in the cloud. If you are using Linux for your own personal reasons, choose a distribution that appeals to you. To get some ideas look at DistroWatch.com's [top 10 distributions page](#).

Here are some other common Linux distributions:

- [Arch Linux](#)
- [Debian](#)
- [Fedora](#)
- [LinuxMint](#)
- [Mageia](#)
- [openSUSE](#)

There are several special purpose Linux distributions that focus on a single area. Examples areas of focus include education, minimalism, multimedia, networking/firewalls, and security. Here is just a sampling of the available specialty distros.

- [ArtistX](#) - A DVD which turns a computer into a full multimedia production studio.

- [Edubuntu](#) - An education oriented operating system.
- [live.linux-gamers.net](#) - A live Linux distribution focused on gaming.
- [Mythbuntu](#) - Mythbuntu is an official Ubuntu flavor focused upon setting up a standalone MythTV based PVR (personal video recorder) system.
- [Parted Magic](#) - A Hard disk management solution.
- [Scientific Linux](#) - Scientific Linux is put together by Fermilab, CERN, and various other labs and universities around the world. Its primary purpose is to reduce duplicated effort of the labs, and to have a common install base for the various experimenters.
- [Ubuntu Studio](#) - Provides the full range of multimedia content creation applications for audio, graphics, video, photography and publishing.
- [VortexBox](#) - VortexBox is a multifunctional solution to rip, store and stream CDs, digital music and Internet radio.

Q: Can I use Microsoft Office in Linux?

Microsoft Office is not available for Linux, however there are alternatives such as [Libreoffice](#), [Open Office](#), and [AbiWord](#).

Q: How do I run XYZ program in Linux?

To find Linux alternatives for software you use on Mac and Windows, visit <http://alternativeto.net/>.

Appendix C: Trademarks

BSD/OS is a trademark of Berkeley Software Design, Inc. in the United States and other countries.

Facebook is a registered trademark of Facebook, Inc..

Firefox is a registered trademark of the Mozilla Foundation.

HP and HEWLETT-PACKARD are registered trademarks that belong to Hewlett-Packard Development Company, L.P.

IBM® is a registered trademark of International Business Machines Corp., registered in many jurisdictions worldwide.

Linux® is the registered trademark of Linus Torvalds in the U.S. and other countries.

Mac and OS X are trademarks of Apple Inc., registered in the U.S. and other countries.

Open Source is a registered certification mark of Open Source Initiative.

Sun and Oracle Solaris are trademarks or registered trademarks of Oracle Corporation and/or its affiliates in the United States and other countries.

UNIX is a registered trademark of The Open Group.

Windows is a registered trademark of Microsoft Corporation in the United States and other countries.

All other product names mentioned herein are the trademarks of their respective owners.

Table of Contents

[Linux for Beginners](#)

[Your Free Gift](#)

[Introduction](#)

[First Things First: Getting Access](#)

[Web Based Command Line Access](#)

[Web Hosting Shell Accounts](#)

[Using Preinstalled Linux Images with VirtualBox](#)

[Deep Dive](#)

[Getting Connected](#)

[Choosing an SSH Client](#)

[Connecting via SSH with a Password from Windows](#)

[Connecting via SSH with a Password from Mac](#)

[General Information on Connecting via SSH with Keys](#)

[Importing SSH Keys on Windows](#)

[Generating SSH Keys on Windows](#)

[Generating SSH Keys on Mac](#)

[Connecting via SSH with Keys from Mac](#)

[Connecting via Telnet](#)

[Connecting Directly](#)

[Deep Dive](#)

[Welcome to Shell](#)

[Deep Dive](#)

[Linux Directory Structure](#)

[Common Directories](#)

[Comprehensive Directory Listing](#)

[Unix Specific Directories](#)

[Application Directory Structures](#)

[Example Top Level Directory Listings](#)

[Deep Dive](#)

[Basic Linux Commands](#)

[Teach Yourself to Fish](#)

[Deep Dive](#)

[Working with Directories](#)

[Creating and Removing Directories](#)

[Your Free Gift](#)

[Listing Files and Understanding ls Output](#)

[Listing All Files, Including Hidden Files](#)

[Listing Files by Type](#)

[Listing Files by Time and in Reverse Order](#)

[Listing Files Recursively](#)

[List Directories, Not Contents](#)

[Listing Files with Color](#)

[Commonly Used ls Options](#)

[Working with Spaces in Names](#)

[Deep Dive](#)

[File and Directory Permissions Explained](#)

[Secret Decoder Ring for Permissions](#)

[Changing Permissions](#)

[Numeric Based Permissions](#)

[Commonly Used Permissions](#)

[Working with Groups](#)

[Directory Permissions Revisited](#)

[Default Permissions and the File Creation Mask](#)

[Special Modes](#)

[umask Examples](#)

[Free Training Videos on Linux Permissions](#)

[Deep Dive](#)

[Finding Files](#)

[Locate - A fast find](#)

[Deep Dive](#)

[Viewing and Editing Files](#)

[Viewing Files In Real Time](#)

[Editing Files](#)

[Specifying a Default Editor](#)

[Deep Dive](#)

[Comparing Files](#)

[Determining a File's Type](#)

[Searching in Files](#)

[Searching for Text in ASCII Files](#)

[Searching For Text in Binary Files](#)

[Pipes](#)

[Deleting, Copying, Moving, and Renaming Files](#)

[Removing Files](#)

[Copying Files](#)

[Moving and Renaming Files](#)

[Sorting Data](#)

[Creating a Collection of Files](#)

[Compressing Files To Save Space](#)

[Compressing Archives](#)

[Redirection](#)

[Standard Error](#)

[Null Device](#)

[Deep Dive](#)

[Transferring and Copying Files](#)

[Deep dive](#)

[Welcome Back to Shell](#)

[Customizing the Prompt](#)

[Creating Aliases](#)

[Interactive vs Non-interactive Sessions](#)

[Comments](#)

[Shell History](#)

[Tab Completion](#)

[Shell Command Line Editing](#)

[Dealing with Long Shell Commands](#)

[Environment Variables](#)

[Removing Variables from the Environment](#)

[Deep Dive](#)

[Processes and Job Control](#)

[Listing Processes and Displaying Information](#)

[Running Processes in the Foreground and Background](#)

[Killing Processes](#)

[Deep Dive](#)

[Scheduling Repeated Jobs with Cron](#)

[Crontab Format](#)

[Using the Crontab Command](#)

[Deep Dive](#)

[Switching Users and Running Commands as Others](#)

[su](#)

[Sudo - Super User Do](#)

[Using Sudo](#)

[Deep Dive](#)

[Installing Software](#)

[Installing Software on CentOS, Fedora, and RedHat Distributions](#)

[Installing Software on Debian and Ubuntu](#)

[Free Video on Installing Linux Software](#)

[Deep Dive](#)

[The End and the Beginning](#)

[About the Author](#)

[Other Books by the Author](#)

[Additional Resources Including Exclusive Discounts for Linux for Beginners Readers](#)

[Books](#)

[Courses](#)

[Cloud Hosting and VPS \(Virtual Private Servers\)](#)

[Web Hosting with SSH and Shell Access](#)

[Appendices](#)

[Appendix A: Abbreviations and Acronyms](#)

[Appendix B: FAQ](#)

[Appendix C: Trademarks](#)