



Global Knowledge™

Expert Reference Series of White Papers

The OSI Model: Understanding the Seven Layers of Computer Networks

1-800-COURSES

www.globalknowledge.com

<https://t.me/learningnets>

The OSI Model: Understanding the Seven Layers of Computer Networks

Paul Simoneau, Global Knowledge Course Director, Network+, CCNA, CTP

Introduction

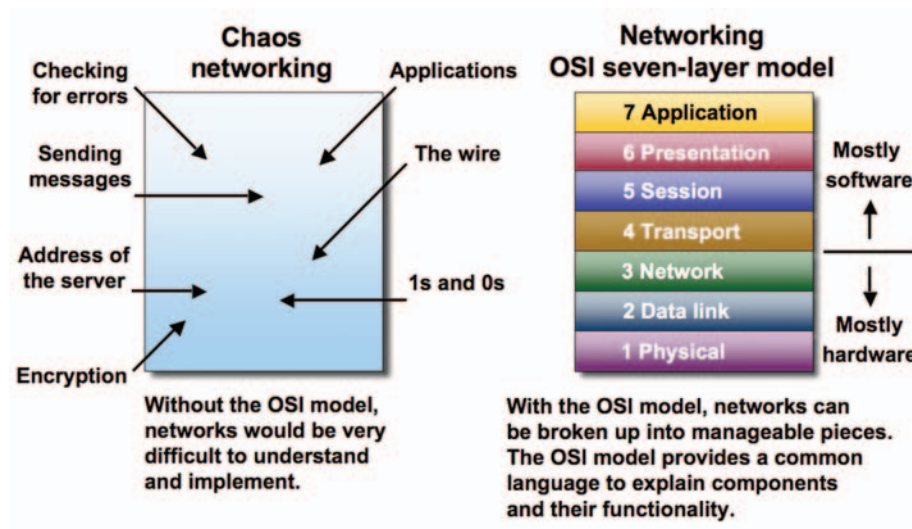
The Open Systems Interconnection (OSI) model is a reference tool for understanding data communications between any two networked systems. It divides the communications processes into seven layers. Each layer both performs specific functions to support the layers above it and offers services to the layers below it. The three lowest layers focus on passing traffic through the network to an end system. The top four layers come into play in the end system to complete the process.

This white paper will provide you with an understanding of each of the seven layers, including their functions and their relationships to each other. This will provide you with an overview of the network process, which can then act as a framework for understanding the details of computer networking.

Since the discussion of networking often includes talk of "extra layers", this paper will address these unofficial layers as well.

Finally, this paper will draw comparisons between the theoretical OSI model and the functional TCP/IP model. Although TCP/IP has been used for network communications before the adoption of the OSI model, it supports the same functions and features in a differently layered arrangement.

An Overview of the OSI Model



A networking model offers a generic means to separate computer networking functions into multiple layers. Each of these layers relies on the layers below it to provide supporting capabilities and performs support to the layers above it. Such a model of layered functionality is also called a “protocol stack” or “protocol suite”.

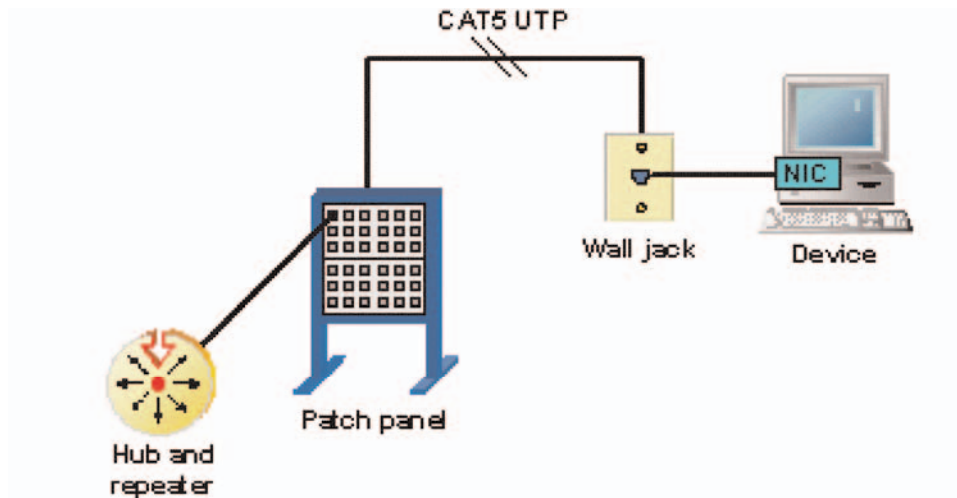
Protocols, or rules, can do their work in either hardware or software or, as with most protocol stacks, in a combination of the two. The nature of these stacks is that the lower layers do their work in hardware or firmware (software that runs on specific hardware chips) while the higher layers work in software.

The Open System Interconnection model is a seven-layer structure that specifies the requirements for communications between two computers. The ISO (International Organization for Standardization) standard 7498-1 defined this model. This model allows all network elements to operate together, no matter who created the protocols and what computer vendor supports them.

The main benefits of the OSI model include the following:

- Helps users understand the big picture of networking
- Helps users understand how hardware and software elements function together
- Makes troubleshooting easier by separating networks into manageable pieces
- Defines terms that networking professionals can use to compare basic functional relationships on different networks
- Helps users understand new technologies as they are developed
- Aids in interpreting vendor explanations of product functionality

Layer 1 – The Physical Layer



The physical layer of the OSI model defines connector and interface specifications, as well as the medium (cable) requirements. Electrical, mechanical, functional, and procedural specifications are provided for sending a bit stream on a computer network.

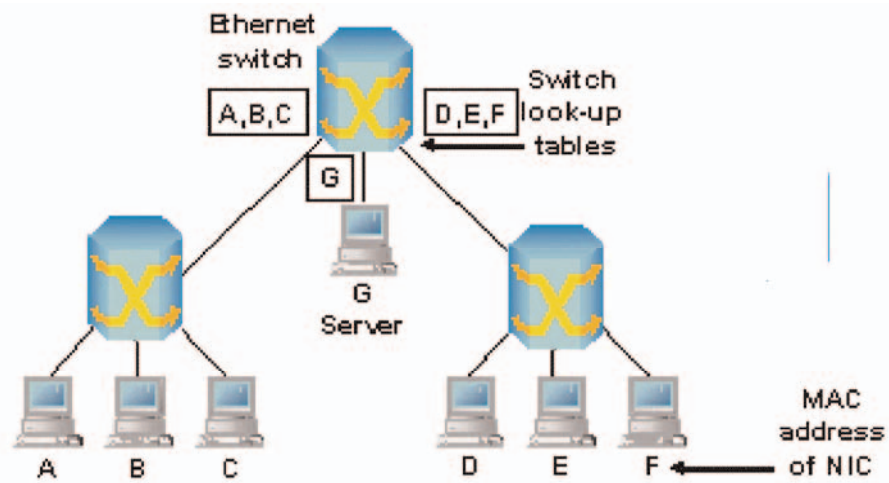
Components of the physical layer include:

- Cabling system components
- Adapters that connect media to physical interfaces
- Connector design and pin assignments
- Hub, repeater, and patch panel specifications
- Wireless system components
- Parallel SCSI (Small Computer System Interface)
- Network Interface Card (NIC)

In a LAN environment, Category 5e UTP (Unshielded Twisted Pair) cable is generally used for the physical layer for individual device connections. Fiber optic cabling is often used for the physical layer in a vertical or riser backbone link. The IEEE, EIA/TIA, ANSI, and other similar standards bodies developed standards for this layer.

Note: The Physical Layer of the OSI model is only part of a LAN (Local Area Network).

Layer 2 – The Data Link Layer



Layer 2 of the OSI model provides the following functions:

- Allows a device to access the network to send and receive messages
- Offers a physical address so a device's data can be sent on the network
- Works with a device's networking software when sending and receiving messages
- Provides error-detection capability

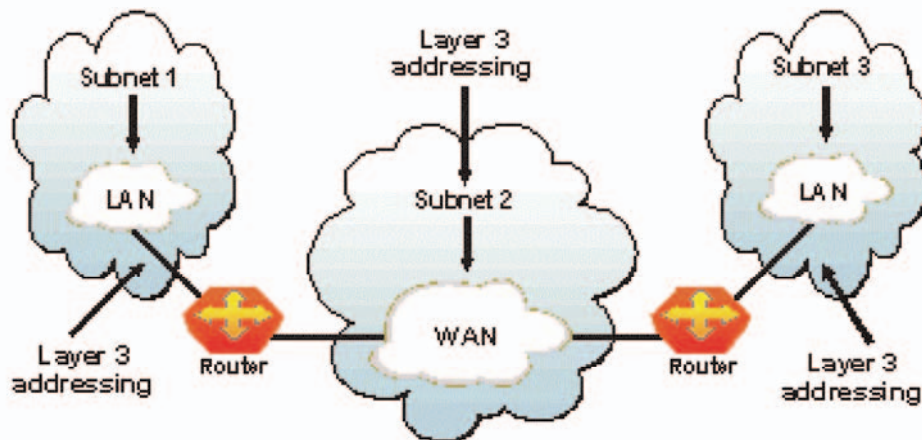
Common networking components that function at layer 2 include:

- Network interface cards
- Ethernet and Token Ring switches
- Bridges

NICs have a layer 2 or MAC address. A switch uses this address to filter and forward traffic, helping relieve congestion and collisions on a network segment.

Bridges and switches function in a similar fashion; however, bridging is normally a software program on a CPU, while switches use Application-Specific Integrated Circuits (ASICs) to perform the task in dedicated hardware, which is much faster.

Layer 3 – The Network Layer



Layer 3, the network layer of the OSI model, provides an end-to-end logical addressing system so that a packet of data can be routed across several layer 2 networks (Ethernet, Token Ring, Frame Relay, etc.). Note that network layer addresses can also be referred to as logical addresses.

Initially, software manufacturers, such as Novell, developed proprietary layer 3 addressing. However, the networking industry has evolved to the point that it requires a common layer 3 addressing system. The Internet Protocol (IP) addresses make networks easier to both set up and connect with one another. The Internet uses IP addressing to provide connectivity to millions of networks around the world.

To make it easier to manage the network and control the flow of packets, many organizations separate their network layer addressing into smaller parts known as subnets. Routers use the network or subnet portion of the IP addressing to route traffic between different networks. Each router must be configured specifically for the networks or subnets that will be connected to its interfaces.

Routers communicate with one another using routing protocols, such as Routing Information Protocol (RIP) and Open version of Shortest Path First (OSPF), to learn of other networks that are present and to calculate the best way to reach each network based on a variety of criteria (such as the path with the fewest routers). Routers and other networked systems make these routing decisions at the network layer.

When passing packets between different networks, it may become necessary to adjust their outbound size to one that is compatible with the layer 2 protocol that is being used. The network layer accomplishes this via a process known as fragmentation. A router's network layer is usually responsible for doing the fragmentation. All reassembly of fragmented packets happens at the network layer of the final destination system.

Two of the additional functions of the network layer are diagnostics and the reporting of logical variations in normal network operation. While the network layer diagnostics may be initiated by any networked system, the system discovering the variation reports it to the original sender of the packet that is found to be outside normal network operation.

The variation reporting exception is content validation calculations. If the calculation done by the receiving system does not match the value sent by the originating system, the receiver discards the related packet with no report to the sender. Retransmission is left to a higher layer's protocol.

Some basic security functionality can also be set up by filtering traffic using layer 3 addressing on routers or other similar devices.

Layer 4 – The Transport Layer



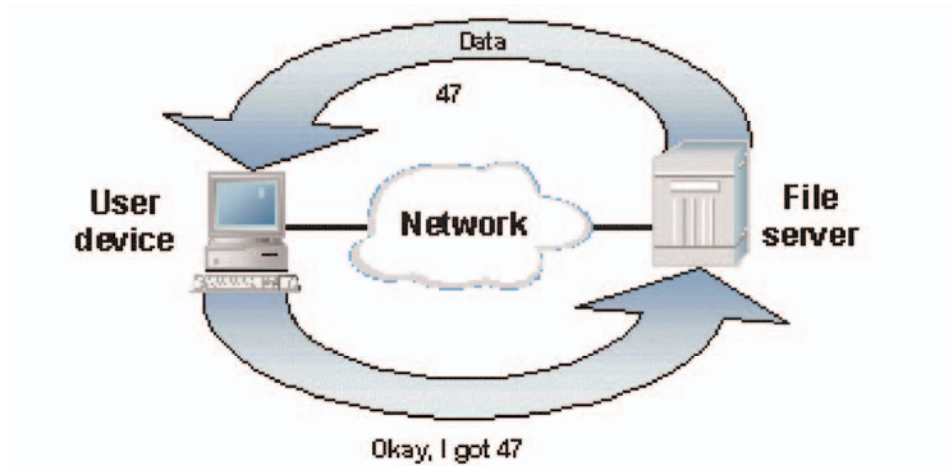
Layer 4, the transport layer of the OSI model, offers end-to-end communication between end devices through a network. Depending on the application, the transport layer either offers reliable, connection-oriented or connectionless, best-effort communications.

Some of the functions offered by the transport layer include:

- Application identification
- Client-side entity identification
- Confirmation that the entire message arrived intact
- Segmentation of data for network transport
- Control of data flow to prevent memory overruns
- Establishment and maintenance of both ends of virtual circuits
- Transmission-error detection
- Realignment of segmented data in the correct order on the receiving side
- Multiplexing or sharing of multiple sessions over a single physical link

The most common transport layer protocols are the connection-oriented TCP Transmission Control Protocol (TCP) and the connectionless UDP User Datagram Protocol (UDP).

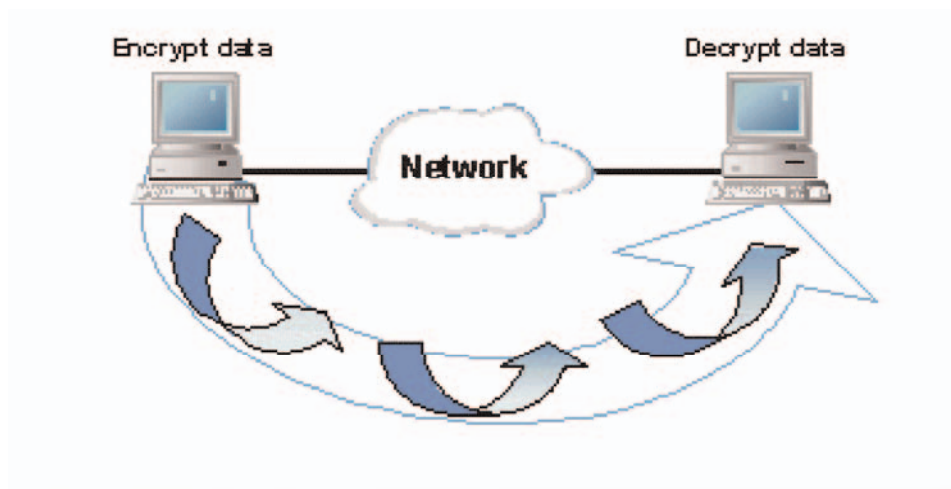
Layer 5 – The Session Layer



Layer 5, the session layer, provides various services, including tracking the number of bytes that each end of the session has acknowledged receiving from the other end of the session. This session layer allows applications functioning on devices to establish, manage, and terminate a dialog through a network. Session layer functionality includes:

- Virtual connection between application entities
- Synchronization of data flow
- Creation of dialog units
- Connection parameter negotiations
- Partitioning of services into functional groups
- Acknowledgements of data received during a session
- Retransmission of data if it is not received by a device

Layer 6 – The Presentation Layer



Layer 6, the presentation layer, is responsible for how an application formats the data to be sent out onto the network. The presentation layer basically allows an application to read (or understand) the message.

Examples of presentation layer functionality include:

- Encryption and decryption of a message for security
- Compression and expansion of a message so that it travels efficiently
- Graphics formatting
- Content translation
- System-specific translation

Layer 7 – The Application Layer



Layer 7, the application layer, provides an interface for the end user operating a device connected to a network. This layer is what the user sees, in terms of loading an application (such as Web browser or e-mail); that is, this application layer is the data the user views while using these applications.

Examples of application layer functionality include:

- Support for file transfers
- Ability to print on a network
- Electronic mail
- Electronic messaging
- Browsing the World Wide Web

Layers 8, 9, and 10

Whether a designed to be a humorous extension or a secret technician code, layers 8, 9, and 10 are not officially part of the OSI model. They refer to the non-technical aspects of computer networking that often interfere with the smooth design and operation of the network.

Layer 8 is usually considered the “office politics” layer. In most organizations, there is at least one group who is favored, at least temporarily, by management and receives “special” treatment. When it comes to networking, this may mean that this group always has the latest and/or fastest equipment and highest speed network links.

Layer 9 is generally referred to as the “blindness” layer. This layer applies to organizational managers who have already decided, usually with little or no current information, to dictate a previously successful network plan. They may say things such as:

“It worked in my last company, so we will use it here.”

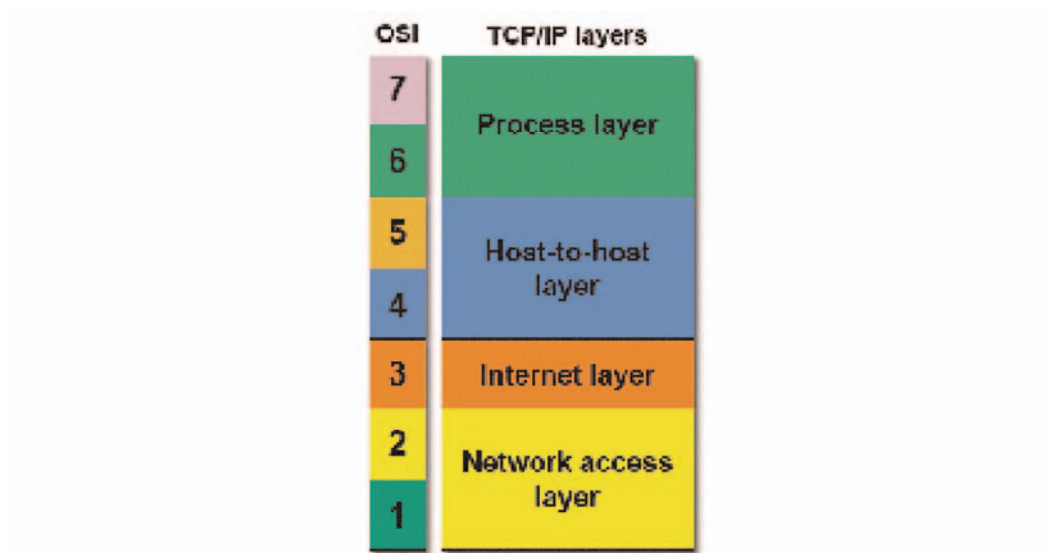
“Everybody says this is the right solution.”

“I read in an airline magazine that this was the best way to do it so that is what we will do.”

What these managers seem to forget is that they are paying a highly qualified staff to provide them with useful information. These managers bypass planning in order to make a quick decision.

Layer 10, the “user” layer, is in every organization. But users are much more than a layer. While they are one of the reasons the network exists, users can also be a big part of the need for troubleshooting. This is especially true when the users have computers at home and have decided to “help” the network administrator or manager by making changes to the network without consulting the network staff. Equally challenging is the user who “didn’t do anything” when the network segment in his/her immediate vicinity suddenly stopped working. In these cases, the layer 10 identification coincides with layer 10 troubles (and the “ID10T” label some technicians have used).

TCP/IP Model Overview



The OSI model describes computer networking in seven layers. While there have been implementations of networking protocol that use those seven layers, most networks today use TCP/IP. But, networking professionals continue to describe networking functions in relation to the OSI layer that performs those tasks.

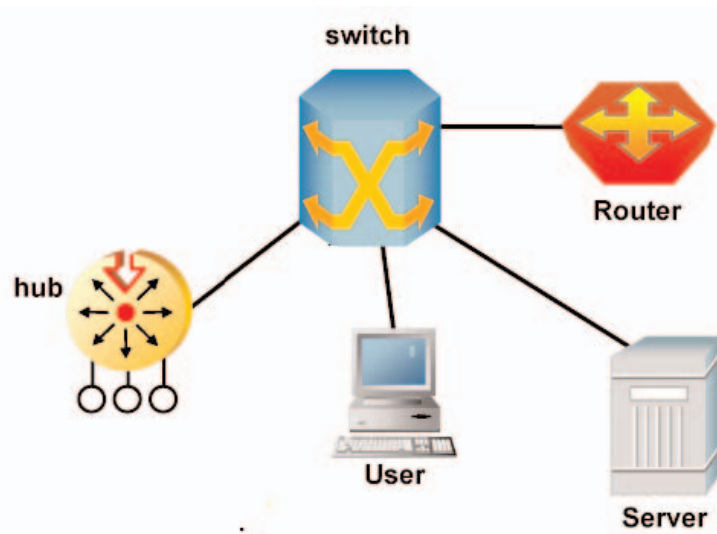
The TCP/IP model uses four layers to perform the functions of the seven-layer OSI model.

The network access layer is functionally equal to a combination of OSI physical and data link layers (1 and 2). The Internet layer performs the same functions as the OSI network layer (3).

Things get a bit more complicated at the host-to-host layer of the TCP/IP model. If the host-to-host protocol is TCP, the matching functionality is found in the OSI transport and session layers (4 and 5). Using UDP equates to the functions of only the transport layer of the OSI model.

The TCP/IP process layer, when used with TCP, provides the functions of the OSI model's presentation and application layers (6 and 7). When the TCP/IP transport layer protocol is UDP, the process layer's functions are equivalent to OSI session, presentation, and application layers (5, 6, and 7).

Equipment at the Layers



Some of the layers use equipment to support the identified functions. Hub related activity is "Layer One". The naming of some devices designates the functional layer such as "Layer Two Switch" or "Layer Three Switch". Router functions focus on "Layer Three". User workstations and servers are often identified with "Layer Seven".

Summary

The most identified benefit of the OSI model is that it organizes thinking about networks and give novices, journeymen, and masters a common, computer networking language. Human communication, discussions, and collaboration can use this language to remove ambiguity and clarify intent.

Learn More

Learn more about how you can improve productivity, enhance efficiency, and sharpen your competitive edge. Check out the following Global Knowledge courses:

[Understanding Networking Fundamentals](#)

[TCP/IP Networking](#)

[Network+ Boot Camp](#)

For more information or to register, visit www.globalknowledge.com or call **1-800-COURSES** to speak with a sales representative.

Our courses and enhanced, hands-on labs offer practical skills and tips that you can immediately put to use. Our expert instructors draw upon their experiences to help you understand key concepts and how to apply them to your specific work situation. Choose from our more than 700 courses, delivered through Classrooms, e-Learning, and On-site sessions, to meet your IT and management training needs.

About the Author

Paul Simoneau has over 37 years of experience in working with multiple aspects of computers and data communications. He is the founder and president of NeuroLink, Ltd., an international coaching and education company specializing in professional development. NeuroLink's client list includes Cisco, AT&T, Lucent, Citibank, Qwest Communications, Hewlett-Packard, Sprint, Verizon, all branches of the US Armed Forces, and many others.

He is also a senior instructor and course director with Global Knowledge, the blended solutions training company. In that role, he has authored and managed two highly successful courses—Hands-on Internetworking with TCP/IP and Network Management Essentials. Both courses are offered world-wide in Classroom, Virtual Classroom, and Self-directed formats. In support of these and other courses, he actively participates in Global Knowledge's e-mentoring programs.

His is author of the books *Hands-On TCP/IP* and *SNMP Network Management*.