

# Beginning C++ Programming

## Configuring the Path environment variable for MinGW-64 on Windows prior to Windows 10

If you are installing MinGW-64 on Microsoft Windows prior to Windows 10, then the procedure to set the Path environment variable will be different than how I did it in the installation video.

If you are using Windows 10, then please follow the procedure in the course video.

Be sure that you have installed MinGW-64, and that it is installed in a location such as:

**C:\Program Files\mingw-w64\mingw64**

The location you used may have been different from this one. I'm using this one since it is the location that I used in the installation video.

What we need to do next is add the following directory name to the Windows Path environment variable.

**C:\Program Files\mingw-w64\mingw64\bin**

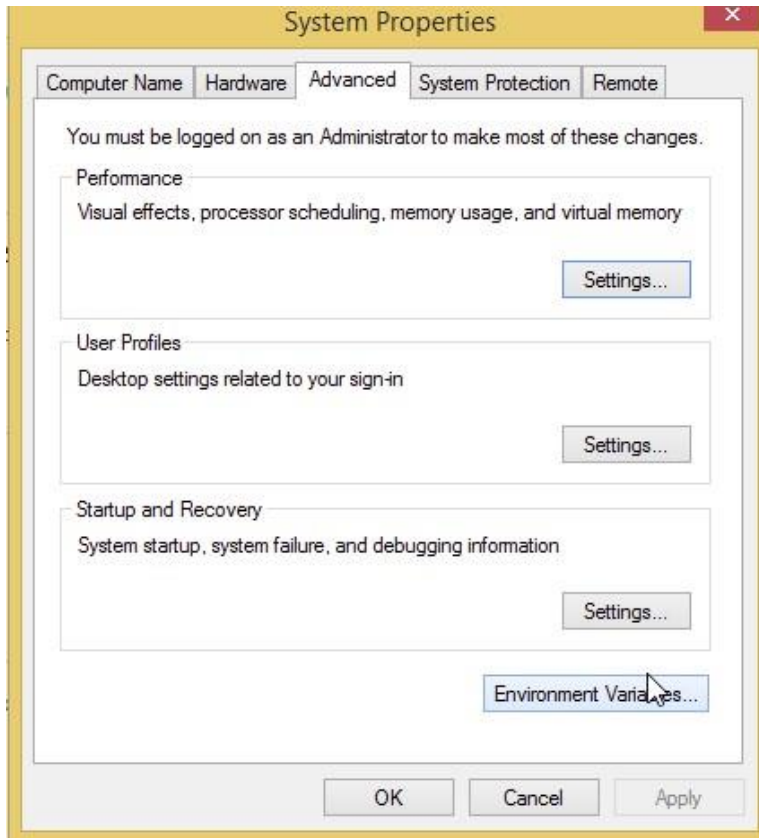
First you need to open the Windows Control Panel. If you aren't sure how to do this, please refer to the following link:

<https://support.microsoft.com/en-us/help/13764/windows-where-is-control-panel>

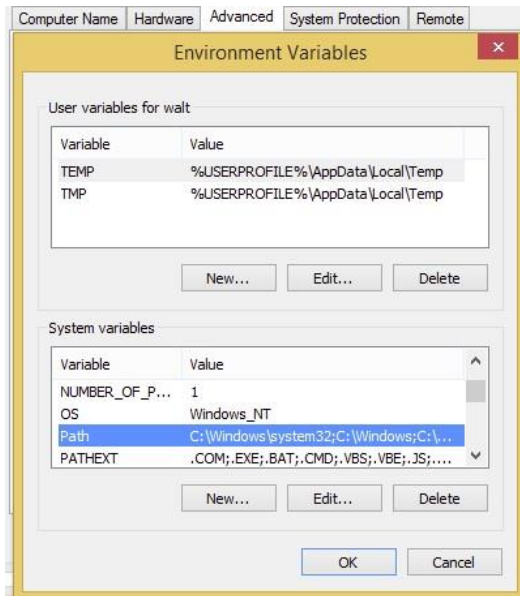
Once the Control Panel is open, navigate to **System and Security**, and then **System** and you should see a screen like the one below:



Select **Advanced system settings**.



Then select **Environment Variables** and you should see a screen like the following:



Under **System Variables**, scroll down until you see the **Path** variable. Select it and click **Edit**.

Then add the following to the end of the path in the **Variable value** textbox as shown below. Please be sure to begin the text you add with a semi-colon.

**;C:\Program Files\mingw-w64\mingw64\bin**

**Please be very careful and be sure you APPEND this path to the existing Path. Be sure NOT to delete anything!**



Click **OK** several times until you exit the Control Panel.

At this point your Path environment variable is set.