

Beginning C++ Programming

Configuring the Path environment variable for MinGW on Windows prior to Windows 10

If you are installing MinGW on Microsoft Windows prior to Windows 10, then the procedure to set the Path environment variable will be different than how I did it in the installation video.

If you are using Windows 10, then please follow the procedure in the course video.

Be sure that you have installed MinGW, and that it is installed in a location such as:

C:\MinGW

Please verify that there are **NO SPACES, NO SPECIAL, AND NO INTERNATIONAL CHARACTERS** used in the folder name.

What we need to do next is add the following directory name to the Windows Path environment variable.

C:\MinGW\bin

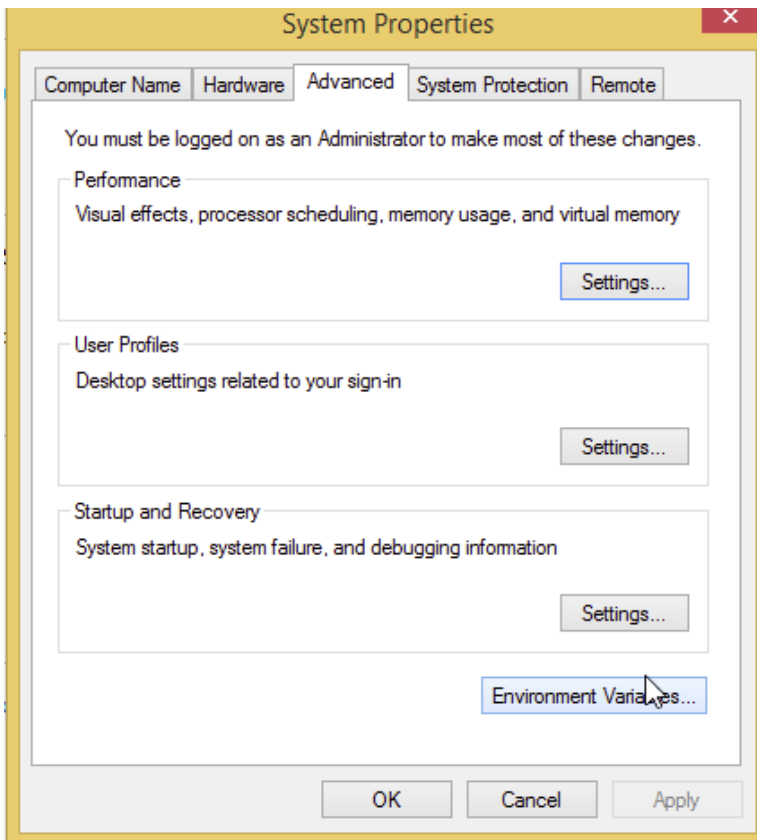
First you need to open the Windows Control Panel. If you aren't sure how to do this, please refer to the following link:

<https://support.microsoft.com/en-us/help/13764/windows-where-is-control-panel>

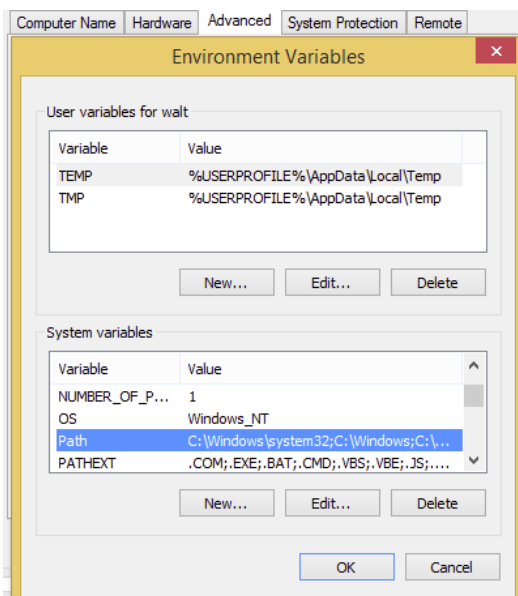
Once the Control Panel is open, navigate to **System and Security**, and then **System** and you should see a screen like the one below:



Select **Advanced system settings**.



and then select **Environment Variables** and you should see a screen like the following:

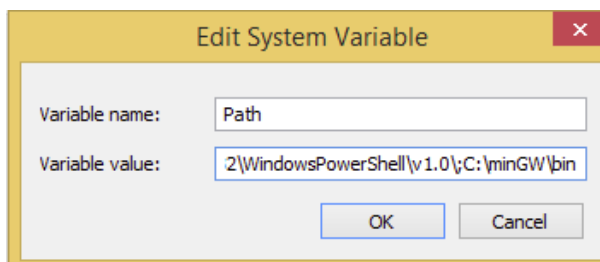


Under **System Variables**, scroll down until you see the **Path** variable. Select it and click **Edit**.

Then add the following to the end of the path in the **Variable value** textbox as shown below.

;C:\MinGW\bin

Please be very careful and be sure you APPEND this path to the existing Path. Be sure NOT to delete anything!



Click **OK** several times until you exit the Control Panel.

At this point your Path environment variable is set.