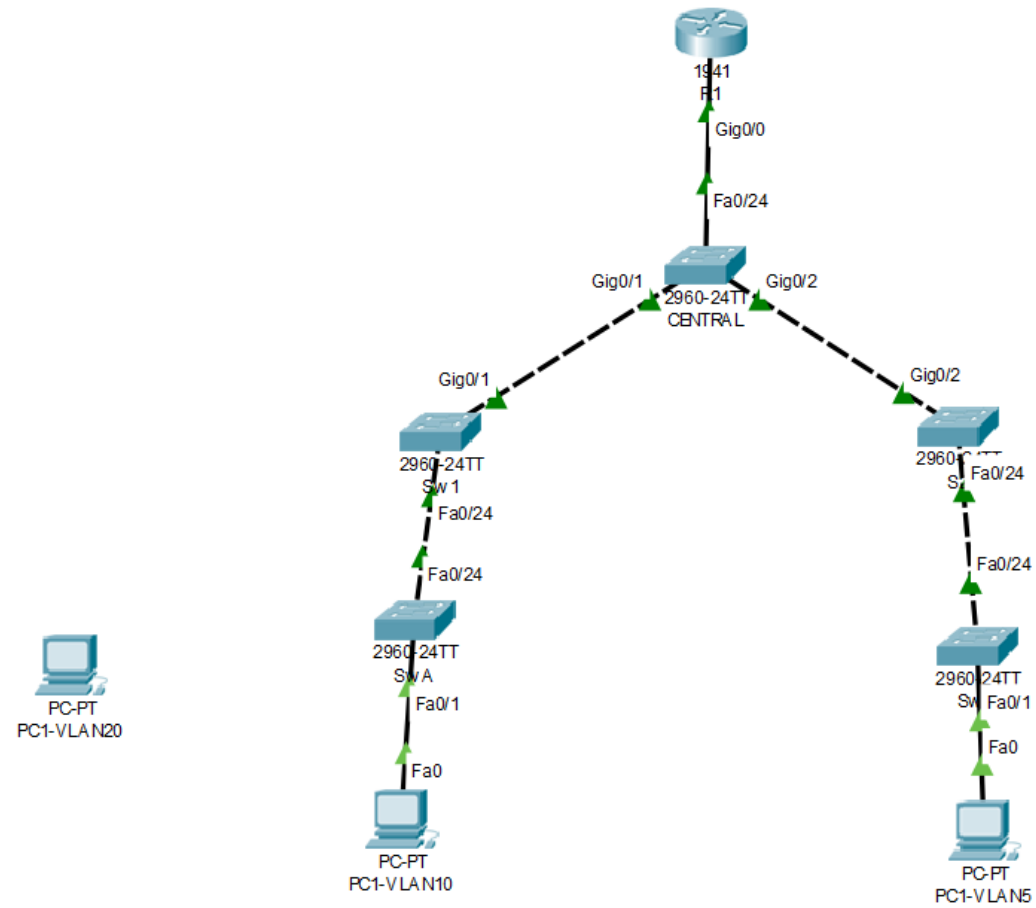
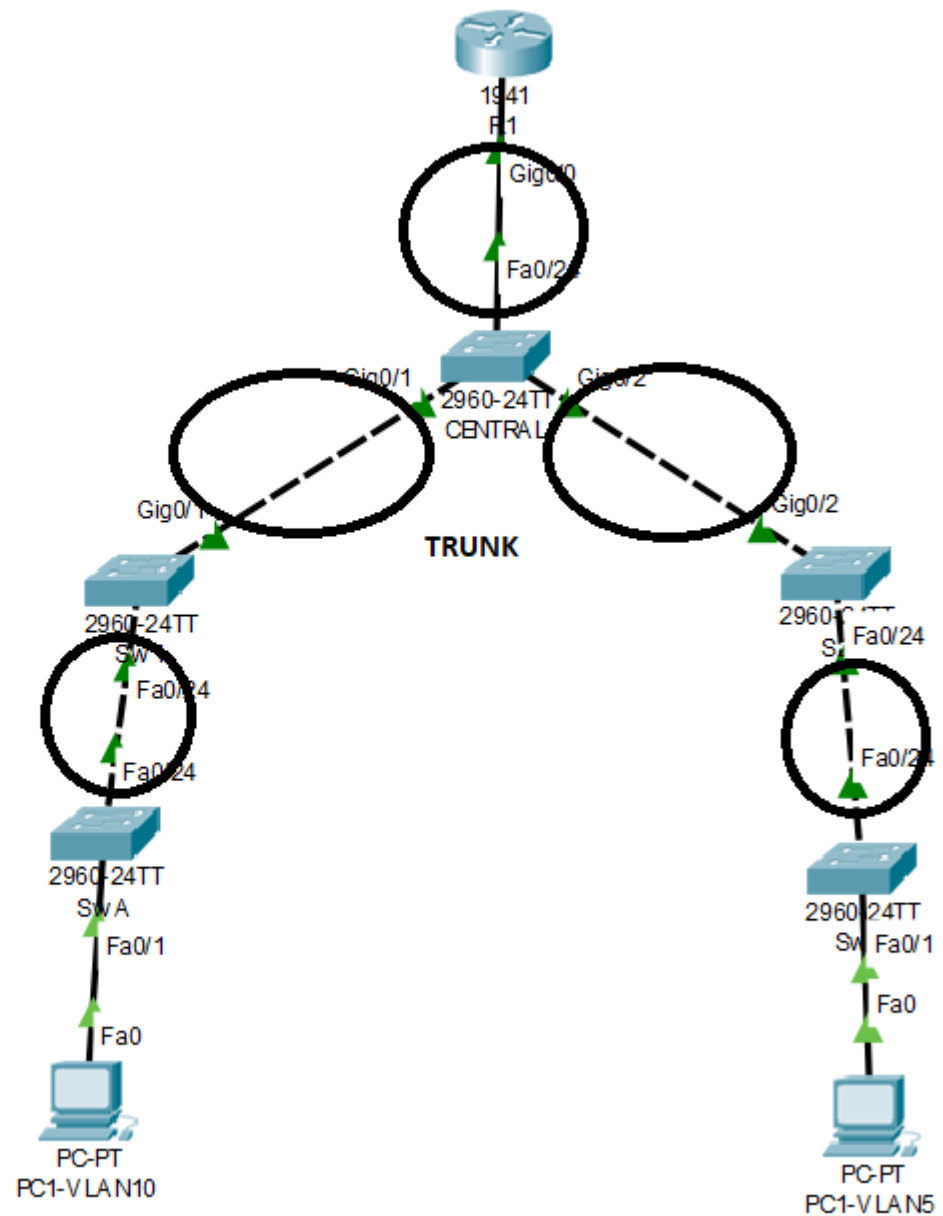
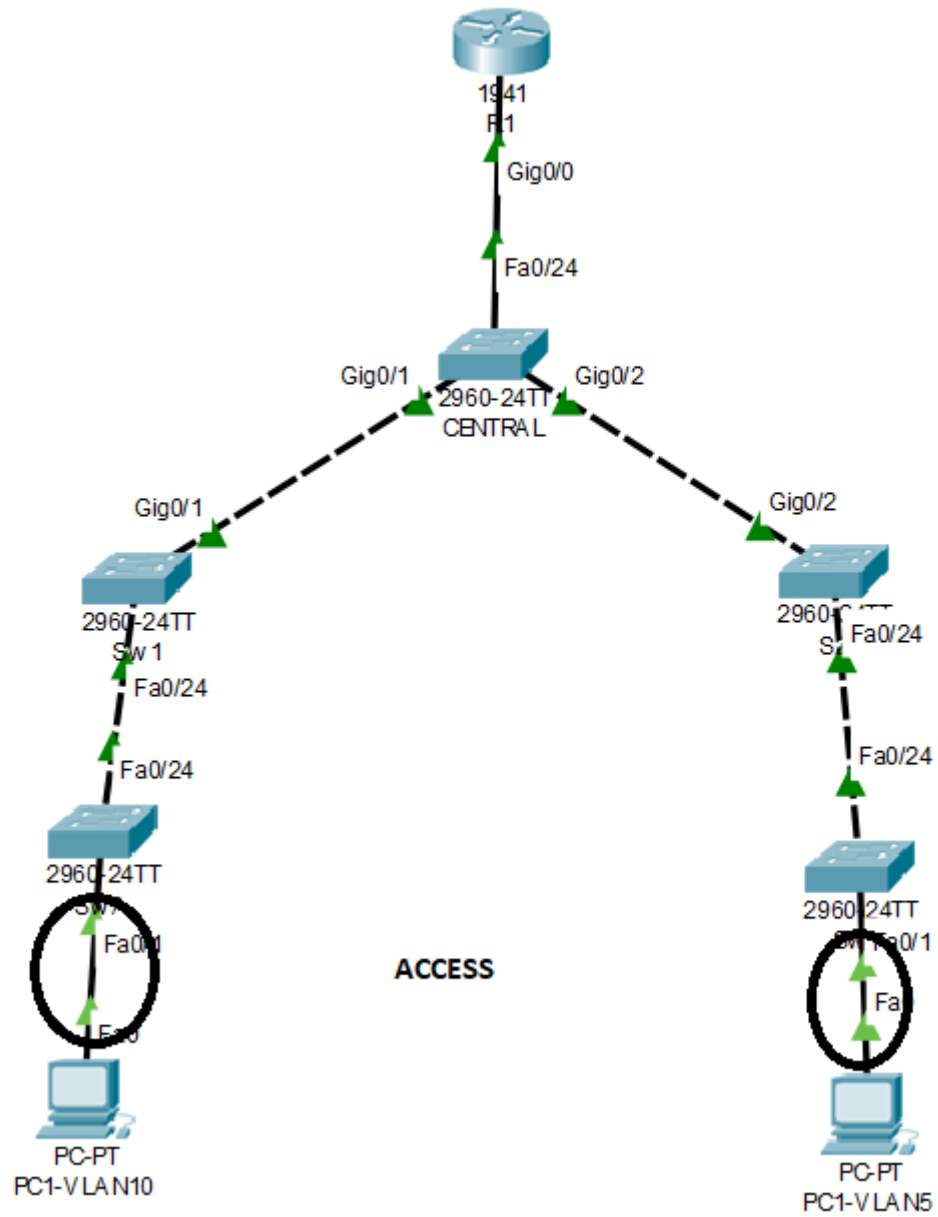


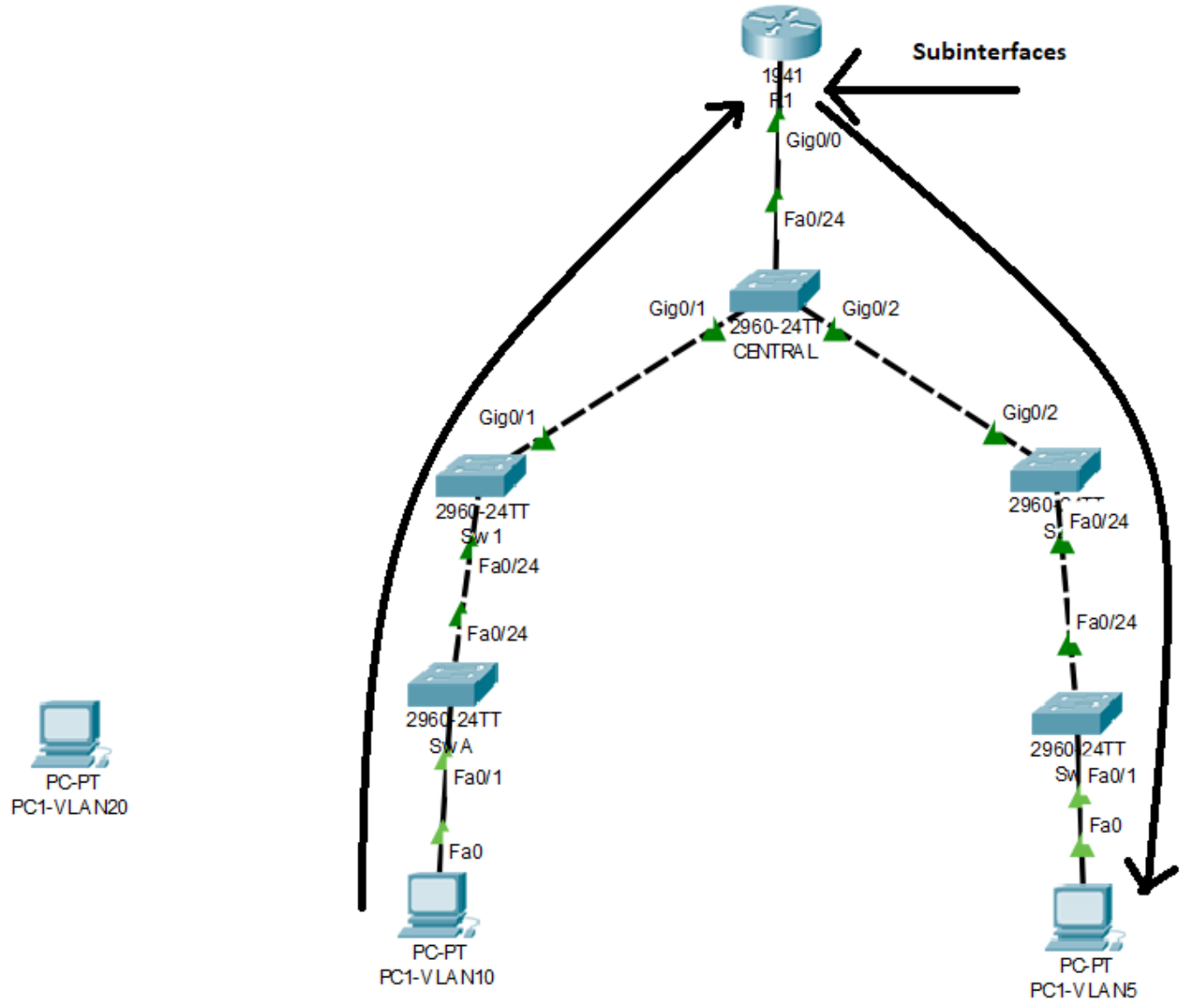
Lab 10 Seguridad Capa 2 VLAN

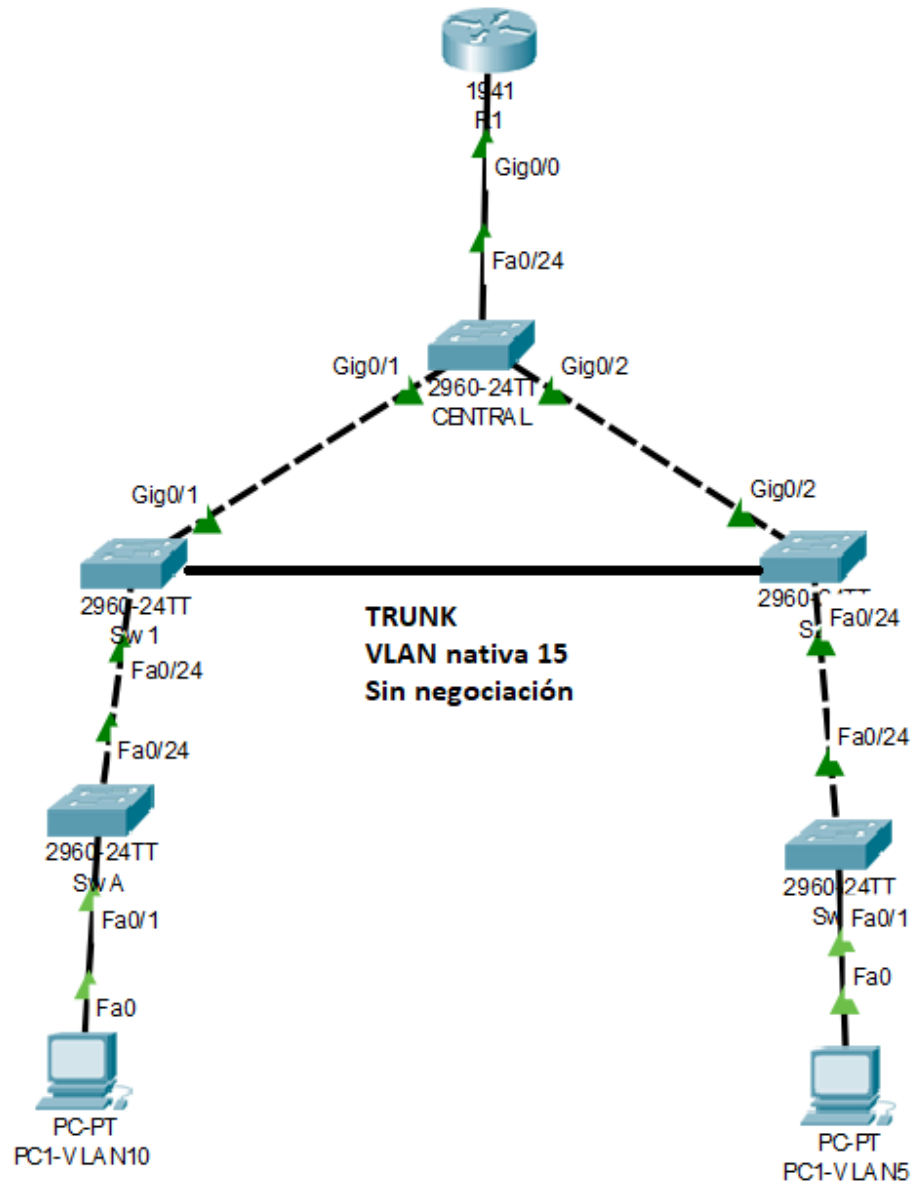


PC-PT
PC1-VLAN20



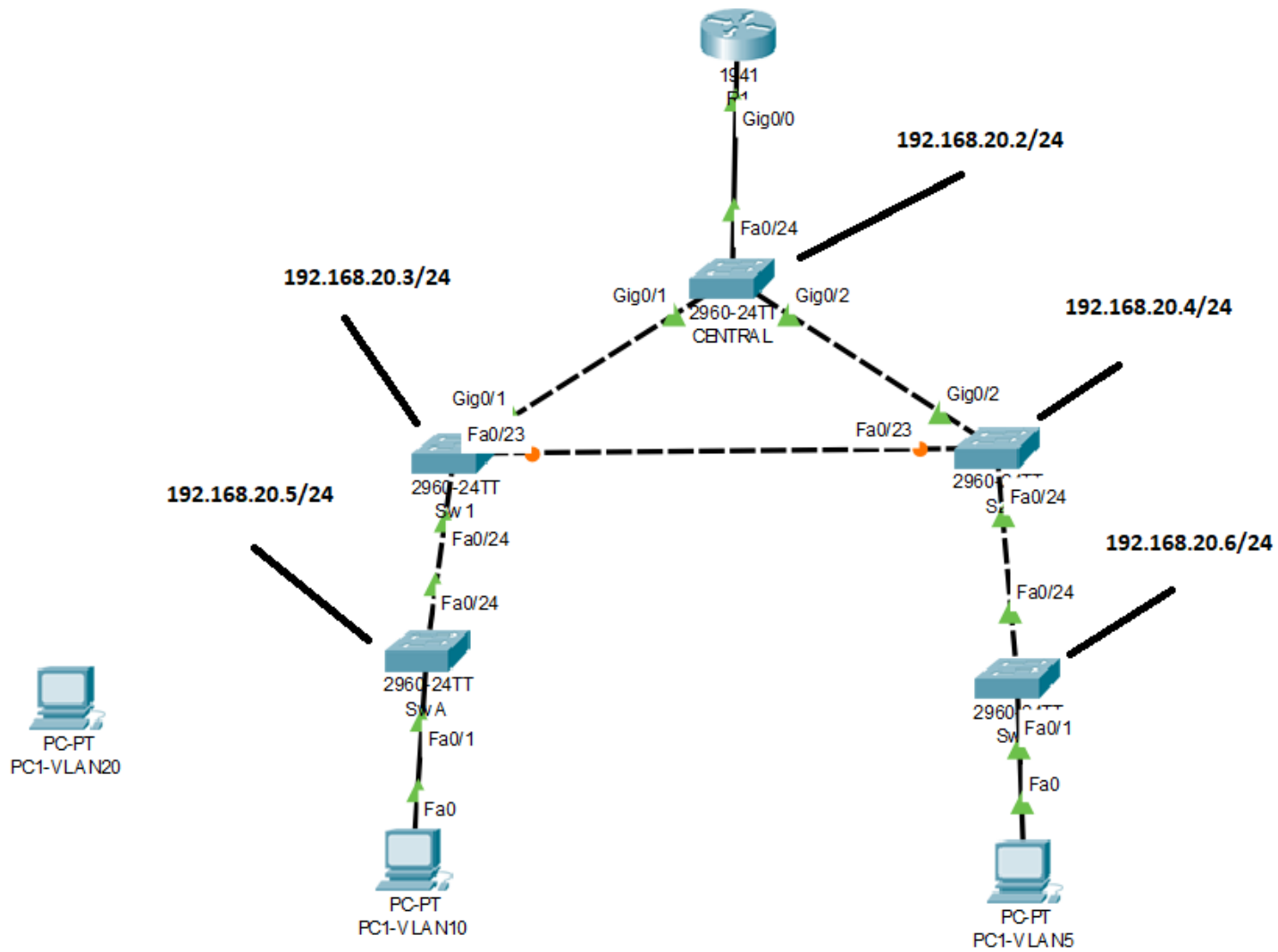






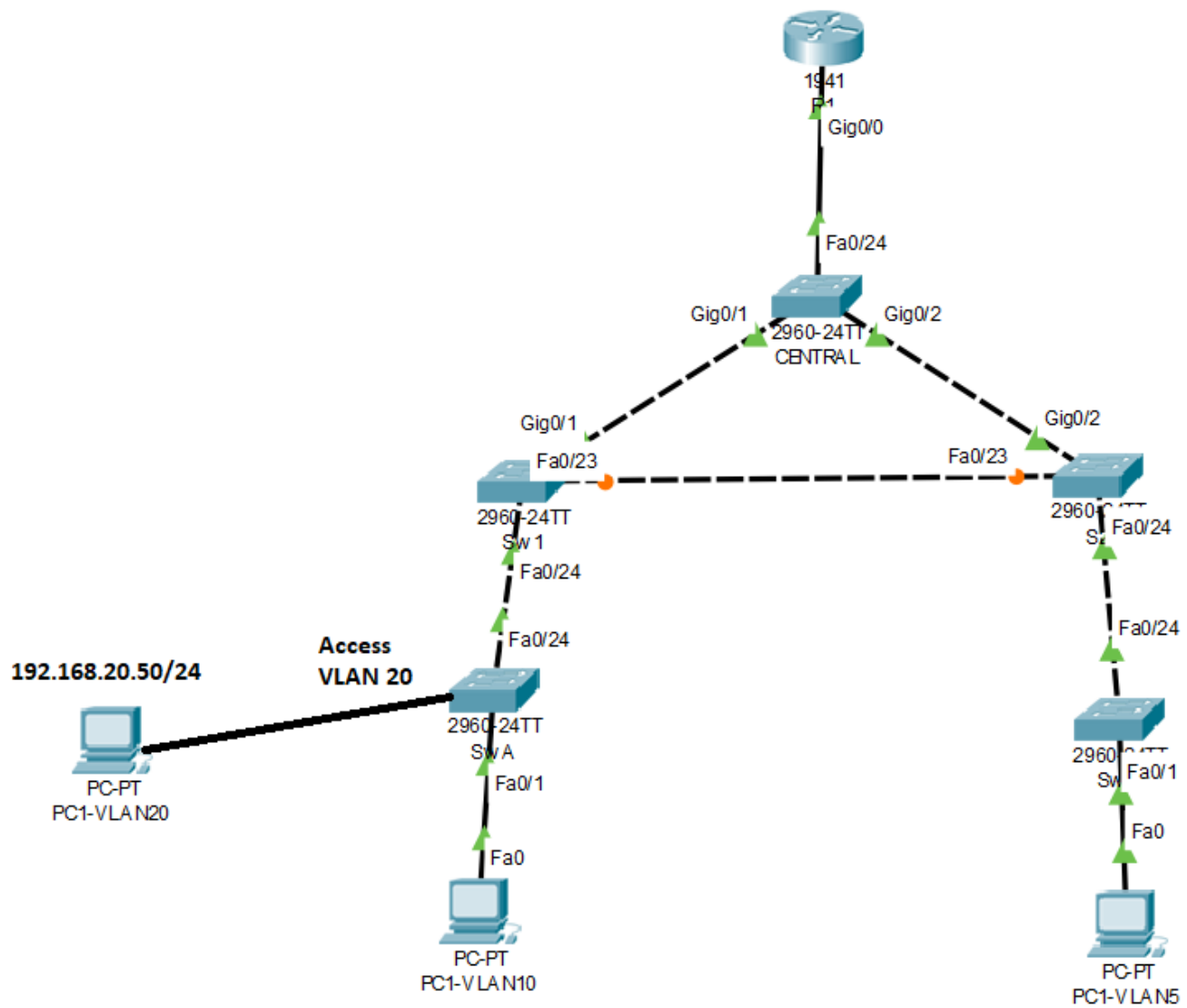
Link redundante entre SW1 y SW2

- **SW1(config)# interface f0/23**
- **SW1(config-if)# switchport mode trunk**
- **SW1(config-if)# switchport trunk native vlan 15**
- **SW1(config-if)# switchport nonegotiate**



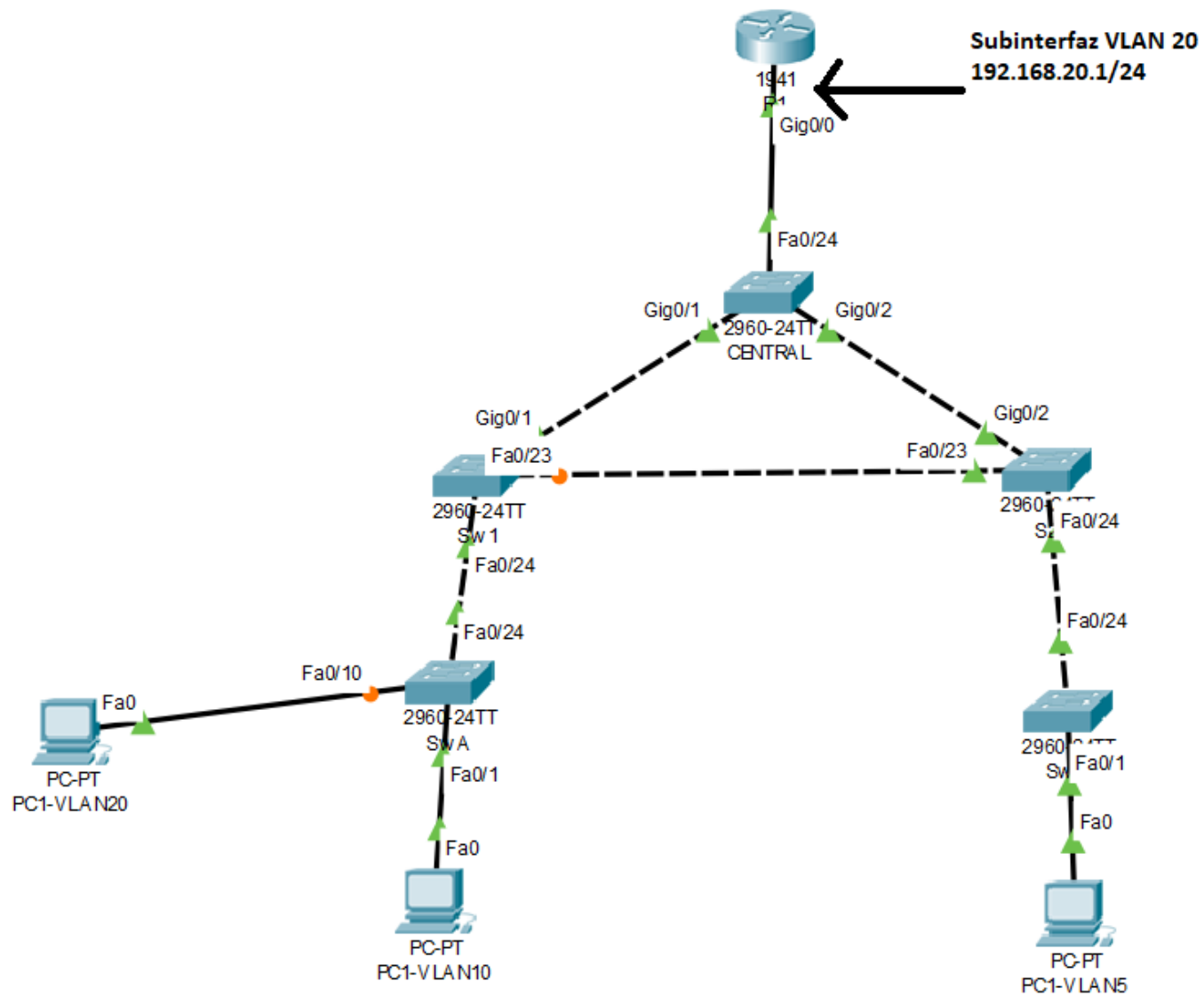
Habilitar VLAN 20 como VLAN administrativa

- **SWA(config)# vlan 20**
- **SWA(config-vlan)# exit**
- **SWA(config)# interface vlan 20**
- **SWA(config-if)# ip address 192.168.20.5 255.255.255.0**



Habilitar puerto en SWA para PC VLAN20

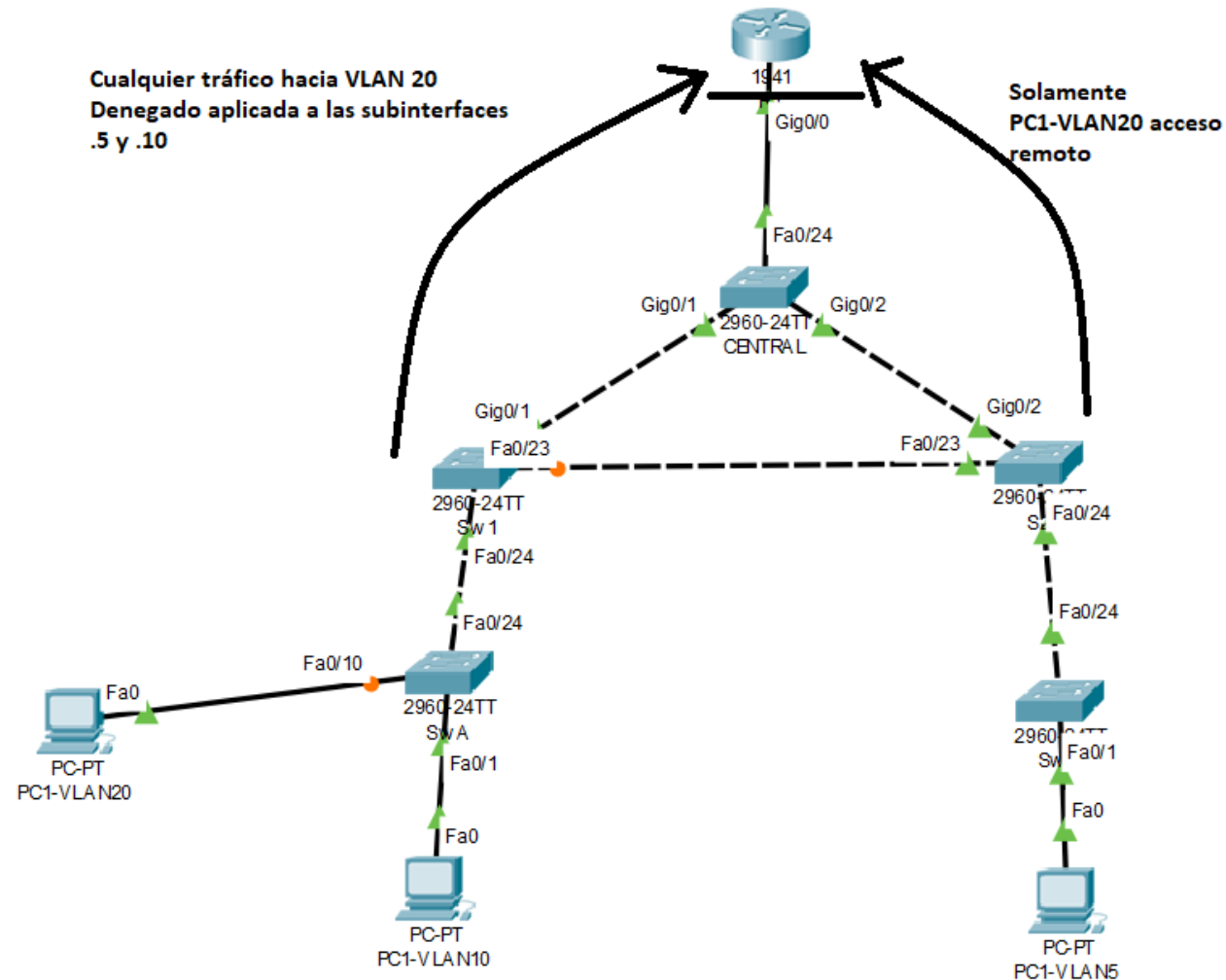
- **SWA(config)# interface f0/10**
- **SWA(config-if)# switchport mode access**
- **SWA(config-if)# switchport access vlan 20**



Habilitar VLAN20 en R1

- **R1(config)# interface g0/0.20**
- **R1(config-subif)# encapsulation dot1q 20**
- **R1(config-subif)# ip address 192.168.20.1 255.255.255.0**

Habilitar seguridad hacia la VLAN20



Habilitar seguridad hacia la VLAN20

No otra VLAN tenga acceso administrativo a los dispositivos

- **R1(config)# access-list 101 deny ip any 192.168.20.0 0.0.0.255**
- **R1(config)# access-list 101 permit ip any any**

Solamente VLAN 20 tenga acceso administrativo a R1

- **R1(config)# access-list 102 permit ip host 192.168.20.20 any**

Habilitar seguridad hacia la VLAN20

- **R1(config)# interface g0/0.5**
- **R1(config-subif)# ip access-group 101 in**
- **R1(config-subif)# interface g0/0.10**
- **R1(config-subif)# ip access-group 101 in**
- **R1(config-subif)# line vty 0 4**
- **R1(config-line)# access-class 102 in**