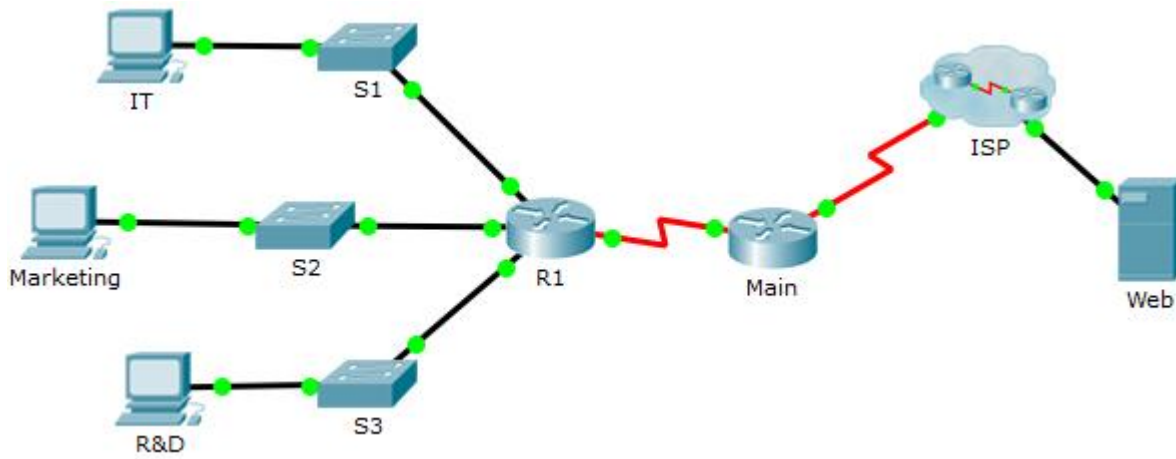


Packet Tracer – Troubleshooting Challenge

Topology



Addressing Table

Device	Interface	IPv4 Address	Subnet Mask	Default Gateway
		IPv6 Address/Prefix	IPv6 Link-local	
R1	G0/0	172.16.1.62	255.255.255.192	N/A
		2001:DB8:CAFE::1/64	FE80::1	N/A
	G0/1	172.16.1.126	255.255.255.192	N/A
		2001:DB8:CAFE:1::1/64	FE80::1	N/A
	G0/2	172.16.1.254	255.255.255.128	N/A
		2001:DB8:CAFE:2::1/64	FE80::1	N/A
S0/0/1	10.0.0.2	255.255.255.252	N/A	
	2001:DB8:2::1/64	FE80::1	N/A	
Main	S0/0/0	209.165.200.226	255.255.255.252	N/A
		2001:DB8:1::1/64	FE80::2	N/A
	S0/0/1	10.0.0.1	255.255.255.252	N/A
		2001:DB8:2::2/64	FE80::2	N/A
S1	VLAN 1	172.16.1.61	255.255.255.192	172.16.1.62
S2	VLAN 1	172.16.1.125	255.255.255.192	172.16.1.126
S3	VLAN 1	172.16.1.253	255.255.255.128	172.16.1.254
IT	NIC	172.16.1.1	255.255.255.192	172.16.1.62
		2001:DB8:CAFE::2/64	FE80::2	FE80::1
Marketing	NIC	172.16.1.65	255.255.255.192	172.16.1.126
		2001:DB8:CAFE:1::2/64	FE80::2	FE80::1
R&D	NIC	172.16.1.129	255.255.255.128	172.16.1.254
		2001:DB8:CAFE:2::2/64	FE80::2	FE80::1
Web	NIC	64.100.0.3	255.255.255.248	64.100.0.1
		2001:DB8:ACAD::3/64	FE80::2	FE80::1

Scenario / Background

After an update to the network, some devices were misconfigured. You have been tasked with correcting the configurations and verifying that all the PCs can access the websites, R1, switches, and other PC can access R1 using SSH.

Router R1 and all the switches have been preconfigured with the following:

- Enable password: **Ciscoenpa55**
- Console password: **Ciscoconpa55**
- Admin username and password: **Admin1/Admin1pa55**

Packet Tracer – Troubleshooting Challenge

Required number of hosts per subnet:

- o IT: 50 hosts
- o Marketing: 50 hosts
- o R&D: 100 hosts

Requirements

- IT, Marketing, and R&D PCs can navigate to **www.cisco.pka** and **www.cisco6.pka**.
- IT, Marketing, and R&D PCs can SSH into R1 with the username **Admin1** and encrypted password **Admin1pa55**.
- All PCs should be able to ping R1, S1, S2, S3, and other PCs.