

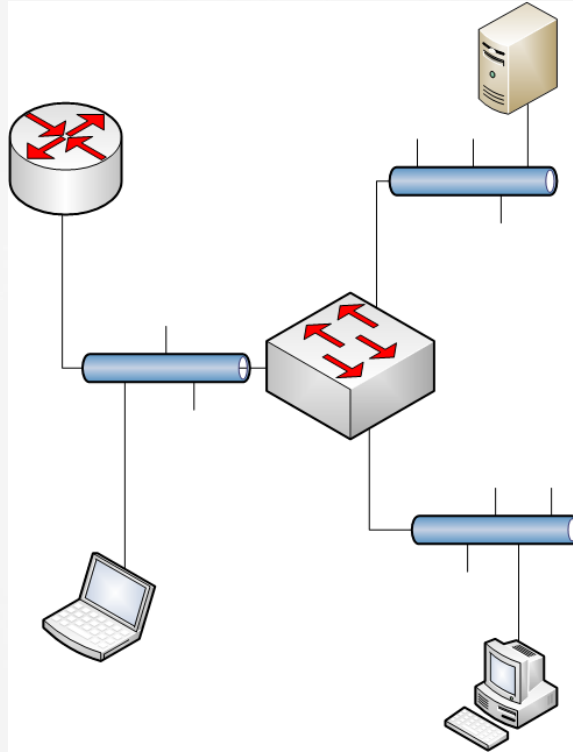


# Capturing Packets

# Capturing Packets

- » **Using Wireshark to capture packets**
  - Capture data and then review and analyze
- » **Remember to place Wireshark correctly!**
  - Where do you need to put Wireshark?
- » **What do you want to capture?**
  - Traffic patterns
  - Protocols

# Network Lab




# Capturing Packets


## » Capturing packets in Wireshark




- Launch pad
- Set options
- Select interface
- Use the toolbar
- Use the Capture menu


# Capturing Packets

## Capture

 **Interface List**  
Live list of the capture interfaces  
(counts incoming packets)

 **Start**  
Choose one or more interfaces to capture from, then **Start**

-  Local Area Connection\* 11
-  Wireless Network Connection
-  Local Area Connection

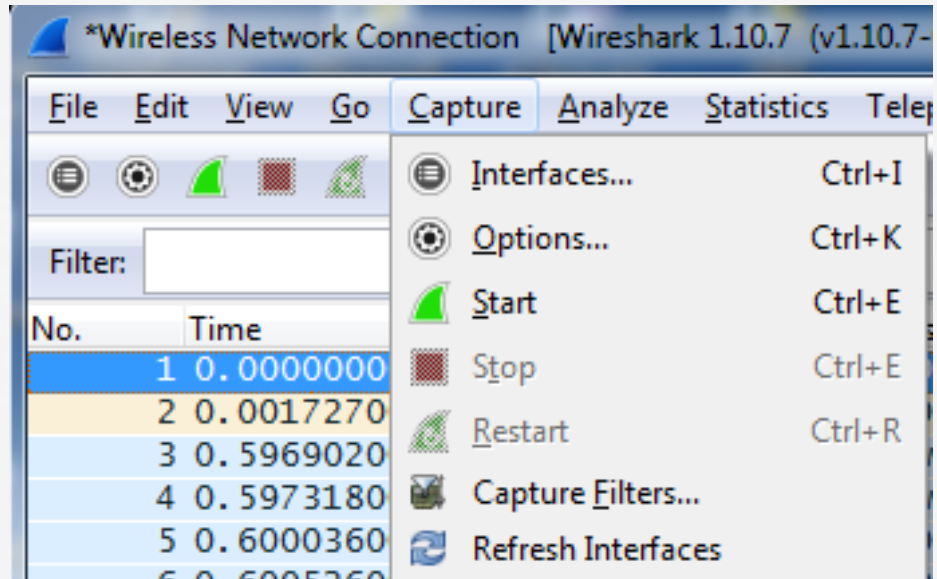
 **Capture Options**  
Start a capture with detailed options

# Capturing Packets

## » Capture packet, review, and save

- Place Wireshark correctly
- Know what and where (placement)
- Start the capture
- Stop the capture
- Save the capture

# Capturing Packets



# Questions?