



# Broadcast Storm

# Broadcast Storm

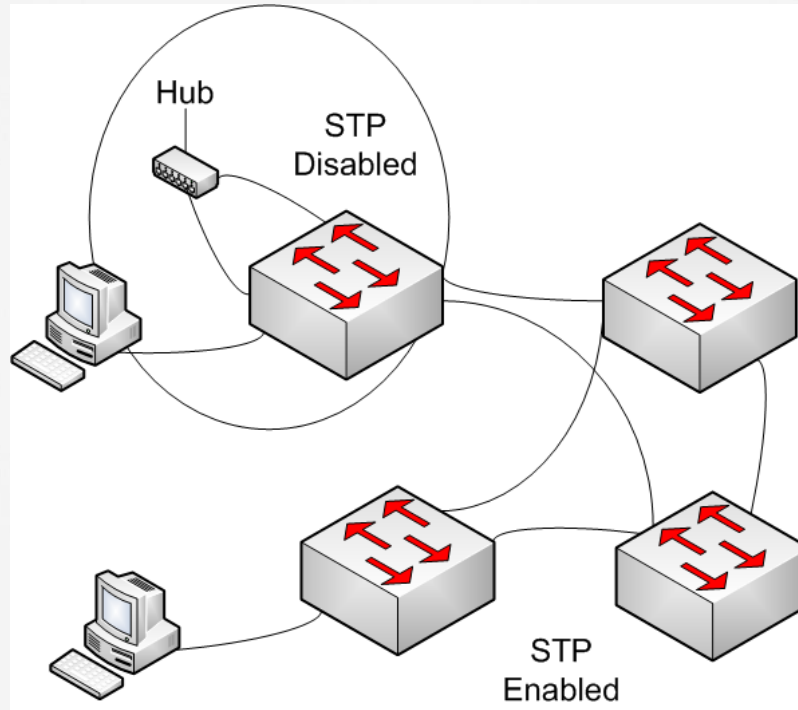
## » What is a Broadcast storm?

- Excessive requests
- Excessive traffic
- Can be caused by loops

## » What is a loop?

- When you have more than one connection and both connections are active
- Use STP or other protocol such as UDLD

# Broadcast Storm



# Broadcast Storm

## » Wireshark allows us to:

- Find the offending MAC address and attempt to map it to the location on the network that it sources from
- Attempt to isolate the segment it sources from
- Determine whether devices are passing the broadcast frames

# Broadcast Storm

The image shows a Wireshark capture of an ARP broadcast storm. The packet list pane displays 14 ARP broadcast packets from source Cisco\_af:f4:54 to various destinations. The packet details pane for the selected frame shows the Ethernet II header with a broadcast destination and the ARP request payload.

No.	Time	Source	Destination	Protocol	Expert	Length	Info
1	0.000000	Cisco_af:f4:54	Broadcast	ARP		60	who has 24.166.173.159? Tell 24.166.172.1
2	0.098594	Cisco_af:f4:54	Broadcast	ARP		60	who has 24.166.172.141? Tell 24.166.172.1
3	0.110617	Cisco_af:f4:54	Broadcast	ARP		60	who has 24.166.173.161? Tell 24.166.172.1
4	0.211791	Cisco_af:f4:54	Broadcast	ARP		60	who has 65.28.78.76? Tell 65.28.78.1
5	0.216744	Cisco_af:f4:54	Broadcast	ARP		60	who has 24.166.173.163? Tell 24.166.172.1
6	0.307909	Cisco_af:f4:54	Broadcast	ARP		60	who has 24.166.175.123? Tell 24.166.172.1
7	0.330433	Cisco_af:f4:54	Broadcast	ARP		60	who has 24.166.173.165? Tell 24.166.172.1
8	0.408556	Cisco_af:f4:54	Broadcast	ARP		60	who has 24.166.175.82? Tell 24.166.172.1
9	0.455104	Cisco_af:f4:54	Broadcast	ARP		60	who has 69.76.220.131? Tell 69.76.216.1
10	0.486666	Cisco_af:f4:54	Broadcast	ARP		60	who has 24.166.173.168? Tell 24.166.172.1
11	0.504694	Cisco_af:f4:54	Broadcast	ARP		60	who has 69.76.221.27? Tell 69.76.216.1
12	0.510684	Cisco_af:f4:54	Broadcast	ARP		60	who has 24.166.174.184? Tell 24.166.172.1
13	0.540733	Cisco_af:f4:54	Broadcast	ARP		60	who has 24.166.173.169? Tell 24.166.172.1
14	0.587308	Cisco_af:f4:54	Broadcast	ARP		60	who has 24.166.174.181? Tell 24.166.172.1

Frame 1: 60 bytes on wire (480 bits), 60 bytes captured (480 bits)  
Ethernet II, Src: Cisco\_af:f4:54 (00:07:0d:af:f4:54), Dst: Broadcast (ff:ff:ff:ff:ff:ff)  
Destination: Broadcast (ff:ff:ff:ff:ff:ff)  
Address: Broadcast (ff:ff:ff:ff:ff:ff)  
.... .1. .... = LG bit: Locally administered address (this is NOT the factory default)  
.... .1. .... = IG bit: Group address (multicast/broadcast)  
Source: Cisco\_af:f4:54 (00:07:0d:af:f4:54)  
Address: Cisco\_af:f4:54 (00:07:0d:af:f4:54)  
.... .0. .... = LG bit: Globally unique address (factory default)  
.... .0. .... = IG bit: Individual address (unicast)  
Type: ARP (0x0806)  
Padding: 06010400000000201000302000005010301  
Address Resolution Protocol (request)

# Questions?