



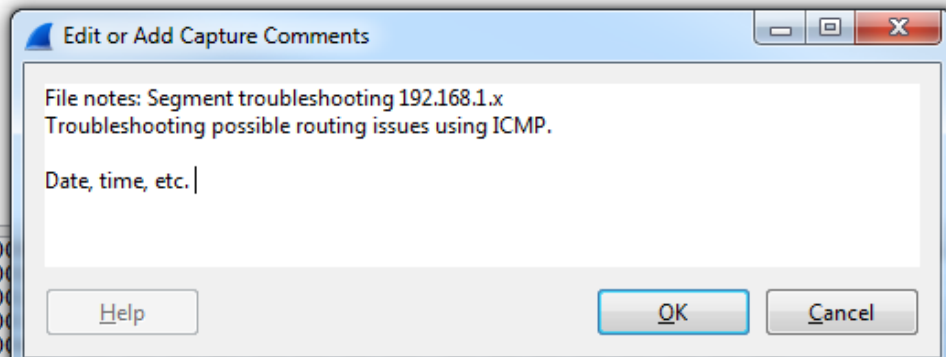
Annotating Files

Annotating Files

- » **Documentation and notes**
- » **Purpose of file annotation**
 - Document use of capture
 - Quick reference to relevant and important information
- » **Two types of annotation**
 - File annotation
 - Packet annotation

Annotating Files

- ⊕ Frame 701: 110 bytes on wire (880 bits), 110 bytes captured (880 bits) on interface 0
- ⊕ Ethernet II, Src: Actionte_44:de:b2 (00:26:b8:44:de:b2), Dst: IntelCor_3b:35:4c (6c:88:14:3b:35:4c)
- ⊕ Internet Protocol Version 4, Src: 130.81.32.146 (130.81.32.146), Dst: 192.168.1.13 (192.168.1.13)
- ⊕ Internet Control Message Protocol



File: "C:\Users\rshimonski\Desktop\Main Da... Profile: Custom

Annotating Files

» How to make and save annotations

- Select file or packet
- Make relevant notes
- Save in correct file format

» Using annotations

- You can reference for the file any time in the Capture window
- For packet annotations, you can use the Expert, the Packets List, or the Details pane

Annotating Files

The screenshot displays the Wireshark network protocol analyzer interface. The main window shows a packet capture of an ICMP echo request (ping) from 130.81.32.144 to 192.168.1.1. The packet list pane highlights packet 71. A context menu is open over this packet, with the 'Packet Comment...' option selected. An 'Edit or Add Packet Comments' dialog box is open, containing the text: 'Make be a possible gateway issue, checked router 192.168.1.1 and route table.' Below the main window, the 'Wireshark: 401 Expert Infos' dialog box is open, showing a summary of statistics: Errors: 1 (1), Warnings: 0 (0), Notes: 3 (57), Chats: 74 (342), Details: 401, and Packet Comments: 1. The 'Packet Comments: 1' section is expanded, showing the comment for packet 71: 'Make be a possible gateway issue, checked router 192.168.1.1 and route table.'

No.	Time	Source	Destination	Protocol	Expert	Length	Ir
5	0.274661000	192.168.1.13	192.168.1.1	ICMP		129	
71	34.283619000	130.81.32.144	192.168.1.1	ICMP		129	
610	66.165698000	130.81.32.146	192.168.1.1	ICMP		129	
701	69.176203000	130.81.32.146	192.168.1.1	ICMP		129	
705	75.178167000	130.81.32.146	192.168.1.1	ICMP		129	
1217	164.947109000	130.81.32.144	192.168.1.1	ICMP		129	
1491	204.068964000	130.81.32.144	192.168.1.1	ICMP		129	
1516	224.713172000	130.81.32.144	192.168.1.1	ICMP		129	

Questions?